



## The Home Depot H02 Split Door Configuration



# The Home Depot H02 Split Door Configuration Installation Guide

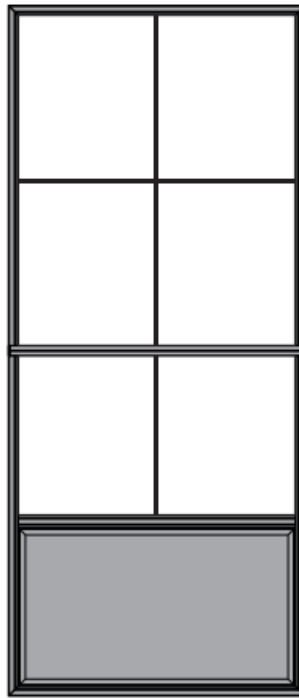
[Home](#) » [THE HOME DEPOT](#) » The Home Depot H02 Split Door Configuration Installation Guide 

### Contents

- [1 The Home Depot H02 Split Door Configuration](#)
- [2 Specifications](#)
- [3 FAQ](#)
- [4 DIMENSIONS](#)
- [5 TOOLS](#)
- [6 PRODUCT OVERVIEW](#)
- [7 Installation](#)
- [8 Usage](#)
- [9 Documents / Resources](#)
  - [9.1 References](#)



## The Home Depot H02 Split Door Configuration



## Specifications

- Dimensions: 1524mm x 28mm
- Max Load Capacity: 40 KG

## FAQ

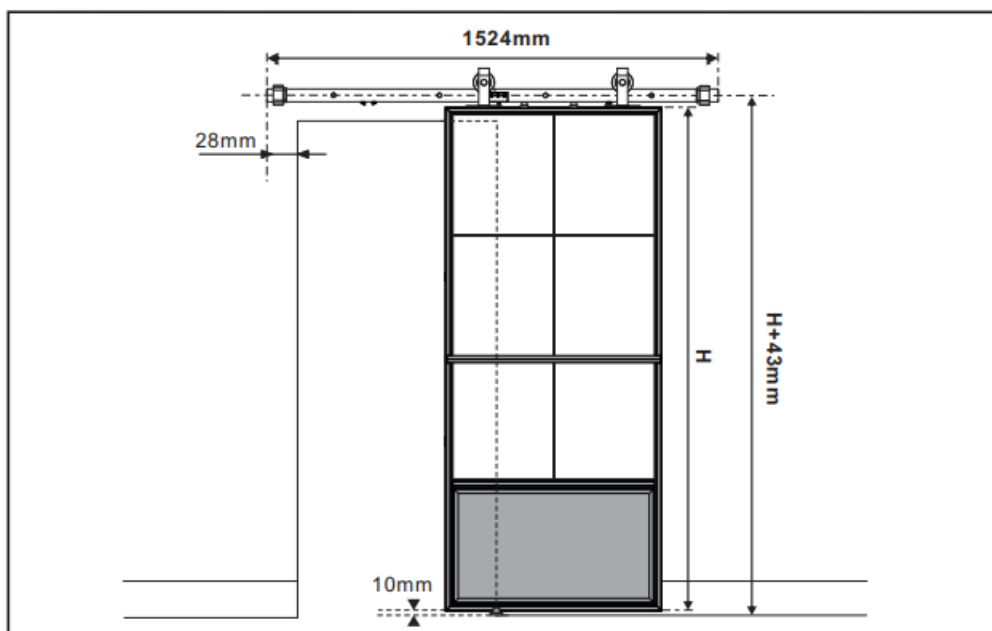
**Q: What is the maximum weight capacity of the product?**

A: The product can hold a maximum load of 40 KG.

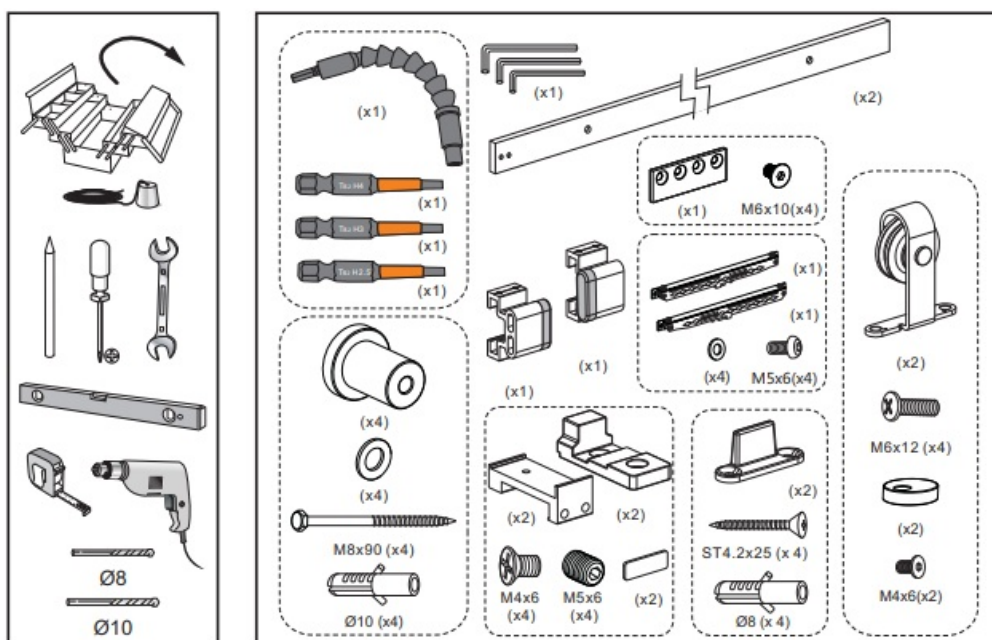
**Q: How should I move the door when using the product?**

A: Follow the instructions provided in the manual for moving the door along the rail smoothly.

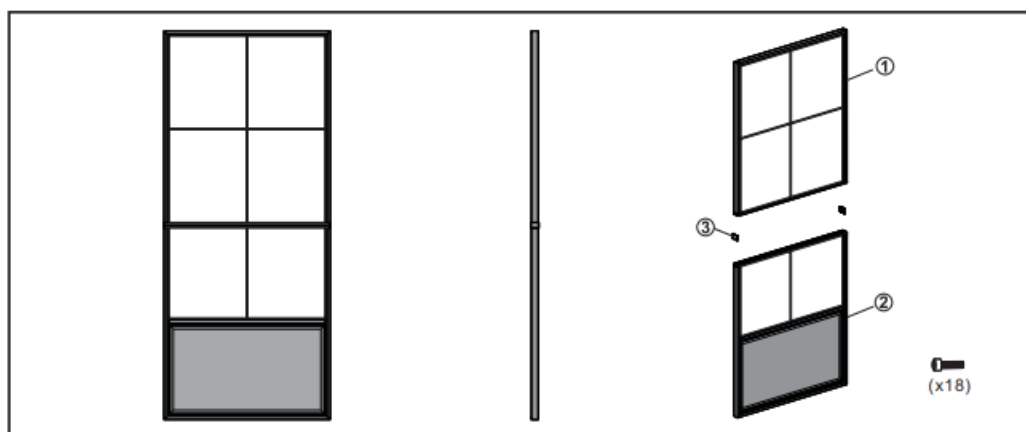
## DIMENSIONS



## TOOLS



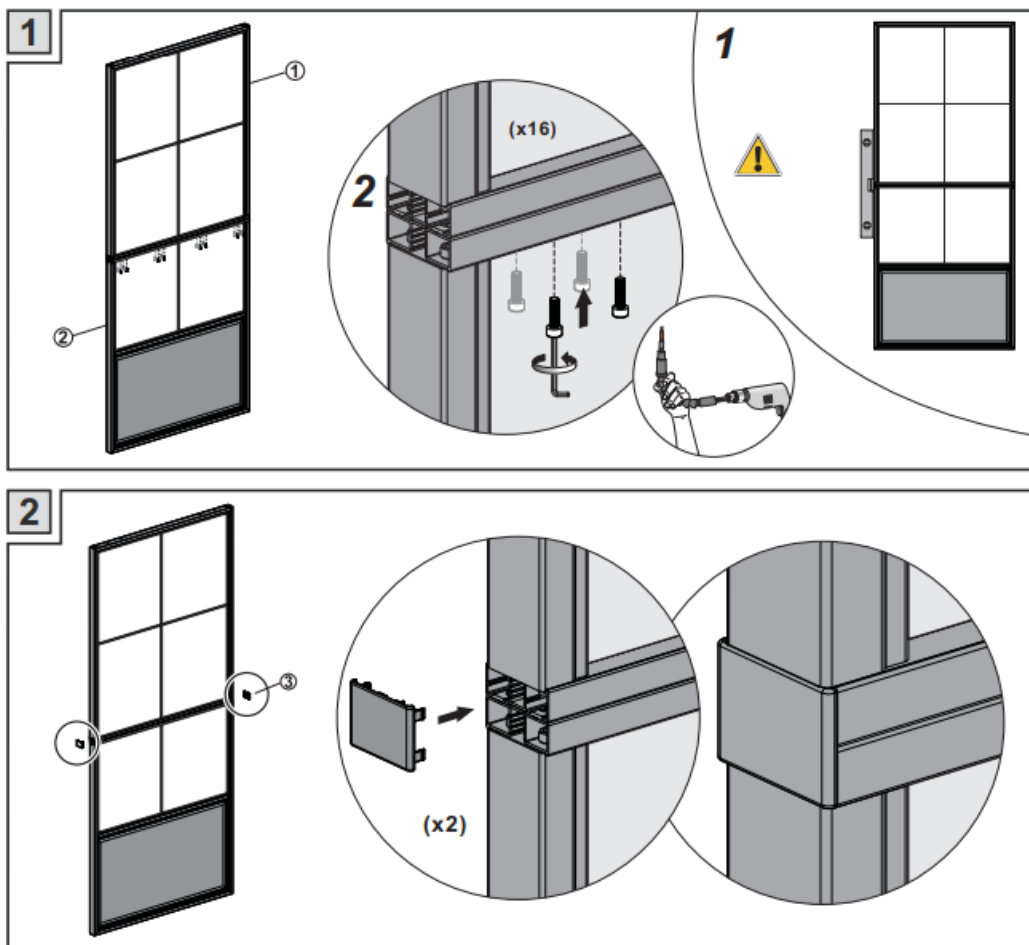
## PRODUCT OVERVIEW

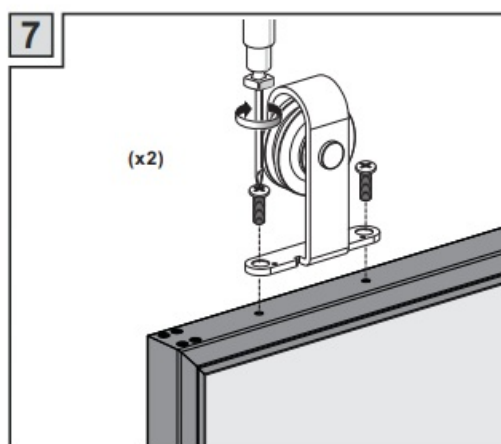
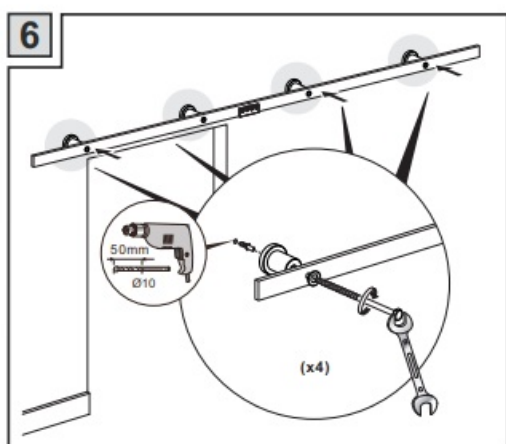
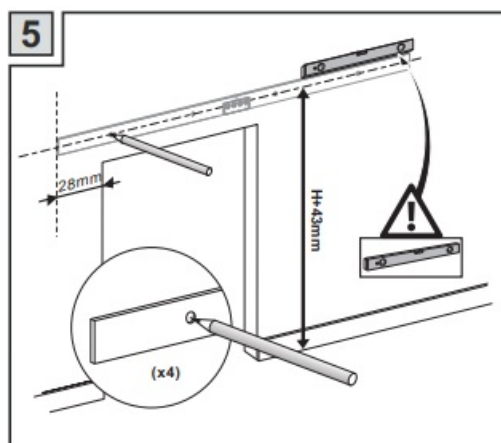
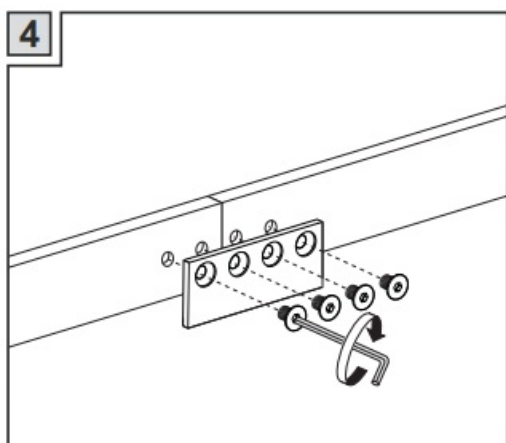
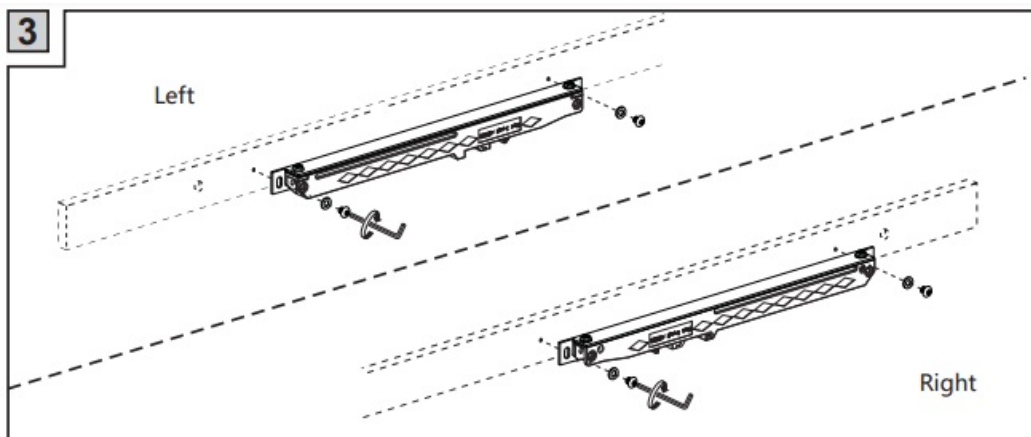


## Installation

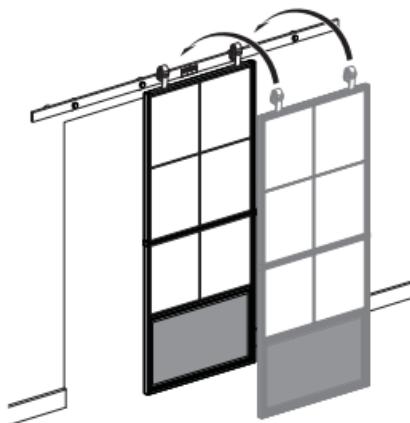
Follow the steps below to install the product:

1. Refer to the installation manual for detailed instructions.
2. Ensure all components are included in the package.
3. Assemble the parts according to the provided diagram.
4. Secure the product in place as per the installation guidelines.

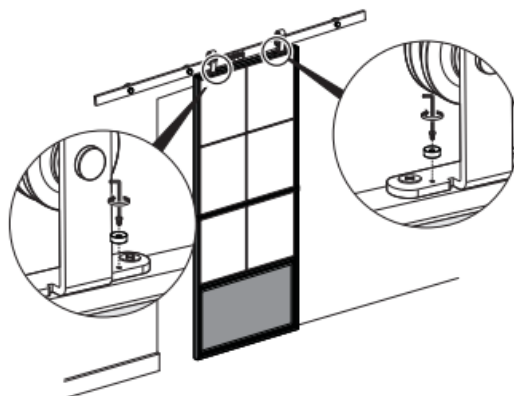




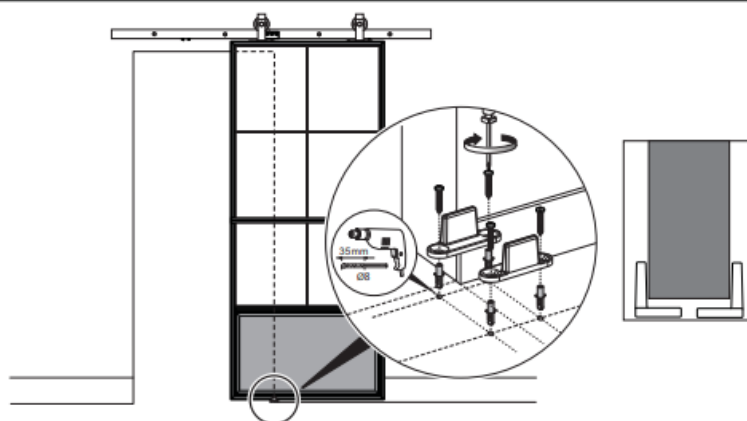
8



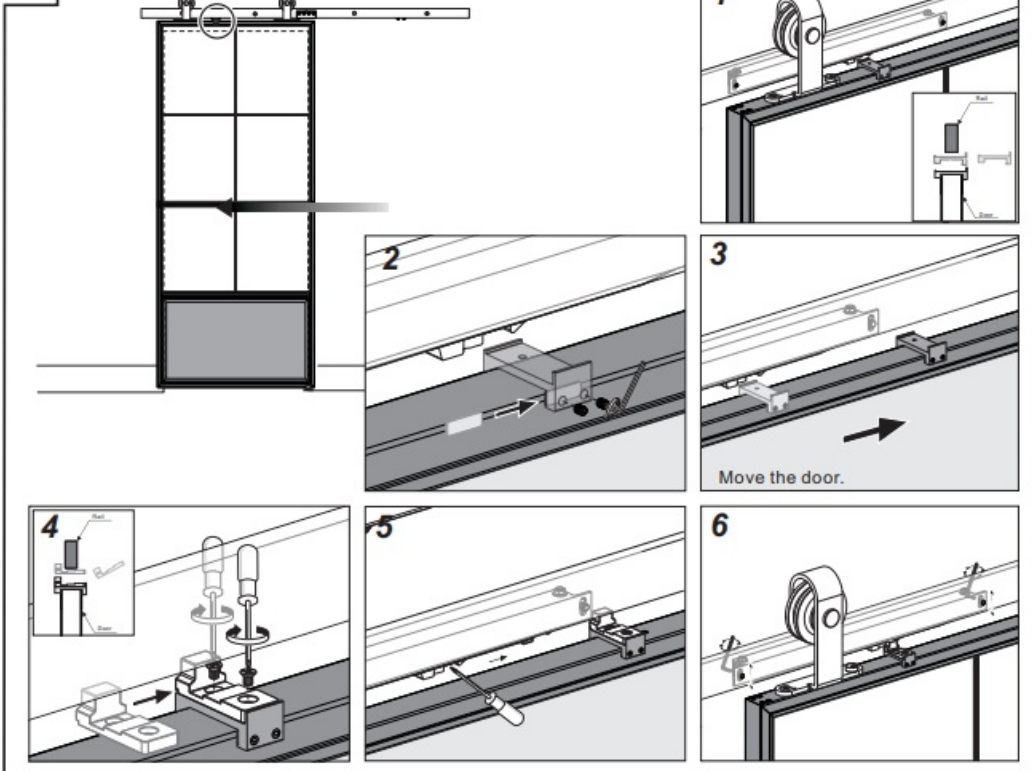
9



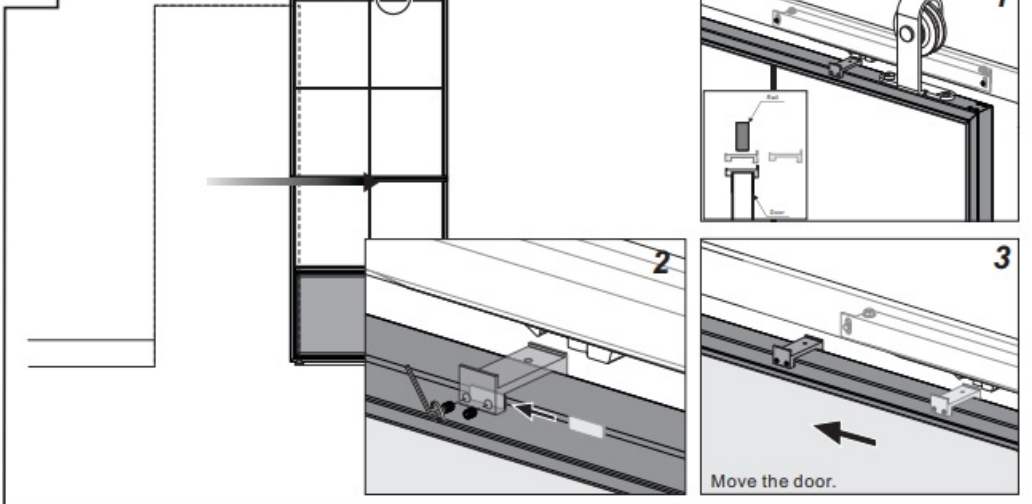
10

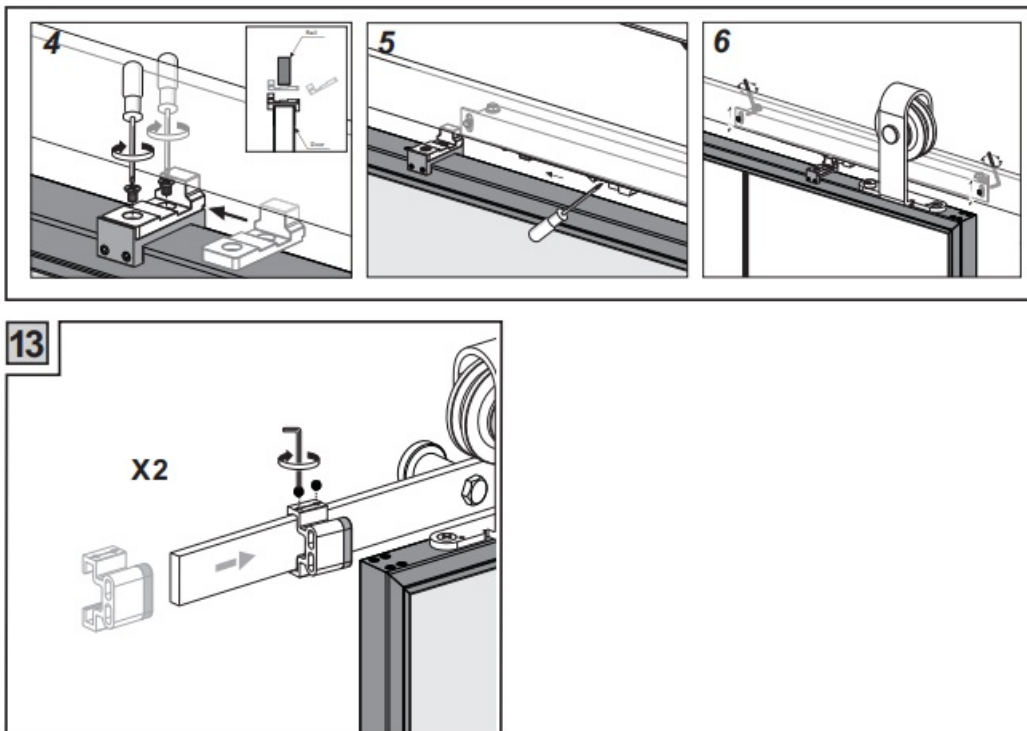


11



12



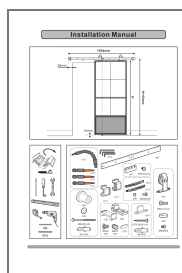


## Usage

To use the product effectively, follow these steps:

1. Ensure the product is installed correctly.
2. Check the weight limits to avoid overloading.
3. Operate the door smoothly within the specified dimensions.

## Documents / Resources



[The Home Depot H02 Split Door Configuration](#) [pdf] Installation Guide  
H02 Split Door Configuration, H02, Split Door Configuration, Door Configuration, Configuration

## References

- [User Manual](#)

[Manuals+](#), [Privacy Policy](#)

This website is an independent publication and is neither affiliated with nor endorsed by any of the trademark owners. The "Bluetooth®" word mark and logos are registered trademarks owned by Bluetooth SIG, Inc. The "Wi-Fi®" word mark and logos are registered trademarks owned by the Wi-Fi Alliance. Any use of these marks on this website does not imply any affiliation with or endorsement.