



The HANDY THS125 Push Broadcast Spreader Machine Instruction Manual

[Home](#) » [The Handy](#) » The HANDY THS125 Push Broadcast Spreader Machine Instruction Manual 

Contents

[1 The HANDY THS125 Push Broadcast Spreader Machine Instruction Manual](#)

[2 SPECIFICATIONS](#)

[3 The manufacturer reserves the right to change the product specification and livery according to continued product improvements.](#)

[4 If you require any assistance with regards to the contents or operation of your machine, please contact us: Tel: 01793 333212, option 2](#)

[5 Opening Hours Weekdays: \(CLOSED WEEKENDS & BANK HOLIDAYS\)](#)

[6 INTENDED USAGE](#)

[7 WARNING](#)

[8 IF NOT USED PROPERLY THIS MACHINE CAN BE DANGEROUS!](#)

[9 TRAINING](#)

[10 GENERAL SAFETY INSTRUCTIONS](#)

[10.1 It is important that you read and understand the owner's manual and labels affixed to the machine. Learn its application and limitations as well as the specific potential hazards. Retain these instructions for future reference. The operator is responsible for following the warnings & instructions in this manual and on the product.](#)

[11 GENERAL SAFETY STAY ALERT](#)

[12 SMALL COMPONENTS](#)

[13 USERS, BYSTANDERS AND CHILDREN](#)

[14 AVOID DANGEROUS CONDITIONS](#)

[15 INSPECT YOUR MACHINE](#)

[16 DRESS PROPERLY](#)

[17 DO NOT OVERREACH](#)

[18 DO NOT FORCE TOOL](#)

[19 INSPECT](#)

[20 MAINTAIN YOUR MACHINE WITH CARE](#)

[21 PROTECT THE ENVIRONMENT](#)

[22 STORE IDLE EQUIPMENT](#)

[23 TYRE INFLATION](#)

[24 KNOW YOUR MACHINE](#)

[25 ASSEMBLY](#)

26 RECOMMENDED TOOLS REQUIRED

27 STEP 1 – Wheels

28 NOTE: Four additional flat washers are provided for adjusting the gap between the wheels

29 NOTE: Before tightening the bolt make sure the support leg flange and the lower cross bar holes line up.

30 STEP 3 – Hopper

31 STEP 4 – Connecting Handle

32 STEP 5 – Solid Linkage

33 ADJUSTMENTS STEP 6

34 Before filling the hopper, familiarise yourself with the operation of this Spreader.

35 RATE SETTINGS

36 CONSISTENT COVERAGE

37 N.B. ALWAYS MOVE OFF BEFORE OPENING FEED-GATE.ALWAYS CLOSE FEED-GATE BEFORE STOPPING.

38 SPREADER SETTING INSTRUCTIONS

39 FOR MATERIALS THAT USE A TYPICAL 5,000 Sq. Ft, 10,000 Sq. Ft. & 15,000 Sq. Ft. COVERAGE VALUE
See additional spreader setting instructions on the following pages if your material coverage value is not typical.

40 As an example:

41 CHART B – SPREADER SETTINGS/SPREAD WIDTHS*

42 FOR MATERIALS THAT DO NOT USE A TYPICAL 5,000 Sq. Ft, 10,000 Sq. Ft. & 15,000 Sq. Ft.
COVERAGE VALUE

43 To obtain the proper spreader setting for the material being spread, follow these steps:

44 As an example:

45 MAINTENANCE

46 LUBRICATE

47 GEARBOX

48 CHECK TYRE INFLATION

49 CLEANING

50 STORING

51 CHECK ALL NUTS, BOLTS AND FASTENING

52 NEVER EXCEED LOAD CAPACITY

53 PARTS DIAGRAM – THS125 (1938137001)

54 PARTS LIST – THS125 (1938137001)

55 GJ HANDY & CO LTD USER WARRANTY POLICY

56 Users Statement of Warranty

56.1 Webb Dynamic, Heritage & Legacy, Handy (All non-Petrol & Electric), Mowerland, Q-Garden

56.2 Not covered by this warranty

56.3 Disclaimer

56.4 General

56.5 VERSION 8 01-2020

56.6 NOTES

56.7 Tel: 01793 333212 Email: customerservice@handydistribution.co.uk

56.8 Read More About This Manual & Download PDF:

57 Documents / Resources

57.1 References

The HANDY THS125 Push Broadcast Spreader Machine Instruction Manual



SPECIFICATIONS

The manufacturer reserves the right to change the product specification and livery according to continued product improvements.

Model	THS125
Product Number	1938137001
Capacity (Weight)	57kg (125lb)
Hopper Dimensions (cm)	74.9 x 41.9 x 34
Overall Dimensions (cm)	109.9 x 80 x 85
Product Weight (kgs)	17.6
Tyre Rating	2 Ply
Tyre Maximum PSI	25psi (Do not exceed)

Consistent with our policy of continuous improvement, The Handy reserves the right to change the design and configuration of any of its products without notice or obligation. Therefore, please treat the text and images in this manual for illustrative purposes only. They may in no case serve as a basis for any legal claim.

If you require any assistance with regards to the contents or operation of your machine, please contact us: Tel: 01793 333212, option 2

Email: customerservice@handydistribution.co.uk

Opening Hours Weekdays: (CLOSED WEEKENDS & BANK HOLIDAYS)

February to October 8:00am – 5:00pm – November to January 8:30am – 5:00pm

IMPORTANT INFORMATION

INTENDED USAGE



WARNING

Persons should never ride on the spreader.

Read this instruction manual carefully before operating this machine. Make sure that you are familiar with the controls and properly operate the machine. Following these instructions can reduce the risk of personal injury

The spreader is designed for use in private gardens and primarily for spreading granular material in and around domestic gardens. Ideal for fertiliser, granules, grass seed etc. This product can be used with refined ice melting salt, but please clean the spreader thoroughly after use with refined de-icing salt. Please note that this product cannot be used with Rock Salt.

Extended use over abrasive surfaces (e.g. concrete, tarmac, paving etc.) could cause premature wear on the spreader tyres. Commercial or industrial environments are not recommended.

Generally acknowledged accident prevention regulations and enclosed safety instructions must be observed. Only perform work described in these instructions for use, any other use is incorrect. The manufacturer will not assume responsibility for damage resulting from such use.

IF NOT USED PROPERLY THIS MACHINE CAN BE DANGEROUS!

This machine can cause serious injury to the operator and others, the warning and safety instructions must be followed to ensure reasonable safety and efficiency in using this product. The operator is responsible for following the warning and safety instructions in this manual and on the machine. Never use the product unless the components are correctly positioned and operational.









TRAINING

Read the instructions carefully: Be familiar with the controls and the proper use of the equipment. Never allow children or people unfamiliar with these instructions to use the product.

Local regulations can restrict the age of the operator. Keep in mind that the operator or user is responsible for accidents or hazards involving the machine that occur to other people or their property.

GENERAL SAFETY INSTRUCTIONS

It is important that you read and understand the owner's manual and labels affixed to the machine. Learn its application and limitations as well as the specific potential hazards. Retain these instructions for future reference. The operator is responsible for following the warnings & instructions in this manual and on the product.

	Read & understand the operator's manual for the spreader. Failure to follow instructions could result in death or serious injury.		Risk of Slicing. Keep hands out of the way of all moving parts.
	Wear gloves to protect your hands. Wear recognised eye protection at all times.		Check your machine before using. Keep guards in place and in working order. Frequently check to see that foreign objects are removed before using. Replace damaged, missing or failed parts before using it.
SLOPES	Be careful when using on slopes. Do not operate on inclines greater than 15°. It is advised to work across the incline, not up and down.		Safety alert symbol. Used to alert you to potential personal injury hazards. Obey all safety messages that follow this symbol to avoid possible injury.
 DANGER	Indicates an imminently hazardous situation which, if not avoided, will result in serious injury.	 WARNING	Indicates a potentially hazardous situation which, if not avoided, could result in serious injury.
 CAUTION	Indicates a potentially hazardous situation which, if not avoided, may result in minor or moderate injury.	CAUTION	Used without the safety alert symbol indicates a potentially hazardous situation which, if not avoided, may result in property damage.

GENERAL SAFETY STAY ALERT

Do not operate the machine while under the influence of drugs, alcohol, or any medication that could affect your ability to use it properly. Do not use this machine when you are tired or distracted from the job at hand. Be aware of what you are doing at all times. Use common sense.

SMALL COMPONENTS

Contains small components that could be a choking hazard if swallowed. Keep these items away from children.

USERS, BYSTANDERS AND CHILDREN

Do not at any time carry passengers in or on the spreader, stationary or whilst moving. Do not allow any person, child or pet to play on, stand, sit, lay or climb in or on the spreader. Never allow children or people unfamiliar with these instructions to use the spreader. Local regulations can restrict the age of the operator. Keep unauthorised persons a safe distance away from the machine. If approached, stop the machine immediately.

AVOID DANGEROUS CONDITIONS

Work in daylight or in good artificial light; walk, never run with the machine; always be sure of your footing on slopes; exercise extreme caution when changing direction on slopes; do not work on excessively steep slopes; use extreme caution when reversing or pulling the machine towards you; do not put hands or feet near or under rotating or moving parts. When operating on slopes, across the incline.

INSPECT YOUR MACHINE

Check all bolts, nuts, and screws for tightness before each use, especially those securing guards and drive mechanisms. Vibration during use, may cause these to loosen.

Form a habit of checking to see that all other tools/equipment are removed from the working area before operating. Replace damaged, missing or failed parts before using. Warning labels carry important information. Replace any missing or damaged warning labels.

DRESS PROPERLY

Be careful of loose clothing and other accessories (watches, necklaces etc.) which can be caught in moving parts. Long trousers are advisable. Always wear substantial non-slip footwear when operating. Never operate barefoot or when wearing sandals. Wear a face or dust mask if the operation is dusty. Wear protective hair covering to contain long hair, preventing it from getting caught in machinery.

DO NOT OVERREACH

Always keep proper footing and balance when operating. Use on slopes with great care. Never stand on the machine. Serious injury could occur if the machine is tipped or if the moving parts are unintentionally contacted. Do not store anything above or near the machine, where anyone might stand on the machine to reach them.

DO NOT FORCE TOOL

Do not exceed maximum load capacity of 57kg (125lb). Avoid large holes and ditches when transporting loads. Always work within the rated capacity. Do not use for a purpose for which it was not intended. Be careful when operating on steep slopes, the spreader may tip over. Always operate at reduce speed in rough terrain, along creeks, ditches and on hillsides. To avoid personal injury and/or equipment damage **DO NOT EXCEED 10 MPH**. Always use caution when loading and unloading the hopper.

INSPECT

Before using, always visually inspect to see that the machine is not worn or damaged. Replace worn or damaged elements and bolts in sets, to preserve balance.

MAINTAIN YOUR MACHINE WITH CARE

Clean the machine immediately after use. Keep the machine clean to ensure it operates to its full and safest performance. When maintaining this machine, only the manufacturer's original replacement parts should be used. The use of non-original manufacturer parts may invalidate your warranty.

PROTECT THE ENVIRONMENT

Take left over materials to an authorised collection point or follow the stipulations in the country where the machine is used. Do not discharge into drains, soil or water.

STORE IDLE EQUIPMENT

When not in use, store in a dry location. Keep the machine away from children and others not qualified to use it. Keep away from direct sunlight.

TYRE INFLATION

Before operating, make sure the tyres have the recommended pressure of 25 PSI (**Do not exceed 25 PSI**). We recommend the use of **FOOT or HAND** inflation devices only. This is a garden/domestic spreader, therefore extended use over abrasive surfaces (e.g. concrete, tarmac etc.) could cause premature wear on the tyres.

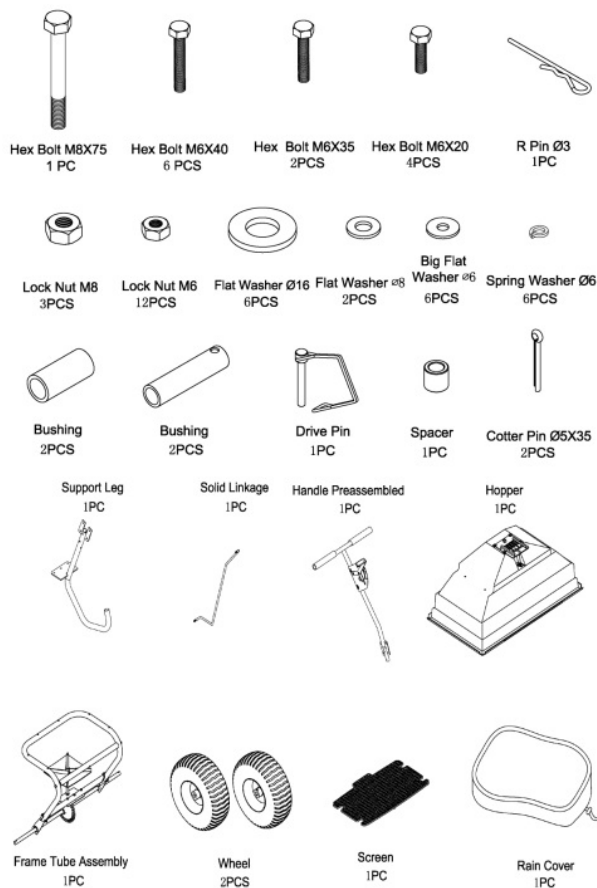
KNOW YOUR MACHINE

Read this owner's manual before operating the equipment. Familiarize yourself with the location and function of the controls and features. Save this manual for future reference.



1. **T-Handle** – Pushes and moves the spreader
2. **Flow Control** – Controls the flow of material being spread
3. **Hopper** – Do not exceed rated load capacity 125lb (56.8kgs).
4. **Tyre/Wheel** – Do not exceed recommended inflation rated 25
5. **Impeller** – Evenly distributes
6. **Support Leg** – Stabilizes load and spreader, when

COMPONENTS



NOTE: Parts Lists are supplied for information purposes only, not all parts are stocked individually & we recommend you contact our Spares Team on 01793 333212 for expert advice.

ASSEMBLY

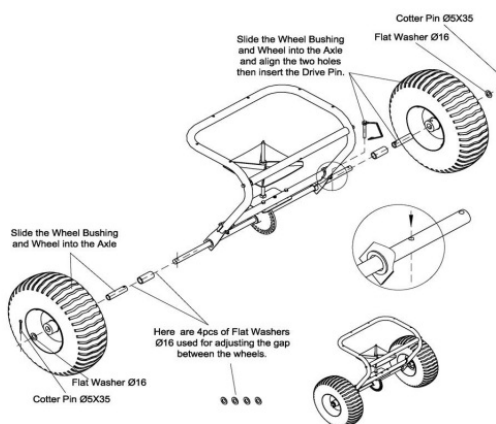
RECOMMENDED TOOLS REQUIRED

- Pliers
- Adjustable Spanner
- 8mm Wrench
- 10mm Wrench
- 13mm Wrench
- 14mm Wrench

STEP 1 – Wheels

- On the left side of the axle install a wheel bushing and wheel spacer onto the
- Slide a wheel over the
- Put a Ø16 flat washer over the axle, insert the cotter pin through the hole and secure by
- On the right side of the axle slide a wheel bushing and the wheel spacer onto the
- Put a wheel over the axle, line up the holes and insert the drive pin through sleeve and
- Put a Ø16 flat washer over the axle, insert the cotter pin through the hole and secure

NOTE: Four additional flat washers are provided for adjusting the gap between the wheels

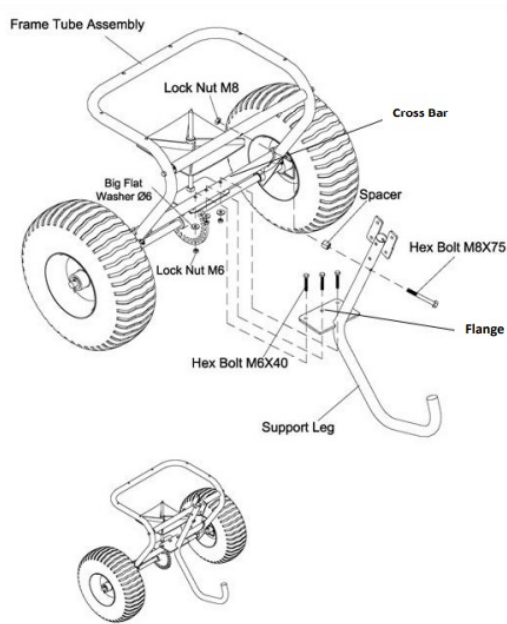


STEP 2 – Support Leg

- Position the support leg so the J-shaped end is pointing away from the wheel
- Insert the M8x75 hex bolt through the top hole on the support leg and slide the spacer over the bolt
- Take the support leg and insert the bolt through the upper cross bar on the mounting assembly and loosely tighten with the M8 lock nut.

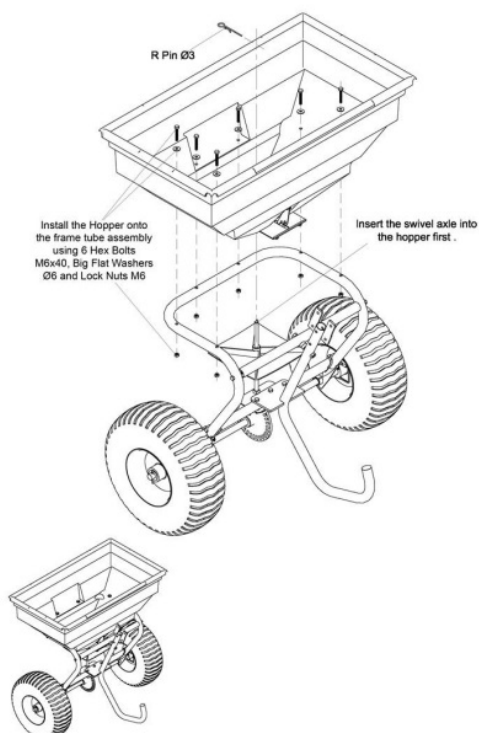
NOTE: Before tightening the bolt make sure the support leg flange and the lower cross bar holes line up.

- Insert M6 x 40 hex bolt through the holes in the flange and cross bar. Use the Ø6 big flat washer and M6 lock nut.



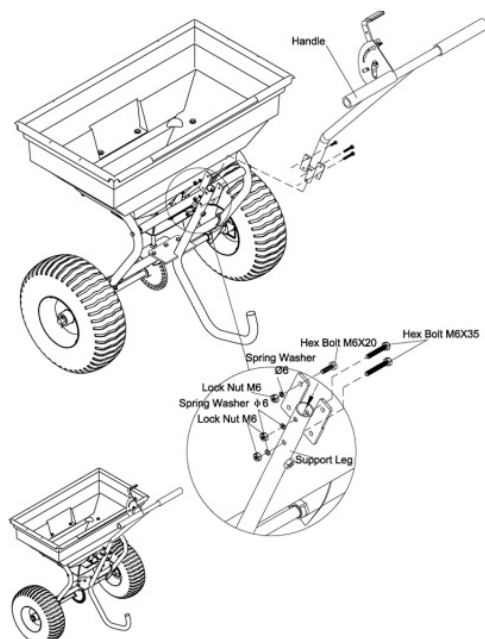
STEP 3 – Hopper

- Lower the hopper over the mounting assembly, carefully line up the holes in the bottom of the hopper with the spindle in the mounting plate of the
- Use the M6 x 40 hex bolt and Ø6 flat washer to attach the hopper to the mounting assembly and secure with M6 lock nut.
- Make sure the gear and pinion gear works smoothly. If not, adjust again until the gear and pinion gear swivel
- Tighten all the hardware on the shaft support plate and
- Insert the R Pin through the top of the



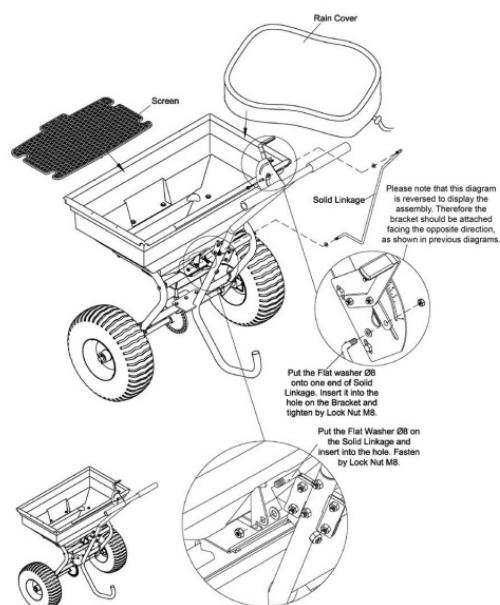
STEP 4 – Connecting Handle

- Slide the handle tube into the top of the support leg and align the two fixing
- Insert M6x35 hex bolts through the two holes on the support leg and tighten with the Ø6 spring washer and M6 lock nut.
- Insert M6x20 hex bolt through the hole in the side plate and tighten with Ø6 spring washer and M6 lock



STEP 5 – Solid Linkage

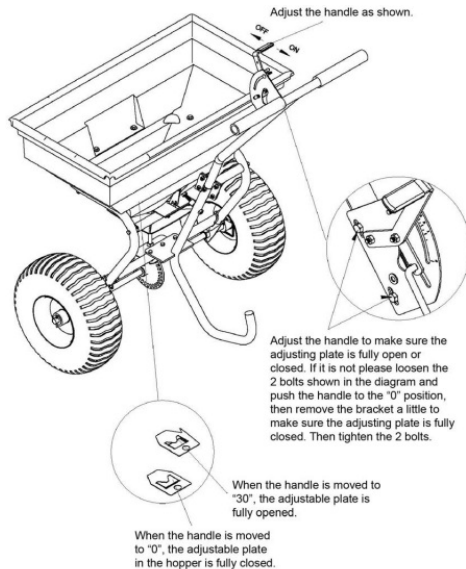
- Connect the solid linkage through the bottom fix plate using the Ø8 flat washer and tighten with an M8 lock nut.
- Connect the other end of the linkage to the flow control with an Ø8 flat washer and M8 lock
- Install the hopper screen in the bottom of the
- Before using the spreader make sure all the hardware is
- Use the rain cover as needed to protect material in the hopper or when spreader is being



ADJUSTMENTS STEP 6

When you have finished all the above steps, if the hole at the bottom of hopper cannot be closed and opened completely by using the handle you may need to follow these additional steps.

- The handle adjusts the spreader setting. When the handle is moved to “30”, the adjustable plate is fully open, when at “0”, it is fully
- Loosen the wing nut on the Bracket and move the adjustment lever handle up or down depending on the amount of material required. Pushing the handle down will release more material and pulling the handle up will stop the flow
- Tighten the wing nut when the desired position is reached.



To operate this spreader, push the handle to the lowest position (downwards). You may move the position of the Wing nut on the Gauge & Lever to adjust the space on the hole between the hopper and the adjustable plate as per your need when spreading.

Before filling the hopper, familiarise yourself with the operation of this Spreader.

- The Spreader is designed to be pushed at 3 miles per hour – brisk walking pace. The rate of walking will affect the spread pattern and flow
- Move the Wing Nut attached to the stop bolt on the gauge to the relevant
- Start pushing the Spreader forward & pull the control lever back to the stop bolt, opening the feed-gate hole at the bottom of the
- If the Spreader does not spread evenly, ensure that the FRONT of the gearbox points towards the front of the The impellor must rotate clockwise.
- Material which is stuck on the impellor blades will cause uneven
- To stop spreading, push the gauge lever forward to close the feed-gate hole in the
- Remove the agitator when using refined de-icing salt to reduce gearbox damage. Salt may corrode the machine and reduce its working **DO NOT USE ROCK SALT.**
- If fertiliser is accidentally deposited too heavily in a small area, soak the area thoroughly with a garden hose or sprinkler to prevent burning the
- When broadcasting weed control fertilizers, make sure the broadcast pattern does not hit evergreen trees, flowers or shrubs.
- Always use the rain cover in wet weather conditions to keep the hopper contents dry.

RATE SETTINGS

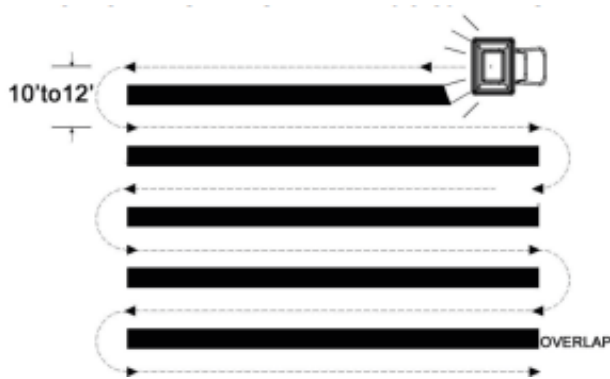
Our spreaders are designed to spread dry, powdered or granulated materials thinly and evenly over reasonably smooth surfaces. Due to the many hundreds of different materials which can be used with this spreader, it is impossible to list them all and the relevant spreader setting for the material. We therefore recommend that you test the spread pattern on a hard surface (driveway etc), before passing over the area to be treated.

1. Inspect your spreader before each use. Make sure the wheels turn easily, and the impeller still moves when the spreader is The hopper should be clean and free from cracks.
2. Determine approximate square footage of the area to be covered and estimate amount of material Please refer to the spreader setting instructions later in the manual.
3. Spreader is useful for spreading a range of materials (Ice Melt, Fertilizer, Grass Seed). Materials such as Powder, Manure, Top Soil, Gravel, and Mulch have the wrong physical characteristics and should not be used with these
4. Before filling the hopper, make sure that the flow control lever and the flow control plate are
5. Make sure the R pin is installed through the gearbox spindle in the hopper before starting the
6. Break up any lumpy material as you fill the
7. Once you have determined your proper spreader setting and are using the spreader, keep the following thoughts in mind to optimize spreading results: Always set the adjustable stop with the flow control to the "0" position and continue moving one more stride whenever you are about to stop or turn the spreader. This action will close the flow control plate and stop the dispersing of material, which will result in reduced waste and avoid damaging the lawn with oversaturated material.
8. To maintain the same coverage when walking at a different speed, adjust the flow rate. Reduce the flow setting for slower speeds and increase the flow setting for higher
9. Keep the impeller plate horizontal when Tilting the spreader will result in uneven coverage.
10. Always start walking prior to opening the flow control closure
11. If spreading material is accidentally deposited too heavily in a small area, soak the area thoroughly with a garden hose or sprinkler to prevent burning of the
12. To ensure consistent coverage, make sure each scatter pattern slightly overlaps as shown in figure below. The approximate scatter widths for different materials are shown in the application chart.
13. When scattering spreading material, make sure material does not hit evergreen trees, flowers or
14. Make sure you are appropriately dressed, including sturdy footwear. Protect yourself by wearing gloves and a dust mask when handling chemical lawn products that contain pesticides and
15. Do not over apply spreading material. Follow the recommended coverage rate for each product. Over application will lead to lawn damage and contamination.

CONSISTENT COVERAGE

To ensure consistent coverage, ensure each broadcast pattern slightly overlaps the previous, as shown below.

N.B. ALWAYS MOVE OFF BEFORE OPENING FEED-GATE.ALWAYS CLOSE FEED-GATE BEFORE STOPPING.



SPREADER SETTING INSTRUCTIONS

FOR MATERIALS THAT USE A TYPICAL 5,000 Sq. Ft, 10,000 Sq. Ft. & 15,000 Sq. Ft. COVERAGE VALUE

See additional spreader setting instructions on the following pages if your material coverage value is not typical.

To obtain the proper spreader setting for the material being spread, follow these steps:

1. Find the total weight in lbs. Of the product from the product label on the bag of material. Reference the nearest corresponding row in Chart A.
2. Find the coverage amount in square feet that the product is rated for from the product label on the bag of material. Reference the corresponding column in Chart A.
3. Find the nearest intersecting point of these two numbers from Chart A. (this number equals the lbs. per 1000 ft.)
4. Use this number to find the nearest number in the column "lbs. / 1000 ft." on Chart B to obtain the spreader setting.
5. You may have to approximate your spreader setting based upon the lbs. per 1000 sq. ft. number that you arrived

As an example:

1. *The fertilizer bag weighs 42*
2. *The coverage value is rated at 15,000 square*
3. *Use Chart A to find the corresponding column of coverage and nearest row of weight. The nearest intersecting point is approximately 8 since the bag weight is between 40 lbs. and 45 lbs.*
4. *Using Chart B, the number 8 is between 2 lbs. per 1000 sq. ft. and 3 lbs. per 1000 sq. ft.*
5. *Spreader setting would be*

CHART A – SQUARE FOOT COVERAGE PER BAG*

(*) These are only estimates. Actual amounts may vary.

Weight Of Bag (LBS.)	LBS/1,000 SQ FT		
5,000 SQ FT	10,000 SQ FT	15,000 SQ FT	
5	1.0	0.5	0.3
10	2.0	1.0	0.7
15	3.0	1.5	1.0
20	4.0	2.0	1.3
25	5.0	2.5	1.7
30	6.0	3.0	2.0
35	7.0	3.5	2.3
40	8.0	4.0	2.7
45	9.0	4.5	3.0
50	10.0	5.0	3.3

CHART B – SPREADER SETTINGS/SPREAD WIDTHS*

(*) These are only estimates actual spreader setting and widths may vary depending on material.

LBS/1,000 SQ FT	SPREADER SETTING	SMALL PARTICLE SPREAD	MEDIUM PARTICLE SPREAD	LARGE PARTICLE SPREAD
1	10	5-6 ft.	6-9 ft.	9-12 ft.
2	12	5-6 ft.	6-9 ft.	9-12 ft.
3	14	5-6 ft.	6-9 ft.	9-12 ft.
4	15	5-6 ft.	6-9 ft.	9-12 ft.
5	17	5-6 ft.	6-9 ft.	9-12 ft.
6	18	5-6 ft.	6-9 ft.	9-12 ft.
7	20	5-6 ft.	6-9 ft.	9-12 ft.
8	21	5-6 ft.	6-9 ft.	9-12 ft.
9	23	5-6 ft.	6-9 ft.	9-12 ft.
10	25	5-6 ft.	6-9 ft.	9-12 ft.

ADDITIONAL INSTRUCTIONS

FOR MATERIALS THAT DO NOT USE A TYPICAL 5,000 Sq. Ft, 10,000 Sq. Ft. & 15,000 Sq. Ft. COVERAGE VALUE

To obtain the proper spreader setting for the material being spread, follow these steps:

1. Find the total weight in lbs. of the product from the product label on the bag of
2. Find the coverage amount in square feet that the product is rated for from the product label on the bag of
3. Divide the bag weight rated in by the square feet coverage rated on the bag.
4. Take this result and multiply it by
5. This final number is the of material to be spread per 1000 square feet.
6. Use this number in Chart B to obtain the proper spreader

As an example:

1. *The fertilizer bag weighs 10*
2. *The coverage value is rated at 2000 square feet. $10 \text{ lbs.} / 2000 \text{ square ft.} = 0.005$*

3. $0.005 \times 1000 = 5 \text{ lbs. per } 1000 \text{ sq. ft.}$

Using this number in Chart B, you would obtain a spreader setting of 17.

MAINTENANCE

LUBRICATE

Maintenance spray or multi-purpose grease can be applied to the wheel axle prior to long-term storage. Oiling is not necessary.

GEARBOX

DO NOT open the gearbox. The gears are permanently lubricated from the factory and do not need lubricating.

CHECK TYRE INFLATION

Prior to using the spreader, ensure the tyres are sufficiently inflated. We recommend the use of FOOT or HAND inflation devices only. **Do not inflate above 25psi.**

CLEANING

After each use thoroughly wash the spreader and clean material out of the hopper.

STORING

Never allow material to stay in the hopper for extended periods of time. Before storing, ensure that the spreader is clean and dry.

Store indoors or in a protected area during severe weather and in the winter months.

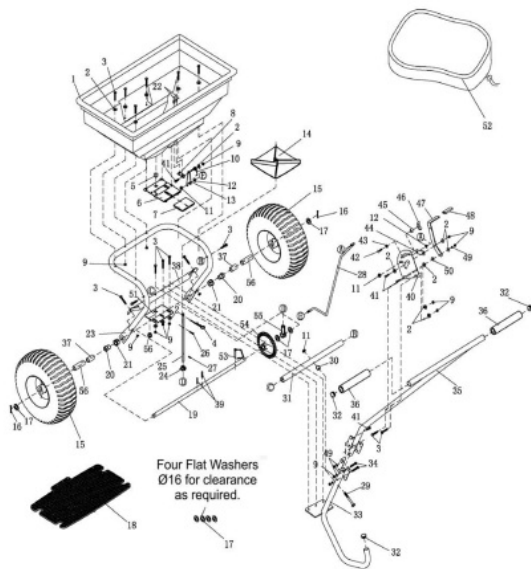
CHECK ALL NUTS, BOLTS AND FASTENING

Periodically check all fastenings are tight & secure.

NEVER EXCEED LOAD CAPACITY

To avoid damaging the spreader, never exceed the rated load capacity of 57kg (125lb).

PARTS DIAGRAM – THS125 (1938137001)



NOTE: Parts Lists are supplied for information purposes only, not all parts are stocked individually & we recommend you contact our Spares Team on 01793 333212 for expert advice.

PARTS LIST – THS125 (1938137001)

Item No.	Part No.	Description	Qty	Item No.	Part No.	Description	Qty
1	TH164-1GM	Hopper	1	29	TH164-29	M8x75 Hex Bolt	1
2	TH164-2	Ø6 Big Flat Washer	16	30	TH164-30	Spacer	1
3	TH164-3	M6x40 Hex Bolt	15	31	TH164-31	Fixed Crossover Tube	1
4	TH164-4	R Pin	1	32	TH164-32	Plastic Cap	3
5	TH164-5	Bearing	2	33	TH164-33GM	Support Leg	1
6	TH164-6	Fixed Adjustable Plate	1	34	TH164-34	M6x35 Hex Bolt	2
7	TH164-7	Active Adjustable Plate	1	35	TH164-35GM	Handle	1
8	TH164-8	Base for Spring	1	36	TH164-36	Handle Cover	2
9	TH164-9	M6 Lock Nut	22	37	TH164-37	Axle Bushing	2

10	TH164-10	Spring	1
11	TH164-11	M8 Lock Nut	3
12	TH164-12	Ø8 Flat Washer	2
13	TH164-13	Fixed Plate for Connecting Rod	1
14	TH164-14	Impeller	1
15	TH164-15	Wheel	2
16	TH164-16	Ø5×35 Cotter Pin	2
17	TH164-17	Ø16 Flat Washer	8
18	TH164-18	Screen	1
19	TH164-19	Axle	1
20	TH164-20	Inner Axle Bushing	2
21	TH164-21	Outer Axle Bushing	2
22	TH164-22	Ø5×8 Rivet	2
23	TH164-23GM	Frame Tube Assembly	1
24	TH164-24	Pinion Gear	1
25	TH164-25	Swivel Axle	1
26	TH164-26	M4×20 Screw	1
27	TH164-27	Ø3×16 Spring Pin	1
28	TH164-28	Solid Linkage	1

38	TH164-38GM	Crossover Tube	1
39	TH164-39	Ø4×30 Spring Pin	2
40	TH164-40	Bracket	1
41	TH164-41	M6×20 Hex Bolt	7
42	TH164-42	M6×25 Bolt	1
43	TH164-43	Ø8 Lock Washer	1
44	TH164-44	Connecting Plate	1
45	TH164-45	Spacer	1
46	TH164-46	Wing Nut	1
47	TH164-47	Adjusting Handle	1
48	TH164-48	Handle Cover	1
49	TH164-49	Ø6 Spring Washer	7
50	TH164-50	Nylon Washer	1
51	TH164-51	Shaft Support Plate	1
52	TH164-52	Rain Cover	1
53	TH164-53	Drive Pin	1
54	TH164-54	Gear (Driver)	1
55	TH164-55	Shaft Support Cap	1
56	TH164-56	Wheel Bushing	2

GJ HANDY & CO LTD USER WARRANTY POLICY

Users Statement of Warranty

Each new machine is warranted against defective material or assembly of material under normal usage. The warranty applies to the original purchaser and covers faulty parts and the labour involved in replacing and repairing those parts, which are of original manufacture.

Period of Warranty

The Handy (Petrol & Electric only), Webb (excludes Dynamic, Heritage, Legacy), Sanli Engine

1. 2 years from the original date of sale to the first domestic
2. 90 days from the original date of sale to the professional/commercial
3. 90 days from the original date of sale when used for
4. A reduced warranty period of 90 days applies to those items which are subject to normal wear and tear (e.g. but not limited to wheels, tyres, cutter bars, cylinders, cutting blades, blade boss, belts, cables, nylon line & spool, collection bags, spark plugs).
5. Engines are supplied with a separate warranty to the machine. The engine manufacturers warranty statement which will be supplied within the engine instruction manual. All enquiries and warranty repairs should be discussed with the engine manufacturer or approved warranty repair
6. 90 days from the original date of purchase for Replacement Spare Parts (unless normal wear & tear component, which are covered for 30 days).
7. All machines' must be serviced within the first 12 months from the original date of purchase to comply

with the warranty (if applicable), failure to do so will invalidate the 2nd year of the warranty.

Webb Dynamic, Heritage & Legacy, Handy (All non-Petrol & Electric), Mowerland, Q-Garden

1. 1 year from the original date of sale to the first domestic
2. 90 days from the original date of sale to the professional/commercial
3. 90 days from the original date of sale when used for
4. A reduced warranty period of 90 days applies to those items which are subject to normal wear and tear (e.g. but not limited to wheels, tyres, cutter bars, cylinders, cutting blades, blade boss, belts, cables, nylon line & spool, collection bags, spark plugs).
5. Engines are supplied with a separate warranty to the machine. The engine manufacturers warranty statement which will be supplied within the engine instruction manual. All enquiries and warranty repairs should be discussed with the engine manufacturer or approved warranty repair
6. 90 days from the original date of purchase for Replacement Spare Parts (unless normal wear & tear component, which are covered for 30 days).

All warranty repairs must be undertaken by an authorised service dealer. These dealers have been accredited by GJ Handy & Co Ltd and agree to only use genuine parts and follow our repair procedures.

Not covered by this warranty

1. The warranty policy does not cover any depreciation or damages caused by ordinary wear, rusting or corrosion, lack of correct maintenance or operation, misuse, abuse, lack of transportation or
2. The warranty policy does not cover any costs necessary for the standard periodic maintenance services instructed by the operator's manual, or service parts replacement which would include oil, filters, tyres, belts, brake linings, fuses, blades, seals and other service parts unless it can be proven that the item has evidence of faulty manufacture.
3. The warranty policy will not cover failure or damage caused as a result of parts or accessories being modified without the written approval of GJ Handy & Co Ltd.
4. The warranty policy will not cover the unit if non-genuine parts have been fitted and as a result damage has occurred to the
5. The warranty policy is non-transferable and is only applicable to the original

Disclaimer

1. This warranty is only a remedy for defect of products. GJ Handy & Co Ltd will never warranty in terms of the merchantability or the fitness for a particular purpose.
2. No person is authorised to make any warranties, representations or promises, expressed or implied, on behalf of GJ Handy & Co Ltd, or to modify the terms conditions or limitation of this warranty policy in any
3. Neither GJ Handy & Co Ltd nor any company affiliated with GJ Handy & Co Ltd shall be liable in any event or manner whatsoever for incidental or consequential damages or injuries, including, but not limited to, loss of crops, loss of profit, out of pocket expenses or profits, rental of substitute equipment or other commercial

General

1. Most warrantable failures show up within the first few weeks of use. These failures are usually straightforward and warranty assessment is relatively easy.
2. Failures relating to cutter decks and belts need careful investigation, as the cause may not always be Look for damage to blades and pulleys especially when the cutter belt or blade boss have snapped or cracked as this could be due to impact damage.
3. Customers should always refer to the operator/instruction manual when any disputed problem arises, you will find most areas covered within the

VERSION 8 01-2020

NOTES

For spares or support of your product, please contact us:



Tel: 01793 333212

Email: customerservice@handydistribution.co.uk

**Opening Hours Weekdays: February to October 8:00am – 5:00pm November to January 8:30am – 5:00pm
(CLOSED WEEKENDS & BANK HOLIDAYS)**

Read More About This Manual & Download PDF:

Documents / Resources

 	<p>The HANDY THS125 Push Broadcast Spreader Machine [pdf] Instruction Manual THS125, 1938137001, THS125 Push Broadcast Spreader Machine, Push Broadcast Spreader Machine, Broadcast Spreader Machine, Spreader Machine, Machine</p>
--	---

References

-  [The Handy Garden Machinery](#)
-  [The Handy Garden Machinery](#)