



# THE CUT BUDDY 2007-TRM Beginners Clipper User Manual

[Home](#) » [THE CUT BUDDY](#) » THE CUT BUDDY 2007-TRM Beginners Clipper User Manual 

## Contents

- 1 THE CUT BUDDY 2007-TRM Beginners Clipper
- 2 Product Information
- 3 Cleaning & Maintenance
- 4 Precautions & Warranty
- 5 Product Returns
  - 5.1 2. Returns Process
- 6 Product Limited Warranty
  - 6.1 1. Limited Warranty
  - 6.2 2. Warranty Periods
  - 6.3 3. Warranty Claim Process
  - 6.4 4. Warranty Disclaimer
- 7 Let's Connect
- 8 COMPONENTS
- 9 FEATURES
- 10 HOW TO CHARGE
- 11 FIXED LENGTH FUNCTION
- 12 BLADE REMOVAL & INSTALLATION
- 13 QR SCAN
- 14 Documents / Resources
  - 14.1 References
- 15 Related Posts



**THE CUT BUDDY 2007-TRM Beginners Clipper**



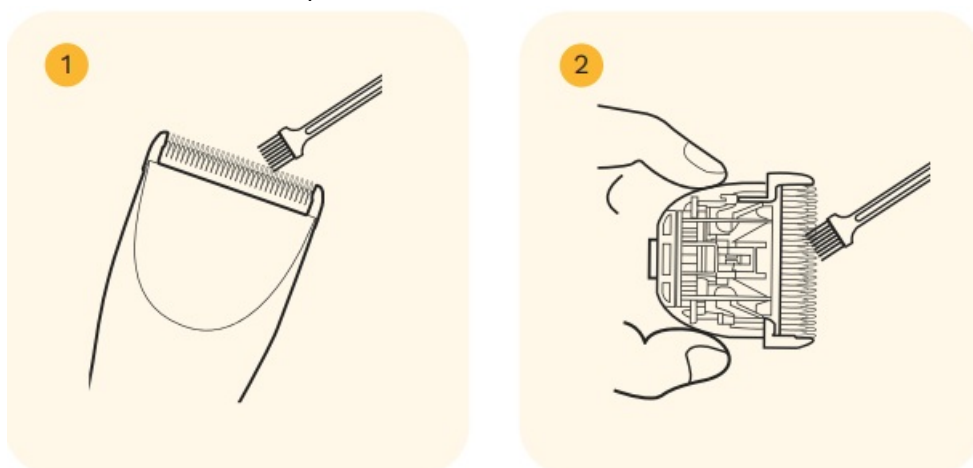
## Product Information

### Beginners Clipper Cordless Hair & Beard Clipper

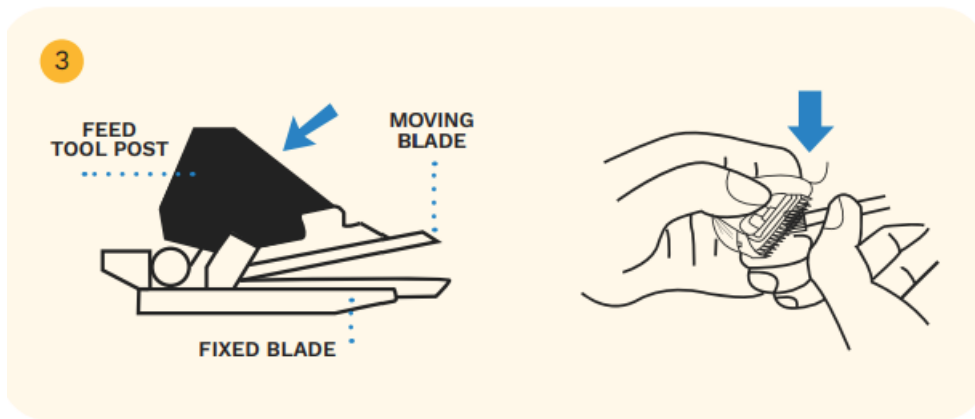
The Beginners Clipper Cordless Hair & Beard Clipper is a grooming tool that allows for easy and efficient hair and beard trimming. It features a ceramic blade with an acute angle and a 5-speed fine-tuning for the blade. The device is cordless, making it convenient to use without being tethered to an electrical outlet.

## Cleaning & Maintenance

To clean the taper blade, follow these steps:



1. Clear the blade with the cleaning brush.
2. Remove the blade for cleaning.



3. The white moving blade can be clicked down, and then you can clean the hair between the moving blade and the fixed blade.

## Precautions & Warranty

During use or charging, it is important to recycle or dispose of the product properly when the battery runs out. Never discard casually.

**WARNING:** This product is forbidden for use on genital hair. We are not responsible for any physical injury caused by this product. This product is forbidden to trim the hair of pets. We are not responsible for pet injury or equipment failure.

- Please do not disassemble product.
- Product is IPX6 washable and can be rinsed under a faucet. Do not submerge in water.
- Please do not use alcohol/petrol/toluene to clean or maintain it.
- Do not charge in extreme temperatures above 104°F or below 30°F.
- The product can produce a little heat during use or charging.
- Please remove the battery safely and recycle or dispose properly when the battery runs out. Never discard casually.

## Product Returns

### 1. Return Policy

All of our products carry a 30-day return policy. If you are not satisfied with a product you purchased from THECUTBUDDY.com, you can return it for a refund within 30 days of your receipt of the product.

Please note, if you ordered a kit or bundled package, such as the 35 Piece Beginners Kit or the 3 Step Ingrown Hair Shave Bundle, it must be returned in its entirety. We are unable to accept partial returns for individual products within a package.

For products purchased from an authorized dealer, their return policy applies — please contact them directly for more information. To the extent allowed by applicable law, products purchased from an unauthorized retailer are not covered by our return policy.

### 2. Returns Process

Refunds will be returned to the original form of payment. For exchanges, return your product for a refund and place a new order on THECUTBUDDY.com for the correct item. For warranty claims, see the PRODUCT LIMITED

WARRANTY section below.

We reserve the right to limit returns and to track returns initiated from the same name, email address, billing address, mailing address, or IP address. If we believe that a customer or potential customer has been or is likely to take advantage of our return policy, or otherwise purchase products for reasons other than personal use, we reserve the right to deny sales or returns to any customer.

## **Product Limited Warranty**

### **1. Limited Warranty**

The Beginners Clipper Cordless Hair & Beard Clipper comes with a 1-year warranty period from the date of purchase. This warranty only applies to products purchased from THECUTBUDDY.com or an authorized dealer and used only as intended and in accordance with the product's instructions.

To approve your warranty claim, the following conditions must be met:

- You must have purchased the product from THECUTBUDDY.com or an authorized THE CUT BUDDY™ dealer
- You must provide proof of your product purchase date
- If requested, you must return the product to THE CUT BUDDY™

We warrant solely to the person who originally purchased the products listed below, that those products will be free from defects in workmanship and materials for their applicable Warranty Period, subject to these conditions. The warranty does not cover (i) normal wear and tear, (ii) defects caused by third-party modifications, repairs, replacement parts, or accessories, (iii) misuse, misapplication, negligence, or failure to maintain or use in accordance with the product's instructions, or (iv) purchased, delivered, or used outside of the United States.

To approve your warranty claim, the following conditions must be met: (a) you must have purchased the product from THECUTBUDDY.com or an authorized THE CUT BUDDY™ dealer; (b) you must provide proof of your product purchase date; (c) if requested, you must return the product to THE CUT BUDDY™; and (d) you must have used the product only as intended and in accordance with the product's instructions.

If a defect occurs under these circumstances and during the Warranty Period, we will repair or replace, at our discretion, the defective product or part, as the sole and exclusive remedy for any approved warranty claim. We may not be able to replace discontinued products. If not, we will replace these products with an equivalent model based on availability. We may make changes to products and designs in the time you purchased your product and submitted a warranty claim. Products repaired or replaced under this warranty may or may not incorporate these changes.

### **2. Warranty Periods**

The warranty period for the Beginners Clipper Cordless Hair & Beard Clipper is 1 year from the date of purchase.

### **3. Warranty Claim Process**

To initiate a warranty claim, please contact us. If your claim is approved, we will provide a prepaid shipping label to you. Once we receive and inspect your returned product, we will send you an email to let you know that we have received your product and are processing your request. We generally will notify you of our decision regarding your warranty claim within 5 to 7 business days after receiving your product.

To initiate a warranty claim, please visit our Contact Us page, select "Warranty/Replacement" from the page, and complete the rest of the form with all requested details. Alternatively, you can contact our customer support team at: [info@thecutbuddy.com](mailto:info@thecutbuddy.com) and provide at least the following information:

- **(a)** product purchased,
- **(b)** Order Number (if you purchased directly from THECUTBUDDY.com),
- **(c)** name of seller (if product was purchased from an authorized THE CUT BUDDY™ dealer),
- **(d)** proof of product purchase date,
- **(e)** whether the package is opened or unopened, and
- **(f)** a brief description of the problem you are experiencing. If your claim information is confirmed as complete and timely, we will issue you a Return Material Authorization (RMA) tracking number. If requested to return your product to THE CUT BUDDY™, we will provide a prepaid shipping label to you. Once we receive and inspect your returned product, we will send you an email to let you know that we have received your product and are processing your request. We generally will notify you of our decision regarding your warranty claim within 5 to 7 business days after receiving your product.

#### **4. Warranty Disclaimer**

The warranty does not cover products that have been delivered or used outside of the United States. THERE ARE NO EXPRESS WARRANTIES OTHER THAN THE LIMITED WARRANTY PROVIDED ABOVE. IMPLIED WARRANTIES, INCLUDING ANY IMPLIED WARRANTIES OF MERCHANTABILITY OR FITNESS FOR ANY PARTICULAR PURPOSE, ARE LIMITED TO THE DURATION OF THIS EXPRESS LIMITED WARRANTY. Some states do not allow limitations on how long an implied warranty lasts, so the above limitation may not apply to you. UNDER NO CIRCUMSTANCES OR ANY THEORY OF RECOVERY, WHETHER FOR BREACH OF WARRANTY, BREACH OF CONTRACT, NEGLIGENCE, OR OTHER TORT, OR ANY STRICT LIABILITY THEORY, WILL THE CUT BUDDY BE LIABLE FOR ANY SPECIAL, INCIDENTAL, OR CONSEQUENTIAL DAMAGES. Some states do not allow the exclusion or limitation of incidental or consequential damages, so the above limitation or exclusion may not apply to you. This warranty gives you specific legal rights, and you may also have other rights which vary from state to state. No THE CUT BUDDY™ reseller, agent, or employee is authorized to make any modification, extension, or addition to this warranty. This warranty does not apply if you purchased your product other than directly from our website or an authorized retailer.

#### **Let's Connect**

If you have any questions about the product, please feel free to contact us and we will reply to you within 24 hours.

Connect with us on social media:

- @thecutbuddy

#### **COMPONENTS**



## PARAMETERS

Professional Hair Clipper	Motor	Operating voltage: 3.7V
		Centering material: anti-wear brass
	Battery	1200 mA Li-ion battery
		Charging time: about 2 hours
		Operating time on full charge: 220 minutes
USB Charging		DC 5V1A (usb adapter not included)

## FEATURES

- Battery percentages display (00-99)
- Press 3 seconds to automatically lock, then press 3 seconds to open directly

REMAIN POWER

99

CHILD  
PROTECTIVE  
LOCKS

## HOW TO CHARGE

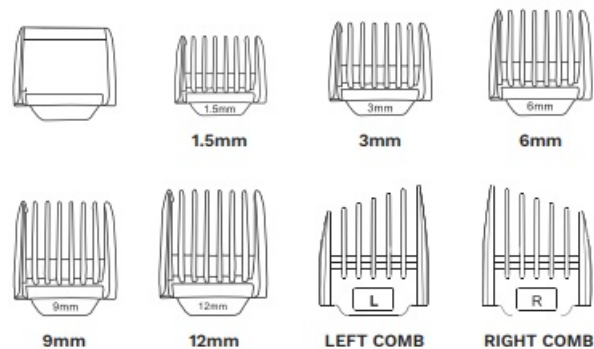
The product will lock automatically by pressing the switch 3 seconds, and it can be opened directly after pressing the switch 3 seconds. The button below switch is used to adjust speed. High, middle and low speeds are included.

1. Plug the charging cable into the clipper, plug usb into 5V1A usb adapter (computer/PC/power bank/car charger).
2. The digital LCD dynamically displays charging status.
3. Plug the adapter plug into an electrical outlet after confirming that the clipper power is off.

## FIXED LENGTH FUNCTION

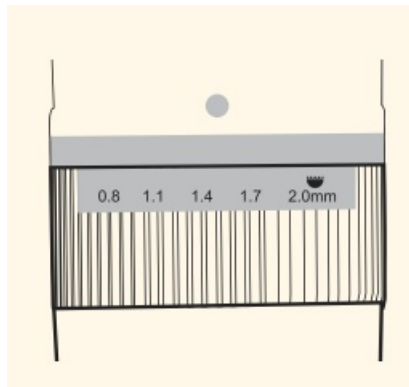
### SELECT APPROPRIATE GUIDE COMB

The different sized attachments work as guide combs which can meet all your requirement of different haircut length (the left and right combs can help you control the trimming orientation and make your hair stylish). The attachments also work as guard combs which make cutting your hair safe and easy.



Multiple sizes to get the job done right!

- **Fine tune the blade:** Moving the button left and right to adjust the blade (0.8mm-2.0mm)

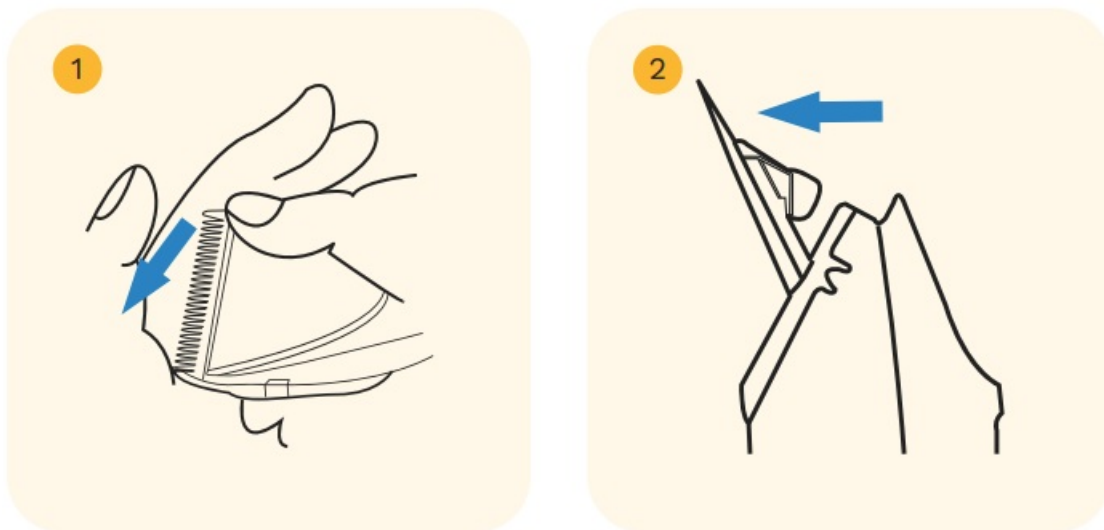


- **Guards installation:** As pictured, hold both sides and push until grooves align and pop into position.
- **Guards dismantle:** Remove the butted positions with hands on its both sides and then remove the comb.



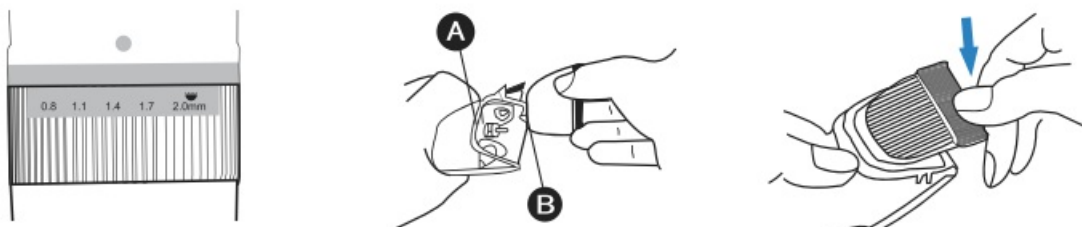
## BLADE REMOVAL & INSTALLATION

### BLADE REMOVAL



- Press down the moving blade with the thumb and then remove the blade.
- Make sure to hold with the other hand to avoid the blade falling off.

### BLADE INSTALLATION






- Set the adjustable ring to 2.0mm before installing the blade.
- Direct the blade (B) at the hair clipper's slot (A) and plug in.
- Push the blade down until it clicks.

If you have any questions about the product, please feel free to contact us and we will reply to you within 24 hours.

## QR SCAN



## Documents / Resources

	<a href="#">THE CUT BUDDY 2007-TRM Beginners Clipper</a> [pdf] User Manual 2007-TRM Beginners Clipper, 2007-TRM, Beginners Clipper, Clipper
---	--

## References

- 🦊 [Best Beginner Bald Shavers, Hair Trimmers and Clippers – The Cut Buddy](#)