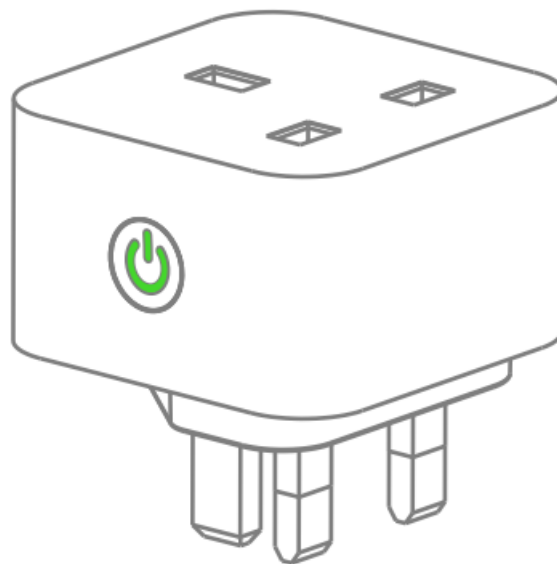


TFC GROUP OP-WFP Wi-Fi Smart Socket Instructions

[Home](#) » [TFC Group](#) » TFC GROUP OP-WFP Wi-Fi Smart Socket Instructions 



**Wi-Fi SMART SOCKET
OP-WFP INSTRUCTIONS**



Contents

- [1 Product configuration](#)
- [2 Specifications](#)
- [3 Configuration Preparation](#)
- [4 Set up the device](#)
- [5 Care and Maintenance Firmware Update](#)
- [6 Documents / Resources](#)

Product configuration

Congratulations on purchasing the OPTIMUM

Product configuration Congratulations on purchasing the OPTIMUM OP-WFP Wi-Fi Smart Socket. Now you can turn your power on and off manually or according to your schedule through the Smart Life – Smart Living app installed on your device from anywhere where you have an Internet or data connection.

The app also allows you to monitor your Power consumption in real time for model OP-WFP Good for you and good for the environment.

Specifications

Maximum current	13A
Input voltage	AC (220-240)V
Max.Load power	2990 W
Wireless Type	Wi-Fi 2.4 GHz
Controls	Manual on/off
Operating temperature	(-20 – +50)°C
Operating humidity	(0 – 95) % RH, non-condensing

Configuration Preparation

Download the smart phone application by scanning the QR Code or searching for Smart Life – Smart Living in the Apple App Store for iPhones, or Google Play for Android phones.



<https://www.tfc-group.co.uk/QR-red>

Launch the app and log in. New users will need to register a new account. 3. Plug the Wi-Fi Smart Socket into a mains outlet and turn on the outlet power switch. The LED should be green.

Register

USA

>

Mobile Number/Email

Get Verification Code

☒ I Agree [User Agreement](#) and [Privacy Policy](#)

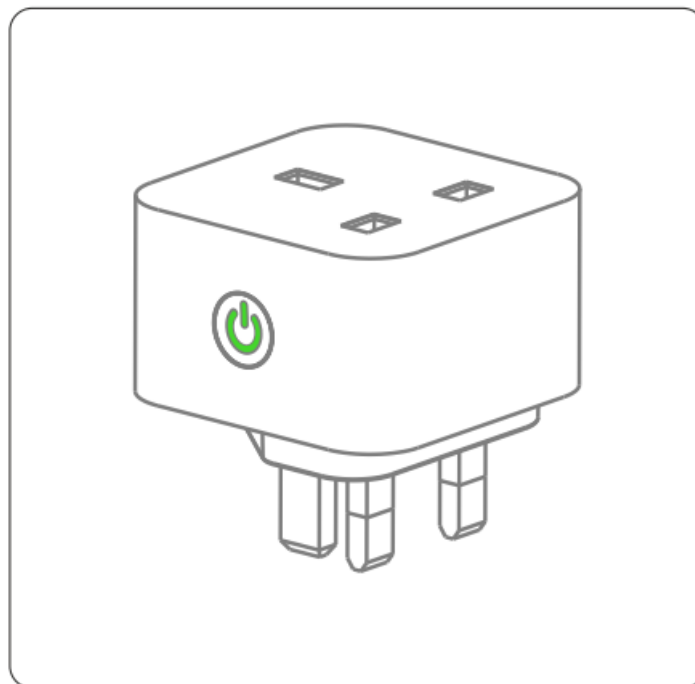
Where Not to Install Your Wi-Fi Smart Socket



Do NOT install the Wi-Fi Smart Socket in wet or damp areas such as bathrooms and laundries.

Configuration

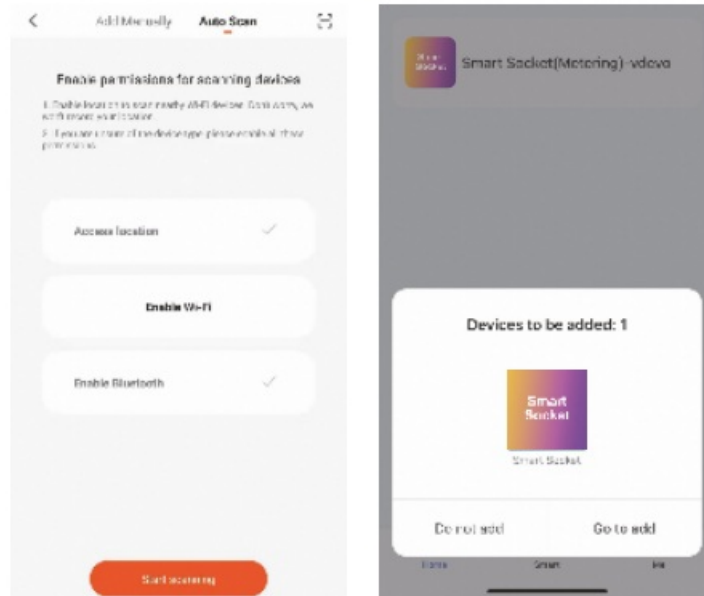
Press the on/off button on the Wi-Fi smart socket. The LED will flash rapidly green.



Note: If the LED does not flash, try resetting the device (see Reset on page 10).

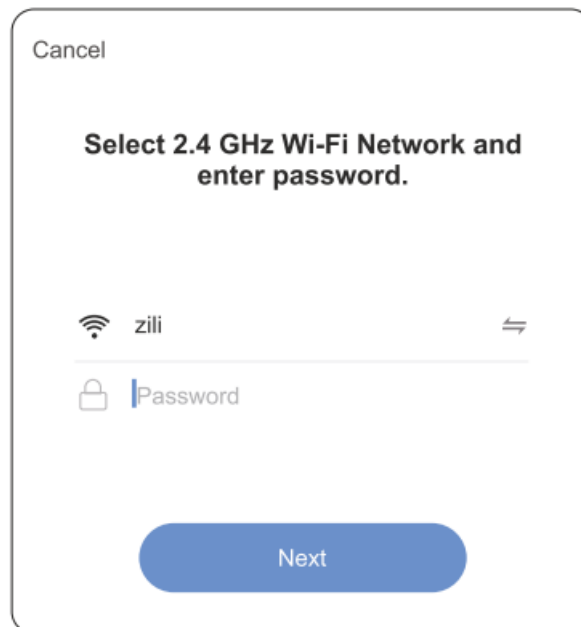
Auto Scan:

While the green LED is flashing, the Bluetooth connection will automatically find the device when you open Smart Life.



Enter password

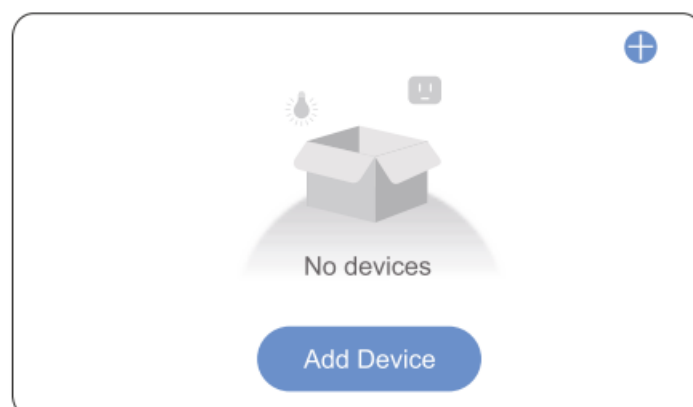
Search for the Wi-Fi hotspot and enter the hotspot password.



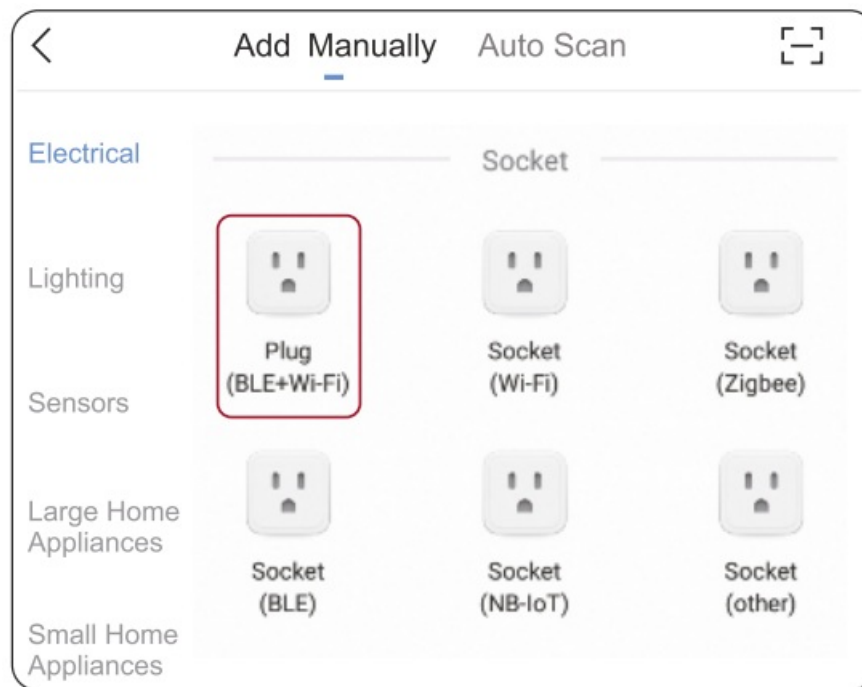
Tap Next. Observe that the device is connecting to the application.

Add Manually:

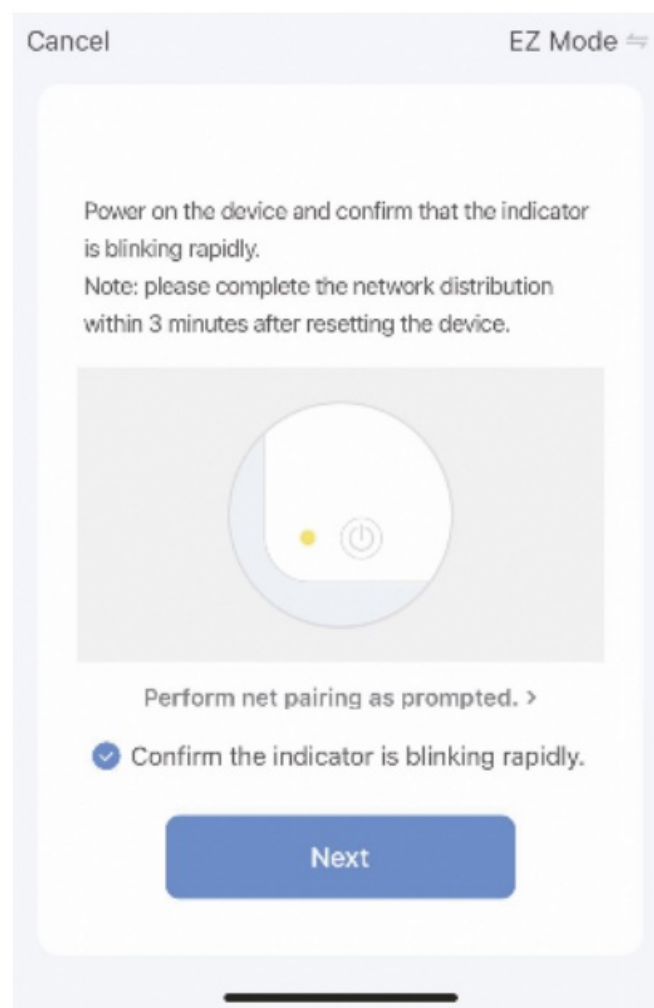
1. Tap Add Device or tap “+” on top right corner.



2. Select device type Socket (Vi)

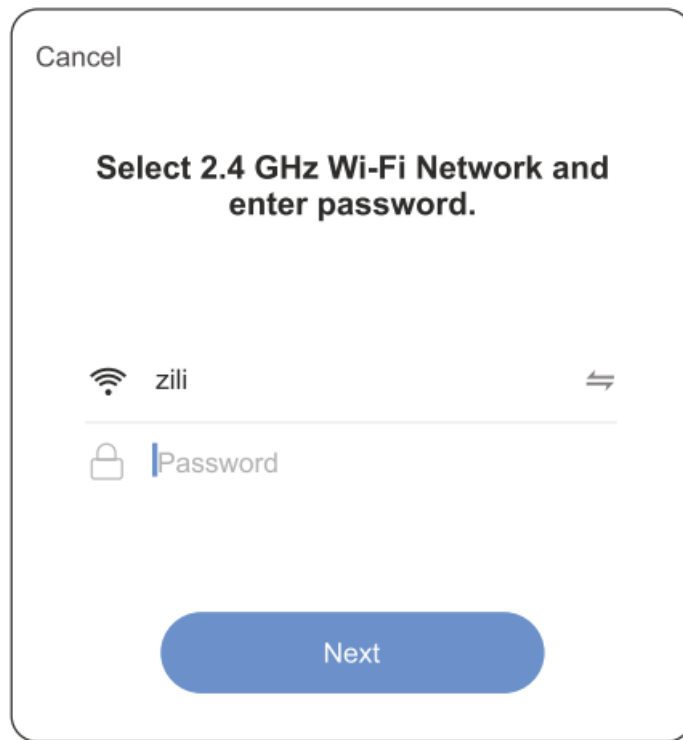


Set up the device



Enter Password

Search for the Wi-Fi hotspot and enter the hotspot password

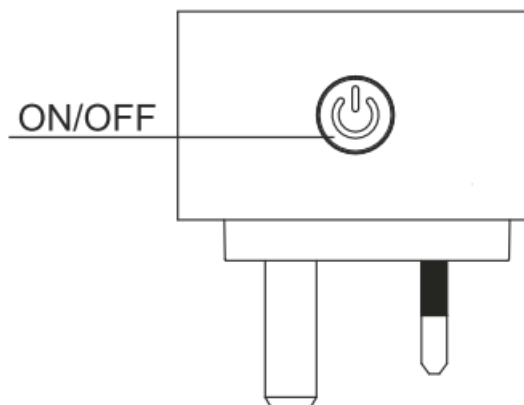


Tap Next. Observe that the device is connecting to the application.

Reset

If the Wi-Fi smart socket fails to respond to commands, it may need to be reset.

1. Unplug the Wi-Fi smart socket from the mains outlet.
2. Plug the device back into the mains outlet and turn on the outlet power switch.
3. Press and hold the Manual Control Button until the LED indicator flashes quickly (between 5 s and 10 s).
4. Follow the steps above in **Configuration** on page 4 to set up the device.



Change Device Name

1. Tap *Device List* to see a list of connected
2. Tap *Modify Device Name* and enter a new name for your Wi-Fi Smart Socket. Note: If the Wi-Fi smart socket is going to be controlled by a Smart Speaker, choose an unambiguous, clear sounding name.

Share Devices

1. In Profile, tap Device Sharing.

2. Tap Add.
3. Select the device to share.
4. Enter the telephone number or email address of the person you want to share with.
5. Tap Confirm.

Schedule

Schedules can be added to turn devices on or off at preset times and days of the week.

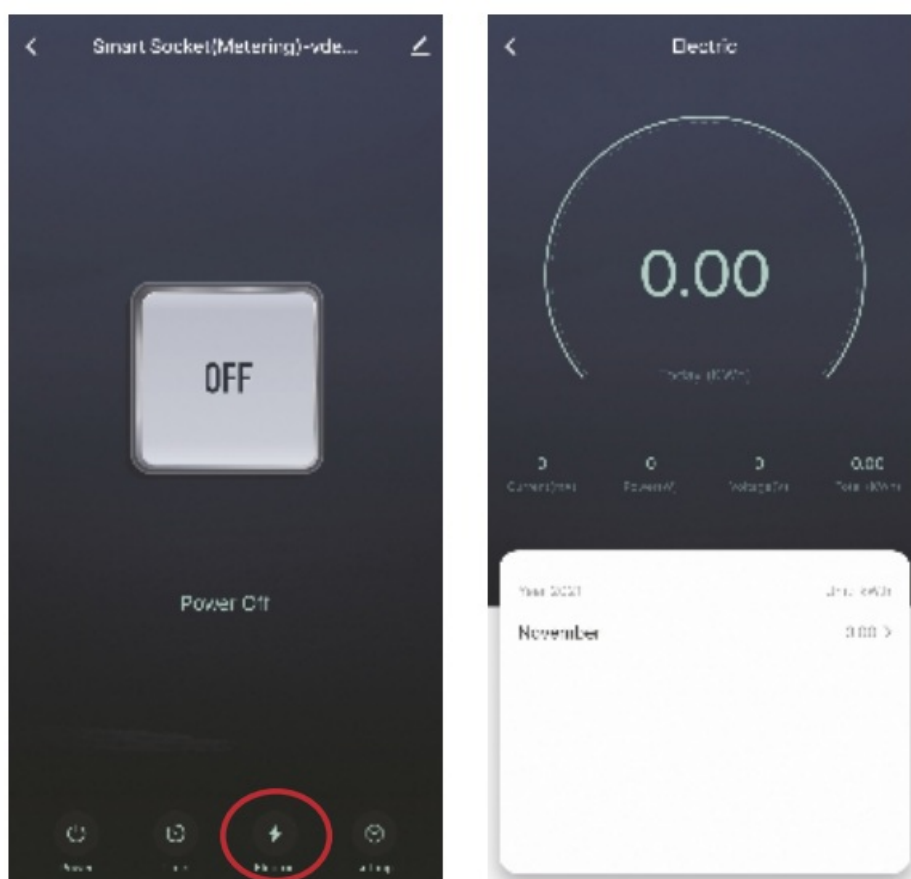
The schedules can be once or repeated on certain days of the week.

To activate a schedule:

1. From the Devices screen, tap the Smart Socket, then select Schedule.
2. Tap Add Schedule. 3. Set up the desired Schedule.

Metering

Press Electric icon to set energy meter



Care and Maintenance Firmware Update

New features may be added to the firmware embedded in your Wi-Fi smart socket. To check for updates to firmware:

1. Tap Info.
2. Tap Check for Firmware Update..

Remove Device

1. To remove the device from the application list, tap info (•••) at the upper right-hand corner of the application.

2. Tap Remove Device to remove the device.

TOWER – TFC GROUP LLP

Tower House, Vale Rise, Tonbridge, Kent TN9 1TB



Documents / Resources

	<p>TFC GROUP OP-WFP Wi-Fi Smart Socket [pdf] Instructions</p> <p>OP-WFP Wi-Fi Smart Socket, OP-WFP, Wi-Fi Smart Socket, Smart Socket, Socket</p>
---	--

Manuals+.