



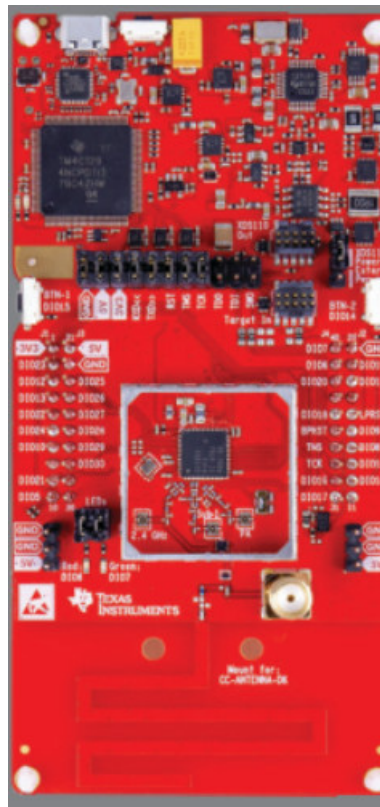
TEXAS INSTRUMENTS LAUNCHXL-CC1352P1 LaunchPad Kit with SimpleLink Wireless MCU User Guide

[Home](#) » [Texas Instruments](#) » TEXAS INSTRUMENTS LAUNCHXL-CC1352P1 LaunchPad Kit with SimpleLink Wireless MCU User Guide 



**TI LaunchPad™ kit with
SimpleLink™ Wireless MCU**

Microcontroller development kit for rapid prototyping featuring the CC1352P microcontroller
PART NO: LAUNCHXL-CC1352P1

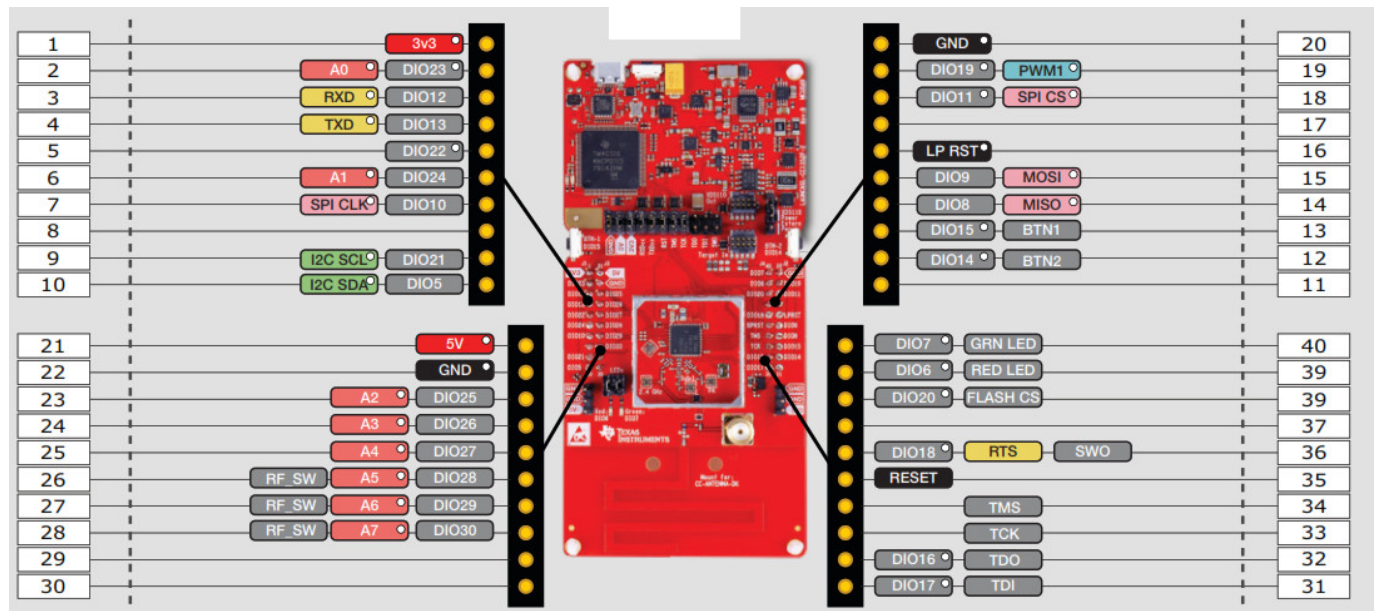


LAUNCH YOUR DESIGN

START @

dev.ti.com/launchxl-cc1352p1

Pin aligns with LaunchPad pinout standard.



LAUNCH YOUR DESIGN @ dev.ti.com/launchxl-CC1352P1

© 2018 Texas Instruments Incorporated. The platform bar, SimpleLink, and LaunchPad are trademarks of Texas Instruments.

All other trademarks are the property of their respective owners.

SWAU108A

IMPORTANT NOTICE AND DISCLAIMER

TI PROVIDES TECHNICAL AND RELIABILITY DATA (INCLUDING DATASHEETS), DESIGN RESOURCES (INCLUDING REFERENCE DESIGNS), APPLICATION OR OTHER DESIGN ADVICE, WEB TOOLS, SAFETY INFORMATION, AND OTHER RESOURCES “AS IS” AND WITH ALL FAULTS, AND DISCLAIMS ALL WARRANTIES, EXPRESS AND IMPLIED, INCLUDING WITHOUT LIMITATION ANY IMPLIED WARRANTIES OF MERCHANTABILITY, FITNESS FOR A PARTICULAR PURPOSE OR NON-INFRINGEMENT OF THIRD PARTY INTELLECTUAL PROPERTY RIGHTS. These resources are intended for skilled developers designing with TI products. You are solely responsible for (1) selecting the appropriate TI products for your application, (2) designing, validating, and testing your application, and (3) ensuring your application meets applicable standards, and any other safety, security, or other requirements. These resources are subject to change without notice. TI grants you permission to use these resources only for the development of an application that uses the TI products described in the resource. Other reproduction and display of these resources is prohibited. No license is granted to any other TI intellectual property right or to any third-party intellectual property right. TI disclaims responsibility for, and you will fully indemnify TI and its representatives against, any claims, damages, costs, losses, and liabilities arising out of your use of these resources. TI's products are provided subject to TI's Terms of Sale (www.ti.com/legal/termsofsale.html) or other applicable terms available either on ti.com or provided in conjunction with such TI products. TI's provision of these resources does not expand or otherwise alter TI's applicable warranties or warranty disclaimers for TI products.

Mailing Address: Texas Instruments, Post Office Box 655303, Dallas, Texas 75265 Copyright © 2020, Texas Instruments Incorporated

Contents

[1 Documents /](#)

[Resources](#)

[2 Related Posts](#)

Documents / Resources



[TEXAS INSTRUMENTS LAUNCHXL-CC1352P1 LaunchPad Kit with SimpleLink Wireless MCU \[pdf\] User Guide](#)
LAUNCHXL-CC1352P1, LaunchPad Kit with SimpleLink Wireless MCU

[Manuals+](#)