

Teval Elektroonika FYK SERIES Single Phase Filters Owner's Manual

[Home](#) » [Teval Elektroonika](#) » Teval Elektroonika FYK SERIES Single Phase Filters Owner's Manual 

Contents

- [1 Teval Elektroonika FYK SERIES Single Phase Filters](#)
- [2 Product Information](#)
- [3 Product Usage Instructions](#)
- [4 Features](#)
- [5 Technical Specification](#)
- [6 Typical electrical schematic](#)
- [7 Filter Selection Table](#)
- [8 Physical Dimensions \(mm\)](#)
- [9 Typical filter attenuation](#)
- [10 Documents / Resources](#)
- [11 Related Posts](#)



Teval Elektroonika FYK SERIES Single Phase Filters



Product Information

The FYK SERIES is a line of single-phase filters designed for various applications such as datacom equipment, test and measurement equipment, and fitness machines. These filters are used to reduce electromagnetic interference (EMI) and ensure the smooth operation of electronic devices.

Key Features:

- **Rated Voltage:** 125/250VAC
- **Rated Currents:** 1 to 10A
- **Operating Frequency:** 50/60Hz
- **Hipot Rating (Line-to-line):** 1450VDC
- **Hipot Rating (Line-to-ground):** 2250VDC
- **Operating Temperature:** Suitable for standard operating conditions
- **Safety Compliance:** Meets relevant safety standards

The FYK SERIES filters are equipped with optional ground chokes and resistors to further enhance their performance. The ground choke has a resistance of 1M ohm and a minimum power rating of 1/4W.

The filters come in different models with varying rated currents, inductance, capacitance, and output connections. Refer to the Filter Selection Table below for more details.

Product Usage Instructions

To use the FYK SERIES single-phase filters, follow these steps:

1. Ensure that the power supply is disconnected before installation.
2. Select the appropriate filter model based on the desired rated current for your application. Refer to the Filter Selection Table for guidance.
3. Connect the filter to the power line by attaching the fast-on terminal or optional lead wire to the appropriate

input and output connections.

4. If using the optional ground choke and resistor, connect them as instructed in the user manual or schematic diagram.
5. Double-check all connections to ensure they are secure and properly aligned.
6. Once the filter is installed, reconnect the power supply and verify that the equipment operates smoothly without any noticeable EMI interference.

For further information on installation, safety precautions, and maintenance, please refer to the complete user manual provided with the product.

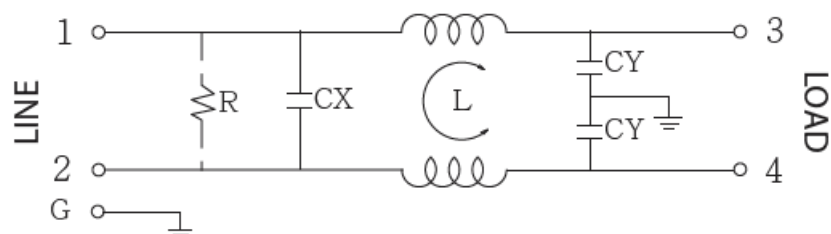
Features

- The FYK series is a general-purpose single-phase filter.
- The rated current can be offered from 1 to 10 amps.
- The compact size for easy installation and space-saving.
- Various output selections such as a fast-on terminal, and lead wire.
- Low leakage current version upon request.
- All parts are approved by UL, CSA, VDE and CE
- Applications comprising Electrical and electronic equipment, household equipment, Medical equipment, Datacom equipment, Test and measurement equipment, and Fitness machine.

Technical Specification

- Rated voltage 125/250VAC
- Rated currents 1 to 10A
- Operating frequency 50/60Hz
- Hipot rating(Line-to-line) 1450VDC
- Hipot rating(Line-to-ground) 2250VDC
- Operating temperature -25~+85°C
- Safety compliance UL, CSA, VDE, CE

Typical electrical schematic



With optional ground choke and resistor.

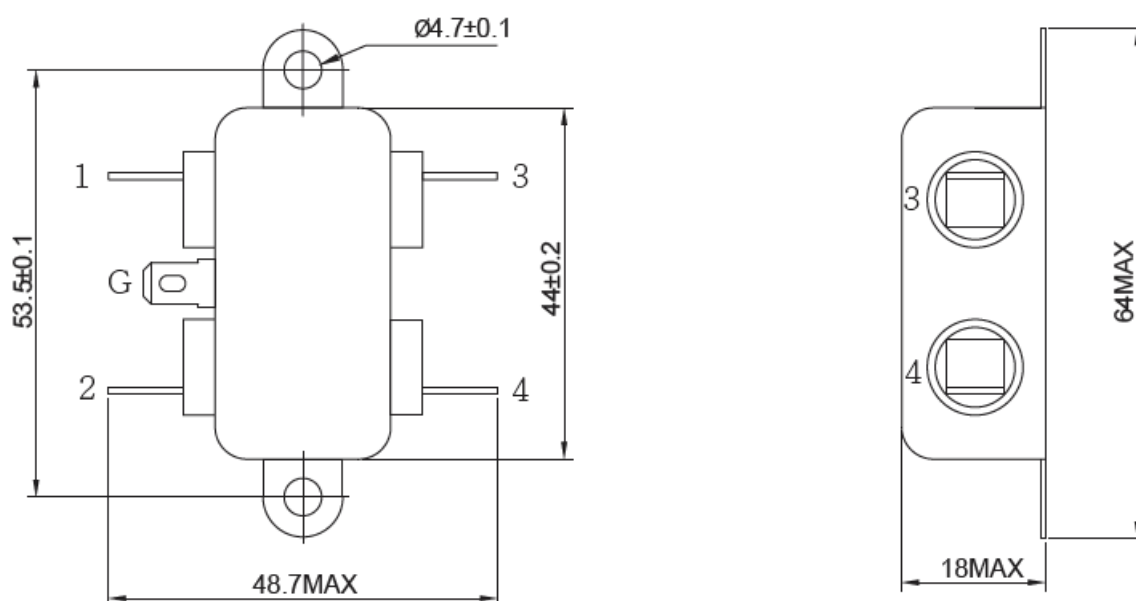
- R: 1M ohm, 1/4W min.

Filter Selection Table

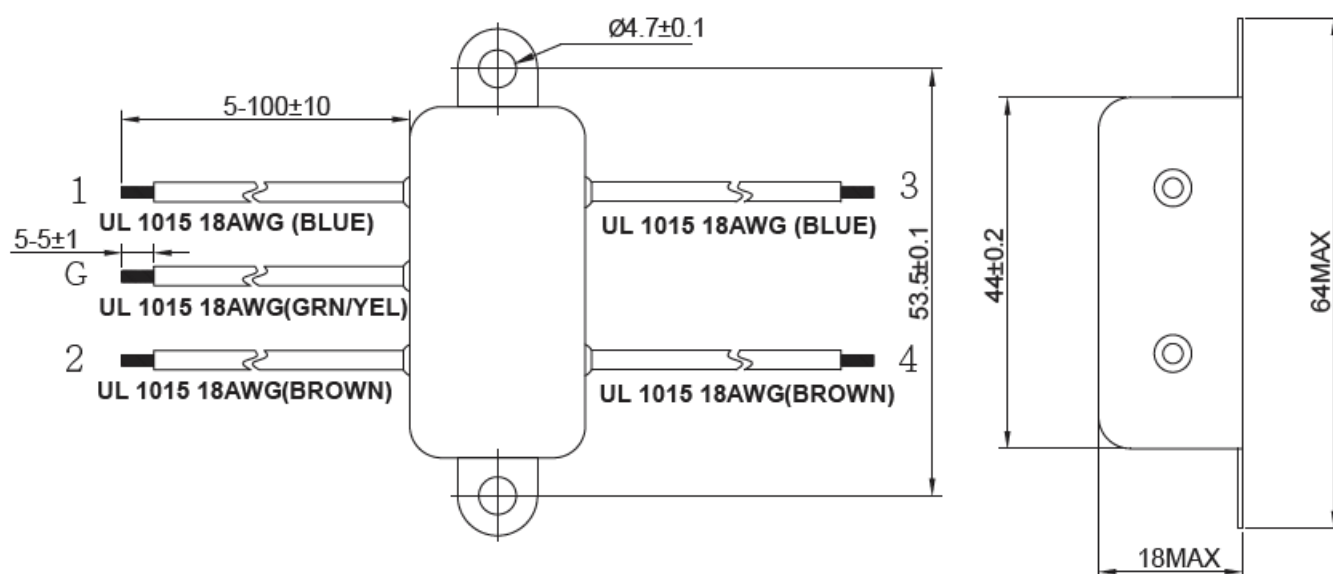
Part No.	Rated Current (A)	Inductance L(mH)	Capacitance CX (μ F)	Capacitance CY (pF)	Output connections
FYK01T1	1	3.7	0.1	3300	Fast-on terminal (optional lead-wire)
FYK03T1	3	1.8	0.1	3300	
FYK06T1	6	0.7	0.1	3300	
FYK10T1	10	0.3	0.1	3300	

Physical Dimensions (mm)

FYK-T1

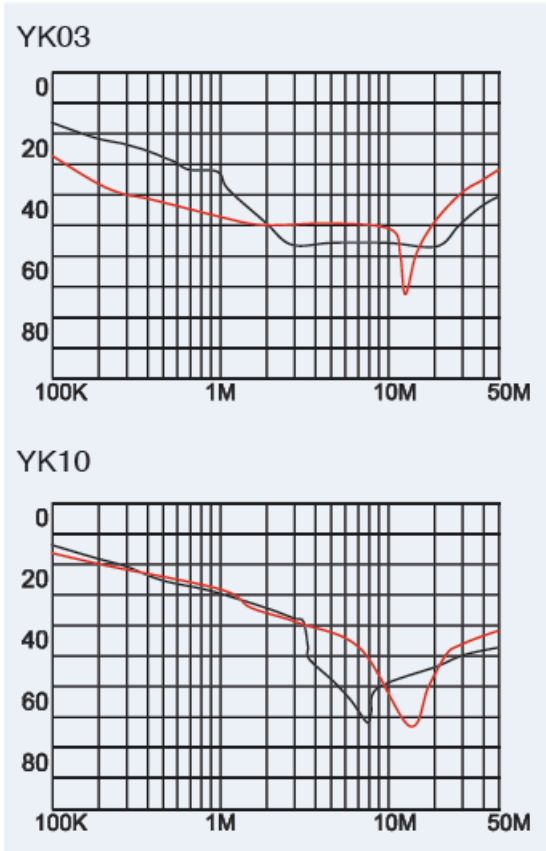
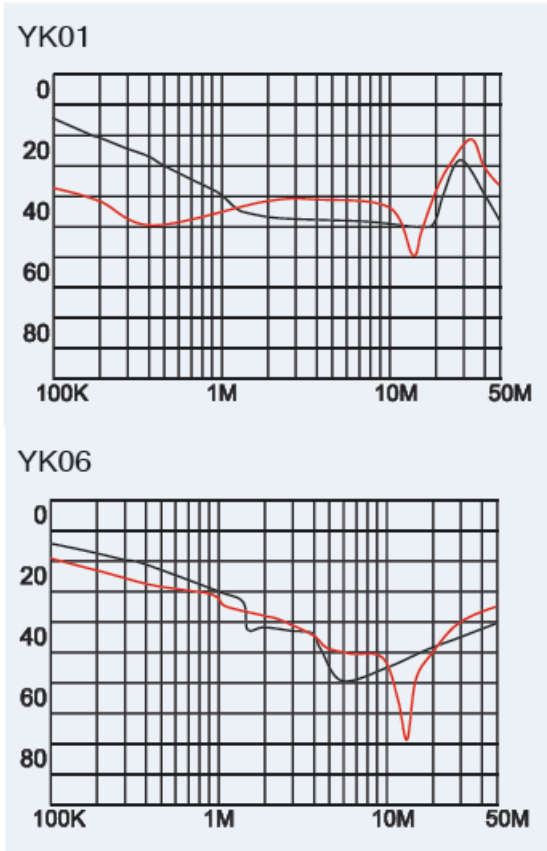


FYK-T (Lead-wire)



Typical filter attenuation

(Common mode – Normal mode)



Documents / Resources

FYK SERIES Single Phase Filters

Features

- High efficiency and low loss
- Low noise and vibration
- Long life and reliable
- Easy to install and maintain
- Wide range of applications

Technical Specifications

Model	Rated Power (W)	Rated Voltage (V)	Rated Current (A)	Rated Frequency (Hz)	Rated Temperature (°C)
FYK01T1	100	220	0.45	50	40
FYK03T1	300	220	1.35	50	40
FYK06T1	600	220	2.70	50	40
FYK10T1	1000	220	4.50	50	40

[Teval Elektroonika FYK SERIES Single Phase Filters](#) [pdf] Owner's Manual
FYK01T1, FYK03T1, FYK06T1, FYK10T1, FYK SERIES Single Phase Filters, SERIES Single Phase Filters, Single Phase Filters, Phase Filters, Filters