



Tetra Test NO3 Nitrate Test Kit Instruction Manual

[Home](#) » [Tetra](#) » Tetra Test NO3 Nitrate Test Kit Instruction Manual 

Tetra Test NO3 Nitrate Test Kit Instruction Manual

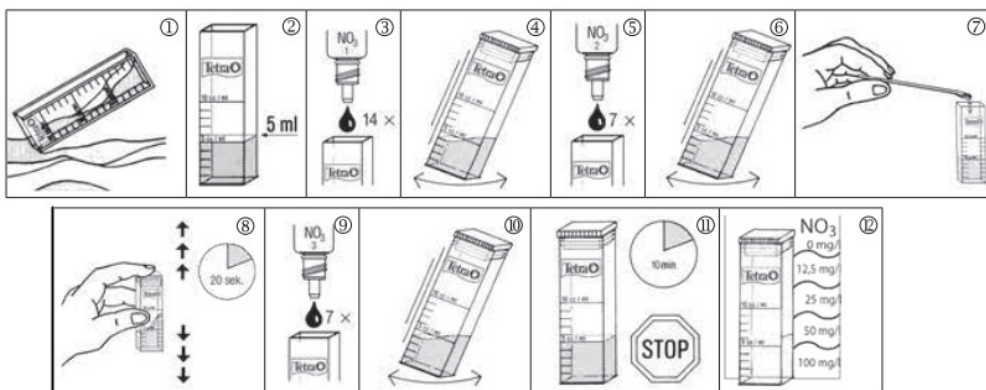
Tetra Test NO3-(nitrate)

For accurate measurement of the nitrate content in fresh water (aquarium and pond) and marine water

Contents

- 1 Test procedure**
- 2 Values and assessment**
- 3 Documents / Resources**
 - 3.1 References**

Test procedure



Please read this section completely before starting the test.
The test measures nitrate values ranging from 0 to 100 mg/l.

1. Rinse the test vial with the water to be tested.
2. Fill the vial to the 5 ml mark with the water to be tested.
3. Hold the bottle containing test reagent 1 upside down over the vial and add 14 drops.
4. Close the vial and shake gently.
5. Open the vial, hold the bottle with test reagent 2 upside down over the vial and add 7 drops.
6. Close the vial and shake gently.
7. Add 1 spoonful of the powder to the vial.
8. Close the vial and shake vigorously for 20 seconds. (The powder does not dissolve.)
9. Hold the bottle containing test reagent 3 upside down over the vial and add 7 drops.
10. Close the vial and shake gently.
11. Allow 10 minutes for the colour to develop. (The powder sinks to the bottom.)
12. Hold the vial around 1 cm (finger's width) in front of the white surface of the colour chart. Match the shade of the test solution to the colour it comes closest to on the colour chart and read the corresponding value. After each test, rinse the vial thoroughly with tap water.

Values and assessment

Optimum nitrate values:

- **Freshwater aquarium:** < 50 mg/l
- **Marine aquarium:** < 10 mg/l
- **Pond:** < 10 mg/l

What should I do if ...

... the nitrate content is too high? – Carry out partial water changes (30% each) until the nitrate content is less than 50 mg/l. Remove any dirt, such as plant and food remains. Before adding new tap water, treat it with Tetra Aqua Safe to make it safe for fish.

Advice: use Tetra NitrateMinus regularly in freshwater aquariums or Tetra NitrateMinus Pearls in marine aquariums. Ensure lush plant growth with Tetra PlantaMin, because plants remove nitrate as a nutrient from the water. To maintain optimum water quality we recommend that you check water values weekly. All Tetra Test products are easy to use and very accurate. They use professional methods to determine chemical water values. Available for all key water values.



Danger. Flammable liquid and vapour. Causes serious eye damage. Causes skin irritation. Very toxic to aquatic life with long lasting effects. Contains: hydrochloric acid, ethanol. If medical advice is needed, have product container or label at hand. Keep out of reach of children. Keep away from heat, hot surfaces, sparks, open flames and other ignition sources. No smoking. IF IN EYES: Rinse cautiously with water for several minutes. Remove contact lenses, if present and easy to do. Continue rinsing. IF ON SKIN: Wash with plenty of water. Dispose of contents/container in accordance with national regulations.



Tetra GmbH

Herrenteich 78

D-49324 Melle

www.tetra.net

Tel.: +49 5422 105-0

Made in Germany

Documents / Resources



[Tetra Test NO3 Nitrate Test Kit](#) [pdf] Instruction Manual
Test NO3 Nitrate Test Kit, Test NO3, Nitrate Test Kit, Test Kit

References

- [Find a variety of aquarium products now from the experts at Tetra: Tetra](#)

Manuals+.