



# Testrix Inspection Camera System User Manual

[Home](#) » [Testrix](#) » Testrix Inspection Camera System User Manual

Testrix Inspection Camera System User Manual

## INSPECTION CAMERA SYSTEM



**USER MANUAL**

## Contents [ [hide](#) ]

### [1 SAFETY](#)

### [2 BATTERY](#)

### [3 MAINTENANCE](#)

### [4 COMPONENTS](#)

### [5 KEY DIAGRAM](#)

### [6 Set-Up](#)

### [7 DVR Diagram](#)

### [8 How to use DVR](#)

### [9 Questions & Answer](#)

### [10 How to Release & Coiled Cable](#)

### [11 Specifications](#)

### [12 Documents / Resources](#)

### [13 Related Posts](#)

## SAFETY

Warning please read all safety warnings and all instructions before using this product. Neglect to follow the warnings and instructions may result in electrical shock, fire and potential injury.

- Do not expose the inspection camera to any moisture, gases or other material that may cause corrosion.
- Turn off the unit when not in use and store in a dry place .
- Ensure area is clean and well lit.
- Keep children and pets away from the unit while operating.
- This unit is not intended to be used by any person with limited physical, sensory, or mental capabilities.
- Only the camera head and fiberoptic cables are water resist ant.

## BATTERY

- Please fully charge the battery for the first time of receiving the unit.
- Charge the device when the power button turns red, red light blinking indicates battery is charging and when the light is off is when battery is full.
- Please charge device at least once every 3 months to prevent any damage to the battery.

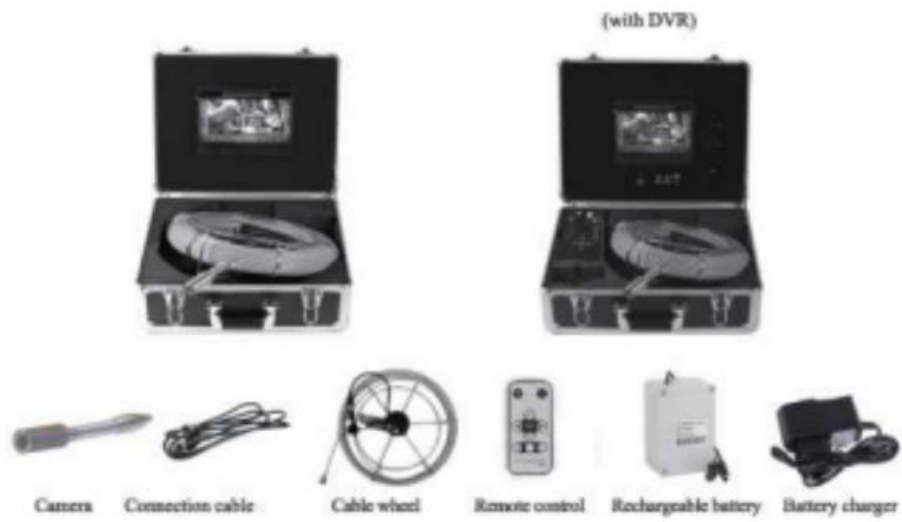


Never dispose of used batteries rechargeable Batteries in household waste. As consumers, users are legally required to take used batteries to appropriate collection sites, the retail store where the Batteries were purchased, or wherever Batteries are Do not instrument in household waste. The user is seated to take end-of-life devices to a designated collection point for the disposal of electrical and electronic equipment.

## MAINTENANCE

- Always keep lens clean and dry after every use .
- Should any component need replacement please contact our service agents.

## COMPONENTS



## KEY DIAGRAM

### 7" TFT LCD Monitor

1. AV selector
2. Image Flip
3. LED ON/ OFF
4. Menu
5. Menu Up
6. Menu Down
7. Power Switch



### Camera Head

1. LED Lights
2. Lens
3. Spring
4. Gold-tip Connector



(with 512Hz transmitter)

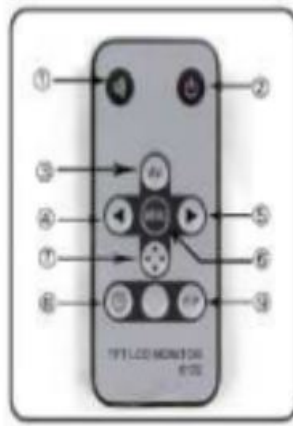
## Push Rod

1. Male Plug
2. Handle
3. Data Connector
4. Push Rod Reel



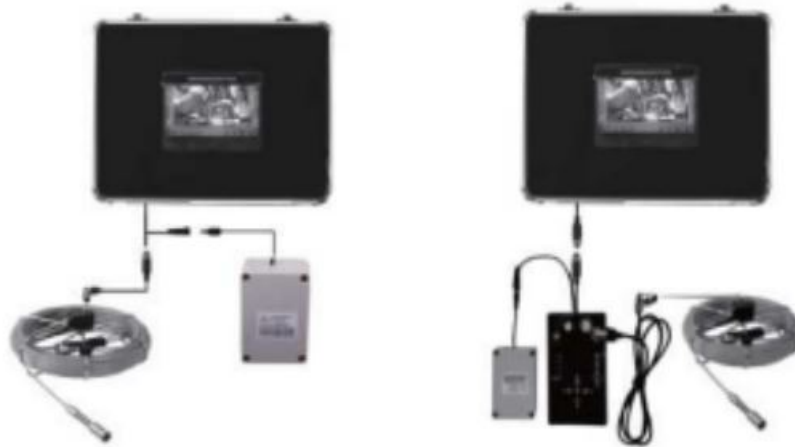
## Remote

1. Mute
2. Power
3. AV1/AV2 Switch
4. Adjustment -
5. Adjustment +
6. Menu
7. Mode Switch
8. Time
9. P.P Mode



## Set-Up

### Connection Set-up



*Figure 1 with DVR*

### Charge Set-up



## DVR Diagram

1. This DVR unit support SD card up to 16GB.
2. Photo Format: JPEG, Resolute ion 720×576
3. Video Format: AVI, QVGA {320×240}, or DI{720×480}

## Operation

Item	Key	Function
①	RECORD/PLAY	In Record mode, press to start to record the video, press it again to stop; In Play mode, press to playback the recorded video, press it again to stop;
②	MODE	Press to switch between the mode of Record or Playback
③	ZOOM-	Image reduction
④	ZOOM+	Image on large
⑤	ON/OFF	DVR function on / off
⑥	RIGHT	Switch to the manual the right side
(7)	UP	Switch to sub menu up
(8)	LEFT	Switch to the manual the left side
⑨	MENU	Menu button
⑩	DOWN	Switch to sub menu down



## DVR Function

1. This DVR function supports up to 16GB.
2. Photo Format: JPEG; Resolute ion 720×576
3. Video Format; AVI, QVGA {320×240}, or Di {720×480}

## How to use DVR



**Step 1:** Ensure all data cables are properly connected then turn knob to the right to “ON”

**Step 2:** To record press “SD” and it will start recording (As shown in picture 1) and to stop recording press “SD” and it will save the recordings (As shown in picture 2)



Picture 1



Picture 2

## Questions & Answer

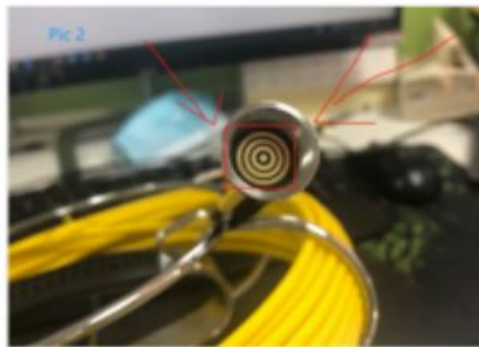
How to resolve the issue where the screen turns completely blue?

1. Check to ensure that all data cables are connected correctly and make sure that the camera head is securely tighten.
2. Check where the cable is broken from inside the spring {Look at picture 3 for guidance}
3. Unscrew camera head (pie. 1) and use a microfiber cloth to clean the copper coil (pie. 2); After cleaning, connect data cable then turn on control box afterwards connect the camera head.





Pic 1

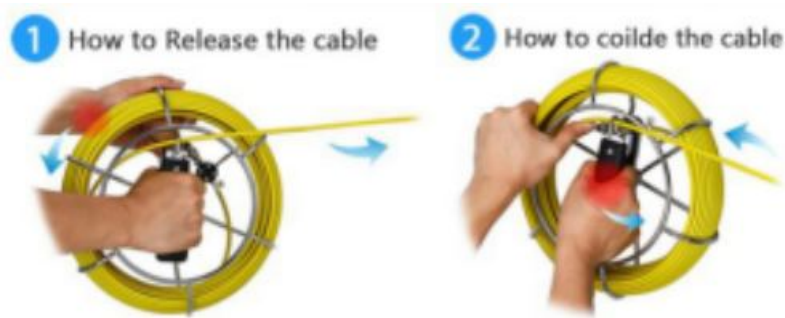


Pic 2



Pic 3

**How to Release & Coiled Cable**



Note: Please do not bend the cable 90 degrees



(Note : Keep the cable inside the hook of the pushrod while operating)

## Specifications

Image Sensor — CMOS  
 LCD Screen Type — 7" TFT LCD  
 Pixels — 1 000TVL  
 Horizontal Viewing Angle — 92 degrees  
 Vertical Viewing Angle — 92 degrees  
 Camera Head Diameter— 23mm  
 Waterproof Rating — IP68  
 Power Supply — 12V DC  
 Consumption Current {Max.} — 1000mA  
 System Operating Temp. — -20°C ~ 120°C  
 Operating Humidity {Disp.} — 15 ~85%RH  
 Certification — CE FCC RoHS

For any assistance, please feel free to contact us at:

[support@hbudsshop.com](mailto:support@hbudsshop.com)

We also sell replacement parts for any issues with the inspection camera. We will do our best to help solve any issue .

Thank you !

## Documents / Resources



**[Testrix Inspection Camera System](#)** [pdf] User Manual  
Inspection Camera System