



TESmart HDK0402A1U DisplayPort HDMI KVM Switch Instructions

[Home](#) » [TESmart](#) » TESmart HDK0402A1U DisplayPort HDMI KVM Switch Instructions 

Contents

- 1 TESmart HDK0402A1U DisplayPort HDMI KVM Switch Instructions
- 2 HotKey Switching Issues
- 3 Hotkeys for Dual Monitor KVM
- 4 Applicable product models for hotkeys
- 5 Keyboard/Mouse Issues
- 6 1. Video Signal Issues
- 7 3.1.3 Some Suggestions for Troubleshooting
- 8 That means this monitor is malfunctioning.
- 9 Go to STEP 2.
- 10 That means the cable of this monitor is malfunctioning.
- 11 4. Audio Issues
- 12 5. Refresh Rates/ Resolution Issues
- 13 Read More About This Manual & Download PDF:
- 14 Documents / Resources
 - 14.1 References

TESmart HDK0402A1U DisplayPort HDMI KVM Switch Instructions



[HotKey Switching Issues](#)

Hotkeys not working / Hotkey Issues / No Scroll Lock on keyboard / Loud Beep

[Hotkeys for Dual Monitor KVM](#)

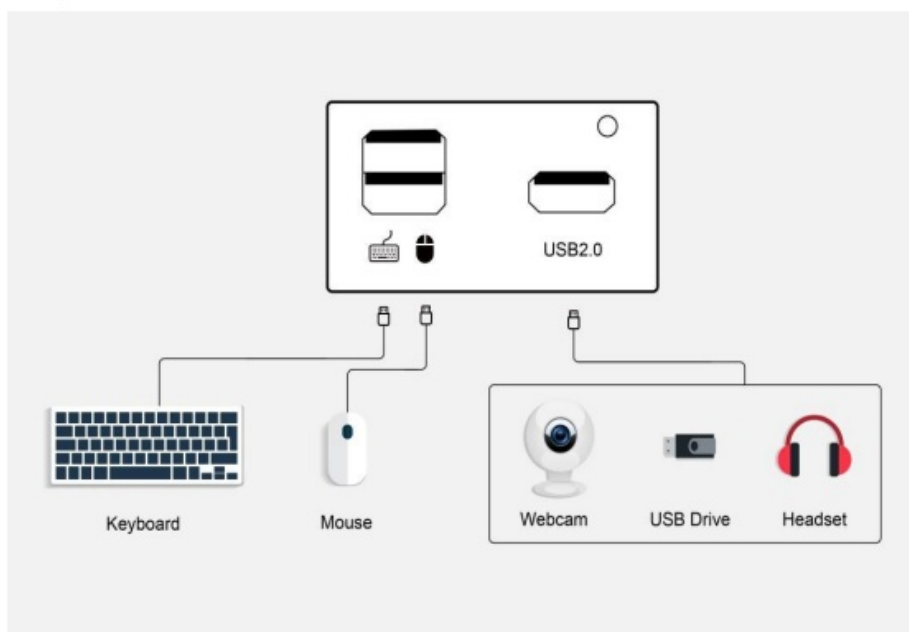
hotkey commands / hotkey setup / hotkey commands don't work / my keyboard have no Scroll Lock button / Passthrough Mode

Applicable product models for hotkeys

HDK0402A1U

Basic info

Keyboard must be plugged into dedicated Keyboard/Mouse port for hotkeys to be recognized.



KVM Mode 1: Extended Desktop



KVM Mode 2: Split Desktop



Hotkey commands:



Switch inputs (mode 1)



PC1 left monitor, PC2 right monitor (Mode 2)



PC2 left monitor, PC1 right monitor (Mode 2)



Change PC that controls Mouse/Keyboard



Enable or disable beep (Silent mode)



KVM Mode 2: Split Desktop

Troubleshooting / FAQ

Change hotkey trigger between Scroll Lock to Right-Ctrl
My hotkey commands don't work or stopped working

- Make sure keyboard is plugged into dedicated mouse/keyboard ports
- Try using Scroll Lock as hotkey trigger, if not, then Right-Ctrl. My keyboard does not have a Scroll Lock button
- Use Right-Ctrl, Right-Ctrl, 1 or 2 to confirm trigger isn't already set to Scroll Lock .
- Press and hold yellow switch button for 15 seconds . If KVM beeps, turn off and back Hotkey trigger will now be

set to Right-Ctrl.

Keyboard/Mouse Issues

Jumpy mouse / erratic behavior / repeating keys / multimedia keys not working / No mouse / No keyboard

We upgraded this KVM keyboard and mouse compatibility

The new generation passthrough mode is opened by default, which further expands the compatibility of keyboard and mouse and enhance user experience.

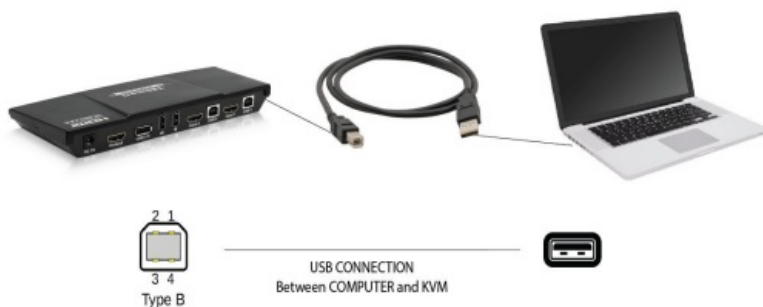
At this time, you can use more keyboard and mouse functions and special functions that are no supported by traditional KVM

Simplifies user operations

1. There is no need to turn passthrough mode on/off, so there will be no compatibility issues caused by accidentally turn passthrough mode
2. You no longer need to use the hot key to determine whether the mode is turned

- **My Mouse & Keyboard Are Not Working?**

First of all make sure you have the USB connection established



Once the connection is established you should have the “Online Light” on this indicates the connection is active this is what makes the communication between the peripherals(Mouse, keyboard, USB devices) and the computer

If you’re having erratic mouse behavior, dropouts, or repeating keys when connected to the dedicated mouse/keyboard ports, this could be because the dedicated mouse and keyboard ports have EDID programming. This emulation is what allows the switch to receive hotkeys and mouse gestures but conflicts with gaming peripherals and select mouse/keyboard brands.

- **Solution 1:** We see issues occur sometimes when there is Logitech or keyboard/mouse software (corsair,razer or etc.) installed into the computer. You can search your “Apps & Features” and uninstall this software. This should stop the conflation between the hotkey software and keyboard/mouse
- **Solution 2:** Another possible cause could be IR interference if you’re using wireless keyboard/mouse, since the USB port is in the back of the KVM there could be interference due to distance and the Using a USB extender to bring the USB dongle closer to the devices will strengthen the connection.

If that still doesn’t work we recommend using the USB 2.0 port with a powered USB hub as a workaround. Because the USB port does not have EDID emulation, keyboard hotkeys and mouse gesture switching are not available to devices that use the USB input.

1. [Video Signal Issues](#)

Blank Screen | No video | Monitor not working | Flashing/Blinking | Only one computer displays | Port # not working |

- [Only One Display Is Working](#)

Only One display is working | Display not working | One monitor working only

- If you have at least 1 video connection from each computer then using

the [Mode 2 feature \(each computer on each monitor\)](#) you can test the KVMs output to the monitors. Both displays should work when Mode 2 is active. This confirms the KVM output is working fine.

- If you have only one monitor working, it is likely either you're missing the second video connection or the dock/adaptor you're using is

Even if the adapter works when not connecting it to the KVM, it is possible that the adapter does not work well in the KVM environment.

3.1.3 Some Suggestions for Troubleshooting

All input devices need to plug **2 video cables** into KVM. All "Display 1" and "Display 2" means the screen printing of KVM.

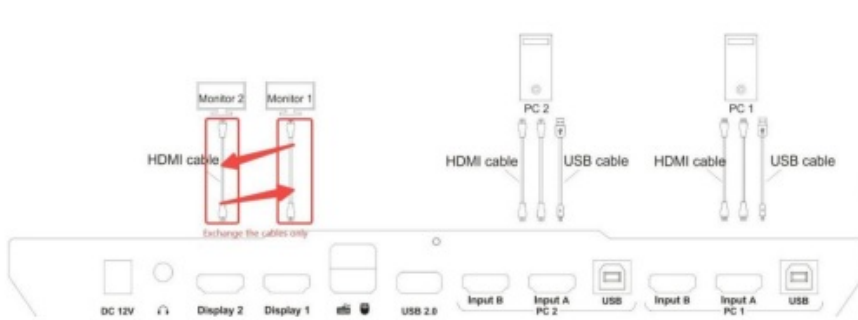
- **STEP1**—Keep the cables and KVM connection ports unchanged, and then exchange the monitor connect to Display 1 with that to Display 2, and check the working status of them after the
- The monitor that work properly before ——> still works properly The monitor that cannot work before ——> still cannot

That means this monitor is malfunctioning.

- The monitor that works properly before ——> cannot work

Go to STEP 2.

STEP2—Maintain the connection state completed in STEP 1 and do not change the position of the monitors and the ports. Exchange the connection cables(which connect the monitors and KVM), and observe the working status of the monitors now



- The monitor that cannot work before —> work properly

The monitor that works properly before —> cannot work anymore

That means the cable of this monitor is malfunctioning.

- The monitor that works properly before —> still works properly The monitor that cannot work before —> still cannot work **That means the KVM is**
Any other questions, please feel free to contact us.

- [Flashing Monitors/No Display](#)

Flashing Monitor | Snow screen | Blank Monitor|

The following are some common reasons that cause this situation

- **Bad Cable-** Its pretty rare but sometimes the video connection could fail. Try testing this connection directly to a monitor to confirm the connection works outside of the
- **Bad Port-** Either on the KVM or computer side. On the computer side, swap it with another computer if available. On the KVM test the failing port with another computer that is known to be working with the It the issue is

USB(keyboard/mouse) failure, make sure you have the Online Light on, this indicates that the USB connection is active.

- **Generic Adapter/Converters-** If you are using adapters/converters is the connection stream this is often a point of
- **Non-standard Resolution than the Other Working Monitor-** Try to change resolution for the problematic monitor to the same as the other working Its possible that the selected resolution is not supported by the KVM therefore this will result in a blank screen or flickering.
- **Docking Station Issues-**Its pretty rare to have incompatible docks but it does happen with some older docking stations for example the HP Ultralim Dock 2013
- **Monitor-**Make sure the monitor is set to the right input
- [Dual Monitor Display Troubleshooting](#)

Only One display is working | Display not working | One monitor working only

1. If you have at least 1 video connection from each computer then using the [Mode 2 feature \(each computer on each monitor\)](#) you can test the KVMs output to the Both displays should work when Mode 2 is active. This confirms the KVM output is working fine.
2. If you have only one monitor working, its likely either you're missing the second video connection or the dock/adaptor you're using is incompatible.

Even if the adapter works when not connecting it on the KVM, it is possible that the adapter does not work well in KVM environment.

3. If PC 1 works good with both monitors but PC 2 does not then you can swap PC 1 over PC 2 Inputs. If PC 1 works fine on both inputs this confirms the KVM is working fine and the issue is related to PC Could be the port, adapter or dock being used.

4. [Audio Issues](#)

My audio isn't working / speakers are not working / no audio

- [How Do I Get the Audio to Work?](#)

Your computer will transmit audio via the video connections, such as HDMI cables.

1. Please confirm what output interface is the computer equipped with? (DVI? HDMI?) If your computer is equipped with DVI output, normally that the DVI output does not carry audio signals, so the audio signal cannot be output to the
2. If you have an external device plugged into the audio mini-jack, the switch duplicates the audio signal from the HDMI input to the monitor and mini-jack After you connect the headset, you need to switch to the computer with the audio device turned on. Only the computer that controls the audio playback will output audio. Generally we just try all of the outputs one of them is correct.
3. If audio is not working, please go to your sound settings and choose the correct output device. This is typically listed as the monitor that is connected to the KVM because the audio is transmitting via the video connections. (Right-click the speaker, open the sound settings, select the correct HDMI output device, and set it as)


5. [Refresh Rates/ Resolution Issues](#)

Refresh Rate issues / Resolution is incorrect / Bad resolution We see refresh rate/resolution issues all the time when using adapters to connect to the KVM. Its important to remember the connection flows FROM the computer TO the KVM. For example if you need to convert a USB C connection, it would be USB C to HDMI Adapter. we are aware that not all adapters work well in a KVM environment.

A common issue we hear about is monitors not displaying the correct high refresh rate. This can be checked on the manual of your monitor it will demonstrate what refresh rates are supported via HDMI or Display port.

Read More About This Manual & Download PDF:

Documents / Resources

	<p>TESmart HDK0402A1U DisplayPort HDMI KVM Switch [pdf] Instructions HDK0402A1U, HDK0402A1U DisplayPort HDMI KVM Switch, DisplayPort HDMI KVM Switch, HDMI KVM Switch, KVM Switch, Switch</p>
---	---

References

- [User Manual](#)