

TESLOGIC

**Boost
Performance
Kit**



TESLOGIC Boost Performance Kit Instruction Manual

[Home](#) » [TESLOGIC](#) » TESLOGIC Boost Performance Kit Instruction Manual 

Contents

- [1 TESLOGIC Boost Performance Kit](#)
- [2 Installation](#)
- [3 Precautions](#)
- [4 Frequently Asked Questions](#)
- [5 Documents / Resources](#)
 - [5.1 References](#)

TESLOGIC

TESLOGIC Boost Performance Kit

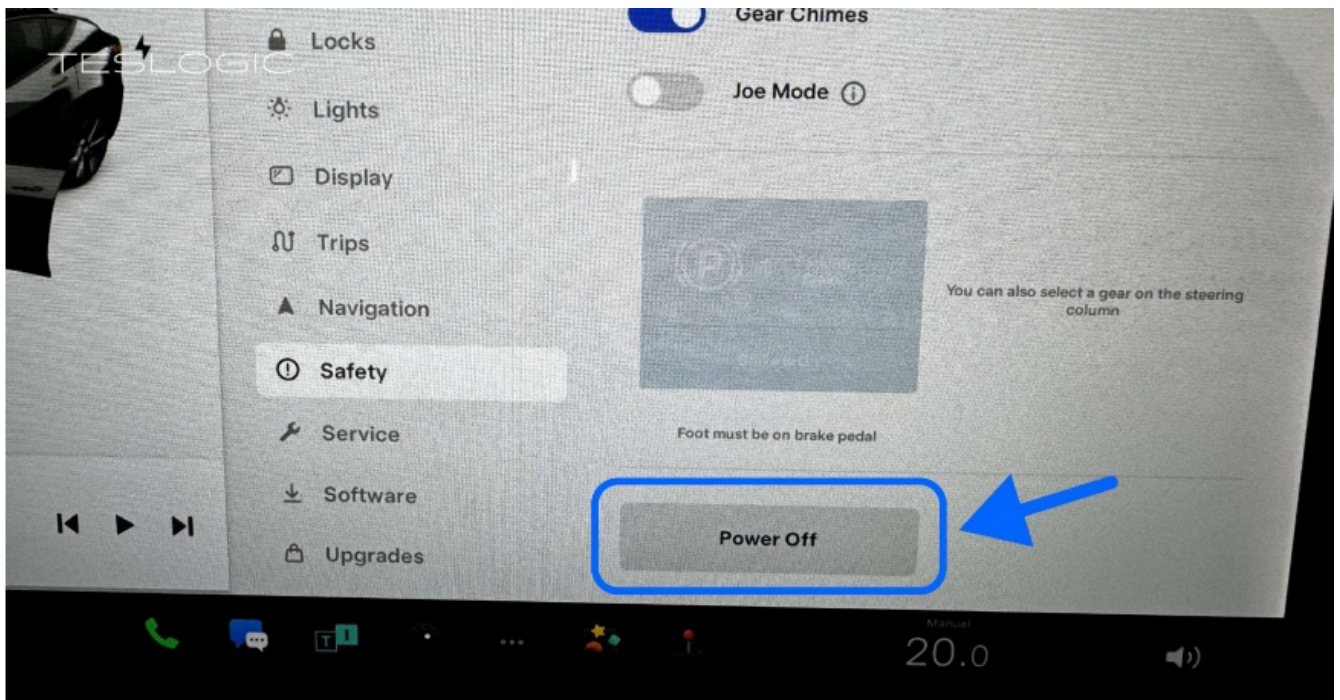


Installation

1. Move the passenger seat all the way back



2. Open the hood and the passenger door. Important! Do not close them until the installation is complete
3. Turn off the car's power in the safety menu



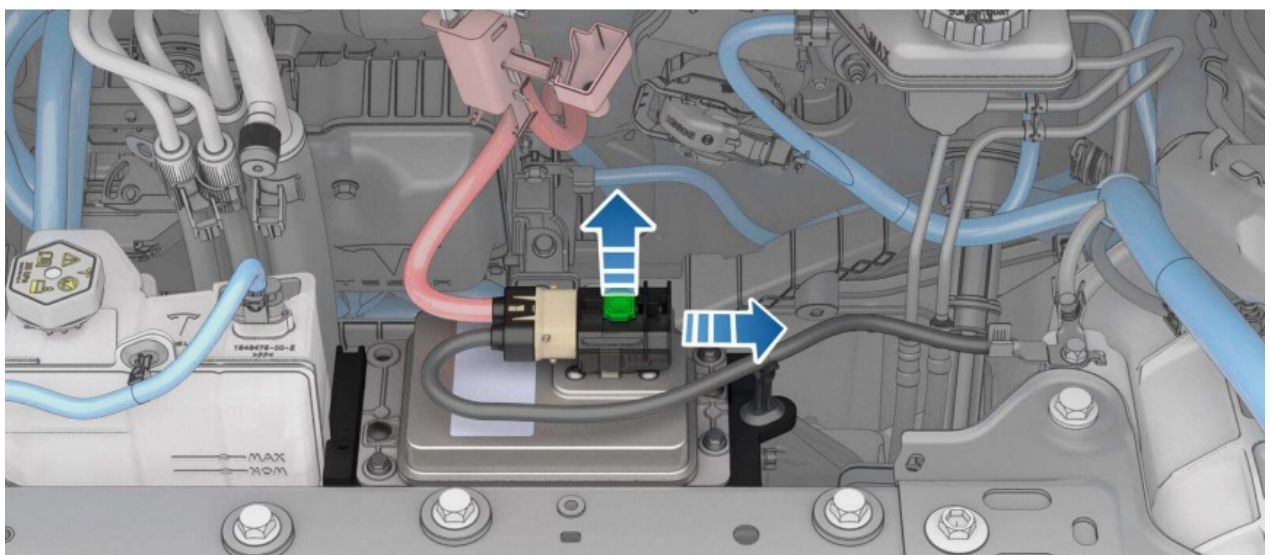
4. Power Disconnect.
 1. Remove the rear underhood apron. It is attached with clips.



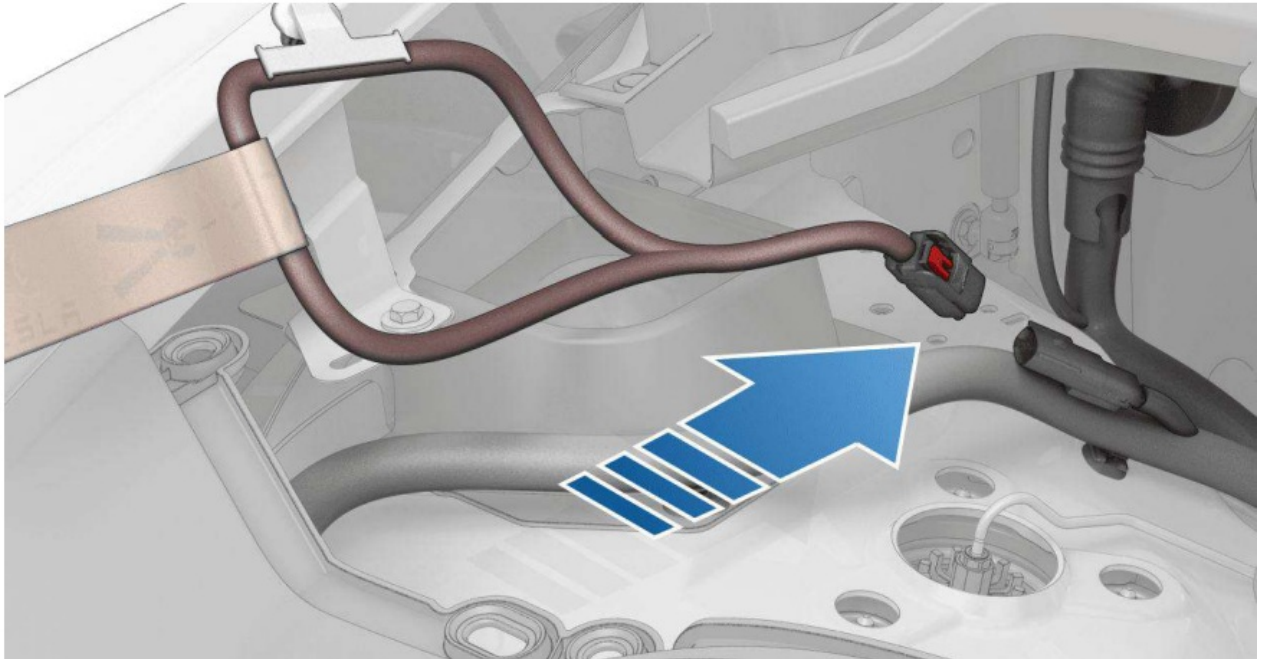
2. If the vehicle is equipped with HEPA filter, remove the HEPA filter assembly by removing two bolts that hold it.



3. Disconnect the LV battery connector from the LV battery: release the green locking tab, press the black connector (if applicable, on 16V battery), pull the black connector lock outwards to release the connector, and then pull up to disconnect the connector.



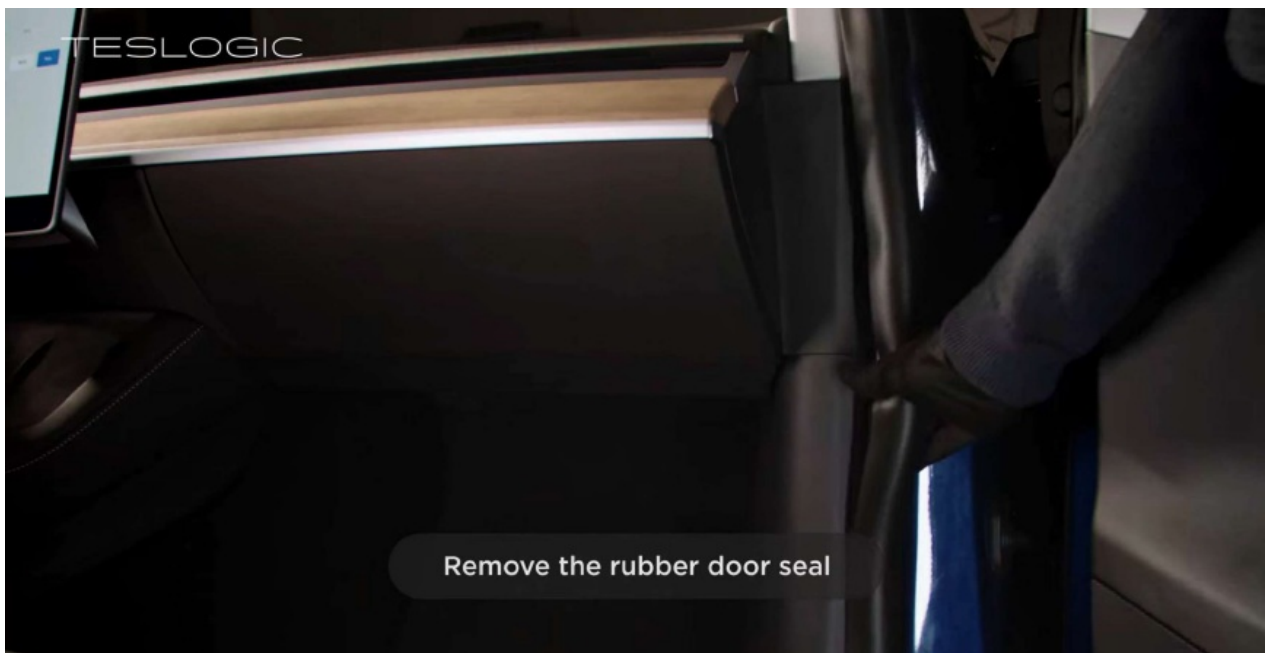
4. Locate the first responder loop near the top of the RH shock tower



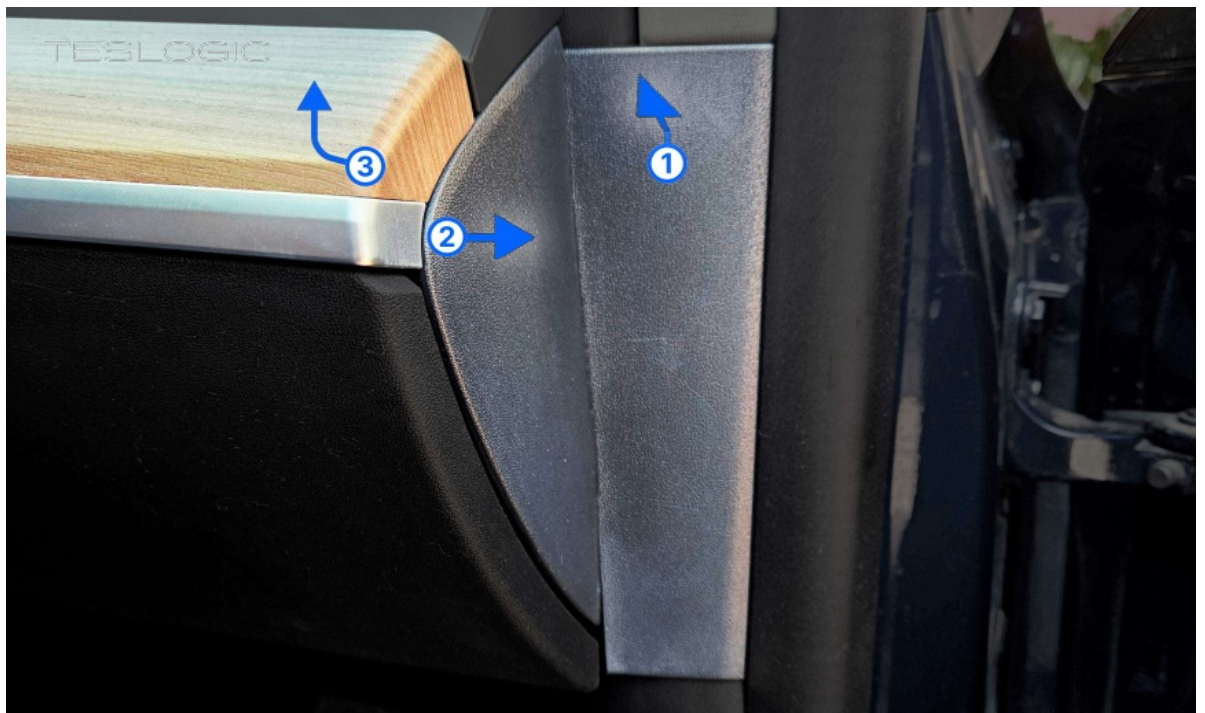
5. Slide the red locking tab back, press the black tab, and then disconnect the first responder loop.

5. Plastic Parts Disassembly.

1. Remove the rubber door seal.



2.
 1. Remove the rectangular plastic cover.
 2. Unclip the triangular side cap from the dashboard.
 3. Lift the wood-textured trim to access the screws underneath.



3. Using the tool provided, remove the piston.



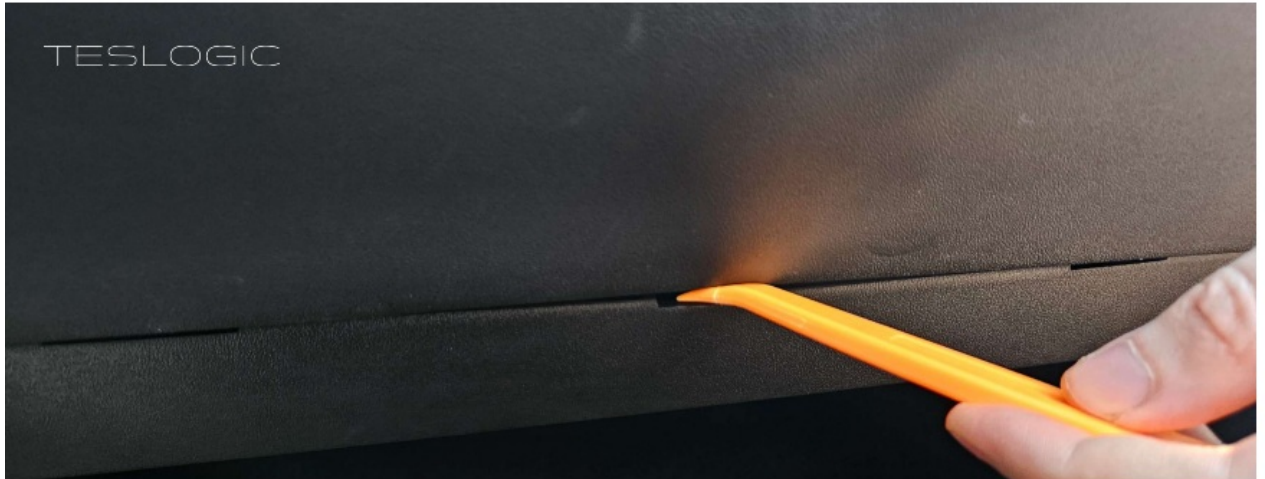
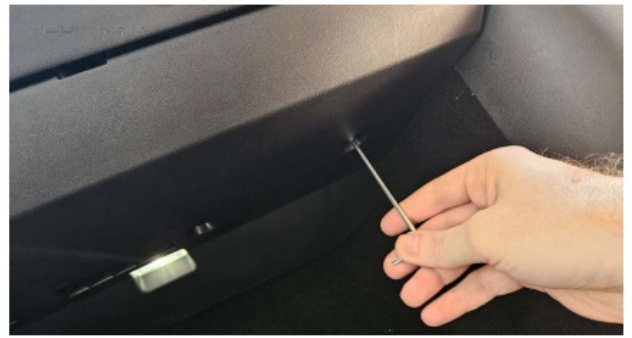
4. Remove the plastic door sill.



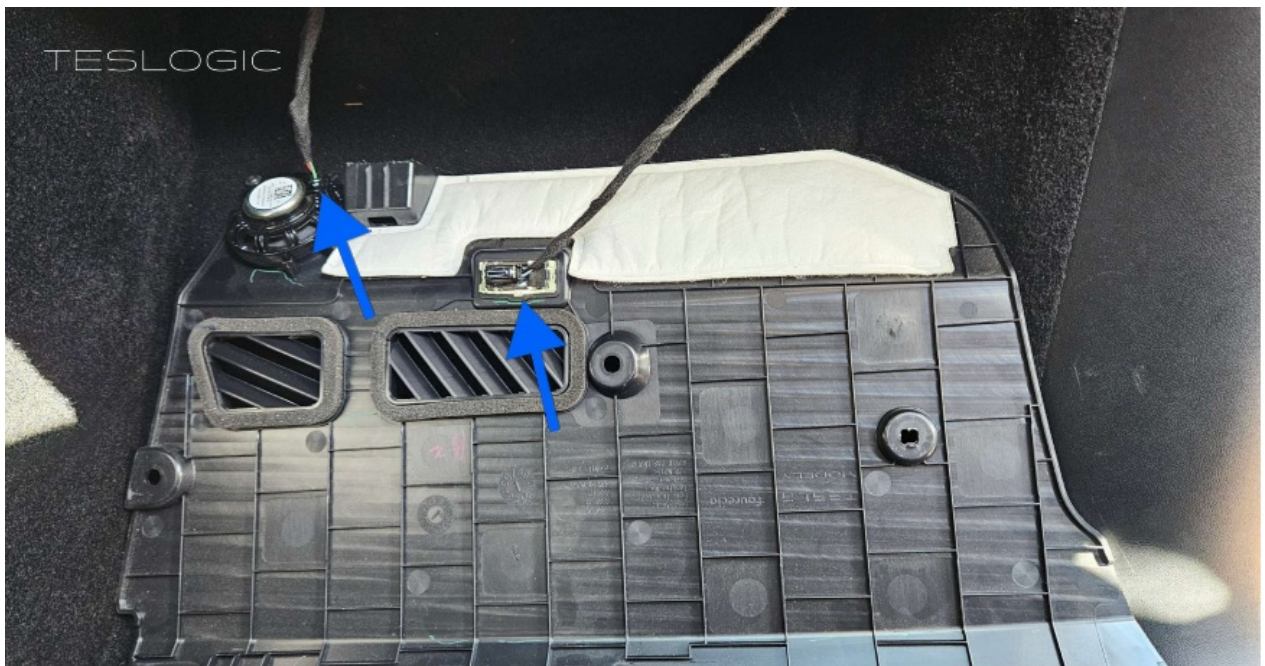
5. Removing Lower Plastic Cover for Model Y.

6. Remove the plastic cover located at the passenger's feet, under the glove compartment. To do this, use the supplied tool to unclip 2 clips and 1 bolt.





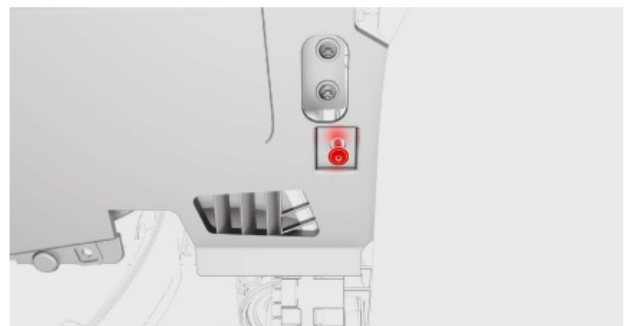
7. Disconnect the speaker and the light on this cover



6. Removing Lower Airbag.

If your package includes a lower airbag, remove it.

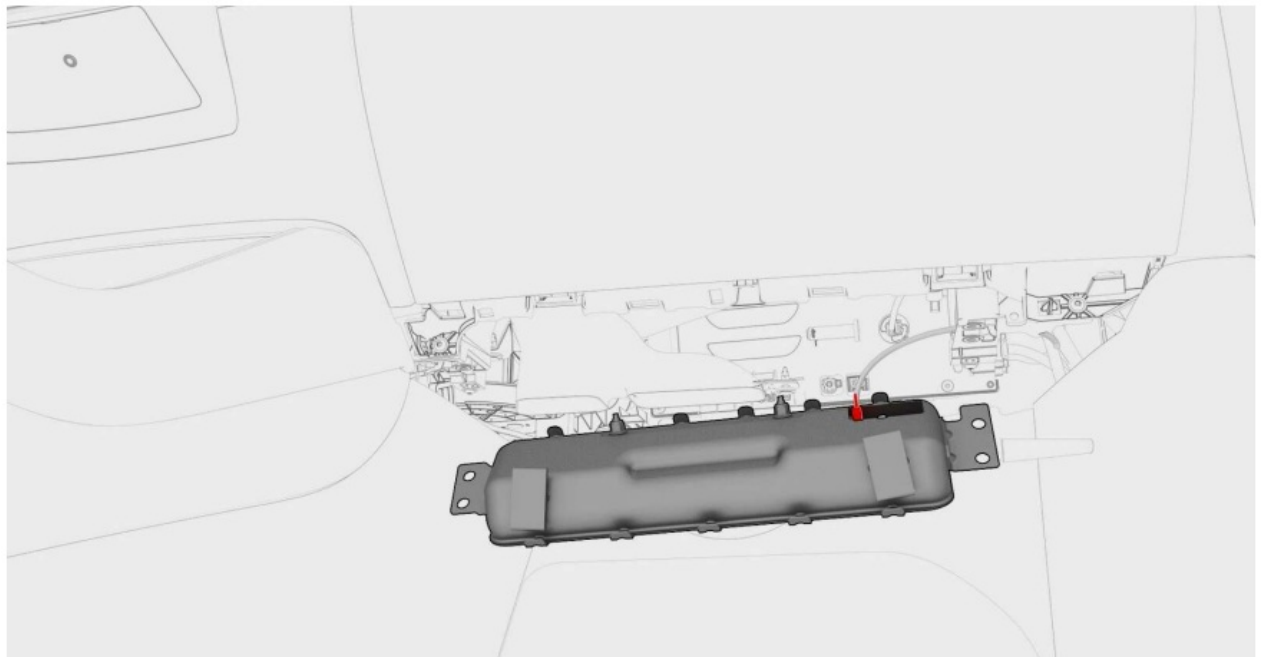
1. Remove the bolts (x2) that attach the front passenger knee airbag to the instrument panel.



2. While supporting the front passenger knee airbag, remove and discard the bolts (x4) that attach the front passenger knee airbag to the instrument panel.

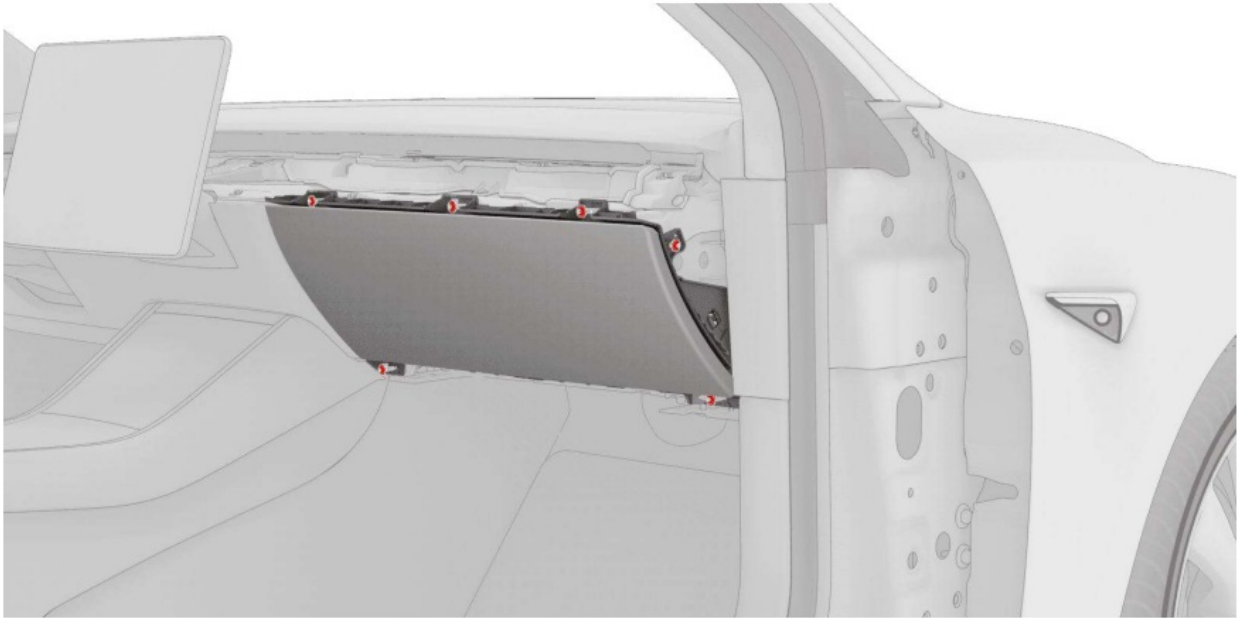


3. Disconnect the electrical connector from the front passenger knee airbag

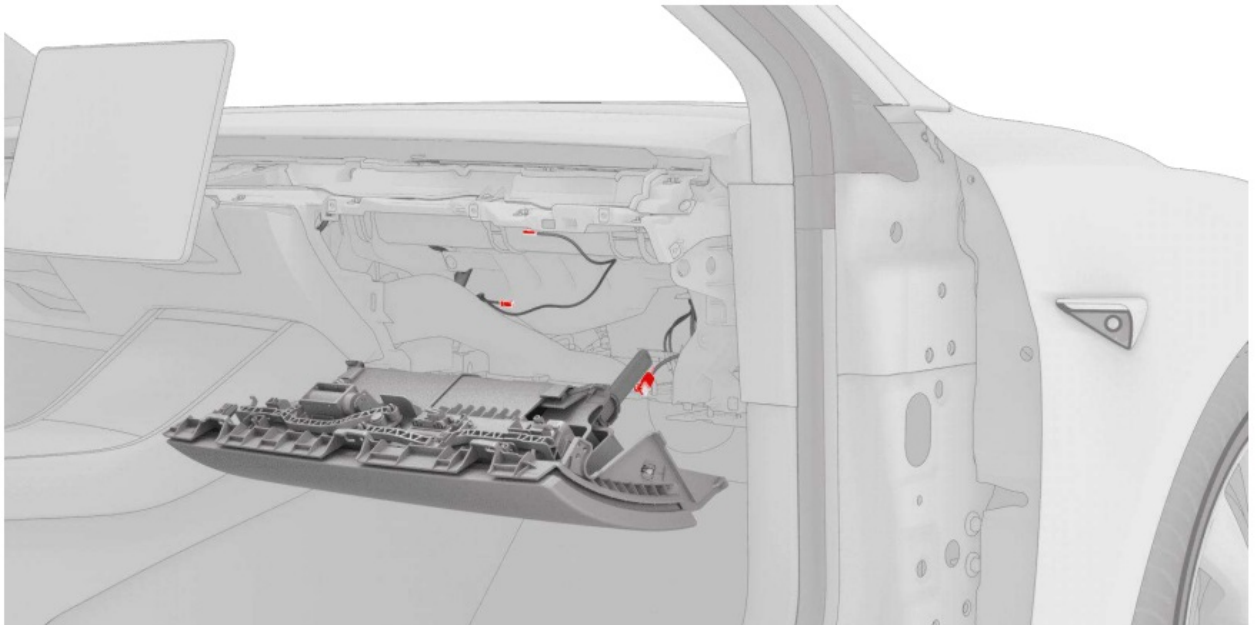


7. . Removing The Glove Compartment.

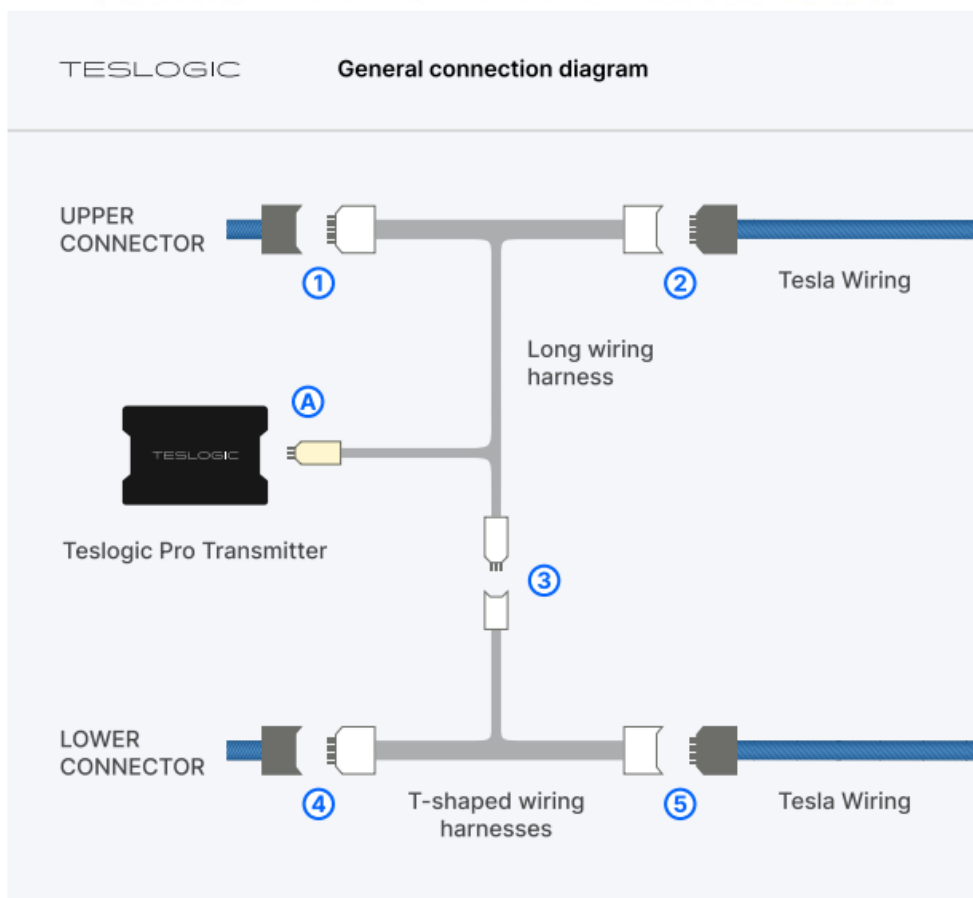
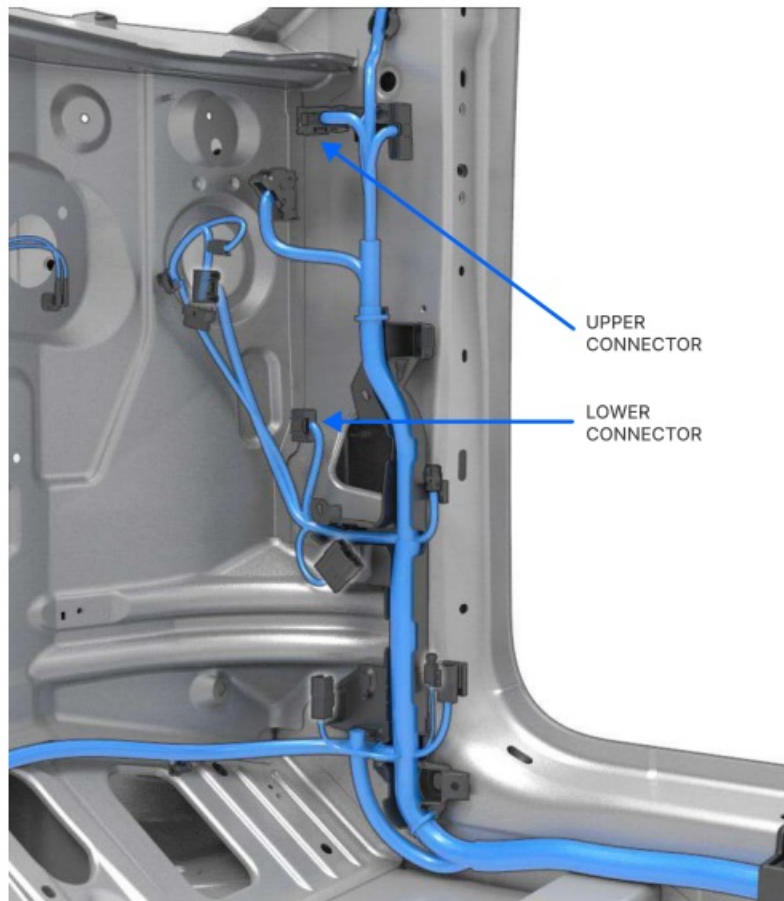
1. Remove the screws (x6) that attach the glove box to the IP carrier.



2. Disconnect the electrical harness from the glove box solenoid connector, the damper connector, and the puddle light connector.

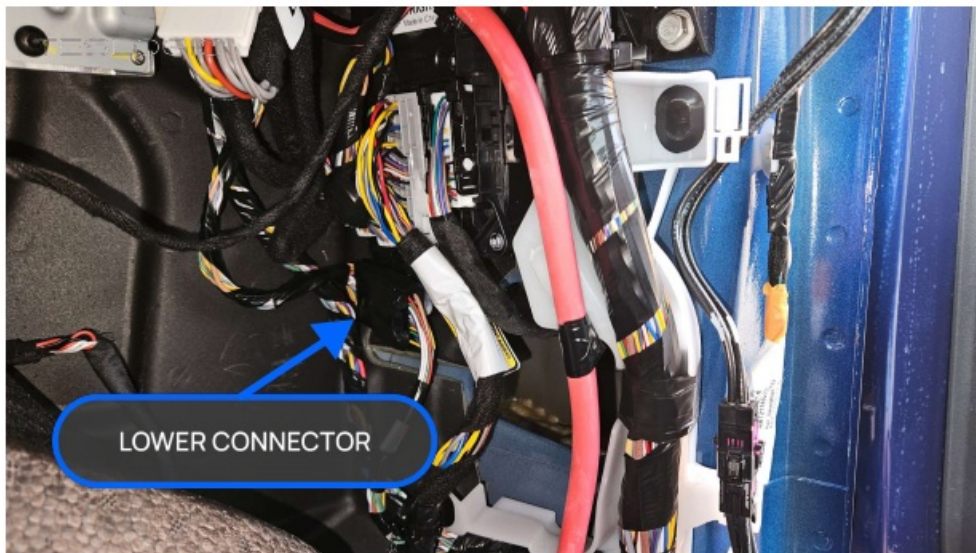


3. Remove the glove box from the vehicle.
8. General connection diagram.

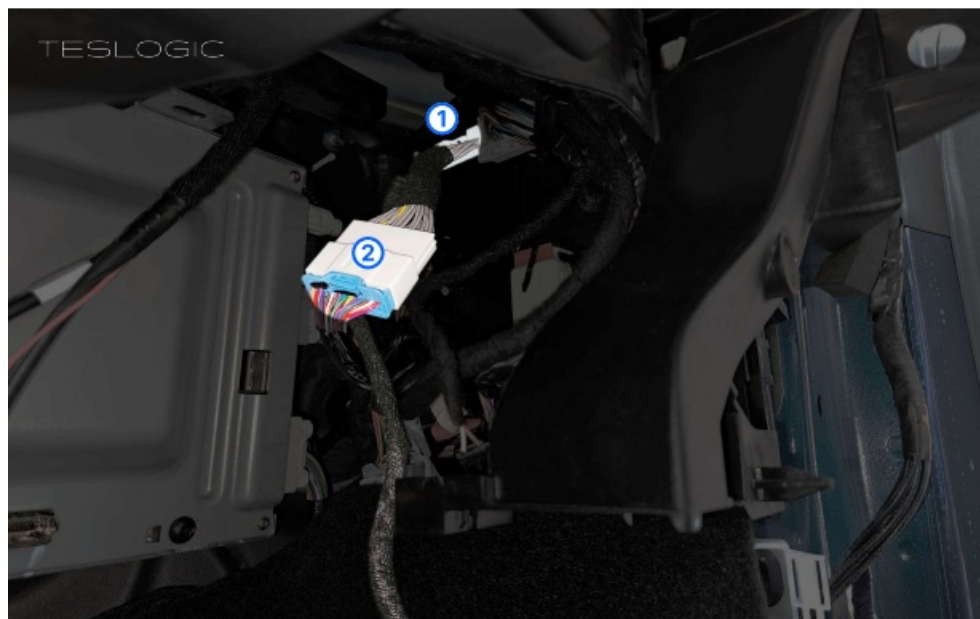


9. Teslogic Pro Device Connection

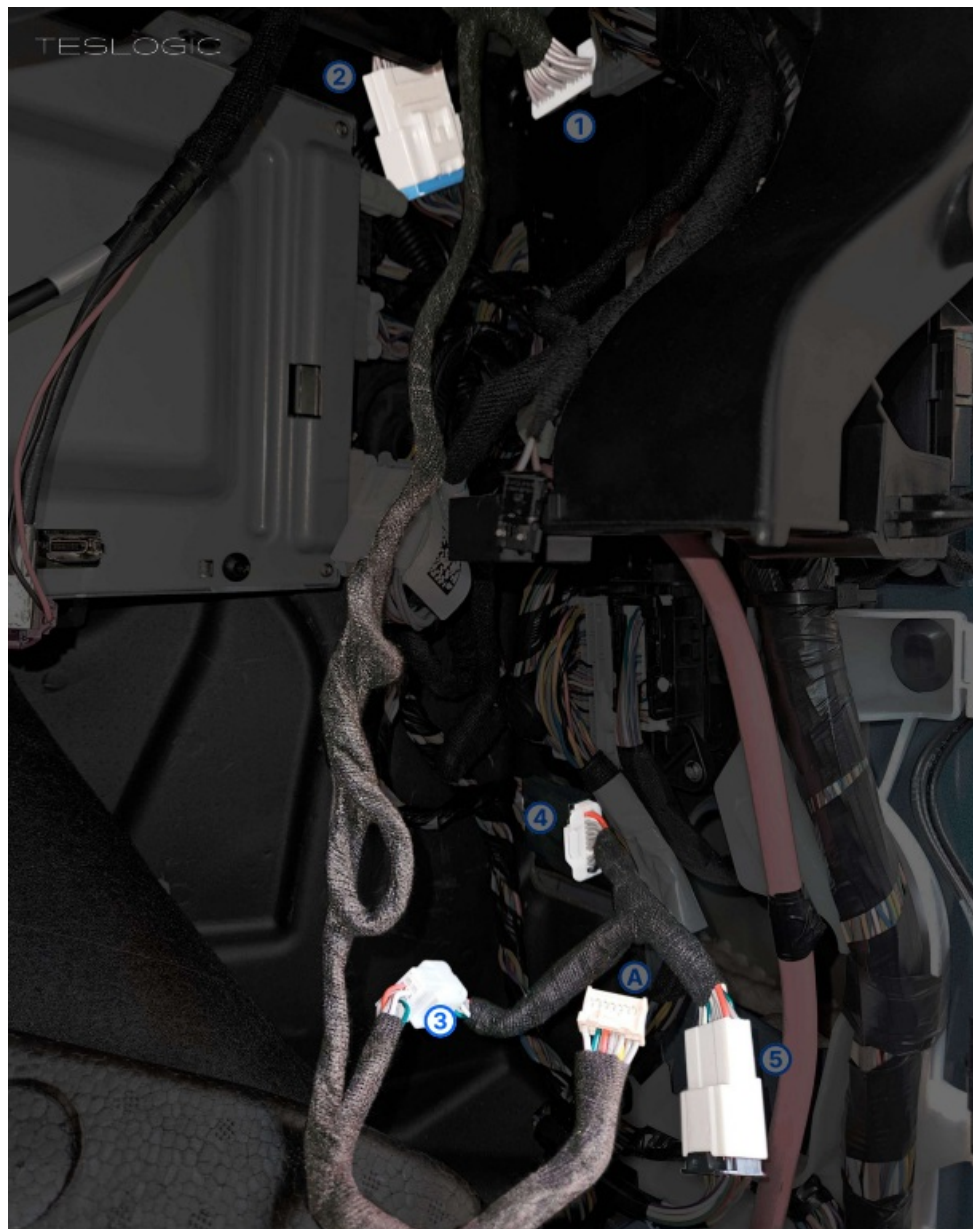
1. Disconnect the plug from the lower connector. Connect it to the short T-shaped wiring, and then connect the T-shaped wiring to the lower connector. The kit includes 2 T-shaped wiring harnesses – one for Model 3 and one for Model Y. The wiring for Model Y can be identified by an additional grounding wire (which only needs to be connected if you have HW 4.0).



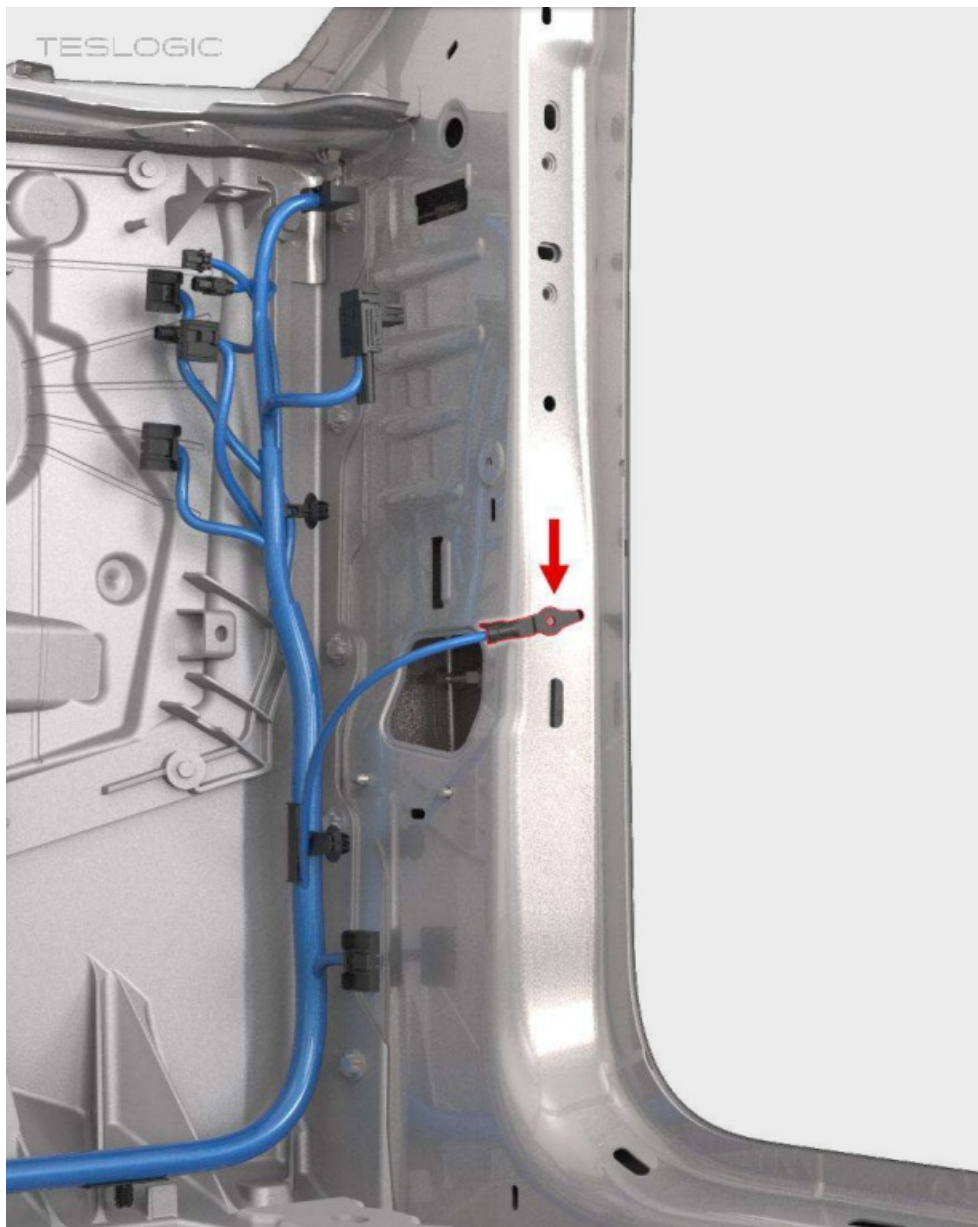
2. Disconnect the plug from the upper connector, connect it to the long wiring harness, and then connect the long wiring harness to the upper connector.



3. Connect the upper and lower wiring harnesses by attaching the corresponding plugs.



4. If you have HW 4.0, you also need to connect the ground wire labeled "HW 4.0" on the short T-shaped Wiring by placing the ring onto the ground screw, shown in the diagram.



5. Connect the free plug into Teslogic Pro device.



6. Place Teslogic Pro device in the recess below.



10. Reassemble everything. Don't forget to connect all 3 connectors on the glove compartment.

11. Connect the disconnect switch under the hood, then the negative terminal of the 12v battery.

12. Install the plastic battery cover.

13. If you also want to use your phone as a dashboard, attach the supplied phone holder to the steering column (using double-sided tape on the casing) and attach to it a magnetic disk for the phone (with the Teslogic logo).

Precautions

There is a possibility that future Tesla software updates may cause some Teslogic Pro functions to be disabled. Teslogic will release updates to our application to address this. The Drift mode and Track mode functions should only be used off public roads.

IMPACT ON THE Tesla WARRANTY


When Teslogic Pro is installed, you may encounter a denial of warranty service for your vehicle, so before making a warranty claim, we recommend uninstalling Teslogic Pro. Teslogic is not liable for any warranty service denial or any issues arising during the warranty service of your Tesla vehicle.

Teslogic Inc. 2093 Philadelphia Pike #3248 Claymont, DE 19703 info@teslogic.co

Frequently Asked Questions

- **Q: Will installing the Teslogic PRO BOOST/PERFORMANCE Kit void my Tesla warranty?**
 - A: Any modifications to your Tesla vehicle may impact your warranty. It is recommended to consult with Tesla or a certified service center before installation.
- **Q: Do I need specialized tools for installation?**
 - A: The product comes with the required tools for installation. However, if you are unsure, it is advisable to seek professional assistance.

Documents / Resources

	<p>TESLOGIC Boost Performance Kit [pdf] Instruction Manual Boost Performance Kit, Performance Kit</p>
---	---

References

- [User Manual](#)

[Manuals+](#), [Privacy Policy](#)

This website is an independent publication and is neither affiliated with nor endorsed by any of the trademark owners. The "Bluetooth®" word mark and logos are registered trademarks owned by Bluetooth SIG, Inc. The "Wi-Fi®" word mark and logos are registered trademarks owned by the Wi-Fi Alliance. Any use of these marks on this website does not imply any affiliation with or endorsement.