

# TESLA WF60832M Front Loading Washing Machines User Manual

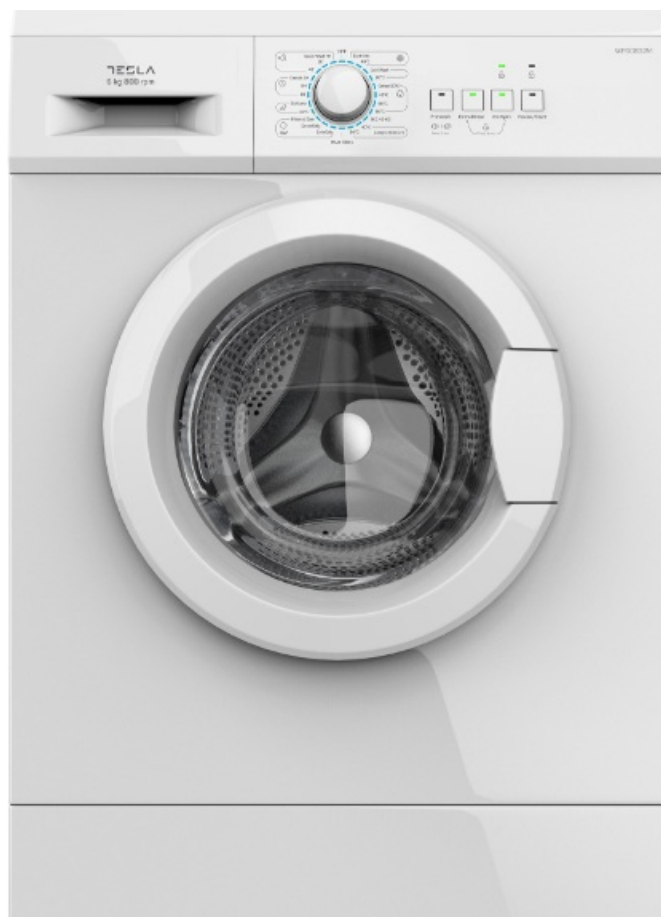
[Home](#) » [Tesla](#) » TESLA WF60832M Front Loading Washing Machines User Manual 

## Contents

- 1 TESLA WF60832M Front Loading Washing Machines
- 2 Product Information
- 3 Product Usage Instructions
  - 3.1 Unpacking the Washing Machine
  - 3.2 Removing Transport Bolts
  - 3.3 Levelling the Washing Machine
- 4 SAFETY INSTRUCTIONS
- 5 INSTALLATION
  - 5.1 Product Description
- 6 OPERATIONS
  - 6.1 Before Each Washing
  - 6.2 Control Panel
  - 6.3 Option
  - 6.4 Other Functions
  - 6.5 Washing Programs Table
- 7 MAINTENANCES
  - 7.1 Cleaning and Care
- 8 Troubleshooting
- 9 Technical Specifications
- 10 Product information sheet
  - 10.1 Model: WF60832M
  - 10.2 Model: WF61033M
  - 10.3 Model: WF61063M
- 11 EU DECLARATION OF CONFORMITY
- 12 Documents / Resources
  - 12.1 References
- 13 Related Posts



## TESLA WF60832M Front Loading Washing Machines



### Product Information

The product is a washing machine available in three models: WF60832M, WF61033M, and WF61063M. Product images shown in the manual are for illustrative purposes only and may differ from the actual product. The manual provides safety instructions to minimize the risk of fire or explosion, electric shock, property damage, personal injury, or loss of life.

There are three symbols used in the manual to indicate different levels of danger: WARNING (potentially dangerous situation resulting in death or serious injuries), CAUTION (potentially dangerous situation resulting in slight or minor injuries or damage to property and the environment), and NOTE (potentially dangerous situation resulting in slight or minor injuries).

The manual also includes information on responsible disposal of the product to prevent harm to the environment and human health.

The installation section provides details on the product description, including various components such as the water supply hose, detergent dispenser, top cover, control panel, power supply cord, drum, door, drain hose, service filter, and accessories.

### Product Usage Instructions

#### Unpacking the Washing Machine

1. Remove the cardboard box and styrofoam packing.
2. Lift the washing machine and remove the base packing. Ensure the small triangle foam is removed along with the bottom one. If not, lay the unit down with the side surface and manually remove the small foam from the unit bottom.
3. Remove the tape securing the power supply cord and drain hose.
4. Remove the inlet hose from the drum.

## Removing Transport Bolts

1. Loosen the 4 bolts with a spanner and then remove them.
2. Stop the holes with transport hole plugs.
3. Keep the transport bolts properly for future use.

## Levelling the Washing Machine

1. Check if the legs are closely attached to the cabinet. If not, turn them to their original positions and tighten the nuts.
2. Loosen the lock nut and turn the feet until they closely contact the floor.
3. Adjust the legs and lock them with a spanner to ensure the machine is steady.

## SAFETY INSTRUCTIONS

For your safety, the information in this manual must be followed to minimize the risk of fire or explosion, electric shock, or to prevent property damage, personal injury or loss of life.

### Explanation of the symbols:

#### **WARNING!**

This combination of symbol and signal word indicates a potentially dangerous situation which may result in death or serious injuries unless it's avoided.

#### **CAUTION!**

This combination of symbol and signal word indicates a potentially dangerous situation which may result in slight or minor injuries or damage to property and the environment.

#### **NOTE**

This combination of symbol and signal word indicates a potentially dangerous situation which may result in slight or minor injuries.

#### **WARNING!**

#### **The electric shock!**

- If the supply cord is damaged, it must be replaced by the manufacturer, its service agent or similarly qualified persons in order to avoid a hazard.
- The new hose-sets supplied with the appliance are to be used and that old hose-sets should not be reused.
- Before any maintenance the device, unplug the appliance from the mains.
- Always unplug the machine and turn off the water supply after use. The max. inlet water pressure, in pascals.  
The min. inlet water pressure, in pascals.
- To ensure your safety, power plug must be inserted into an earthed three-pole socket. Check carefully and make sure that your socket is properly and reliably earthed.
- Make sure that the water and electrical devices must be connected by a qualified technician in accordance with the manufacturer's instructions and local safety regulations.

#### **Risk to children!**

- **EN countries:** the appliance can be used by children aged from 8 years and above and persons with reduced physical, sensory or mental capabilities or lack of experience and knowledge if they have been given supervision or instruction concerning use of the appliance in a safe way and understand the hazards involved. Children shall not play with the appliance. Cleaning and user maintenance shall not be made by children without supervision.
- Children of less than 3 years should be supervised to ensure that they do not play with appliance.
- Animals and children may climb into the machine. Check the machine before every operation.
- Kids should be supervised that they do not play with the appliance.

- Glass door may be very hot during the operation. Keep kids and pets far away from the machine during the operation very wet rooms as well as in the rooms with explosive or caustic gas.
- Remove all packages and transport bolts before using the appliance. Otherwise, serious damage may result.
- Plug must be accessible after installation.

### **Risk of explosion!**

- Do not wash or dry articles that have been cleaned in, washed in, soaked in, or dabbed with combustible or explosive substances( such as wax, oil, paint, gasoline, degreasers, dry-cleaning solvents, kerosene, etc.) This may result in fire or explosion.
- Before hand thoroughly rinse items of washing by hand.

### **CAUTION!**

#### **Installing the product!**

- This washing machine is for indoor use only.
- It isn't intended to be built-in using.
- The openings must not be obstructed by a carpet.
- Washing machine shall not be installed in bath room or very wet rooms as well as in the rooms with explosive or caustic gases.
- The washing machine with single inlet valve only can be connected to the cold water supply. The product with double inlet valves should be correctly connected to the hot water and cold water supply.
- Plug must be accessible after installation.
- Remove all packages and transport bolts before using the appliance. Otherwise, serious damage may result.

### **Risk of damaging appliance!**

- Your product is only for home use and is only designed for the textiles suitable for machine washing.
- Do not climb up and sit on top cover of the machine.
- Do not lean against machine door.
- Cautions during Handling Machine:
  - Transport bolts shall be reinstalled to the machine by a specialized person.
  - The accumulated water shall be drained out of the machine.
  - Handle the machine carefully. Never hold each protruded part on the machine while lifting. Machine door can not be used as the handle during the conveyance.
  - This appliance is heavy. Transport with care.
- Please do not close the door with excessive forces. If it is found difficult to close the door, please check if the clothes are put in or distributed well.
- It is forbidden to wash carpets.

### **Operating the appliance!**

- Before washing the clothes at first time, the product shall be operated in one round of the whole procedures without the clothes inside.
- Flammable and explosive or toxic solvents are forbidden. Gasoline and alcohol etc. Shall not be used as detergents. Please only select the detergents suitable for machine washing, especially for drum.
- Make sure that all pockets are emptied. Sharp and rigid items such as coin, brooch, nail, screw or stone etc. may cause serious damages to this machine.

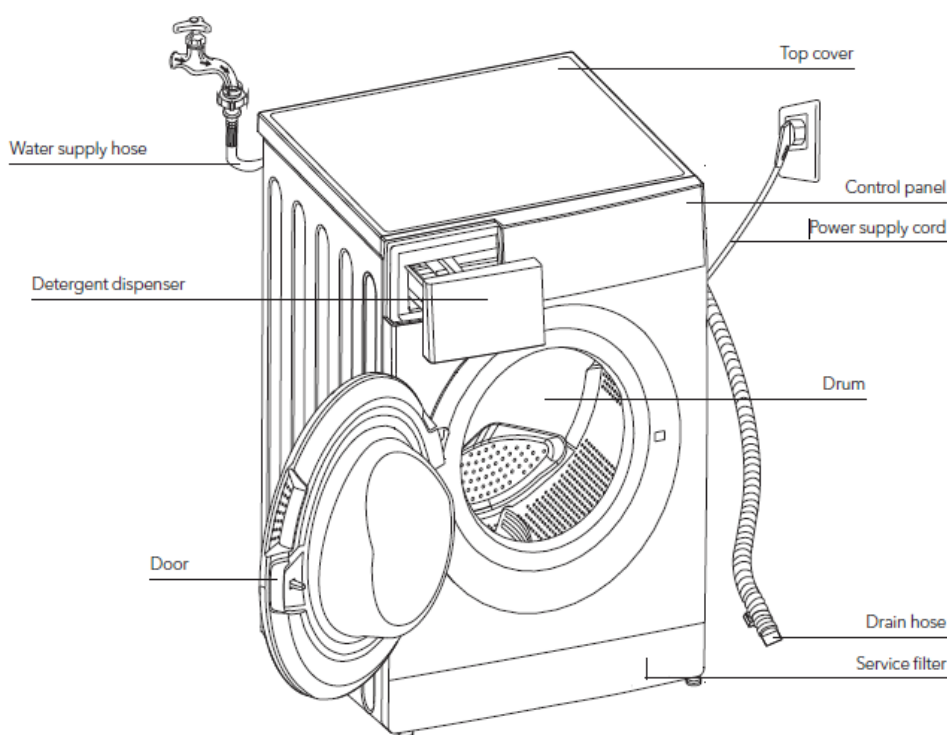
- Please check whether the water inside the drum has been drained before opening its door. Please do not open the door if there is any water visible.
- Be careful of burning when the product drains hot washing water.
- Never refill the water by hand during washing.
- After the program is completed, please wait for two minutes to open the door.

### Packaging/Old appliance

This marking indicates that this product should not be disposed with other household wastes throughout the EU. To prevent possible harm to the environment or human health from uncontrolled waste disposal, recycle it responsibly to promote the sustainable reuse of material resources. To return your used device, please use the collection systems or contact the retailer where the product was purchased. They return and can take this product for environmental safe recycling.

## INSTALLATION

### Product Description



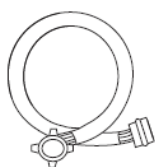
### NOTE

The product line chart is for reference only, please refer to real product as standard.

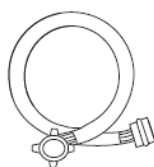
### Accessories



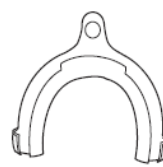
Transport hole plug



Supply hose cold water



Supply hose hot water (optional)

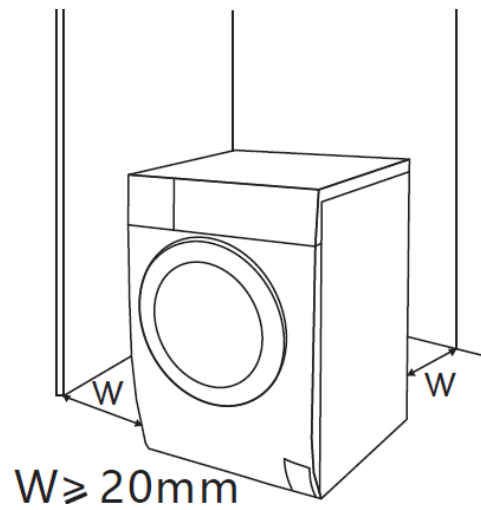


Drain hose support (optional)



Owner's manual

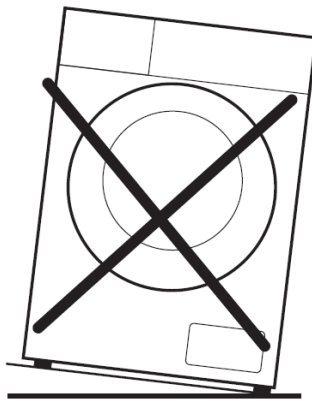
### Installation area



### **WARNING!**

- Stability is important to prevent the product from wandering!
- Make sure that the product should not stand on the power cord.

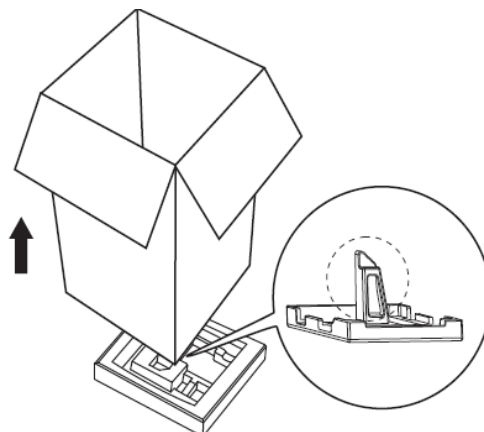
**Before installing the machine, the location characterized as follows shall be selected:**



1. Rigid, dry, and level surface
2. Avoid direct sunlight
3. Sufficient ventilation
4. Room temperature is above 0 °C
5. Keep far away from the heat resources such as coal or gas.

### **Unpacking the washing machine**

### **WARNING!**

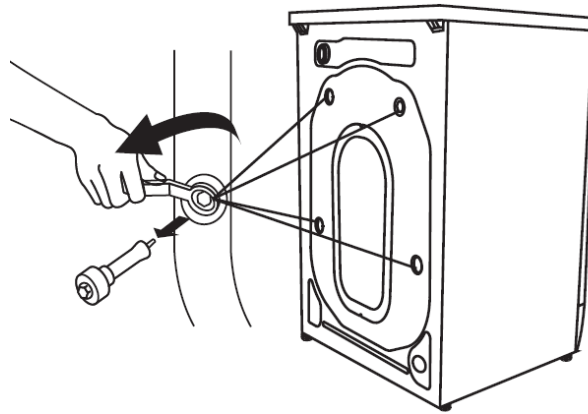


- Packaging material (e.g. Films, Styrofoam) can be dangerous for children.

- There is a risk of suffocation! Keep all packaging well away from children.
  - Remove the cardboard box and styrofoam packing.
  - Lift the washing machine and remove the base packing. Make sure the small triangle foam is removed with the bottom one together. If not, lay the unit down with side surface, then remove the small foam from the unit bottom manually.
  - Remove the tape securing the power supply cord and drain hose.
  - Remove the inlet hose from the drum.

### Remove transport bolts

#### WARNING!



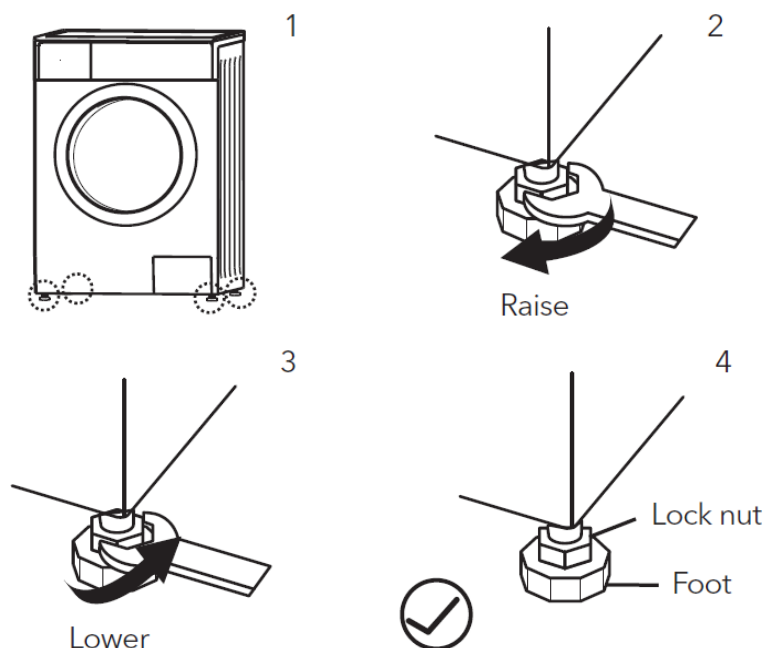
- You must remove the transport bolts from the backside before using the product.
- You'll need the transport bolts again if you move the product , so make sure you keep them in a safe place.

#### Please take the following steps to remove the bolts:

1. Loosen 4 bolts with spanner and then remove them.
2. Stop the holes with transport hole plugs.
3. Keep the transport bolts properly for future use.

### Levelling the washing machine

#### WARNING!



- The lock nuts on all four feet must be screwed tightly against the housing.

- Check if the legs are closely attached to the cabinet. If not, please turn them to their original positions tighten the nuts.
- Loosen the lock nut turn the feet until it closely contacts with the floor.
- Adjust the legs and lock them with a spanner, make sure the machine is steady.

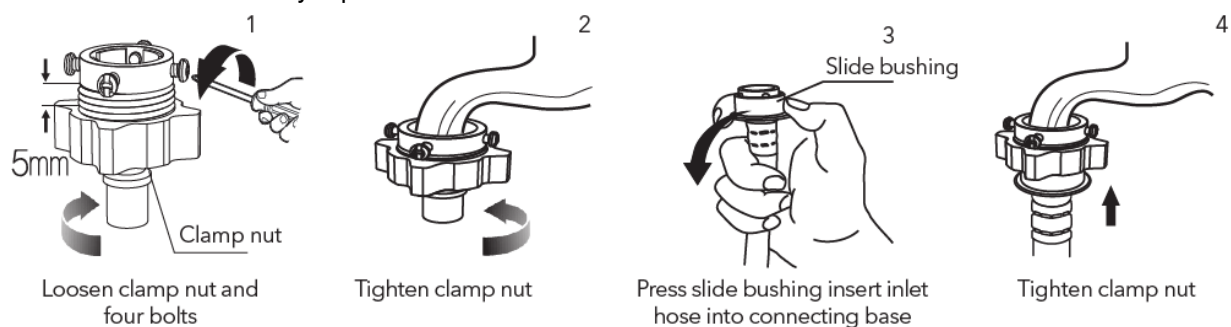
## Connect Water Supply Hose

### WARNING!

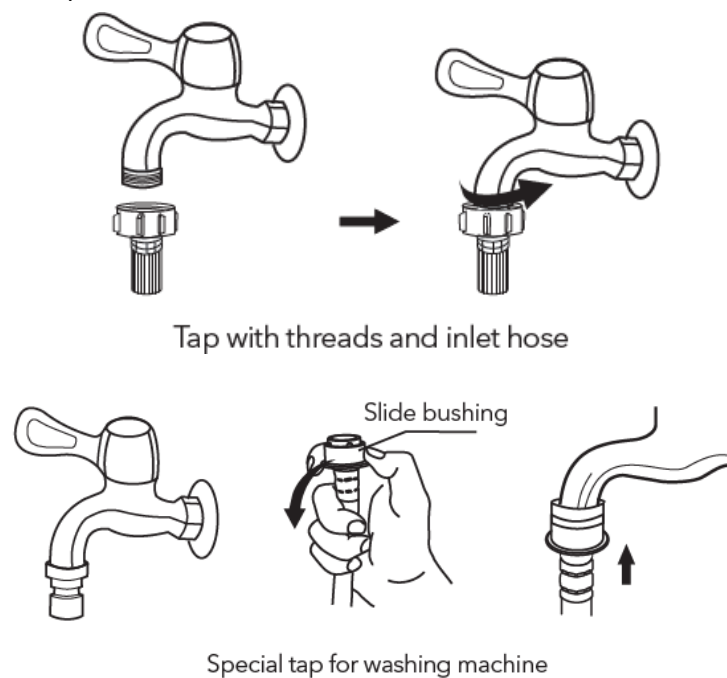
- To prevent leakage or water damage, follow the instructions in this chapter!
- Do not kink, crush, modify or sever water inlet hose.
- For the model equips hot valve, connect it to hot water tap with hot water supply hose. Energy consumption will decrease automatically for some program.

Connect the inlet pipe as indicated, There are two ways to connect the inlet pipe.

#### 1. Connection between ordinary tap and inlet hose.

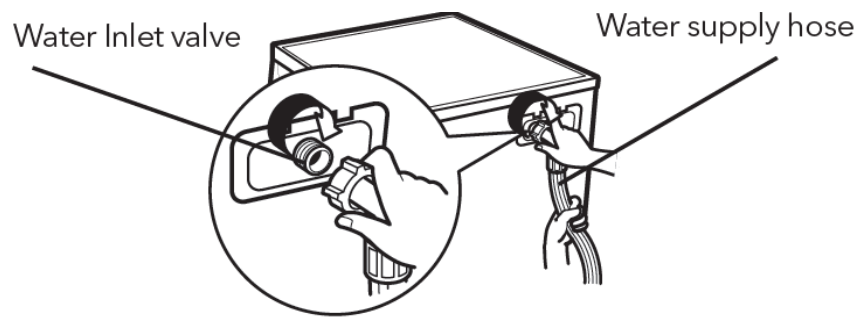


#### 2. Connection between screw tap and inlet hose.



Connect the other end of inlet pipe to the inlet valve at the backside of product and fasten the pipe tightly clockwise.





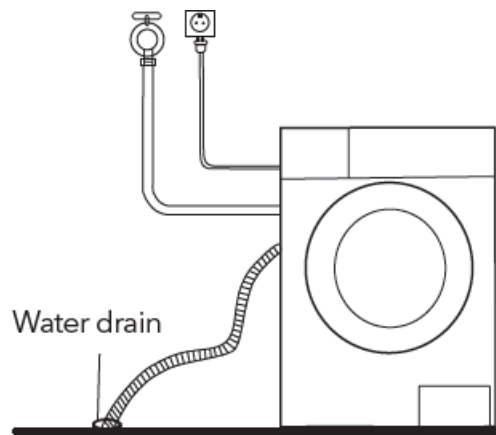
## Drain Hose

### WARNING!

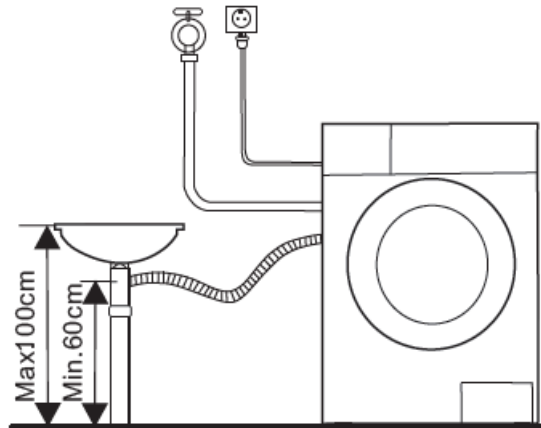
- Do not kink or protract the drain hose.
- Position drain hose properly ,otherwise damage might result of water leakage.

There are two ways to place the end of drain hose:

1. Put the hose into the water drain

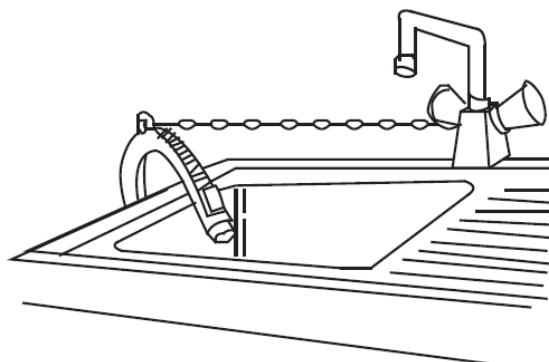


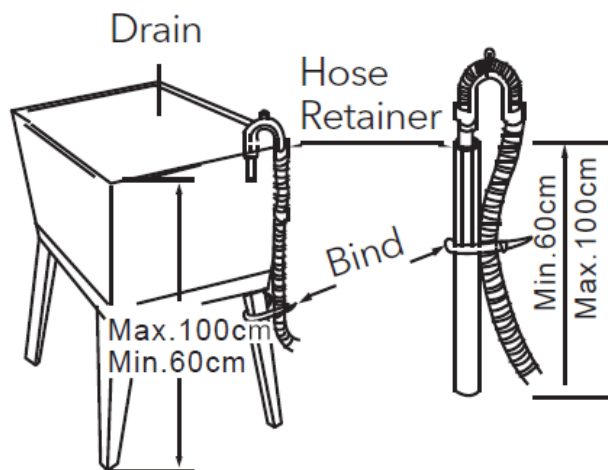
2. Connect it to a drain pipe.



### NOTE

If the machine has drain hose support, please install it like the following.





### WARNING!

When installing drain hose, fix it properly with a rope.

If drain hose is too long, do not force it into washing machine as it will cause abnormal noises.

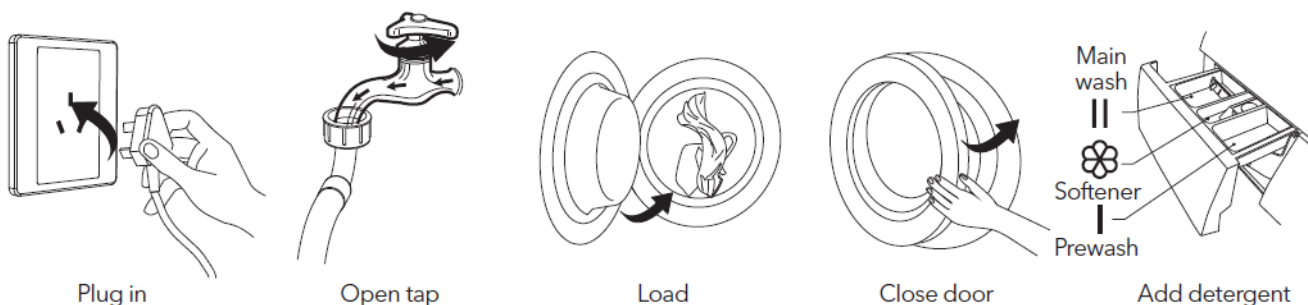
## OPERATIONS

### Quick Start

#### CAUTION!

- Before washing, please make sure it's installed properly.
- Before washing at first time, the washing machine shall be operated in one round of the whole procedures without clothes in as follows.

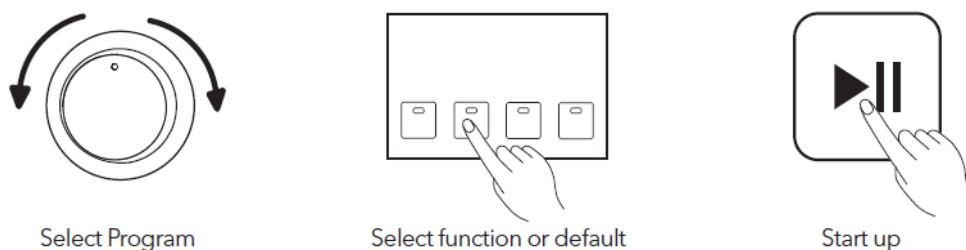
### 1. Before Washing



#### NOTE

Detergent need to be added in "case I" after selecting pre-washing for machines with this function.

### 2. Washing



#### NOTE

If default is selected, step 2 can be skipped.

The function button line chart is for reference only, please refer to real product as standard.

### 3. After Washing

The door lock and the [Start / Pause] lights flash with the buzzer beeping or two small points flash on the digital screen.

### Before Each Washing

- The working condition of the washer should be (0-40) °C. If used under 0 °C, the inlet valve and draining system may be damaged. If the machine is placed under condition of 0 °C or less, then it should be transferred to normal ambient temperature to ensure the water supply hose and drain hose are not frozen before use.
- Please check the labels and the explanation of using detergent before wash. Use non-foaming or less-foaming detergent suitable for machine washing properly.



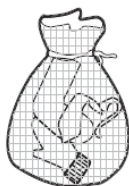
Check the label



Take out the items out of the pockets



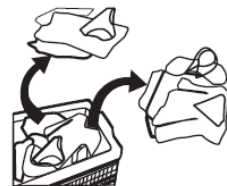
Knot the long strips, zip or button



Put small clothes into the pillow slip



Turn easy-pilling and long-pile fabric inside out




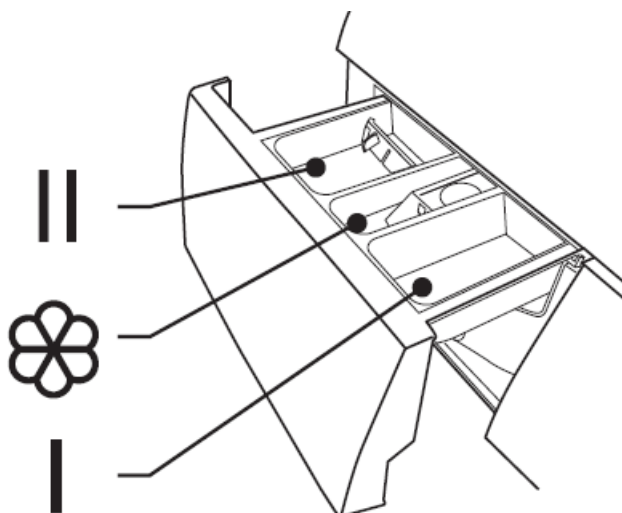
Separate clothes with different textures

## WARNING!

- When washing a single clothes, it may easily cause great eccentricity and give alarm due to great unbalance. Therefore it is suggested to add one or two more clothes to be washed together so that draining can be done smoothly.
- Don't wash clothes that have been in touch with kerosene, gasoline, alcohol and other flammable materials.

## Detergent Dispenser

- I Prewash detergent
- II Main wash detergent
-  Softener



Pull out the dispenser

## CAUTION!

Detergent only need to be added in "case I" after selecting pre-washing for machines with this function.

**Model: WF60832M, WF61033M**

Program	I	II	☼
Cotton 30 °C	○	●	○
Cotton 40 °C	○	●	○
Cotton 60 °C	○	●	○
Cotton 90 °C	○	●	○
Synthetic	○	●	○
Synthetic 40 °C	○	●	○
Drum Clean			
Cold Wash	○	●	○
Cold Wash 20 °C	○	●	○
Spin Only			
Drain Only			
Rinse&Spin			○

● Means must

○ Means optional

Program	I	II	☼
Delicate 30 °C		●	○
Delicate		●	○
Ends in 9H		●	○
Ends in 6H		●	○
Ends in 3H		●	○
Quick Wash 45'		●	○
Quick Wash 30'		●	○
Quick Wash 15'		●	○
ECO 40-60		●	○
Cotton Intensive 40 °C		●	○
Cotton Intensive 60 °C		●	○
Rinse&Spin		●	○

#### Model: WF61063M

Program	I	II	☼
Cotton 30 °C		●	○
Cotton 40 °C		●	○
Cotton 60 °C		●	○
Cotton 90 °C		●	○
Synthetic		●	○
Synthetic 40 °C		●	○
Drum Clean			
Cotton Intensive 40 °C		●	○
Cotton Intensive 60 °C		●	○
Quick Wash 45'		●	○
Quick Wash 30'		●	○
Quick Wash 15'		●	○

Program	I	II	☼
Spin Only			
Drain Only			
Rinse&Spin			○
Delicate 30 °C		●	○
Delicate		●	○
Mix 60 °C		●	○
Mix 40 °C		●	○
Mix		●	○
ECO 40-60		●	○
Cold Wash		●	○
Cold Wash 20°C		●	○

● Means must

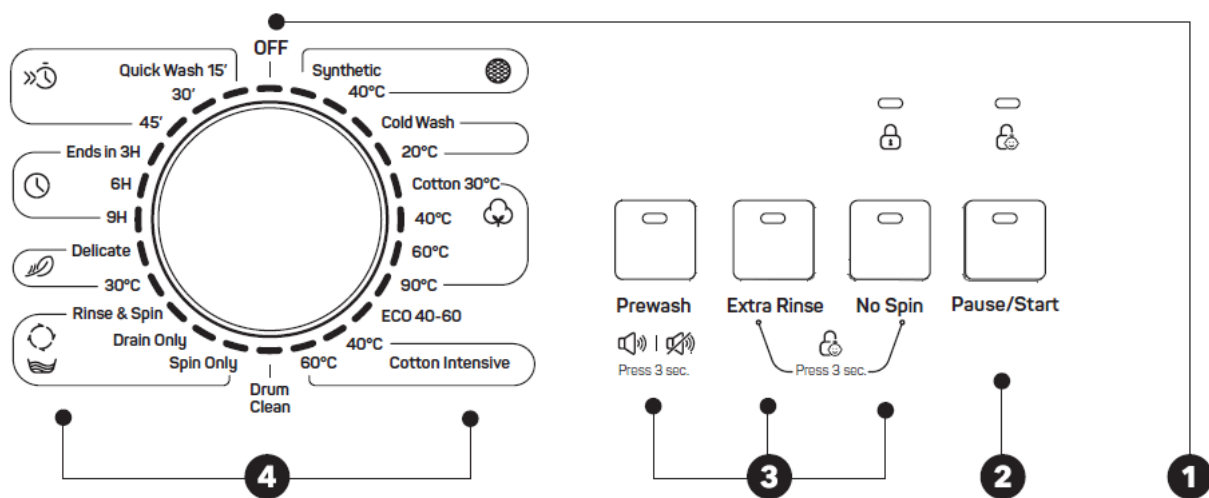
○ Means optional

#### NOTE

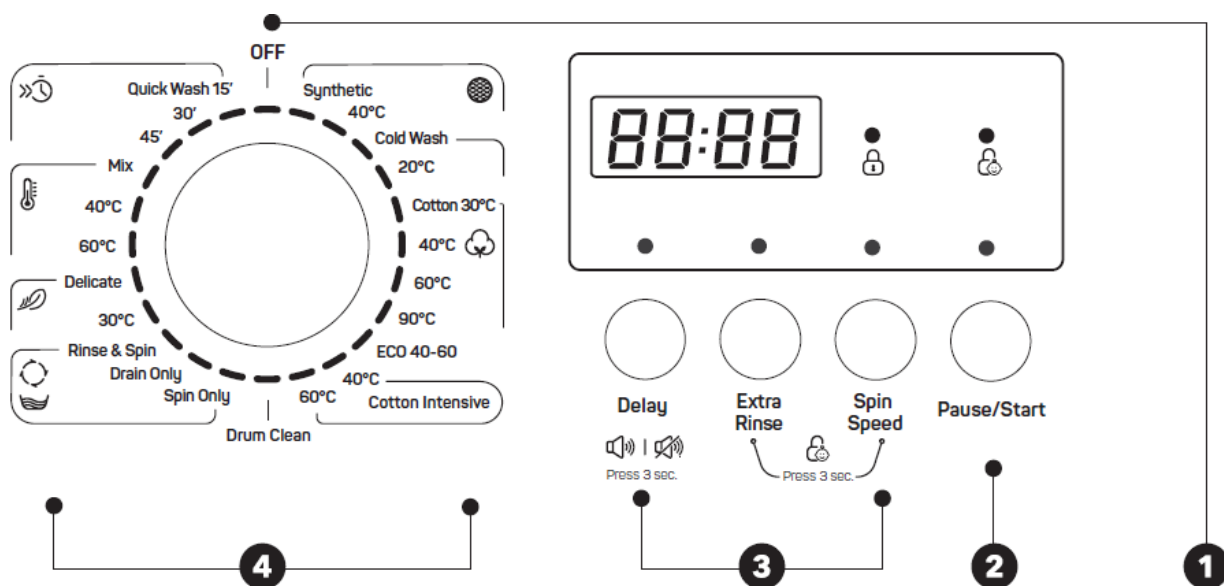
- As for the agglomerated or ropy detergent or additive, before they are poured into the detergent box, it is suggested to use some water for dilution to prevent the inlet of detergent box from being blocked and overflowing while filling water.
- Please choose suitable type of detergent for the various washing temperature to get the best washing performance with less water and energy consumption.

#### Control Panel

Model: WF60832M, WF61033M



**Model: WF61063M**



#### NOTE

The chart is for reference only, please refer to real product as standard.

#### 1. Off

Product is switched off.

#### 2. Option

This allows you to select an additional function and will light when selected

#### 3. Start/Pause

Press the button to start or pause the washing cycle.

#### 4. Programs

Available according to the laundry type.

#### NOTE

When the program is finished, the Pause/Start and Door Lock lights flash. (Model: WF60832M, WF61033M).

#### Option

##### Prewash

The Prewash function can get an extra wash before main wash, it is suitable for washing the dust off the surface of the clothes; You need to put detergent into the Case (I) when selecting it.

##### Extra Rinse

The laundry will undergo extra rinse once after you select it.

##### No Spin

It will not spin if you choose this function.

**Model: WF60832M, WF61033M,**

Program	Option		Program	Option	
	Prewash	Extra Rinse		Prewash	Extra Rinse
Cotton 30 °C	<input type="radio"/>	<input type="radio"/>	Ends in 9H		
Cotton 40 °C	<input type="radio"/>	<input type="radio"/>	Ends in 6H		
Cotton 60 °C	<input type="radio"/>	<input type="radio"/>	Ends in 3H		
Cotton 90 °C	<input type="radio"/>	<input type="radio"/>	Quick Wash 45'		
Synthetic	<input type="radio"/>	<input type="radio"/>	Quick Wash 30'		
Synthetic 40 °C	<input type="radio"/>	<input type="radio"/>	Quick Wash 15'		
Drum Clean			Spin Only		
Cotton Intensive 40°C			Cold Wash	<input type="radio"/>	<input type="radio"/>
Cotton Intensive 60°C			Cold Wash 20 °C	<input type="radio"/>	<input type="radio"/>
Drain Only			ECO 40-60		
Rinse&Spin		<input type="radio"/>			
Delicate 30 °C		<input type="radio"/>			
Delicate		<input type="radio"/>			

☐ Means optional

**Model: WF61063M**

Program	Option		Program	Option	
	Delay	Extra Rinse		Delay	Extra Rinse
Cotton 30 °C	<input type="radio"/>	<input type="radio"/>	Drain Only	<input type="radio"/>	
Cotton 40 °C	<input type="radio"/>	<input type="radio"/>	Rinse&Spin	<input type="radio"/>	<input type="radio"/>
Cotton 60 °C	<input type="radio"/>	<input type="radio"/>	Delicate 30 °C	<input type="radio"/>	<input type="radio"/>
Cotton 90 °C	<input type="radio"/>	<input type="radio"/>	Delicate	<input type="radio"/>	<input type="radio"/>
Synthetic	<input type="radio"/>	<input type="radio"/>	Mix 60 °C	<input type="radio"/>	<input type="radio"/>
Synthetic 40 °C	<input type="radio"/>	<input type="radio"/>	Mix 40 °C	<input type="radio"/>	<input type="radio"/>
Drum Clean	<input type="radio"/>		Mix	<input type="radio"/>	<input type="radio"/>
Spin Only	<input type="radio"/>		Cold Wash	<input type="radio"/>	<input type="radio"/>
Cotton Intensive 40°C	<input type="radio"/>		Cold Wash 20 °C	<input type="radio"/>	<input type="radio"/>
Cotton Intensive 60°C	<input type="radio"/>		ECO 40-60	<input type="radio"/>	
Quick Wash 45'	<input type="radio"/>		Quick Wash 15'	<input type="radio"/>	
Quick Wash 30'	<input type="radio"/>				

## Other Functions

### Mute the buzzer



Choose the  
Program

Press the [Prewash]/[Delay] button for  
3sec. The buzzer is mute.

To act the buzzer function, press the button again for 3 seconds. The setting will be kept until the next reset.

### CAUTION!

After Muting the buzzer function, the sounds will not be activated any more.

### Child Lock

To avoid mis operation by children.



## CAUTION!

### • Model: WF60832M, WF61033M

- Only press and hold the two button can release “Child Lock”, even power off, switch off and program end, the “Child Lock” will lock all buttons except power button and “Child Lock” button.
- Please release “Child Lock” before selecting program and starting washing.

### • Model: WF61063M

When child lock is activated and program starts, child lock indicator will switch on, and the CL and remaining time on the display are alternately displayed in 0.5s. Press the other buttons will make child lock indicator flash for 3s. when program finish, CL and END alternate for 10s in 0.5s, then the child lock lights flash for 3s.

- Only press and hold the two button can release child lock, even power off, switch off and program end
- The “Child Lock” will lock all buttons except Power button and Child Lock button please release child lock before selecting program and starting washing.

## Speed

### The speed is:

800: 0-400-600-800 1000: 0-400-600-800-1000

1200: 0-400-600-800-1000-1200

Program	Default Speed(rpm)			Program	Default Speed(rpm)		
	800	1000	1200		800	1000	1200
Cotton 30 °C	800	1000	1200	Spin Only	800	1000	1200
Cotton 40 °C	800	800	1200	Drain Only	-	-	-
Cotton 60 °C	800	800	1200	Rinse&Spin	800	1000	1200
Cotton 90 °C	800	800	1200	Delicate 30 °C	600	600	600
Synthetic	800	1000	1200	Delicate	600	600	600
Synthetic 40 °C	800	1000	1200	Quick Wash 45'	800	800	800
Drum Clean	400	400	--	Quick Wash 30'	800	800	800
Cold Wash	800	1000	1200	Quick Wash 15'	800	800	800
Cold Wash 20 °C	800	1000	1200	MIX 60°C	800	1000	1200
Cotton Intensive 40 °C	800	1000	1200	Mix 40°C	800	1000	1200
Cotton Intensive 60 °C	800	1000	1200	Mix	800	1000	1200
ECO 40-60	800	1000	1200				

## Programs

Programs are available according to the laundry type.

### 1. Synthetic

Wash synthetic articles, for example: shirts, coats, blending. While washing the knitting textiles, detergent quantity should be reduced due to its loose string construction and light forming bubbles.

### 2. Delicate

For delicate, washable textiles, e.g. made of silk, satin, synth fibers or blended fabrics.

### 3. **Drum Clean**

It applies 90 °C high temperature sterilization to make the clothes washing more green. When this procedure is performed, the clothes or other washing cannot be added. When proper amount of chlorine bleaching agent is put in the barrel cleaning effect will be better. The customer can use this program regularly according to the need.

### 4. **Spin Only**

Extra spin with selectable spin speed.

### 5. **Rinse&Spin**

Extra rinse with spin.

### 6. **Drain Only**

Drain off the water.

### 7. **Quick Wash 15'**

It is suitable for washing few and not very dirty clothes quickly.

### 8. **Cotton Intensive**

To increase the washing effects, washing time is increased.

### 9. **ECO 40-60**

Default 40°C,not selectable,suitable for laundry washing at about 40°C-60°C.

### 10. **Cold Wash**

Cold water to wash clothes.

### 11. **Cotton**

Hard-wearing textiles, heat-resistant textiles made of cotton or linen.

### 12. **Ends in\***

The function can be set with this program, the total time including washing time and delaying time is 3h,6h or 9h.

### Mix\*\*

You can select this procedure wash the tough clothes, that need much more time and strength. It is used for the daily clothes made of cotton, such as sheets, towels, pillowcases bathrobe and underwear.

\* Model: WF60832M, WF61033M

\*\* Model: WF61063M

### **Washing Programs Table**

**Model:** WF60832M, WF61033M



Program	Load (kg)	Temp. °C	Default Time
	6	Default	6
Synthetic	3.25	Cold	2:20
Synthetic 40°C	3.25	40	2:20
Cold Wash	6	Cold	1:00
Cold Wash 20°C	6	20	1:01
Cotton 30°C	6	30	2:40
Cotton 40°C	6	40	2:40
Cotton 60°C	6	60	2:45
Cotton 90°C	6	90	2:50
ECO 40-60	6	60	3:16
Cotton Intensive 40°C	6	40	4:04
Cotton Intensive 60°C	6	60	4:08
Drum Clean	-	90	1:18
Spin Only	6	-	0:12
Drain Only	-	-	0:01
Rinse&Spin	6	-	0:20
Delicate 30°C	2.7	30	0:50
Delicate	2.7	Cold	0:48
Ends in 9H	6	40	0:59
Ends in 6H	6	40	0:59
Ends in 3H	6	40	0:59
Quick Wash 45'	2.2	40	0:45
Quick Wash 30'	2.2	30	0:30
Quick Wash 15'	2.2	Cold	0:15

The new EU energy efficiency class is E

Energy test program: ECO 40-60. Speed: the highest speed; Other as the default.

Half load for 6Kg machine:3.25Kg.

The old EU energy efficiency class is A+

Energy test program: Cotton Intensive 60°C/40°C.Speed: the highest speed; Other as the default. Half load for 6Kg machine:3.25Kg.

#### NOTE

The parameters in this table are only for user's reference. The actual parameters may be different with the parameters in above mentioned table.

**Model: WF61063M**

Program	Load (kg)	Temp. °C	Default Time
	6	Default	6:5
Synthetic	3.25	Cold	2:20
Synthetic 40°C	3.25	40	2:20
Cold Wash	6	Cold	1:00
Cold Wash 20°C	6	20	1:01
Cotton 30°C	6	30	2:40
Cotton 40°C	6	40	2:40
Cotton 60°C	6	60	2:45
Cotton 90°C	6	90	2:50
ECO 40-60	6	60	3:24
Cotton Intensive 40°C	6	40	4:12
Cotton Intensive 60°C	6	60	4:16
Drum Clean	-	90	1:18
Spin Only	6	-	0:12
Drain Only	-	-	0:01
Rinse&Spin	6	-	0:20
Delicate 30°C	2.5	30	0:50
Delicate	2.5	Cold	0:48
Mix 60°C	6	60	1:11
Mix 40°C	6	40	0:59
Mix	6	Cold	0:59
Quick Wash 45'	2.0	40	0:45
Quick Wash 30'	2.0	30	0:30
Quick Wash 15'	2.0	Cold	0:15

The new EU energy efficiency class is E

Energy test program: ECO 40-60. Speed: the highest speed; Other as the default.

Half load for 6Kg machine:3.25Kg.

The old EU energy efficiency class is A

Energy test program: Cotton Intensive 60°C/40°C.Speed: the highest speed; Other as the default. Half load for 6Kg machine:3.25Kg.

NOTE

The parameters in this table are only for user's reference. The actual parameters may be different with the parameters in above mentioned table.

## MAINTENANCES

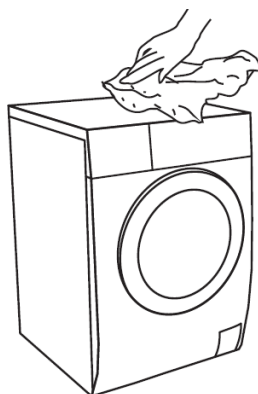
### Cleaning and Care

#### WARNING!

Before your maintenance starts, please unplug the machine and close the tap.

#### Cleaning The Cabinet

Proper maintenance on the washing machine can extend working life. The surface can be cleaned with diluted non-abrasive neutral detergents when necessary. If there any water overflow, use the wet cloth to wipe it off immediately. No sharp items are allowed.



#### NOTE

Formic acid and its diluted solvents or equivalent are forbidden, such as alcohol, solvents or chemical products etc.

### Cleaning The Drum

The rusts left inside the drum by the metal articles should be removed immediately with chlorine-free detergents. Never use steel wool.

#### NOTE

Don't put laundry in the washing machine during the drum cleaning.

### Cleaning The Door Seal and Glass

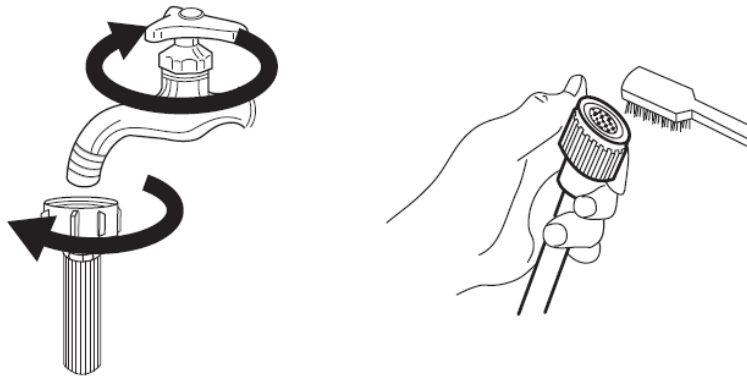
Wipe the glass and seal after each wash to remove lint and stains. If lint builds up it can cause leaks. Remove any coins, buttons and other objects from the seal after each wash.



### Cleaning The Inlet Filter

#### NOTE

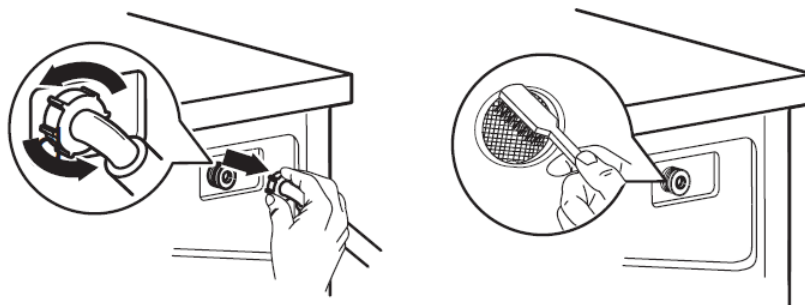
- Inlet filter must be cleaned if there is less water.



### Washing the filter in the tap

1. Close the tap.
2. Remove the water supply hose from the tap.
3. Clean the filter.
4. Reconnect the water supply hose.

### Washing the filter in washing machine:

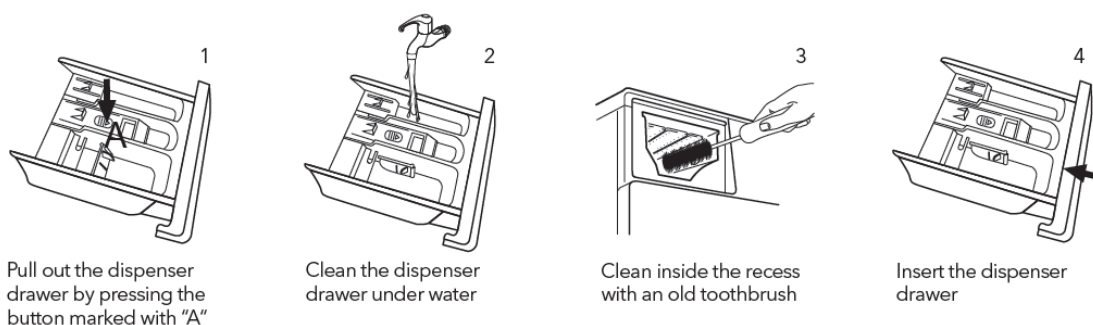


1. Screw off the inlet pipe from the backside of the machine.
2. Pull out the filter with long nose pliers and reinstall it back after being wash
3. Use the brush to clean the filter.
4. Reconnect the inlet pipe.

#### NOTE

- If the brush is not clean, you can pull out the filter and wash it separately;
- Reconnect, turn on the tap.

### Clean The Detergent Dispenser



1. Press down the arrow location on softener cover inside the dispenser drawer.
2. Lift the clip up and take out softener cover and wash all grooves with water.
3. Restore the softener cover and push the drawer into position.

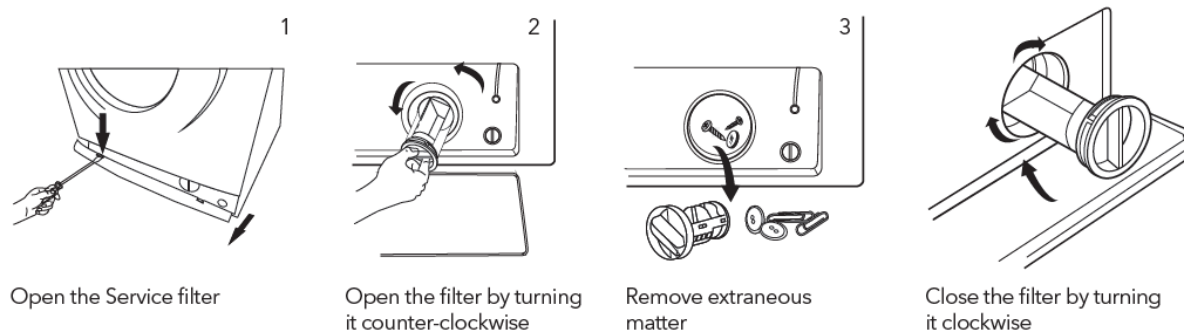
### NOTE

Do not use alcohol, solvents or chemical products to clean the machine.

### Cleaning The Drain Pump Filter

#### WARNING!

- Be careful of the hot water!
- Allow detergent solution to cool down.
- Unplug the machine to avoid electrical shock before washing.
- Drain pump filter can filter the yarns and small foreign matters from the washing.
- Clean the filter periodically to ensure the normal operation of washing machine.





### CAUTION!

- Make sure that valve cap and emergency drain hose are reinstalled properly, cap plates should be inserted aligning to hole plates otherwise water may leak;
- Some machines don't have emergency drain hose, rotate lower cover cap directly to make water run into basin.
- When the appliance is in use and depending on the program selected there can be hot water in the pump.  
Never remove the pump cover during a wash cycle, always wait until the appliance has finished the cycle, and is empty. When replacing the cover, ensure it is securely re-tightened.

### Troubleshooting

The start of the appliance does not work or it stops during operation. First try to find a solution to the problem, If not, contact the service centre.

Description	Reason	Solution
Washing machine cannot start up	Door is not closed properly	Restart after the door is closed Check if the clothes are stuck
Door can't be opened	Washer's safety protection design is working	Disconnect the power, restart the product
Water leakage	The connection between inlet pipe or outlet hose is not tighten	Check and fasten water pipes Clean up outlet hose
Detergent residues in the box	Detergent is dampened or agglomerated	Clean and wipe the detergent box
Indicator or display does not light	Disconnect the power PC board or harness has connection problem	Check if the power is shut down and the power plug is connected correctly

Description	Reason	Solution
<div> <div>   </div> <div>           Pause/Start No Spin Extra Rinse Prewash         </div> </div>		
Flash Off Off Off Off Off	Door is not closed properly	Restart after the door is closed Check if the clothes is stuck
Off Off Off Flash Off	Water injecting problem while washing	Check if the water pressure is too low Straighten the water pipe Check if the inlet valve filter is blocked
Off Off Flash Flash Off	Overtime water draining	Check if the drain hose is blocked
Off Off Off Off Flash	Water overflow	Restart the washer
Other	Please try the solutions again, if unsuccessful, please call our service line	

Description	Reason	Solution
E30	Door is not closed properly	Restart after the door is closed Check if the clothes are stuck
E10	Water injecting problem while washing	Check if the water pressure is too low Straighten the water pipe Check if the inlet valve filter is blocked
E21	Overtime water draining	Check if the drain hose is blocked
E12	Water overflow	Restart the washer
Other	Please try the solutions again, if unsuccessful, please call our service line.	

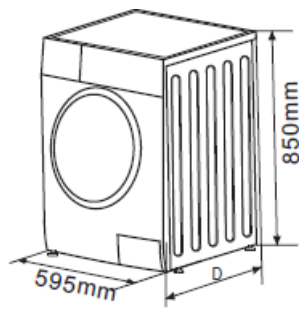
## NOTE

After the check, activate the appliance. If the problem occurs again, contact the service.

## Technical Specifications

Power Supply	220-240V~,50Hz
MAX.Current	10A
Standard Water Pressure	0.05MPa~1MPa

Model	Washing Capacity	Dimension (WxDxHmm)	Net Weight	Rated Power
WF60832M	6kg	595x400x850	52kg	2050W
WF61033M	6kg	595x400x850	52kg	2000W
WF61063M	6kg	595x400x850	52kg	2000W



## Product information sheet

**Model: WF60832M**

COMMISSION DELEGATED REGULATION (EU) 2019/2014 with regard to energy labelling of household washing machines and household washer-dryers

- Supplier's name or trade mark: Tesla
- Supplier's address: Tesla Electronics, Litijska 47, 1000 Ljubljana, SI
- Model identifier: WF60832M
- **General product parameters:**

Parameter	Value		Parameter	Value	
Rated capacity <sup>(*)</sup> (kg)	6		Dimensions in cm	Height	85
				Width	60
				Depth	40
EEI <sub>w</sub> <sup>(*)</sup>	91.0		Energy efficiency class <sup>(*)</sup>	E	
Washing efficiency index <sup>(*)</sup>	1,040		Rinsing effectiveness (g/kg) <sup>(*)</sup>	6	
Energy consumption in kWh per cycle, based on the eco 40-60 programme at a combination of full and partial loads. Actual energy consumption will depend on how the appliance is used.	0.685		Water consumption in litre per cycle, based on the eco 40-60 programme at a combination of full and partial loads. Actual water consumption will depend on how the appliance is used and on the hardness of the water.	41	
Maximum temperature inside the treated textile <sup>(*)</sup> (°C)	Rated capacity	37	Weighted remaining moisture content <sup>(*)</sup> (%)	62.0	
	Half	-			
	Quarter	-			

Spin speed (°) (rpm)	Rated capacity	800	Spin-drying efficiency class (°)	D
	Half	-		
	Quarter	-		
Programme duration (°) (h:min)	Rated capacity	3:08	Type	free-standing
	Half	-		
	Quarter	-		
Airborne acoustical noise emissions in the spinning phase (°) (dB(A) re 1 pW)	80		Airborne acoustical noise emission class (°) (spinning phase)	C
Off-mode (W) (if applicable)	0.50		Standby mode (W) (if applicable)	1.00
Delay start (W) (if applicable)	N/A		Networked standby (W) (if applicable)	N/A
Minimum duration of the guarantee offered by the supplier: 24 months				
This product has been designed to release silver ions during the washing cycle			NO	

#### Additional information:

Weblink to the supplier's website, where the information in point 9 of Annex II to Commission Regulation (EU) 2019/2023 is found: [tesla.info](https://tesla.info)

(a) for the eco programme.

#### Link to the EU EPREL database

The QR code on the energy label supplied with the appliance provides a web link to the registration of this appliance in the EU EPREL database.

Keep the energy label for reference together with the user manual and all other documents provided with this appliance.

It is possible to find information related to the performance of the product in the EU EPREL database using the link <https://eprel.ec.europa.eu> and the model name and product number that you can find on the rating plate of the appliance. For more detailed information about the energy label, visit [www.theenergylabel.eu](http://www.theenergylabel.eu).

**Model: WF61033M**

COMMISSION DELEGATED REGULATION (EU) 2019/2014 with regard to energy labelling of household washing machines and household washer-dryers

- Supplier's name or trade mark: Tesla
- Supplier's address: Tesla Electronics, Litijska 47, 1000 Ljubljana, SI
- Model identifier: WF61033M
- General product parameters:

Parameter	Value		Parameter	Value	
Rated capacity (*) (kg)	6		Dimensions in cm	Height	85
				Width	60
				Depth	40
EEI <sub>w</sub> (*)	91.0		Energy efficiency class (*)	E	
Washing efficiency index (*)	1,040		Rinsing effectiveness (g/kg) (*)	6	
Energy consumption in kWh per cycle, based on the eco 40-60 programme at a combination of full and partial loads. Actual energy consumption will depend on how the appliance is used.	0,737		Water consumption in litre per cycle, based on the eco 40-60 programme at a combination of full and partial loads. Actual water consumption will depend on how the appliance is used and on the hardness of the water.	43	
Maximum temperature inside the treated textile (*) (°C)	Rated capacity	41	Weighted remaining moisture content (*) (%)	62.0	
	Half	-			
	Quarter	-			
Spin speed (*) (rpm)	Rated capacity	1000	Spin-drying efficiency class (*)	C	
	Half	-			
	Quarter	-			
Programme duration (*) (h:min)	Rated capacity	3:18	Type	free-standing	
	Half	3:18			
	Quarter	-			
Airborne acoustical noise emissions in the spinning phase (*) (dB(A) re 1 pW)	80		Airborne acoustical noise emission class (*) (spinning phase)	C	
Off-mode (W) (if applicable)	0.50		Standby mode (W) (if applicable)	1.00	
Delay start (W) (if applicable)	N/A		Networked standby (W) (if applicable)	N/A	
Minimum duration of the guarantee offered by the supplier: 24 months					
This product has been designed to release silver ions during the washing cycle			NO		

#### Additional information:

Weblink to the supplier's website, where the information in point 9 of Annex II to Commission Regulation (EU) 2019/2023 is found: [tesla.info](https://tesla.info)

(a) for the eco 40-60 programme.

#### Link to the EU EPREL database

The QR code on the energy label supplied with the appliance provides a web link to the registration of this appliance in the EU EPREL database.

Keep the energy label for reference together with the user manual and all other documents provided with this appliance.

It is possible to find information related to the performance of the product in the EU EPREL database using the link <https://eprel.ec.europa.eu> and the model name and product number that you can find on the rating plate of the appliance. For more detailed information about the energy label, visit [www.theenergylabel.eu](https://www.theenergylabel.eu).

**Model: WF61063M**

COMMISSION DELEGATED REGULATION (EU) 2019/2014 with regard to energy labelling of household washing machines and household washer-dryers



- Supplier's name or trade mark: Tesla
- Supplier's address: Tesla Electronics, Litijska 47, 1000 Ljubljana, SI
- Model identifier: WF61063M
- General product parameters:

Parameter	Value		Parameter	Value	
Rated capacity (*) (kg)	6		Dimensions in cm	Height	85
				Width	60
				Depth	40
EEL <sub>w</sub> (*)	91.0		Energy efficiency class (*)	E	
Washing efficiency index (*)	1,040		Rinsing effectiveness (g/kg) (*)	6	
Energy consumption in kWh per cycle, based on the eco 40-60 programme at a combination of full and partial loads. Actual energy consumption will depend on how the appliance is used.	0,737		Water consumption in litre per cycle, based on the eco 40-60 programme at a combination of full and partial loads. Actual water consumption will depend on how the appliance is used and on the hardness of the water.	43	
Maximum temperature inside the treated textile (*) (°C)	Rated capacity	41	Weighted remaining moisture content (*) (%)	62.0	
	Half	-			
	Quarter	-			
Spin speed (*) (rpm)	Rated capacity	1000	Spin-drying efficiency class (*)	C	
	Half	-			
	Quarter	-			
Programme duration (*) (h:min)	Rated capacity	3:18	Type	free-standing	
	Half	-			
	Quarter	-			
Airborne acoustical noise emissions in the spinning phase (*) (dB(A) re 1 pW)	80		Airborne acoustical noise emission class (*) (spinning phase)	C	
Off-mode (W) (if applicable)	0.50		Standby mode (W) (if applicable)	1.00	
Delay start (W) (if applicable)	N/A		Networked standby (W) (if applicable)	N/A	
Minimum duration of the guarantee offered by the supplier: 24 months					
This product has been designed to release silver ions during the washing cycle			NO		

#### Additional information:

Weblink to the supplier's website, where the information in point 9 of Annex II to Commission Regulation (EU) 2019/2023 is found: [tesla.info](https://tesla.info)

(a) for the eco programme.

#### Link to the EU EPREL database

The QR code on the energy label supplied with the appliance provides a web link to the registration of this appliance in the EU EPREL database.

Keep the energy label for reference together with the user manual and all other documents provided with this appliance.

It is possible to find information related to the performance of the product in the EU EPREL database using the link <https://eprel.ec.europa.eu> and the model name and

product number that you can find on the rating plate of the appliance. For more detailed information about the

energy label, visit [www.theenergylabel.eu](http://www.theenergylabel.eu).

## EU DECLARATION OF CONFORMITY

**Manufacturer business name:** TESLA/COMRADE DISTRIBUTION D.O.O. BEOGRAD

**Manufacturer address:** BULEVAR ZORANA DINDICA 1251, 11000 BEOGRAD

WE, MANUFACTURER OF BELOW DESCRIBED PRODUCTS, HEREBY DECLARE UNDER OUR SOLE RESPONSIBILITY, THAT THE PRODUCTS TO WHICH THIS DECLARATION RELATES:

### product description:

Brand	Model	Type of products
TESLA	WF60832M	Washing machine
TESLA	WF61033M	Washing machine
TESLA	WF61063M	Washing machine

ARE IN CONFORMITY WITH THE FOLLOWING STANDARDS AND LEGISLATIVE ACTS:

Harmonised standard	Legislative act
EN55014-1:2017 EN55014-2:2015 EN61000-3-2:2019 EN61000-3-3:2013+A1:2019	Electromagnetic Compatibility (EMC) 2014/30/EU
EN62233:2008 EN600335-1:2012+A11:2014+A13:2017+A1:2019 +A14:2019+A2:2019 EN60335-2-7:2010+A1:2013+A11:2013+A2:2019	Low Voltage Directive (LVD) 2014/35/EU
EN62321-1:2013 EN62321-2:2014	Restriction of Hazardous Substances (RoHS) 2011/65/EN 2015/863/EU

EN462321-3-1:2014	
EN62321-4:2014	
EN62321-5:2014	
EN62321-6:2015	
EN62321-7-1:2015	
EN62321-7-2:2017	
EN62321-8:2017	
EU60456/2016/FprAA:2020	Eco-design of Energy related Products (ErP) 2009/125/EC EU 2019/2014 EU 2019/2023 EU 2021/340 EU 2021/341

Place and date of issue: Belgrade, 10.04.2023.

Signed for and on behalf of manufacturer:

**Comtrade Distribution d.o.o. Beograd**

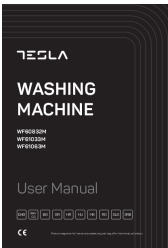
**Address:** Bulevar Zorana Dindica 125I 11000 Belgrade, Serbia

**Phone:**+381 11 201 55 55

**Email:** [distribution.rs@comtrade.com](mailto:distribution.rs@comtrade.com)

[www.comtradedistribution.com](http://www.comtradedistribution.com)

## Documents / Resources

	<p><b><a href="#">TESLA WF60832M Front Loading Washing Machines</a></b> [pdf] User Manual          WF60832M, WF61033M, WF61063M, WF60832M Front Loading Washing Machines, Loading Washing Machines, Washing Machines, Machines</p>
---	--

## References

- [🌐 Tesla.info | Technology for all](https://tesla.info)
- [🌐 APPLiA Europe | The new Energy Label | Belgium](#)
- [User Manual](#)