




TESLA TSL-SPL-1 Smart Power Plug User Manual

[Home](#) » [Tesla](#) » TESLA TSL-SPL-1 Smart Power Plug User Manual 

Contents

- 1 TESLA TSL-SPL-1 Smart Power Plug
 - 1.1 Safety Information
 - 1.2 INFORMATION ABOUT DISPOSAL AND RECYCLING
- 2 Documents / Resources
 - 2.1 References
- 3 Related Posts



TESLA TSL-SPL-1 Smart Power Plug



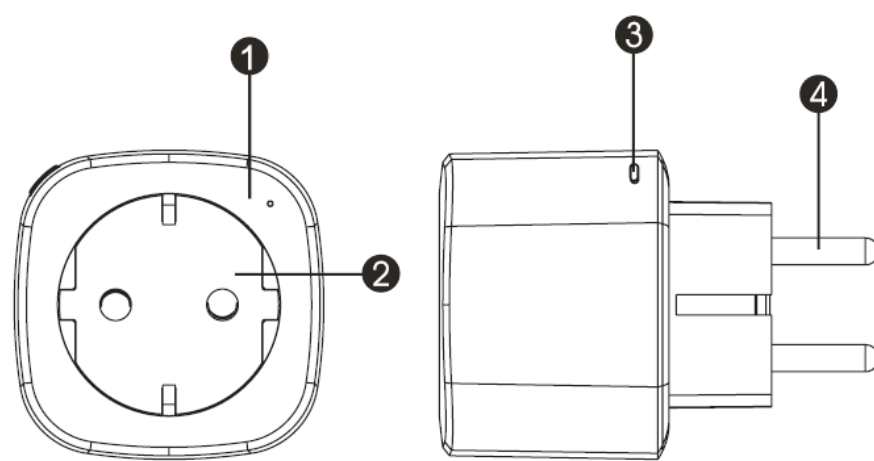
Package content

- 1x Smart Power Plug
- 1x User Manual

Function Diagram

1. Smart Power Plug
2. Electrical Outlet
3. Power Button 4

4. Plug



SPECIFICATION

Power Supply	AC 230V~50Hz
Max Power	3680W
Single outlet current	16A max
WIFI-Fi standard	2.4GHz (make sure your router is 2.4GHz if the router has two line)
Operation Temperature	0-35 °C
Storage Temperature	-10 °C- +40 °C
Humidity in operation	5% – 65%
WLAN Specification	<p>Standard: 802.11 b/g/n Encryption: WEP / WPA / WPA2</p> <p>Frequency range: 2412 – 2472 MHz Max.</p> <p>Transmitting power: 802.11b : +18dBm</p> <p>802.11g : +16dBm 802.11n(-20MHz): +140dBm</p> <p>Channel: 1-13</p>

Safety Information

IMPORTANT: Please read and comply with all the instructions and warnings provided in this user manual before using the product. Failure to comply with the instructions and warning provided herein may result in inaccurate results and/or damage to product itself.

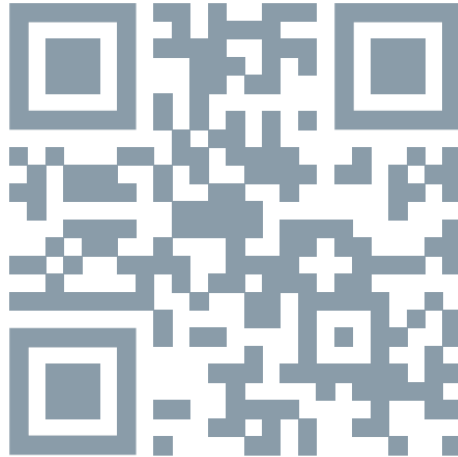
WARNING: DO NOT connect a device that exceeds the power ratings for this power socket. Doing so may overheat or cause possible damage to the device or other equipment. DO NOT use the power socket if it is damaged in any way, shape, or form. DO NOT attempt to repair, disassemble or modify this device under any circumstances. Doing so may damage the device or cause electric shock and possible injury. DO NOT place the

power socket near any heat source or in direct sunlight. DO NOT place or operate the power socket in high-humidity environments. DO NOT operate the power socket if there is a strange odor or heat emitting from the power socket or a connected device, contact customer support immediately. DO NOT touch any electrical appliances with wet hands or handle appliances near liquids. Avoid using excessive force when handling the power socket. Keep the power socket dry and clean at all times. DO NOT use any solvents or cleaning solutions on the power socket. Clean only with a soft, dry cloth. Never overload electrical circuits as it may cause an electrical shock or fire.

How to Connect Wi-Fi?

Step 1: Download & Registration ·Scan the QR Code to download Tesla Smart APP. Or Search Tesla Smart in Apple store or Google Play to install the APP

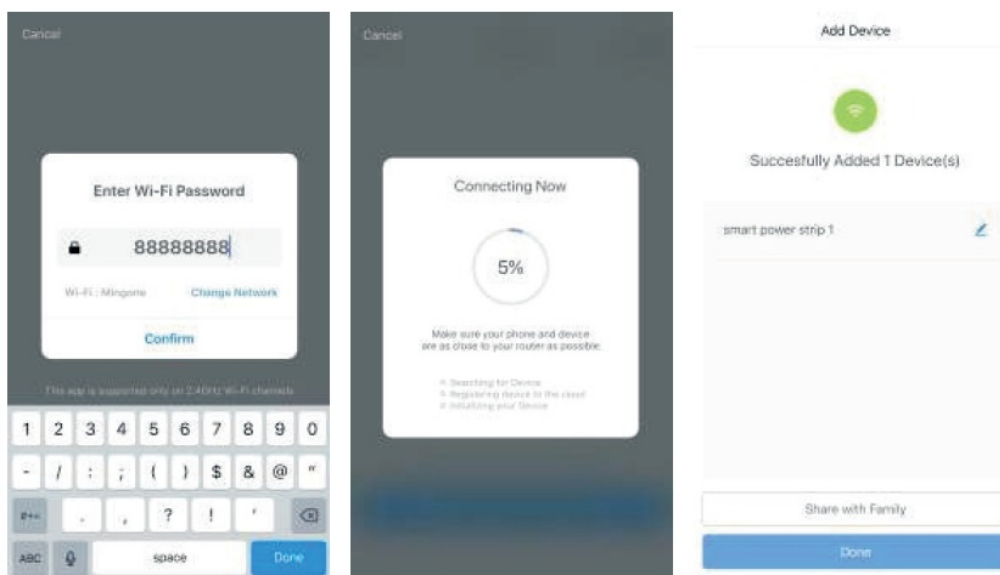
- Open the Tesla Smart App, tap Register to get an account with your phone number or E-mail. Sign in the App.



Step 2: Add Devices in Easy Mode (Recommend)

- Make sure your Tesla Smart Plug is powered on
- Make sure your mobile phone is connected to your Wi-Fi
- Press the power button for more than 5 seconds until the indicator begin to flash quickly (about 2times/second) this means the device is ready for configuration
- Open your „ Tesla Start” APP, tap „+” on the top right of the APP.
- Select Device Type, tap „ confirm indicator rapidly blink”. It will fetch the password of the Wi-Fi network your mobile phone is connected to.

Tap „Confirm” to connect to the device, when it appears „ successfully add 1device”, then the connection is completed and your devices is listed in your APP list.



INFORMATION ABOUT DISPOSAL AND RECYCLING

This product is marked with the symbol for separate collection. The product must be disposed of in accordance with the regulations for disposal of electrical and electronic equipment (Directive 2012/19/EU on waste electrical and electronic equipment). Disposal together with regular municipal waste is prohibited. Dispose of all electrical and electronic products in accordance with all local and European regulations at the designated collection points which hold the appropriate authorization and certification in line with the local and legislative regulations. Correct disposal and recycling help to minimize impacts on the environment and human health. Further information regarding disposal can be obtained from the vendor, authorized service center or local authorities.

EU DECLARATION OF CONFORMITY

Hereby, Witty s.r.o. declares that the radio equipment type TSL-SPL-1 is in compliance with EU directives. The full text of the EU declaration of conformity is available at the following internet address: teslasmart.com/declaration

- **Connectivity:** Wi-Fi 2,4 GHz IEEE 802.11b/g/
- **Frequency band:** 2.400 – 2.4835 GHz (Wi-Fi)
- **Max. radio-frequency power (EIRP):** < 20 dBm

Manufacturer

Tesla Global Limited
121 Des Voeux Road Central
Hong Kong www.teslasmart.com

Documents / Resources

	<p>TESLA TSL-SPL-1 Smart Power Plug [pdf] User Manual TSL-SPL-1, Smart Power Plug, TSL-SPL-1 Smart Power Plug</p>
--	---

References

