



TESLA TSL-SEN-BUTTON Smart Sensor Button User Manual

[Home](#) » [Tesla](#) » TESLA TSL-SEN-BUTTON Smart Sensor Button User Manual 

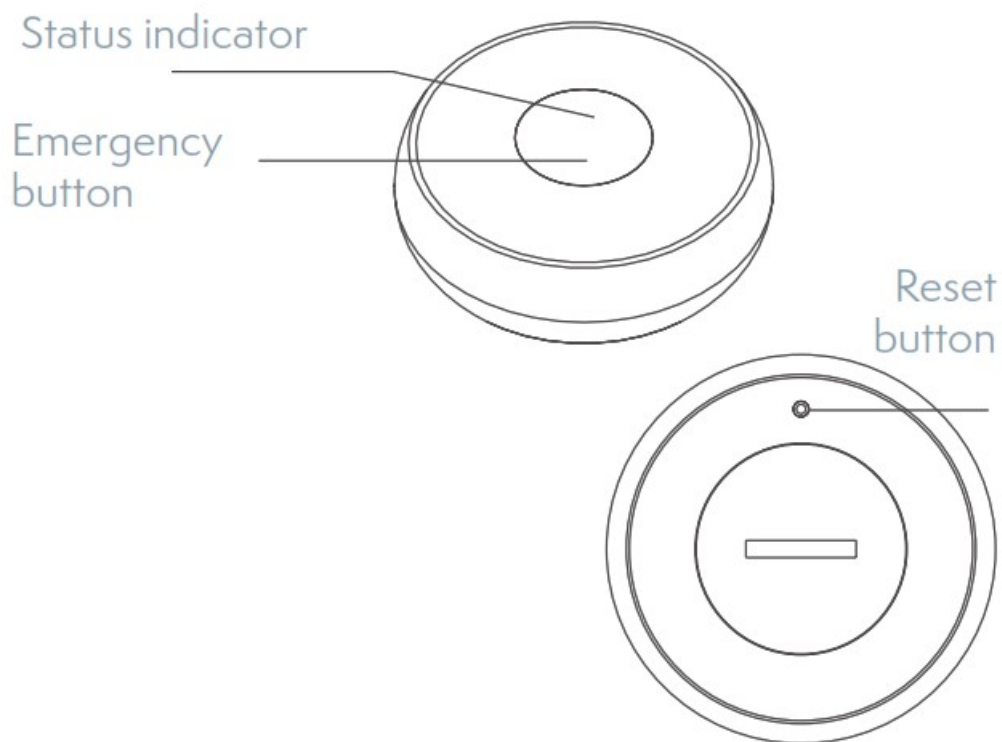


**TESLA SMART
SENSOR BUTTON**
USER MANUAL

Contents

- [1 Product Description](#)
- [2 Network Setting](#)
- [3 Installation Instructions](#)
- [4 Technical Parameters](#)
- [5 Documents / Resources](#)
 - [5.1 References](#)
- [6 Related Posts](#)

Product Description

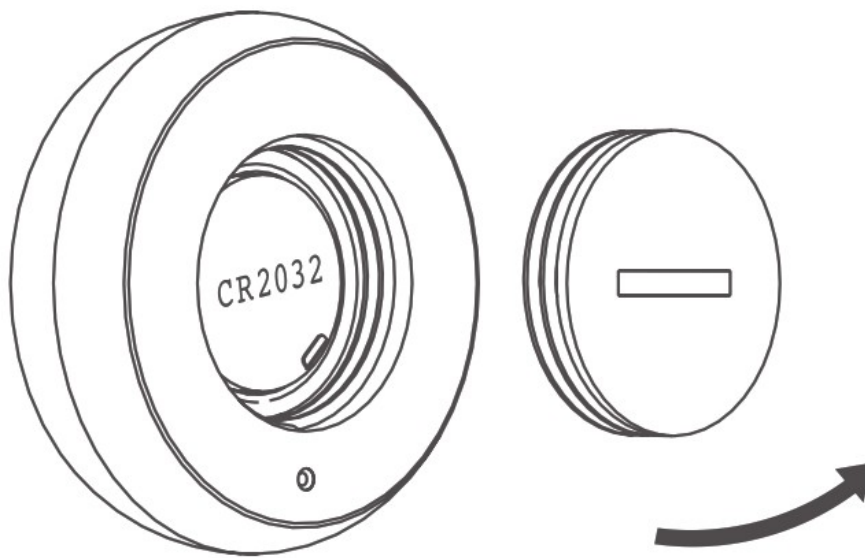


Linkage Setting (Detail please refer to APP)

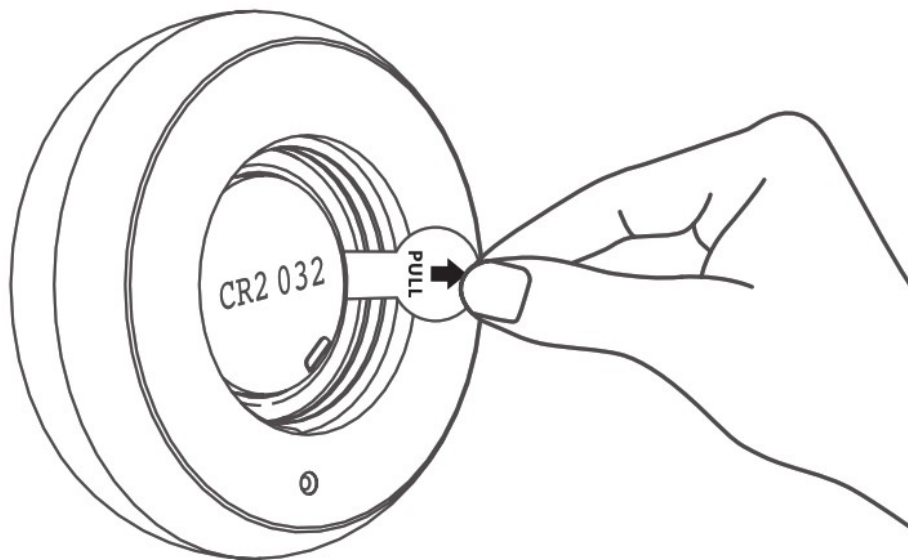
- Single click
- Double click
- Long press (LED off after 3s, release the button)

Network Setting

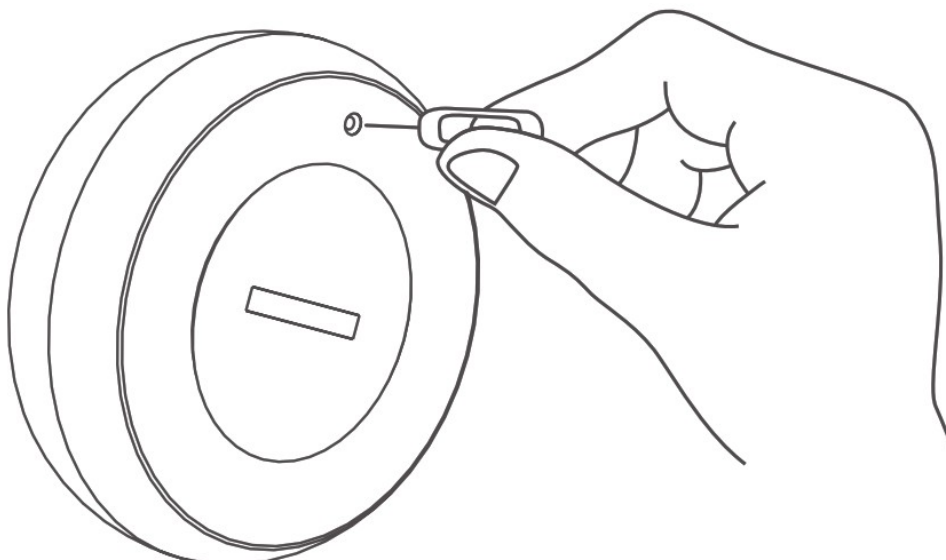
1. Power on the product.



Insert a thin blade or coin into the slot on the battery cover and rotate it anticlockwise to open the battery cover.

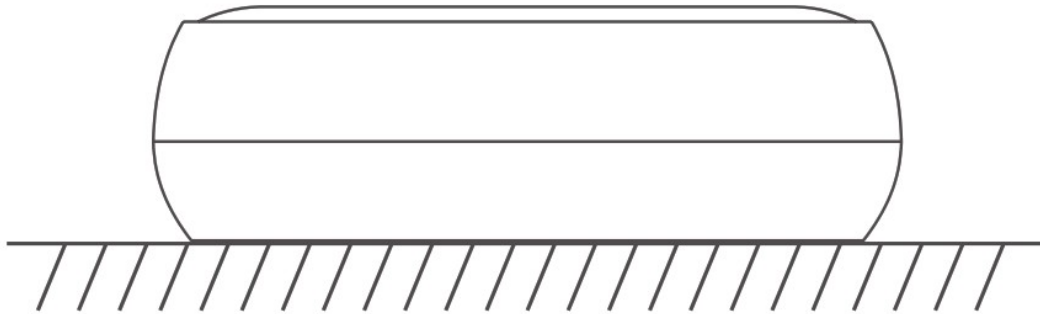


Remove the battery insulation film to power on the product and close the battery cover.
 2. Press the reset button for 5S and release, the red LED will flash f or network setting.
 Use a pin to press the button for 5s.

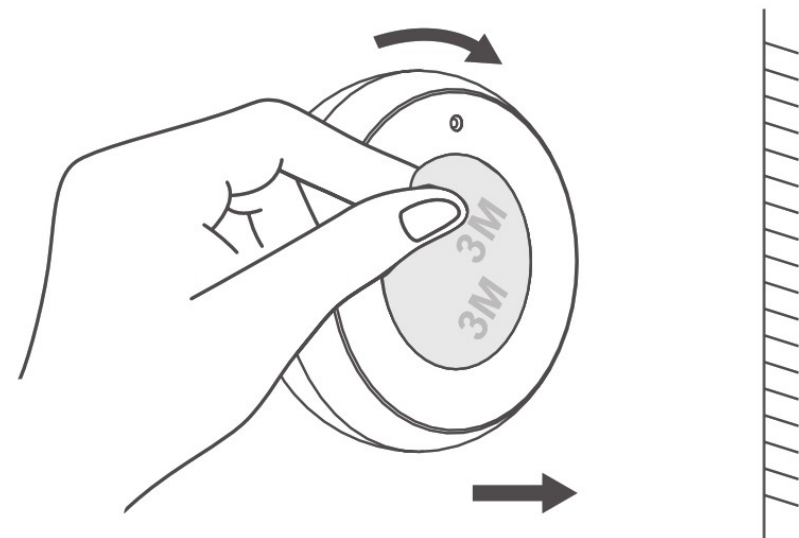


Network Setting Note:

Press the reset button for 5s-10s, the red LED is on for 5s then turns off, release the reset button for network setting. During network setting, LED keeps on flashing for 20s. If pressing for more than 10s, network setting cancelled The red LED will be on for 5s to indicate network setting succeeds. If fails, the red LED is off.

Installation Instructions

Method 1: Directly place the product in the target position.



Method 2: Remove the protective film from the adhesive and attach the product to the target position.

Technical Parameters

Wireless Technology	ZigBee
Working Voltage	DC 3 V (CR 2032 battery)
Transmission Frequency	2.4 GHz
Working Temperature	-10°C to +55°C
Undervoltage Alarm	supported
Dimensions	Ø 50 mm x 16 mm

INFORMATION ABOUT DISPOSAL AND RECYCLING

This product is marked with the symbol for separate collection. The product must be disposed of in accordance with the regulations for disposal of electrical and electronic equipment (Directive 2012/19/EU on waste electrical and electronic equipment). Disposal together with regular municipal waste is prohibited. Dispose of all electrical

and electronic products in accordance with all local and European regulations at the designated collection points which hold the appropriate authorisation and certification in line with the local and legislative regulations. Correct disposal and recycling help to minimise impacts on the environment and human health. Further information regarding disposal can be obtained from the vendor, authorised service centre or local authorities.

EU DECLARATION OF CONFORMITY

Hereby, Tesla Global Limited declares that the radio equipment type TSL-SEN-BUTTON is in compliance with EU directives. The full text of the EU declaration of conformity is available at the following internet address: tsl.sh/doc

Connectivity: Wi-Fi 2,4 GHz IEEE 802.11b/g/n

Frequency band: 2.412 – 2.472 MHz

Max. radio-frequency power (EIRP): < 20 dBm



Manufacturer


Tesla Global Limited

Far East Consortium Building, 121 Des Voeux Road Central Hong Kong



www.teslasmart.com



Documents / Resources

	<p>TESLA TSL-SEN-BUTTON Smart Sensor Button [pdf] User Manual</p> <p>TSL-SEN-BUTTON Smart Sensor Button, TSL-SEN-BUTTON, Smart Sensor Button, Sensor Button, Button</p>
---	---

References

-  [Sign in to your account](#)
-  [TESLA | Smart home in your hands](#)