



TESLA Smart Sensor Button User Manual

[Home](#) » [Tesla](#) » TESLA Smart Sensor Button User Manual 

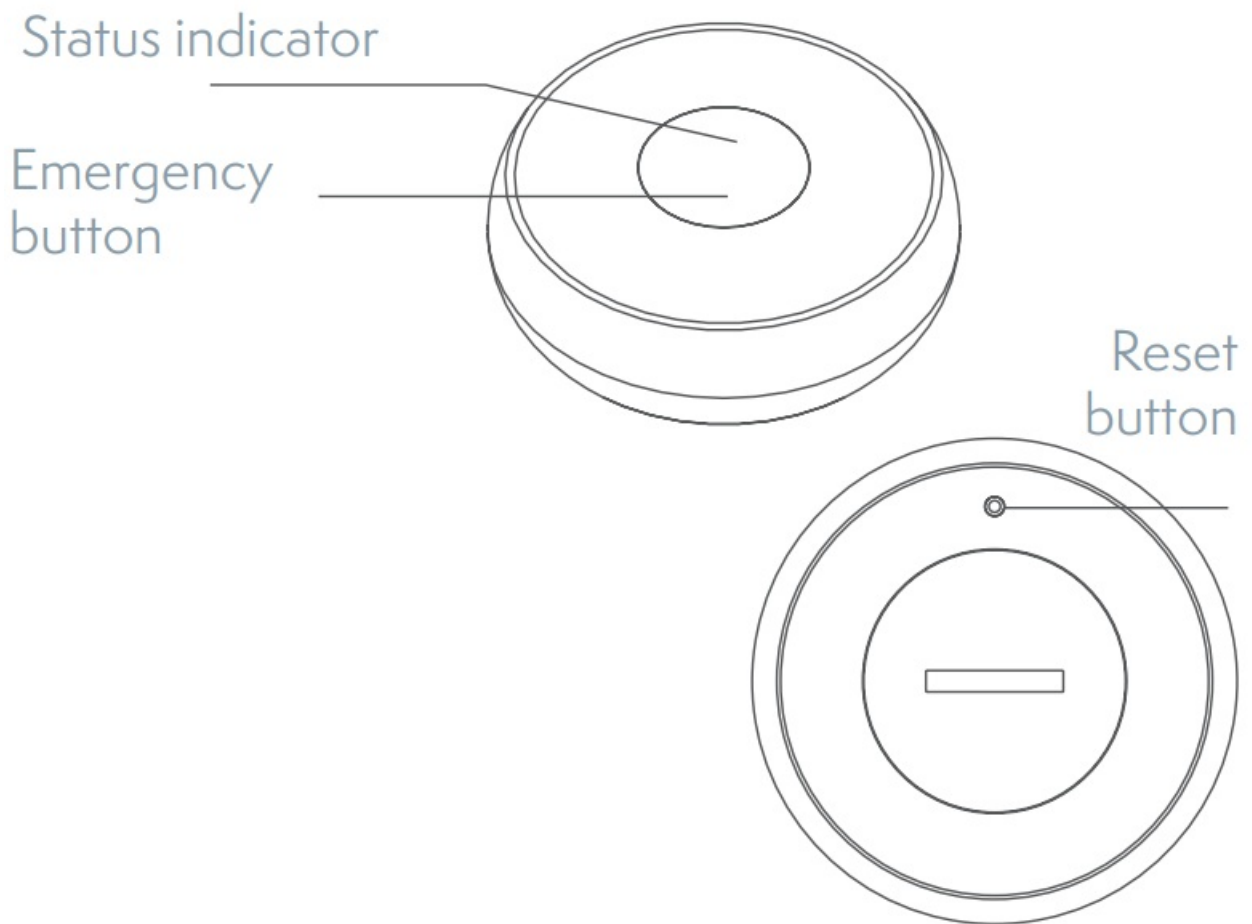


TESLA SMART SENSOR BUTTON USER MANUAL

Contents

- 1 Product Description
- 2 Network Setting
- 3 Network Setting Note:
- 4 Installation Instructions
- 5 Technical Parameters
- 6 INFORMATION ABOUT DISPOSAL AND RECYCLING
- 7 EU DECLARATION OF CONFORMITY
- 8 Documents / Resources
 - 8.1 References
- 9 Related Posts

Product Description

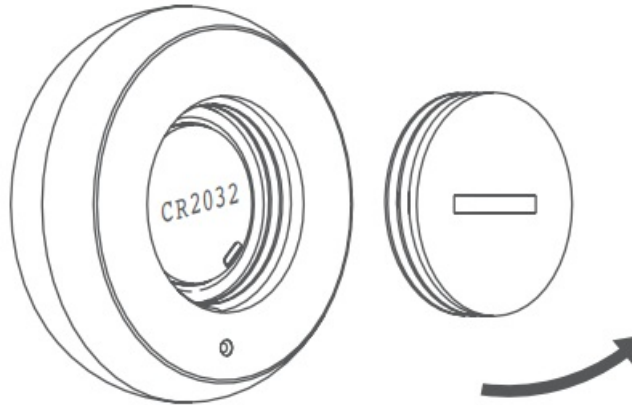


Linkage Setting (Detail please refer to APP)

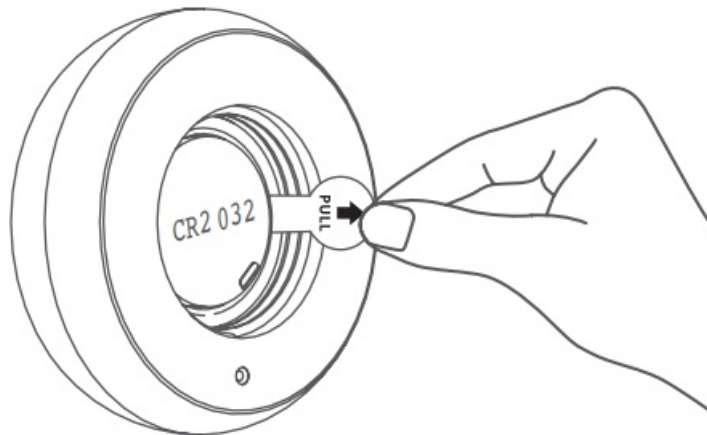
- Single click
- Double click
- Long press (LED off after 3s, release the button)

Network Setting

1. Power on the product.

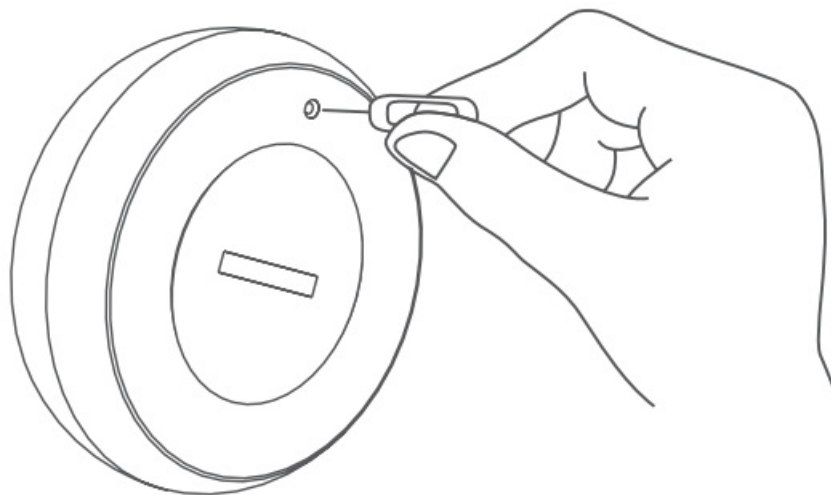


Insert a thin blade or coin into the slot on the battery cover and rotate it anticlockwise to open the battery cover.



Remove the battery insulation film to power on the product and close the battery cover.

2. Press the reset button for 5s and release, the red LED will flash for the network setting. Use a pin to press the button for 5s.



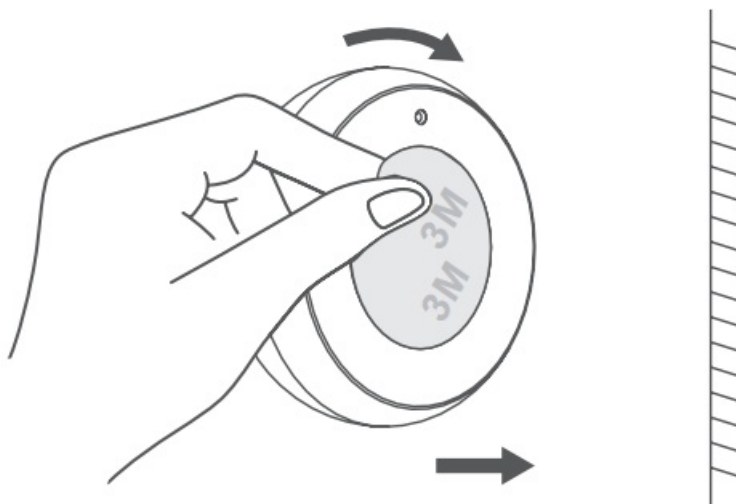
Network Setting Note:

Press the reset button for 5s-10s, the red LED is on for 5s then turns off, release the reset button for network setting. During the network setting, LED keeps on flashing for the 20s. If pressing for more than 10s, the network setting is canceled The red LED will be on for 5s to indicate the network setting succeeds. If fails, the red LED is off.

Installation Instructions



Method 1: Directly place the product in the target position.



Method 2: Remove the protective film from the adhesive and attach the product to the target position.

Technical Parameters

Wireless Technology	ZigBee
Working Voltage	DC 3 V (CR 2032 battery)
Transmission Frequency	2.4 GHz
Working Temperature	-10°C to +55°C
Undervoltage Alarm	supported
Dimensions	Ø50 mm x 16 mm

INFORMATION ABOUT DISPOSAL AND RECYCLING

This product is marked with the symbol for a separate collection. The product must be disposed of in accordance with the regulations for disposal of electrical and electronic equipment (Directive 2012/19/EU on waste electrical and electronic equipment). Disposal together with regular municipal waste is prohibited. Dispose of all electrical and electronic products in accordance with all local and European regulations at the designated collection points

which hold the appropriate authorization and certification in line with the local and legislative regulations. Correct disposal and recycling help to minimize impacts on the environment and human health. Further information regarding disposal can be obtained from the vendor, authorized service center, or local authorities.

EU DECLARATION OF CONFORMITY

Hereby, Witty, s.r.o declares that the radio equipment type TSL-SEN-BUTTON is in compliance with EU directives. The full text of the EU declaration of conformity is available at the following internet address: teslasmart.com/declaration Connectivity: Wi-Fi 2,4 GHz IEEE 802.11b/g/n Frequency band: 2.412 – 2.472 MHz Max. radio-frequency power (EIRP): < 20 dBm



Manufacturer

Tesla Global Limited
Gee Chang Industrial Building,
121 Des Voeux Road Central
852 00 Hong Kong

www.teslasmart.com



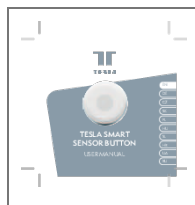
TESLA SMART SENSOR BUTTON

Manufacturer

Tesla Global Limited
Gee Chang Industrial Building,
121 Des Voeux Road Central
852 00 Hong Kong

www.teslasmart.com

Documents / Resources



[TESLA Smart Sensor Button](#) [pdf] User Manual
Smart Sensor Button, CR2

References

-  [TESLA | Smart home in your hands](#)