



## TESLA Apple Carplay Android Auto HUD Heads Up Display for Model 3 and Model Y Installation Guide

[Home](#) » [Tesla](#) » TESLA Apple Carplay Android Auto HUD Heads Up Display for Model 3 and Model Y Installation Guide



Installation Guide for Tesla Model 3&Y

**Cautions:** Before installation should get the device powered off. After the cable connection has been done, test all the functions then resume the assembly.

We guarantee the quality of this product for 1 year, and we will repair it free of charge if there is a quality problem within 1 year. We are not responsible for product damage beyond the one-year warranty period or man-made reasons. If maintenance is still needed, related fees may be charged.

For details, please visit the official website: [www.verkokappa.com](http://www.verkokappa.com)

After-sale mailbox [joker@verkokappa.com](mailto:joker@verkokappa.com)



Official Website



Google download link

<http://www.verkokappa.com>

<https://drive.google.com/drive/folders/1z4U80RsjxgGkU6UXTK8gE-Fypdusp=sharing>

#### Contents [ [hide](#) ]

- [1 Installation Steps-1](#)
- [2 Installation Steps-2](#)
- [3 Installation Steps-3 Wiring](#)
- [4 Installation Steps-3 Wiring \(Other version\)](#)
- [5 Installation Steps-4 Cable connect and Testing](#)
- [6 Problem Explanation](#)
- [7 Documents / Resources](#)
  - [7.1 References](#)
- [8 Related Posts](#)

## Installation Steps-1

### Removing the trim cover and center dash cover

PLEASE TURN OFF THE POWER BEFORE STARTING THE INSTALLATION.  
REMOVE THE DASHBOARD TRIM COVERS ON THE LEFT AND RIGHT SIDES



REMOVE THE DASHBOARD COVER SLIGHTLY FROM ONE SIDE TO ANOTHER SIDE PICK UP THE COVER CAREFULLY

[WWW.VERKOKAPPA.COM](http://WWW.VERKOKAPPA.COM)

## Installation Steps-2

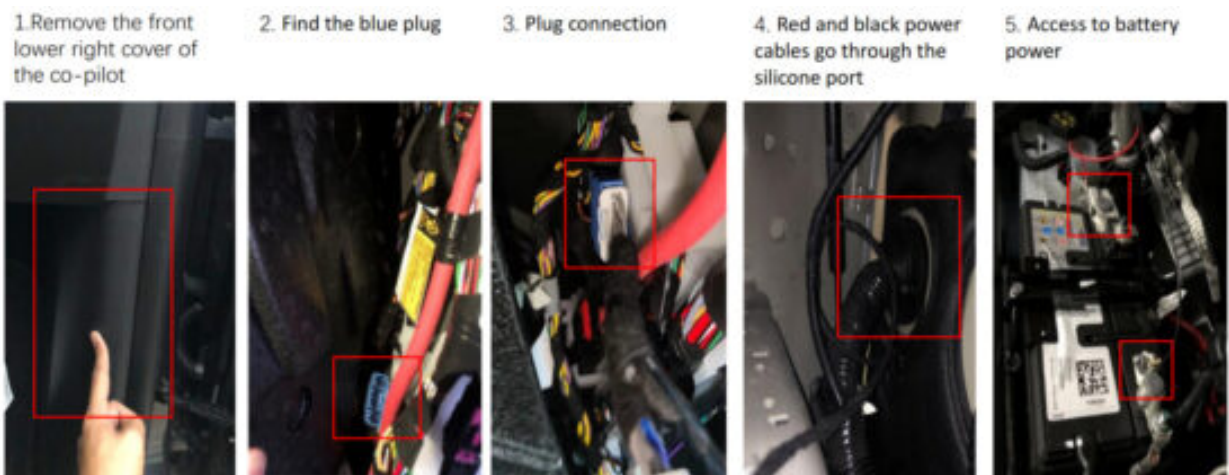
Install T3 Unit

1. PICK UP THE T3 FROM PACKAGE, AND INSERT THE CABLES FROM THE T3 INTO THE 37/38TH HOLE ON THE COVER.
2. UT THE T3 IN TO THE BOARD WITH RIGHT POSITION, AND INSTALL THE FIX STEAL IN BACK SIDE OF THE COVER
3. CHOOSE DIFFERENT INSTALLATION CABLES ACCORDING TO THE VERSION



### Installation Steps-3 Wiring

(Performance & 2022 AMD Ryzen Versions)

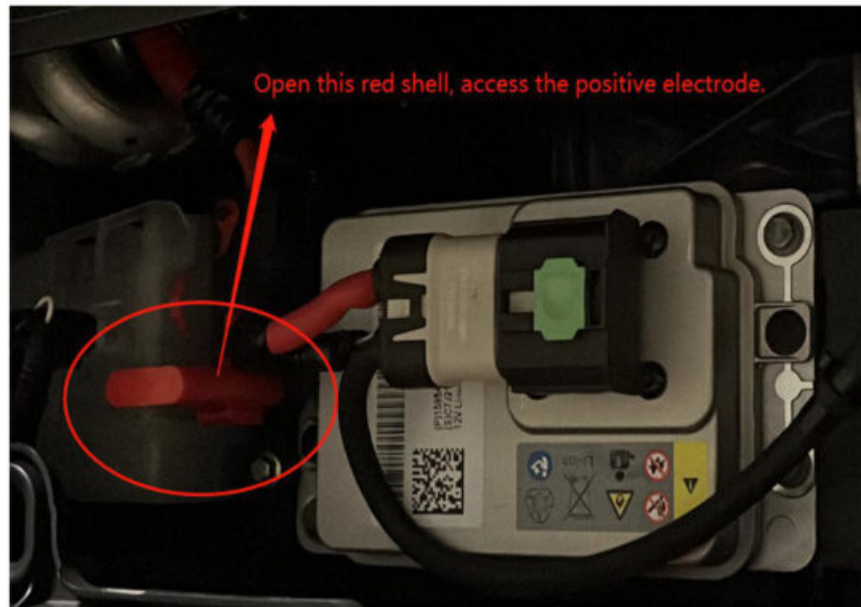


### Tesla 2022 New lithium 12v batteries install manual

Steps-3 Wiring — 5. Access to battery power

Different Steps:

1. Open this red shell, access the positive electrode. You'll need to use engineering tape to hold the positive electrode in place. Or find a professional car installer to install it.
2. You can ground the negative terminal to something metal on the frame.



### Installation Steps-3 Wiring (Other version)

REMOVE THE BUCKLES FROM THE GLOVE BOX, REMOVE THE GLOVE BOX COVER, PULL OFF THE GREY COLOR PLUG, CONNECT THE CABLE WHICH T3 PROVIDED WITH THE GREY COLOR PLUG THEN CONNECT THE ORIGINAL PLUG IN THE OTHER SIDE OF THE T3 CABLE  
ROUTING THE CABLE ACCORDING TO THE POSITION SHOWN. USE TAPE TO FIX THE CABLE



### Installation Steps-4 Cable connect and Testing

CONNECT THE CABLES WITH THE T3, POWER ON TO TEST THE FUNCTIONS. AND THEN PUT BACK THE COVER ON DASH. COVER THE LEFT AND RIGHT SIDE COVERS, INSTALLATION IS COMPLETE



### Problem Explanation


Dear customer Thank you for purchasing our product. Based on some customer feedback, we make explanations.

1. Speed Display(Km/h and mP/h): Our unit is to synchronize the information of the original tesla car screen. Tesla's original car screen can be set to Mile. Restart when finished. Our units automatically sync information.Because the car is not running, the data will not be synchronized. Run the car and he will automatically switch to MPH.Tesla original car screen: Controls->Display->Distance.
2. Wifi Settings: Does not support wifi settings, the manual has not been updated, sorry.  
The wifi settings are mainly to support China's carlife software (similar to carpaly and Android auto functions). The US version removes this functionality.
3. Car Speaker Output: You need to set the Tesla home screen Bluetooth link to the product to realize the sound output through the car system.  
Mobile Phone — HUD — Tesla screen, all Bluetooth links.Tesla screen Bluetooth Search "BT-TSLA". Mobile Phone Bluetooth Search "BT-LINK".
4. Black Screen After Installation
  - ①.restart again.
  - ②.Is your Tesla a performance version? If so, a different installation cable is required.
  - ③. Will the big screen of Tesla's original car light up after you install it? If it does not light up, the socket may not be inserted properly.
  - ④.**Note:** The OBD interface must be connected and unplugged within 1 minute. If the interface is unplugged from the OBD for a long time, the system will detect it.  
Due to the protection mechanism, the Tesla big screen will be black after connecting, which may cause the loss of the original car data. You can call Tesla's after-sales phone for background repair, or wait for 4-5 hours for the vehicle to be repaired automatically.
5. Does it support right-hand drive?  
Answer: Support
6. Upgrade: The new version has been released on the official website.Please confirm that the downloaded version is higher before upgrading (MCU version).  
Upgrade Step:
  - ①. Your U disk format needs to be FAT32.
  - ②. Place the upgrade file in the root directory.
  - ③. Insert the U disk.
  - ④. Restart this unit.
  - ⑤. Click "Select Box/Start" to start the upgrade.
  - ⑥. Wait for the upgrade to complete, restart is complete, and pull out the U disk.
  - ⑦. Delete the upgrade file, copy another upgrade file, and repeat steps 2-6.
  - ⑧. DoneDetailed information, you can view the documentation and demo video.

Official website --- Help:



## Documents / Resources

	<p><a href="#">TESLA Apple Carplay Android Auto HUD Heads Up Display for Model 3 and Model Y</a> [pdf] Installation Guide Apple Carplay Android Auto HUD Heads Up Display for Model 3 and Model Y, Apple Carplay A ndroid Auto HUD Heads Up Display</p>
---	---

## References

- [🌐 verkokappa tesla head up display – VERKOKAPPA](#)