

TE⚡ STUDIO

**H86 Refresh
Rear Smart
Entertainment
Screen
Android
Edition**



TES STUDIO H86 Refresh Rear Smart Entertainment Screen Android Edition Installation Guide

[Home](#) » [TES STUDIO](#) » TES STUDIO H86 Refresh Rear Smart Entertainment Screen Android Edition Installation Guide 

Contents

- [1 TES STUDIO H86 Refresh Rear Smart Entertainment Screen Android Edition](#)
- [2 Product Usage Instructions](#)
- [3 Frequently Asked Questions](#)
- [4 Parts List](#)
- [5 Product selling point](#)
- [6 Features](#)
- [7 Function Introduction](#)
- [8 Feature Introduction](#)
- [9 Installation Guide](#)
- [10 Troubleshooting](#)
- [11 Documents / Resources](#)
 - [11.1 References](#)

TE⚡ STUDIO

TES STUDIO H86 Refresh Rear Smart Entertainment Screen Android Edition



Specifications:

- **Model:** 3Y Refresh Rear Smart Entertainment Screen H86 Android
- **Screen Size:** 8.66 inches
- **Resolution:** 1280*800P
- **Operating System:** Android 12
- **Storage:** 64GB
- **CPU:** 8 core high-performance

Product Usage Instructions

Installation:

This product is designed for special car models and allows non-destructive installation without affecting the original car's functions. Carefully follow the installation instructions provided.

Main Features:

- Rear air conditioning control
- Large air product left and right adjustment
- Main passenger massage
- Front and rear seat heating control
- Wireless Carplay
- OTA upgrade capability

Functionality:

The product offers various functions including rear air conditioning control, seat heating adjustments, wireless Bluetooth connectivity, OTA upgrades, and more. Explore the product features and functionalities for a seamless

experience.

Frequently Asked Questions

Q: Is this product compatible with all car models?

A: No, this product is designed for specific car models and is not supported before the 2019 models. It is suitable for Model 3 and Model Y vehicles manufactured in 2019 or later.

Q: Can I adjust the air vents on the rear entertainment screen?

A: Yes, the left and right air vents are adjustable on the rear entertainment screen for personalized airflow control.

Q: How do I control the music playback on the screen?

A: You can control music playback by using the icons on the screen to switch songs, adjust volume, play/pause, and view music, videos, and pictures from a USB drive.

Parts List



Use the USB adapter according to your own usage

1. Rear entertainment screen
2. Main strand
3. Emergency plug
4. TYPE-C Revolution USB female adapter

Tools required for installation

Plastic warping board, T20 sleeve screwdriver, threading tape, tape

Second, installation precautions

Tip: In order to install more quickly, please be sure to read the instructions carefully.

Model 3Y New version of the rear intelligent screen H86 Android version disclaimer and precautions

Warnings and Disclaimers

Important notice: Welcome to purchase the company's products, in order to protect the legitimate rights and interests of users, in this special reminder users, please be sure to carefully read and fully understand the terms of this statement before using this product. If you use this product, your use behavior will be regarded as the acceptance of the entire content of this statement, and agree to accept the following terms of this statement, or be the car men or this are., and bear the effect caused by non-standard use of the payment. Hanxiao Company reserves the right to update the above documents. Please be sure to follow the instructions to operate this product.

Precautions for use

1. Check whether the product list is complete and damaged before installation.

Please refer to the actual situation, it may be slightly different from the actual operation. If there is any difference,

2. **Warning:** Do not disassemble any parts by yourself, any improper operation is not covered by the warranty.
3. install the product first watch the installation video frequency and instructions.
4. before the product installation test light, please confirm the installation and wiring is correct.
5. check whether the installed product function is normal, if there is a problem, please check whether the plug is inserted tightly.
6. check whether the function of the original car is normal, if there is a problem, please check whether the plug is inserted tightly.

Product selling point

Model 3Y Refresh Rear Smart Screen H86 Android Edition – Product selling point



8.66 "HD fitted screen

Rear air conditioning control

High performance operating system

Front and rear seat heating controls

Open the glove box with one click

Main passenger massage

Wireless Carplay

Passenger seat adjustment

APP App Menu

Wireless Blue teeth

Air outlet left and right adjustment

OTA Upgrade

Model Year: Model 3/ModelY(19+)

Name: Model 3/Y Refresh Rear Smart Entertainment Screen H 86
Android

Product Features

1. **installation:** special car, non-destructive installation, does not affect the function of the original car
2. **experience:** Android 12 high-performance operating system, 8.66 inch rear row maximum HD fully fitted screen 1280*800P,car and machine integration
3. **Function:** Rear air conditioning control + large air product left and right adjustment, main passenger massage, front and rear seat heating control, passenger seat adjustment, built-in Carplay, negative ion air purification, anti-play child lock, APP app menu, one-button open glove box, one-button lock screen, music/video playback, wireless WIFI, OTA upgrade, automatic sensor off screen, built-in speaker

Product Description

1. Special car, non-destructive installation, does not destroy the original car wiring harness and function.
2. Android 12 high-performance operating system, combined with the car, to achieve the integration of the car

machine, 8.66 inch HD fully fitted screen

3. Rear air conditioning control (air conditioning switch, air volume, temperature adjustment) + large outlet around adjustment;

Massage the main passenger seat (only applicable to the original car with waist support, click the icon position to achieve: first gear, second gear, off), front and rear seat heating control (three-gear mode/independent adjustment of a single seat/a key to close), passenger seat adjustment (click the corresponding adjustment icon, backrest adjustment up and down, seat adjustment before and after); Built-in Carplay supports Apple Carplay + Android auto, and the mobile phone is interconnected with the rear seat system; Wireless Bluetooth (connected to the original car Bluetooth to use the original car audio, built-in speaker); Negative ion air purification: After opening, the polluted air in the car can be neutralized. Anti-play child lock: other functions of the screen can not be operated, equivalent to the lock screen function, click once to open, click once to close, child lock password 8687); APP application menu: After connecting WIFI, play online videos and music in the APP application menu, you can also download the APP in need; Open the glove box with one click; One-click lock screen; Play the music and video inside the U disk, you can control the volume of the main screen through the back row, up and down music, play pause; Automatically turn off the screen (when no one sits in the back row, the screen will turn off automatically for 5 minutes, through the gravity sensor of the seat of the original car, the setting page has the switch option, the screen will be bright after the sensor function is turned off, and the screen saver state will be performed if no operation is performed within 5 minutes), support OTA upgrade

Note: Not supported before 19, suitable for 19 after the model (standard with two wiring harness RWD)

Features

Model 3Y Refresh Rear Smart Screen H86 Android Version – Features



The left and right air vents are adjustable



Extra large air outlet

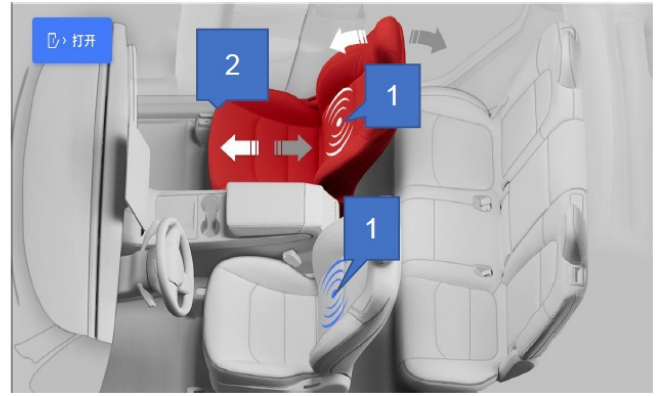
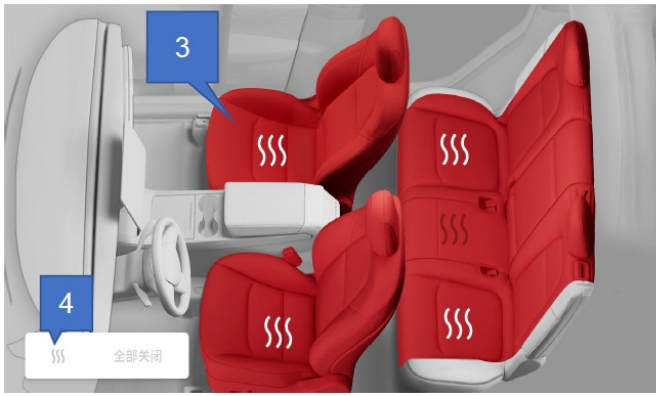
Super large 8.66 HD super large screen
Bring shocking visual experience



8 core high-performance CPU
4G+64G super large storage

Function Introduction

Model 3Y Refresh New rear smart screen H86 Android version – function introduction



Click on the seat to control

1. the main passenger massage function (only applicable to the original car with waist support) (Click the icon position to achieve: first gear, second gear, close)
2. the co-pilot adjust the seat back up and down, the seat front and rear
3. front and back 5 seat heating three-gear adjustment (can be adjusted independently)
4. All seat heating is turned off

Note: The adjustment state is displayed in red when selecting it

Feature Introduction

Model 3Y Refresh Rear Smart Screen H86 Android version – Feature introduction

Air conditioning interface

1. One click on and off option
2. wind speed size adjustment
3. temperature adjustment section



1. the original car music playback switch up and down song, play,pause
2. adjust the volume
3. One click silence



U disk of music, video, picture view play switch up and down song, play, pause

Model 3Y Refresh New rear smart screen H86 Android version – function introduction



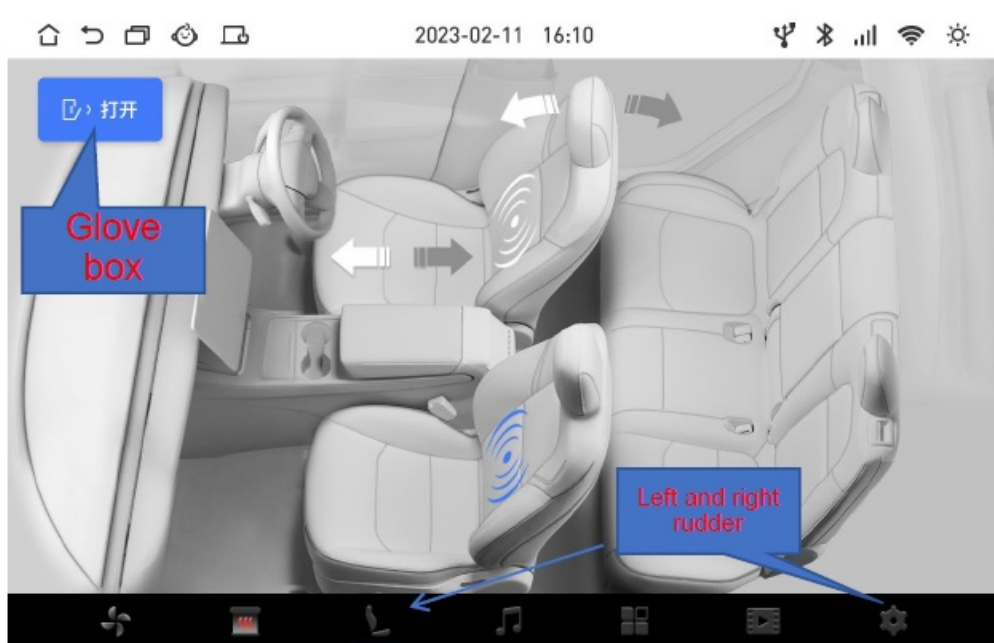
Convenient features

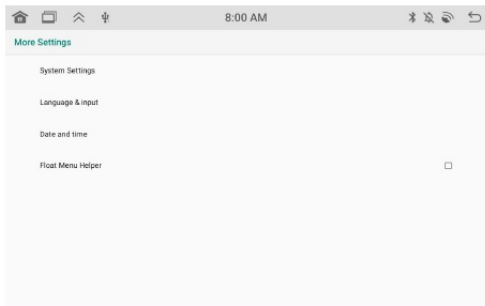
1. open the anti-play lock, enter the password 8687 after the other functions of the screen can not be operated, equivalent to the lock screen function, unlock the same operation
2. synchronize the original car screen, quick open: keep, dog, camping mode
3. one click to close the screen, pull down the direction on the screen to hide the OSD, short press in the upper right corner to turn off the screen, long press for screenshot function
4. negative ion air purification function



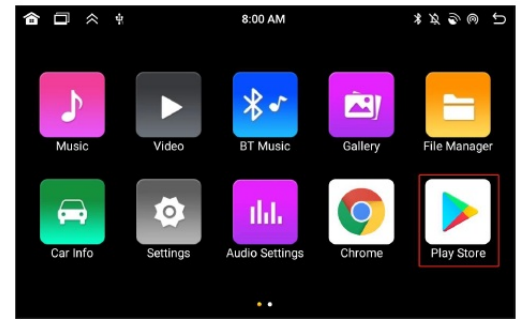
Convenient function

1. Click the Settings page to enter the seat display for left or right steering (switch on the Settings page), and adjust the seat massage and passenger seat adjustment in the main picture interface
2. Open the glove box with one click

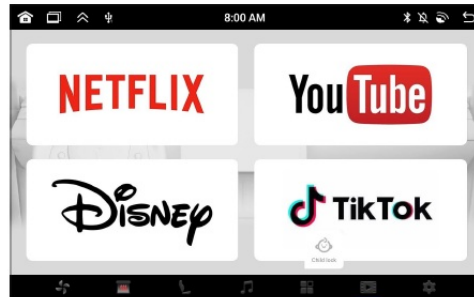




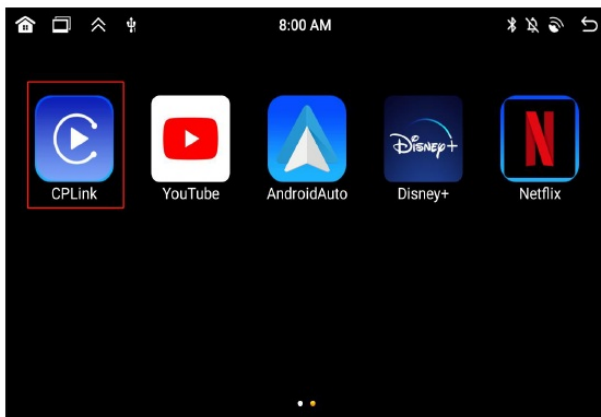
More Settings
 1. System Settings
 2. Language and input
 Date and time
 4. Floating Menu Assistant
 (etc.)



Application interface
 Massive APP selection on demand

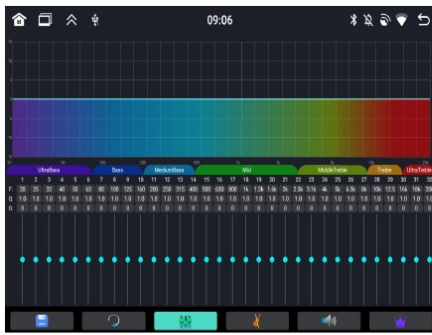


Entertainment direct, with default
 application APP



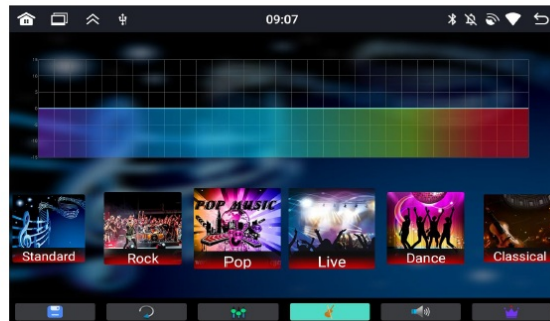
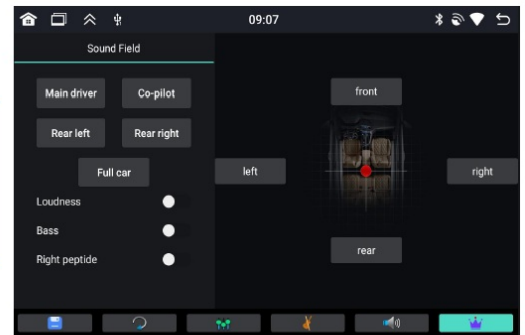
CarPlay Connection Help

1. Open the Android interface 2 Tap CPL ink to enter the Carplay connection interface.
2. Turn on the Bluetooth of the mobile phone, search for the Bluetooth name "Android Bluedroid" on the device to connect with the host.
3. Carplay click the Settings icon in the lower right corner, turn on the auto connection, the second time will automatically connect your phone



Audio Settings

1. Open the Android screen 1 Tap Audio Settings to access the audio Settings screen.
2. In the column below the audio, there is the corresponding sound effect adjustment function, which can be adjusted according to your own needs
3. after connecting the original car audio adjustment can also have a certain effect



Model 3Y New version of the rear intelligent screen H86 Android version – Function introduction

Type-c interface functions

- **Left:** Type-c is the data interface
- **Right:** Type-c is the 15W fast charge interface



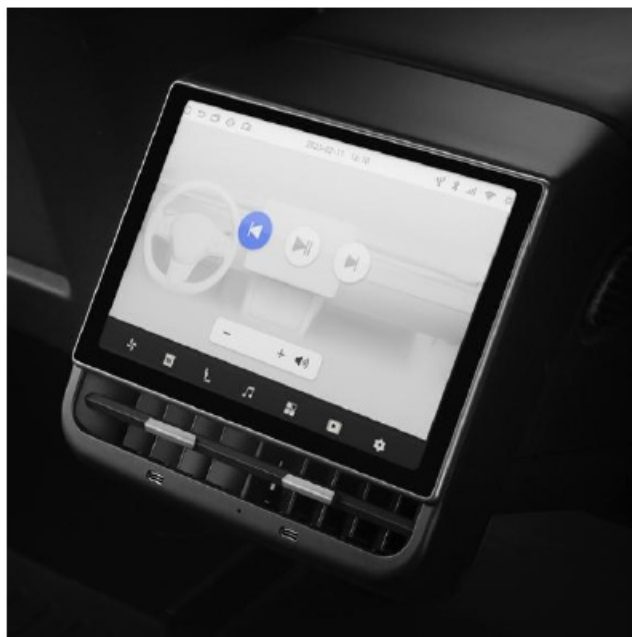
Settings page

1. model choice left rudder, right rudder
2. temperature unit switch
3. time format switch



Sound output mode

1. built-in speaker (not connected to the original car priority output sound)
2. Open the screen menu, click software Bluetooth emission, search for software Bluetooth on the rear screen in the Bluetooth of the car screen, click pairing, and the sound can be output from the original car speaker



Installation Guide

Model 3Y New rear intelligent screen H86 Android version installation guide

1. Remove the cover of the original rear air conditioning trim plate



2. Pull out the plug of the charging module and insert the emergency plug into the plug of the charging module



3. Remove the anti-kick plate at the bottom of the saddle with a tool



4. Unscrew the two fixing screws



5. Remove the middle trim plate of the air conditioning outlet



6. Pry open the passenger triangle trim



7. Use the warping board to lift the passenger rectangular trim board



8. Pry open the fixing fastener of the side pedal trim plate, remove the side pedal trim plate and take it out



9. Pull down the passenger's side door size



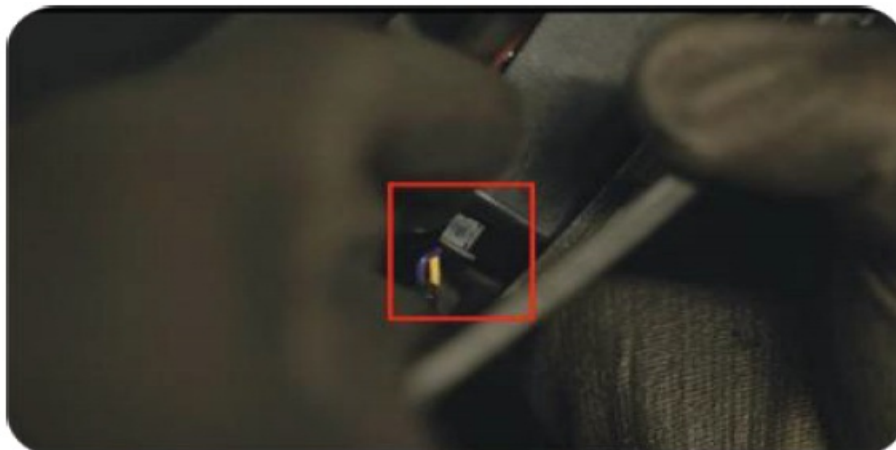
10. the plug in the red circle needs to be docked for the electrical plug of the product, the square inside for the signal, only need to plug in, the other end is left out



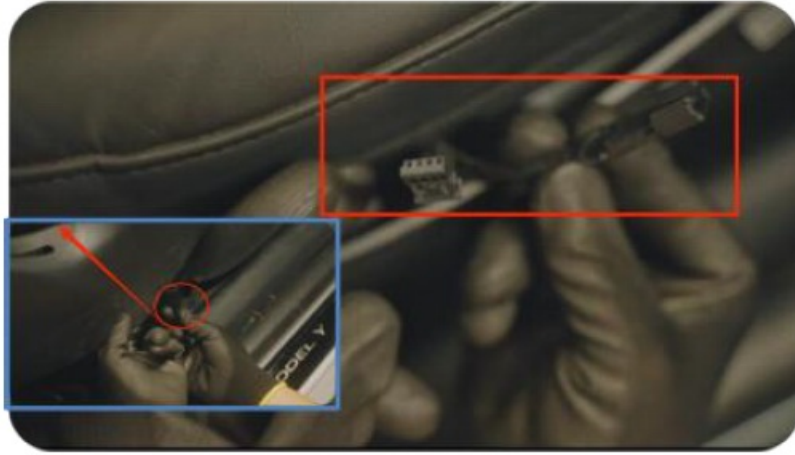
11. Use tools to pry open the seat trim



12. Unplug the seat adjustment plug from the original car



13. Thread the harness over the seat adjustment plug



14. Connect with the seat adjustment plug of the original car



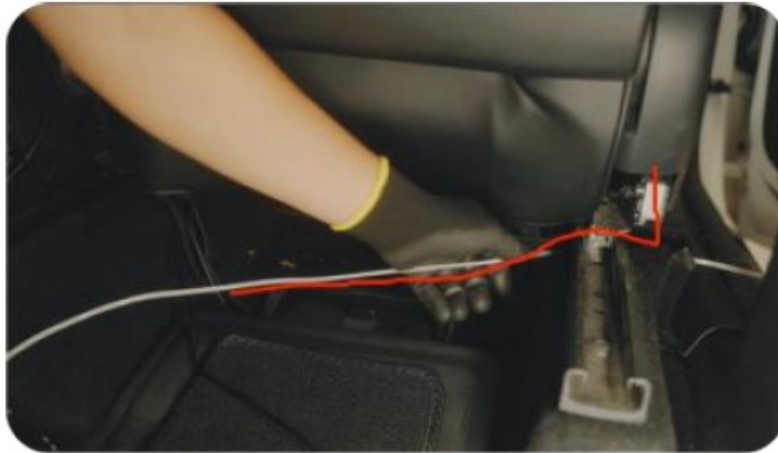
15. Insert another adapter plug into the original car seat adjustment socket (the main driver seat adjustment adapter cable is the same)



16. Align it with the seat and press it back



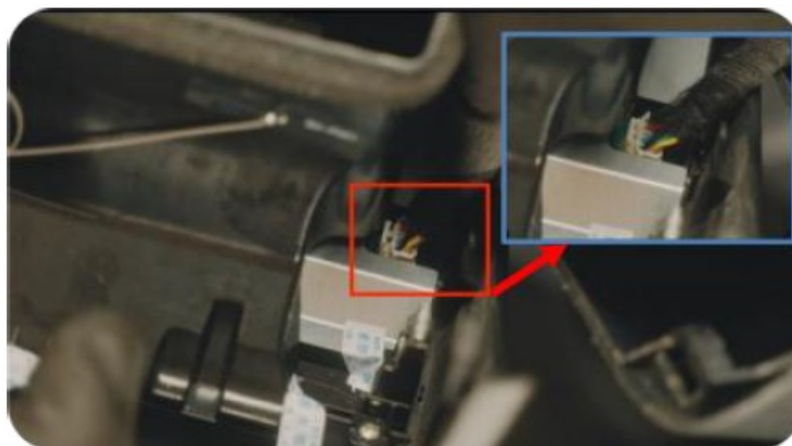
17. Thread the wiring harness under the seat from the seat adjustment position



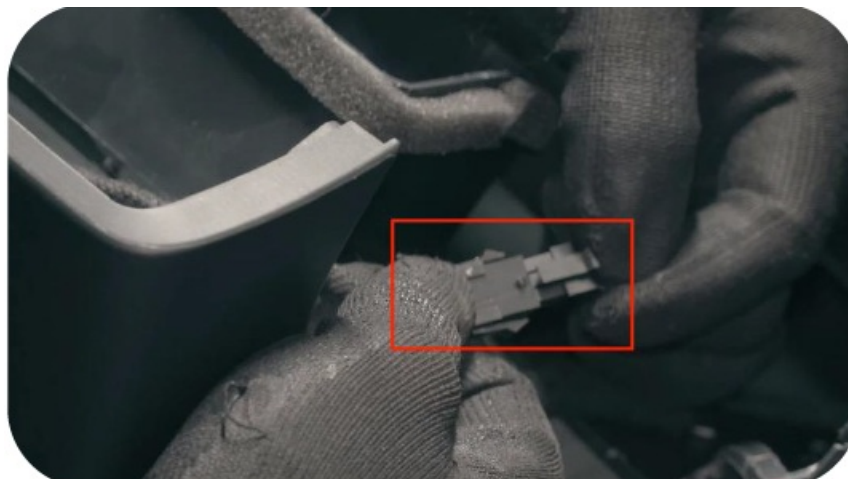
18. After wrapping the tape around the passenger seat adjustment adapter, use the threading tool to thread the cable along the bottom groove of the seat



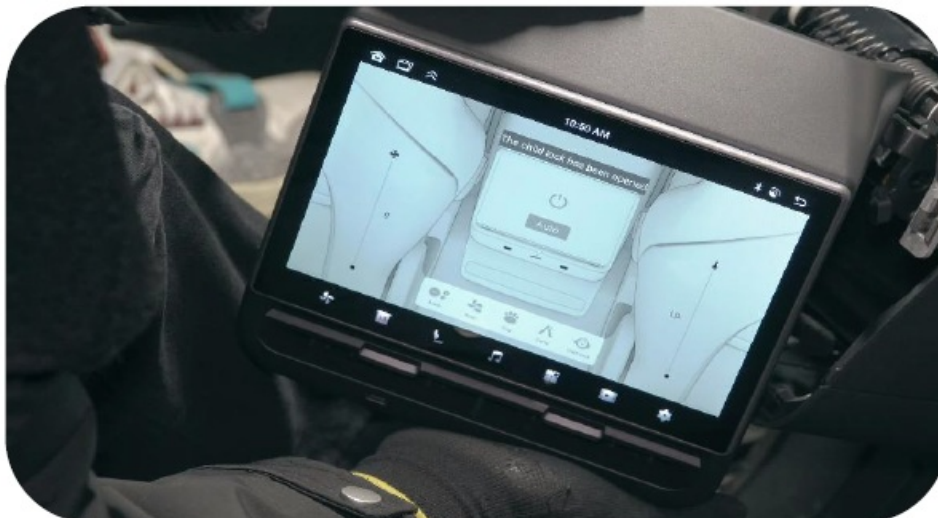
19. Insert the power plug into the screen socket



20. Plug in the power harness



21. Check whether the screen functions are normal (see installation video for details)



22. the screen card can be back (installation need to first buckle the screen below the buckle above, you can watch the installation video to operate)




Troubleshooting

Model 3Y New rear smart screen H86 Android version – Troubleshooting guide for common problems

| Breakdown | Causes | Solutions |
|--|--|--|
| Black screen (screen is not bright when installed) | The adapter harness is not connected properly | Re-plug and unplug |
| | After the host plug is unplugged, it is not replugged within 5 minutes | Connect the wiring harness, lock the car for 2 hours, keep the mobile phone and remote control key, more than 20 meters away from the car, check whether the screen can be lit after 2 hours |
| The Bluetooth cannot be connected | There is no connection to the corresponding host Bluetooth | Search for the correct blue tooth |
| The passenger seat won't adjust | The seat harness is unplugged | Reattach the harness |
| Air conditioning in the rear without air discharge | The air conditioner screen is closed | Click to turn on the air conditioner and adjust the wind speed |
| No sound is emitted | Maybe the Bluetooth isn't connected | Reconnect the main engine to the blue tooth, then restart the main engine of the original car |
| The screen function does not operate | Open the play-proof child lock | In the top right corner of the screen, swipe to hide the SOD and close the play-proof child lock |
| Unable to read the USB flash drive information | The USB flash drive is plugged into the wrong port | The left side is the read data interface, and the right side is the fast charge interface |
| The screen cannot be opened after the screen is turned off | Not in the right way | |

Documents / Resources

| | |
|---|---|
|  | <p>TES STUDIO H86 Refresh Rear Smart Entertainment Screen Android Edition [pdf] Installation Guide</p> <p>H86, H86 Refresh Rear Smart Entertainment Screen Android Edition, H86, Refresh Rear Smart Entertainment Screen Android Edition, Smart Entertainment Screen Android Edition, Entertainment Screen Android Edition, Android Edition, Edition</p> |
|---|---|

References

- [User Manual](#)

[Manuals+](#), [Privacy Policy](#)

This website is an independent publication and is neither affiliated with nor endorsed by any of the trademark owners. The "Bluetooth®" word mark and logos are registered trademarks owned by Bluetooth SIG, Inc. The "Wi-Fi®" word mark and logos are registered trademarks owned by the Wi-Fi Alliance. Any use of these marks on this website does not imply any affiliation with or endorsement.