



## Contents [ [hide](#) ]

- 1 Tersway TW-RA01 Smart Tower Scent Diffuser
- 2 Product Information
- 3 Product Usage Instructions
- 4 INTRODUCTION
- 5 PRODUCT INFORMATION
- 6 PACKAGING ACCESSORIES
- 7 INSTALLATION
- 8 BUTTON CONTROL
- 9 APP CONTROL BLUETOOTH MODE
- 10 REMOTE CONTROL
- 11 MAINTENANCE AND UPKEEP
- 12 REPLACE THE ATOMIZER CORE
- 13 WARRANTY POLICY
- 14 SAFETY PRECAUTIONS FOR USE
- 15 FCC Statement
- 16 Frequently Asked Questions
- 17 Documents / Resources
  - 17.1 References

# Tersway

## Tersway TW-RA01 Smart Tower Scent Diffuser



## Product Information

### Specifications

- **Compliance:** Part 15 of the FCC Rules
- **Conditions:** Must not cause harmful interference, must accept any received interference
- **Approval:** Changes or modifications not approved may void the user's authority to operate

## Product Usage Instructions

### Installation

1. Place the device on a stable surface.
2. Connect the device to a power source using the provided cable.
3. Turn on the device by pressing the power button.

### Operation

1. Ensure the device is within the recommended operating conditions.
2. Use the controls to navigate through different settings.
3. Follow the user manual for specific functions and features.

**Maintenance**

- 1. Clean the device regularly with a soft, dry cloth.
- 2. Avoid exposing the device to extreme temperatures or humidity.
- 3. Keep the device away from water and liquids.

**INTRODUCTION**

- The device is easy to operate and offers three control modes: button control, remote control, and app control. Please read the instructions carefully and follow them.

**PRODUCT INFORMATION**

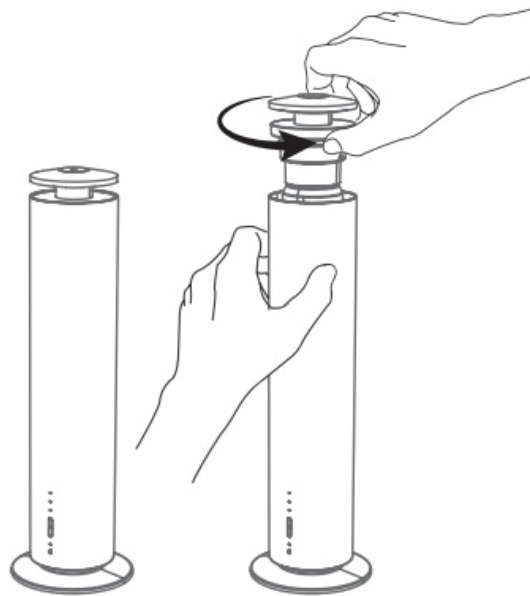
Size: 290×85×85mm	Weight: 700g	Power: 5W
Voltage: Type-5V	Capacity: 120ml	Coverage: 200m <sup>3</sup>

**PACKAGING ACCESSORIES**

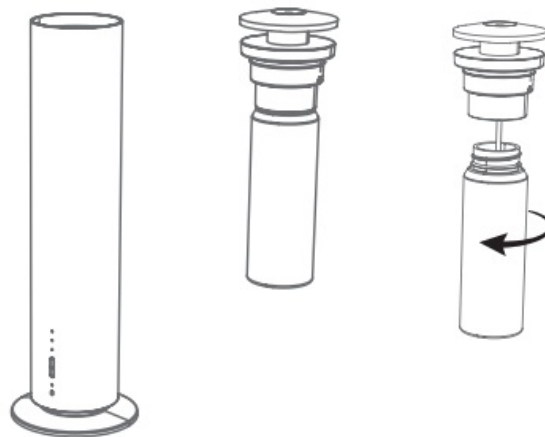
- **Scent Diffuser** X1,
- **Power adapter** X1,
- **Atomiser core** X1,
- **Remote Controller** X1,
- **User Manual** X1

**INSTALLATION**

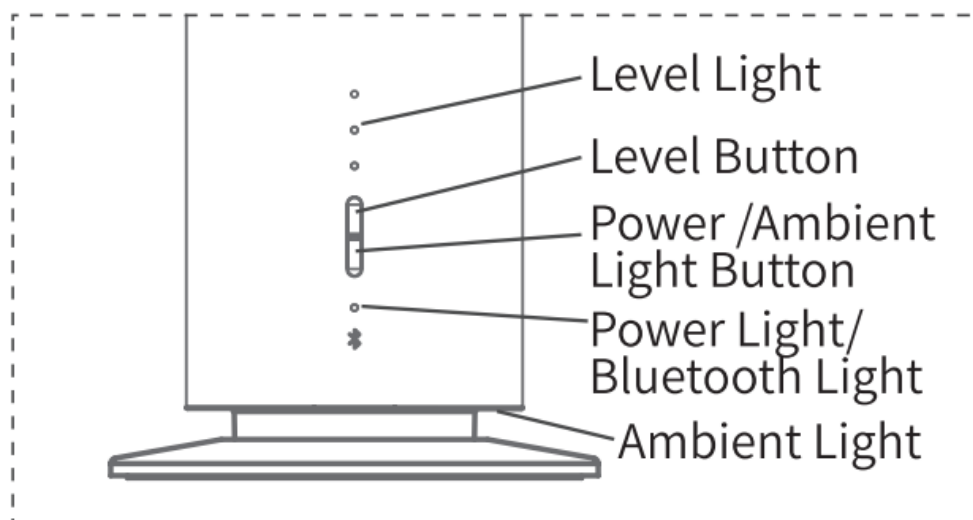
- 1. Hold the main body of the device and grasp the atomiser head (to which the essential oil bottle is attached). Rotate the atomiser head counterclockwise by 30 °, then lift it upward to remove the atomiser head.



2. Squeeze the atomiser head and rotate the bottle counterclockwise to detach it. After filling the bottle with essential oil, reassemble all components back onto the device and tighten them securely.



## BUTTON CONTROL



**Power Button/Ambient Light Button:**

- Long-press the “Power Button” for 2 seconds to turn on and enter working mode; long-press again to turn off the device.
- Briefly press the “Power Button” to cycle through ambient light colours: “White Light,” “Yellow Light,” “Blue Light,” and “Off” in sequence.

**Battery Indicator Light:**

Light Status	Charging Display Description
Red Flashing	Low Battery
Red Steady On	Charging
Green Steady On	Fully Charged

**Level Button**

- Press the “Concentration” button to cycle through the levels.
- With the corresponding level of light illuminating.

Level	Level Light	On/Off Duration
Level 1	1 white light on	On for 16s, Off for 300s, 24-hour cycle
Level 2	2 white lights on	On for 16s, Off for 180s, 24-hour cycle
Level 3	3 white lights on	On for 16s, Off for 60s, 24-hour cycle

**Factory Reset**

- Press and hold the Level Button for s seconds to reset to factory settings, the 3 level lights will flash 3 times, and the device will emit 3 “beep” sounds; the default level is: Level 2, working in a 24-hour cycle.
- **Note:** When the device receives signals from the remote control or Bluetooth, the battery indicator light flashes blue twice as a prompt, and the device emits a “beep-beep” sound. When a button is pressed, the device emits a single “beep” as confirmation.
- After Bluetooth is connected, the battery indicator light turns blue to indicate the Bluetooth connection status, while the gear indicator lights turn off (the device





operates in the Bluetooth-set working mode instead of the gear-based mode).

## APP CONTROL BLUETOOTH MODE

- After Bluetooth connection, the device immediately switches to Bluetooth mode and operates according to the Bluetooth settings:
- Scan the QR code with your phone to download and install the “Art] Diffuser” APP → Go to the page → Select “Start Adding” → Go to the “Search and Connect” page, search for and connect to the device.
- **Note:** It is recommended to allow all APP permissions, including location services, Bluetooth connection, and sending notifications.
- **All devices:** Available devices within the phone’s Bluetooth range are displayed in the “All Devices” group, click on any device icon to connect to that device, after successful connection, it will jump to the device details page.
- **My Devices:** Devices that have been connected are displayed in the “My Devices” group; devices not currently within Bluetooth range are shown in grey.



### Device Status Page:

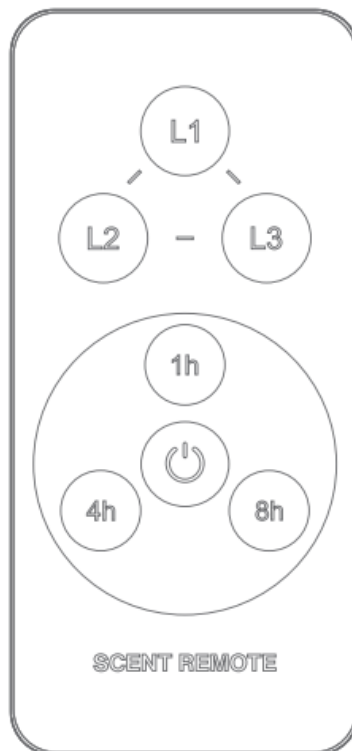
-  **Ambient Light:** The ambient light can be turned on/off with one tap via the smartphone.
-  **Colour Switching:** Change the colour of the ambient light.
-  **Toggle:** The phone can turn the device’s operating status on/off with one click.
-  **Factory Reset:** The phone can reset to factory settings with one click.
- **Working Mode:** Click “Add” to create up to 5 working modes, and click the switch button in the upper right corner of the mode window to turn the mode on/off, long press the mode window to select delete mode, click the mode window to customize and edit days of the week, periods, and frequency.
- **Day Setting:** Select the desired days.
- **Period Setting** | Adjust the dial to select the working period.
- **Note:** If the period needs to cross 00:00, it must be set as two consecutive periods

(the end time cannot be less than the start time), for example, 23:00-02:00, set as two groups: 23:00-23:59, 00:00-02:00.

- **Frequency Setting:** Adjust the dial to select the working frequency.
- **Operating time range:** ~30 seconds; Pause time range: 60~500 seconds.

## REMOTE CONTROL

- Pair the remote control with the device.
- Turn off the device, hold down the remote's standby button, then press and hold the device's "Power Button" for 2 seconds to turn on, to complete pairing with the specified device.
- The remote control can set three concentration levels, three timer levels, and on/off:
- **Level Button** | Press any L1/L2/L3 level button to switch working levels, with on/off duration the same as the button mode described above.
- **Timer Button** | Press the "1h/4h/8h" button to set the working time to 1h/4h/8h, the device will stop working after reaching the set time; if the remote sets the working level without timer setting, the device will default to a 24-hour cycle.



### Toggle Start/Standby.

- **Note:** The device's working mode is based on the last action (button, remote, Bluetooth); for example, after Bluetooth disconnection, the device continues to work in Bluetooth mode.

## MAINTENANCE AND UPKEEP

- Scent diffusers require regular cleaning and maintenance every 1-2 months when in normal use. Below is the method for cleaning.

### Spray nozzle cleaning:

- Use 95% alcohol + cotton swab to gently wipe the nozzle, removing the residue of essential oil liquefaction
- The atomiser core can be cleaned by soaking a cotton swab in 95% alcohol and wiping the core with it, or by soaking the atomiser core in alcohol and then allowing it to dry.

### Oil bottle cleaning:

- Before changing essential oils each time, clean the oil bottle with alcohol and allow it to dry completely.
- When equipment is not used for a long period, it is necessary to clean the internal nozzles and other components thoroughly.
- Add 95% industrial alcohol to the empty bottle.
- Turn on the device and run it for 10-15 minutes.
- Turn off the device, pour out the alcohol from the bottle and let it dry before reassembling the device.
- Power off storage, unplug the power supply, to prevent electrostatic damage to the circuit.

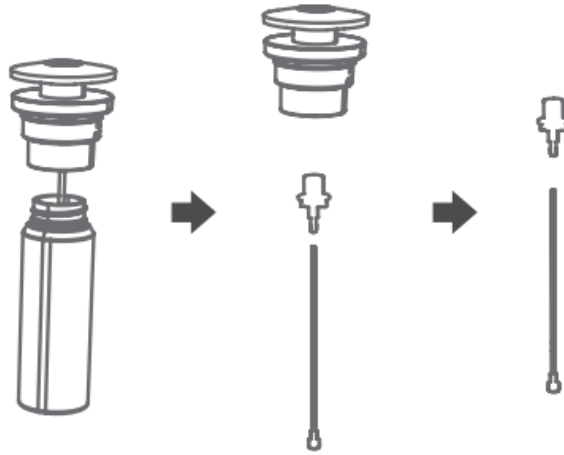
## REPLACE THE ATOMIZER CORE

- The atomizer head assembly is divided into: atomizer head, essential oil bottle, oil suction tube, filter and atomizer core.
- **Operation steps:** First, unscrew the essential oil bottle, pull out the oil suction tube, and remove the atomiser cover with a holding tool like tweezers.
- The white part on top is the atomiser core.
- Wipe the essential oil dry with a dry cloth, then pinch the atomiser core and unscrew it



to the right to remove it.

- Next, replace it with a new atomiser core, and then reassemble all parts back into the device.
- **Hint:** Please pay attention to aligning the oil tube with the atomizer core hole inside the atomizer cover when reinserting it, and ensure all components are tightened to prevent detachment.



## WARRANTY POLICY

- Replacement/Maintenance is guaranteed for one year from the date of purchase.
- If you need to replace components for free within the warranty period, the device must be under normal use conditions, and the failure must be due to manufacturing reasons to provide warranty.
- During the warranty period, component fees covered by the warranty are waived. This warranty does not include consumables such as oil.
- To obtain warranty service, please be sure to contact the after-sales department during the warranty period and present the original or copy of the valid warranty card and the official commercial invoice to the relevant departments.

### The following situations do not enjoy free warranty service:

- Damage& problems caused by Accidents & Fire!
- Not used properly and wrong operation.
- Repaired by non-professionals, causing some parts to be damaged.
- Damaged during transportation.
- Without our warranty card.
- Without proper cleaning for a long time.

- The machine is overworked.
- Machines & Parts not from us.
- Machines were not purchased from official channels.
- Send the machines back without a permit from the manufacturer.

## **SAFETY PRECAUTIONS FOR USE**

### **Safe use:**

- After loading the essential oil, the device must always remain upright and facing upwards, not inverted or tilted, otherwise it may damage the internal components of the device.
- During the transportation of the equipment, it is necessary to empty the essential oils from the bottles to avoid oil leakage and damage to the equipment.
- This device cannot be used for air humidification and cannot be filled with water.
- Please place it in a location inaccessible to children and pets.
- Store in a dry and cool place. Do not use this device in high temperatures or humid environments.

### **Forbidden:**

- Do not cover the equipment in use.
- Prohibit the use of overloaded power outlets, power cords, or damaged power plugs, as this may damage equipment or even cause fires.
- Essential oils should not be ingested and should be kept away from contact with the eyes. In case of eye contact, rinse thoroughly with plenty of water; if there is a strong sensation, seek medical attention immediately.
- Please do not disassemble the equipment. If any abnormalities are found in the product, please contact us promptly.

## **FCC Statement**

This device complies with part 15 of the FCC Rules. Operation is subject to the following two conditions:

1. This device may not cause harmful interference,

2. This device must accept any interference received, including interference that may cause undesired operation.

Any Changes or modifications not expressly approved by the party responsible for compliance could void the user's authority to operate the equipment.

**Note:** This equipment has been tested and found to comply with the limits for a Class B digital device, under part 15 of the FCC Rules. These limits are designed to provide reasonable protection against harmful interference in a residential installation. This equipment generates uses and can radiate radio frequency energy and, if not installed and used according to the instructions, may cause harmful interference to radio communications. However, there is no guarantee that interference will not occur in a particular installation. If this equipment does cause harmful interference to radio or television reception, which can be determined by turning the equipment off and on, the user is encouraged to try to correct the interference by one or more of the following measures:

- Reorient or relocate the receiving antenna.
- Increase the separation between the equipment and receiver.
- Connect the equipment to an outlet on a circuit different from that to which the receiver is connected.
- Consult the dealer or an experienced radio/TV technician for help.


## **FCC Radiation Exposure Statement**

The device has been evaluatec to meel general RF exposure requirement. The device can be used in portable exposure condition without restriction.

## **Frequently Asked Questions**

- **Q: What should I do if the device causes interference?**
  - **A:** If the device causes interference, try repositioning it or moving it away from other electronic devices.
- **Q: Can I make modifications to the device?**
  - **A:** No, any changes or modifications not approved may void your authority to operate the equipment.

# Documents / Resources

	<a href="#">Tersway TW-RA01 Smart Tower Scent Diffuser [pdf]</a> User Manual 2BPW3-TW-RA01, 2BPW3TWRA01, tw ra01, TW-RA01 Smart Tower Sc ent Diffuser, TW-RA01, Smart Tower Scent Diffuser, Tower Scent Diffuser, Scent Diffuser, Diffuser
---	---

## References

- [User Manual](#)

📁 Tersway  
🔖 2BPW3-TW-RA01 , 2BPW3TWRA01, diffuser, Scent Diffuser, Smart Tower Scent Diffuser, Tersway, Tower Scent Diffuser, tw ra01, TW-RA01 Smart Tower Scent Diffuser

---

## Leave a comment

Your email address will not be published. Required fields are marked \*

Comment \*

Name

Email

Website

☐ Save my name, email, and website in this browser for the next time I comment.

**Post Comment**

## Search:

e.g. whirlpool wrf535swhz

**Search**

[Manuals+](#) | [Upload](#) | [Deep Search](#) | [Privacy Policy](#) | [@manuals.plus](#) | [YouTube](#)

This website is an independent publication and is neither affiliated with nor endorsed by any of the trademark owners. The "Bluetooth®" word mark and logos are registered trademarks owned by Bluetooth SIG, Inc. The "Wi-Fi®" word mark and logos are registered trademarks owned by the Wi-Fi Alliance. Any use of these marks on this website does not imply any affiliation with or endorsement.