



terraillon Webcoach Easyview User Manual

[Home](#) » [Terraillon](#) » terraillon Webcoach Easyview User Manual 

Contents

- 1 terraillon Webcoach Easyview
- 2 Made for
- 3 SAFETY INFORMATION
- 4 OVERVIEW
- 5 INITIAL START-UP
- 6 START MEASURING
- 7 WELLNESS COACH APP
- 8 MAINTENANCE
- 9 SCREEN EASY VIEW
- 10 WARRANTY & ENVIRONMENT PROTECTION
- 11 DISCOVER THE TERRAILLON CONNECTED PRODUCTS
- 12 Documents / Resources
 - 12.1 References
- 13 Related Posts



terraillon Webcoach Easyview



Made for

- iPhone® 4S/5/5C/5S/6/6Plus
- iPod® Touch 5th generation
- iPad® 3/4/Air
- iPad® Mini
- Android 4.3
- Bluetooth Smart 4.0 / Bluetooth Smart Ready



iPhone is registered trademark of Apple Inc. Android is a trademark of Google Inc. The Bluetooth® word mark and logos are registered trademarks owned by Bluetooth SIG, Inc. Other trademarks and trade names are those of their respective owners

Thank you very much for selecting the Terraillon Glass Body Fat Analyzer WEB COACH EASY VIEW.

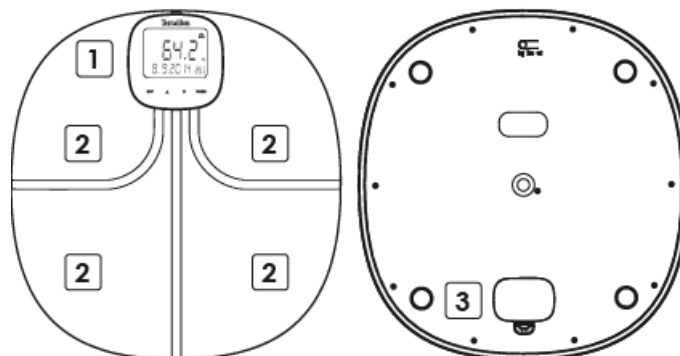
SAFETY INFORMATION

Don't use this product if you wear a pacemaker or implantable electronic device Any information provided by this device is in no way meant to treat, cure or prevent any disease or illness from happening.

FIND MORE INFORMATION ON

<http://www.terraillon.com>

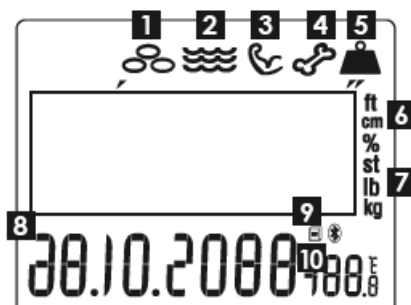
OVERVIEW



1. Removable LCD screen
2. Electrodes
3. Battery compartment

INITIAL START-UP

1. Insert batteries in the scale (3xAAA) and in the screen (3xAAA)



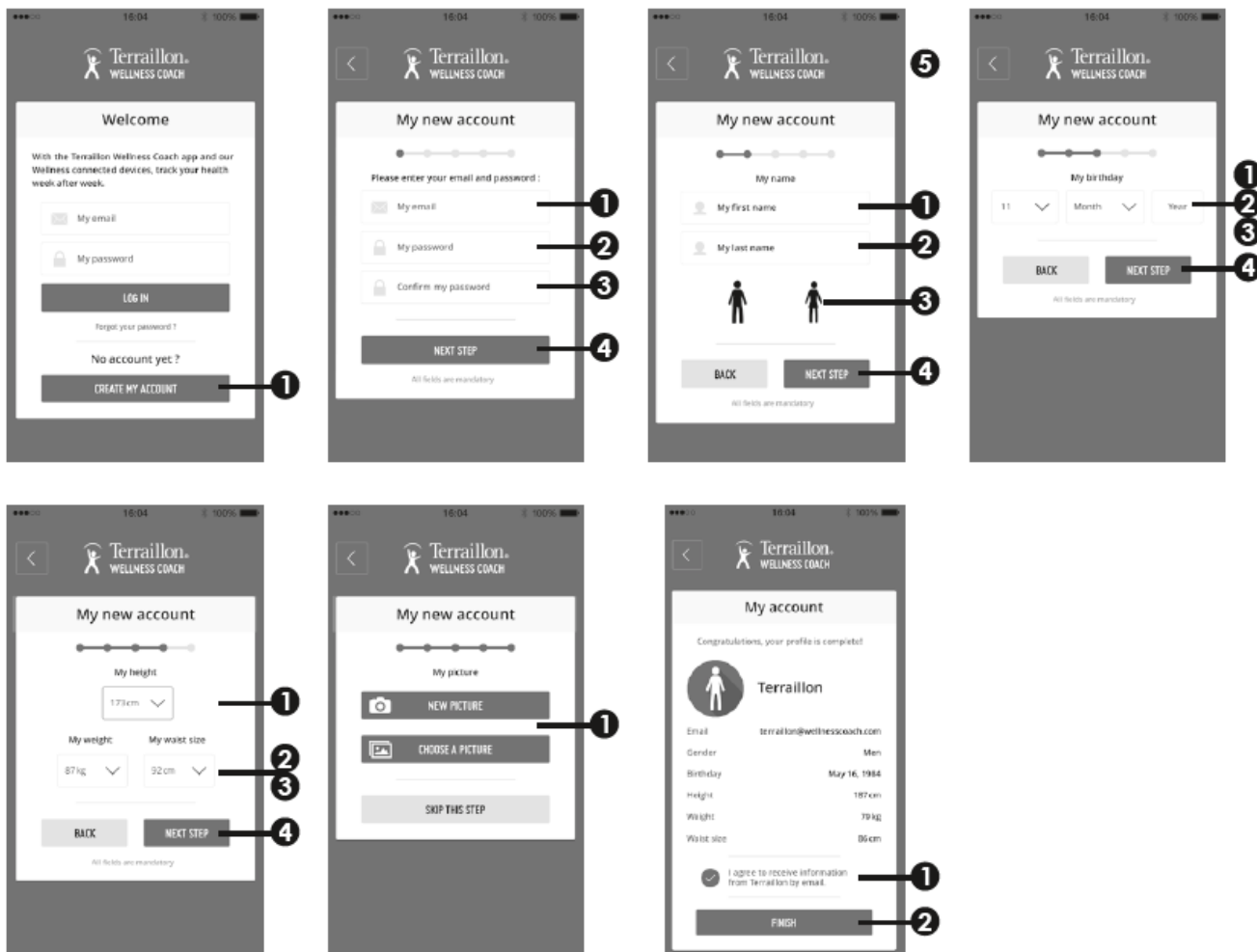
1. Body Fat (%)
 2. Body water (%)
 3. Muscle mass (kg)
 4. Bone mass (kg)
 5. Weight
 6. Height
 7. Weight
 8. Date
 9. Data transfer & Bluetooth
 10. Temperature
2. Press “ ▲▼ ” button to change the numeral then press “SET” button to confirm.
 1. After confirming [DATE], [KG/LB/ST], [°C/°F] and [TIME] the LCD will display all the information
 2. Press “MODE” button 3 sec to change the settings and use “ ▲▼ ” and “SET” to change them
 3. Press “MODE” to use the TIMER function(1/Countdown timer; 2/Toothbrush timer; 3/Shower timer)



4. Download the Terraillon Wellness Coach App

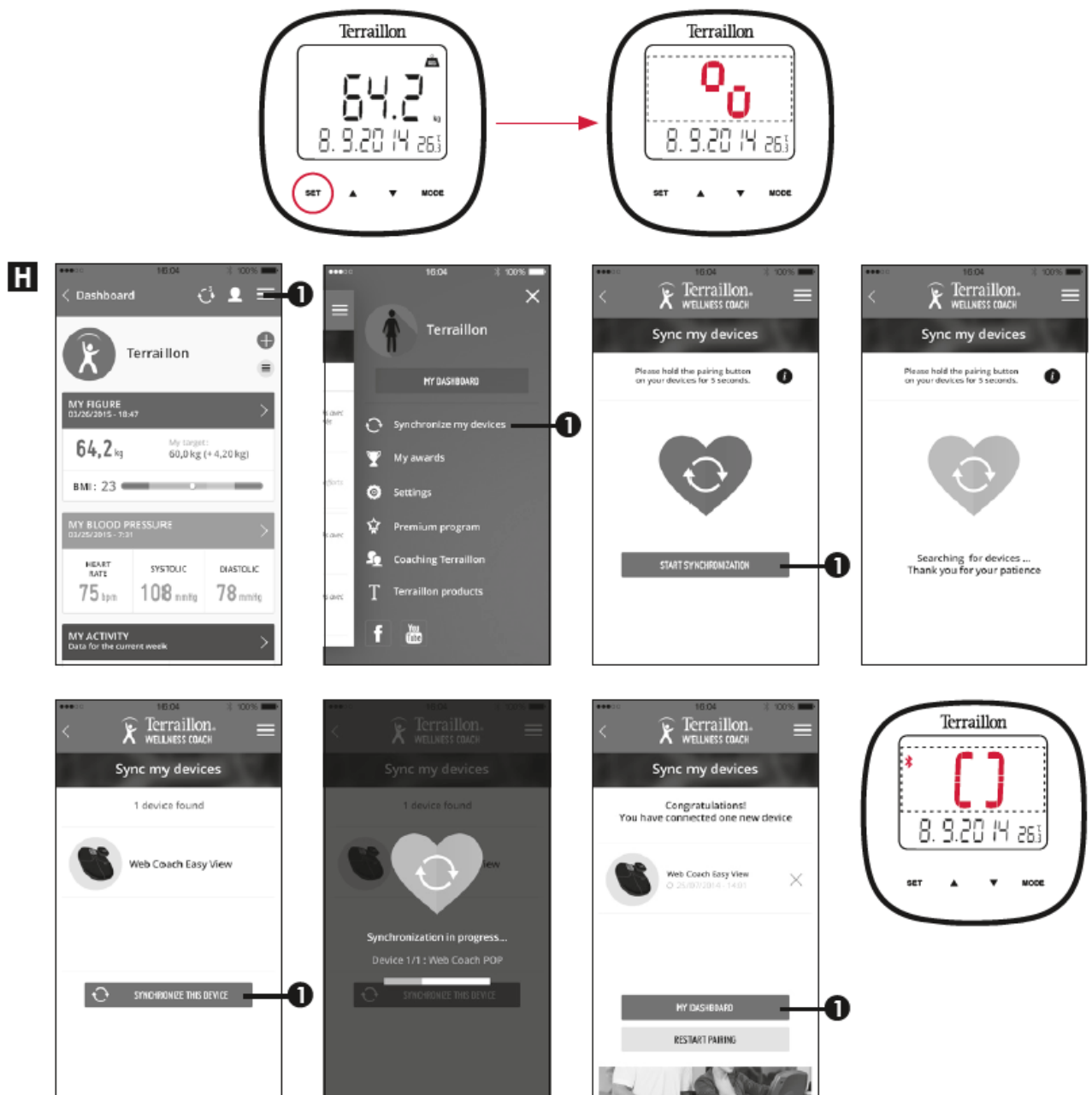


5. Create an account



6. Turn on Bluetooth on your Smartphone (Setting > Bluetooth > ON)


7. Hold 3sec "SET" button on the screen to start pair-up



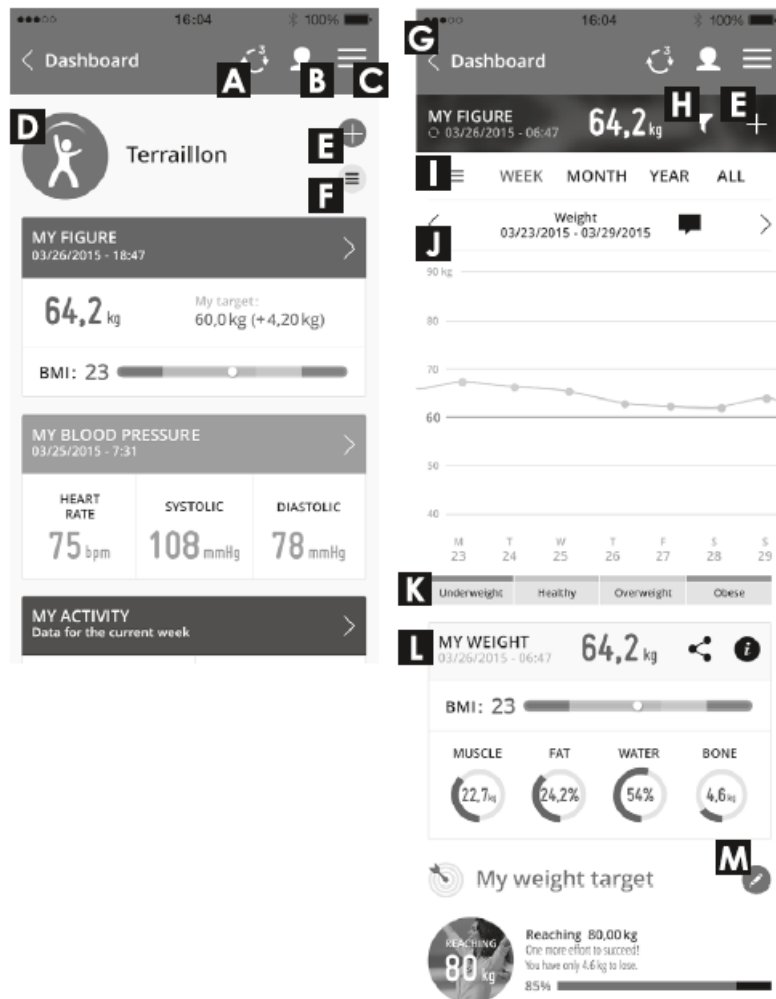
8. After synchronization occurs, the application will ask you to associate your profiles from the app with a profile number from the scale (from 1 to 8). After associating a profile number, it is important to select the profile number on the screen of the scale before first weighing (see next page).

START MEASURING

Before your first weighing, it is necessary to choose a profile. Touch the SET Key, press up or down key to choose the profile Pn, and press SET to confirm. If you weigh yourself and your weight has changed more or less 2 kg compared to your previous weighing, please remember to select your profile before you weigh

1. The scale will automatically switch on as you step on the platform barefooted. Stand still and keep full contact with the electrodes until the LED stops blinking 
2. Data ready to transmit to the App: If SUCCEED, the symbol disappears; If FAIL, the symbol Remains
3. The symbol Remains, successful Bluetooth Connection

WELLNESS COACH APP



1. Pending data to be synchronized
2. User Management
3. Side menu
4. Current user
5. Add data manually
6. Change the order of widgets
7. Back to dashboard
8. Change displayed data (weight, body composition)
9. Change displayed period (list, week, month)
10. Choose displayed period (from...till...)
11. **BMI level** : underweight (<18), normal (18-25), overweight (25-30), obese (>30)
12. **Weight data** : current weight with last update, current BMI, muscle mass, body fat, body water, bone mass
13. **Target** : add/edit a weight goal, current status vs target

MAINTENANCE

Use water only. DON'T use propellant or other chemicals.

SCREEN EASY VIEW

EEEE

- The product has Overload Instruction.

Lo1

- Low batteries on the weighing platform.

Lo2

- Low batteries on the LCD control terminal.

Err1

- Body fat measurement error

WARRANTY & ENVIRONMENT PROTECTION

This product is guaranteed for 2 years against material and manufacturing defects. During this period, such defects will be repaired free of charge (proof of purchase must be presented if the scale is under warranty). This warranty does not cover damage resulting from accidents, improper use or negligence. If you have a complaint please contact the store where you purchased the scale first. Waste electrical products should not be disposed of with household waste. Please recycle where facilities exist. Check with your local authority or retailer for recycling advice.

DISCOVER THE TERRAILLON CONNECTED PRODUCTS



Web Coach POP



Web Coach One



Acti-T Band



NutriTab



Tensio




TensioScreen



Terraillon UK Ltd 2 The Waterhouse Waterhouse Street – Hemel Hempstead Herts HP1 1ES – UK
Tel: +44 (0)1442 270444 – sales@terraillon.co.uk

Terraillon Corp USA
contact@terraillon.fr

Documents / Resources

	<p>terraillon Webcoach Easyview [pdf] User Manual terraillon, thermomix, webcoach, easyview</p>
---	---

References

-  [Pèse personne, balance connectée, articles de cuisine | Terraillon](#)