



tern Cache Box Solid Frame Bag Instruction Manual

[Home](#) » [tern](#) » tern Cache Box Solid Frame Bag Instruction Manual 

Contents

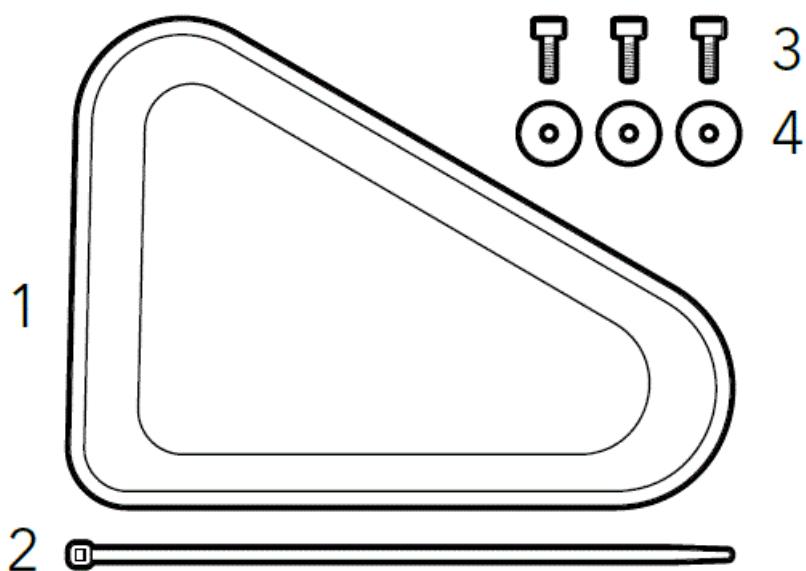
- [1 tern Cache Box Solid Frame Bag](#)
- [2 What's Included](#)
- [3 Dimensions](#)
- [4 Installation](#)
- [5 WARRANTY INFORMATION](#)
- [6 Documents / Resources](#)
 - [6.1 References](#)
- [7 Related Posts](#)



tern Cache Box Solid Frame Bag



What's Included



1. Cache Box
2. Cable Tie
3. M5 x 12 mm Screws (3)
4. M5 Washers (3)

Dimensions

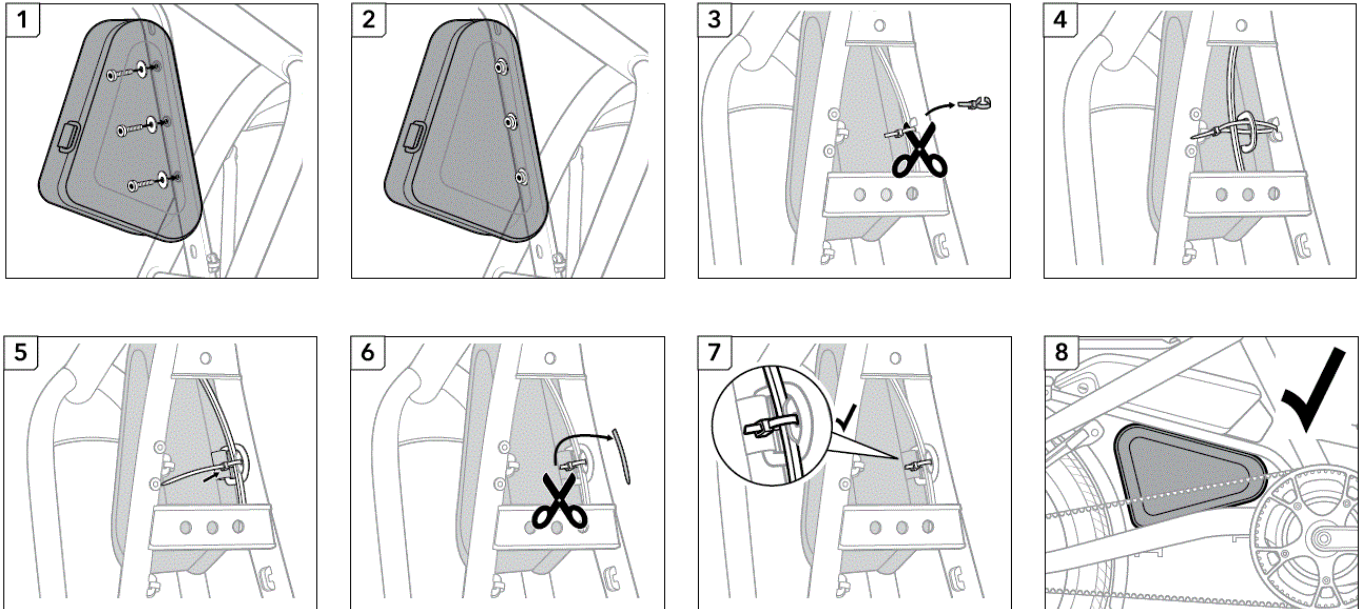
- **Volume:** 1.9 L (116 cu in) carrying capacity

- **Weight:** 2 kg (4.4 lb) maximum load

Installation

Tools required (not included)

- 4 mm Allen Wrench
- Scissors



WARRANTY INFORMATION

LIMITED PRODUCT WARRANTY INFORMATION

This Product comes with a ONE (1) YEAR Limited Warranty from the date of retail purchase by the original end-user. If a material or workmanship defect arises and a valid claim is received within the Warranty Period, this Product will be replaced. Mobility Holdings cannot be held liable for damages to personal property due to misuse or improper care and maintenance. This Product Warranty does not, under any circumstance, cover the replacement or cost of any third party product used with or connected to the Product.

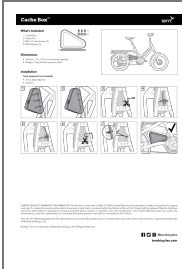
Tern, the Tern Werd (logotype), the Tern Berd (device), and Cache Box used alone or in combination are trade names, trade devices or registered trademarks of Mobility Holdings, Ltd.

© 2022. Tern is a trademark of Mobility Holdings, Ltd. All Rights Reserved.



ternbicycles.com

Documents / Resources



[tern Cache Box Solid Frame Bag](#) [pdf] Instruction Manual
Cache Box Solid Frame Bag, Cache Box, Solid Frame Bag, Frame Bag, Bag

References

-  [Tern Bicycles | Electric Cargo Bikes & Folding Bikes](#)