

TENTBOX®
TentBox
Universal Side
Awning



TentBox Universal Side Awning User Guide

[Home](#) » [TentBox](#) » TentBox Universal Side Awning User Guide 

Contents

- [1 TentBox Universal Side Awning](#)
- [2 Installing Your Brackets](#)
- [3 Documents / Resources](#)
 - [3.1 References](#)
- [4 Related Posts](#)

TENTBOX®

TentBox Universal Side Awning



Specifications: Specifications

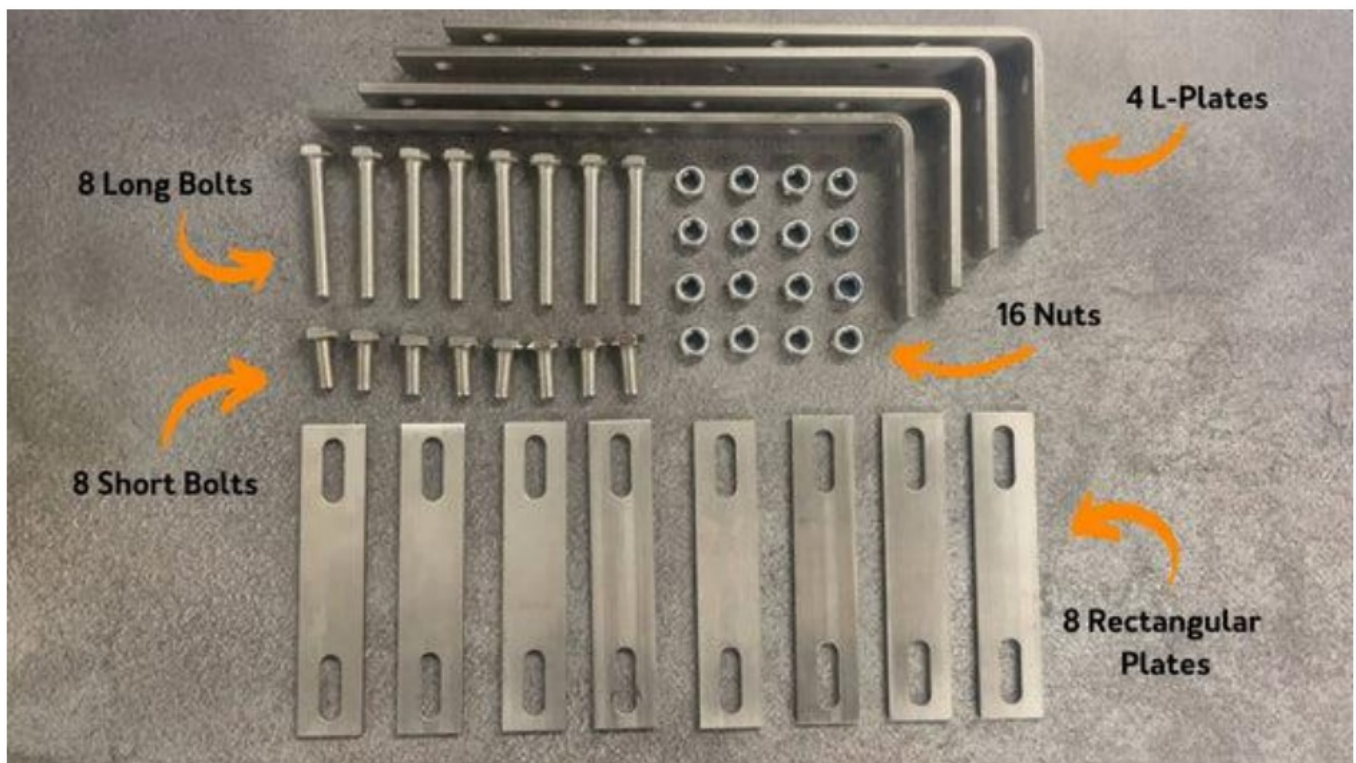
- Product Name: TentBox Side Awning
- Brackets: Universal Awning Brackets or Cargo Awning Brackets (curved or angled)
- Material: Steel
- Weight: Varies based on size and model

TentBox Side Awning Guide

Installing Your Brackets

Universal Awning Brackets

The Universal Awning Brackets include:



The L-Brackets have 4 holes. The holes that you choose will depend on your setup. You need to make sure that there is enough clearance between the edge of your cross bar and the Side Awning once installed.

Installing to cross bars

1. Rest two rectangular plates on top of your cross bar.
2. Drop two long bolts into your chosen holes on 2 of the L-plates, ensuring the short part of the L-plate is facing upwards and the thread of the bolts are facing down.
3. Place the L-plates on top of the rectangular plates resting on your cross bar, with the bolts dropping through the holes on the rectangle plates to join all the parts together.
4. To create the clamp, take two more rectangular plates and place them onto end of the bolts underneath your cross bar, parallel to the rectangular plates above the cross bar.
5. Loosely thread the nuts onto the four bolts by hand to keep the configuration in place.
6. Adjust the position of the configuration to ensure that there is enough clearance between the end of your cross bar and the short part of the L-plate that is facing upwards.
7. Once you are happy with the position, you can tighten the nuts using a spanner until the bracket is securely clamped to your cross bar.
8. Repeat this process on your other cross bar.

Installing to raised roof rails

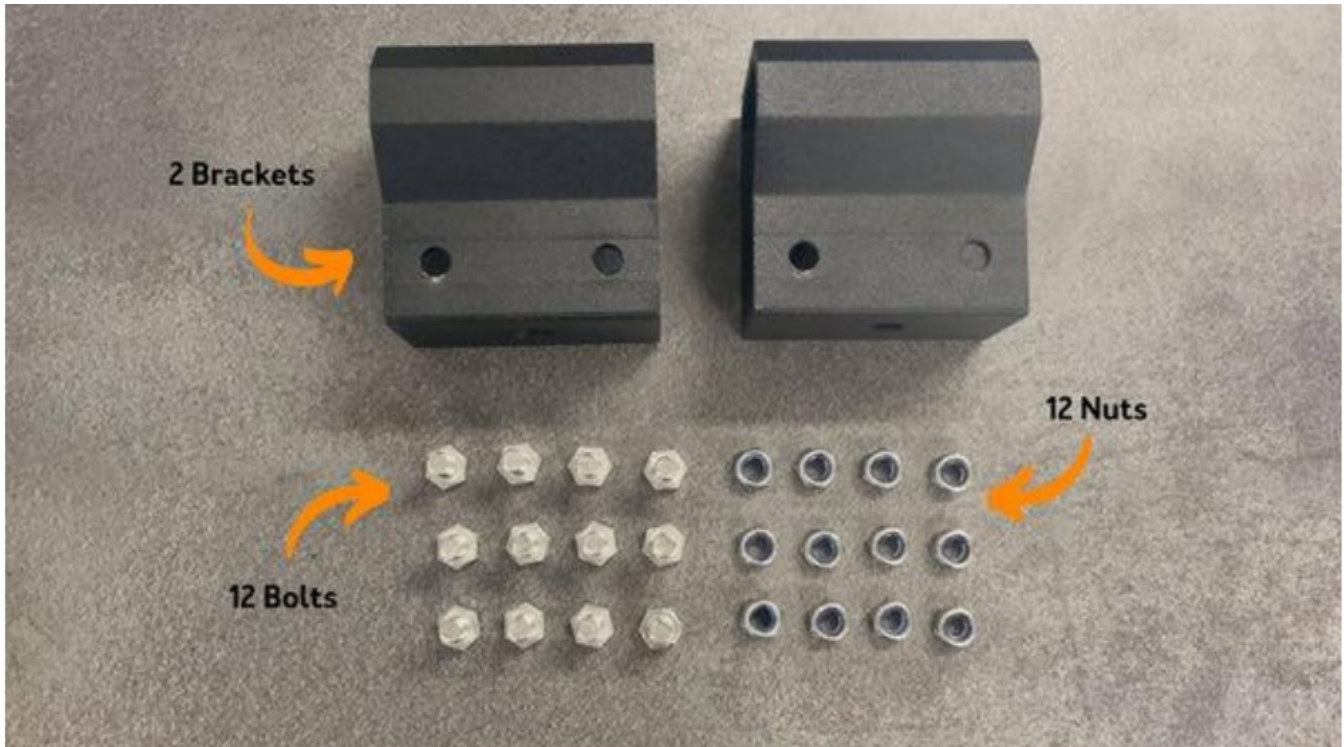
1. Drop two long bolts into your chosen holes on the L-plate, ensuring the short part of the L- plate is facing upwards and the thread of the bolts are facing down
2. Rest the bracket on your roof rail and place one rectangular plate onto one of the bolts. Loosely thread one of the nuts onto this bolt by hand to hold the rectangular plate in place.
3. Bring the rectangular plate underneath the roof rail and slot the other bolt into other hole on the plate. Loosely

thread one of the nuts on by hand to hold the rectangular plate in place.

4. You can then tighten the nuts until the bracket is securely clamped to your roof rail.
5. Repeat this process for the three other L-plates, ensuring they are spread with equal distance along your roof rail to distribute the weight of the Side Awning evenly.

Cargo Awning Brackets

The Cargo Awning Brackets include:



There are two variations of the Cargo Awning Brackets: curved and angled. The type you need will depend on your version of the TentBox Cargo, and you can work this out by looking at the bottom shell to see if it looks curved or angled.

1. Slide four bolts onto the bottom accessory rail on your TentBox Cargo and position them so there are two bolts on either end.
2. Slot the two brackets onto the exposed bolts and slide them along the rail to get them into a good position. We recommend having them around 30cm from either end to ensure the weight of the Side Awning is distributed safely.
3. Once you're happy with the position of the brackets, you can secure them using the nuts provided.

Attaching your Side Awning

1. Slide 4 bolts into the two rails on the back of your Side Awning by bending the rubber cap out of the way.
2. Slide the bolts along the rails so they match up with the position of whichever bracketing system you have installed.
3. Using the help of another person, lift the side awning into place and slot the bolts into the holes on your brackets.
4. Loosely thread the remaining nuts to these bolts by hand to keep the awning in place.
5. Tighten the nuts fully using a spanner until your Side Awning is securely installed.

Setting up your Side Awning

1. Unzip the cover.
2. Roll the side awning out to its full length.
3. Fold down the legs and adjust them to achieve the height you want for your set up.
4. You can loosen the legs by twisting them, pull out to desired length then twist them into opposite position to lock into place.
5. Swing out the arms and extend them to slot into the holes on the end of the side awning.
6. Use the same twisting motion to tight these to their final position.
7. Use the velcro straps to attach the fabric canopy to the extended arms.

Using your Side Awning

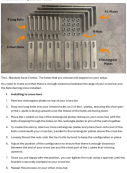
1. Set the awning at an angle if rain is expected.
2. Avoid using the awning in strong winds.
3. Do not leave the awning unattended when in use.

FAQ

Q: How do I choose between curved and angled Cargo Awning Brackets?

A: Determine if your TentBox Cargo bottom shell looks curved or angled. Choose brackets accordingly for proper installation.

Documents / Resources

	<p>TentBox Universal Side Awning [pdf] User Guide Universal Side Awning, Side Awning, Awning</p>
---	--

References

- [User Manual](#)

[Manuals+](#), [Privacy Policy](#)

This website is an independent publication and is neither affiliated with nor endorsed by any of the trademark owners. The "Bluetooth®" word mark and logos are registered trademarks owned by Bluetooth SIG, Inc. The "Wi-Fi®" word mark and logos are registered trademarks owned by the Wi-Fi Alliance. Any use of these marks on this website does not imply any affiliation with or endorsement.