



tenlamp G10 Mixer Portable Audio Console For Live Streaming User Manual

[Home](#) » [tenlamp](#) » tenlamp G10 Mixer Portable Audio Console For Live Streaming User Manual 

Contents

- [1 tenlamp G10 Mixer Portable Audio Console For Live Streaming](#)
- [2 Product Usage Instructions](#)
- [3 Product Overview](#)
- [4 Product Connection Ports](#)
- [5 Panel Functions Introduction](#)
- [6 Connection Guide](#)
- [7 BT Connection](#)
- [8 Custom Mode Settings](#)
- [9 Noise Treatment](#)
- [10 Charging](#)
- [11 Tuning Settings Recommend](#)
- [12 Technical Parameter](#)
- [13 Troubleshooting\(FQA\)](#)
- [14 Documents / Resources](#)
 - [14.1 References](#)
- [15 Related Posts](#)

tenlamp[®]

tenlamp G10 Mixer Portable Audio Console For Live Streaming



Specifications

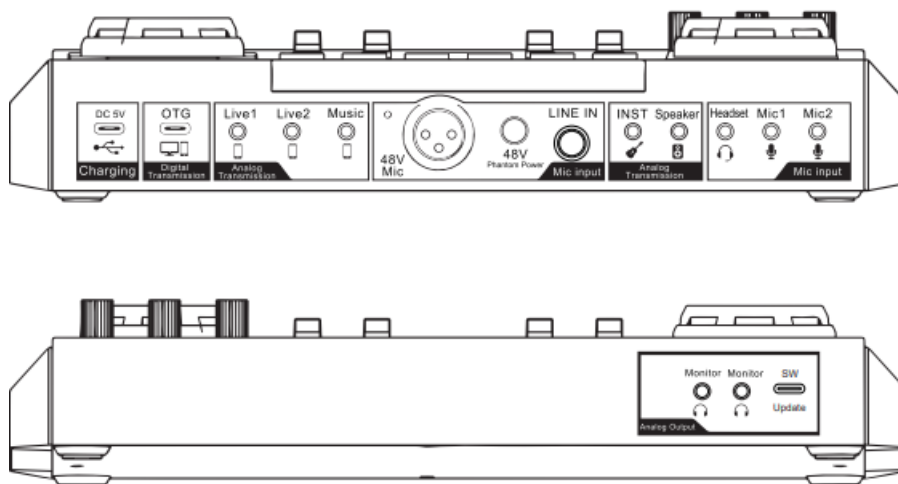
- Product Name: G10 Mixer
- Product Type: Portable Audio Console
- Usage: Live Streaming, Podcast or Recording On Computer & Smartphone

Product Overview

The G10 Mixer is a portable audio console designed for live streaming, podcasting, and recording on computers and smartphones.

It allows users to connect external audio sources, such as microphones and musical instruments, and provides various control functions for adjusting volume, adding effects, and monitoring sound sources.

Product Connection Ports



1. DC 5V Charging port: USB-C port; used for charging the mixer.
2. Music port: 3.5mm music resources input port; connects an external audio source or devices to the mixer via a 3.5mm audio cable to play background music during live streaming or recording. Can be connected to the smartphone headphone jack or PC earphone jack.

3. 48V Mic port: 48V condenser microphone input port; used for connecting 48V phantom powered condenser microphones. The 48Vphantom power switch is located to the right of this port, and the 48V phantom power indicator is in the upper left corner of this port.
4. LINE IN port: 6.35mm dynamic microphone input port; used for connecting dynamic microphones.
5. INST port: 3.5mm TRS input port; used for connecting 3.5mm musical instrument devices.
6. Speaker port: 3.5mm TRS output port; used for connecting audio playback devices like speakers or headphones.
7. Headset port: 3.5mm TRRS port; used for connecting a headphone with a microphone function. It can be used for vocals input via headset and real-time monitoring of all sound sources simultaneously.
8. Mic(1, 2) port: 3.5mm TRS mic port; used for connecting a (XLR to 3.5mm) condenser microphone that does not require external power supply. For 48V microphones, they need to be connected to an external phantom power source, and then use an XLR-3.5mm microphone cable to connect to the audio console.
9. Monitor port: Two 3.5mm monitoring ports; used for monitoring all sound resources of the mixer in real-time.

Panel Functions Introduction

1. Music volume dynamic response light
2. Music knob: Rotate the knob clockwise to adjust the input volume of music from BT, Music jack, USB-C jack.
3. 16 interesting instant trigger sound pads for live streaming atmosphere creation.
4. Play/Pause button: Short press to play/pause accompaniment music (only for BT music accompaniment).
5. Next button: Short press to switch to the next music, long press for 2 seconds to switch to the last music (only for BT).
6. Custom Mode Delete button: Deletes the saved custom mode, can delete all custom modes.
7. Custom Mode Storage button: Saves the current customized voice mode, can save up to 19 custom modes.
8. Voice Changer button: Cyclically switches interesting voice changer modes, including male voice, female voice, baby voice, anduncle voice. Currently, only 4 voice changing modes are set, more may be added in the future.
9. MON button: Turns on/off the function of monitoring microphone audio (input from 48V Mic, LINE IN, Mic1~2, Headset).
10. Reverb Preset button: Cyclically switches preset reverb modes, including original sound mode, KTV mode, Chat mode, Streamer mode, and MC mode. Currently, only 5 reverb modes are set, more may be added or changed in the future.
11. MUTE button: Turns on/off mute microphone channels volume. When on, the mixer will not input any microphone audio.
12. Monitor Output fader: Adjusts the monitoring volume of Monitor ports and Headset port.

Product Usage Instructions

Charging the Mixer

To charge the G10 Mixer, connect the provided USB-C cable to the DC 5V Charging port on the mixer and plug the other end into a power source. The mixer will start charging. It is recommended to charge the mixer when it is low on power or about to run out of power to prevent noise interference.

Connecting External Audio Sources

1. **Music Input:** Connect an external audio source or device to the Music port on the mixer using a 3.5mm audio cable. This can be done by connecting it to the smartphone headphone jack or PC earphone jack.
2. **Microphone Input:** Depending on the type of microphone you are using, connect it to either the 48V Mic port (for 48V condenser microphones) or the LINE IN port (for dynamic microphones). For 48V microphones, make sure to enable the 48V phantom power switch located next to the 48V Mic port.
3. **Musical Instrument Input:** Connect a 3.5mm musical instrument device to the INST port on the mixer.
4. **Audio Playback Output:** Connect audio playback devices like speakers or headphones to the Speaker port using a 3.5mm TRS cable.
5. **Headphone with Microphone Input:** Connect a headphone with a microphone function to the Headset port on the mixer using a 3.5mm TRRS cable. This allows for vocals input via the headset and real-time monitoring of all sound sources simultaneously.

Adjusting Volume and Effects

1. **Music Volume:** Rotate the Music knob clockwise to adjust the input volume of music from BT, Music jack, or USB-C jack.
2. **Voice Changer:** Press the Voice Changer button to cyclically switch between interesting voice changer modes, such as male voice, female voice, baby voice, and uncle voice.
3. **Reverb Modes:** Press the Reverb Preset button to cyclically switch between preset reverb modes, such as original sound mode, KTV mode, Chat mode, Streamer mode, and MC mode.
4. **Monitor Output Volume:** Adjust the monitoring volume of the Monitor ports and Headset port using the Monitor Output fader.

Additional Functions

The G10 Mixer provides additional functions for customization and control:

- **Instant Trigger Sound Pads:** The mixer features 16 instant trigger sound pads for creating live streaming atmospheres.
- **Play/Pause and Next Buttons:** The Play/Pause button allows you to control the playback of accompaniment music (only for BT music accompaniment). The Next button allows you to switch to the next or last music (only for BT).
- **Custom Mode Storage and Delete:** You can save up to 19 custom voice modes using the Custom Mode Storage button. The Custom Mode Delete button allows you to delete the saved custom modes.
- **Mute Button:** The Mute button can be used to turn on/off the mute of microphone channels' volume. When on, the mixer will not input any microphone audio.
- **Monitoring Function:** The MON button enables or disables the function of monitoring microphone audio from different input sources (48V Mic, LINE IN, Mic1~2, Headset).

FAQ (Frequently Asked Questions)

Q: How do I charge the G10 Mixer?

A: To charge the mixer, connect the provided USB-C cable to the DC 5V Charging port on the mixer and plug the other end into a power source. The mixer will start charging.

Q: Can I connect my smartphone or computer to the G10 Mixer?

A: Yes, you can connect your smartphone or computer to the mixer via the Music port using a 3.5mm audio cable.

Q: How many custom voice modes can I save on the mixer?

A: You can save up to 19 custom voice modes using the Custom Mode Storage button.

Q: What is the purpose of the 48V Mic port?

A: The 48V Mic port is used for connecting 48V phantom powered condenser microphones. Make sure to enable the 48V phantom power switch located next to the port when using such microphones.

Q: Can I use the G10 Mixer with headphones?

A: Yes, you can connect headphones to the Speaker port or the Headset port on the mixer using a 3.5mm TRS or TRRS cable.

Portable Audio Console For Live Streaming, Podcast or Recording On Computer & Smartphone

Thank you for using the audio console, for live streaming, podcast, recording, or other content creations. In order to let you experience the product better, we provide the detailed instruction which you can find the product's introduction, usages and other information. Before using this product, please read the manual carefully, so that you can use it right. And if there are any printing or translation errors that cause your use inconvenience, we are deeply sorry; If you have any questions or confusion, please contact us or leave us a message as soon as possible.

Product Overview

The G10 MIXER is a one-stop workstation that allows for the recording and mixing of sound sources without complicated settings. It provides all-in-one audio solution with audio-related operation and workflow needed, for Live streaming, Podcast creation, Event production, Voice over and other Content Creations.

G10 is a multi-functional portable digital audio console, with a comfortable slope control panel design, two independent DSP high-speed processors, and a 4.5-inch high-definition dot-matrix LCD colorful display screen to achieve a real dynamic music spectrum, rich tunes, pitch adjustment, and real-time storage, provide users with an immersive live visual and control experience; speaker port for speaker playback, adjustable music pitch, supplemented by dynamic microphone and musical instrument interfaces, BT wireless accompaniment, which provides convenience for outdoor live streaming; supports 48V microphone input, and five microphone interfaces is suitable for different microphone inputting; 16 live streaming atmosphere sound effects; 11 independent stepping knobs to adjust the sound resources; compatible with PC, smartphones, tablets and other devices as well as Windows, macOS, iOS, Android and other systems.

For Podcast creation, live streaming, event production, voice over or other content creations, G10 will mix your audio in real time, change your voice, control the volume of all your audio sources, customize and store your different voice modes, input external audio from your phone or PC, Makes your content creation easy, And engage your audience like never before.

Product Connection Ports

DC 5V Charging port:

USB-C port; the mixer charging port, only used for charging. NOTE: When G10 is low power or is about to run out of power, it will make a lot of noise; the power is continuing to decrease, noise will be more and more loud. Please charge it as soon as possible.

OTG USB-C port:

Digital transmission port; used for PC/smartphone live streaming port or recording port, or used for PC/smartphone inputting music resources port;

NOTE: USB-C to lightning cable maybe can not be applied to using iPhone for live streaming or recording via USB-C OTG port.

Live(1, 2) port:

Two 3.5mm TRRS analog output port; By the port, the processed sound can be output to the smartphone, tablet or other devices through a 3.5mm TRRS cable. Can live stream to multiple devices at the same time. Mainly use to smartphone or tablet live streaming or recording. Tip: When you chat with followers, fans and other streamers, the voice of other party can input through this port. However, the volume of other party depends on the output volume of the other party, our mixer cannot control the volume.

Please use the USB-C or Lightning to 3.5mm adapter from the phone manufacturer if your phone has not the 3.5mm audio jack.

Music port:

3.5mm music resources input port; Connect an external audio source or devices to the mixer via a 3.5mm audio cable, to play background music during live streaming or recording. Can be connected to the smartphone headphone jack, PC earphone jack.

48V Mic port:

48V condenser microphone input port; 48V phantom power switch is to the right of this port, The 48V phantom power indicator is in the upper left corner of this port.

LINE IN port:

6.35mm dynamic microphone input port.

INST port:

3.5mm TRS input port. Connect 3.5mm musical instrument devices.

Speaker port:

3.5mm TRS output port. Connect audio playback devices, such as speaker, headphone.

Headset port:

3.5mm TRRS port. Connect a headphone with microphone function. used for vocals input via headset, and also can real-time monitor all sound sources simultaneously.

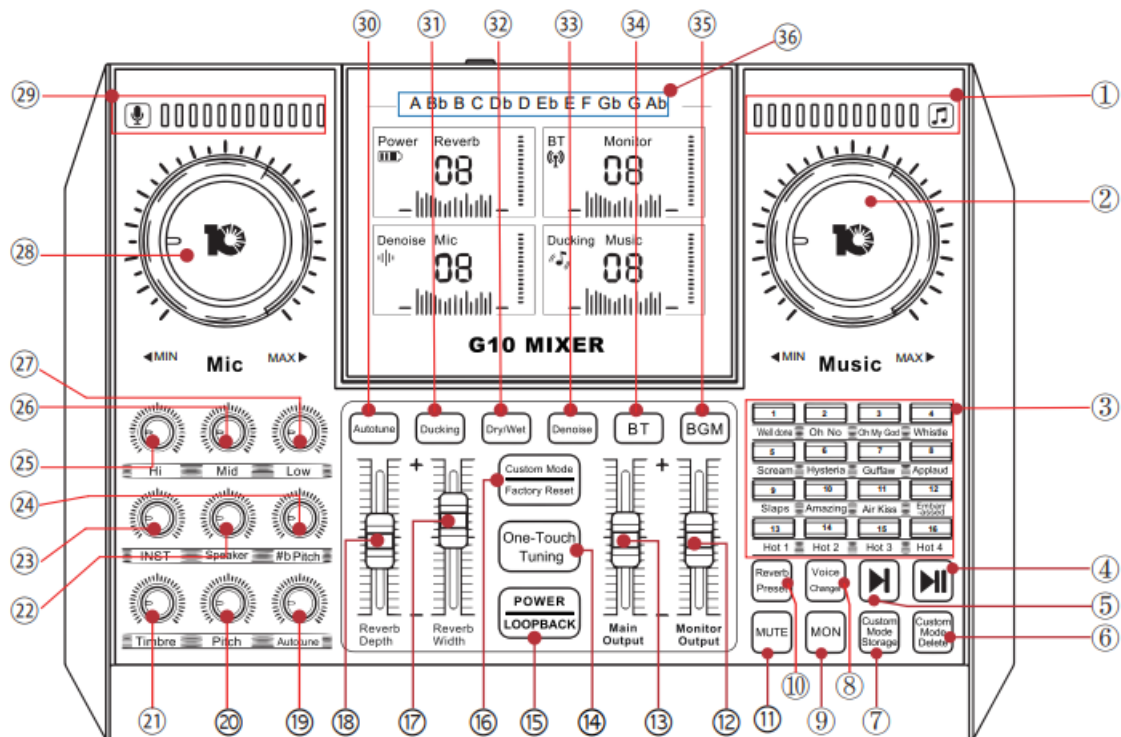
Mic(1, 2) port:

3.5mm TRS mic port. Connect a (XLR to 3.5mm) condenser microphone that does not require external power supply. 48V microphone needs to be connected to external phantom power, then use XLR-3.5mm microphone cable to connect to the audio console .

Monitor port:

Two 3.5mm monitoring port. used for monitoring all sound resources of the mixer in real time.

Panel Functions Introduction



1. Music volume dynamic response light
2. Music knob:
Rotate the knob clockwise to adjust the input volume of music from BT, Music jack, USB-C jack.
3. 16 interesting instant trigger sound pads for live streaming atmosphere creation.
4. ►||button:
Short press to play/pause accompaniment music(only for BT music accompaniment)
5. ►|button :
Short press to switch to next music, Long press 2 seconds to switch to last music(only for BT).
6. Custom Mode Delete button:
Delete the saved custom mode, can delete all of custom mode.
7. Custom Mode Storage button:
Save the current customized voice mode, can be saved up to 19 custom modes.
8. Voice Changer button:
Cyclically switch interesting voice changer modes: male voice, female voice, baby voice, uncle voice; currently only 4 voice changing modes are set, maybe added in the future.
9. MON button:
Turn on/off the function of monitoring microphone audio(input from 48V Mic, LINE IN, Mic1~2, Headset).
10. Reverb Preset button:
Cyclically switch presetted reverb modes: original sound mode, KTV mode, Chat mode, Streamer mode, MC mode; currently only 5 reverb modes are set, maybe added or changed in the future.
11. MUTE button:
Turn on/off mute microphone channels volume; when on, the mixer will not input any microphone audio.
12. Monitor Output fader:
Adjust the monitoring volume of Monitor ports and Headset port.
13. Main Output fader:
Adjust output volume of Live ports & USB-C OTG port(output to recording or live streaming devices).
14. One-Touch Tuning button:

Turn on/off the set microphone EQ parameter to beautify your voice, all sound modes can be applied.

15. POWER/LOOPBACK button:

Long press to power on/off; short press to turn on/off LOOPBACK function(LOOPBACK is for recording the PC system audio from the USB-C input, LOOPBACK ON: the audio resources inside PC(music, video, game, web pages,ect audio) can be heard by audience or can be recorded; LOOPBACK OFF: only microphone audio can be heard by audience or can be recorded).

16. Custom Mode/Factory Reset button:

Short press to cyclically switch the saved Custom Modes, built-in 19 sound modes, can be deleted by the Custom Mode Delete button; Long press to reset the G10 mixer to its original settings.

17. Reverb Width fader:

Adjust the sense of space of reverb effect.

18. Reverb Depth fader:

Adjust the time length of reverb effect.

19. Autotune Knob(only for 12 electronic music tunes):

Rotate the knob clockwise to adjust the intensity of the current autotune tunes.

20. Pitch Knob :

Rotate the knob clockwise to adjust pitch level of the voice.

21. Timbre Knob :

Rotate the knob clockwise to adjust timbre level of the voice.

22. Speaker Knob :

Rotate the knob clockwise to adjust the output volume(output to speaker devices(via Speaker jack)).

23. INST Knob :

Rotate the knob clockwise to adjust the input volume of musical instruments devices (via INST jack)).

24. #b Pitch Knob :

Rotate the knob to raise or lower the pitch levels of current accompaniment music(only for the accompaniment inputted via BT and Music port).

25. Hi Knob :

Rotate the knob clockwise to adjust the treble effect of microphone vocals.

26. Mid Knob :

Rotate the knob clockwise to adjust the midrange effect of microphone vocals.

27. Low Knob :

Rotate the knob clockwise to adjust the bass effect of microphone vocals.

28. Mic Knob :

Rotate the knob clockwise to adjust the input volume of microphone(from mic ports, Headset port).

29. Microphone volume dynamic response light

30. Autotune button :

Short press to cyclically switch 12-step autotunes, including A, Bb, B, C, Db, D, Eb, E, F, Gb, G, Ab; adjust the tune intensity by the Autotune knob; Long press 2s to turn off autotune mode.

31. Ducking button :

Turn on/off auto ducking microphone audio input function. When on, automatically lower the volume of background music while streamer speaking, recover background music vol while streamer stop speaking. at the same time, the Ducking button light will blink, and Ducking icon on display screen is on; when off, the ducking button light is always on, the icon will be always on.

32. Dry/Wet button :

The default is Wet mode, in Wet mode(Wet sound in monitor headphone and record Wet sound), the processed sound (such as reverb, music, others will be recorded and exported to output devices. in Dry mode (Wet sound in monitor earphone but record Dry sound), only mic input audio will be recorded and exported to output devices. The button light will be on always in Wet mode, the button light will blink in Dry mode.

33. Denoise button :

short press to turn on Denoise function, and the Denoise button light will blink, the Denoise icon on display screen will always on. then short press to switch noise reduction levels; long press to turn off Denoise function, and, the Denoise button light is always on, the Denoise icon will be off.

34. BT button :

short press to turn on/off BT function. BT waiting for pairing, the BT button light and BT icon in display screen will blink; BT paired successfully, the BT button light and BT icon will be always on; BT turn off, the BT button light and the BT icon will turn off.

35. BGM button :

short press to turn on/off BGM function. when BGM function on, the mixer will remove 90% vocals of singer in current accompaniment music. the button light will blink when on, the button light will be always on when off.

36. 12-Step Autotunes indicator; when switch autotunes, the corresponding indicator is always on.

Warm Tips

1. Voice Changer modes or Reverb Preset modes

These modes have a set reverberation effect. If you need to adjust the mode reverberation effect, you can push the reverberation faders to the max, and then to the min. then, you turn off the reverb effect, and then adjust the reverb effect according to your own needs.

2. Custom Mode

G10 MIXER has the memory function, your settings(such as Hi Mid Low setup, reverb, pitch, timbre as well as all volume settings) can be saved to Custom Mode, up to 19 mode can be saved. After restart the G10 sound mixer, you can switch to it via Custom Mode button, No need to set again.

3. #b Pitch function

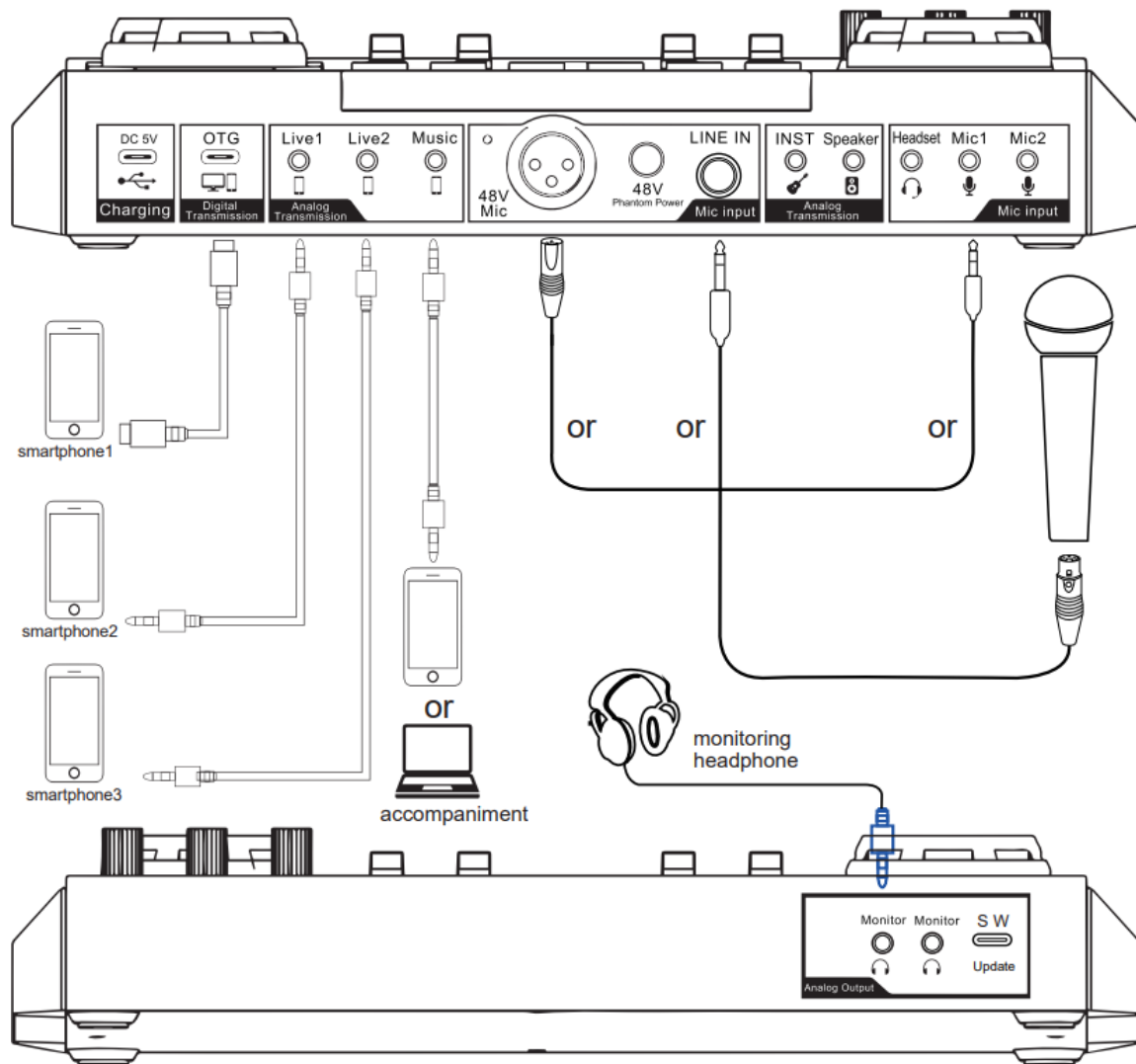
This function is to raise or lower the pitch levels of current accompaniment music, provides an interesting tuning. NOTE: it only for the accompaniment inputted via BT and Music port.

4. LOOPBACK function

This function is to input PC internal audio. when you live stream with only one computer, and you want to input the computer internal audio simultaneously; at this time, you need turn on the LOOPBACK function, so that your audience can hear the audio inside your computer.

Connection Guide

Live Streaming or Recording on Smartphone

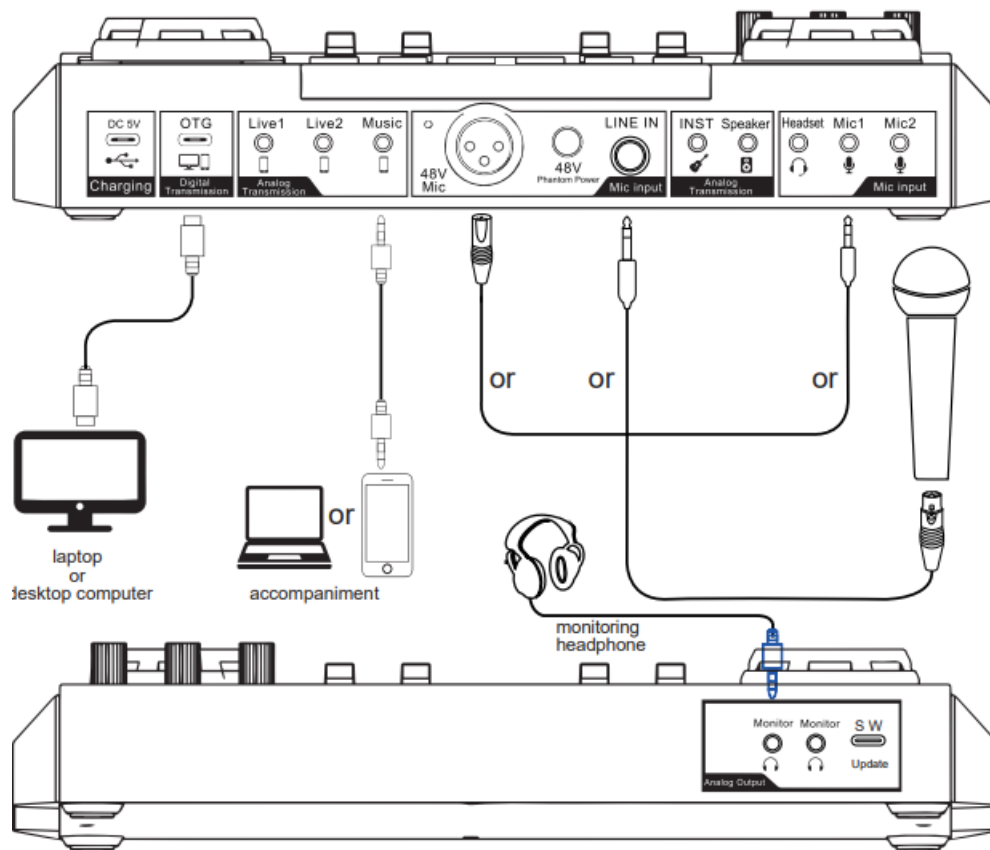


1. Connect the live streaming smartphone, accompaniment smartphone, monitoring earphone and microphone to the mixer as shown in the above.
2. open on the live steaming app on smartphone.
3. Power on the mixer and set the voice FX needed and functions, then test the live streaming effect.
4. Open the accompaniment music app on the accompaniment mobile phone and start live streaming.

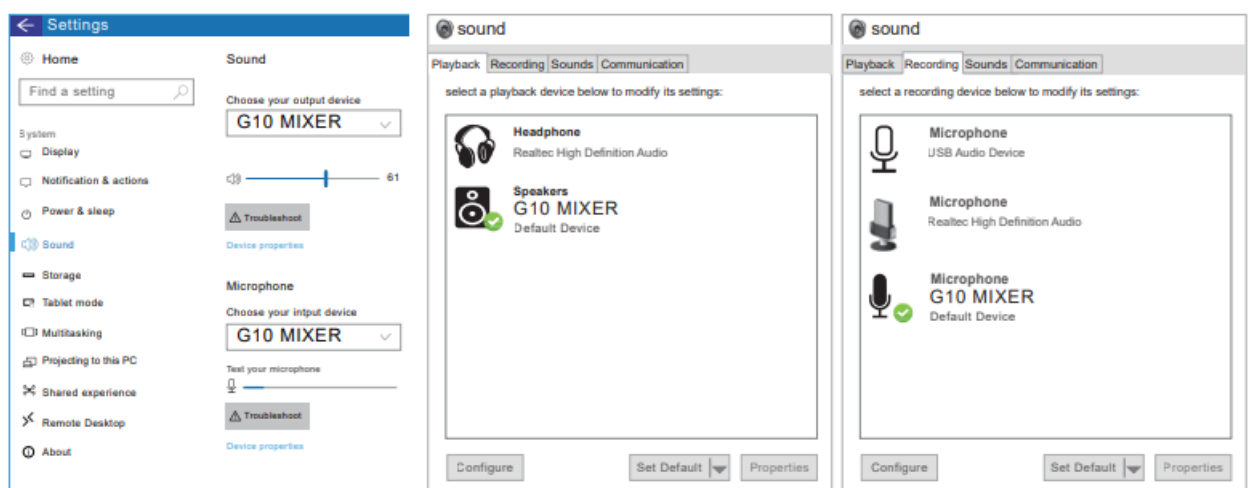
WARM TIPS:

1. Please use the USB-C or Lightning to 3.5mm audio adapter from the phone manufacturer. USB-C to Lightning cable maybe can not be applied to the live streaming on iPhone via OTG port.
2. The mixer support live streaming up to 3 different smartphones, 4 microphones & 1 headset inputs at the same time. Do not have to connect all output and input ports if not needed.
3. The monitoring volume is not the main output volume. The volume you hear in monitoring headset is only the volume you hear in monitoring headset, not the volume output to the live broadcast or recording equipment. It is recommended to test the effect before live broadcast or recording.

Live Streaming or Recording on PC



1. Connect the accompaniment source, monitoring earphones, and mic to the mixer as shown in the above.
2. Connect the PC and the mixer by USB-C cable. The PC generally automatically recognizes the mixer.
3. Enter the Sound settings panel of PC, and set the mixer "G10 MIXER" as the system default input or output device, or playback in "Playback" and "Recording" option, as shown in the down.
4. Set the input and output on live streaming platforms, accompaniment software as G10 MIXER .



1. It is not recommended using the Live1~2 ports to connect computer for live streaming or recording.
2. Support live stream on computer and smartphone simultaneously.
3. Support two 3.5mm headphone mono monitoring simultaneously.
4. Support multi-microphone and headset microphone input vocals simultaneously.
5. When only using one PC to live stream and want to simultaneously input the PC system audio, please turn on "LOOPBACK" function.

BT Connection

1. Turn on the BT function via BT button, and the BT button light starts to flash.
2. Search the device in smartphone BT menu, find the BT device of “G10 MIXER”, choose it to connect.
3. After the smartphone BT is connected successfully to the mixer, the BT button light is on always.
4. Please play accompaniment on phone music player, after set up the mixer.
5. Open the live streaming software on the smartphone or computer for live streaming.

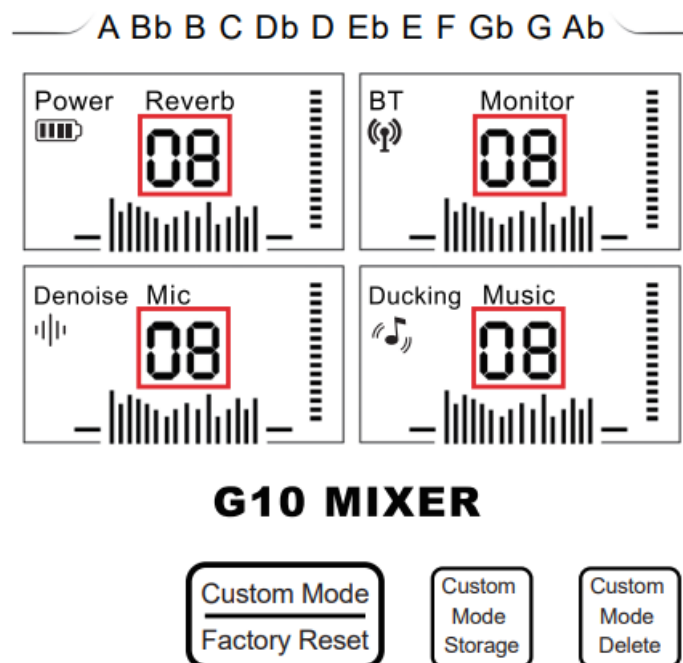
WARM TIPS

- BT connection is limited by distance(10meter), please do not place the too far away from the mixer.
- Be far away from strong signal interference place.
- BT feature is only for accompaniment music playback.



Custom Mode Settings

By setting the microphone EQ, pitch, timbre, reverb, reverb mode, voice changer mode, all volumes, etc, you can customize the desired voice effect, and then use the “Custom Mode Storage” button to store the set voice mode. short press the “Custom Mode/Factory Reset” button to switch to the desired voice mode for live streaming or recording without setting voice parameters again.



Switch the saved Custom Mode

short press the Custom Mode button to cyclically switch the saved Custom Mode and the 4 number(red frame) on display screen will show the serial number of Custom Mode simultaneously.

Save the Custom Sound Mode

- First, you can delete the saved Custom Sound Mode by pressing the Custom Mode Delete button

- Then Set Hi, Mid, Low, Timbre, Pitch, Autotune, Reverb modes, Reverb, Voice Changers, all volumes, ect sound EQ and sound effects.
- Then short press the Custom Mode Storage button to save the Custom Sound Mode and remember the serial number of the Custom Mode. A total of 19 modess can be saved. the 4 number(red frame) on display screen will show the serial number(from 01 to 19) of Custom Mode simultaneously

Noise Treatment

- **Noise reduction function:**

G10 mixer has built-in noise reduction button (Denoise botton), if your room has much background noise, you can turn on the noise reduction function to filter background noise.

- **Low input and high output:**

Reduce the input volume of the microphone on the G10 audio console (to no noise), and then amplify the output volume (Main Output fader), similar to the compression effect.

- **Adjust microphone sensitivity**

If your microphone have Sensitivity adjustment knob on microphone, by the knob, you can lower the microphone pickup range and volume to reduce background noise.

- **Microphone placement**

The condenser microphones are sensitive to sound pickup, have a wide pickup range, and can pick up background noise that our ears can not hear. Therefore, it is recommended to use it in a quiet environment; You can place the microphone away from noise sources, such as fans, air conditioner vents, and main host of a desktop computer, etc.

- **Close to the microphone**

The louder the ambient noise, the closer the microphone should be, to improve the signal-to-noise ratio of the recording and reduce the ambient noise recorded by the microphone.

- **Do not use while charging**

it is not recommended to use while charging, to avoid current sound.

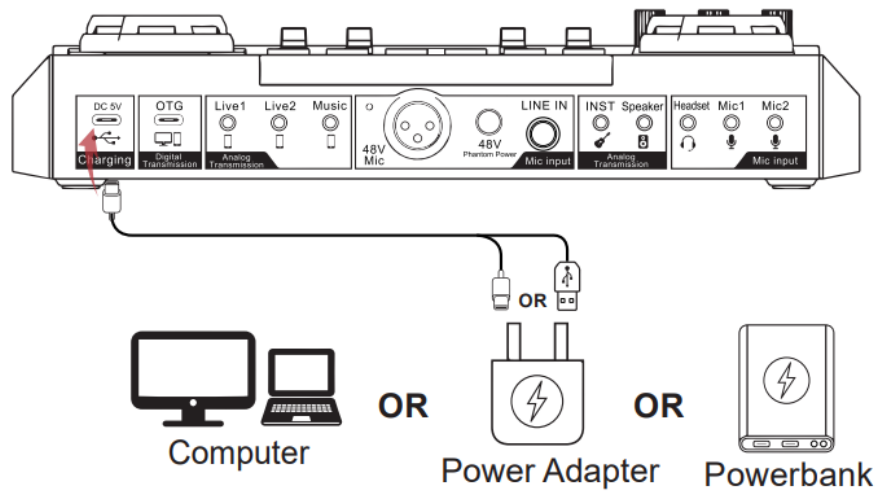
- **Filter noise on live streaming software**

Add noise suppression and noise gate to the live streaming software, such as OBS Studio. Acoustic treatment Some acoustic treatments can be done in the room, such as sound-absorbing foam, heavy curtains, thick carpets, sofas, bookcases, ect, can effectively reduce room reflection, reverb, echo, ect.

- **Sound quality**

G10 audio console is designed for live streaming, online podcast and others, its sound quality is not as professional as a professional mixer.

Charging

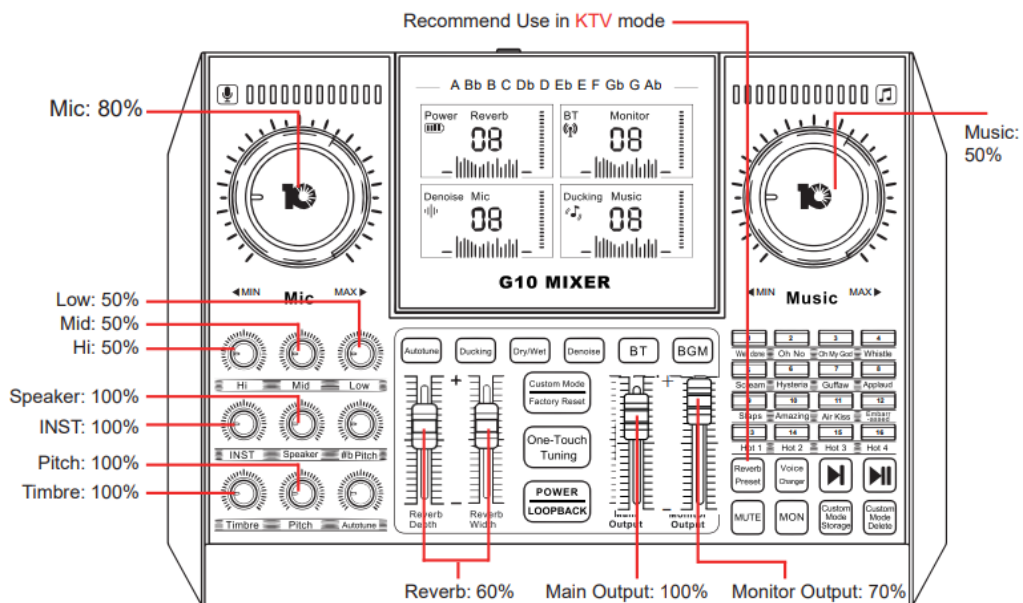


NOTE:

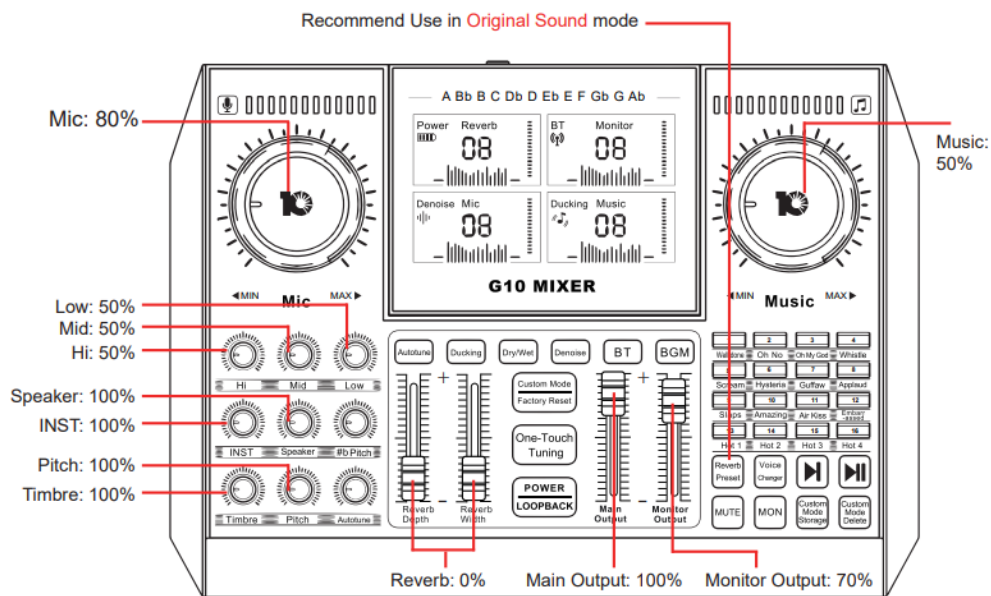
When the mixer has low power or is about to run out of power, it will make a lot of noise; the power is continuing to decrease, the noise will be more and more loud. Please charge it as soon as possible.

Tuning Settings Recommend

Karaoke Settings Recommend



Live Streaming Settings Recommend



Warm Tips

Everyone's voice is different, it is recommended to wear monitoring headphones to adjust microphone EQ, reverb, pitch, timbre, ect; the mixer has storing sound mode function, you store your settings of voice, and switch to the stored sound mode via Custom Mode button.

Technical Parameter

Basic Parameter			
Name		G10 MIXER	
Dimension		L272*W195*H60mm 820g	
Environment		Temperature 0°C ~ 45°C/0°F-113°F	
Battery		Lithium ion 5000mAh/3.7V (9.25Wh)	
Working Time		7-8 hours(XLR-3.5 condenser mic); 4-5 hours(48V condenser mic)	
Charging		DC+5V..... , 1A MAX; 5 Hours Full Charge	
Out Power		10mW Load 32Ω Condenser microphone	
Frequency Response		50Hz~20KHz	
Reverb Processing		32Bit RISC Digital Processor, Up To 300MHz	
Sampling Rate		48000Hz/16Bit	
BT Version/Name		V5.0, Compatible with Bluetooth 4.2BR1 G10 MIXER	
BT Receive		<12 m No obstacle	
S/N Ratio		>102dB	
THD		<0.3% @1kHz Live streaming	
Interfaces Parameter			
USB port	Type-C USB	INST port	3.5mm TRS port
Live port	3.5mm TRRS port	Speaker port	3.5mm TRS port
Music port	3.5mm TRRS & TRS port	Headset port	3.5mm TRRS port
48V Mic port	XLR port	Mic port	3.5mm TRS port
LINE IN port	6.35mm TRS & TS port	Monitor port	3.5mm TRS port

Troubleshooting(FQA)

1. **Q:** The device does not work, or there is no sound suddenly.

Answer: The battery is dead, please connect to USB cable to charge before use;

2. **Q:** There is a lot of noise during the live streaming.

Answer: a. Check whether the headset is inserted in place, and then plug in the headset again;

- Whether the earphone is plugged into the corresponding identification position;
- Appropriately reduce the microphone input volume, and turn on noise reduction function;
- Check whether the battery is close to a dead state, please charge it in time;

- If the PC is live streaming, and some laptops have interfering sound cards, try to unplug the computer's charging cable;

3. **Q:** The microphone has no sound.

Answer:

1. Check the insertion position of the mic cable and make sure that the logo is face to you, or replacing the microphone cable to check if the microphone cable is faulty;
2. The microphone sound is turned off to the minimum, then please monitor and increase gradually the voice volume of mic;

4. **Q:** The live streaming sound is small or silent.

Answer: a. Check whether the live cable connection is plugged into the live streaming port;

- Replace audio cable or USB cable to check if whether the cable is faulty;
- Check whether the Main Outout fader is turned on to the maximum;
- Check if your phone can record, then try live streaming again.

5. **Question:** The audience can't hear the music when live streaming, and it has no effect

Answer:

- Check whether the USB cable is plugged into the charging port, please use the configuration cable of this machine correctly;
- Check whether the Dry/Wet button is turned on to the wet recording mode, dry recording mode is only output the microphone audio;
- Check whether the "LOOPBACK" function is turned on when live streaming or recording on PC.

6. **Q:** The sound is not normal.

Answer:

- This device has a variety of pitch-shifting effects, please switch the sound mode to original sound mode;
- The earphone is incorrectly inserted in the headset position, please unplug it and insert it to the earphone mark position.

7. **Q:** Can not be used with guitar

Answer: It should be connected to the 3.5mm "INST" jack, if 6.35mm plug, Please use a 6.35mm to 3.5mm adapter or insert into the LINE IN jack(but the input volume of guitar only can be adjusted by the Mic knob).

8. **Q:** Auto Ducking function not working


Answer: It doesn't work on a voice call, it works on podcast or live streaming with music.

Warm Tips

- Please do not charge the audio console during live streaming.
- Please charge the audio console before using for the first time.
- If not used for a long period, please charge the audio console every 3 months.
- Charging is also possible when the power is off.
- Do not charge for a long time.
- Please stop charging when the battery is fully charged to avoid over-charging.
- BT connection is limited by distance. Please do not place the too far away from the mixer to avoid interference.
- BT feature is only for accompaniment music playback.
- During using desk computer or laptop live streaming or accompaniment, you must turn on "Loop-back" function, Only in this way can the viewers hear your voice and the sound from the PC.

- the mixer is a entertainment audio interface with mixer and sound card, designed for live stream-ing, podcast, recording and other content creations, its audio quality is not as professional as Pro mixer.

Documents / Resources

<div><div>G10 USER MANUAL</div><div>G10 MIXER</div><div></div><div><small>Portable Audio Console For Live Streaming, Podcast or Recording On Computer & Smartphone</small></div></div>	<div>tenlamp G10 Mixer Portable Audio Console For Live Streaming [pdf] User Manual</div> <div>G10 Mixer Portable Audio Console For Live Streaming, G10, Mixer Portable Audio Console For Live Streaming, Portable Audio Console For Live Streaming, Audio Console For Live Streamin g, Console For Live Streaming, Live Streaming, Streaming</div>
---	--

References

- [User Manual](#)