

Tenda®
TEG205E Class A
Switch with Power
Adapter



Tenda TEG205E Class A Switch with Power Adapter Instruction Manual

[Home](#) » [Tenda](#) » Tenda TEG205E Class A Switch with Power Adapter Instruction Manual 

Contents

- [1 Tenda TEG205E Class A Switch with Power Adapter](#)
- [2 Product Usage Instructions](#)
- [3 FAQ](#)
- [4 Descriptions](#)
- [5 Features](#)
- [6 USPs](#)
- [7 Typical Scenario](#)
- [8 Specifications](#)
- [9 CONTACT](#)
- [10 Documents / Resources](#)
 - [10.1 References](#)

Tenda®

Tenda TEG205E Class A Switch with Power Adapter



Product Usage Instructions

Safety Precautions:

Before operating the switch, ensure to read and follow the safety precautions listed below:

- For indoor usage only.
- If used for desktop mounting, ensure the device is horizontally mounted for safe use.
- For wall or rack mounting, the device is suitable for mounting at heights under 2m.
- When powered on by the power adapter, the mains plug should be used as the disconnect.

Usage Guidelines:

Follow these steps to use the switch:

1. Connect the switch to a power source using the external power adapter.
2. Connect your devices to the switch using Ethernet cables.
3. Power on the switch using the mains plug.
4. Configure the switch settings as needed for your network.

Maintenance:

To ensure optimal performance of the switch:

- Regularly check for any physical damage or loose connections.
- Keep the switch in a dust-free environment.
- Avoid exposing the switch to extreme temperatures or moisture.

FAQ

- **Q:** Can I mount the switch vertically for wall or rack mounting?
 - **A:** No, the switch is only suitable for horizontal mounting when placed on a desk. For wall or rack mounting, ensure it is mounted horizontally at heights under 2m.
- **Q:** How do I power on the switch?
 - **A:** Use the mains plug connected to the power adapter to power on the switch.

Descriptions



TEG205E is a 5-port Gigabit switch, supporting web management. Featuring automatic detection and alerting for loops and unauthorized DHCP, this switch elevates your network maintenance effortlessly from the comfort of your home, saving time and money.

Features

- Compliant with IEEE802.3, IEEE802.3u, IEEE802.3ab, IEEE802.3x, IEEE802.3z, IEEE802.1p, IEEE802.1q standards
- 5 ×10/100/1000 Base-T Ethernet ports
- 8 K MAC address table and MAC address auto learning
- IEEE 802.3x full-duplex flow control and half-duplex backpressure flow control
- 10 Gbps switching fabric for non-blocking line-speed forwarding
- Support QVLAN, DHCP Snooping, loop protection, etc.

USPs



Smart Management

- supporting web management.



Log alarm

- Supports abnormal status protection and real-time alarms such as loops and private routers.



All Gigabit

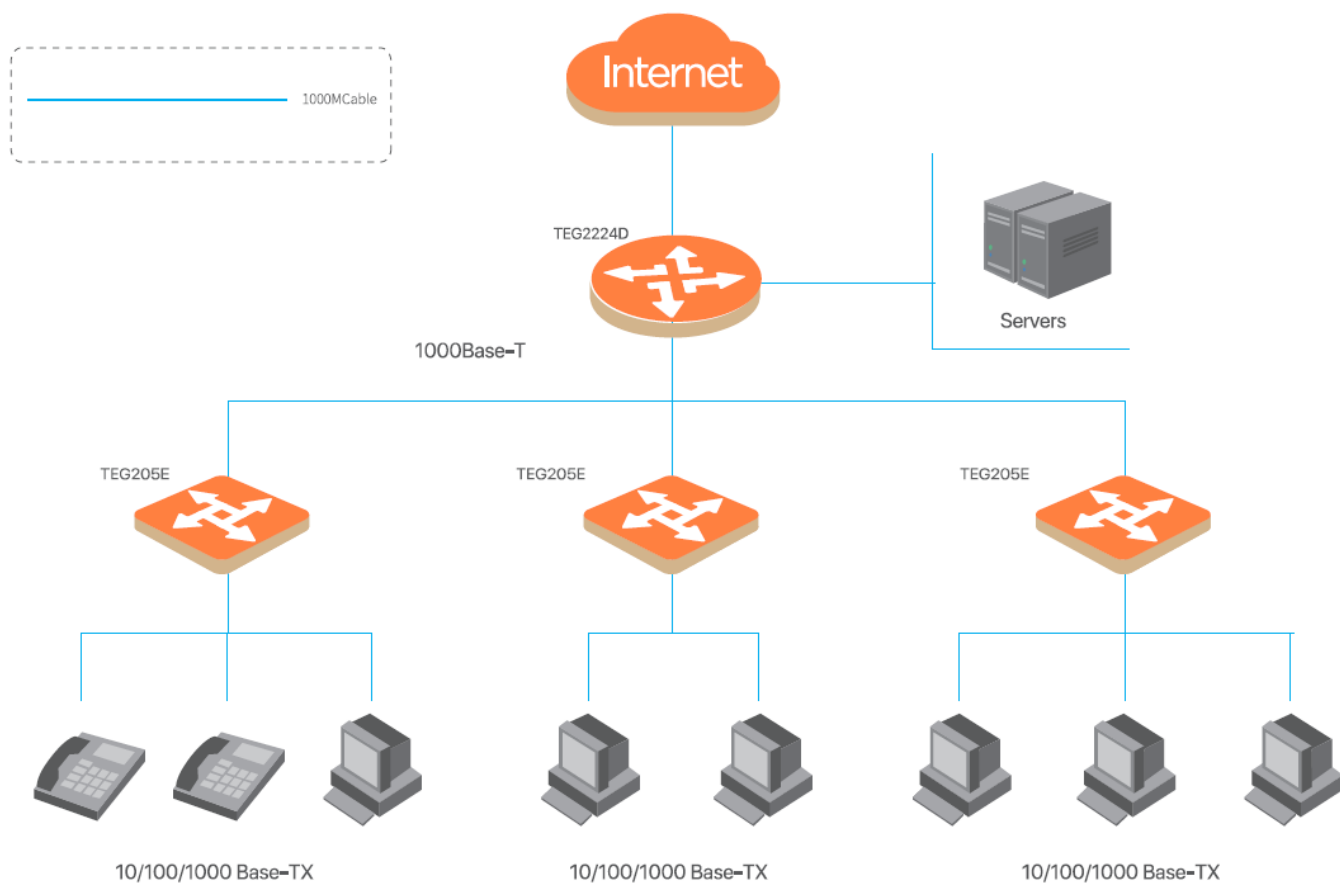
- The switch provides 5 gigabit ports, 10 times faster, ensuring smooth transmission of large files and videos.



Abundant Management Features

- The switch offers QVLAN, VLAN transparent transmission, traffic statistics, loop guard, MAC address binding, DHCP Snooping and other functions, suitable for various scenarios of network deployment.

Typical Scenario



Specifications

Hardware specifications	
Network Standards	IEEE 802.3, IEEE 802.3u, IEEE 802.3ab, IEEE 802.3x, IEEE 802.3z, IEEE 802.1q, IEEE 802.1p
LED indicators	One Link/Act LED indicator for each port One PWR/SYS LED indicator for each device
Fixed ports	5 x 10/100/1000 Base-T Ethernet ports (Data)
Lightning protection	Port: 6 kV Power supply: 6 kV
Forwarding mode	Store-and-forward
Switching capacity	10 Gbps
Packet forwarding rate	7.4 Mpps
Switching buffer	NA
MAC address table	2K
Input voltage	100 – 240V AC 50/60Hz
Dimensions (L x W x H)	100 mm x 64 mm x 25 mm
Environment	Operating temperature: 0°C – 40°C Storage temperature: -40°C – 70°C Operating humidity: (10% – 90%) RH, non-condensing Storage humidity : (5% – 90%) RH, non-condensing
Certificates	FCC, CE, RoHS

Software Features	
Security Features	Support whitelist binding of MAC addresses, ports and VLAN Support port isolation
VLAN	Support VLAN transparent transmission Support IEEE 802.1q VLAN
DHCP	Support DHCP Client Support DHCP Snooping
IGMP	Supports IGMP fast leave Supports IGMP Report Suppression
QoS	Support DSCP priority Support SP, SWP, WP
Port Properties	Support port flow control Support port isolation Support N:1 port mirroring Support port statistics of received and transmitted packets, conflict packets and CRC error packets
Rate Limit	Support ingress and egress rate limits on ports
Loop Guard	Support loop detection and guard on each port
Storm Control	Support storm control on ports
Upgrade Import and Export	Support HTTP upgrade Support configuration import and export
Management and Maintenance	Support local web UI management Support ping test

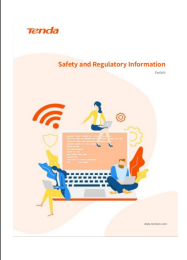
CONTACT

SHENZHEN TENDA TECHNOLOGY CO.,LTD.

- Tenda Technology Bldg.Int'l E-City, #1001 Zhong Shan Yuan Rd.,Nanshan District,Shenzhen China.
- **E-mail:** support@tenda.com.cn
- **Tel:** +86-755-2765 7098
- **Fax:**+86-755-2765 7178

Specifications are subject to change without notice. Copyright ©2020 SHENZHEN TENDA TECHNOLOGY CO.,LTD. All rights reserved. Tenda is the trademark of SHENZHEN TENDA TECHNOLOGY CO.,LTD. All other brand names mentioned herein are the trademark or registered trademarks of their respective holders.

Documents / Resources

	<p>Tenda TEG205E Class A Switch with Power Adapter [pdf] Instruction Manual</p> <p>TEF1005D, TEF1109D, TEG1005D, TEG1005M, TEG1008M, TEG1016M, TEG1116M, TEF1105P-4-38W, TEF1105P-4-63W, TEF1106P-4-63W, TEF1109P-8-63W, TEF1109P-8-102W, TEF1110P-8-63W, TEG1105P4-63W, TEG1109P-8-102W, TEG2210P-8-120W, TEG1110PF-8-102W, TEG1110PF-8-120W, TEG2205D, TEG2208D, TEG205E, TEG, TEG205E Class A Switch with Power Adapter, TEG205E, Class A Switch with Power Adapter, Switch with Power Adapter, Power Adapter, Adapter</p>
--	--

References

-  [Tenda US](#)
-  [Tenda US](#)
-  [tendacn.com/do](#)
- [User Manual](#)

[Manuals+](#), [Privacy Policy](#)

This website is an independent publication and is neither affiliated with nor endorsed by any of the trademark owners. The "Bluetooth®" word mark and logos are registered trademarks owned by Bluetooth SIG, Inc. The "Wi-Fi®" word mark and logos are registered trademarks owned by the Wi-Fi Alliance. Any use of these marks on this website does not imply any affiliation with or endorsement.