



Tenda TEG1016D Bridging Two 06 at a Push of Button Instructions

[Home](#) » [Tenda](#) » Tenda TEG1016D Bridging Two 06 at a Push of Button Instructions 

Contents

- [1 Tenda TEG1016D Bridging Two 06 at a Push of Button](#)
- [2 Why we design this feature](#)
- [3 Preparations](#)
- [4 Setup Steps](#)
- [5 Documents / Resources](#)
- [6 Related Posts](#)



Tenda TEG1016D Bridging Two 06 at a Push of Button



Why we design this feature

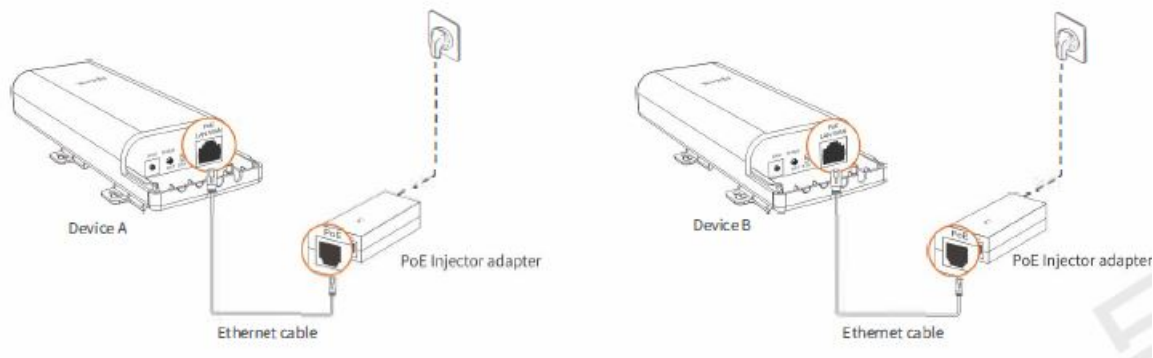
When user use CPE to do CCTV surveillance for elevator, construction site etc application. Usually, they will setup two CPE in the Web UI to bridge them together. This will take more time. So we provide a new way to bridge two CPE at a push of button to make it more easily.

Preparations

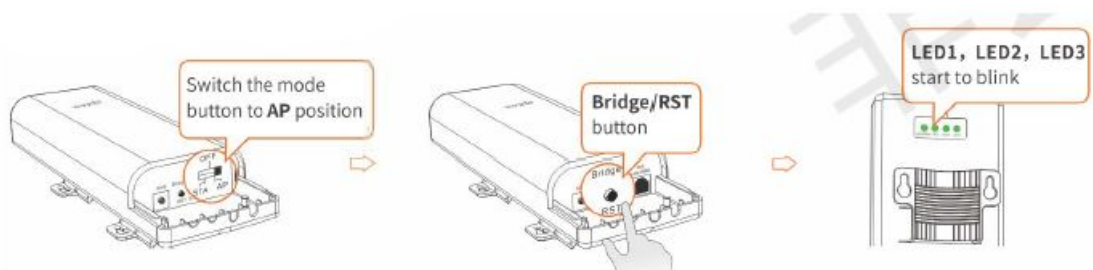
Two 06 (Device A/Device B), Two Ethernet cables, Two PoE injector adapters.

Setup Steps

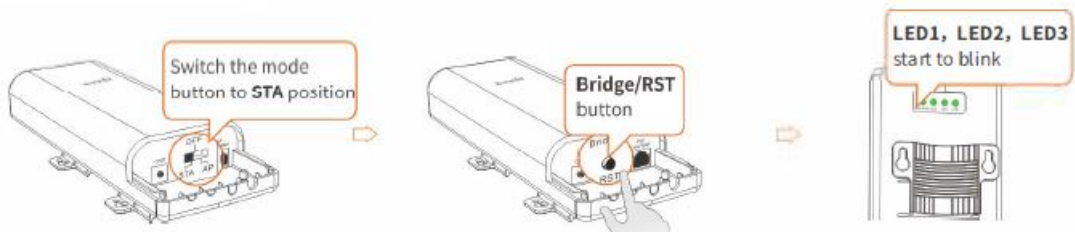
1. Please power on Device A and Device B with PoE Injector adapter, the indicator LAN/WAN on the rear panel will be on.



2. Please switch the mode button(STA/OFF/AP) of device A to AP position, then press and hold the Bridge/RST button for 3-7s (it is suggested to count from 1 to 5), then release it. The signal strength LED (LED1, LED2, LED3) on the rear panel will start to blink.



3. When the LED of Device A is blinking, within 2 minutes, please switch the mode button (STA/OFF/AP) of Device B to STA position, then press and hold the Bridge/RST button of device B for 3-7 seconds, then release it. The signal strength LED (LED1, LED2, LED3) on the rear panel will start to blink. Two devices will start to negotiate to bridge together.



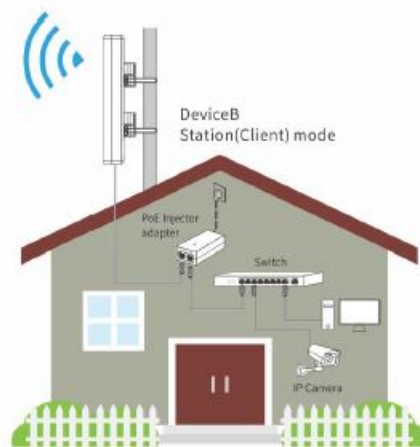
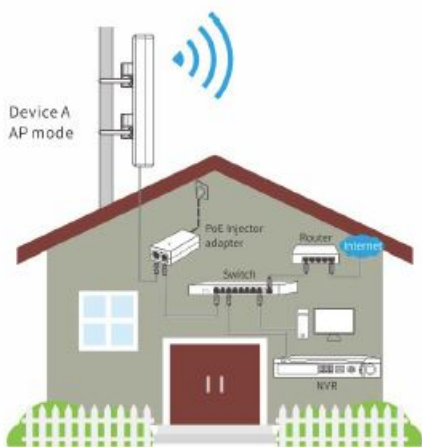
4. When the two device is negotiating, the signal strength LED (LED1, LED2, LED3) of two devices will turn off firstly, after 10 seconds later, it will turn on again. The signal strength LED (LED1, LED2, LED3) of two devices keep solid means the two devices are bridged together successfully.



5. When you connect two device successfully, please deploy Device A on the location A where you deploy NVR and Device B on the location B where you deploy IP Camera (CCTV). You can adjust the direction of two device according to signal strength LED (LED1, LED2, LED3) to achieve the best performance.



6. Connect the switch that connect NVR to PoE Injector adapter's LAN port on the location A. Connect the switch that connect IP Camera to PoE Injector adapter's LAN port on the location B.



Within 2km visual range, it is capable to do 30pcs 720P (Impx) CCTV Surveillance. Within 5km visual range, it is capable to do 10pcs 720P (Impx) CCTV Surveillance.

Documents / Resources



[Tenda TEG1016D Bridging Two 06 at a Push of Button \[pdf\] Instructions](#)
 TEG1016D, Bridging Two 06 at a Push of Button, TEG1016D Bridging Two 06 at a Push of Button