



Tenda N301 Wireless Easy Setup Router Installation Guide

[Home](#) » [Tenda](#) » Tenda N301 Wireless Easy Setup Router Installation Guide 

Tenda

Install Guide
Wireless N301 Easy Setup Router
Model: N301

Contents

- [1 Package Contents](#)
- [2 Connect Your Router \(figure 1\)](#)
- [3 Configure Your Router \(figure 2\)](#)
- [4 Documents / Resources](#)
- [5 Related Posts](#)

Package Contents

- Wireless Router*1
- Power Adapter*1
- Ethernet Cable*1
- Install Guide*1

If any item is incorrect, missing, or damaged, please keep the original package and contact your dealer for immediate replacement.

You can get the User Guide online at www.tendacn.com for featured settings of the router.

Figure 1

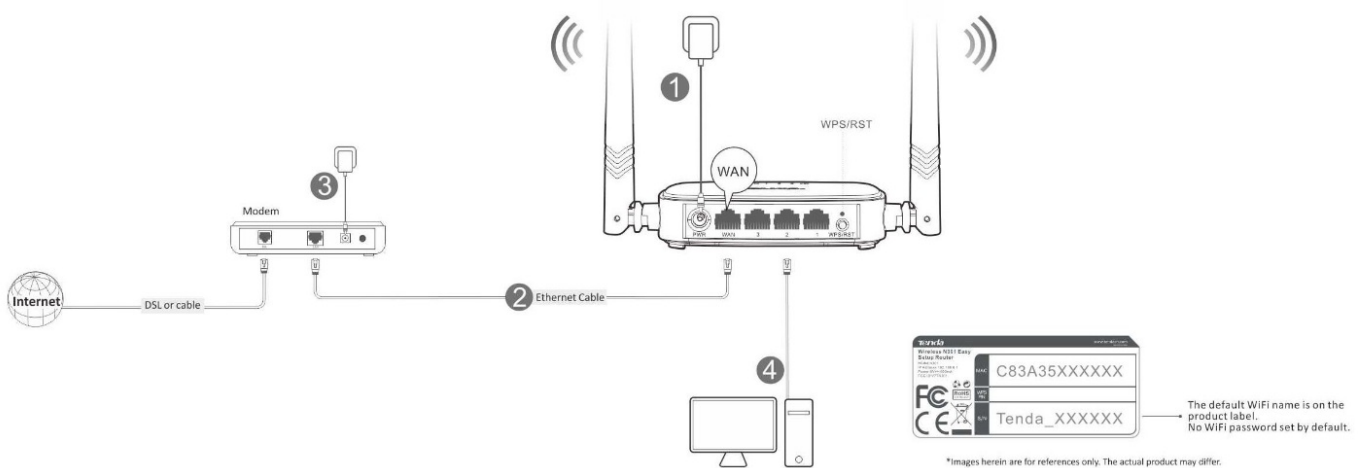
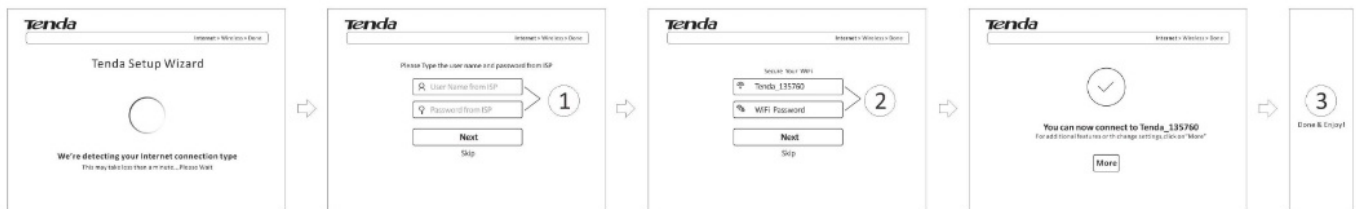


Figure 2



Connect Your Router (figure 1)

Step 1 Insert the power adapter to your router's Power port, and plug the other end into a power outlet.

Step 2 Connect the modem to the Internet port of your router using an Ethernet cable.

Step 3 Insert your modem's power adapter into the power interface, and plug the other end into a power outlet.

Step 4 Connect your computer to the router wirelessly, or via an Ethernet cable.

Wired: Connect your computer to the router using the included Ethernet cable.

Wireless: To connect with WiFi, use the WiFi name and password on the product label.

Either WiFi (SSID) or WiFi password is changed, and devices are required to reconnect with WiFi manually once again.



Tips

If you access the Internet via an **Ethernet cable**, follow the steps below:

Step 1: Insert the power adapter into your router's Power port, and plug the other end into a power outlet.

Step 2: Insert the **Ethernet cable** into the router's Internet port directly.

Step 3: Connect your computer to the router wirelessly, or via an Ethernet cable (Refer to Step 4 above).

Configure Your Router (figure 2)

Step 1 Access the wireless router: Open a web browser, type `192.168.0.1` or tendawifi.com in the address bar, and tap Enter on the keyboard.

Step 2 Access the Internet (Follow the instructions and complete the Internet setup. There are three connection types: PPPoE, Dynamic IP, and Static IP. Take PPPoE as an example here.)

1. Type the user name and password from your Internet Service Provider.
2. Customize your WiFi name and password.

3. Done & Enjoy!

Your router's LED indicators may differ. Please refer to the actual product.

LED Indicator	Status	Description
SYS	Blinking	The system is working fine.
Off	There are no power supply or router malfunctions.	
WLAN	Solid	Wifi Is enabled.
Blinking	The Router is transmitting WiFi data.	
Off	WiFi is disabled.	
1/2/3	Solid	The LAN port is well-connected.
Blinking	The LAN port is transmitting data.	
Off	No link is detected on the LAN port.	
WAN	Solid	The WAN port is well-connected.
Blinking	The WAN port is transmitting data.	
Off	No Ethernet cable is connected to the WAN port.	
WPS	Solid	WPS is enabled, or a WPS connection is established.
Blinking	The Router is performing WPS negotiation to a client device or transmitting data.	
Off	WPS is disabled.	

Your router's buttons may differ. Please refer to the actual product.

Button	Description
WPS/ RST	Press and hold it for about 8 seconds and then release it (all LED indicators will light up once) to Reset/Login the router to factory default settings.
Press and hold it for 173 seconds, and then release it to enable the WPS feature. Within 2 minutes, enable the wireless device's WPS feature to establish a WPS connection.	

QI: Where should I place my wireless router for optimum performance?

- **A1:** To achieve optimum performance, please pay attention to the following key points:
- Place it around the central area in which your laptops, smartphones, and other devices usually surround, and preferably within line of sight to your wireless devices.
- Put it on an elevated spot such as a high shelf, keeping the number of walls and ceilings to a minimum between the Router and other clients such as computers and smartphones.
- Keep it away from electrical devices that are potential sources of interference, such as ceiling fans, home security systems, or microwaves.
- Keep it away from any large metal surfaces, such as a solid metal door or aluminum studs.

– Keep it away from other materials such as glass, insulated walls, fish tanks, mirrors, brick, and concrete that may also affect your wireless signal.

Q2: I cannot log in to the wireless router's User Interface. What should I do?

- **A2:** Please follow the instructions below step by step.
- a. Verify the Ethernet cable between your PC and the router is intact and well-connected. If not, use another Ethernet cable.
 - b. Clear the cache of your browser, or open another web browser.
 - c. Double-check the TCP/IP settings on your computer. Verify if it is set to obtain an IP automatically.
 - d. Press and hold the RST button for about 8 seconds, then release it to restore factory settings; then try to log in again.
 - e. Try to log in on another computer, smartphone, or iPad.

FAQ



FCC Statement

This device complies with Part 15 of the FCC Rules. Operation is subject to the following two conditions: (1) This device may not cause harmful interference, and (2) this device must accept any interference received, including interference that may cause undesired operation.

This equipment has been tested and found to comply with the limits for a Class B digital device, pursuant to Part 15 of the FCC Rules. These limits are designed to provide reasonable protection against harmful interference in a residential installation. This equipment generates, uses, and can radiate radio frequency energy and, if not installed and used in accordance with the instructions, may cause harmful interference to radio communications. However, there is no guarantee that interference will not occur in a particular installation. If this equipment does cause harmful interference to radio or television reception, which can be determined by turning the equipment off and on, the user is encouraged to try to correct the interference by one of the following measures:

- Reorient or relocate the receiving antenna.
- Increase the separation between the equipment and receiver.
- Connect the equipment into an outlet on a circuit different from that to which the receiver is connected.
- Consult the dealer or an experienced radio/TV technician for help.

FCC Caution: Any changes or modifications not expressly approved by the party responsible for compliance could void the user's authority to operate this equipment. This transmitter must not be co-located or operating in conjunction with any other antenna or transmitter. The manufacturer is not responsible for any radio or TV interference caused by unauthorized modifications to this equipment.

Radiation Exposure Statement

This equipment complies with FCC radiation exposure limits set forth for an uncontrolled environment. This equipment should be installed and operated with a minimum distance of 20cm between the radiator & your body.



CE Mark Warning

This is a Class B product. In a domestic environment, this product may cause radio interference, in which case the user may be required to take adequate measures. This device complies with EU 1999/5/EC.

NOTE: (1) The manufacturer is not responsible for any radio or TV interference caused by unauthorized modifications to this equipment. (2) To avoid unnecessary radiation interference, it is recommended to use a shielded R145 cable.

Address Info

Tenda Middle East Electronics Trading LLC P.O. BOX 184105, Dubai, UAE Tenda Technology GMBH Neumann-Reichardt-Str. 27-33, Haus 12, 22041, Hamburg PT. Tenda Technology Indonesia Mangga Dua Mall, LT IV, Blok A

NO. 65, Jakarta, Indonesia Tenda Technology Inc 20418E Walnut Dr N,STE 1J&1K, Walnut, CA, USA, 91789

Technical Support

Shenzhen Tenda Technology Co., Ltd.

6-8 Floor, Tower E3, No.1001, Zhongshanyuan Road, Nanshan Global Hotline: (86) 755-27657180 Hongkong

Hotline: 00852-81931998 Canada Hotline: 1-888-998-8966 New Zealand Hotline: 800787922 Website:

<http://www.tendacn.com>

District, Shenzhen, China.518052

United Kingdom Hotline: 44 0800 1337 824

Australia Hotline: 1300787922

Skype: Tendasz E-mail: support@tenda.com.cn

Copyright

© 2015 Shenzhen Tenda Technology Co., Ltd. All rights reserved.

Tenda is a registered trademark legally held by Shenzhen Tenda Technology Co., Ltd. Other brand and product names mentioned herein are trademarks or registered trademarks of their respective holders. Specifications are subject to change without notice.

Tenda

Documents / Resources



[Tenda N301 Wireless Easy Setup Router](#) [pdf] Installation Guide

N301 Wireless Easy Setup Router, N301, Wireless Easy Setup Router, Easy Setup Router, Set up Router, Router