



Tenda IC7-LRS Better NetWorking Camera User Guide

[Home](#) » [Tenda](#) » Tenda IC7-LRS Better NetWorking Camera User Guide 

Contents

- [1 Tenda IC7-LRS Better NetWorking Camera](#)
- [2 Safety precautions](#)
- [3 INSTALLATION](#)
- [4 Install the camera](#)
- [5 Get support and services](#)
- [6 RECYCLING](#)
- [7 FCC Statement](#)
- [8 Technical Support](#)
- [9 Documents / Resources](#)
 - [9.1 References](#)
- [10 Related Posts](#)

Tenda

Tenda IC7-LRS Better NetWorking Camera



Safety precautions

Before operating, read the operation instructions and precautions to be taken, and follow them to prevent accidents. The warning and danger items in other documents do not cover all the safety precautions that must be followed. They are only supplementary information, and the installation and maintenance personnel need to understand the basic safety precautions to be taken.

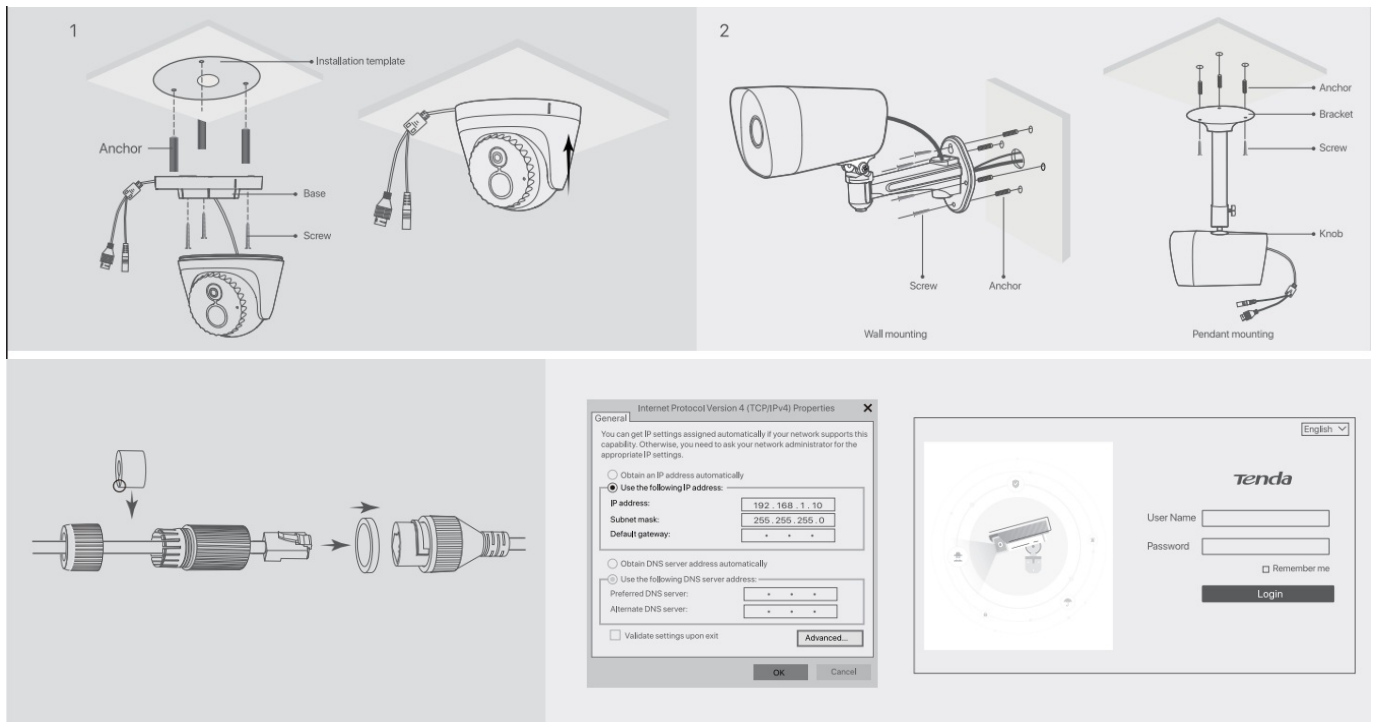
- The mains plug is used as the disconnect device and shall remain readily operable.
- The power socket shall be installed near the device and easily accessible.
 - **IC series:** Operating environment:
 - **Temperature:** 10°C – 50°C;
 - **Humidity:** (10% – 95%) RH, non-condensing;

Storage environment

- **Temperature:** -40°C – 70°C;
- **Humidity:** (3% – 95%) RH, non-condensing,
- **IT series:** Operating environment:
- **Temperature:** -20°C – 60°C;
- **Humidity:** (10% – 95%) RH, non-condensing;
- **Storage environment:** Temperature: -40°C – 70°C;
- **Humidity:** (3% – 95%) RH, | non-condensing.
- Keep the device away from water, fire, high electric field, high magnetic field, and inflammable and explosive items.
- Unplug this device and disconnect all cables when the device is unused for long periods.
- Do not use the power adapter if its plug or cord is damaged.
- If such phenomena as smoke, abnormal sound, or smell appear when you use the device, immediately stop using it and disconnect its power supply, unplug all connected cables, and contact the after-sales service personnel.

- Disassembling or modifying the device or its accessories without authorization voids the warranty and might cause safety hazards.
- For wall/ceiling/pendant mounting, the camera is suitable for mounting at heights > 2m.

INSTALLATION



Install the camera

Tips

- Please make sure the ceiling is strong enough to withstand three times the weight of the camera.
- You may need to prepare a hammer drill, a drill bit, a rubber hammer, a screwdriver, and a ladder for the installation.

IC series

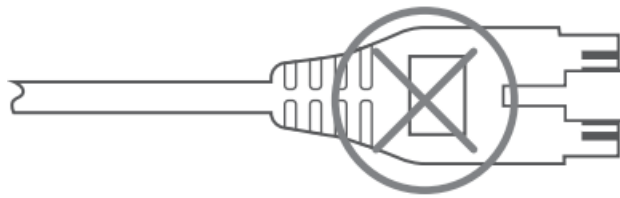
The camera supports ceiling and wall mounting. The ceiling mounting is taken as an example here.

IT series

- The camera supports wall and pendant mounting. The installation bracket required for the installation is not included in the package. Please purchase it by yourself.
- The bracket installation process may vary based on different manufacturers and models. The following figures are for reference only. Refer to the actual bracket.

C- Tips

The included waterproof kit does not apply to the Ethernet cable with the protection cover on the connector. The ethernet cable with protection over is shown below.



Log in to web UI

The camera can be managed on the web UI.

1. Connect the computer to the switch or router that is connected to the camera.
2. Set the IP address of the computer to an unused one belonging to the same network segment as the IP address of the camera but different from the IP address of the camera.

The following figure is for reference only.

- The camera supports three IP address acquisition methods: DHCP, Auto IP address and Fixed IP. By default, the camera works in the Auto IP address.

If you search for a camera on the web UI or GUI of an NVR in the network, the IP address of the camera will be automatically synchronized to the same network segment as the IP address of the NVR, you can view the current IP address of the camera on the web UI or GUI of the NVR. If not, the camera keeps the default IP address (192.168.1.203).

Tips

After the camera is stably added to the NVR for 24 hours, the IP address acquisition method of the camera will be automatically changed to Fixed IP.

3. Start a browser and enter the IP address of the camera in the address bar to access the login page. Enter the User Name (default: admin) and Password (default: admin123456), then click Login.

After successfully logging in to the web UI of the camera, you can start to configure the camera as required.

Tips

For network security, after you log in to the web UI, modify your username and password in time. If your camera has been successfully managed by the NVR, modifying the login username or password may cause the camera goina offline. Please operate with caution.

Get support and services

Scan the Product Documents QR code to get related documents for more information.

Tips: The specific product models can be found on the label of the device.



Product Documents

(such as a quick installation guide (complete version), user guide, and datasheet)

CE Mark Warning

- This is a Class A product. In a domestic environment, this product may cause radio interference, in which case the user may be required to take adequate measures.
- The mains plug is used as a disconnect device, the disconnect device shall remain readily operable.

NOTE: (1) The manufacturer is not responsible for any radio or TV interference caused by unauthorized modifications to this equipment. (2) To avoid unnecessary radiation interference, it is recommended to use a shielded RJ45 cable.

RECYCLING

- This product bears the selective sorting symbol for Waste electrical and electronic equipment (WEEE). This means that this product must be handled under European directive 2012/19/EU to be recycled or dismantled to minimize its impact on the environment.
- Users have the choice to give their product to a competent recycling organization or the retailer when they buy new electrical or electronic equipment.

FCC Statement

This equipment has been tested and found to comply with the limits for a Class A digital device, under Part 15 of the FCC Rules. These limits are designed to provide reasonable protection against harmful interference when the equipment is operated in a commercial environment. This equipment generates, uses, and can radiate radio frequency energy and, if not installed and used by the instruction manual, may cause harmful interference to radio communications. Operation of this equipment in a residential area is likely to cause harmful interference in which case the user will be required to correct the interference at his own expense.

Operation is subject to the following two conditions:

1. this device may not cause harmful interference,
2. this device must accept any interference received, including interference that may cause undesired operation.

Caution

Any changes or modifications not expressly approved by the party responsible for compliance could void the user's authority to operate the equipment.

NOTE:

The manufacturer is not responsible for any radio or TV interference caused by unauthorized modifications to this equipment. (2) To avoid unnecessary radiation interference, it is recommended to use a shielded RJ45 cable.

Technical Support

Shenzhen Tenda Technology Co., Ltd.

Floor 6-8, Tower E3, No.1001, Zhongshanyuan Road, Nanshan District, Shenzhen, China. 518052

- **USA hotline:** 1-800-570-5892

- **Toll Free:** 7 x 24 hours
- **Canada hotline:** 1-888-998-8966
- **Toll-Free:** Mon – Fri 9 am – 6 pm PST
- **Hong Kong hotline:** 00852-81931998
- **United Kingdom hotline:** +44 0800 041 8955
- **Global Hotline:** +86 755-2765 7180 (China Time Zone)
- **Website:** www.tendan.com

E-mail: tendasecurity@tenda.cn

support.fr@tenda.cn (Français)

support.it@tenda.cn (Italiano)

support.de@tenda.cn (Deutsch)

support.es@tenda.cn (Español)

support.uk@tenda.cn (United Kingdom)

Copyright

© 2022 Shenzhen Tenda Technology Co., Ltd. All rights reserved.

Tenda is a registered trademark legally held by Shenzhen Tenda Technology Co., Ltd. Other brand and product names mentioned herein are trademarks or registered trademarks of their respective holders. Specifications are subject to change without notice.

Documents / Resources

	Tenda IC7-LRS Better NetWorking Camera [pdf] User Guide IC7-LRS Better NetWorking Camera, IC7-LRS, Better NetWorking Camera, NetWorking Camera, Camera
--	---

References

- [User Manual](#)

[Manuals+](#), [Privacy Policy](#)

This website is an independent publication and is neither affiliated with nor endorsed by any of the trademark owners. The "Bluetooth®" word mark and logos are registered trademarks owned by Bluetooth SIG, Inc. The "Wi-Fi®" word mark and logos are registered trademarks owned by the Wi-Fi Alliance. Any use of these marks on this website does not imply any affiliation with or endorsement.