



Tenda E30 Wireless PCI Express Adapter Installation Guide

[Home](#) » [Tenda](#) » Tenda E30 Wireless PCI Express Adapter Installation Guide 

Tenda

Quick Installation Guide
Wireless PCI Express Adapter
E30 & E33 & E33 Pro

Contents

- [1 Package contents](#)
- [2 Install the Program](#)
- [3 Connect to a WiFi Network](#)
- [4 Connect Bluetooth](#)
- [5 Appendix](#)
- [6 FAQ](#)
- [7 Service and Support](#)
- [8 Safety Precautions](#)
- [9 Documents / Resources](#)
 - [9.1 References](#)
- [10 Related Posts](#)

Package contents

- Wireless adapter (with a high profile bracket) × 1
- Antenna × 2
- Bluetooth cable × 1
- Low profile bracket × 1
- Antenna base x 1 (Only equipped in some models)
- Quick installation guide × 1



Please read this guide before you start with the quick setup for this product upon the first use. For product details, please go to www.tendacn.com or scan the **Product Documents** QR code of this guide.

E33 Pro is used for illustration here unless otherwise specified. The actual product prevails. The product name and model are specified on the label of the device.

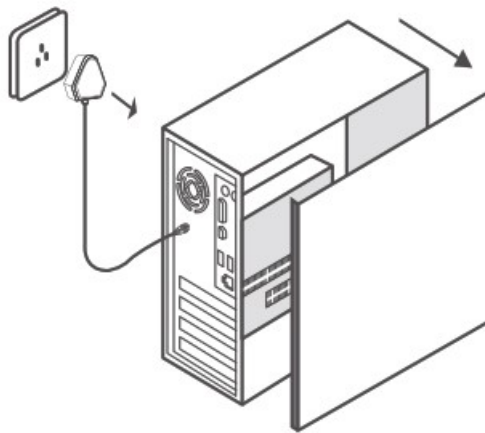


Tips

- Some wireless adapters are only compatible with the Windows 10 operating system while others may also support Windows 11. The actual product prevails.
- If you have installed a wireless adapter before, please uninstall the existing wireless adapter. By following the specific steps in Appendix.
- If the high profile bracket is too long for your PC case, you can use the low profile bracket in the package to install the wireless adapter.

Install the Wireless Adapter

1. Turn off the computer and disconnect the power, then remove the side panel of the PC case.

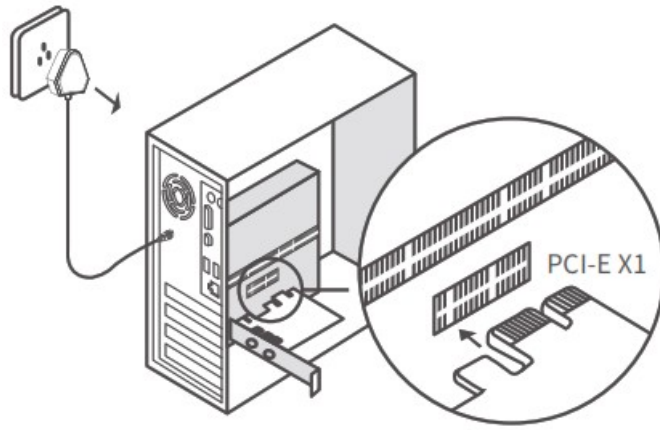


2. Select an available PCI-E X1 slot, and remove the bracket corresponding to the slot on the PC case. Then insert the wireless adapter into the selected slot, and make sure that the wireless adapter contacts the slot properly.



Note

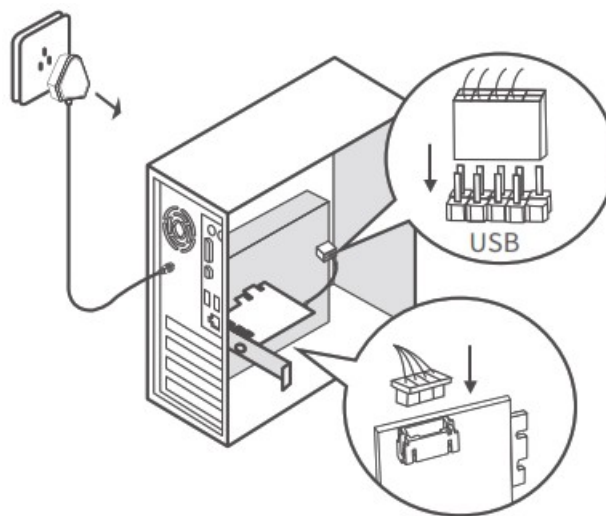
Do not touch the metal pins on the connector of the wireless adapter with your hands to prevent the wireless adapter from being burnt out by static electricity.



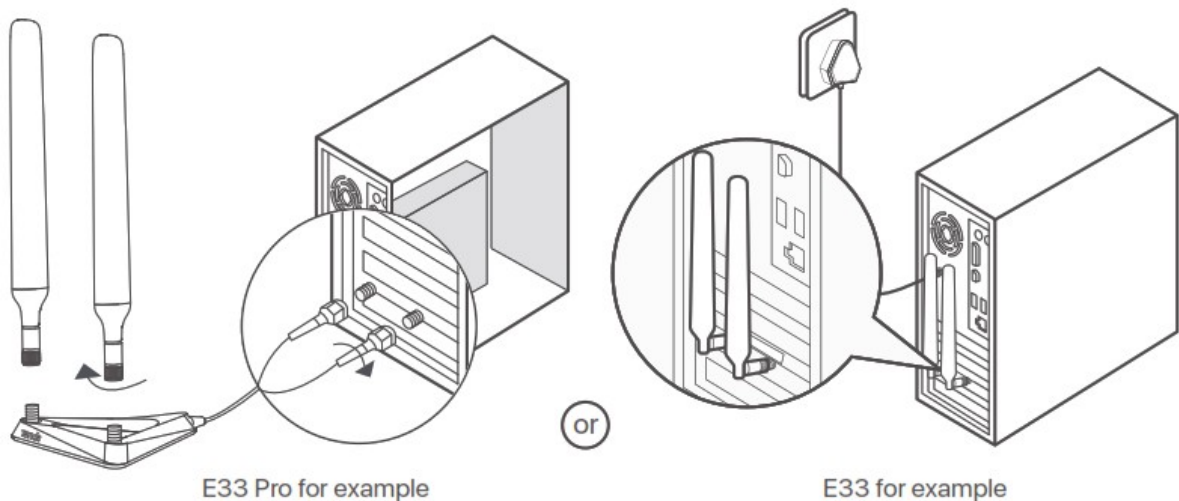
3. Connect the 4-hole end of the Bluetooth cable to the Bluetooth connector of the wireless adapter and the other end to the 9-pin connector with USB printing on the main board.

Tips

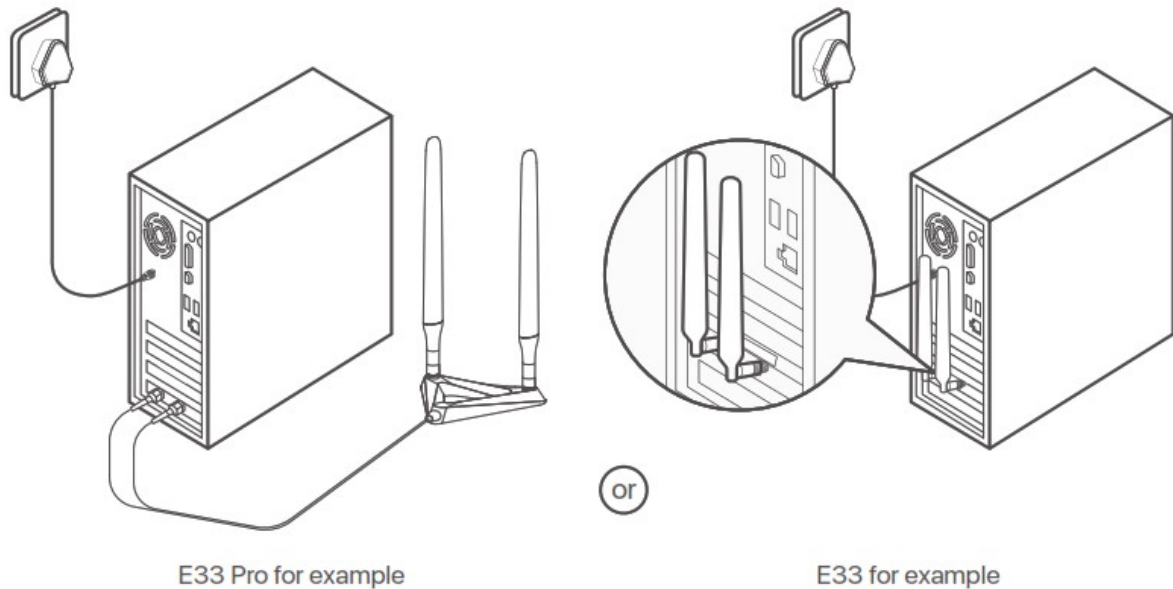
Ensure that the Bluetooth cable is connected properly at both ends.



4. Install the antennas to the wireless adapter.
 - If the wireless adapter is equipped with an antenna base, connect the extension cable of the antenna base to the antenna port of the wireless adapter, and then screw the antenna into the antenna port of the base respectively.
 - If the wireless adapter is not equipped with an antenna base, directly screw the antennas into the antenna ports of the wireless adapter.



5. Install the side panel of the PC case, then reconnect the computer to the power source and switch it on.



Install the Program

(Windows 10 64-bit Used as an Example)



Tips

If the wireless adapter is equipped with a CD resource and the computer has a CD drive, you can refer to the following steps to install the program:

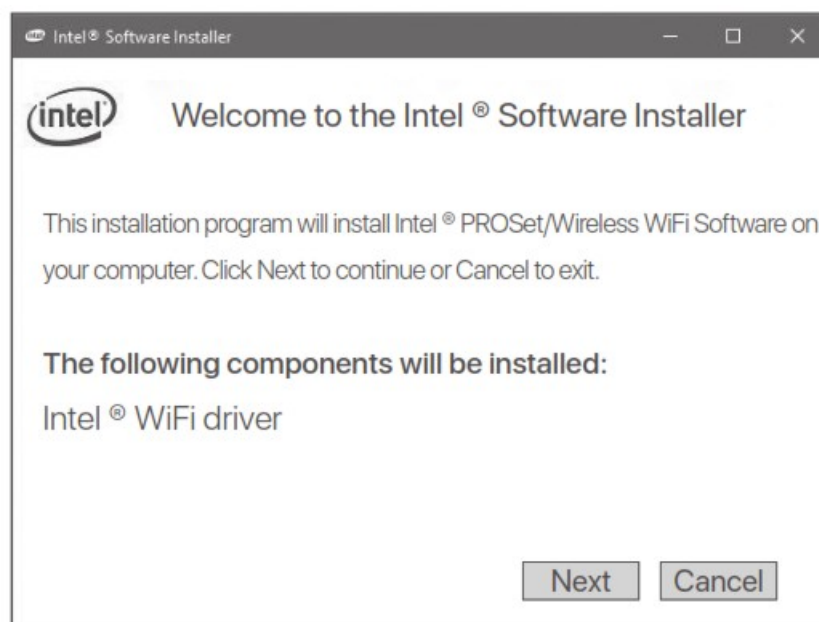
1. Insert the CD resource into the CD drive of your computer.
2. Open the root directory of the CD resource, double-click the corresponding program, and then follow the onscreen prompts.

1. Download the program.

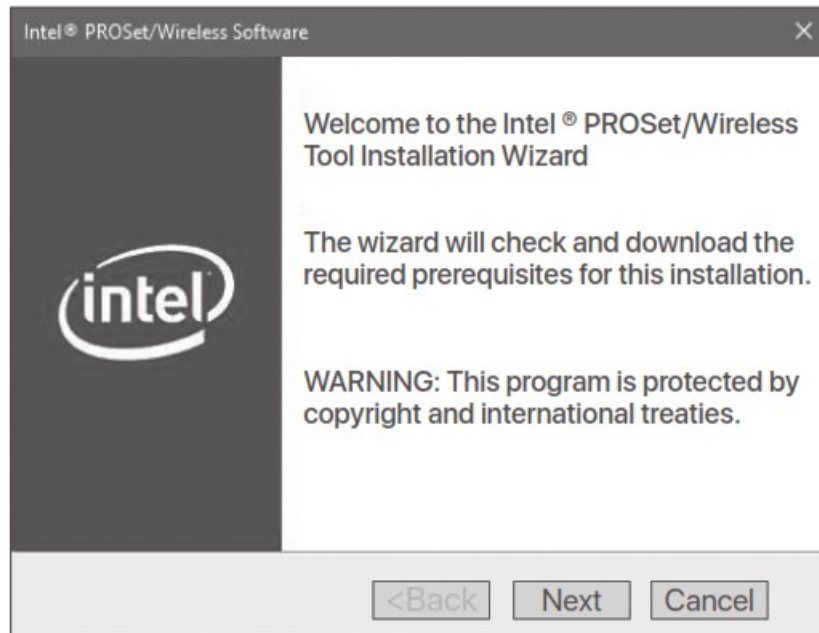
Go to www.tendacn.com, search for the model of the wireless adapter, and then enter its Download page to download the program to your local computer and unzip it.

2. Install the WiFi driver.

Double-click the driver WiFi_XXX_Driver64_Win10.exe, and then follow the prompts.




3. Install the Bluetooth driver. Double-click the driver BT_XXX_Driver64_Win10.exe, and then follow the prompts.



Connect to a WiFi Network

(Windows 10 Used as an Example)

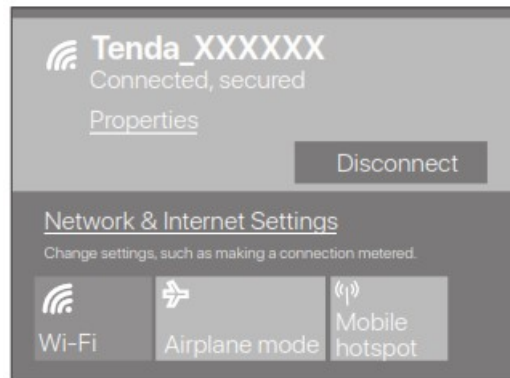
1. Click  in the bottom right corner of your screen, select the desired WiFi network and then click **Connect**.



2. If the wireless network is encrypted, enter its wireless password, click Next, and then follow the system prompts.




Connected successfully.



Connect Bluetooth

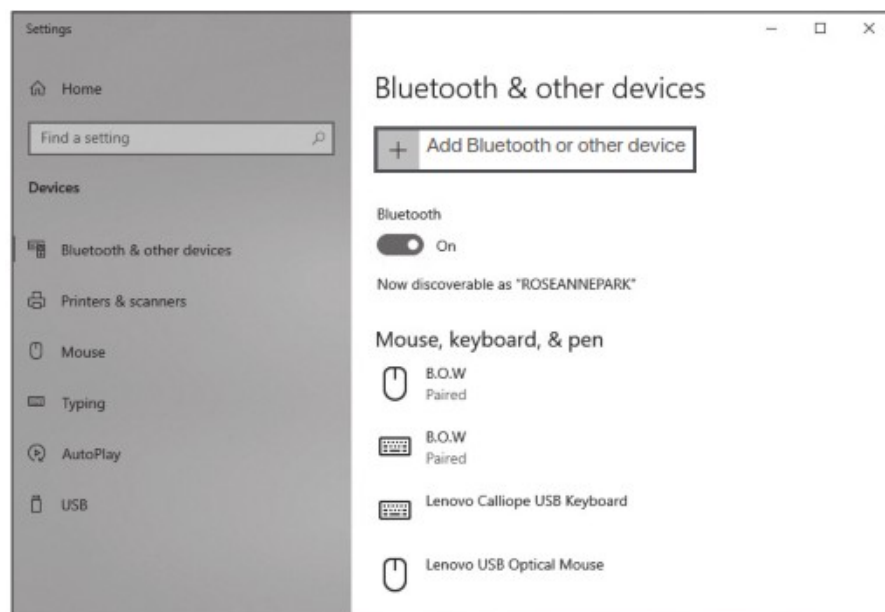
(Windows 10 Used as an Example)

1. Turn on Bluetooth for the device to be connected, such as a wireless mouse and wireless stereo.
2. Turn on Bluetooth for the wireless adapter.

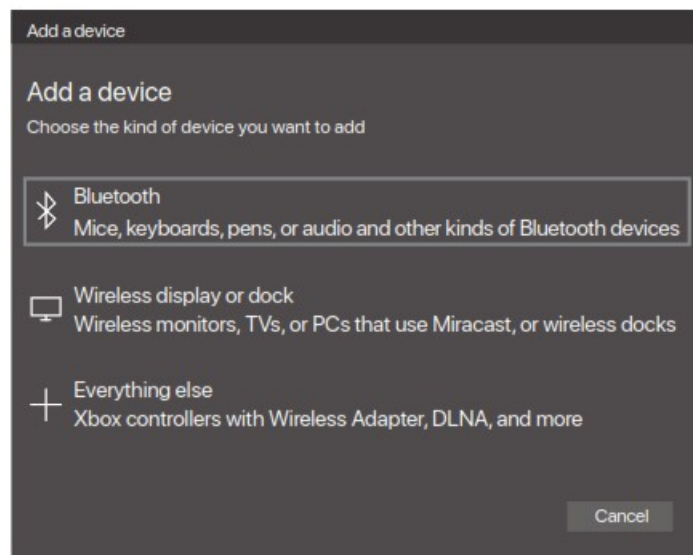
(1) Click  in the bottom right corner of your screen, and click Add a Bluetooth Device.



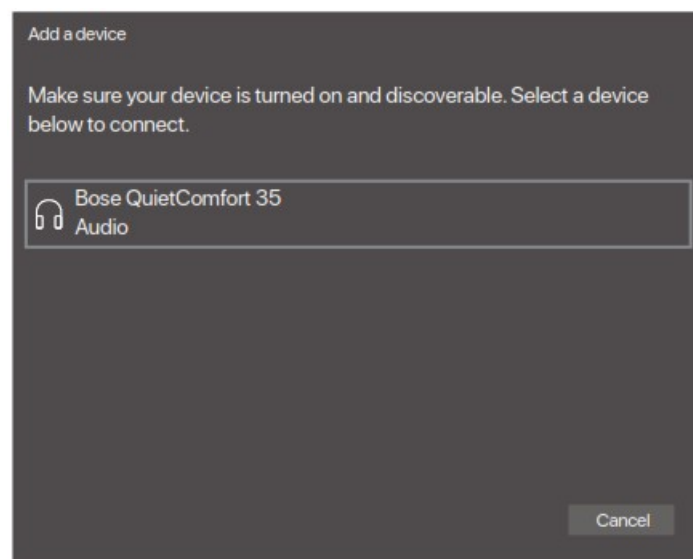
(2) Click Add Bluetooth or other device.



(3) Click Bluetooth.



(4) Click the desired Bluetooth device to connect to.





Tips

If you cannot find the desired Bluetooth device to connect to, try the following solutions:

- Place the device close to the wireless adapter.
- Restart Bluetooth for the device.

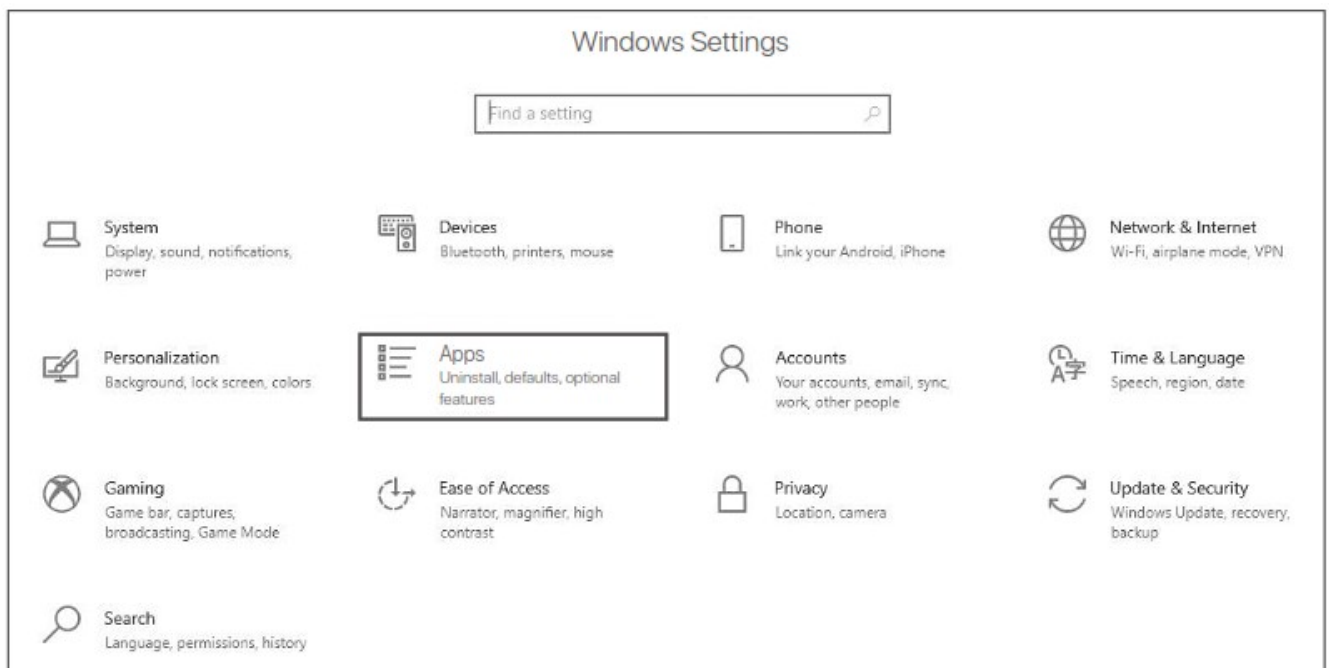
Appendix

Uninstall the existing wireless adapter driver on your computer. (Windows 10 used as an example)

1. Click  in the bottom left corner of your screen, and then click .



2. Click **Apps**.



3. Find and uninstall any other existing wireless adapter drivers.

FAQ

The computer cannot identify the installed wireless adapter. What should I do?

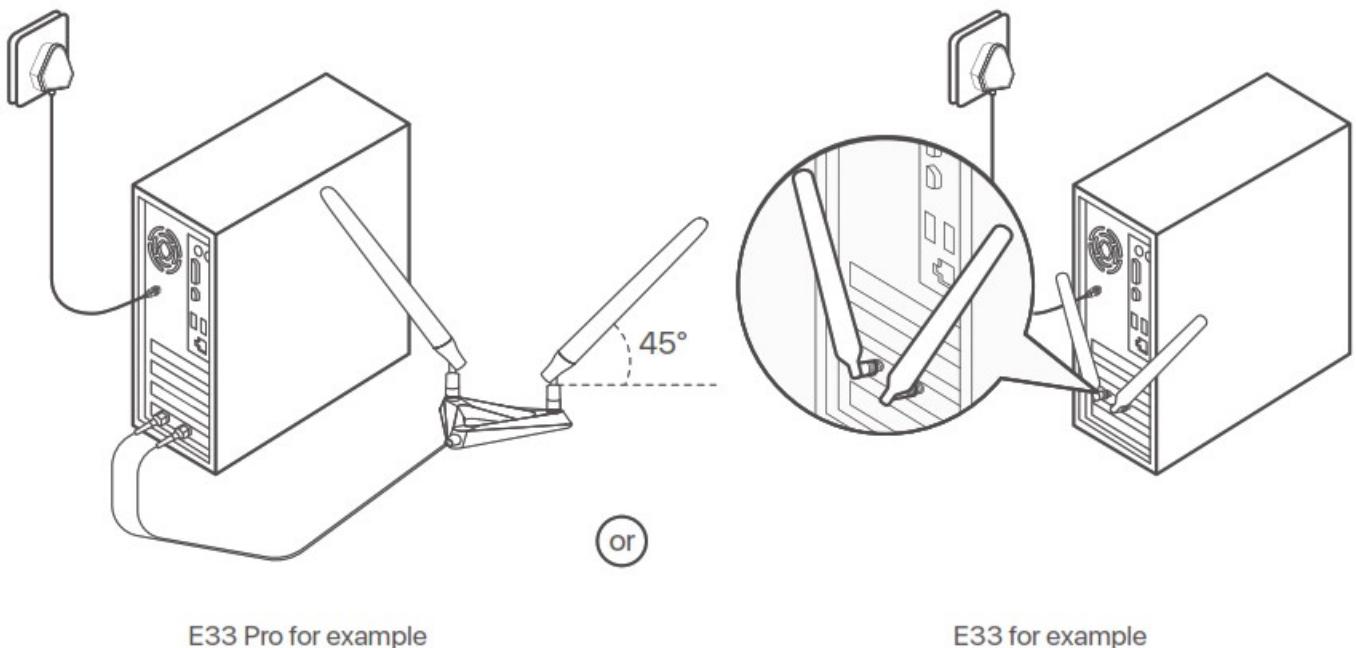
Try the following solutions:

- Wipe the metal pins of the wireless adapter's PCI-E interface with an eraser.
- Use another PCI-E X1 slot.
- If the computer still cannot identify the wireless adapter, please contact the reseller.

I cannot use the wireless USB adapter after it is installed into my computer. What should I do?

Try the following solution:

- Disable the wireless adapter and then enable it.
- Refer to the appendix to uninstall the WiFi program of the wireless adapter, and then reinstall the program.



When the wireless adapter is used, the network speed is slow. What should I do?

Try to adjust the antenna angle of the wireless adapter.

Service and Support

Scan the **Product Documents** QR code to get related documents for more information.



Tips

The specific product model can be found on the label of the device.



<https://ma.tenda.com.cn/procata/27.html>

Product Documents (such as datasheet and quick installation guide)



CE Mark Warning

This is a Class B product. In a domestic environment, this product may cause radio interference, in which case the user may be required to take adequate measures.

Operations in the 5150-5350MHz band are restricted to indoor use only.

NOTE: (1) The manufacturer is not responsible for any radio or TV interference caused by unauthorized modifications to this equipment. (2) To avoid unnecessary radiation interference, it is recommended to use a shielded RJ45 cable.

Declaration of Conformity

Hereby, SHENZHEN TENDA TECHNOLOGY CO., LTD. declares that the device is in compliance with Directive 2014/53/EU.

The full text of the EU declaration of conformity is available at the following internet address:

<https://www.tendacn.com/download/list-9.html>

Operating Frequency: BTL: EU/2402-2480MHz (E30 & E33 & E33 Pro)

2.4 GHz: EU/2412-2472MHz (E30 & E33 & E33 Pro)

5 GHz: EU/5150-5350MHz, 5470-5725MHz, 5725-5850MHz (E30 & E33 & E33 Pro)

6 GHz: EU/5955-6415MHz (E33 & E33 Pro)

EIRP Power (Max.): (E30)

2.4 GHz 20dBm

5 GHz 20dBm

EIRP Power (Max.): (E33 & E33 Pro)

2.4 GHz 20dBm

5 GHz 23dBm

6 GHz 23dBm

Software Version: V21.90.X (E30)

Software Version: V22.140.X (E33 & E33 Pro)



FCC Statement

This equipment has been tested and found to comply with the limits for a Class B digital device, pursuant to Part 15 of the FCC Rules. These limits are designed to provide reasonable protection against harmful interference in a residential installation. This equipment generates, uses and can radiate radio frequency energy and, if not installed and used in accordance with the instructions, may cause harmful interference to radio communications. However, there is no guarantee that interference will not occur in a particular installation. If this equipment does cause harmful interference to radio or television reception, which can be determined by turning the equipment off and on, the user is encouraged to try to correct the interference by one or more of the following measures:

- Reorient or relocate the receiving antenna.
- Increase the separation between the equipment and receiver.
- Connect the equipment into an outlet on a circuit different from that to which the receiver is connected.
- Consult the dealer or an experienced radio/TV technician for help.

The device is for indoor usage only.

Operation is subject to the following two conditions: (1) this device may not cause harmful interference, and (2) this device must accept any interference received, including interference that may cause undesired operation.

Radiation Exposure Statement

This device complies with FCC radiation exposure limits set forth for an uncontrolled environment and it also complies with Part 15 of the FCC RF Rules.

Caution:

Any changes or modifications not expressly approved by the party responsible for compliance could void the user's authority to operate this equipment.


This transmitter must not be co-located or operating in conjunction with any other antenna or transmitter.

Operating frequency: BTL: 2402-2480MHz, 2.4GHz: 2412-2462MHz, 5GHz: 5150-5350MHz, 5470-5725MHz, 5725-5850MHz (E30)

Operating frequency: BTL: 2402-2480MHz, 2.4GHz: 2412-2462MHz, 5GHz: 5150-5350MHz, 5470-5725MHz, 5725-5850MHz, 5955-6415MHz (E33 & E33 Pro)

NOTE: (1) The manufacturer is not responsible for any radio or TV interference caused by unauthorized modifications to this equipment. (2) To avoid unnecessary radiation interference, it is recommended to use a shielded RJ45 cable.

For EU/EFTA, this product can be used in the following countries:

	BE	BG	CZ	DK	DE	EE	IE	EL	ES	FR	HR	IT	CY	LV
LT	LU	HU	MT	NL	AT	PL	PT	RO	SI	SK	FI	SE	UK(NI)	



Safety Precautions

Before performing an operation, read the operation instructions and precautions to be taken, and follow them to prevent accidents. The warning and danger items in other documents do not cover all the safety precautions that

must be followed. They are only supplementary information, and the installation and maintenance personnel need to understand the basic safety precautions to be taken.

- Do not use the device in a place where wireless devices are not allowed.
- Operating environment: Temperature: 0°C – 40°C; Humidity: (10% – 90%) RH, non-condensing; Storage environment: Temperature: -40°C – 70°C; Humidity: (5% – 90%) RH, non-condensing.
- Keep the device away from water, fire, high electric field, high magnetic field, and inflammable and explosive items.
- If such phenomena as smoke, abnormal sound or smell appear when you use the device, immediately stop using it and disconnect its power supply, unplug all connected cables, and contact the after-sales service personnel.
- Disassembling or modifying the device or its accessories without authorization voids the warranty, and might cause safety hazards.



RECYCLING

This product bears the selective sorting symbol for Waste electrical and electronic equipment (WEEE). This means that this product must be handled pursuant to European directive 2012/19/EU in order to be recycled or dismantled to minimize its impact on the environment.

User has the choice to give his product to a competent recycling organization or to the retailer when he buys a new electrical or electronic equipment.

Technical Support

Shenzhen Tenda Technology Co., Ltd.

Floor 6-8, Tower E3, No.1001, Zhongshanyuan Road, Nanshan District, Shenzhen, China. 518052

USA hotline: 1-800-570-5892

Toll Free: 7 x 24 hours

Canada hotline: 1-888-998-8966

Toll Free: Mon – Fri 9 am – 6 pm PST

Hong Kong hotline: 00852-81931998

Global hotline: +86 755-2765 7180 (China Time Zone)

Website: www.tendacn.com

E-mail: support@tenda.com.cn

Copyright

© 2022 Shenzhen Tenda Technology Co., Ltd. All rights reserved.

Tenda is a registered trademark legally held by Shenzhen Tenda Technology Co., Ltd. Other brand and product names mentioned herein are trademarks or registered trademarks of their respective holders. Specifications are subject to change without notice.

V1.1 Keep for future reference.

Documents / Resources



[Tenda E30 Wireless PCI Express Adapter](#) [pdf] Installation Guide

E30 Wireless PCI Express Adapter, E30, Wireless PCI Express Adapter, Express Adapter, Adapter

References

-  [Tenda US](#)
-  [CE Center-Tenda-All For Better NetWorking](#)