



# Tenda E12 AC1200 Wireless PCI Express Adapter Installation Guide

[Home](#) » [Tenda](#) » Tenda E12 AC1200 Wireless PCI Express Adapter Installation Guide 

# *Tenda*

## Quick Installation Guide AC1200 Wireless PCI Express Adapter E12

### Contents

- [1 Package contents](#)
- [2 Hardware installation](#)
- [3 Install WiFi driver and connect to a WiFi network](#)
- [4 Connect to a WiFi network](#)
- [5 Appendix](#)
- [6 FAQ](#)
- [7 Technical Support](#)
- [8 Documents / Resources](#)
- [9 Related Posts](#)

### Package contents

- Wireless adapter (with a high profile bracket) × 1
- Antenna × 2
- Driver CD × 1
- Low profile bracket × 1
- Quick installation guide × 1

The guide walks you through installation and how to perform first-time configurations. For product details, please

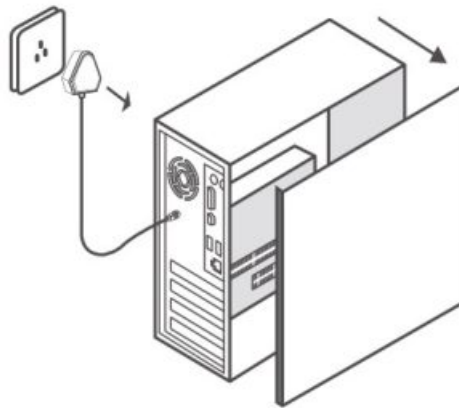


### Tips

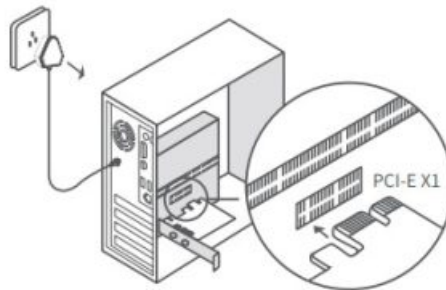
- This wireless adapter only supports Windows 10 operating system.
- If you have installed a wireless adapter before, please uninstall the existing wireless adapter. Refer to the appendix for specific steps.
- If the high profile bracket is too long for your PC case, you can use the low profile bracket in the package to install the wireless adapter.

## Hardware installation

1. Turn off the computer and disconnect the power, then remove the side panel of the PC case.



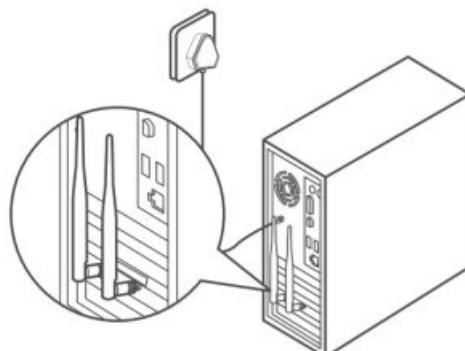
2. Select an available PCI-E X1 slot, and remove the bracket corresponding to the slot on the PC case. Then insert the wireless adapter into the selected slot, and make sure that the wireless adapter contacts with the slot properly.



### Note

Do not touch the metal pins on the connector of the wireless adapter with your hands to prevent the wireless adapter from being burnt out by static electricity.

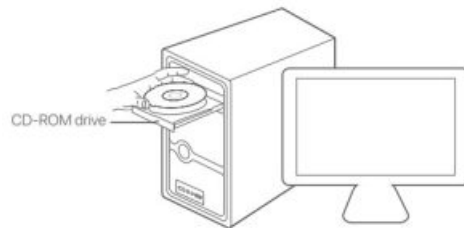
3. Install the antennas to the wireless adapter. Install the side panel of the PC case, then reconnect the computer to the power source and switch it on.



## Install WiFi driver and connect to a WiFi network

### Install the WiFi driver

1. Put the CD in your computer's CD-ROM drive.



#### Tips

If there is no CD drive on your computer, you can download the WiFi driver of this wireless adapter through the following methods.

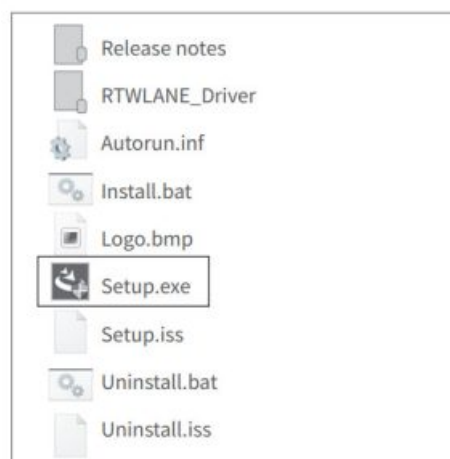
Method 1: Visit <https://www.tendacn.com/en/download/detail-3788.html> to download the WiFi driver.

Method 2: Scan the QR code below to download the WiFi driver. If the WiFi driver cannot be downloaded through the WeChat QR code, it is recommended to try a browser.

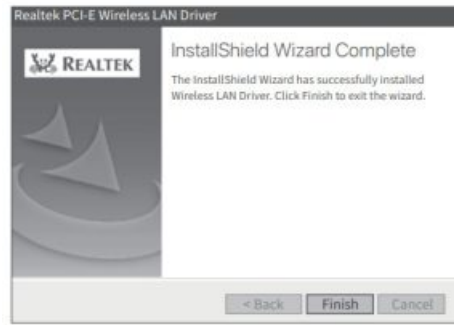


<https://www.tendacn.com/en/download/detail-3788.html>


2. Access the contents of the CD. Double-click the driver Setup.exe and the program will be installed automatically.



√ Installation completed.



## Connect to a WiFi network

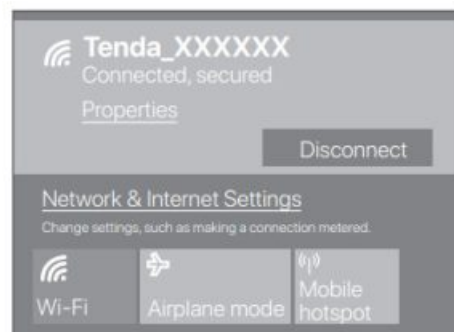
1. Click  in the lower right corner on the desktop. Choose the WiFi network you need to connect and click Connect.



2. If the wireless network is encrypted, enter its wireless password, click Next, and then follow the system prompts.





Connected successfully.



## Appendix

**Uninstall the wireless adapter driver you already had on your computer.**

1. Click  in the lower-left corner of the desktop. Click .



2. Click **Apps**.



3. Find and uninstall any other installed wireless adapter drivers.

## FAQ

Q1: After the completion of hardware installation, the computer can not identify the wireless adapter, what should I do?

A1: Please try the following solutions:

- Wipe the metal pins of the wireless adapter's PCI-E interface with an eraser.
- Use another PCI-E X1 slot.
- If the computer still cannot identify the network card, please contact the reseller.

## Technical Support

Shenzhen Tenda Technology Co., Ltd.  
6-8 Floor, Tower E3, NO.1001, Zhongshanyuan Road, Nanshan District,  
Shenzhen, China. 518052  
USA hotline: 1-800-570-5892  
Toll-Free: 7 x 24 hours  
Canada hotline: 1-888-998-8966  
Toll Free: Mon – Fri 9 am – 6 pm PST  
Hong Kong hotline: 00852-81931998  
Global Hotline: +86 755-2765 7180 (China Time Zone)  
Website: [www.tendacn.com](http://www.tendacn.com)  
E-mail: [support@tenda.com.cn](mailto:support@tenda.com.cn)

### Copyright

© 2020 Shenzhen Tenda Technology Co., Ltd. All rights reserved.

Tenda is a registered trademark legally held by Shenzhen Tenda Technology Co., Ltd. Other brand and product names mentioned herein are trademarks or registered trademarks of their respective holders. Specifications are subject to change without notice.

Operating Temperature: 0°C – 40°C

Operating Humidity: (10% – 90%) RH, non-condensing



#### **CE Mark Warning**

This is a Class B product. In a domestic environment, this product may cause radio interference, in which case the user may be required to take adequate measures.

Operations in the 5.15-5.25GHz band are restricted to indoor use only.

#### **Declaration of Conformity**

Hereby, SHENZHEN TENDA TECHNOLOGY CO., LTD. declares that the radio equipment type E12 is in compliance with Directive 2014/53/EU.

The full text of the EU declaration of conformity is available at the following internet address:

<http://www.tendacn.com/en/service/download-cata-101.html>

#### **Operating Frequency:**

2.4 GHz: EU/2400-2483.5MHz (CH1-CH13)

5 GHz: EU/5150-5250MHz (CH36-CH48)

#### **EIRP Power (Max.):**

2.4 GHz 20dBm

5 GHz 20dBm

Software Version: V1.0.0.1



#### **FCC Statement**

This equipment has been tested and found to comply with the limits for a Class B digital device, pursuant to Part 15 of the FCC Rules. These limits are designed to provide reasonable protection against harmful interference in a residential installation. This equipment generates, uses, and can radiate radio frequency energy and, if not installed and used in accordance with the instructions, may cause harmful interference to radio communications. However, there is no guarantee that interference will not occur in a particular installation. If this equipment does cause harmful interference to radio or television reception, which can be determined by turning the equipment off and on, the user is

encouraged to try to correct the interference by one or more of the following measures:

- Reorient or relocate the receiving antenna.
- Increase the separation between the equipment and receiver.
- Connect the equipment into an outlet on a circuit different from that to which the receiver is connected.
- Consult the dealer or an experienced radio/TV technician for help.

The device is for indoor usage only.

Operation is subject to the following two conditions: (1) this device may not cause harmful interference, and (2) this device must accept any interference received, including interference that may cause undesired operation.



#### **Radiation Exposure Statement**

This device complies with FCC radiation exposure limits set forth for an uncontrolled environment and it also complies with Part 15 of the FCC RF Rules.

This equipment should be installed and operated with a minimum distance of 20cm between the device and your body.

#### **Caution:**

Any changes or modifications not expressly approved by the party responsible for compliance could void the user's authority to operate this equipment.

This transmitter must not be co-located or operating in conjunction with any other antenna or transmitter.

Operating frequency: 2412-2462MHz, 5150-5250MHz, 5725-5850MHz

**NOTE:** (1) The manufacturer is not responsible for any radio or TV interference caused by unauthorized modifications to this equipment. (2) To avoid unnecessary radiation interference, it is recommended to use a shielded RJ45 cable.

**For EU/EFTA, this product can be used in the following countries:**

	BE	BG	CZ	DK	DE	EE	IE	EL	ES	FR	HR	IT	CY	LV
	LT	LU	HU	MT	NL	AT	PL	PT	RO	SI	SK	FI	SE	UK



**RECYCLING**

This product bears the selective sorting symbol for waste electrical and electronic equipment (WEEE). This means that this product must be handled pursuant to European directive 2012/19/EU in order to be recycled or dismantled to minimize its impact on the environment.

User has the choice to give his product to a competent recycling organization or to the retailer when he buys new electrical or electronic equipment.

**Documents / Resources**

	<a href="#">Tenda E12 AC1200 Wireless PCI Express Adapter</a> [pdf] Installation Guide E12, AC1200, Wireless PCI Express Adapter
--	---