



Tenda D301 Router wireless Modem Router User Guide

[Home](#) » [Tenda](#) » Tenda D301 Router wireless Modem Router User Guide 

Contents

- [1 Tenda D301 Router wireless Modem Router](#)
- [2 HARDWARE INSTALL](#)
- [3 CONFIGURE ROUTER](#)
- [4 FAQs](#)
- [5 Documents / Resources](#)
 - [5.1 References](#)
- [6 Related Posts](#)

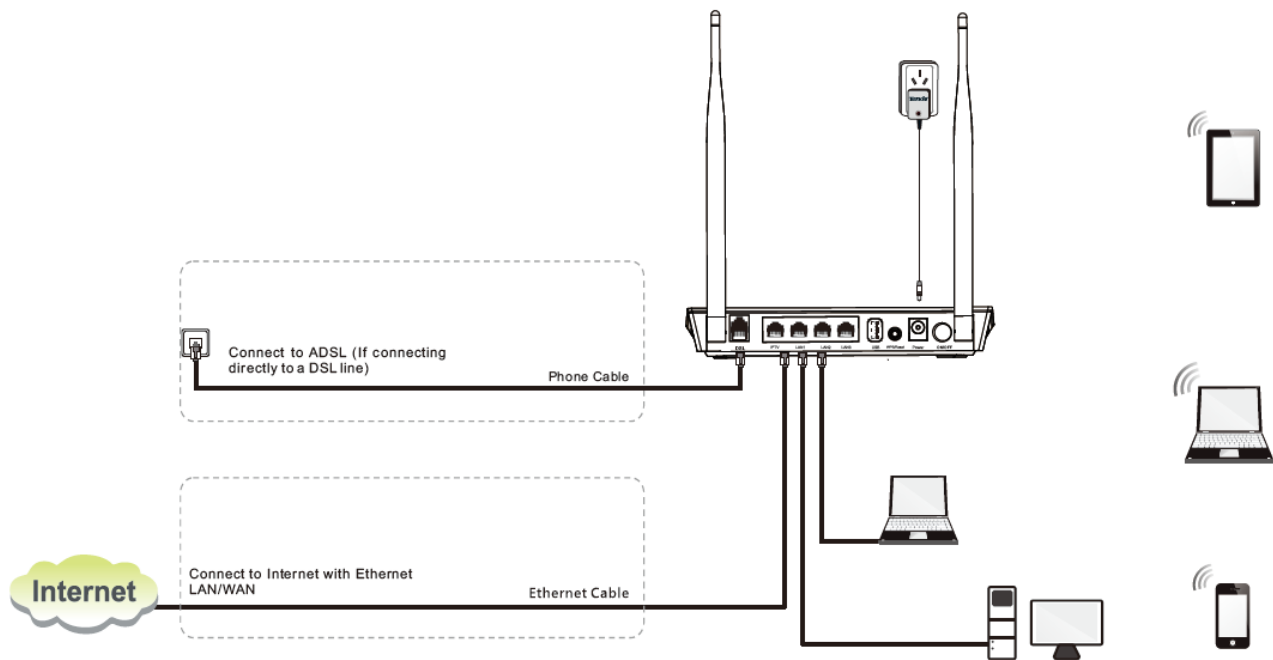
Tenda®

Tenda D301 Router wireless Modem Router



HARDWARE INSTALL

Product images and pictures herein are for references only.



This quick install guide applies to the following four models: D301, D302, D152 and D151. The D301 is used as an example here.

The differences between the four products are listed below:

Model	Wireless Speed	USB Port	Rj45 Ports
D301	300M	1	4
D302	300M	none	2
D151	150M	none	4
D152	150M	none	2


CONFIGURE ROUTER

You can log in to the modem router's web manager with the Setup Wizard on the included CD automatically or using a web browser manually. The Setup Wizard on the auto-run CD can automatically configure your PC's TCP/IP properties and direct you to the web login window without requiring the IP address.

[Login/Reset Instructions](#)

1. Log in to Web Manager

Using Setup Wizard

1. Insert the included resource CD into your computer's drive and the CD automatically runs. If the CD does not run automatically, double click . You will see the screen below.
2. Click **Run** and it will automatically configure your PC's TCP/IP properties. If your PC is successfully configured, the login window below will display.

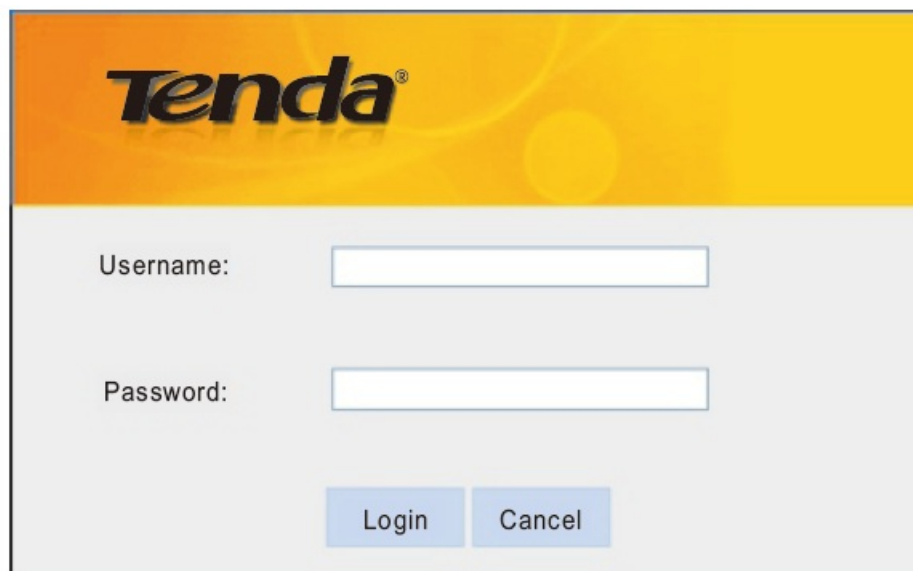


Using Browser

1. Set your PC to **Obtain an IP address automatically**. For more information, see **Appendix 1 Configure Your PC**.
2. Launch a web browser and enter **192.168.1.1** to display the login window.



1. Enter admin in both the login User Name and Password boxes to enter the screen below if you first time access the router.

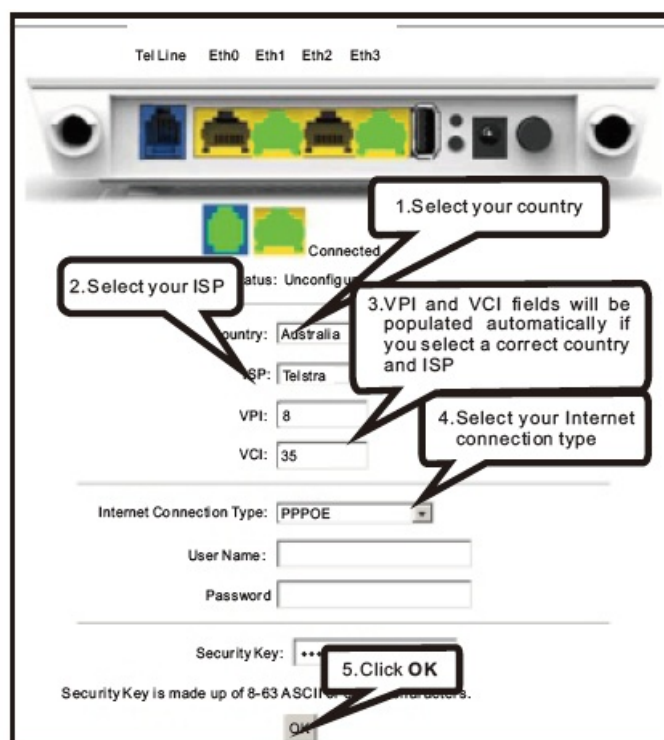


Tenda®

Username:

Password:

2. Internet Setup



Tel Line Eth0 Eth1 Eth2 Eth3

1. Select your country

2. Select your ISP

3. VPI and VCI fields will be populated automatically if you select a correct country and ISP

4. Select your Internet connection type

5. Click OK

Country: Australia

ISP: Telstra

VPI: 8

VCI: 35

Internet Connection Type: PPPOE

User Name:

Password:

Security Key:

Security Key is made up of 8-63 ASCII characters.

Depending on the type of connection, you are prompted to enter your ISP settings, as shown in the following table:

Internet Connection Type		ISP Information
PPPoE PPPoA		Enter the ISP login user name and password. If you cannot locate this information, ask your ISP to provide it.
IPoE	Dynamic IP	No entries are needed.
	Static (Fixed) IP	Enter the assigned IP address, subnet mask, and the IP address of your ISP's primary DNS server. This information should have been provided to you by your ISP. If a secondary DNS server address is available, enter it also.
IPoA	Static (Fixed) IP	Enter the assigned IP address, subnet mask, and the IP address of your ISP's primary DNS server. This information should have been provided to you by your ISP. If a secondary DNS server address is available, enter it also.

Note:

1. If your country and/or your ISP are not covered on the home page, please click the button on the home page and then select Advanced Setup -> Layer2 Interface -> ATM Interface and then click Add there to manually configure the VPI and VCI. If you cannot locate this information, ask your ISP to provide it. For more information, see the User Guide.
2. The Internet Setup in this Quick Install Guide applies only to ADSL Uplink mode. If you are not directly connecting to the ADSL line via a phone cable, please click the button on the home page and then select Advanced Setup -> Layer2 Interface -> ETH Interface. For more information, see the User Guide.

Test Internet Connectivity

Launch a web browser and enter www.tendacn.com. If the webpage below displays, you are connected to Internet.

Wireless Security Setup

For security purpose, we strongly recommend you to customize a new security key. Simply enter 8-63 ASCII or 64 hex characters.

Tip:

1. If you customize a new security key, write it on a sticky label and attach it to the bottom of the unit. You will

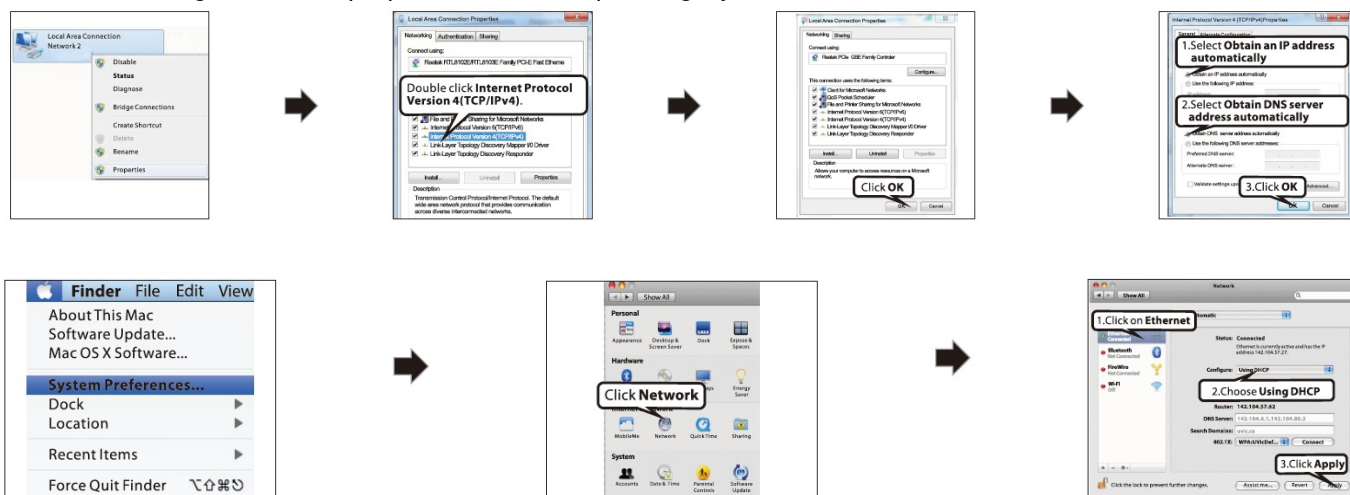
need the new security key if you wish to connect to the device wirelessly in the future.

2. To join your secured wireless network, see Appendix 2 Join Your Wireless Network.

3. For setup of advanced features, see User Guide.

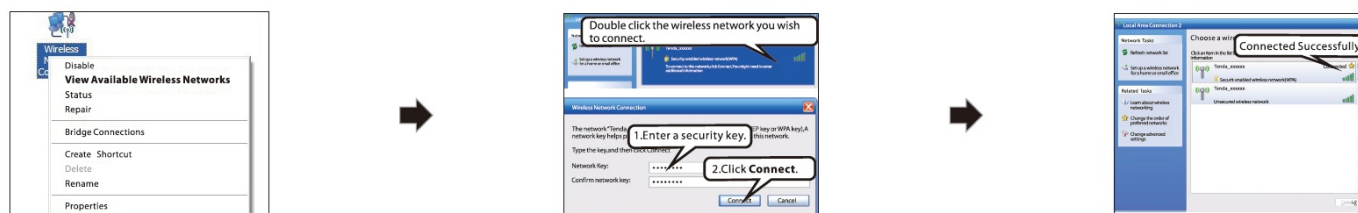
Appendix1: Configure Your PC

Screens to configure TCP/IP properties in other Operating Systems are similar to those below.

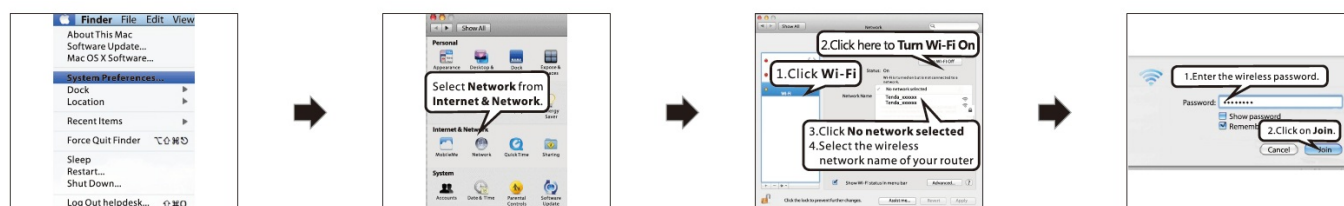


Appendix2: Join Your Wireless Network

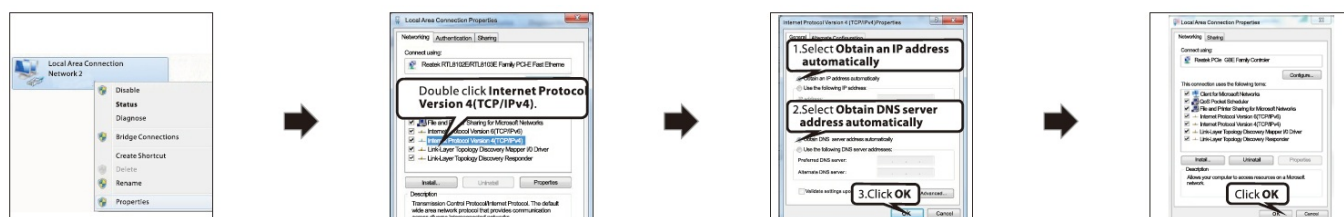
WINDOWS XP



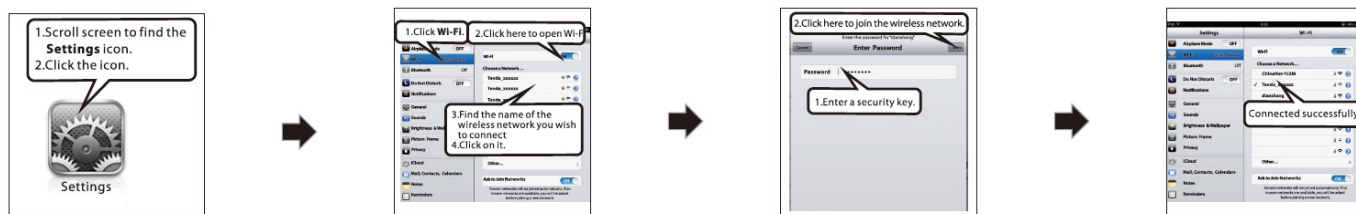
MAC



WINDOWS 7



IPHONE/ iPad:



FAQs

1. What information should I have to access Internet via the ADSL uplink?

If you have DSL broadband service, you might need the following information to set up your modem router.

- Active Internet service provided by an ADSL account
- The ISP configuration information for your DSL account
 - ISP login name and password
 - Fixed or static IP address
- Depending on how your ISP set up your Internet account, you could need to know the Virtual path identifier (VPI) and virtual channel identifier (VCI) parameters for a manual setup.

2. I cannot access the device's management interface. What should I do?

Verify the physical connection (namely, the Ethernet cable) between your PC and the device. For details, see Hardware Install hereof. Double check the TCP/IP settings on your PC. For details, see Appendix 1. Configure PC hereof. Press the Reset button on the device and then re-access the management interface. Change the Ethernet cable that connects your PC and the device. Try accessing device management interface from other PCs, smart phones or iPads. Connect your PC alone to one of the LAN ports on the device.

3. I forget the wireless security key. What should I do? (How do I configure or change the security key?)

Try the default security key, which can be seen from the label attached to the device bottom. If step 1 that works, access the device web manager and customize a new security key. If step 1 does not work, press the Reset button on the device to restore factory default settings. And then log in to the device web manager to customize a new security key.

4. My notebook is unable to search wireless networks, what should I do?

1. Verify that wireless service is enabled on your notebook by checking the wireless hardware or software button on your notebook. The hardware button is usually located on the side of your notebook. Note that some notebooks may not have such hardware button. Software button can be implemented by pressing Fn+ Fn is situated on the bottom left corner of your keyboard, may be any key between F1-F12 depending on what type of keyboard you are using. Log in to the device, select Advanced-> Wireless-> Basic and change the wireless network name (SSID). Then search again. Follow below steps to verify that wireless service is enabled on your notebook (for Windows XP OS only). From the desktop, right-click on the My Computer icon and select Manage. Select Services and Applications, double click Services and view the status of Wireless Zero Configuration. If Status dose not display Started, right click the Wireless Zero Configuration and select Start; if Startup Type displays Disabled, right click the Wireless Zero Configuration, select Properties; from the Startup Type drop-down list box, select Automatic and then click Start in Service Status.

5. Why cannot I connect to the searched wireless network?

Verify that you entered a correct security key.

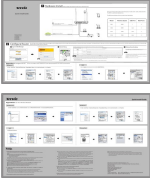
Log in to the device, select Advanced-> Wireless and change the wireless network name (SSID). Then connect again. Log in to the device, select Advanced-> Wireless-> Security and change the security settings.

Then connect again.

6. Where should I place the wireless device for optimum performance?

1. Place it in the center to extend wireless coverage as far as possible.
2. Never place the device near to metal objects or in direct sunshine.
3. Keep it far away from devices that use the 2.4 GHz radio wave frequency to transmit and receive data, such as 802.11g/n wireless network devices, electronic devices such as cell phones, radio transmitters, blue tooth, cordless phones, fax machine, refrigerator and microwaves to avoid electronic interference.

Documents / Resources

	<p>Tenda D301 Router wireless Modem Router [pdf] User Guide D301 Router wireless Modem, D301, Router wireless Modem, wireless Modem, Modem</p>
---	--

References

-  [Tenda US](#)