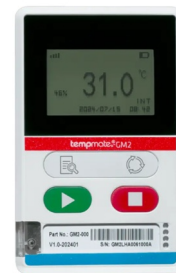


tempmate®

GM2
Rechargeable
Data Logger



tempmate GM2 Rechargeable Data Logger User Manual

[Home](#) » [tempmate](#) » tempmate GM2 Rechargeable Data Logger User Manual 

Contents

- [1 tempmate GM2 Rechargeable Data Logger](#)
- [2 Product Usage Instructions](#)
- [3 Device Description](#)
- [4 Accessories](#)
- [5 Display Description](#)
- [6 Start Guide tempmate.®-Cloud](#)
- [7 Operation and Usage](#)
- [8 FAQ](#)
- [9 Documents / Resources](#)
 - [9.1 References](#)
- [10 Related Posts](#)

tempmate®

tempmate GM2 Rechargeable Data Logger



Specifications:

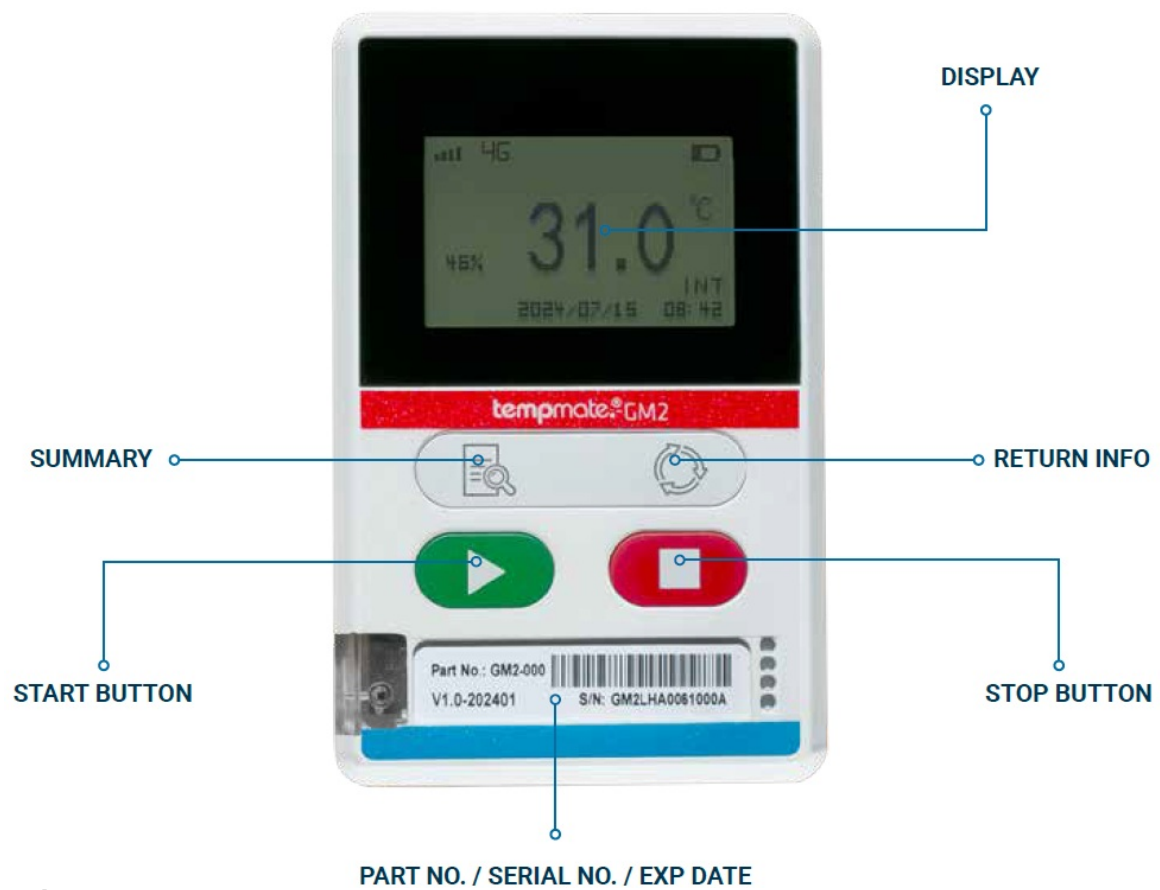
- Intended Use: Multi-use real-time solution for supply chain management
- Display: Network Signal, Connectivity, Current Temperature, Charging, Battery, Temperature Unit, Alarm Status, Time, Date, Number of Records, Rel. Humidity, Recording Sign
- Accessories:
 - Sensor Brackets: External sensor to expand temperature range or increase distance between measuring point and readout location
 - Wall Mount Bracket: For stationary monitoring, without external sensor

Product Usage Instructions

Intended Use

The tempmate.®-GM2 is designed to be attached to shipments and record relevant parameters as mentioned in the Data Sheet. Any use or operation which requires specific requirements and standards which aren't explicitly mentioned in the data sheet must be validated and tested on customer's own responsibility.

Device Description



Accessories



SENSOR BRACKETS with external sensor to expand temperature range and/or to increase the distance between the measuring point and the readout location.

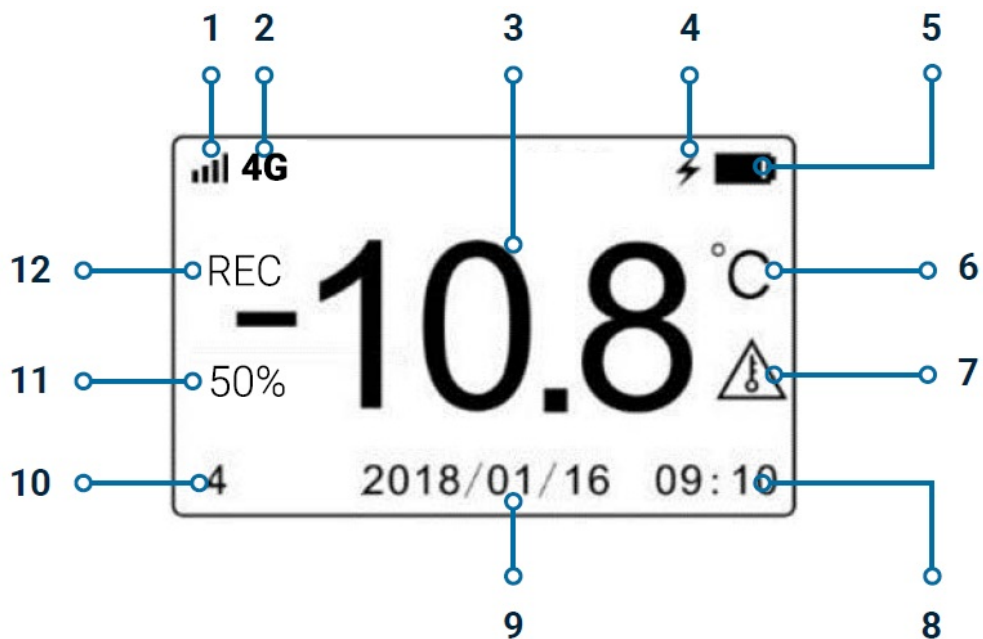
AVAILABLE SENSORS:

- TN0 Temp. Range: -40 to +80 °C
- TX0 Temp. Range: -200 to +100 °C



WALL MOUNT BRACKET without external sensor to mount the device for stationary monitoring.

Display Description



1. Network Signal
2. Connectivity
3. Current Temperature
4. Charging

5. Battery
6. Temperature Unit
7. Alarm Status
8. Time
9. Date
10. Number of Records
11. Rel. Humidity
12. Recording Sign

Start Guide tempmate.®-Cloud

The tempmate.®-GM2 comes with a bundled package of hardware, connectivity and cloud access. A user can easily start using the device and access the measured report in cloud by following these simple steps. In addition to a cloud account, a monitoring service (annual licence) is also required to use the device. This must be purchased in advance in order to register the devices and gain access to the advantages of the cloud.

STEP 1 Create a tempmate cloud account

To configure and access the device the user need a tempmate cloud account. The only prerequisite required to creating an account is a valid email ID. The user can create a tempmate cloud account by clicking on this link <https://web.tempmate.cloud/login> and following the instructions.

STEP 2 Add device to tempmate cloud account

The user can add new device in the tempmate cloud platform by clicking on “Add New Device” and custom configure the device by following the instructions in the cloud platform. To add the device to the account, the user should have access to the 14 character serial number of the device (mentioned on the frontside of the device, e.g.: GM2XXXXXXXXXX).

STEP 3 Start the device

The tempmate.®-GM2 device can be started by pressing the left green button continuously for more than 5 sec. The start of the device is confirmed by „Start“ appearing in the display. Additionally „REC“ appears permanently on the display screen. A start can additionally be programmed in the cloud.

STEP 4 Attach the device to the shipment

Once the device is started it can be placed in the shipment or your stationary application place. Additionally the device can be mounted with the additional wall mount bracket.

STEP 5 Track the shipment

The shipment can be tracked and monitored through the tempmate cloud platform. Additionally, reports can be viewed and exported from the cloud platform.

STEP 6 Stopping the device

The device can be stopped by pressing continuously the red stop button for more than 5 sec. When the unit is successfully stopped, „Stop“ appears in the display and the „RED“ indicator disappears. Optionally, the device can be configured for stop from the cloud platform remotely.

Operation and Usage

STEP 1 Activate device (Only for first use)

Press once the green “START” button and the screen will display „Press 5 Sec. to Activate“. As soon as the device is activated, all indicators in the display become active and the display shows „Press 5 Sec. to Start Record“, indicating that the logger is currently in not started stated.

STEP 2 Starting the device

Continuously press the green "START" button for at least 5 sec.

A successfully started device confirms this with a beeping sound. The „REC“ symbol appears on the display.

STEP 3 Recording information

In active mode, an alarm is shown at the bottom right of the display in the form of a warning triangle.

STEP 4 How to stop recording

Continuously press the red "STOP" button for at least 5 sec.

A successfully stopped device confirms this with a beeping sound. The „REC“ symbol disappears from the display.

STEP 5 View final information

After stopping, press the SUMMARY button several times to scroll through your final information. The summary will show for example the MAX and the MIN temperature of your last recording.

STEP 6 Charging

The battery of the tempmate GM2 can be charged.

If the battery is low before use, it can be directly connected to the micro USB interface for charging (Please use 5V charger). When charging, the charging icon ⚡ will be displayed.

CONTACT INFORMATION



Do you have any questions? Please contact us – our experienced team will be happy to support you.

sales@tempmate.com

+49 7131 6354 0

tempmate GmbH

Wannenäckerstr. 41

74078 Heilbronn, Germany

- Tel. +49-7131-6354-0
- sales@tempmate.com
- www.tempmate.com

FAQ

What does the shelf life mean?

The tempmate GM2 Lithium variant has a shelf life of 16 months and non-Lithium variant has a shelf life of 15 months from the date of production. It is mentioned as the Expiry date "EXP" on the back side of the device. That means that the user can start and use the device anytime before the mentioned Expiry date.

How can a device be stopped?

The device can be stopped by continuously pressing the red STOP button for more than 5 sec. Optionally, the device can be configured for stop from the cloud platform remotely

If I connect an external sensor, do I have to make any additional settings?

No, the external sensor is automatically recognized by the device.

What do I have to do if I want to use the tempmate.®-GM2 in stationary mode?

For permanent stationary use of the device, you have the option of using a charging cable to generate a permanent power supply. Please note that the external power supply and the resulting heat can lead to slight deviations in the temperature recording of the internal sensor.

Can I use the tempmate.®-GM2 without the tempmate.®-Cloud token?

No, a token must be purchased for each device in order to receive and analyze your data in the tempmate.®-Cloud.

Why do I have to do a double start on first use?

To conserve the battery until its first use, the device is put into deep sleep mode during production. When using the device for the first time, you must first bring it out of this deep sleep mode and into standby mode before the device can actually be started.

"Can

"Yes,

"How

"The

"Will

"Yes,

"How

"With

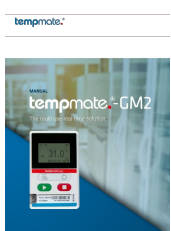
How do I know if my device is successfully added to the tempmate cloud account?

Your device is successfully added when you can see it listed in your tempmate cloud account dashboard after following the device addition process.

Can I change device settings remotely through the tempmate cloud platform?

Yes, you can configure certain settings and even stop the device remotely using the tempmate cloud platform.

Documents / Resources



[tempmate GM2 Rechargeable Data Logger](#) [pdf] User Manual
GM2, GM2 Rechargeable Data Logger, GM2, Rechargeable Data Logger, Data Logger, Logger

References

-  [cloud | tempmate.®](#)
-  [tempmate.® | Data Logger & Supply Chain Monitoring Solutions](#)
- [User Manual](#)

v class="57be77cde1a6ddba353152d58844f9cf" data-index="3" style="float: none; margin:10px 0 10px 0; text-align:center;">

[Elitech Temperature Data Logger User Guide](#)

RC-4/RC-4HA/RC-4HC Quick Start Guide. Install Battery Use a proper tool (such as a coin) to loosen the battery...

[Manuals+](#), [Privacy Policy](#)

This website is an independent publication and is neither affiliated with nor endorsed by any of the trademark owners. The "Bluetooth®" word mark and logos are registered trademarks owned by Bluetooth SIG, Inc. The "Wi-Fi®" word mark and logos are registered trademarks owned by the Wi-Fi Alliance. Any use of these marks on this website does not imply any affiliation with or endorsement.