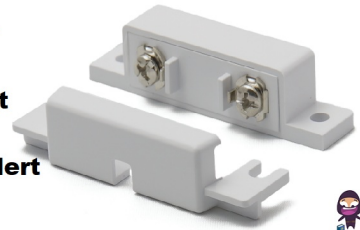


TEMP°ALERT®

**TA-40 Fixed Set
Point
Temperature Alert**



TEMP ALERT TA-40 Fixed Set Point Temperature Alert Instructions

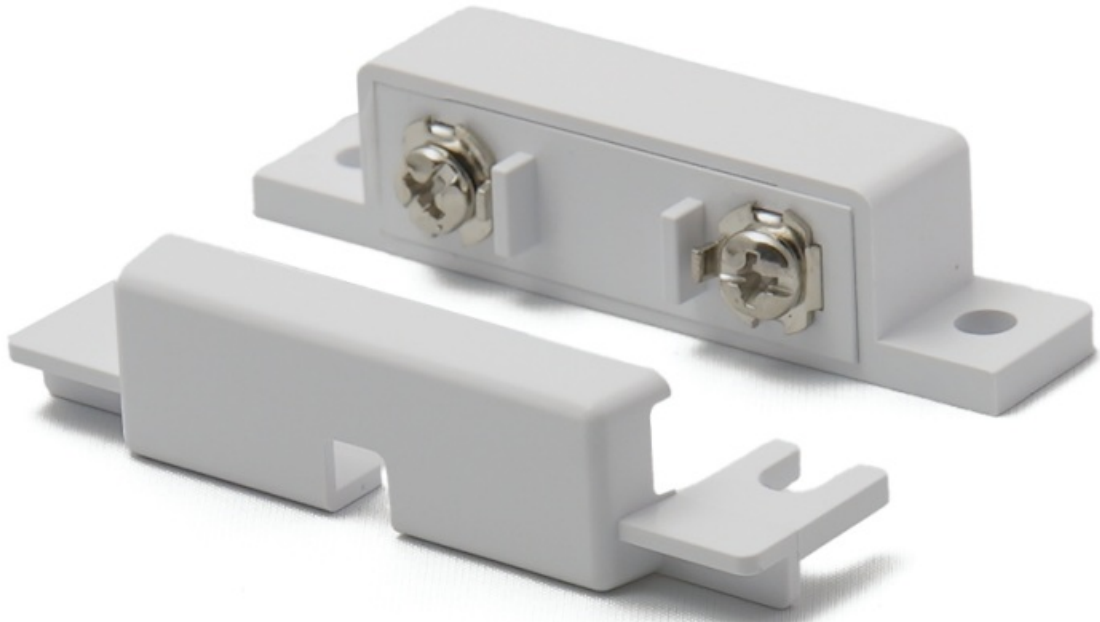
[Home](#) » [TEMP ALERT](#) » TEMP ALERT TA-40 Fixed Set Point Temperature Alert Instructions 

Contents

- [1 TEMP ALERT TA-40 Fixed Set Point Temperature Alert](#)
- [2 Product Usage Instructions](#)
- [3 FAQ](#)
- [4 Features](#)
- [5 Specifications](#)
- [6 Introduction](#)
- [7 Operation and Testing Procedures](#)
- [8 WARRANTY AND SERVICE INFORMATION](#)
- [9 Contact](#)
- [10 Documents / Resources](#)
 - [10.1 References](#)
- [11 Related Posts](#)

TEMP°ALERT®

TEMP ALERT TA-40 Fixed Set Point Temperature Alert



Product Usage Instructions

Mounting Instructions:

1. Use the base of the TA-40 as a template and mark the position of the screw holes.
2. Drill pilot holes if necessary.
3. Align the TA-40 with mounting holes and install the screws. Do not fully tighten screws at this time.
4. Connect the TA-40 to your warning device by attaching an 18-22 AWG twisted pair cable to the terminals.
5. Slide the cover on and finish tightening the mounting screws.

Testing Instructions:

To manually activate the TA-40 for testing purposes:

1. Place the device in a freezer for 10 minutes.
2. Remove the TA-40 from the freezer.
3. Test the contacts with an ohmmeter to confirm they have \opened.

Warranty and Service Information

Winland Electronics, Inc. offers a one-year limited warranty on their products. For warranty claims or service, please refer to the warranty terms provided in the manual.

FAQ

- **Q: What is the warranty period for Winland products?**
 - A: Winland offers a one-year limited warranty from the date of purchase.
- **Q: How do I test the TA-40 device?**
 - A: To test the TA-40, place it in a freezer for 10 minutes and then check the contacts with an ohmmeter.

This Package Contains:

- 1 TA-40
- 1 Mounting Kit (2 screws and 2 anchors)
- 1 Product Guide

Features

- Set point monitoring to warn of freezing temperatures
- Connects to most hardwire or wireless alarm systems
- Small size for unobtrusive appearance
- Normally Closed ("N.C.") device
- Do NOT put the TA-40 device into a cooler/freezer environment. Use EnviroAlert Professional® or EnviroAlert® with a hardwired sensor for cooler/freezer environment

Note:

- Do NOT place any Temp°Alert® in a cooler/freezer. Frost buildup and moisture can cause the device to malfunction.
- Test device weekly to ensure proper operation.

Specifications

- Power Requirements No power is required to operate
- Contact Rating 24V DC/AC =<200mA
- Fixed Setting N.C. >39.5 °F (>4.2 °C)
- Temperature Accuracy ±5.4 °F (±3.0 °C)
- Outputs N.C. dry contacts. NOT for high voltage use
- Weight 3oz (85.0g)
- Dimensions 2.5" x 0.8" x 0.55" (6.4cm x 2.0cm x 1.4cm)
- Mounting Two screw holes

Introduction

Thank you for your purchase of the Winland Temp°Alert® model TA-40. Your new Temp°Alert® has been designed for reliable monitoring of areas where low temperature limits are critical. Temp°Alert® monitors and activates when the temperature drops below 39.5 °F (4.2 °C).

Location:

It is difficult to precisely specify the location or quantity of TA-40's to install. A few factors such as room size, effectiveness of the ventilation system, and the likelihood of freezing should be considered. If the building already has an energy management system, an easy rule of thumb is to install a TA-40 near each thermostat. When protecting a building against freeze damage, always install at least one Temp°Alert® on every level of the home or business.

Installation/Items Needed:

- Standard or Philips Screwdriver
- Quantity of two (2) #6 screws
- 18-22 AWG twisted pair wire

Step 1:

Use the base of the TA-40 as a template and mark the position of the screw holes. Drill pilot holes if necessary. Align the TA-40 with mounting holes and install the screws. Do not fully tighten the screws at this time.

Step 2:

Connect the TA-40 to your warning device by attaching an 18-22 AWG twisted pair cable to the terminals. Slide the cover on and finish tightening the mounting screws.

Operation and Testing Procedures

The TA-40 must be in an area where the temperature range is between -40 to +212 °F (-40 to +100 °C). Contacts will remain closed at temperatures above 39.5 °F (4.2 °C). If the temperature drops below 39.5 °F (4.2 °C) the contacts will open to activate any hardwire alarm or wireless transmission. The tolerance on this temperature switch is ± 5.4 °F (± 3.0 °C). To manually activate the TA-40 for testing purposes, place the device in a freezer for 10 minutes. Remove the TA-40 from the freezer; test the contacts with an ohmmeter to confirm they have opened.

WARRANTY AND SERVICE INFORMATION


Winland Electronics, Inc. ("Winland") warrants to the original purchaser from Winland that each product of Winland's that it manufactures shall be free from defects in material and factory workmanship for a period of one (1) year from the date of purchase when properly installed and operated under normal conditions according to Winland's instruction. Winland's obligation under this limited warranty is limited to correcting the product without charge, at its factory any part or parts thereof which are returned, transportation charges prepaid, to the factory within one year of the date of purchase subject to Winland's examination showing to Winland's satisfaction to be covered by this warranty. Product returns will not be accepted unless a Return Material Authorization has been issued by Winland, which is subject to the purchaser's identification of the purchase order number and product serial number. UNAUTHORIZED RETURN SHIPMENT OR SHIPMENT CONTRARY TO WINLAND'S WRITTEN INSTRUCTIONS WILL VOID THIS LIMITED WARRANTY. Correction of such defects by repair, replacement, or refund of the amount paid for the product, at Winland's option, shall constitute fulfillment of all Winland's obligations under this limited warranty. Repaired and replacement parts will be warranted for the remainder of the original product warranty. Repairs not covered by this limited warranty may be offered by Winland for a charge. This limited warranty shall not apply to any of Winland's products that have been subject to misuse, negligence, or accident, or which have been repaired or altered outside of Winland's factory. THIS LIMITED WARRANTY IS IN LIEU OF ALL OTHER WARRANTIES, EXPRESS OR IMPLIED, INCLUDING, WITHOUT LIMITATION, ANY WARRANTIES OF MERCHANTABILITY, FITNESS FOR PARTICULAR PURPOSES, NON-INFRINGEMENT, DESIGN, AND TITLE, AND ANY WARRANTIES ARISING FROM COURSE OF DEALING, USAGE OF TRADE OR OTHERWISE. ALL OTHER REPRESENTATIONS MADE TO THE END USER/PURCHASER BY ANY OTHER PARTY ARE EXCLUDED. No person, agent or dealer is authorized to give warranties on behalf of Winland nor to assume for Winland any other liability in connection with any Winland product. WINLAND SHALL NOT BE LIABLE TO ANY PERSON FOR INDIRECT, SPECIAL, INCIDENTAL OR CONSEQUENTIAL DAMAGES OF ANY DESCRIPTION, WHETHER ARISING OUT OF WARRANTY OR OTHER CONTRACT, NEGLIGENCE, OTHER TORT, STRICT LIABILITY OR OTHERWISE. Under no circumstances shall Winland's liability under this limited warranty exceed the purchase price paid by the end user/purchaser for the product. The parties agree that the limitation of remedies in this document is an agreed-upon allocation of risk and does not cause the remedy to fail of its essential purpose.

Contact

- Tech Support 8:00am – 5:00pm Central Time
- [800-635-4269](tel:800-635-4269)
- [507-625-7231](tel:507-625-7231)
- techsupport@winland.com
- www.winland.com



Documents / Resources

 <small>WINLAND ELECTRONICS, INC. TEMP ALERT TA-40 Fixed Set Point Temperature Alert</small> <small>Model: TA-40 Description: A fixed set point temperature alert device that can be programmed to alert you when the temperature reaches a set point. It features a large LCD display and a speaker for audible alerts. The device is designed for use in a variety of environments, including homes, businesses, and industrial settings. It is easy to install and use, and it provides a reliable way to monitor and control your environment.</small> <small>Key Features: • Large LCD display • Audible alerts • Programmable set point • Easy installation and use • Reliable performance</small> <small>Specifications: • Dimensions: 4.5" x 3.5" x 1.5" • Weight: 0.5 lbs • Power: 12VDC • Battery: 3x AA (not included) • Operating Temperature: 32°F to 140°F • Humidity: 10% to 90% RH • Certifications: CE, FCC, RoHS</small>	<p>TEMP ALERT TA-40 Fixed Set Point Temperature Alert [pdf] Instructions</p> <p>TA-40 Fixed Set Point Temperature Alert, TA-40, Fixed Set Point Temperature Alert, Point Temperature Alert, Temperature Alert, Alert</p>
--	---

References

- [User Manual](#)

Manuals+, Privacy Policy

This website is an independent publication and is neither affiliated with nor endorsed by any of the trademark owners. The "Bluetooth®" word mark and logos are registered trademarks owned by Bluetooth SIG, Inc. The "Wi-Fi®" word mark and logos are registered trademarks owned by the Wi-Fi Alliance. Any use of these marks on this website does not imply any affiliation with or endorsement.