



TELTONIKA FMB230 2G Bluetooth Advanced GPS Tracker User Guide

[Home](#) » [TELTONIKA](#) » TELTONIKA FMB230 2G Bluetooth Advanced GPS Tracker User Guide 

Contents

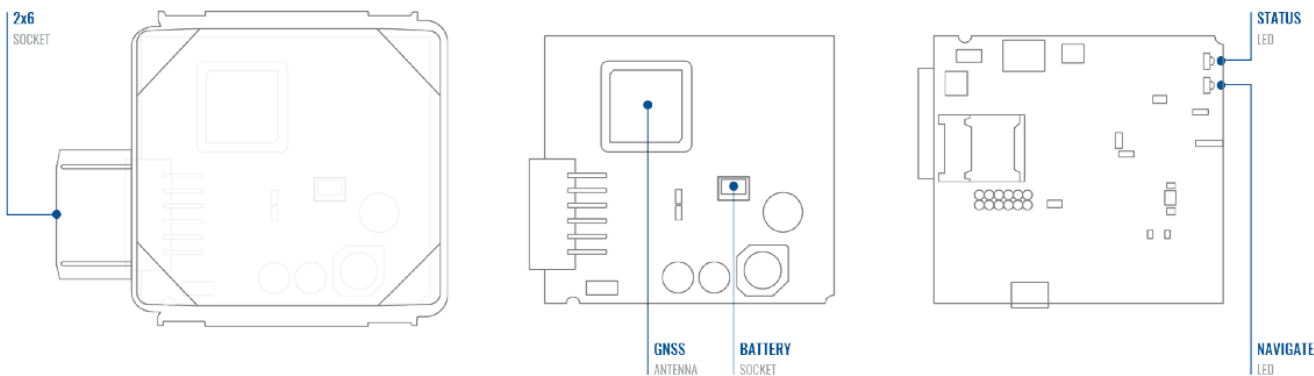
- 1 TELTONIKA FMB230 2G Bluetooth Advanced GPS Tracker
- 2 Know your device
- 3 Pinout
- 4 Wiring scheme
- 5 Set up your device
- 6 How to install USB drivers (Windows)
- 7 Configuration (Windows)
- 8 Quick SMS configuration
 - 8.1 GPRS settings:
- 9 Mounting recommendations with a standard cable
 - 9.1 Mounting recommendations with U-type cable
- 10 LED indications
- 11 Characteristics Basic characteristics
- 12 Electrical characteristics
- 13 Safety information
- 14 Certification and Approvals
- 15 Warranty
- 16 Documents / Resources
 - 16.1 References
- 17 Related Posts



TELTONIKA FMB230 2G Bluetooth Advanced GPS Tracker



Know your device



Pinout

Table 1 FMB230 2×6 socket pinout

PIN NUMBER	PIN NAME	DESCRIPTION
1	VCC (10-30) V DC (+)	Power supply (+10-30 V DC).
2	DOUT 3	Digital output, channel 3. Open collector output. Max. 0, 5 A DC..
3	DIN 3 / AIN 2	Analog input, channel 2. Input range: 0- 30 V DC / Digital input, channel 3.
4	DIN 2-N / AIN 1	Digital input, channel 2, Negative input, Analog input, channel 1, Input range: 0- 30 V DC.
5	DIN 1	Digital input, channel 1.
6	INPUT 6	TX EXT (LVCAN – TX).
7	GND (-)	Ground pin. (10-30) V DC (—)
8	DOUT 1	Digital output, channel 1. Open collector output. Max. 0, 5 A DC..
9	DOUT 2	Digital output, channel 2. Open collector output. Max. 0, 5 A DC.
10	1WIRE POWER	+3,8 V output for 1–Wire devices.
11	1WIRE DATA	Data for 1–Wire devices.
12	INPUT 5	RX EXT (LVCAN – RX).



Figure 2 FMB230 2x6 socket pinout

Wiring scheme

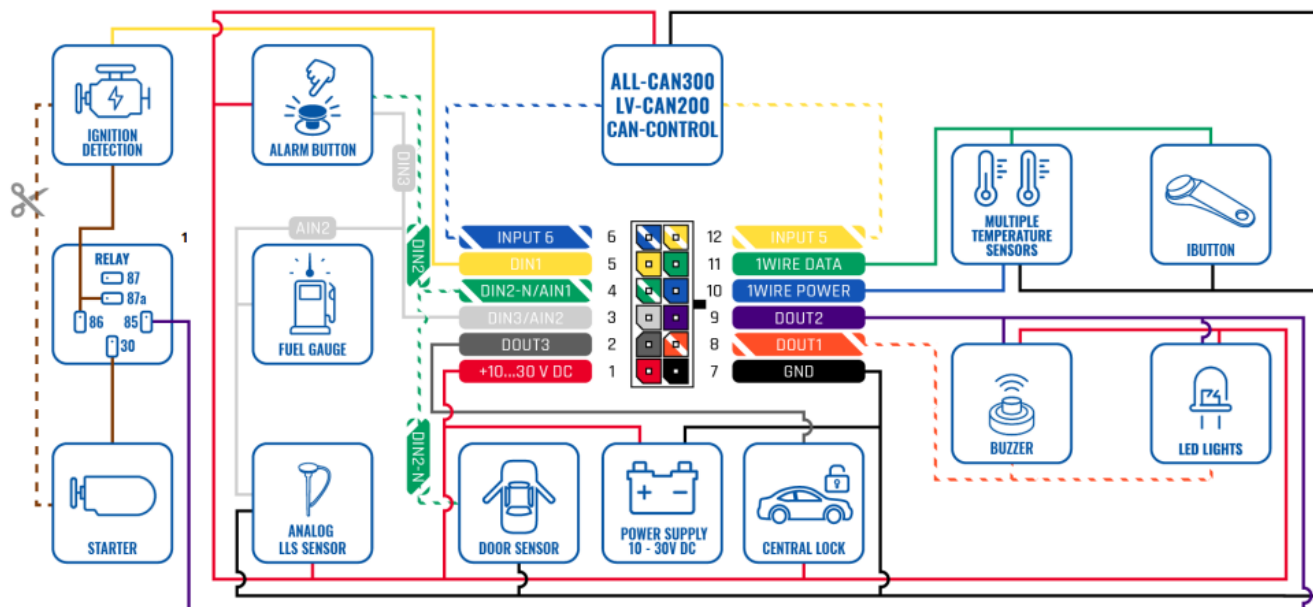
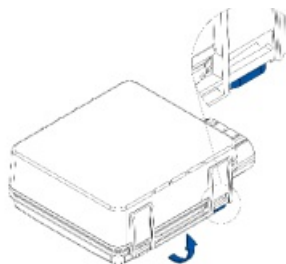


Figure 3 FMB230 Wiring scheme

Set up your device

How to insert Micro-SIM card and connect the battery



1

Figure 4 Partly closed device



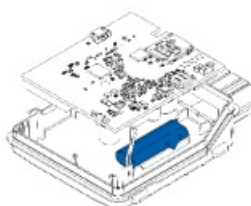
2

Figure 5 Cover removal



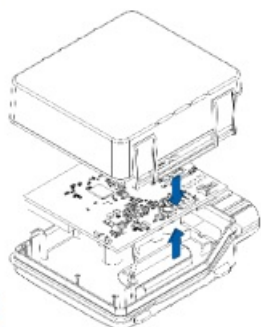
3

Figure 6 SIM card insert



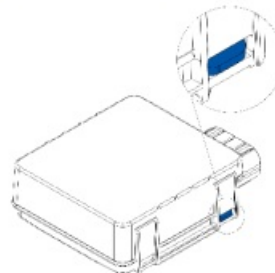
4

Figure 7 Battery connection



5

Figure 8 Attaching cover back



6

Figure 9 Completely closed device

1. You will receive your device partly closed.
2. Gently remove top and bottom covers.
3. Insert SIM card as shown with PIN request disabled or read our Wiki how to enter it later in Teltonika Configurator. Make sure that Micro-SIM card cut-off corner is pointing outward from slot.
4. Connect battery as shown to device. Position the battery in place where it does not obstruct other components.
5. After configuration, see “PC Connection (Windows)”, attach device top and bottom cover back and press them twice to the full closure.
6. Make sure that product casing is closed correctly.

IMPORTANT! This device has an IP67 casing with a two-phase closing, that ensures reliable protection and ease of use. Please make sure that product casing corner clips are fixed tightly and cable is connected to the device in order to maintain the degree of IP67 protection.

PC Connection (Windows)

1. Power-up FMB230 with DC voltage (10 – 30 V) power supply using supplied power cable. LED's should start blinking, see “LED indications”.
2. Connect device to computer using Micro-USB cable or Bluetooth connection:
 - **Using Micro-USB cable**
You will need to install USB drivers, see “How to install USB drivers (Windows)”
 - **Using Bluetooth**
FMB230 Bluetooth is enabled by default. Turn on Bluetooth on your PC, then select Add Bluetooth or other device > Bluetooth. Choose your device named – “FMBxxx_last_7_imei_digits”, without LE in the end. Enter default password 5555, press Connect and then select Done.
3. You are now ready to use the device on your computer.

How to install USB drivers (Windows)

1. Please download COM port drivers from here.
2. Extract and run TeltonikaCOMDriver.exe.
3. Click Next in driver installation window.
4. In the following window click Install button.

Setup will continue installing the driver and eventually the confirmation window will appear. Click Finish to complete the setup.

Configuration (Windows)

At first FMB230 device will have default factory settings set. These settings should be changed according to the user's needs. Main configuration can be performed via Teltonika Configurator software. Get the latest Configurator version from here. Configurator operates on Microsoft Windows OS and uses prerequisite MS .NET Framework 5.0. Make sure you have the correct version installed.

Table 2 MS .NET requirements

MS .NET REQUIREMENTS

Operating system	MS .NET Framework version	Version	Links
Windows Vista Windows 7	MS .NET Framework 4.6.2	32 and 64 bit	www.microsoft.com
Windows 8.1			
Windows 10			

Downloaded Configurator will be in compressed archive. Extract it and launch Configurator.exe. After launch software language can be changed by clicking i n the right bottom corner (Figure 10 Language selection).

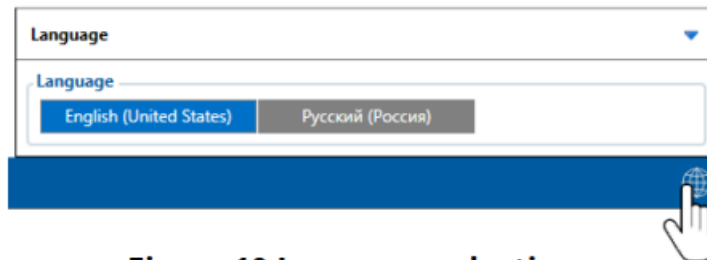


Figure 10 Language selection

Configuration process begins by pressing on connected device (Figure 11 Device connected via USB).



Figure 11 Device connected via USB

After connection to Configurator Status window will be displayed (Figure 12 Configurator Status window).

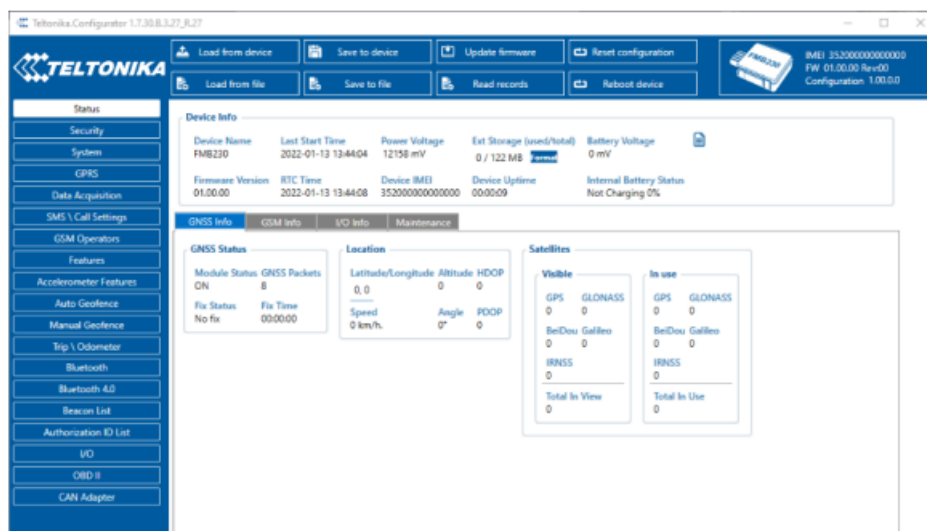


Figure 12 Configurator Status window

Various Status window tabs display information about GNSS, GSM, I/O, Maintenance and etc. FMB230 has one user editable profile, which can be loaded and saved to the device. After any modification of configuration the changes need to be saved to device using Save to device button. Main buttons offer following functionality:

1. Load from device – loads configuration from device.
2. Save to device – saves the configuration to device.

3. Load from file – loads configuration from file.
4. Save to file – saves the configuration to file.
5. Update firmware – updates the firmware on the device.
6. Read records – reads records from the device.
7. Reboot device – restarts the device.
8. Reset configuration – sets device configuration to default.

Most important configurator section is GPRS – where all your server and GPRS settings can be configured and Data Acquisition – where data acquiring parameters can be configured.
More details about FMB230 configuration using Configurator can be found in our Wiki.

Quick SMS configuration

Default configuration has optimal parameters present to ensure best performance of track quality and data usage. Quickly set up your device by sending this SMS command to it: " setparam 2001:APN;2002:APN_username;2003:APN_password;2004:Domain;2005:Port;2006:0"

Note: Before SMS text, two space symbols should be inserted.

GPRS settings:



- 2001 – APN
- 2002 – APN username (if there are no APN username, empty field should be left)
- 2003 – APN password (if there are no APN password, empty field should be left)

Server settings:

- 2004 – Domain
- 2005 – Port
- 2006 – Data sending protocol (0 – TCP, 1 – UDP)

Default configuration settings

Movement and ignition detection:

- Vehicle movement will be detected by accelerometer

The device makes a record On Moving if one of these events happen:

- 300 seconds pass
- The vehicle drives 100 meters

The device makes a record On Stop if:

- 1 hour passes while vehicle is stationary and ignition is off

Records sending to server:

- If the device has made a record it is sent to the server every 120 seconds
- Ignition will be detected by vehicle power voltage between 13,2 – 30 V
- The vehicle turns 10 degrees
- Speed difference between the last coordinate and current position is greater than 10 km/h

After successful SMS configuration, FMB230 device will synchronize time and update records to configured server. Time intervals and default I/O elements can be changed by using Teltonika Configurator or SMS parameters.

Mounting recommendations with a standard cable

• Connecting wires

- Wires should be connected while the module is not plugged in.
- Wires should be fastened to stable wires or other non-moving parts. Any heat emitting and/or moving objects should be kept away from the wires.
- There should be no exposed wires. If factory isolation was removed while connecting the wires, the isolation material should be applied.
- If the wires are placed in the exterior or in places where they can be damaged or exposed to heat, humidity, dirt, etc., additional isolation should be applied and the wires should not be loose.
- Wires cannot be connected to the board computers or control units.

• Connecting power source

- Be sure that after the car computer goes to sleep mode, power might be still available on the power wires. Depending on the car model, this may happen in 5 to 30 minutes period.
- When the module is connected, measure the voltage again to make sure it did not decrease.
- It is recommended to connect to the main power cable in the fuse box.
- 3 A, 125 V external fuse shall be used.

• Connecting ignition wire

- Be sure to check if it is a real ignition wire i. e. power does not disappear after starting the engine.
- Check if this is not an ACC wire (when key is in the first position, most of the vehicle electronics are available).
- Check if power is still available when you turn off any of vehicles devices.
- Ignition is connected to the ignition relay output. As alternative, any other relay, which has power output when ignition is on, may be chosen.

• Connecting ground wire

- Ground wire is connected to the vehicle frame or metal parts that are fixed to the frame.

- If the wire is fixed with the bolt, the loop must be connected to the end of the wire.
- For better contact scrub paint from the spot where loop is going to be connected.

Mounting recommendations with U-type cable

- **Device fastening**

- Locate the battery in your vehicle. If present removes the battery cover to access the battery.
- You can use double-sided tape to attach the device on the battery as well as fastening straps to mount it anywhere next to the battery. Please make sure, that the GNSS antenna and LEDs indicators are facing up Figure 13.

- **Connecting power wire**

- Device power wire is designed to be directly connected to the positive terminal fastener of the vehicle battery

- **Connecting ground wire**

- Device ground wire is designed to be directly connected to the negative terminal fastener of the vehicle battery.

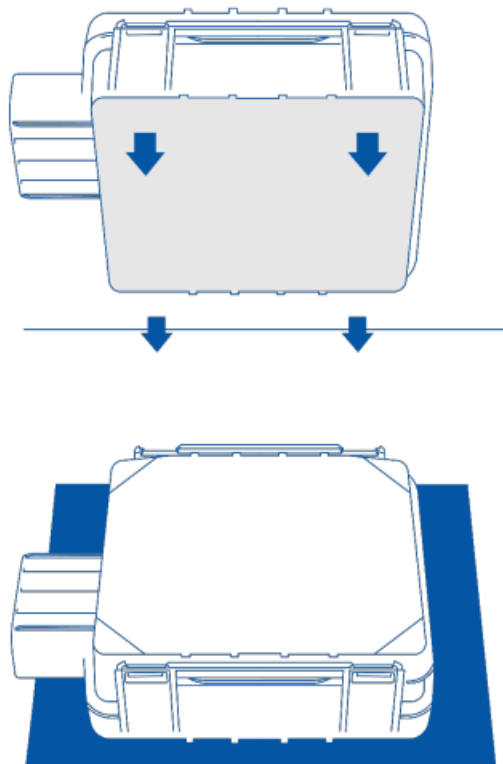


Figure 13 Device mounting

LED indications

Table 3 Navigation LED indications

BEHAVIOUR	MEANING
Permanently switched on	GNSS signal is not received
Blinking every second	Normal mode, GNSS is working
Off	GNSS is turned off because: Device is not working or Device is in sleep mode
Blinking fast constantly	Device firmware is being flashed

Table 4 Status LED indications

BEHAVIOUR	MEANING
Blinking every second	Normal mode
Blinking every two seconds	Sleep mode
Blinking fast for a short time	Modem activity
Off	Device is not working or Device is in boot mode

Characteristics Basic characteristics

Table 5 Basic characteristics

MODULE	
Name	Teltonika TM2500
Technology	GSM/GPRS/GNSS/BLUETOOTH
GNSS	
GNSS	GPS, GLONASS, GALILEO, BEIDOU, QZSS, AGPS
Receiver	Tracking: 33
Tracking sensitivity	-165 dBm
Position Accuracy	< 2.5 CEP
Velocity Accuracy	< 0.1 m/s (within +/- 15% error)
Hot start	< 1 s
Warm start	< 25 s
Cold start	< 35 s
CELLULAR	
Technology	GSM
2G bands	Quad-band 850 / 900 / 1800 / 1900 MHz
Data transfer	GPRS Multi-Slot Class 12 (up to 240 kbps), GPRS Mobile Station Class B
Data support	SMS (text/data)

POWER	
Input voltage range	10-30 V DC with overvoltage protection
Back-up battery	170 mAh Li-Ion battery 3.7 V (0.63 Wh)
Internal fuse	3A, 125 V
Power consumption	At 12V < 2.5 mA (Ultra Deep Sleep)
	At 12V < 5 mA (Deep Sleep)
	At 12V < 5.5 mA (Online Deep Sleep)
	At 12V < 18,5 mA (GPS Sleep)
	At 12V < 34 mA (nominal with no load)
	At 12V < 2.0 A Max. (with full Load/Peak)
BLUETOOTH	
Specification	4.0 + LE
Supported peripherals	Temperature and Humidity sensor , Headset , OBDII dongle , Inateck Barcode Scanner, Universal BLE sensors support
INTERFACE	
Digital Inputs	3
Negative Inputs 1	1 (Digital Input 2)
Impulse Inputs	2 (Digital Input 1, Digital Input 2)
Digital Outputs	3
Analog Inputs	2
CAN Adapter inputs	1
1-Wire	1
GNSS antenna	Internal High Gain
GSM antenna	Internal High Gain
USB	2.0 Micro-USB
LED indication	2 status LED lights
SIM	Micro-SIM + eSIM
Memory	128MB internal flash memory
PHYSICAL SPECIFICATION	

Dimensions	70,5 x 67,0 x 25,6 mm (L x W x H)	
	85,0 x 67,0 x 25,6 mm (L x W x H) (length with connector socket)	
OPERATING ENVIRONMENT		
Operating temperature (without battery)	-40 °C to +85 °C	
Storage temperature (without battery)	-40 °C to +85 °C	
Operating temperature (with battery)	-20 °C to +40 °C	
Storage temperature (with battery)	-20 °C to +45 °C	
Operating humidity	5% to 95% non-condensing	
Ingress Protection Rating	IP67	
Battery charge temperature	0 °C to +45 °C	
Battery discharge temperature	-20 °C to +60 °C	
Battery storage temperature	-20 °C to +45 °C for 1 month	
	-20 °C to +35 °C for 6 months	
FEATURES		
Sensors	Accelerometer	
Scenarios	Green Driving , Over Speeding detection , Jamming detection , GNSS Fuel Counter , DOUT Control Via Call , Excessive Idling detection , Immobilizer , iButton Read Notification , Unplug detection , Towing detection , Crash detection , Auto Geofence , Manual Geofence , Trip	
Sleep modes	GPS Sleep , Online Deep Sleep , Deep Sleep , Ultra Deep Sleep	
Configuration and firmware update	FOTA Web , FOTA , Teltonika Configurator (USB, Bluetooth), FMBT mobile application (Configuration)	
SMS	Configuration, Events, DOUT control, Debug	
GPRS commands	Configuration, DOUT control, Debug	
Time Synchronization	GPS, NITZ, NTP	
Fuel monitoring	LLS (Analog), LV-CAN200 , ALL-CAN300 , OBDII dongle , CAN-CONTROL , OBDII dongle	

Ignition detection	Digital Input 1, Accelerometer, External Power Voltage, Engine RPM (CAN Adapters, OBDII dongle)
--------------------	---

Electrical characteristics

Table 6 Electrical characteristics

CHARACTERISTIC DESCRIPTION	VALUE			
	MIN.	TYP.	MAX.	UNIT
SUPPLY VOLTAGE				
Supply Voltage (Recommended Operating Conditions)	+10		+30	V
DIGITAL OUTPUT (OPEN DRAIN GRADE)				
Drain current (Digital Output OFF)			120	μA
Drain current (Digital Output ON, Recommended Operating Conditions)		0.1	0.5	A
Static Drain-Source resistance (Digital Output ON)		400	600	mΩ
DIGITAL INPUT				
Input resistance (DIN1)	47			kΩ
Input resistance (DIN2)	38.45			kΩ
Input resistance (DIN3)	150			kΩ
Input voltage (Recommended Operating Conditions)	0		Supply voltage	V
Input Voltage threshold (DIN1)		7.5		V
Input Voltage threshold (DIN2)		2.5		V

Input Voltage threshold (DIN3)		2.5		V
ANALOG INPUT				
Input voltage (Recommended Operating Conditions), Range 1	0		+10	V
Input resistance, Range 1		38.45		kΩ
Measurement error on 12V, Range 1		0.9		%
Additional error on 12 V, Range 1		108		mV
Measurement error on 30 V, Range 1		0.33		%
Additional error on 30 V, Range 1		88		mV
Input Voltage (Recommended Operating Conditions), Range 2	0		+30	V
Input resistance, Range 2		150		kΩ
Measurement error on 12 V, Range 2		0.9		%
Additional error on 12 V, Range 2		108		mV
Measurement error on 30 V, Range 2		0.33		%
Additional error on 30 V, Range 2		88		mV
OUTPUT SUPPLY VOLTAGE 1-WIRE				
Supply voltage	+4.5		+4.7	V
Output inner resistance		7		Ω
Output current (Uout > 3.0 V)		30		mA
Short circuit current (Uout = 0)		75		mA
NEGATIVE INPUT				
Input resistance	38.45			kΩ
Input voltage (Recommended Operating Conditions)	0		Supply voltage	V
Input voltage threshold		0.5		V
Sink current			180	nA

Safety information

This message contains information on how to operate FMB230 safely. By following these requirements and recommendations, you will avoid dangerous situations. You must read these instructions carefully and follow them strictly before operating the device!

- The device uses SELV limited power source. The nominal voltage is + 12 V DC. The allowed voltage range is +10..+30 V DC.
- To avoid mechanical damage, it is advised to transport the device in an impact-proof package. Before usage, the device should be placed so that its LED indicators are visible. They show the status of device operation.

- When connecting the 2×6 connector wires to the vehicle, the appropriate jumpers of the vehicle power supply should be disconnected.
- Before unmounting the device from the vehicle, the 2×6 connector must be disconnected. The device is designed to be mounted in a zone of limited access, which is inaccessible to the operator. All related devices must meet the requirements of EN 62368-1 standard. The device FMB230 is not designed as a navigational device for boats.
 - Do not disassemble the device. If the device is damaged, the power supply cables are not isolated or the isolation is damaged, DO NOT touch the device before unplugging the power supply
 - All wireless data transferring devices produce interference that may affect other devices which are placed nearby.
 - The device must be connected only by qualified personnel.
 - The device must be firmly fastened in a predefined location.
 - The programming must be performed using a PC with autonomic power supply.
 - Installation and/or handling during a lightning storm is prohibited.
 - The device is susceptible to water and humidity.
 - CAUTION: Risk of explosion if battery is replaced by an incorrect type. Dispose of used batteries according to the instructions.
 - Battery should not be disposed of with general household waste. Bring damaged or worn-out batteries to your local recycling center or dispose them to a battery recycle bin found in stores.

Certification and Approvals

This sign on the package means that it is necessary to read the User's Manual before your start using the device. Full User's Manual version can be found in our Wiki.

This sign on the package means that all used electronic and electric equipment should not be mixed with general household waste.

Warranty

TELTONIKA guarantees its products to be free of any manufacturing defects for a period of 24 months. With the additional agreement we can agree on a different warranty period, for more detailed information please contact our sales manager. Contact us teltonika.it/company/contacts All batteries carry a reduced 6-month warranty period.

If a product should fail within this specific warranty time, the product can be:

- Repaired
- Replaced with a new product
- Replaced with an equivalent repaired product fulfilling the same functionality
- TELTONIKA can also repair products that are out of warranty at an agreed cost.

Warranty Disclaimer

TELTONIKA PRODUCTS ARE INTENDED TO BE USED BY PERSONS WITH TRAINING AND EXPERIENCE. ANY OTHER USE RENDERES THE LIMITED WARRANTIES EXPRESSED HEREIN AND ALL IMPLIED WARRANTIES NULL AND VOID AND SAME ARE HEREBY EXCLUDED. ALSO EXCLUDED FROM THIS LIMITED WARRANTY ARE ANY AND ALL INCIDENTAL OR CONSEQUENTIAL DAMAGES INCLUDING BUT NOT LIMITED TO, LOSS OF USE OR REVENUE, LOSS OF TIME, INCONVENIENCE OR ANY OTHER ECONOMIC LOSS.

More information can be found at teltonika.it/warranty-repair

Documents / Resources



[TELTONIKA FMB230 2G Bluetooth Advanced GPS Tracker](#) [pdf] User Guide
FMB230, GPS Tracker, Tracker, Advanced GPS Tracker, Bluetooth Tracker

References

-  [Teltonika - IoT, Internet of Things](#)
-  [Microsoft – Cloud, Computers, Apps & Gaming](#)

[Manuals+](#)