



TELTONIKA GH5200 Autonomous Tracker with GNSS Instruction Manual

[Home](#) » [teltonika](#) » TELTONIKA GH5200 Autonomous Tracker with GNSS Instruction Manual 

Contents

- 1 TELTONIKA GH5200 Autonomous Tracker with GNSS
- 2 Know your device
- 3 Set up your device
- 4 PC Connection (Windows)
- 5 Quick SMS configuration
- 6 Default configuration settings
- 7 Safety information
- 8 Precautions
- 9 Documents / Resources
 - 9.1 References
- 10 Related Posts



TELTONIKA GH5200 Autonomous Tracker with GNSS



GH5200 is an autonomous personal tracker for lone worker protection.

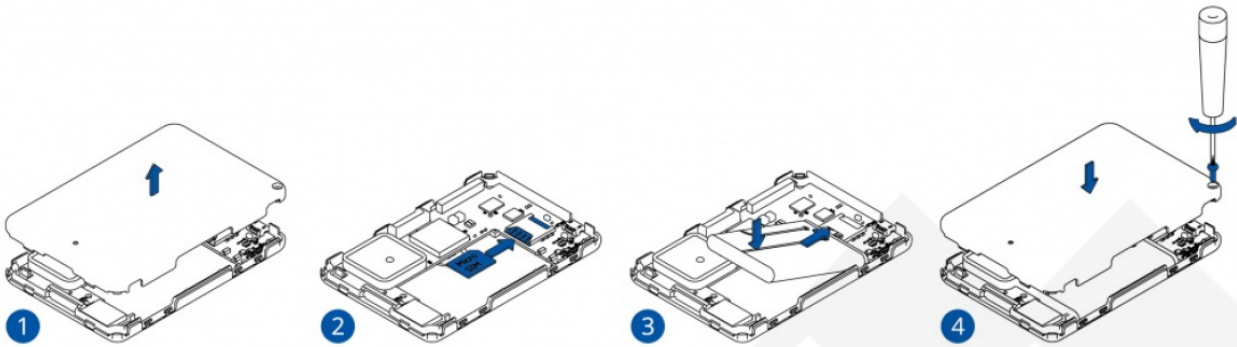
Know your device



Set up your device

How to insert the Micro SIM card and connect the battery

1. Remove the cover.
2. Insert Micro-SIM card as shown with PIN request disabled. Make sure that the Micro-SIM card cut-o corner is pointing forward to slot.
3. Insert the battery as shown to a device. Position the battery in a place where it does not obstruct other components.
4. Reattach the cover and tighten the screw.



5. Micro-SIM card insertion/removal must be performed when the device is powered and the battery is disconnected. Otherwise, the Micro-SIM card might be damaged or the device will not detect it.

PC Connection (Windows)

1. Turn on your device by holding the power button for around 7 seconds.
2. Connect the device to a computer using a Micro-USB cable or Bluetooth connection:
 - Using Micro-USB cable
 - You will need to install USB drivers, see “How to install USB drivers (Windows)” shown below.
 - Using Bluetooth
 - GH5200 Bluetooth is enabled by default. Turn on Bluetooth on your PC, then select Add Bluetooth or another device> Bluetooth. Choose your device named –
 - “GH5200_last_7_imei_digits”, without LE in the end. Enter default password 5555, press Connect and then select Done.
3. You are now ready to use the device on your computer.

How to install USB drivers (Windows)

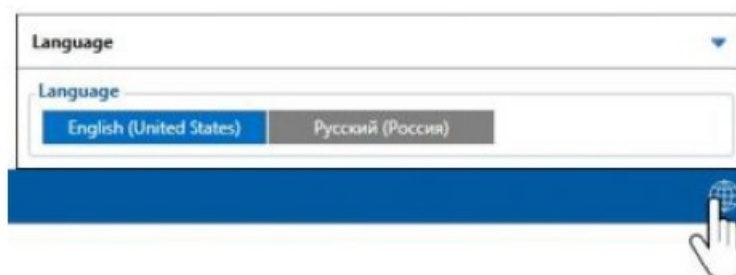
1. Please download COM port drivers from here. here (<https://teltonika-gps.com/downloads/en/fmb120/TeltonikaCOMDriver.zip>).2. Extract and run TeltonikaCOMDriver.exe.
2. Click Next in the driver installation window.
3. . In the following window click the Install button. Setup will continue installing the driver and eventually, the confirmation window will appear. Click Finish to complete the setup.

Configuration (Windows)

At GH5200 device will have default factory settings set. These settings should be changed according to the user's needs. The main configuration can be performed via Teltonika Configurator software. Configurator operates on Microsoft Windows OS and uses prerequisite MS .NET Framework. Make sure you have the correct version installed.

Operating system	MS .NET Framework version	Version	Link
Windows Vista Windows 7 Windows 8.1 Windows 10	MS .NET Framework 4.6.2	32 and 64 bit	www.microsoft.com (https://dotnet.microsoft.com/en-us/download/dotnet-framework)

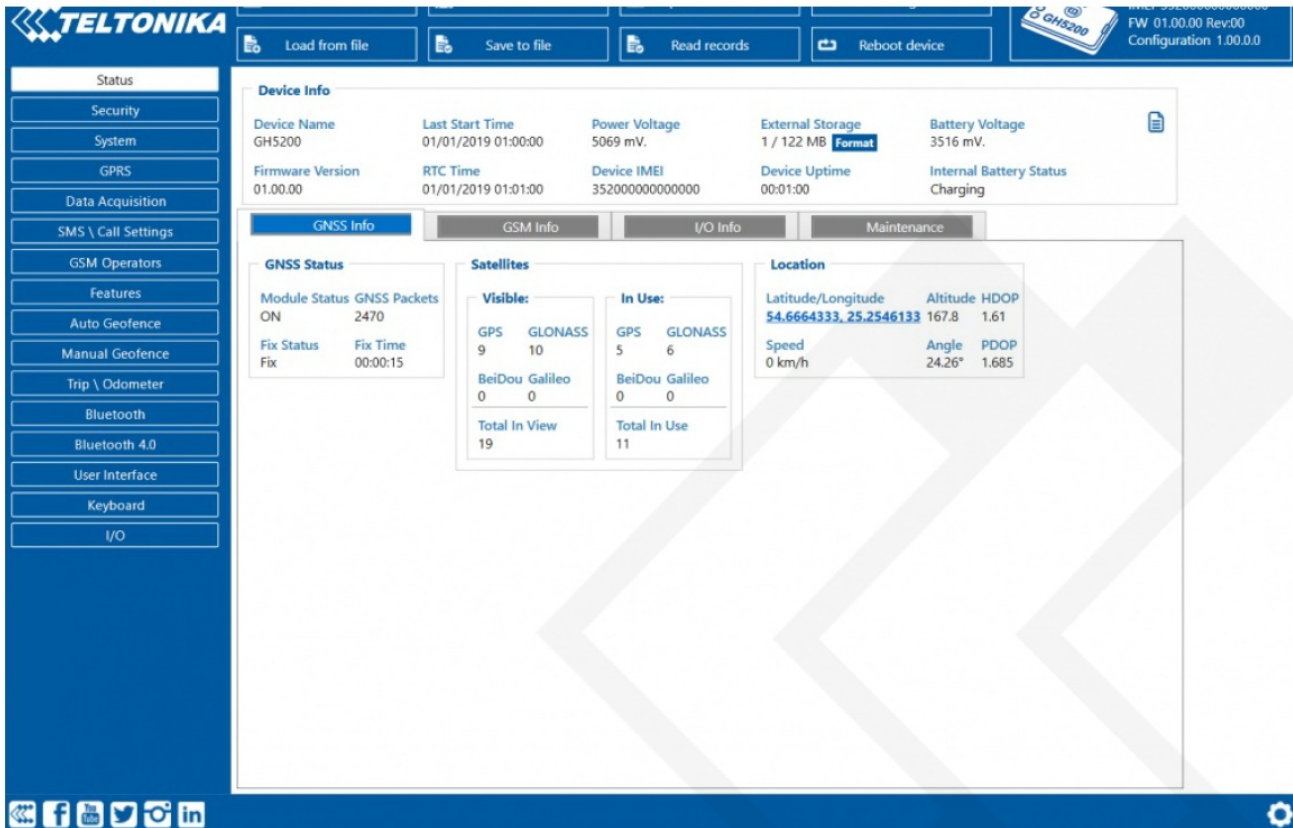
The downloaded Configurator will be in a compressed archive. Extract it and launch Congurator.exe. After launch software language can be changed by clicking in the right bottom corner:



The configuration process begins by pressing on the connected device:



After connection to Concurator Status window will be displayed:



Various Status info tabs display information about GNSS, GSM, I/O, Maintenance and etc. GH5200 has one user editable profile, which can be loaded and saved to the device. After any modification of the configuration, the changes need to be saved to the device using Save to Device button. Main buttons following functionality:

1. Load from the device – loads configuration from the device.
2. Save to device – saves the configuration to the device.
3. Load from le – loads configuration from le.
4. Save to le – saves the configuration to le.
5. Update firmware – updates firmware on the device.
6. Read records – read records from the device.
7. Reboot device – restarts device.
8. Reset configuration – sets device configuration to default.

The most important configurator section is GPRS – where all your server and GPRS settings can be configured and Data acquisition – where data acquiring parameters can be configured. More details about GH5200 configuration using Configurator can be found [here](#).

Quick SMS configuration

The default configuration has optimal parameters present to ensure the best performance of track quality and data usage. Quickly set up your device by sending this SMS command to it

Default configuration settings



Movement detection:

1. Device movement will be detected by accelerometer
2. Device makes a record On Moving if one of these events happen
3. Angle difference between last coordinate
4. 300 seconds passes and current position is greater than 10°
5. Traveled distance is more than 100 meters
6. Speed difference between last coordinate and current position is greater than 10 km/h
7. 1 hour passes while device is stationary
8. Records sending to server:
9. If device has made a record it is sent to the server every 120 seconds

Safety information


This message contains information on how to operate GH5200 safely. By following these requirements and recommendations, you will avoid dangerous situations. You must read these instructions carefully and follow them strictly before operating the device!

Precautions

- Operate the device in suitable conditions
- Do not use the device where mobile connectivity is forbidden.
- Road safety Comply with local laws, always hold your hands on a steering wheel when using a device. Your safety is of utmost importance when you drive.
- Interference All wireless devices are sensitive to electromagnetic interference, as a result wireless devices affect the performance of each other.
- Limit the use of device in hospitals Please follow all restrictions. Turn the device in the vicinity of medical devices when required.

- Limit the use of device in vehicles Please follow all restrictions. Wireless devices can interfere with other electronic equipment in vehicles.
- Be cautious near ammable materials and liquids Charging precautions SELV LPS chargers, personal computers or laptops that device will be connected to must comply with the requirements of IEC 60950:2005 standard.
- Use only original batteries Using uncertied manufacturer or dierent type batteries may cause an explosion.
- Protect batteries from moisture. Place them in a cool and dry place when storing. Avoid extensive operation at high temperatures. Do not attempt charging battery directly from the electrical mains. All utilised batteries shall comply with IEC 62133.
- Power supplies Power supply circuits used to charge the device connection must have safeguards, which prevent power leakage, short circuits or incorrect electrical grounding. Any used switches ought to be installed in a readily accessible location. Power must be uninterrupted and the distance between the contacts must be 3 mm or larger.
- Remove device safely Device must be disconnected from computer or charger by unplugging the magnetic USB cable from the device.
- In order to prevent device from mechanical damage it is advisable to transport it in a shock-resistant packaging. If device stopped working properly regardless of the settings only a qualied specialist can help. It is recommended to contact your local seller or your UAB Teltonika manager in such a case.
- Use the right screwdriver In order to prevent device's cover from mechanical damage it is recommended to use screwdriver, which is included in the package. Do not use electrical screwdrivers.
- <https://wiki.teltonika-mobility.com/view/GH5200> Retrieved from “https://wiki.teltonika-mobility.com/wikibase/index.php?title=GH5200_First_Start&oldid=62091”

Documents / Resources

	<p>TELTONIKA GH5200 Autonomous Tracker with GNSS [pdf] Instruction Manual GH5200, Autonomous Tracker with GNSS, GH5200 Autonomous Tracker with GNSS</p>
---	--

References

- soft.com/en-us/download
- [Microsoft – Cloud, Computers, Apps & Gaming](#)
- [Teltonika - IoT, Internet of Things](#)
- [Download .NET Framework | Free official downloads](#)
- [Teltonika - IoT, Internet of Things](#)
- [File:Configurator connect-GH5200.jpg - Wiki Knowledge Base | Teltonika Mobility](#)
- [File:FMB Configurator language.jpg - Wiki Knowledge Base | Teltonika Mobility](#)
- [File:GH5200 battery sim insert-1.jpg - Wiki Knowledge Base | Teltonika Mobility](#)
- [File:GH5200 battery sim insert-2.jpg - Wiki Knowledge Base | Teltonika Mobility](#)
- [File:GH5200 battery sim insert-3.jpg - Wiki Knowledge Base | Teltonika Mobility](#)
- [File:GH5200 battery sim insert-4.jpg - Wiki Knowledge Base | Teltonika Mobility](#)
- [File:GH5200 demo 00.png - Wiki Knowledge Base | Teltonika Mobility](#)

- [!\[\]\(fd4127b9e2af37bd6ea0fa06afa8e6d8_img.jpg\) File:GH5200 know your device.png - Wiki Knowledge Base | Teltonika Mobility](#)
- [!\[\]\(3278d6283d12f18012b5aa7d40747611_img.jpg\) File:GH5200 status screen.jpg - Wiki Knowledge Base | Teltonika Mobility](#)
- [!\[\]\(bb96b32142ec45f72f12316beae3ef61_img.jpg\) File:IOS sms cfg.png - Wiki Knowledge Base | Teltonika Mobility](#)
- [!\[\]\(a75d0d7d1ac0ea815a0c027a77b137d5_img.jpg\) File:Min distance.png - Wiki Knowledge Base | Teltonika Mobility](#)
- [!\[\]\(adab168ecea4e2ae40993afba3fcd26e_img.jpg\) File:Qsg rut950 teltonika.PNG - Wiki Knowledge Base | Teltonika Mobility](#)
- [!\[\]\(e95ea1a0e297340f96c3d715d76d8c23_img.jpg\) File:Speed delta.png - Wiki Knowledge Base | Teltonika Mobility](#)
- [!\[\]\(0e0cdd76cf8fb3c858658faf72d7f324_img.jpg\) File:Yb nb.png - Wiki Knowledge Base | Teltonika Mobility](#)
- [!\[\]\(c7bdebfc2a52eab4f6683b0c1c0c28d2_img.jpg\) GH5200 - Wiki Knowledge Base | Teltonika Mobility](#)
- [!\[\]\(8a5c092736ceaf7cfeed23b17ea5e6ff_img.jpg\) GH5200 Manual - Wiki Knowledge Base | Teltonika Mobility](#)
- [!\[\]\(dd896e8effa212be4a7431ac3e5bf510_img.jpg\) Wiki Knowledge Base | Teltonika Mobility](#)
- [!\[\]\(1136f3a14b3ba5842784adf33e611db1_img.jpg\) Personal Trackers - Wiki Knowledge Base | Teltonika Mobility](#)
- [!\[\]\(d536ae100fbef949d5488b8fe23458f5_img.jpg\) File:120 s.png - Wiki Knowledge Base | Teltonika Mobility](#)
- [!\[\]\(ca07eb06779edef206c13bdfc2c41b40_img.jpg\) File:1h icon.png - Wiki Knowledge Base | Teltonika Mobility](#)
- [!\[\]\(7e7914364faa22e4d6649c877c7e723a_img.jpg\) File:300s icon 2.png - Wiki Knowledge Base | Teltonika Mobility](#)
- [!\[\]\(8ca478e471a5a40f192eb324324796da_img.jpg\) File:Accelerometer.png - Wiki Knowledge Base | Teltonika Mobility](#)
- [!\[\]\(1ef1c1e934c0d3468708b1b65c673a8e_img.jpg\) File:Angle 10 2.png - Wiki Knowledge Base | Teltonika Mobility](#)
- [!\[\]\(2feef24d2b62f527f17ec4a26c99892b_img.jpg\) File:Bw car.png - Wiki Knowledge Base | Teltonika Mobility](#)
- [!\[\]\(62fbabcb8f920179a05cac5e6f77b9ec_img.jpg\) File:Bw emi.png - Wiki Knowledge Base | Teltonika Mobility](#)
- [!\[\]\(ea93f456ce60033911637cde1e339ebc_img.jpg\) File:Bw explosive.png - Wiki Knowledge Base | Teltonika Mobility](#)
- [!\[\]\(5ee090fbd54350d5f2535fbbb0cd8843_img.jpg\) File:Bw hospital.png - Wiki Knowledge Base | Teltonika Mobility](#)
- [!\[\]\(4dd804f7f115c0312bcea2f969779146_img.jpg\) File:Bw petrol.png - Wiki Knowledge Base | Teltonika Mobility](#)
- [!\[\]\(0917fa5071e46a535e4715939ddc0471_img.jpg\) File:Bw switch.png - Wiki Knowledge Base | Teltonika Mobility](#)
- [!\[\]\(27fec434af9954d953dfa4171448e1b3_img.jpg\) File:Bw vehicle.png - Wiki Knowledge Base | Teltonika Mobility](#)