



TELTONIKA FMB+FMB Backup Tracker Instructions

[Home](#) » [teltonika](#) » TELTONIKA FMB+FMB Backup Tracker Instructions 



https://wiki.teltonika-gps.com/view/FMB%2BFMB_Backup_Tracker
FMB+FMB Backup Tracker

Contents

- [1 Introduction to Backup Tracker functionality](#)
- [2 Backup functionality logic](#)
- [3 Setup instructions](#)
- [4 Parsed data](#)
- [5 Documents / Resources](#)
 - [5.1 References](#)
- [6 Related Posts](#)

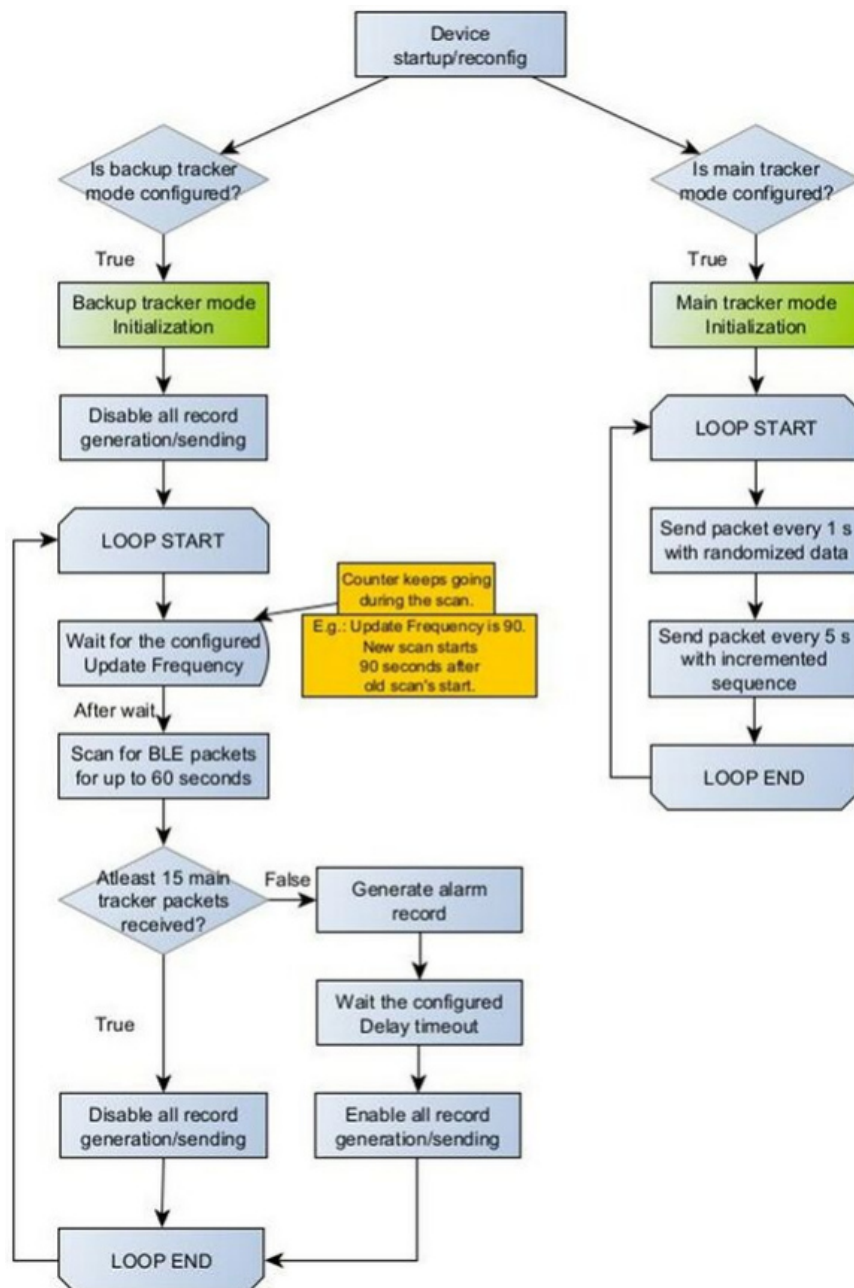
Introduction to Backup Tracker functionality

FMB+FMB Backup Tracker is a new feature which allows to transform device's work-mode to work as a backup tracker.

Each backup tracker's scan cycle lasts up to 60 seconds. If during those 60 seconds the Backup tracker is:

- Able to catch 15 valid Main tracker packets, the scan will stop and the device will wait for next cycle to start.
- Unable to catch at least 15 valid Main tracker packets, an alarm record will be generated with AVL ID 1153. After delay timeout (s) is reached, device will send that generated record to the server and enable other record generation/sending (Periodic and Eventual record).

Backup functionality logic



Each time the device is starts up or gets reconfigured, it checks if either main or backup tracker modes are enabled on the current configuration.

Both modes have some common initialization procedures:

- Check if Sleep Mode (ID: 102) is configured to Ultra Sleep (4). If it is, set Sleep Mode to Disabled (0). This means that both tracker modes overwrite configured Ultra Sleep mode and it's impossible to use Ultra Sleep mode with this functionality enabled;
- Non stop scanning (ID: 1115) is set Disable (0);
- BLE connection control (ID: 1112) is set to Prohibit (0);
- All BLE connectionless functionalities are set to Disabled (0).

Then, both modes have some unique initialization procedures (specific to the tracker mode): Main tracker mode:

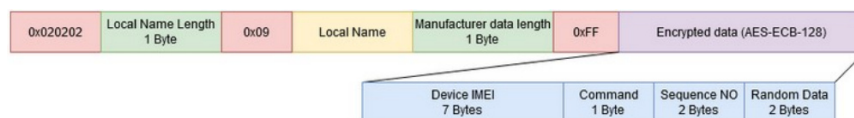
- Beacon Detection (ID: 134) is set to Disabled (0);
- BLE packet sending gets initialized and works according to flowchart.

Backup tracker mode:

- Beacon Detection (ID: 134) is set to All (1);
- All record generation is disabled. This means that if the device is not detecting the main tracker and starts generating records, it can be reconfigured or hard reset, and it will only start generating records again after the next failed scan (aka after next alarm record).
- Record sending is queued up to stop. Device waits for any currently queued up record sending to finish, so there might be a delay for this full record sending stop to occur.



Packet format



Parameter list

Parameter ID	Name	Data Type	Value range			Description
			Min	Max	Default	
70200	FMB Tracker mode	UInt8	0	2	0	0 – Disabled; 1 – Main; 2 – Backup.
70201	FMB Tracker mode	String	–	15	–	IMEI of the tracker which is configured as a main tracker
70202	Update frequency	UInt16	60	65535	120	Frequency, at which backup tracker should start scanning for Main Tracker BLE packets.
70203	Delay timeout	UInt16	0	65535	0	Delay, after which backup tracker starts sending records after an alarm occurs

Firmware compatibility

To start working with FMB + FMB functionality 03.27.13.Rev.452 firmware or newer will be required to be used. You can check what devices are compatible with using this firmware on [Compatibility table for FMB + FMB backup tracking](#) page.

Limitations

Since the feature relies on Bluetooth® functionality, all of the existing Bluetooth® limitations are applied. One of such limitations is the fact that FMB devices only store up to 100 BLE devices per scan. This means, that if there are more than 100 BLE devices in the surrounding environment, backup tracker being able to catch main tracker packets in time gets reduced.

Setup instructions

To ENABLE backup feature on FMBxxx device:

Both devices:

- Make sure Ultra Sleep mode → Disabled

Sleep Mode ⓘ

Sleep Settings

Disable	GPS Sleep
Deep Sleep	Online Deep Sleep
Ultra Sleep	

Timeout (min)

- Bluetooth® → BT Radio set to Enable(visible)

Security
System
GPRS
Data Acquisition
SMS \ Call Settings
GSM Operators
Features
Accelerometer Features
Auto Geofence
Manual Geofence
Trip \ Odometer
Bluetooth

General

BT Radio

Disable	Enable (hidden)
Enable (visible)	

Local Name

Local PIN

Security Mode

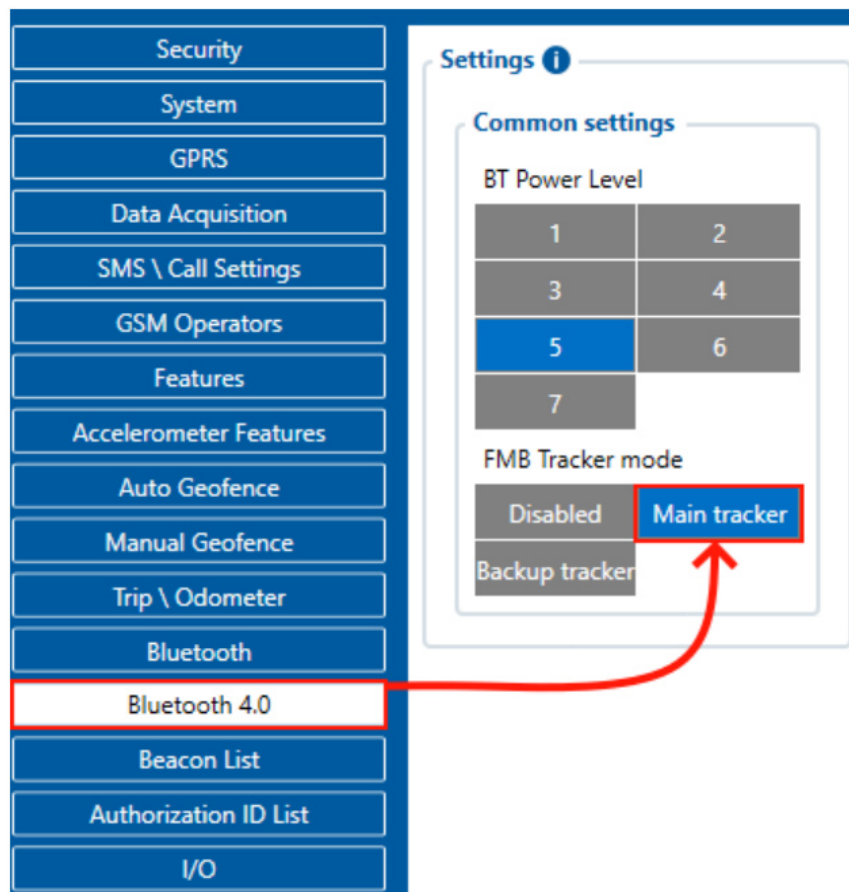
PIN only	PIN + MAC list
MAC list only	None

Auto Connect To External Device

Connection Mode

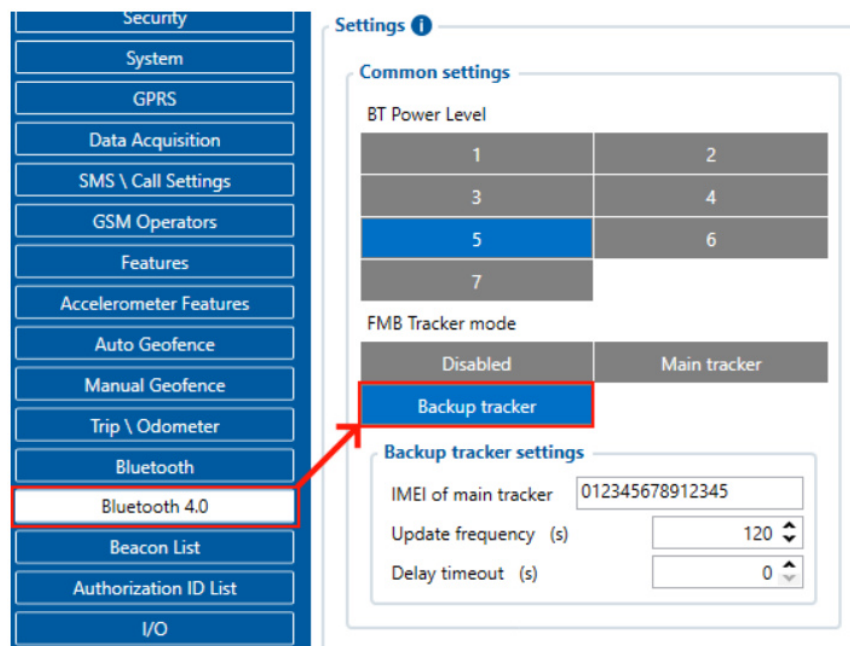
Main device:

- Bluetooth® 4.0 → select Main Tracker



Backup device:

- Bluetooth® 4.0 → select Backup Tracker
- Enter main device IMEI (15 digits)
- Set Update frequency to how frequent you want backup tracker to scan.
- Set Delay timeout to delay sending alarm record. Leave it default (0) if you want to immediately receive alarm record.



- Configure your APN and Server settings in GPRS section.

Parsed data

- [User Manual](#)

[Manuals+](#), [Privacy Policy](#)

This website is an independent publication and is neither affiliated with nor endorsed by any of the trademark owners. The "Bluetooth®" word mark and logos are registered trademarks owned by Bluetooth SIG, Inc. The "Wi-Fi®" word mark and logos are registered trademarks owned by the Wi-Fi Alliance. Any use of these marks on this website does not imply any affiliation with or endorsement.