



TELTRAN 470007 Wi-Fi Module for Monitor From IOS and Android Phone Installation Guide

[Home](#) » [TELTRAN](#) » TELTRAN 470007 Wi-Fi Module for Monitor From IOS and Android Phone Installation Guide 



**Wi-Fi Module for CP Series –
Monitor From IOS and Android Phone**



Wi-Fi Plug Pro

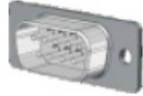
Quick Installation Guideline

Contents

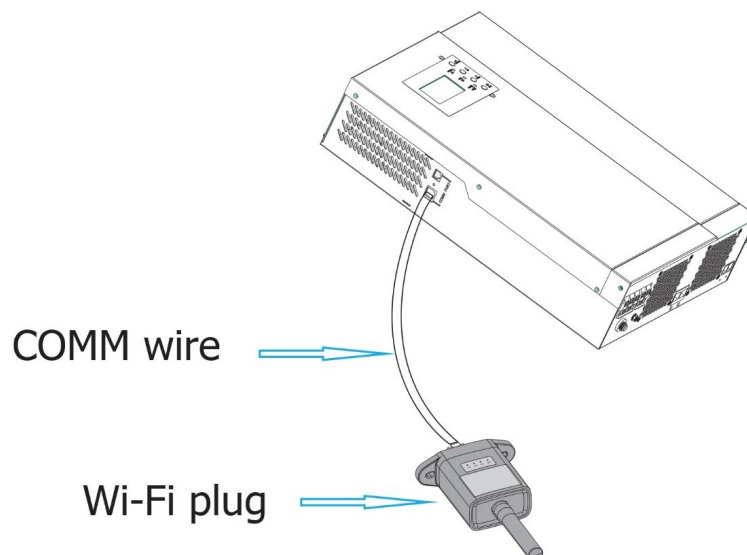
- 1 Installation
- 2 Wireless Router Connection
- 3 Create Account And Add Datalogger
- 4 Documents / Resources
 - 4.1 References

Installation

1. Find the corresponding interface code on the right table, according to the model of the datalogger.
2. Based on the corresponding icon, finish the installation according to the interface code.
3. Confirm the status of the LED light (After step2.3, when 4 LED light keep on, showing the normal working status).

Datalogger Model	Interface Code	Interface Icon
Wi-Fi Plug Pro	1	

Connect one end of the communication cable to the Wi-Fi module, and connect the other RJ45 port to the COMM port of the inverter and plug it in tightly.
Place the Wi-Fi module in a safe position and make it stable.
Please do not place it directly on the inverter to avoid interference.



Wireless Router Connection

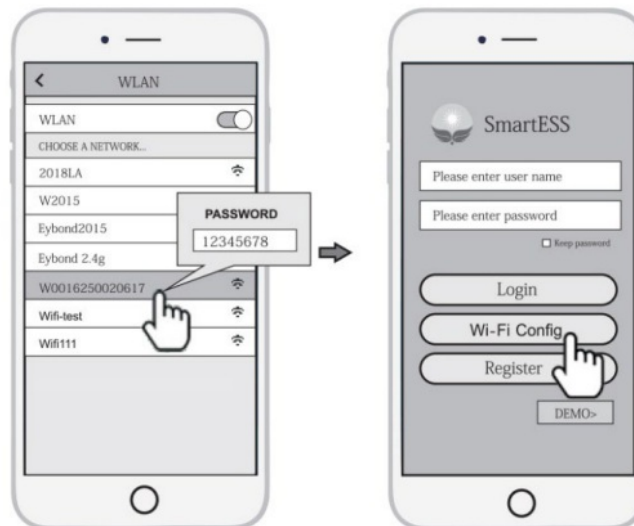
2.1. Download AP

1. Scan the QR Code on the right side and download the APP.

 <p>SmartESS(iOS)</p>	 <p>SmartESS(Android)</p>
https://itunes.apple.com/us/app/smartess/id1334656760	https://play.google.com/store/apps/details?id=com.eybond.smartclient.ess

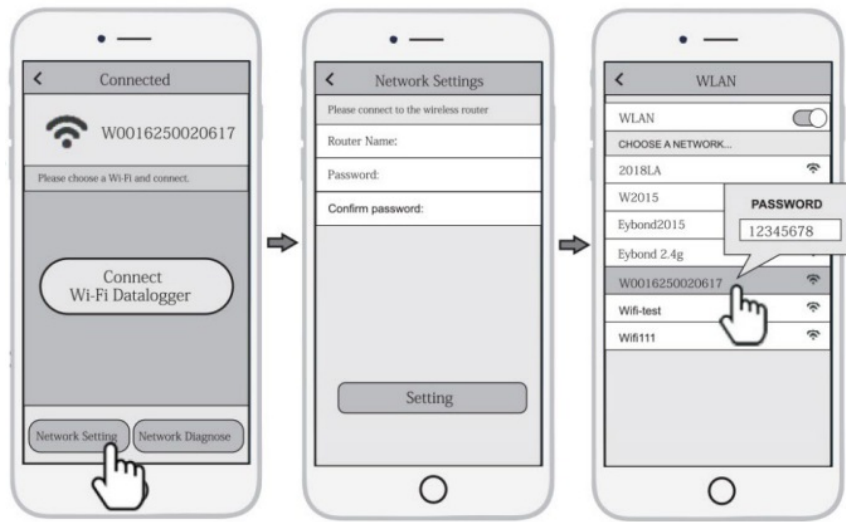
2.2. Connect Wi-Fi Datalogger

1. Select the same number of Wi-Fi Plug Pro PN to connect on your phone WLAN.
(InitialPassword:12345678)
2. Open the APP, tap the Wi-Fi Config button to enter this page.



2.3. Network Setting

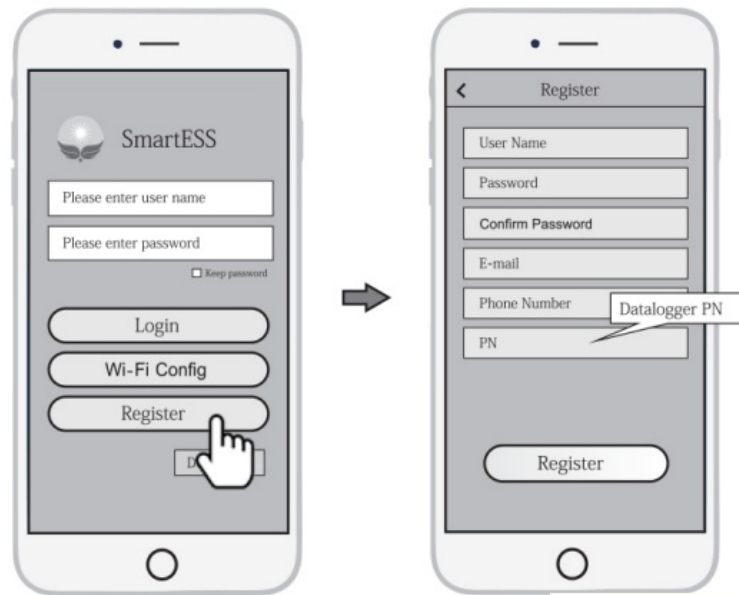
1. Then tap the Network Setting button.
2. According to the prompts, type in the information to finish the network setting.
3. After the Wi-Fi Plug Pro is restarted, reconnect the Wi-Fi which connected by step 2.1.



Create Account And Add Datalogger

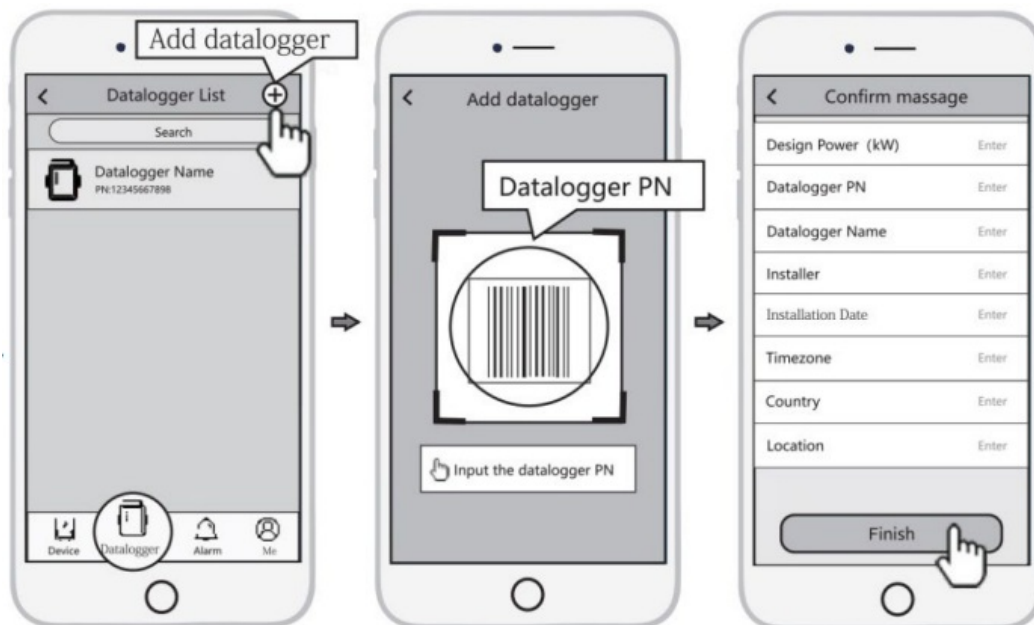
3.1. Create Account

1. Open the APP, tap the Register button to enter this page.
2. According to the prompts, type in the information to create an account.



3.2. Add Datalogger

1. Login the account and click the Datalogger button. Tap the "+" button on the top-right corner of the Datalogger page.
2. Scan the PN on the Wi-Fi Plug Pro, or input it manually.
3. According to the prompts, type in the information to finish add datalogger.



19 Hayezira St. Industrial Zone Ramla 7255616
www.telran.co.il | office@telran.co.il | fax. 03-5214524
 Technical support *2023
 | phone: 03-5575110

Documents / Resources



[TELRAN 470007 Wi-Fi Module for Monitor From IOS and Android Phone](#) [pdf] Installation Guide

470007, 470007 Wi-Fi Module for Monitor From IOS and Android Phone, Wi-Fi Module for Monitor From IOS and Android Phone, Module for Monitor From IOS and Android Phone, Monitor From IOS and Android Phone, IOS and Android Phone, Android Phone, Phone

References

- [Home](#)
- [User Manual](#)

[Manuals](#), [Privacy Policy](#)

This website is an independent publication and is neither affiliated with nor endorsed by any of the trademark owners. The "Bluetooth®" word mark and logos are registered trademarks owned by Bluetooth SIG, Inc. The "Wi-Fi®" word mark and logos are registered trademarks owned by the Wi-Fi Alliance. Any use of these marks on this website does not imply any affiliation with or endorsement.