

TELOX **MT-100** **Smart LTE** **Terminal**



TELOX MT-100 Smart LTE Terminal User Guide

[Home](#) » [TELOX](#) » [TELOX MT-100 Smart LTE Terminal User Guide](#) 

Contents

- [1 TELOX MT-100 Smart LTE Terminal](#)
- [2 Product Overview](#)
- [3 Check List](#)
- [4 Before Use](#)
- [5 Charging](#)
- [6 FCC STATEMENT](#)
- [7 Contact](#)
- [8 Documents / Resources](#)
 - [8.1 References](#)



TELOX MT-100 Smart LTE Terminal

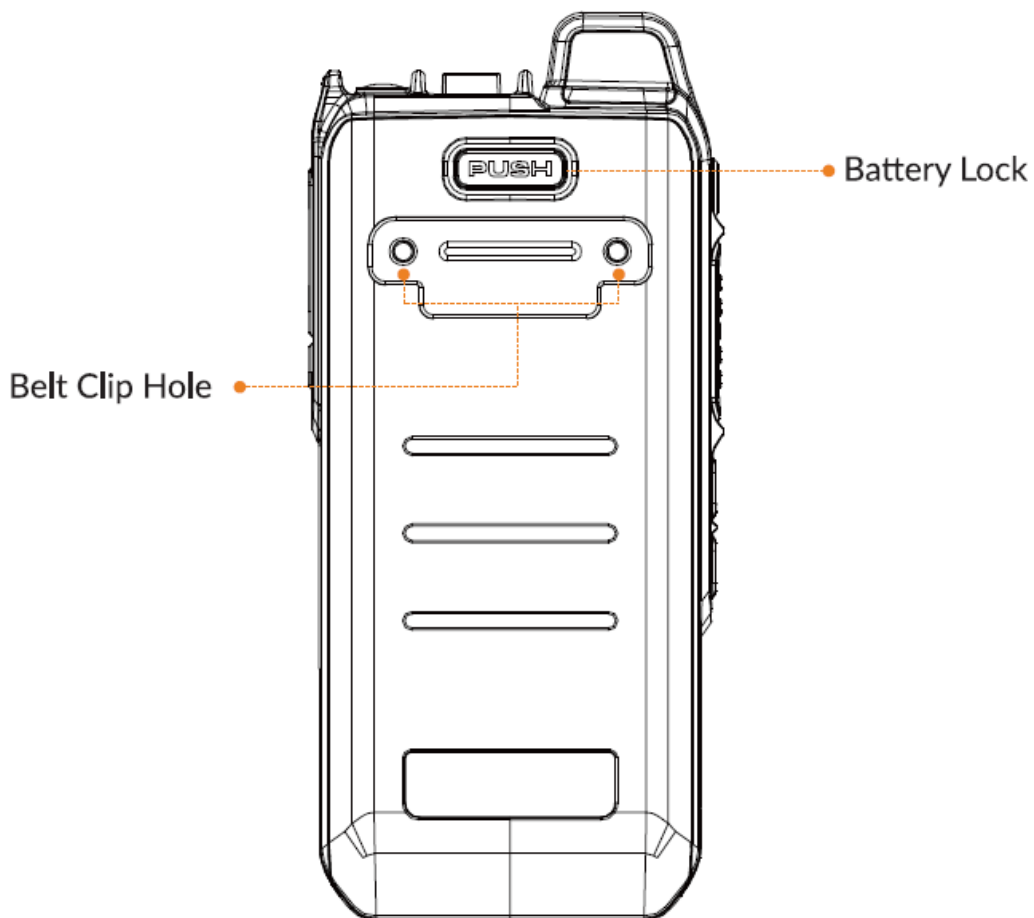


Thanks for choosing our product!

This Quick Start Guide only applicable to: MT-100.

Before using the product, please read the Quick Start Guide to fully benefit from it.

Product Overview



Indicators

Operating State	Indication
Low Battery	Red(Blinking)
Charging	Red(Steady)
Fully Charged	Green(Steady)
PTT Transmitting	Red(Steady)
PTT Receiving	Green(Steady)

Note

- The warranty period for the MT-100 is 1 year from the date of purchase.
- This product involves constant upgrading and/or improvement, our company reserves the right to change the specifications of software and/or hardware mentioned in this operating guide without any prior notice. The product specifications and information mentioned in the operating guide are for reference only.

Check List



MT-100×1



Battery×1



Travel Charger×1



USB-C Cable×1



Belt Clip×1

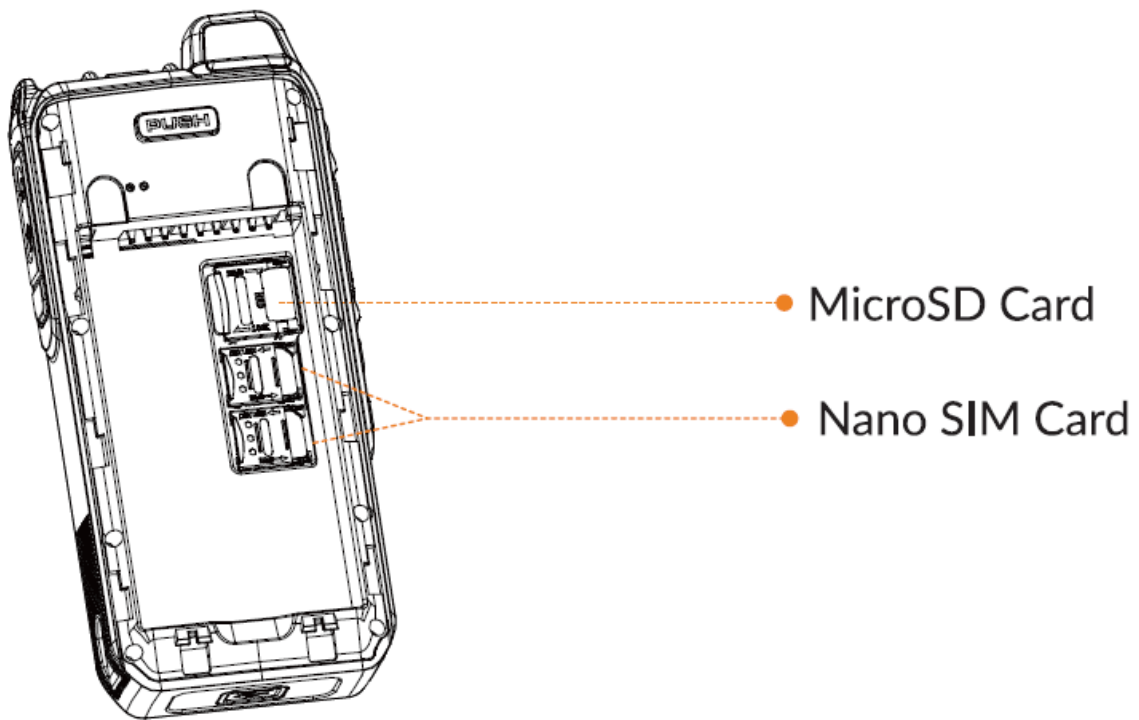


Quick Start Guide×1

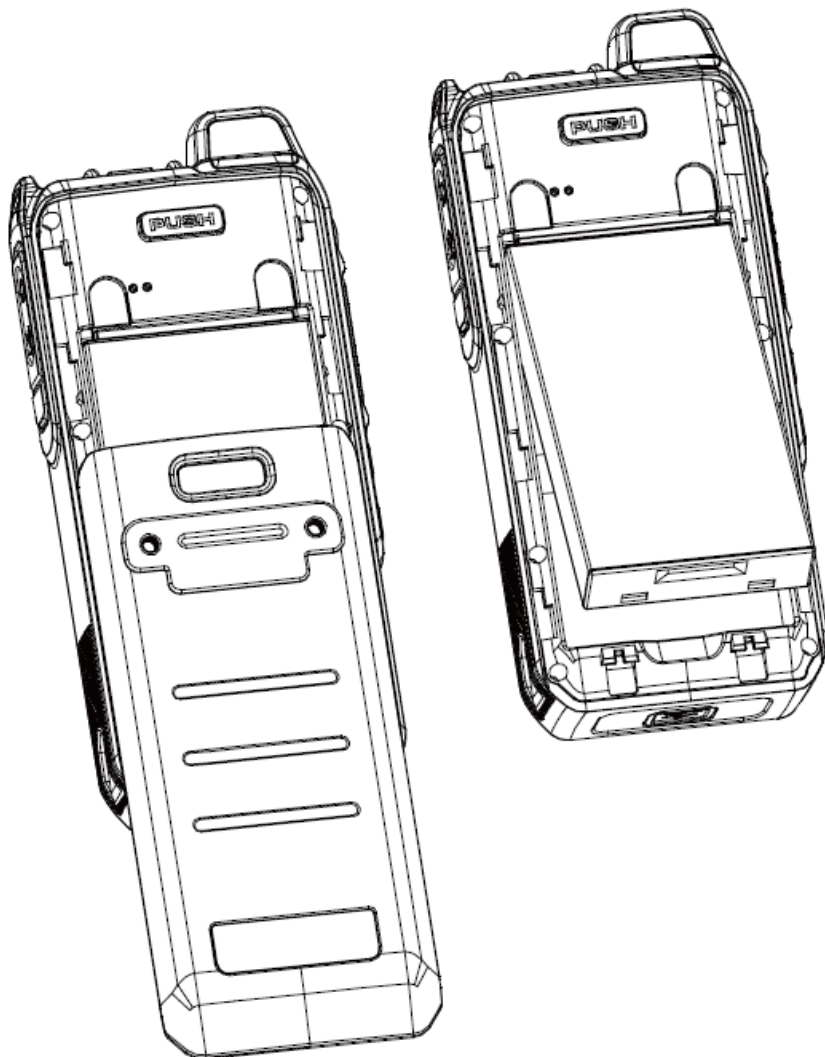
Notice:

- Please check the above accessories before you discard the packing material. Please contact your local dealer immediately if there is any missing or damage parts.

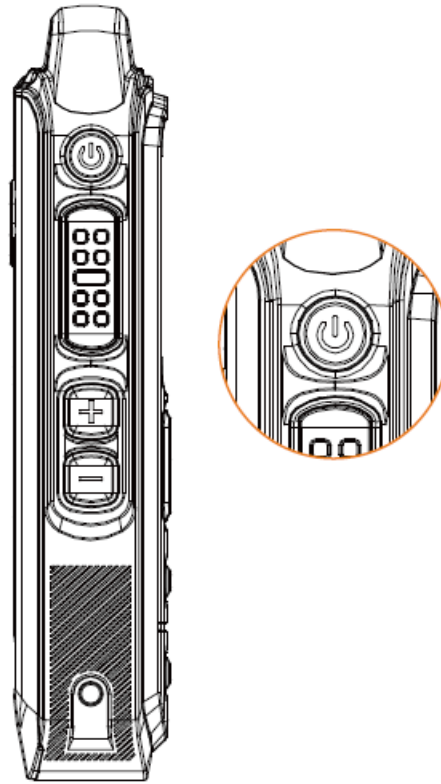
Before Use



1. Insert the SIM/TF card into its slot. SIM card can be inserted in SIM 1 or SIM 2, or two cards for both.

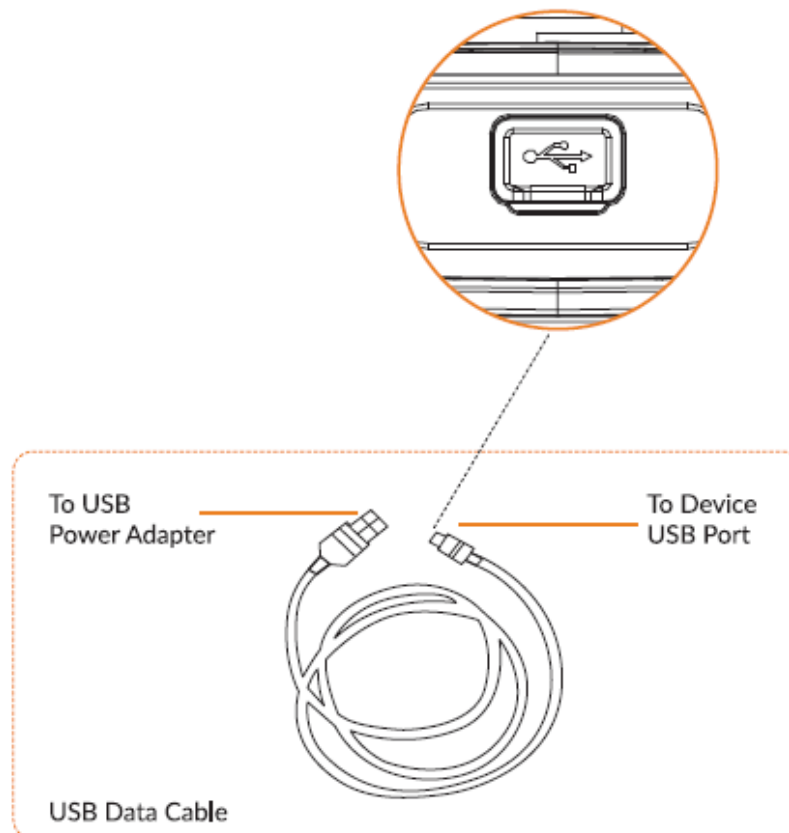


2. Put the battery into the compartment, then put on the cover and lock.



3. Press and hold the power button until the screen lights up to turn on the device. Press the power button to put the device screen to sleep, press again to wake it up.

Charging



- Connect the LTE handheld and power adapter using the USB Data Cable.
- Red light on the LTE handheld indicates battery charging in progress.
- Green lights on indicates fully charged.

Notice

- Always use Telox Original batteries and chargers. The warranty does not cover damage caused by non-Telox batteries and/or chargers.

Caution

- Although your device is quite sturdy, it is a complex piece of equipment and can be broken. Avoid dropping, hitting or bending, or sitting on it.
- Make sure the charger/USB port, microSD card/SIM card slot covers are properly seated, with no foreign objects obstructing the seals.
- Do not use the charger/USB port for charging, data transmission, etc. until the phone is completely dry.
- Do not store the device under any circumstance containing electronic erosive material.
- Avoid to pull the device up by holding the antenna or accessories.
- Please power off and unload the battery before cleaning the device.
- Using dry and clean lint-free cloth or hairbrush to keep the device and charger docking port clean.
- Avoid to use any chemical agent including detergent, alcohol, aerosol spray or oil preparations as cleaning solution.
- Dry your device completely after cleaning and before using it again.

FCC STATEMENT

15.19 Labeling requirements

This device complies with part 15 of the FCC Rules. Operation is subject to the following two conditions:

1. This device may not cause harmful interference
2. This device must accept any interference received, including interference that may cause undesired operation.

15.21 Information to user.

- Any Changes or modifications not expressly approved by the party responsible for compliance could void the user's authority to operate the equipment.

15.105 Information to user.

This equipment has been tested and found to comply with the limits for a Class B digital device, pursuant to Part 15 of the FCC Rules. These limits are designed to provide reasonable protection against harmful interference in a residential installation. This equipment generates uses and can radiate radio frequency energy and, if not installed and used in accordance with the instructions, may cause harmful interference to radio communications. However, there is no guarantee that interference will not occur in a particular installation. If this equipment does cause harmful interference to radio or television reception, which can be determined by turning the equipment off and on, the user is encouraged to try to correct the interference by one or more of the following measures:

- Reorient or relocate the receiving antenna.
- Increase the separation between the equipment and receiver.

- Connect the equipment into an outlet on a circuit different from that to which the receiver is connected.
- Consult the dealer or an experienced radio/TV technician for help.

Specific Absorption Rate (SAR) information:

This product meets the government's requirements for exposure to radio waves. The guidelines are based on standards that were developed by independent scientific organizations through periodic and thorough evaluation of scientific studies. The standards include a substantial safety margin designed to assure the safety of all persons regardless of age or health.

FCC RF Exposure Information and Statement

The SAR limit of USA (FCC) is 1.6 W/kg averaged over one gram of tissue. This device was tested for typical body-worn operations when the device used at 25mm from front face and 10mm from the product, 0mm from the belt, for maintain compliance with FCC RF exposure requirements. The use of belt clips, holsters and similar accessories should not contain metallic components in its assembly. The use of accessories that do not satisfy these requirements may not comply with FCC RF exposure requirements, and should be avoided.

CE Warning



1. Use careful with the earphone maybe excessive sound pressure from earphones and headphones can cause hearing loss.
2. Risk of explosion if battery is replaced by an incorrect type. Dispose of used batteries according to the instructions.
3. The product shall only be connected to a USB interface of version USB2.0 or higher.
4. Adapter shall be installed near the equipment and shall be easily accessible.
5. **EUT Operating temperature range:** -20° C to 50° C.
6. **Adapter:** The plug considered as disconnect device of adapter

Power supply and ADP (rating):

- **Input:** AC 100- 240V, 50/60Hz 0.3A
 - **Output:** DC 5V 2A
7. The device complies with RF specifications when the device used at 5mm from the body without belt-clips, 0mm from the body with the belt-clips, 25mm from the face.
 8. To prevent possible hearing damage. Do not listen at high volume levels for long periods.

Hereby, Telo Communication (Shenzhen) Co., Ltd declares that this Mobile phone product is in compliance with essential requirements and other relevant provisions of Directive 2014/53/EU. This product is allowed to be used in all EU member states.

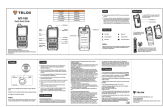
Contact

Telo Communication (Shenzhen) Co., Ltd

- **Tel:** +86-755-86950766
- **E-mail:** sales@telox.com
- **Add:** 6/F, No.42 Liuxian 1st Road, Bao'an District, Shenzhen, China

- www.telox.com

Documents / Resources

	<p>TELOX MT-100 Smart LTE Terminal [pdf] User Guide MT-100 Smart LTE Terminal, MT-100, Smart LTE Terminal, LTE Terminal, Terminal</p>
---	---

References

- [User Manual](#)

Manuals+, Privacy Policy

This website is an independent publication and is neither affiliated with nor endorsed by any of the trademark owners. The "Bluetooth®" word mark and logos are registered trademarks owned by Bluetooth SIG, Inc. The "Wi-Fi®" word mark and logos are registered trademarks owned by the Wi-Fi Alliance. Any use of these marks on this website does not imply any affiliation with or endorsement.