



Telos Alliance xNode2 Broadcast Audio Interfaces



Telos Alliance xNode2 Broadcast Audio Interfaces User Guide

[Home](#) » [Telos Alliance](#) » **Telos Alliance xNode2 Broadcast Audio Interfaces User Guide** 

Contents

- [1 Telos Alliance xNode2 Broadcast Audio Interfaces](#)
- [2 Installation Steps](#)
- [3 Specifications](#)
- [4 FAQ](#)
- [5 Documents / Resources](#)
 - [5.1 References](#)
- [6 Related Posts](#)



Telos Alliance xNode2 Broadcast Audio Interfaces



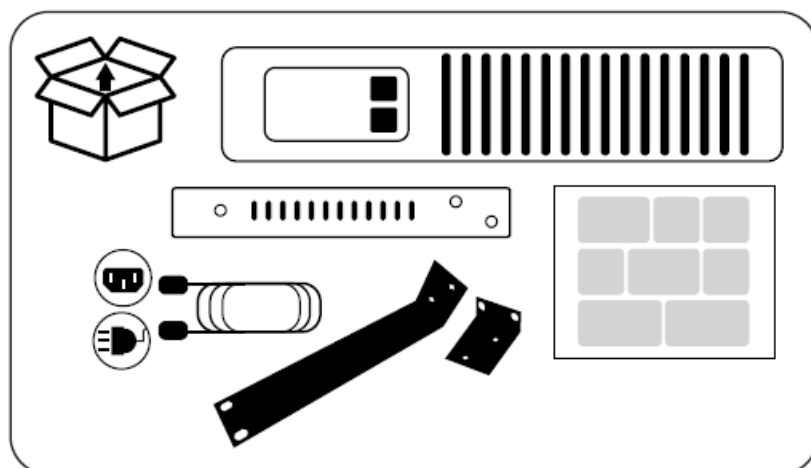
Quick Start Guide

Telos Alliance xNode2 IP Audio Interface

Unboxing and Setup

Upon opening the package, you will find the following components:

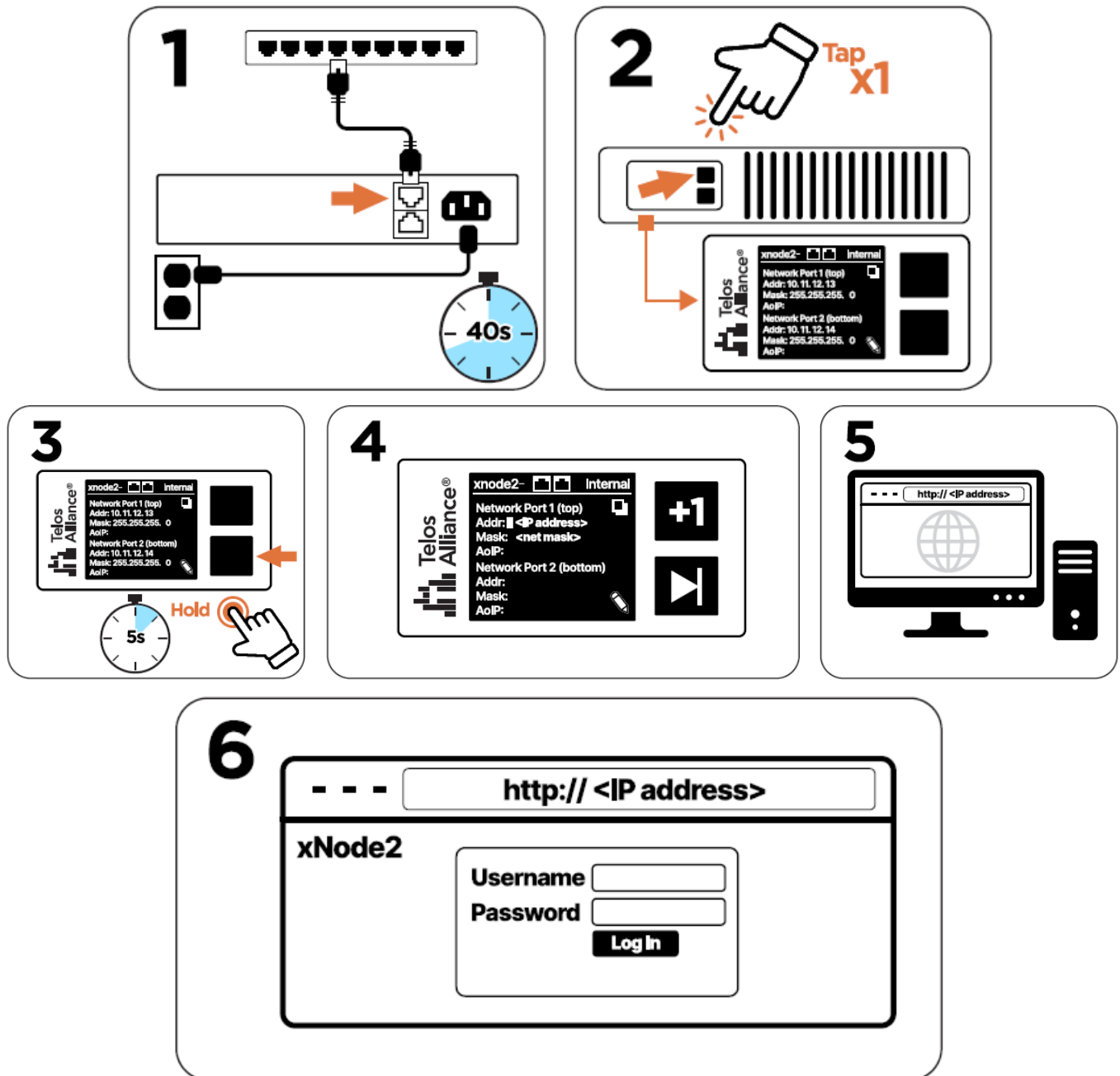
- xNode2 Unit
- Rack Mounting Brackets
- Power Cable
- Network Cables
- Other Accessories



Installation Steps

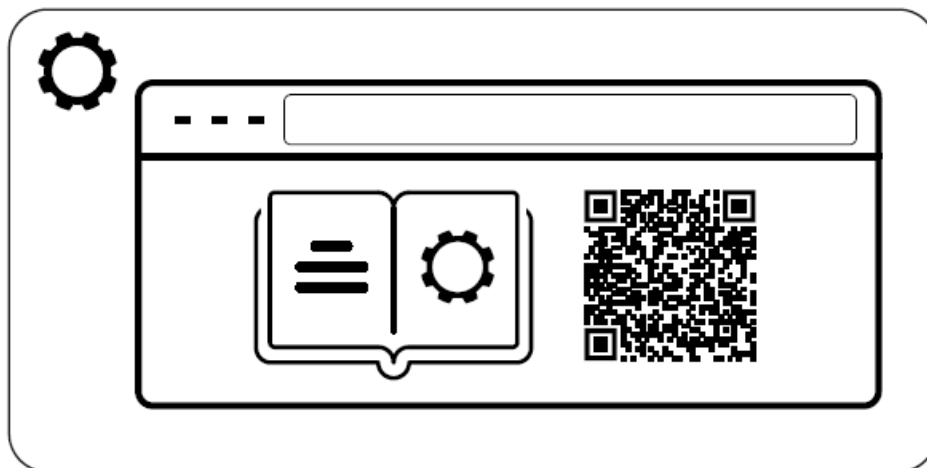
1. Connect the xNode2 to a power source and network switch. Allow approximately 40 seconds for the device to boot up.
2. Press the power button once to activate the device.
3. Hold the button for 5 seconds to reset the network settings if necessary.
4. Configure the network settings on the display screen:
 - Network Port 1 (top): Enter IP address, subnet mask, and AoIP settings.

- Network Port 2 (bottom): Enter IP address, subnet mask, and AoIP settings.
5. Access the xNode2 interface by entering the IP address into a web browser on a connected computer.
 6. Log in using your username and password.



Additional Resources

For further information and detailed documentation, visit: docs.telosalliance.com/xnode2




Specifications

Component	Description
xNode2 Unit	IP Audio Interface Device
Network Ports	Two network ports for connection
Power Supply	Standard power cable included

FAQ

- **How do I reset the network settings?**
 - Hold the power button for 5 seconds to reset the network settings.
- **Where can I find the IP address for the xNode2?**
 - The IP address is displayed on the device screen after setup.
- **What should I do if I cannot access the web interface?**
 - Ensure the device is properly connected to the network and that the correct IP address is entered in the browser.

Documents / Resources

	Telos Alliance xNode2 Broadcast Audio Interfaces [pdf] User Guide xNode2, xNode2 Broadcast Audio Interfaces, Broadcast Audio Interfaces, Audio Interfaces
---	--

References

- [User Manual](#)

[Manuals+.](#) [Privacy Policy](#)

This website is an independent publication and is neither affiliated with nor endorsed by any of the trademark owners. The "Bluetooth®" word mark and logos are registered trademarks owned by Bluetooth SIG, Inc. The "Wi-Fi®" word mark and logos are registered trademarks owned by the Wi-Fi Alliance. Any use of these marks on this website does not imply any affiliation with or endorsement.