



## TELLUR WiFi Motion Sensor User Manual

[Home](#) » [Tellur](#) » TELLUR WiFi Motion Sensor User Manual 

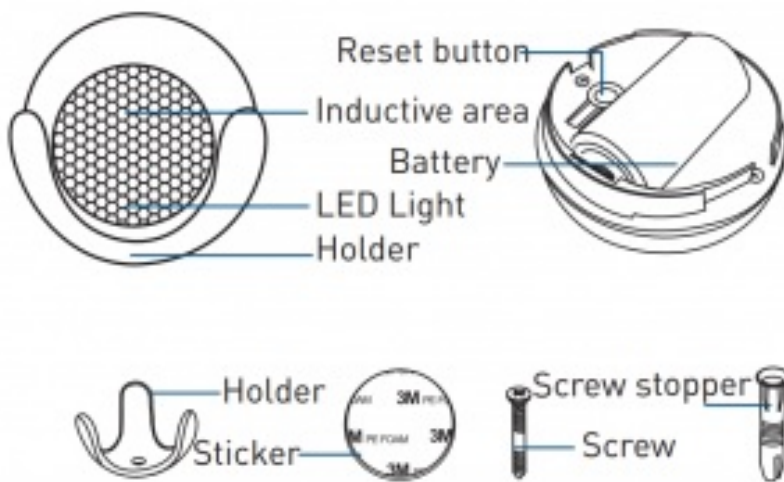
### TELLUR WiFi Motion Sensor



## Contents

- [1 Product Diagram](#)
- [2 Specifications](#)
- [3 LED State](#)
- [4 How to reset?](#)
- [5 Product features](#)
- [6 Failed to add device?](#)
- [7 Declaration of conformity](#)
- [8 Documents / Resources](#)
- [9 Related Posts](#)

## Product Diagram



## Specifications

- **Power supply:** 1 x CR123A 3V (included)
- **Battery life:** Up to 1 year (triggered 7 times/day)
- **Sensor type:** PIR (Passive Infrared Sensor)
- **Refresh time:** 1 per minute
- **Detection distance:** Up to 6 meters
- **Push notifications:** Yes
- **Tamper notifications:** Yes
- **Low battery notifications:** Yes
- **History record:** Yes
- **WiFi standard:** IEEE 802.11b/g/n
- **Supported WiFi network:** 2.4GHz
- **Dimensions:** 5cm x 4.8cm x 4.8cm
- **Weight:** 50gr
- **Color:** White
- **Operating temperature:** 0° – 40°
- **Operating humidity:** 20% – 85%

## LED State

Device Status	LED State
EZ mode	Indicator flashes quickly
AP mode	Indicator flashes slowly
Triggered	LED indicator will rapidly blink, and it will turn OFF after the scheduled time
Suspend mode	LED indicator is off
Reset	LED indicator lights up for 4 seconds and after 2 seconds, the lights will turn off; the device goes into configuration mode

## How to reset?

- (1) Press the reset button for 6 seconds until the LED indicator is flashing rapidly. The device will enter EZ mode.
- (2) Press the reset button again for 6 seconds until the LED indicator is flashing slowly. The device turns to AP mode.

## Product features

Experience the various advanced features of this product using Tellur Smart app.

### Main function

Operate status: alarm/normal (the device can be triggered only once in 1 minute)

Alarm recording: click "HISTORY". Turn Off/On push notification: click "NOTICE".

### Linkage alarm setting

This function allows to connect two Sensors via scene setting.

### Device sharing

It allows other people to control the device. You can share the device with the added family members.

### Push notification

Open/close push notification.

### Remove device

Restore default settings. It is necessary to delete and add the device again, to clear the record by APP.

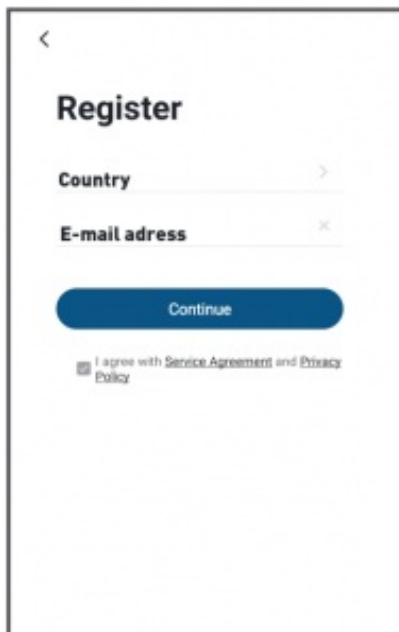
Download and install the **Tellur Smart App** for either iOS or Android devices.



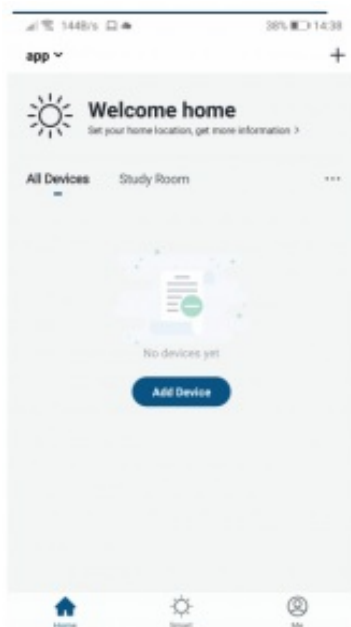
Once downloaded, the app will ask you to register your device. Enter your phone number or email and select the country you live in.

If you register by phone number, you will receive a text message with a registration code. Input the code to finish your registration.

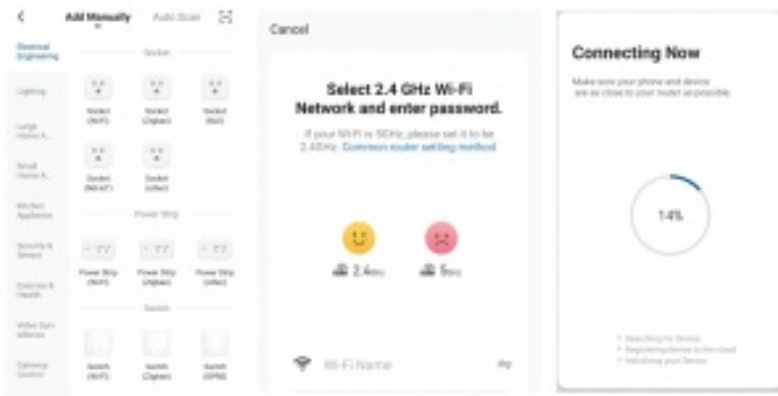
If you register by email, please create a password for your Tellur Smart account.

A screenshot of the 'Register' screen in the Tellur Smart app. At the top left is a back arrow. The title 'Register' is centered. Below it are two input fields: 'Country' with a right-pointing arrow icon and 'E-mail address' with a right-pointing arrow icon. A blue 'Continue' button is positioned below the email field. At the bottom, there is a checkbox labeled 'I agree with Service Agreement and Privacy Policy'.

## Adding a New Device



- Turn on power of device being paired and make sure light is flashing quickly.
- Open App and Click “+” to add appropriate device.
- Select WiFi network and input password of WiFi then.
- Once connected the App will prompt the connection, then you can rename the device or just click “done”.
- Once App is installed on your device and you have added your smart device to your app you will be able to control it.



## Failed to add device?

1. Make sure the device is powered on.
2. Check the WiFi connection of your phone.
3. Check if the device is in pairing mode.

Reset your smart device to enter pairing mode. Please refer to the “How to reset device” section

4. Check router or related:

If you use a dual-band router, select the 2.4GHz network to add the device. You also need to enable the router’s broadcasting function. Set encryption method as WPA2-PSK and authorization type as AES, or set both on “auto”.

5. Check if the WiFi signal is strong enough. To maintain the signal strong, keep your router and the smart device as close as possible.
6. Wireless mode should be 802.11.b/g/n
7. Make sure you don’t exceed the maximum number of registered devices supported by the app (150).
8. Check if the router’s MAC filtering function is enabled. If so, remove the device from the filter list and make sure the router is not prohibiting the device connection.
9. Make sure the WiFi password entered in the app is

## EZ and AP connection modes:

Smart devices can be connected using two modes: EZ

EZ represents the easiest way of connecting and enabling a smart device. You will need to have the device, active wireless network through with login password and Tellur Smart APP installed on a smartphone / tablet. AP mode can be used to configure and enable a smart device first with the smartphone / tablet and later on to the Wi-Fi network.

## How to add device under EZ mode?

1. Make sure the LED indicator/light flashes quickly.
2. Make sure the phone is connected to WiFi.
3. Tap “Add device” in Tellur Smart app and enter the WiFi’s network password.
4. In the device list, select the device you want to pair and add it.

## How to add device under AP mode?

1. Make sure the LED indicator/light flashes slowly.
2. Tap “Add device” in Tellur Smart app and select “AP mode” from the top-right corner. Connect to the device’s hotspot first and then proceed to connect it to the WiFi network.
3. Tap “Next” to add device.

### **Can I control device with 2G/3G/4G network?**

When adding the device for the first time, the device and the phone need to be connected to the same WiFi network. Once the device has been successfully paired with Tellur Smart app, you can remotely control it via 2G/3G/4G networks. How can I share my device with family? Open Tellur Smart app, go to “Profile” -> “Device sharing” -> “Sharing sent”, tap “Add sharing” and share the device with the added family members. Notice – users have to install the Tellur Smart app on their device in order to see shared devices.

### **How can I manage the devices shared by others?**

Open App, go to “Profile” > “Device Sharing” > “Sharings Received”, then you can find the devices shared by other users. It also allows to add remarks to users or delete certain sharings by long pressing or swiping left.



### **Disposal and recycling information**

The crossed-out wheeled-bin symbol on your product, battery, literature or packaging reminds you that all electronic products and batteries must be taken to separate waste collection points at the end of their working lives; they must not be disposed of in the normal waste stream with household garbage. It is the responsibility of the user to dispose of the equipment using a designated collection point or service for separate recycling of waste electrical and electronic equipment (WEEE) and batteries according to local laws. Proper collection and recycling of your equipment helps ensure EEE waste is recycled in a manner that conserves valuable materials and protects human health and the environment, improper handling, accidental breakage, damage, and/or improper recycling at the end of its life may be harmful for health and environment.

### **Declaration of conformity**

We, ABN SYSTEMS INTERNATIONAL S.R.L., Bucharest, Sector 1, Marinariilor street, nr. 31, we declare on own responsibility that the product below:

Product description: Tellur WiFi Motion Sensor, PIR, White Brand: Tellur

Product code: TLL331121

It does not endanger life, health, work safety, does not have a negative impact on the environment and corresponds to the standards stated in the manufacturer’s declaration of conformity.

The product is in compliance with the following standards and / or other normative documents: RED – 2014/53/EU

### **Applied standards:**

**EMC:** ETSI EN 301 489-1 V2.2.0 (2017-03)

ETSI EN 301 489-17 V3.2.0 (2017-03)

**Radio:** ETSI EN 300 328 V2.1.1 (2016-11)

**Health:** EN 62311:2008

**Safety:** EN

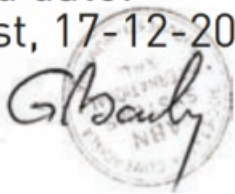
60950-1:2006+A11:2009+A1:2010+A12:2011+A2:2013 RoHS – 2011/65/EU (RoHS 2.0)

The product bears CE mark, applied in 2019


**Name:** George Barbu

**Function:** General manager

Place and date:  
Bucharest, 17-12-2019  
Signed:



## Documents / Resources

	<p><a href="#">TELLUR WiFi Motion Sensor</a> [pdf] User Manual WiFi Motion Sensor, TLL331121</p>
---	--

Manuals+.