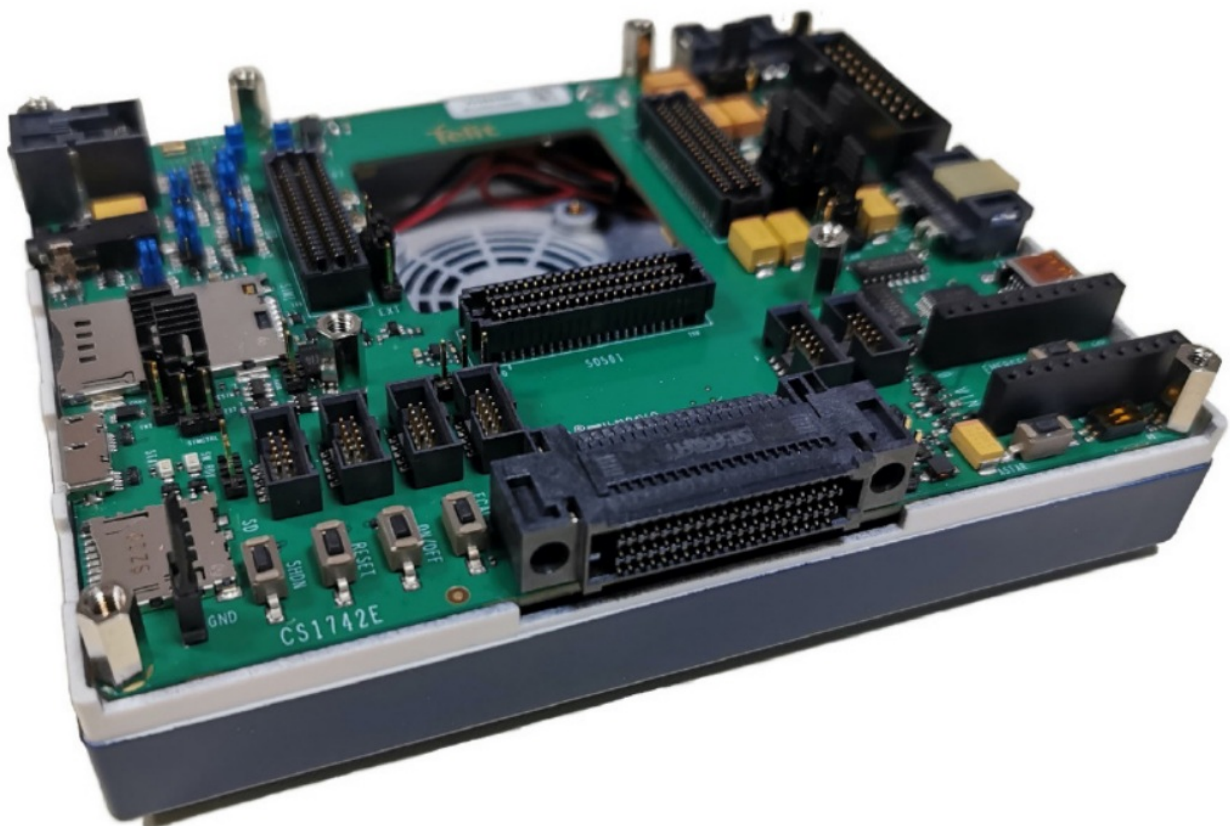


Telit EVB IoT Device Development Kit User Guide

[Home](#) » [Telit](#) » Telit EVB IoT Device Development Kit User Guide 

Telit EVB IoT Device Development Kit ‘



This Quick Start Guide will walk you through the easy steps required to setup the evaluation board for your wireless application.

The EVB is a tool designed for engineers, programmers and developers allowing to connect and use all the Telit Modules Interfaces.

Before starting, please connect your chosen Telit module interface to the EVB.

Contents

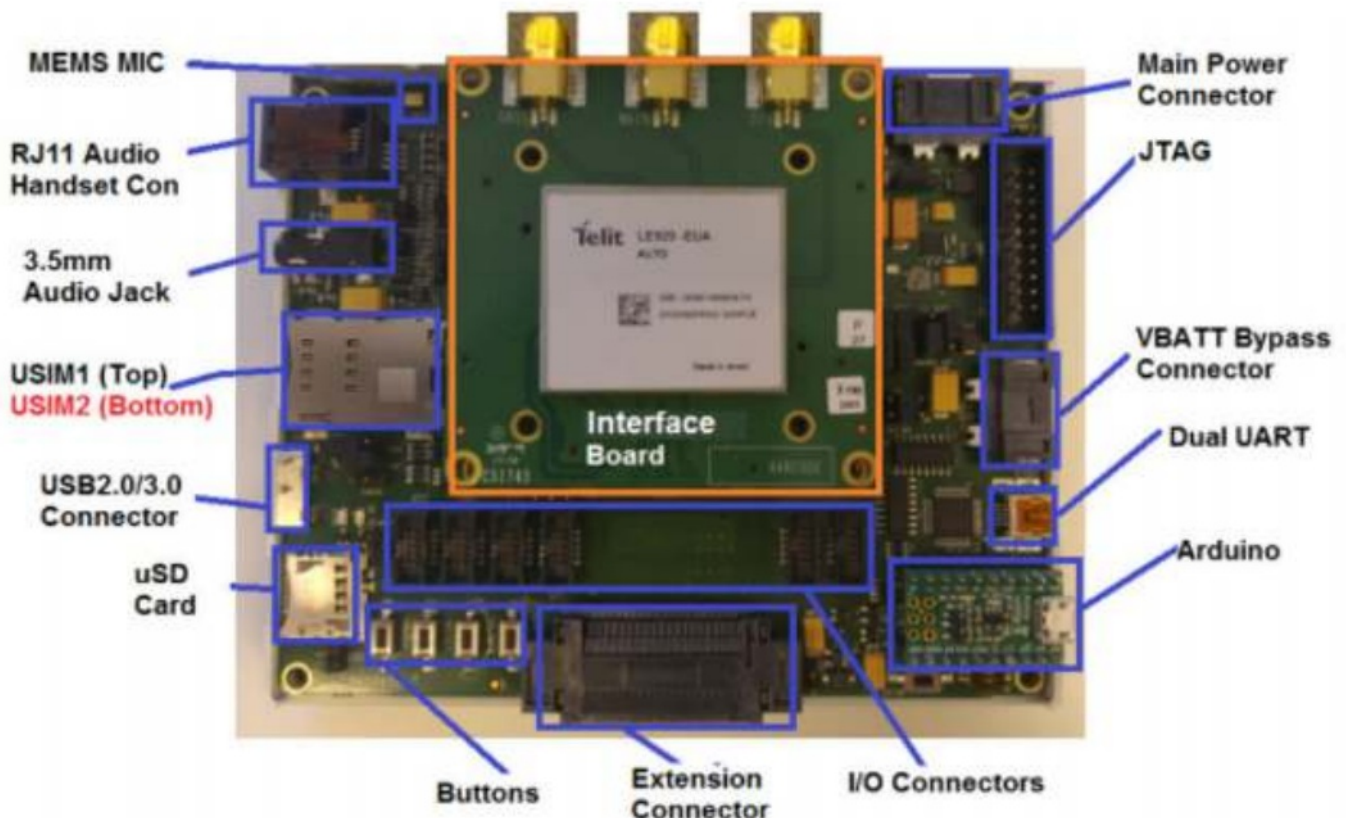
- 1 Getting started is easy
- 2 Run the EVB with your module
 - 2.1 Plug the module on your EVB
 - 2.2 Connect the board with the PC
 - 2.3 Power Supply
 - 2.4 Power On
- 3 Configure the EVB with your module
 - 3.1 Telit AT Controller (TATC)
 - 3.2 Install TATC
 - 3.3 Configure TACT
- 4 Documents / Resources
 - 4.1 References
- 5 Related Posts

Getting started is easy

Your Telit EVB kit contains the following:

- Main board · Socket for embedded module interface board
- Power supply adapter & power cable · Micro USB Cable
- Mini USB Cable · Cellular Antenna

The picture below shows a typical evaluation board (EVB) platform consisting of an EVB main board and a TLB (Translation Board). In the setup depicted below, a Telit LE920 module is mounted: EVB IoT Device Development Kit – Quick Start Guide



Run the EVB with your module

Install the proper PC drivers

Telit provides two different installers according to the host system architecture (x86 or x64).

In the link below you can find the available set of USB drivers <https://www.telit.com/developer-zone/iot-device-prototyping-kit/> With the EVB disconnected from the PC, please run the installer package and, after the welcome screen, follow the instructions of the Windows® Wizard.



Plug the module on your EVB

Please contact your Telit representative for the list of available extension module that can be used with the EVB. Plug the module on the evaluation board, making sure that the EVB and adapter connectors are properly mated .

Connect the board with the PC

Plug the USB cable, one end of the USB port to Evaluation Board and the other end of the USB port to your PC or laptop.

Power Supply

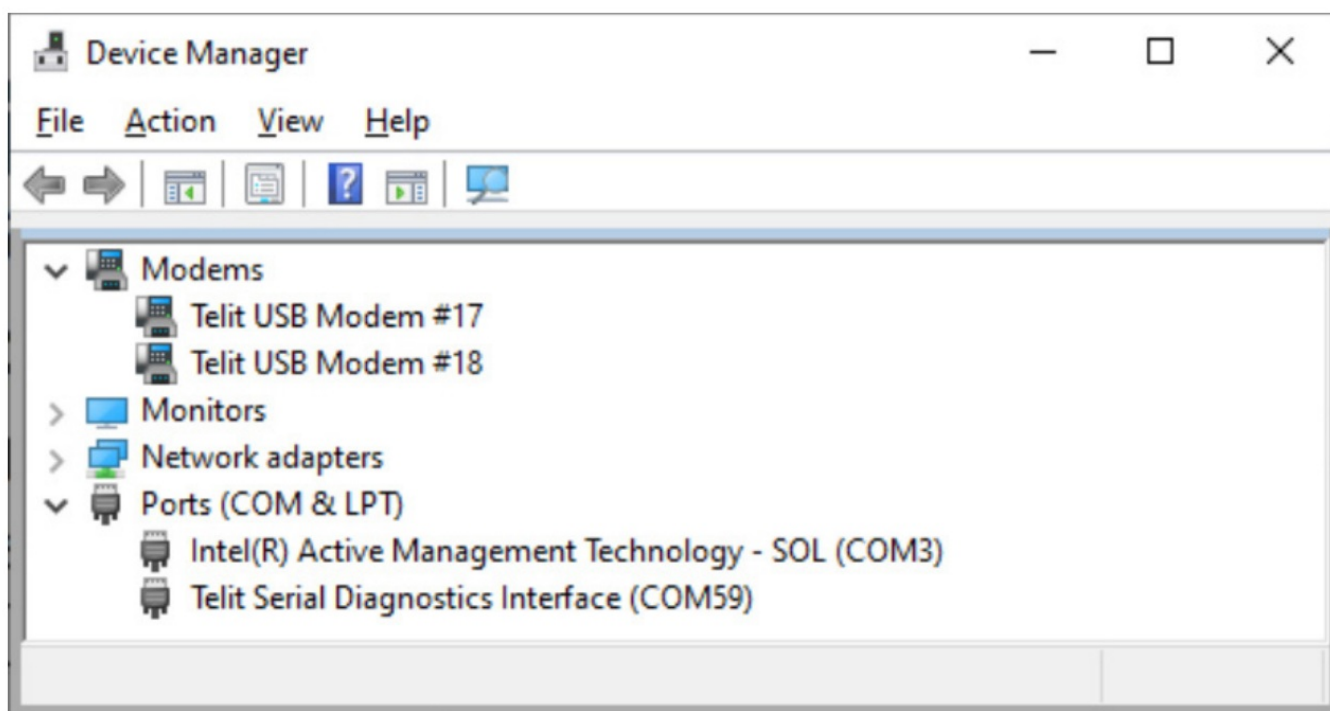
Connect the power supply adapter and the external power cable to your board

Power On

The ON/OFF functionality and its use is depending on the used module. Please refer to the related Module's Hardware User Guide and Interface User Guide. Typically, to turn on the module, the ON/OFF button must be pressed for at least 5 seconds and then released. The table below contains typical intervals for which the button must be pressed for some Telit modules.

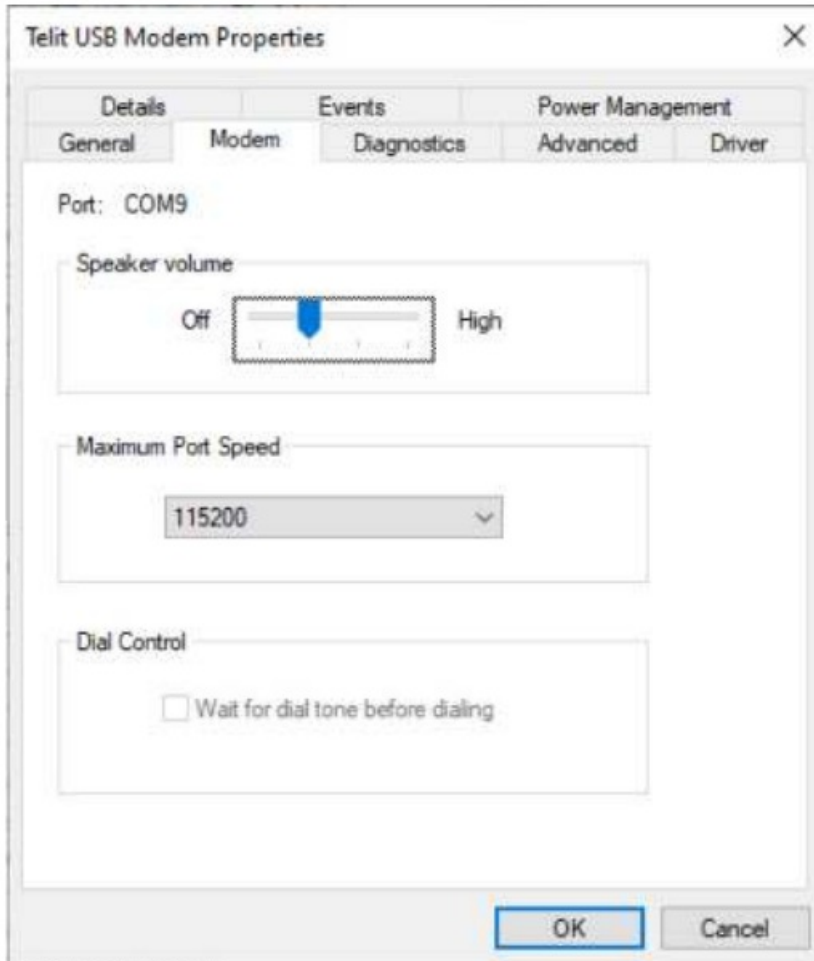
Module	Interval
HE910	5sec
OE910	1sec
GE910	5sec
GI!.910-V3	5sec
C&910	1.5soc
UE010	5sec
LE910-V2	5sec
UI910-V2	1sec
L.E91-0	1sec
LE91OC1	1sec

On your PC, please go to **Control Panel > Device Manager** and check the COM port number. The screenshot below reports an example of the port composition listed on Windows 10 Device Manager.



USB Modem ports are ACM devices and can be used as AT Command interface. To identify the corresponding COM port number, just right click on one of the two Telit USB Modem entries, select Properties, then Modem tab. The picture shows the Telit USB Modem properties. In this example Windows 10 system binds USB #17 with

COM9 port.



Configure the EVB with your module

Telit AT Controller (TATC)

Telit AT Controller (TATC) is a easy to use AT command terminal designed to easily control Telit modules.

Download the Telit AT Controller installation files from the following link: <https://www.telit.com/evkevb-drivers/> and save it on your desktop.

USB Drivers

- Telit_Modules_Linux_USB_Drivers_User_Guide_r5
- Telit_Windows_10_WHQL_Drivers_Installer_2.08.0002
- Telit_Windows_Desktop_Drivers_Installer_1.12.0003
- Telit_EVB_USB_Drivers

Tools

- Telit_AT_Controller_r3.4.11_XFP_4.0.5
- Telit_TMB_Setup_2.7.1
- Telit_Connection_Manager_Setup_1.5.0

Install TATC

Unzip the folder and run Setup_TATC_3.4.11_XFP_4.0.5.msi file. Upon successful software installation, you will see the following icons on your desktop:



Configure TACT

Double-click on the Telit AT Controller icon to open the application and then click on Settings button



and select Port Settings tab to setup the AT port parameters such as in the picture below:





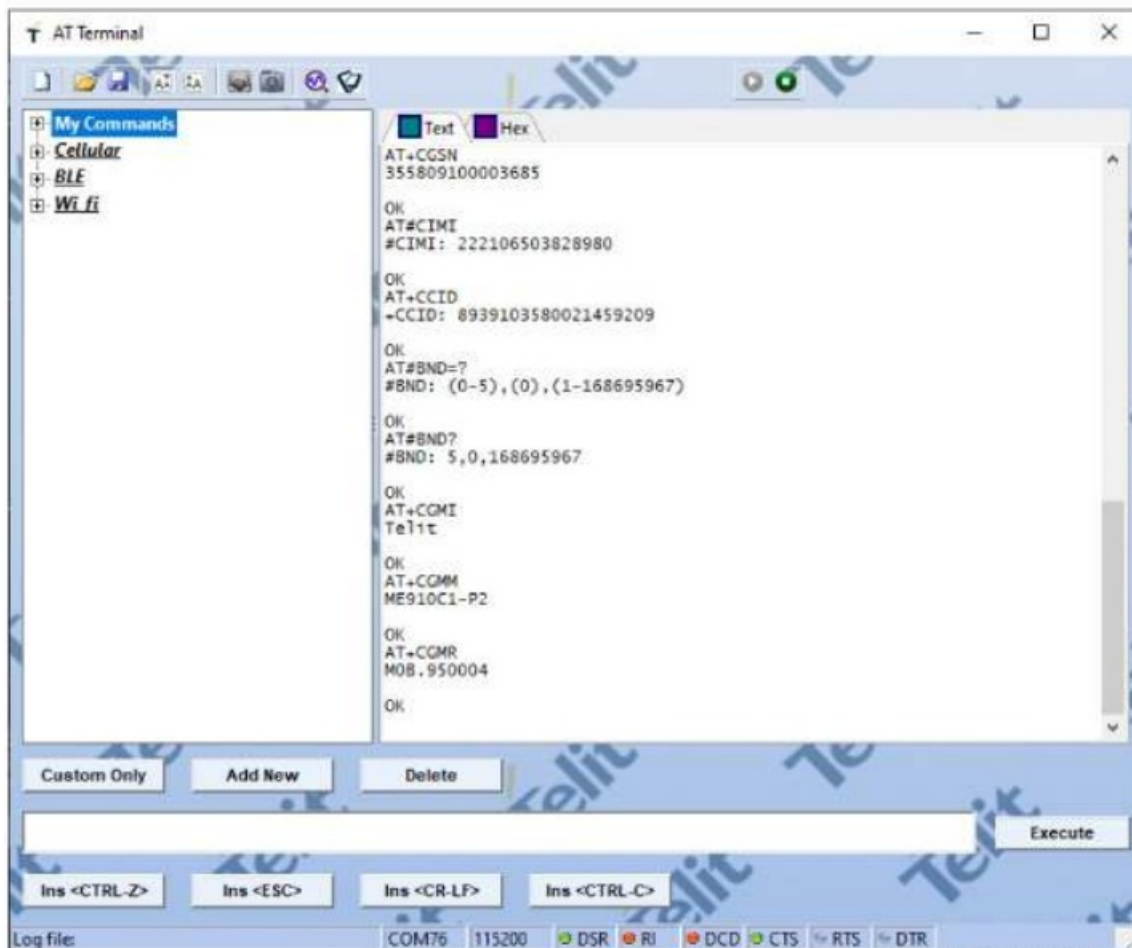
Click **OK** button. Upon successful configuration, click **Connect** button.



The module information such as MAC Address, Manufacturer name, Model Number, Firmware Release version will be displayed.

To start the AT Terminal window, click AT **Terminal** button.





You are now ready to send AT commands in the TATC input box and then click Execute button. Issue the following commands to verify firmware version and options.

- **AT#SWPKG**
- **AT#SWOPTIONS**
-

EVB IoT Device Development Kit – Quick Start Guide



Documents / Resources

	<p>Telit EVB IoT Device Development Kit [pdf] User Guide EVB IoT Device Development Kit, Device Development Kit, Development Kit, Kit</p>
---	--

References

-  [IoT AppZone Developer Resources | Telit](#)
-  [EVK and EVB Drivers | Telit](#)

Manuals+.