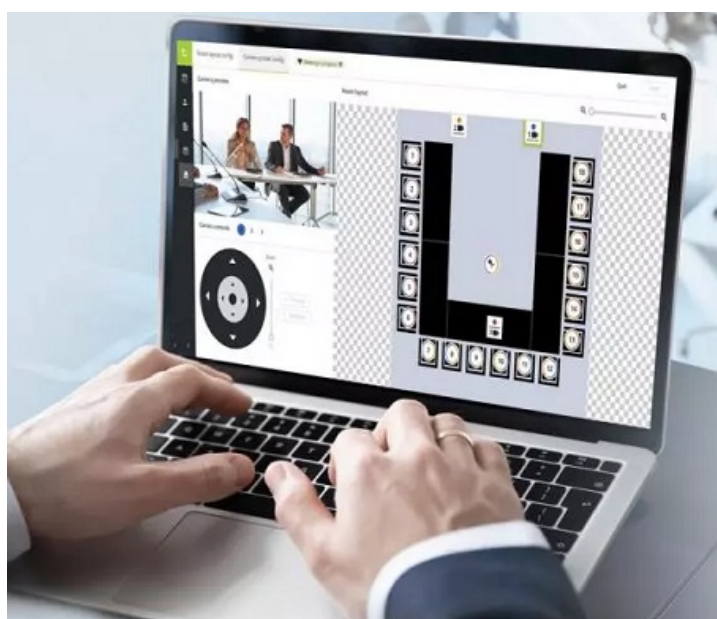


## Contents [ [hide](#) ]

- [1 Televic 2025-0507 CamConnect Processor](#)
- [2 Product Specifications](#)
- [3 Product Usage Instructions](#)
- [4 Overview](#)
- [5 INSTALLATION](#)
- [6 Frequently Asked Questions](#)
- [7 Documents / Resources](#)
  - [7.1 References](#)

# televic

## Televic 2025-0507 CamConnect Processor



## Product Specifications

- **Manufacturer:** Variscite LTD
- **Model:** D-Cerno AE
- **Maximum Microphones Supported:** 17
- **Minimum Distance Between Microphones:** 1m
- **Firmware Version:** 1.4.0 -17

## **Product Usage Instructions**

### **Discovering D-Cerno AE's IP:**

The Manufacturer's name of D-Cerno AE will be shown as Variscite LTD. Use a tool like Advanced IP Scanner to scan for the device's IP in your network. For example, D-Cerno AE's IP is 192.168.0.221.

D-Cerno AE as Technician and Mode Selection:

1. Enter D-Cerno AE's IP address in a web browser.
2. Access its configuration as a Technician.
3. Navigate to the [Discussion] section and select a preferred mode, such as [Hands free] mode.
4. Click on the mode until it turns green.

### **D-Cerno AE Key/Token for Camconnect Session:**

Navigate to [Settings] > [API Settings & Type] to generate the token for the Camconnect session.

### **D-Cerno AE Connection with Camconnect:**

1. Copy and paste the generated token in Camconnect's [API Access Key] field.
2. In Camconnect's web browser, enter D-Cerno AE's IP address.
3. Paste the API key as shown in the previous step.
4. Configure other settings like time to trigger and back to home as desired.
5. Hit Apply then toggle the Connect button to the right.

## **Overview**

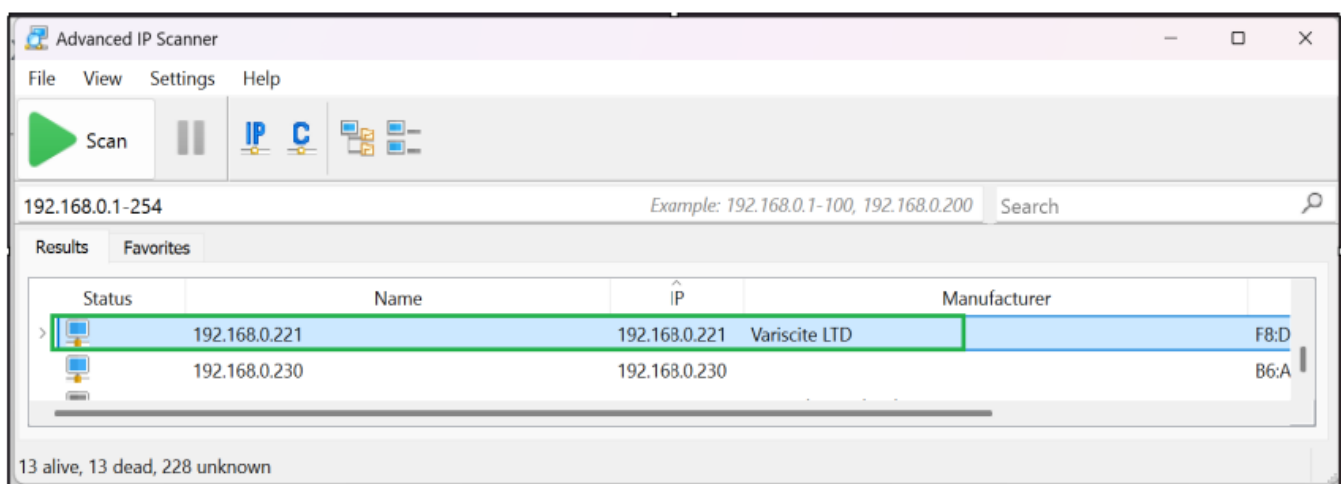
1. Discovering D-Cerno AE's IP.
2. D-Cerno AE as Technician and mode selection.
3. D-Cerno AE Key/Token for Camconnect session.
4. D-Cerno AE connection with Camconnect.
5. Camconnect and D-Cerno AE- Camera mapping and demo.
6. Others

## INSTALLATION

### Discovering D-Cerno AE's IP.

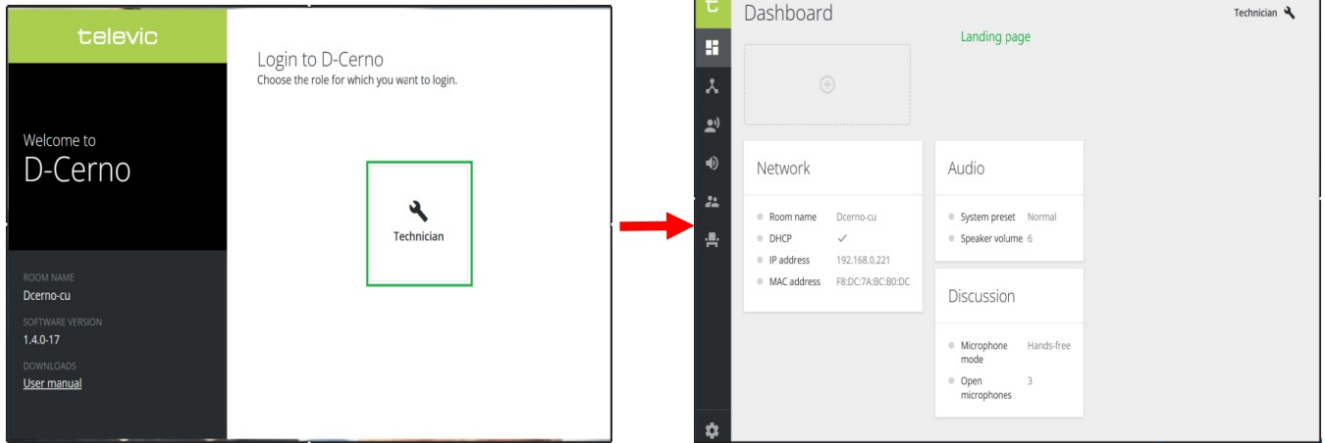
- The Manufacturer's name of D-Cerno AE will be shown as Variscite LTD.
- Use any tool to scan for this device's IP in your Network.

Ex. Advanced IP Scanner resolves. (Dcerno AE's IP = 192.168.0.221)

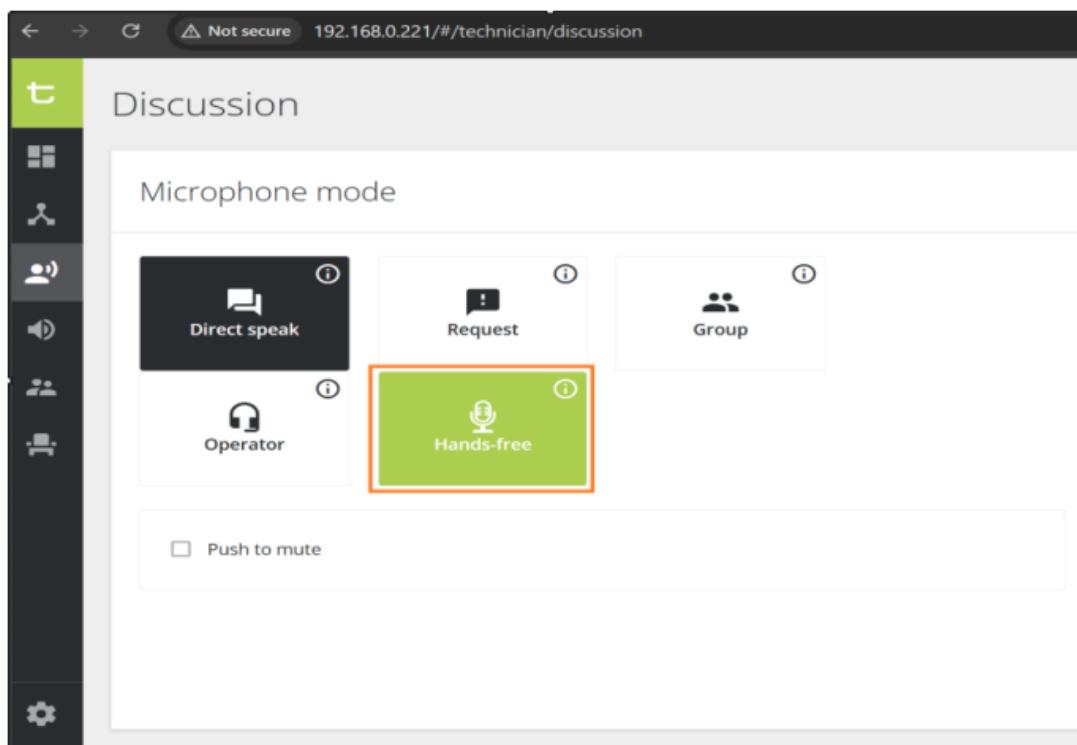


### D-Cerno AE as Technician and mode selection.

- Enter D-Cerno AE's IP address in a web browser.
- Access its configuration as Technician;

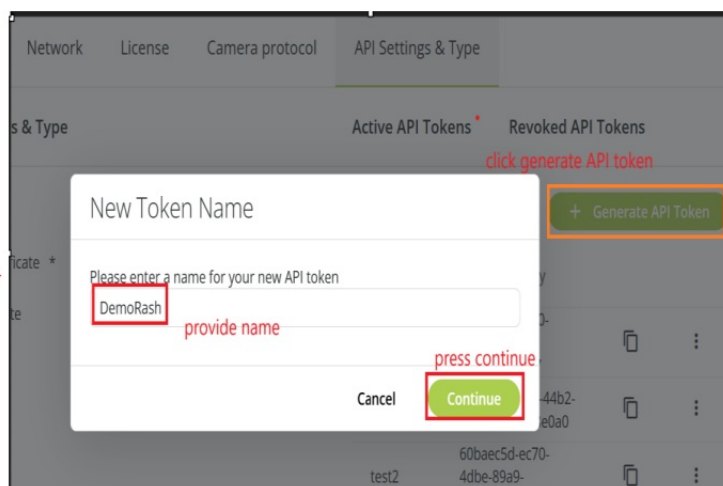
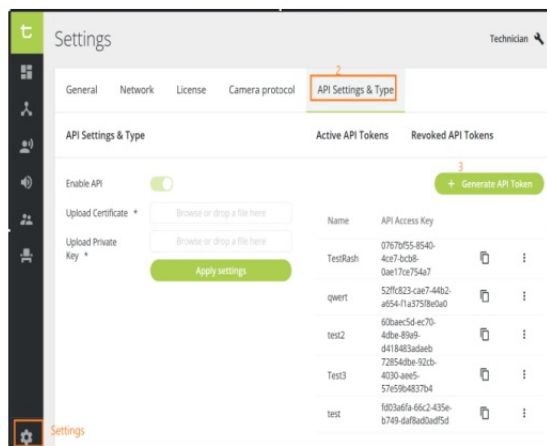


- Navigate to [Discussion] section and select a preferred mode.
- In this example, [Hands free] mode is shown.
- Click on mode until it turns green.



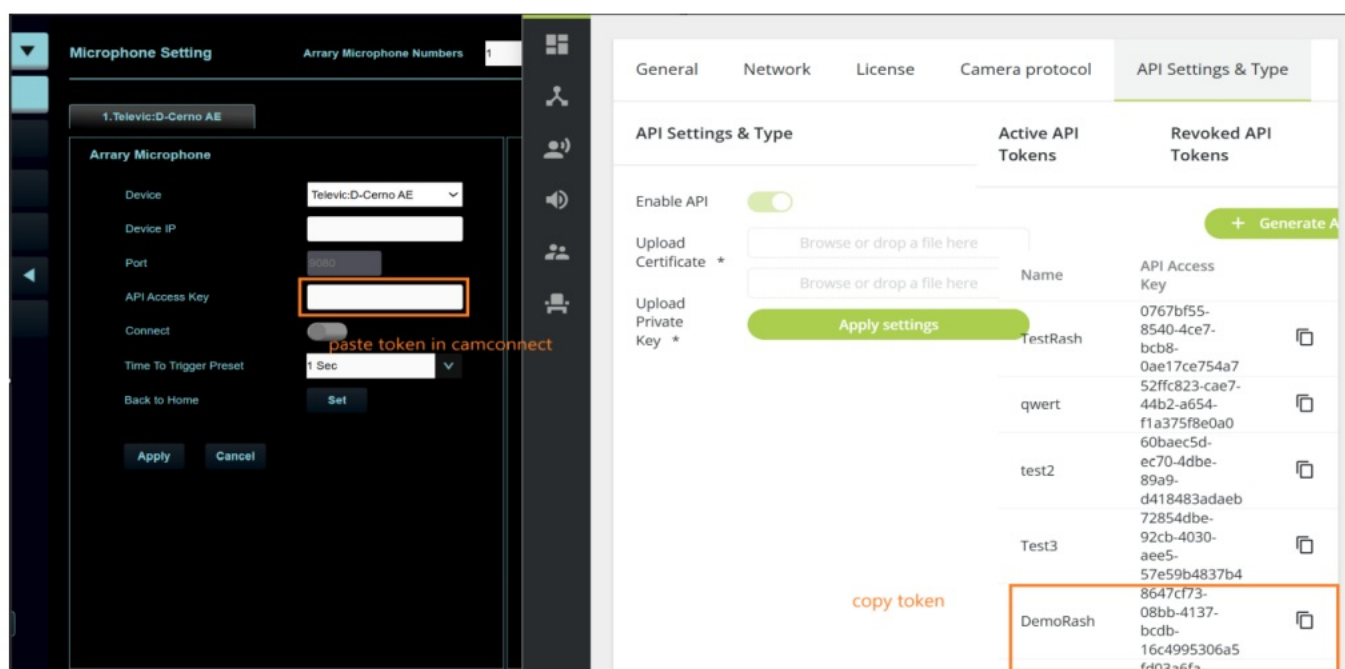
## D-Cerno AE Key/Token for Camconnect session

- Navigate to [settings] → [API Settings & Type].



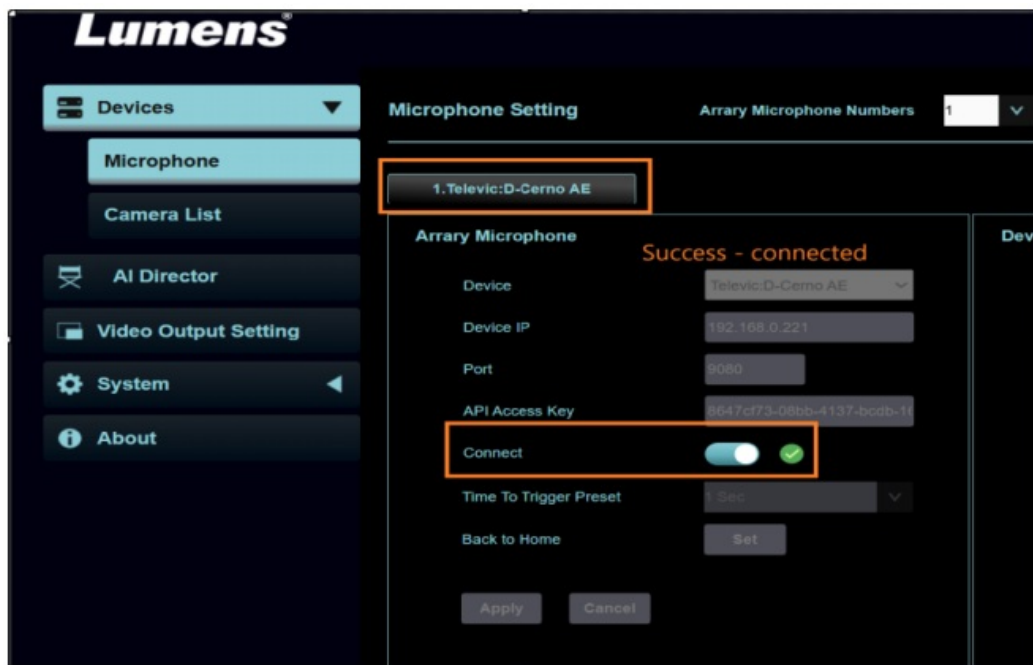
## D-Cerno AE connection with Camconnect

- Copy and paste the generated token in Camconnect's [API Access Key] field.



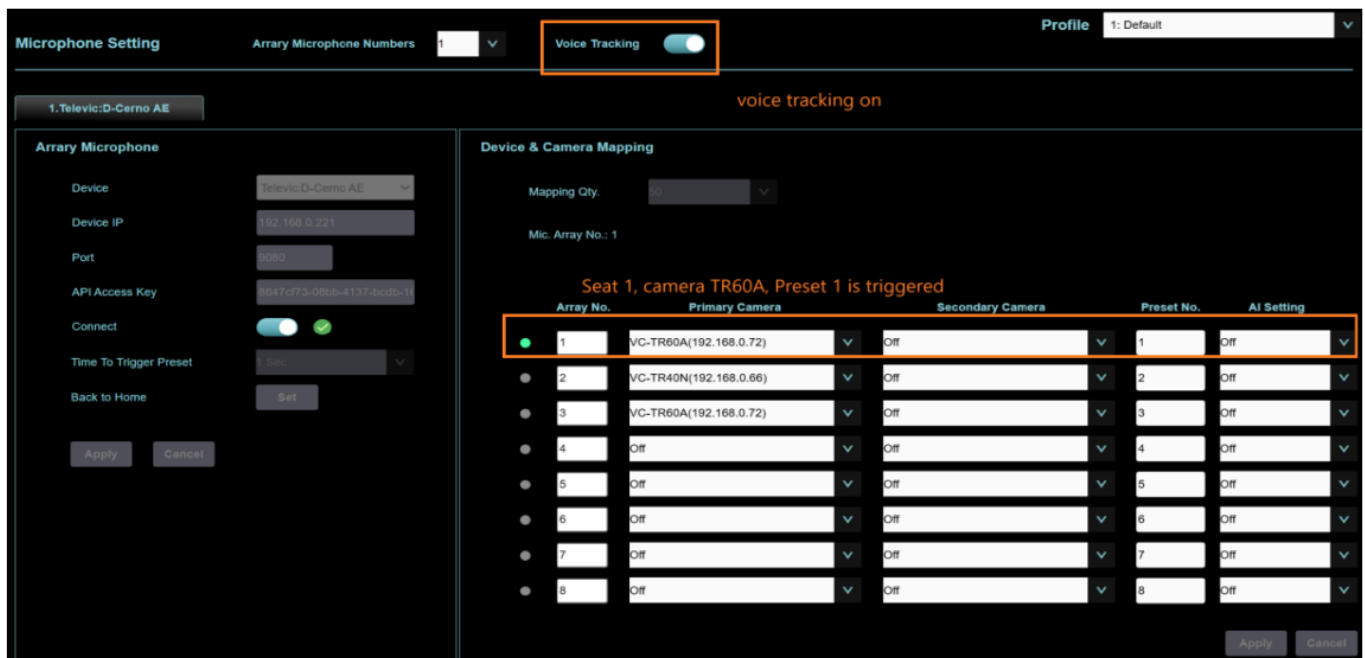
In Camconnect's web browser; (as shown below)

- Enter D-Cerno AE's IP address.
- Paste API key as shown in previous slide.
- Make other settings like; time to trigger and back to home as you wish.
- Hit Apply then toggle the Connect button to the right.



## Camconnect and D-Cerno AE- Camera mapping and demo.

- Map camera presets per D-Cerno C & D SL units/seats.
- In my example; 2 cameras and 3 seats are assigned in hands free mode.
- Below image shows; Seat 1 talker triggers camera TR60A preset 1:



## Others

- In hands free mode, a maximum of 17 microphones is supported.
- Do not place microphones less than 1m apart from each other.
- Update your D-Cerno AE, D & C SL to latest firmware (ex. 1.4.0 -17).

- Read carefully the D- Cerno AE`s installation manual, especially the sections; [installation], [Technician] and [operator and chairperson]. This ensures a seamless operation with Camconnect or have a certified Televic D-Cerno AE personel setup the room and then integrate with Camconnect.
- Contact Lumens for technical support if any of above guide is unclear.

Thank You!

[MyLumens.com](http://MyLumens.com)

Contact Lumens



Copyright © Lumens. All rights reserved.

## Frequently Asked Questions

**Q: How many microphones does the D-Cerno AE support in hands-free mode?**

**A:** The D-Cerno AE supports a maximum of 17 microphones in hands-free mode.


**Q: What is the minimum distance recommended between microphones?**

**A:** It is recommended not to place microphones less than 1m apart from each other.

**Q: How can I update the firmware of my D-Cerno AE?**

**A:** You can update your D-Cerno AE, D & C SL to the latest firmware version (e.g., 1.4.0-17) by following the instructions provided in the firmware update guide.

## Documents / Resources

|   |   |
|---|---|
|  | <a href="#">Televic 2025-0507 CamConnect Processor [pdf]</a> User Guide<br>2025-0507, 2025-0507 CamConnect Processor, CamConnect Processor, Processor |
|---|---|

## References

- [User Manual](#)

📄 2025-0507, 2025-0507 CamConnect Processor, CamConnect Processor, Processor,

📁 televic televic



## Leave a comment

Your email address will not be published. Required fields are marked \*

Comment \*

Name

Email

Website

☐ Save my name, email, and website in this browser for the next time I comment.

Post Comment

Search:



[Search](#)

[Manuals+](#) | [Upload](#) | [Deep Search](#) | [Privacy Policy](#) | [@manuals.plus](#) | [YouTube](#)

This website is an independent publication and is neither affiliated with nor endorsed by any of the trademark owners. The "Bluetooth®" word mark and logos are registered trademarks owned by Bluetooth SIG, Inc. The "Wi-Fi®" word mark and logos are registered trademarks owned by the Wi-Fi Alliance. Any use of these marks on this website does not imply any affiliation with or endorsement.