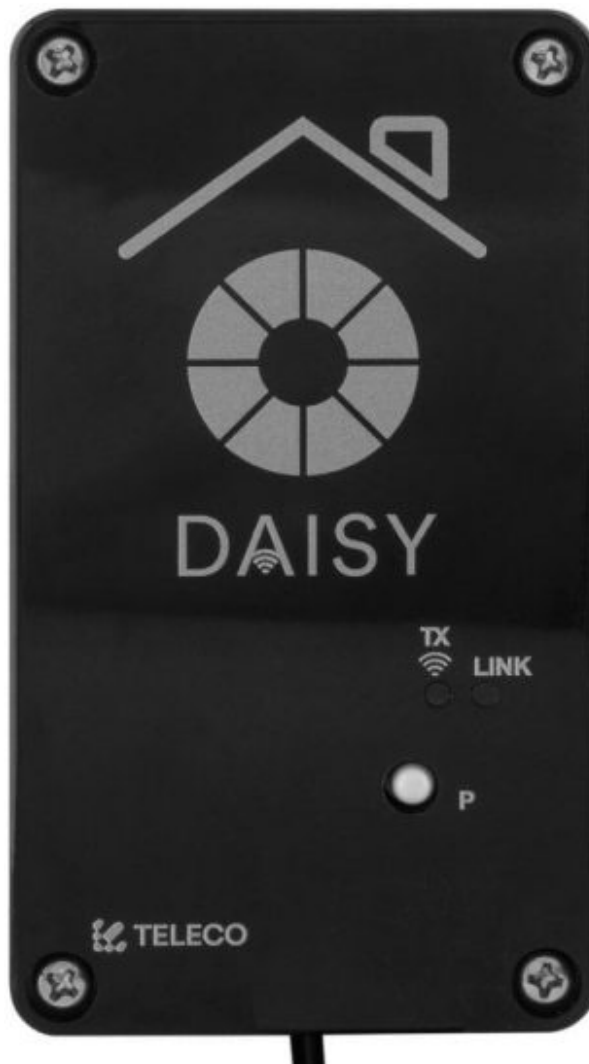




## TELECO TVDAY868A01 WiFi Interface App-Programmable Remotel Radio Control User Guide

[Home](#) » [TELECO](#) » TELECO TVDAY868A01 WiFi Interface App-Programmable Remotel Radio Control User Guide 

TELECO TVDAY868A01 WiFi Interface App-Programmable Remotel Radio Control User Guide



**Product code: TVDAYxxxA01** (Power supply included)

## Contents

- 1 Features
- 2 CHARACTERISTICS
  - 2.1 TECHNICAL SPECIFICATION
- 3 INSTALLATION
  - 3.1 REGISTRATION
  - 3.2 FIRST CONFIGURATION WITH ANDROID AND IOS DEVICES
- 4 MAIN MENU
  - 4.1 INFO PAGE
- 5 ROOM CREATION
  - 5.1 ADDING DEVICES TO A ROOM
  - 5.2 VIRTUAL COMMAND MEMORIZZATION USING A PREVIOUSLY MEMORIZED TRANSMITTER
  - 5.3 VIRTUAL COMMANDS MEMORIZATION WITH RECIEVER DEVICE
- 6 DEVICES END DAISY VIRTUAL COMMANDS
- 7 SCENARIOS CREATION
  - 7.1 SENDING SCENARIOS
  - 7.2 ADVANCED SCENARIOS PROGRAMMING ON TRANSMITTER
- 8 TIMERS
- 9 GENERAL SETTINGS
- 10 DAISY BOX SELECTION
- 11 ALEXA AND GOOGLE HOME
- 12 LED INDICATIONS
  - 12.1 ACCESS THE DIAGNOSTICS
  - 12.2 CONNECTION STATUS
  - 12.3 RESET WI-FI NETWORK CONFIGURATION
- 13 ACCESS FROM MULTIPLE SMARTPHONES
- 14 TROUBLESHOOTING
- 15 WARNING
- 16 Customer Support
- 17 Documents / Resources
- 18 Related Posts

## Features

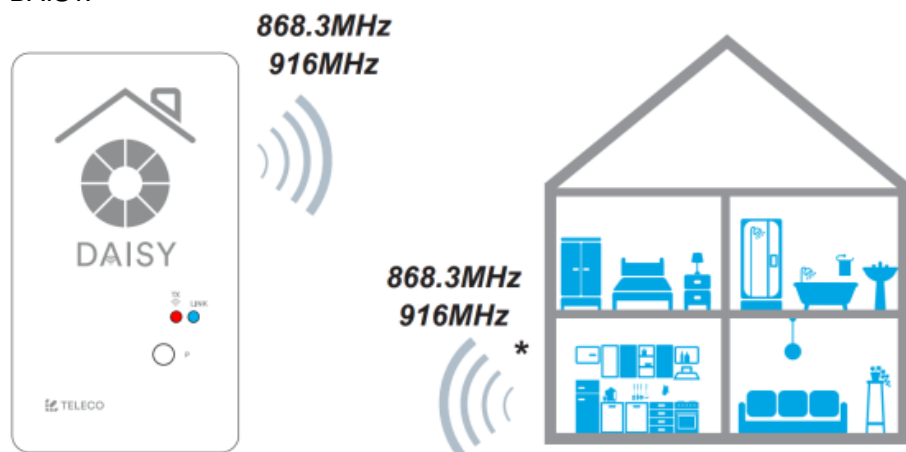
- Available in both 868.3MHz and 916MHz frequencies.
- Easy access via Wi-Fi or mobile network from any compatible device.
- Up to 50 programmable device commands.
- Possibility to create scenarios.
- Weekly timer to send commands at a specific date and time.

## DAISY APP

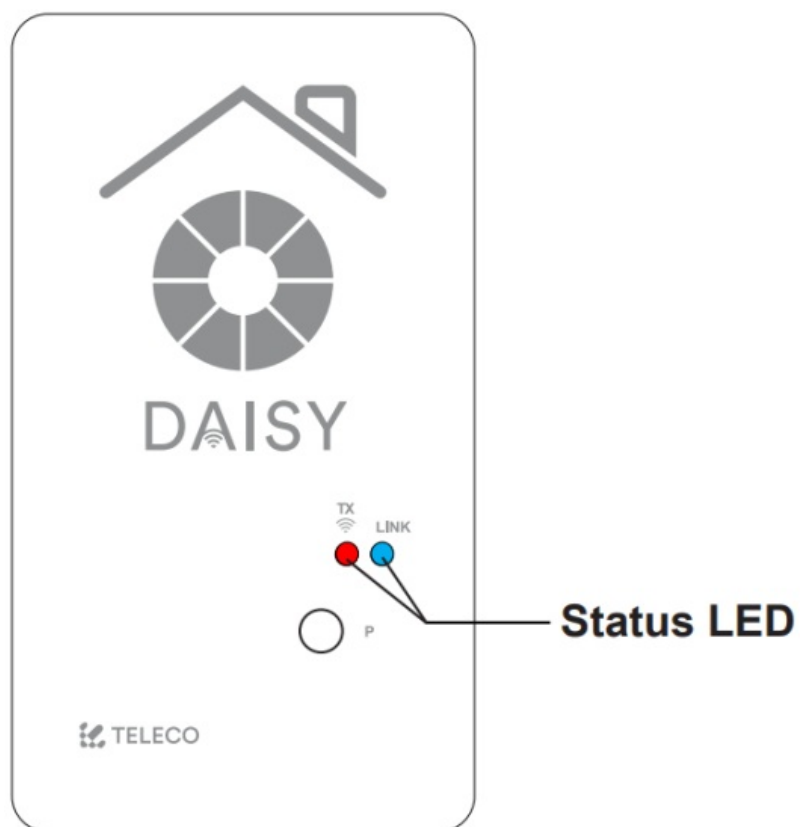


***Wi-Fi &  
cellular***

The Blue Series receivers are bidirectional. They can receive and execute commands and send the status back to DAISY.

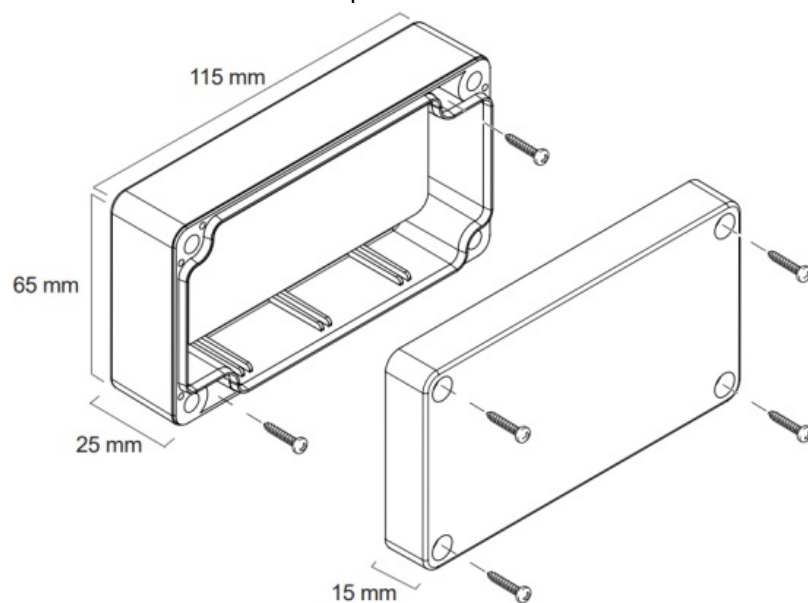


## CHARACTERISTICS



### Thermoplastic ABS

Not suitable for direct UV exposure.



The product guarantees IP54 rating if properly assembled.

### TECHNICAL SPECIFICATION

Power supply	<b>5 Vdc</b>
Transmission frequency	<b>868.3 MHz (TVDAY868A01) 916 MHz (TVDAY916A01)</b>
Frequency band	<b>2.4GHz</b>
Network Wi-Fi module	<b>802.11 b/g/n</b>

Operating temperature range	<b>-20°C ÷ +50°C</b>
Max. possible virtual transmitters	<b>50</b>
Degree of protection	<b>IP54</b>
Material of the box and its lid	<b>ABS Thermoplastic</b>

## INSTALLATION

Download the DAISY APP from the App Store or Google Play or using the IOS or Android QR Code. Check compatibility with your device first.




- QR Code iOS



#### • QR Code Android



 To connect Daisy to the WiFi network, the router must not have filter blocks set and the 8883 router's port not blocked. In case of connection issue, please contact your system administrator.

## REGISTRATION

The smartphone must be connected to an internet network. Follow the procedure here below described:

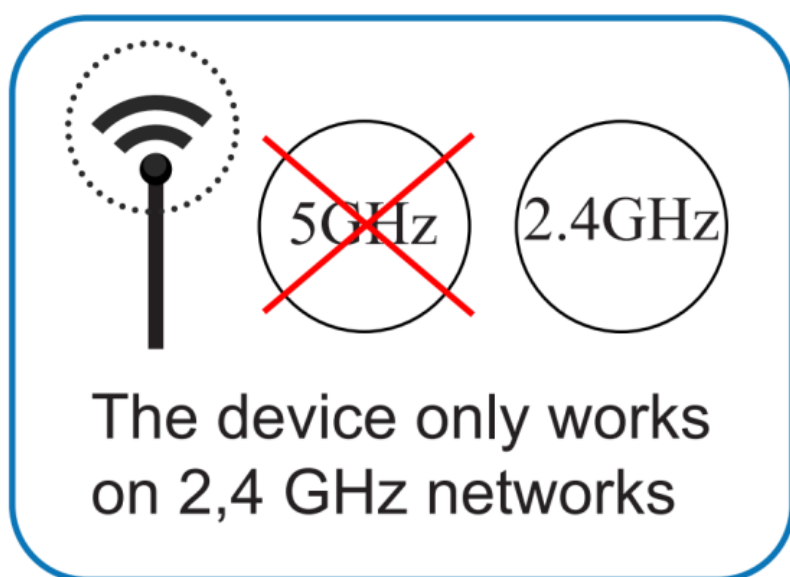
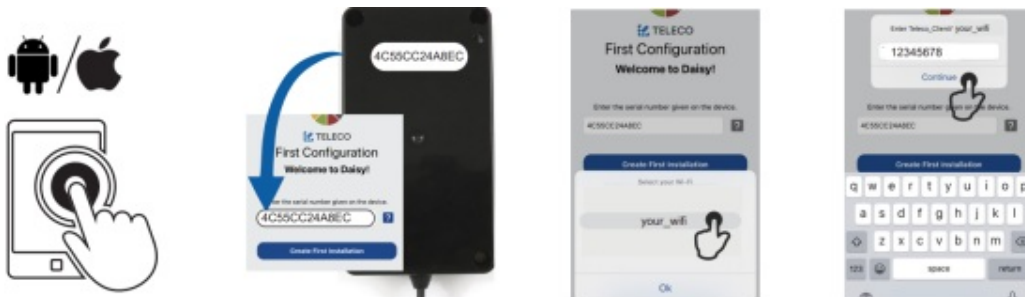


1. Tap on "Create new account".
2. . Fill in fields with the information required.
3. Once filled in tap on "Sign Up".
4. Check email to confirm registration.
5. "Log In" with User and PWD assigned.

## FIRST CONFIGURATION WITH ANDROID AND IOS DEVICES

**Mandatory: Android version 5.1 Lollipop otherwise iOS 12 or later.**

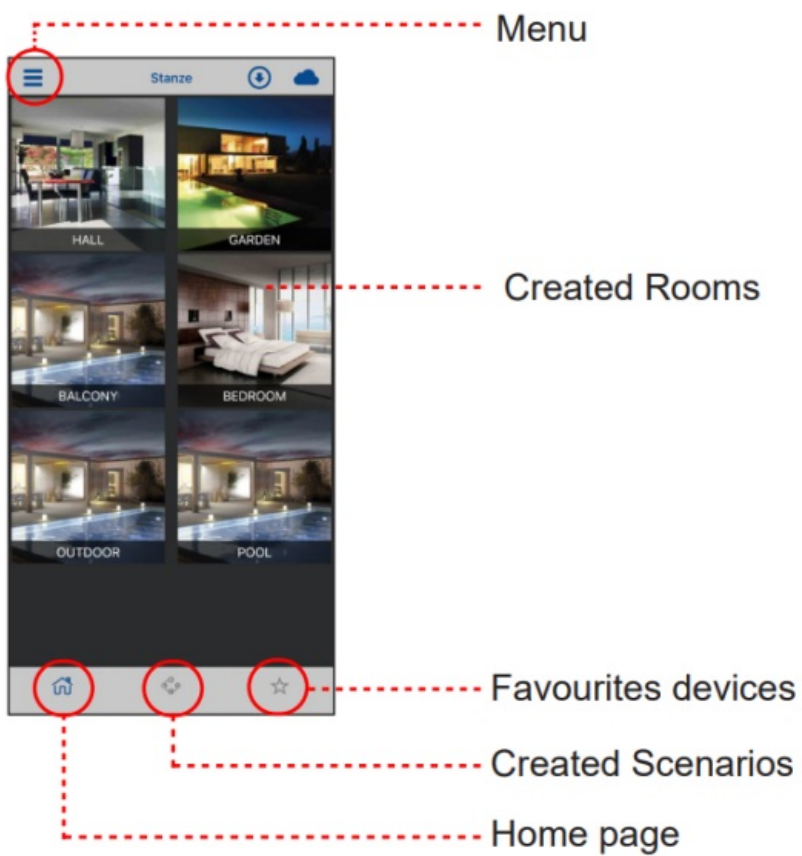
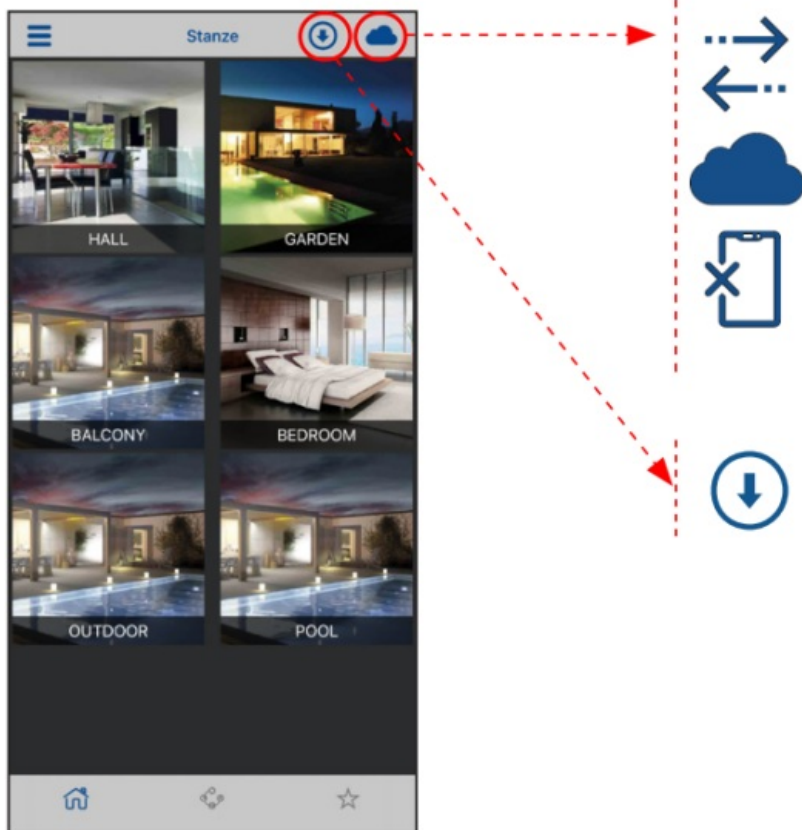
1. Run Daisy APP.
2. Fill in field with Code written on Daisy box label.
3. Select your WiFi network.
4. Enter Home Network's Password and tap "Continue"



**Warning: Verify that the option to connect to networks without Internet access is enabled in the phone.**

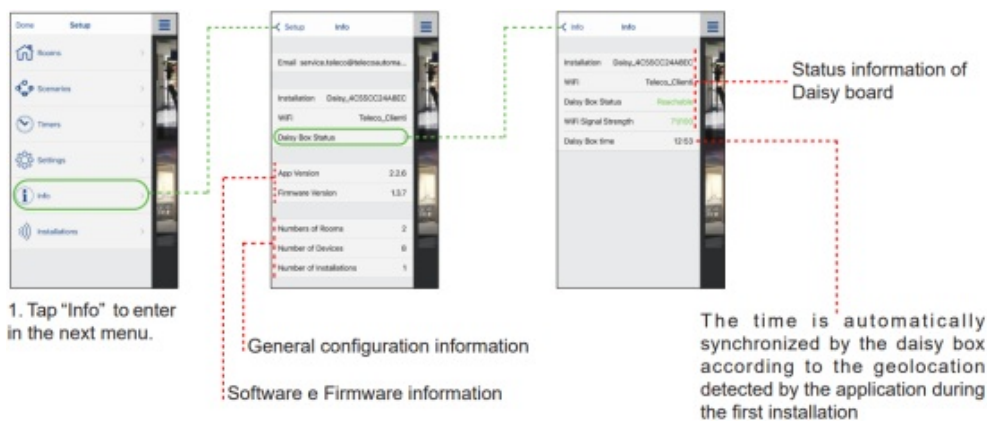
## MAIN MENU

- Direct connection through WiFi router.
- Cloud connection.
- No connection (Board not reachable).
- APP or Box update available.



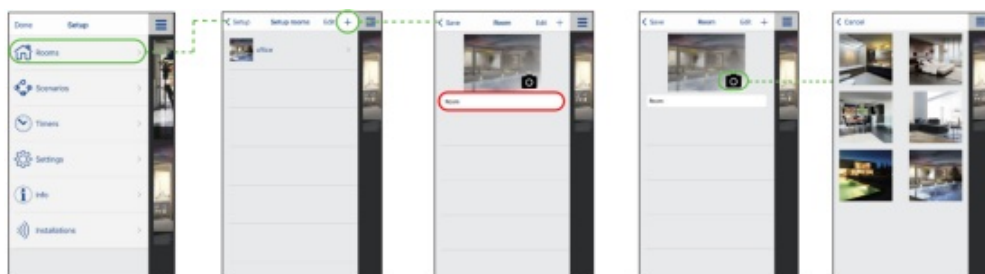
INFO PAGE





## ROOM CREATION

1. Create new rooms accessing the menu "Rooms" in Setup.
2. Tap "+" to add a room.
3. Type room's name.
4. Assign a picture (Select your room) or select a picture of your device gallery (**Upload picture**).

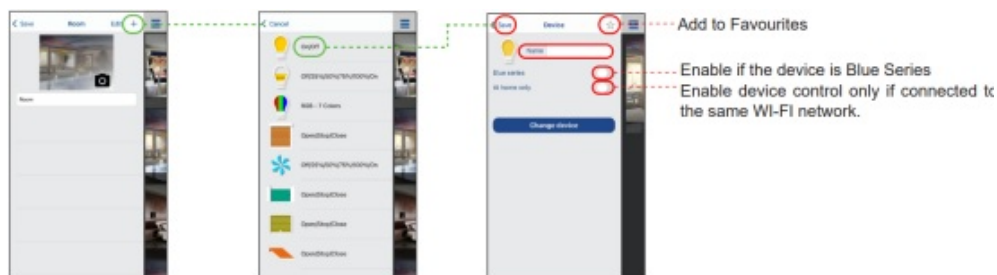


**NOTE:** Swipe a listed room left to delete it.

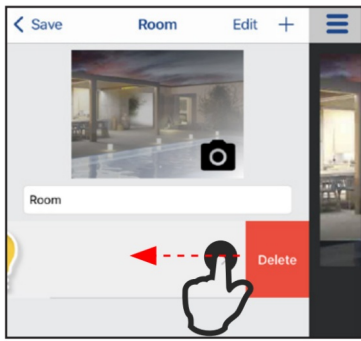


## ADDING DEVICES TO A ROOM

1. Tap "+" to add a device.
2. Select the type of device from the list.
3. Assign a "Name" and tap "Save".



**NOTE:** Swipe a listed device left to delete it.

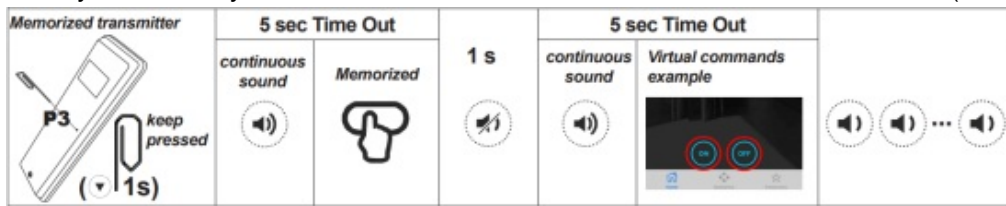


## VIRTUAL COMMAND MEMORIZZATION USING A PREVIOUSLY MEMORIZED TRANSMITTER

**Here following you can find an example procedure to associate a physical device with Daisy App virtual command. For the detailed procedure, refer to device manual.**


**Note:** The button P3 is located inside the transmitter. The device association takes place by pressing any of the virtual button in the page of the chosen device.

Press button P3 of the memorized standard transmitter and hold. The buzzer emits a continuous sound. Press a button relative to an already memorized code. The buzzer stops for 1 second and then starts the continuous sound again. Press one of the virtual buttons on the Daisy transmitter. Successful memorization and signaling is usually indicated by the intermittent sound of the buzzer or luminous feedback (see device manual).

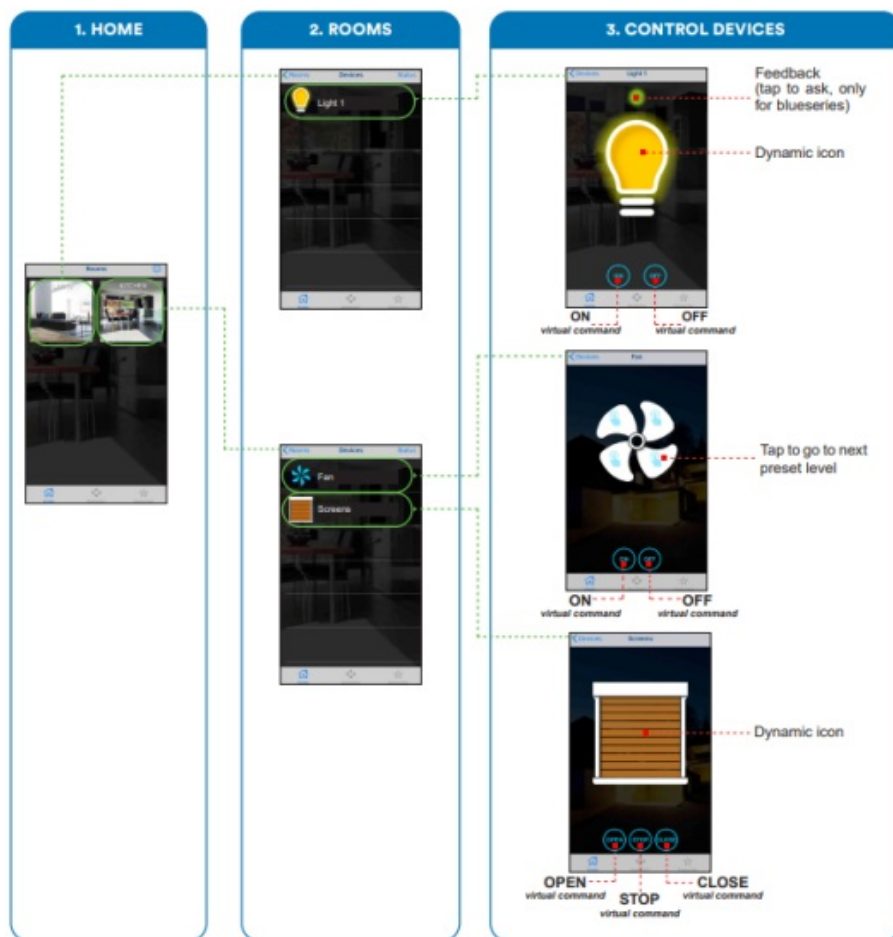


## VIRTUAL COMMANDS MEMORIZATION WITH RECIEVER DEVICE

For memorization procedure of Daisy App virtual command, please refer to receiver device manual.

In general, transmitter button in receiver device manual , represented by the symbol  , must be replaced with the tap on the Daisy App corresponding virtual command.

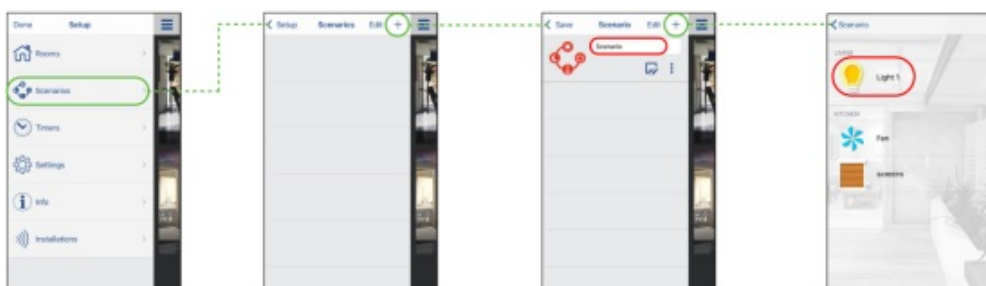
## DEVICES END DAISY VIRTUAL COMMANDS



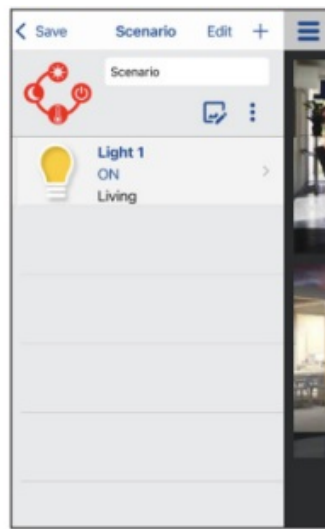
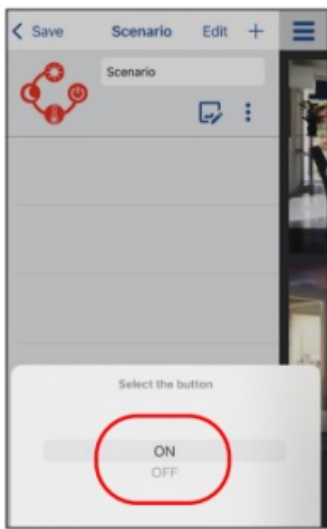
**NOTE:** Daisy virtual commands work only if they have been memorized first in receiving devices (4.2 or 4.3).

## SCENARIOS CREATION

1. Create new scenarios accessing the menu “Scenarios” in Setup.
2. Set a name and Tap “+” to add a device.
3. Select “Light 1” to add the first command.



4. . Chose the command behavior.
5. The first configured command for the scenario appears on the display.



**NOTA:** Swipe a listed scenario left to delete it.

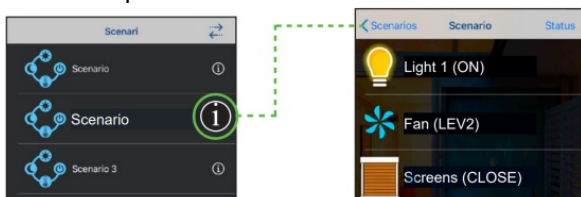


## SENDING SCENARIOS

1. Tap (Scenario icon) to enter in the next menu.
2. Tap the chosen scenario to send.
3. Confirm with (OK) to send scenario.



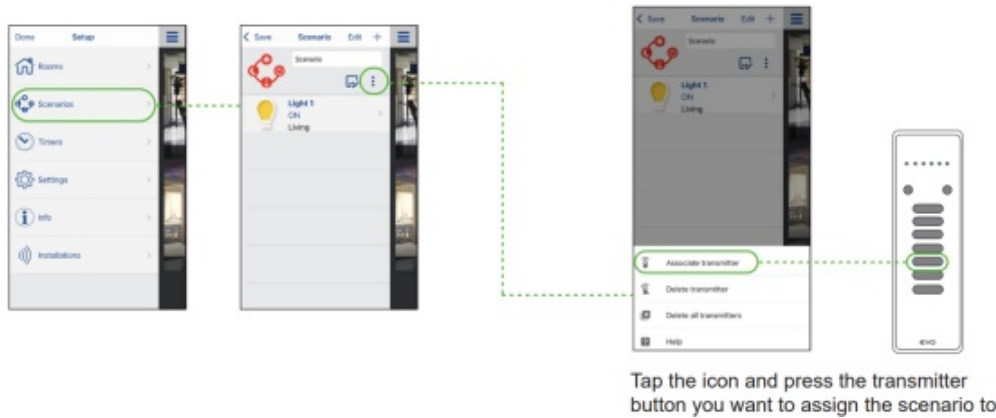
**NOTE:** Tap “i” icon to view the scenario commands list.



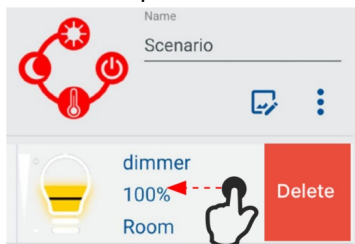
## ADVANCED SCENARIOS PROGRAMMING ON TRANSMITTER

Once a scenario has been created, the recall function can be assigned to a button on the transmitter. **To start the**

scenario, the transmitter must be near the daisy box.

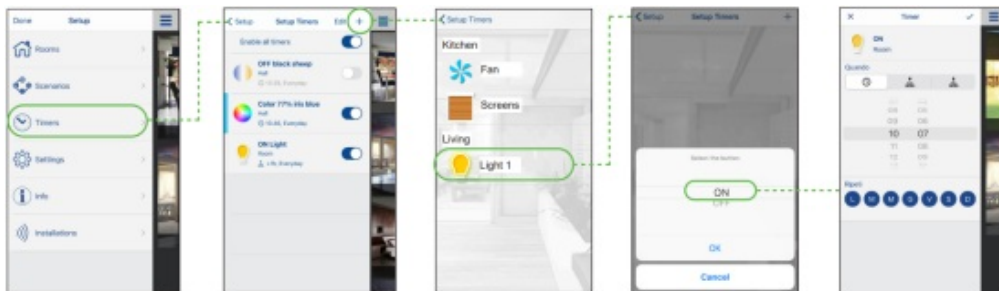


**NOTE:** Swipe to left to delete a command.



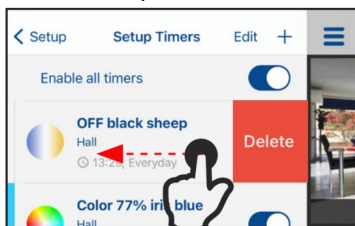
## TIMERS

1. Create new timer accessing the menu “Timers” in Setup.
2. Tap “+” to add a timer.
3. Tap “Light 1” to add a timer to that device.
4. Select the command to send.
5. Select from the highlighted proposals, custom time, sunrise or sunset (+1, +2, -1, -2) and the days to exclude.

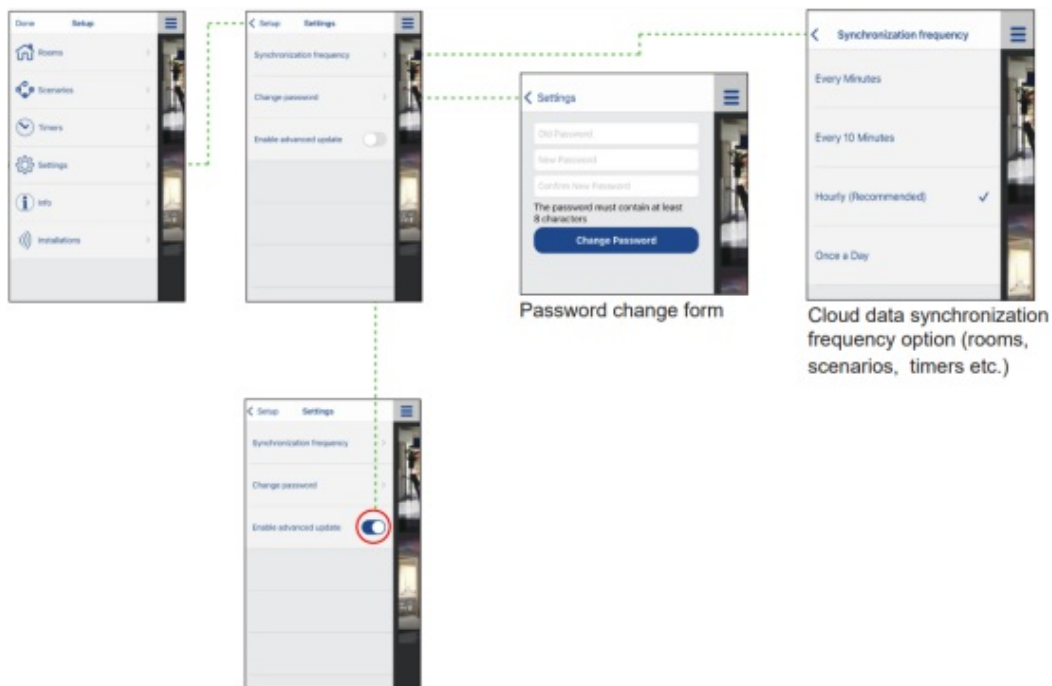


**NOTE:** Timers use the time set in the daisy box see par. 3.2

**NOTE:** Swipe a listed timer left to delete it.

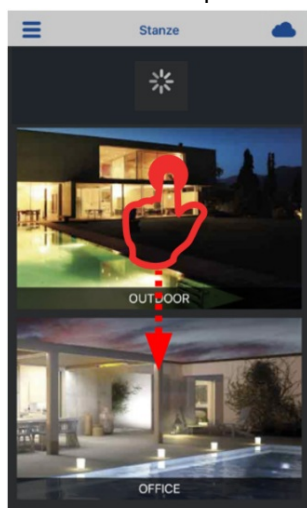


## GENERAL SETTINGS



**WARNING:** Enable advanced update only upon request from customer service.

**NOTE:** You can perform a manual sync by swiping down on the home page.



## DAISY BOX SELECTION

1. Tap "Installations" to enter in the next menu.
2. Chose from the list the desired daisy box. To add a new box instead press "+".
3. Tap "Select" to switch the box.



**NOTE:** The unselected Daisy boxes in the app remains active, which means for example that timers set will continue to work.

## ALEXA AND GOOGLE HOME

Scan the QR code according to the device you want to pair and follow the instructions shown in the video.

 	 
<b>Devices manageable with Alexa</b>	<b>Devices manageable with Google Home</b>
Light On Off	Light On Off
Dimmer Light On Off, brightness (level)	Dimmer Light On Off, brightness (only default levels)
Dimmer slider Light On Off, brightness	Dimmer slider Light On Off, brightness
Scenario Scene ("Start scene")	Heater On, Off, Fan speed (level 1, level 2, level 3, level 4)
RGB On Off, Color wheel	4 channels heater On, Off, Fan speed (level 1, level 2, level 3, level 4)
Wheel RGB On Off, color setting, brightness	Fan On Off, Fan speed (level 1, level 2, level 3, level 4)
White wheel On Off, Temperature color setting, brightness	RGB On Off, color setting

2-button switch On Off (no status)	RGB On Off wheel, color setting, brightness
Heater On Off, Percentage, Thermostat	White On Off wheel, color setting, brightness
Fan On Off, Percentage	Scenario scene ("Start scene")
	2-button switch On Off (no status)
	Roller shutter Open Close
	Gate Open Close
	Garage Open Close
	Awning Open Close
	Screen Open Close
	Pergola Slats Open Close

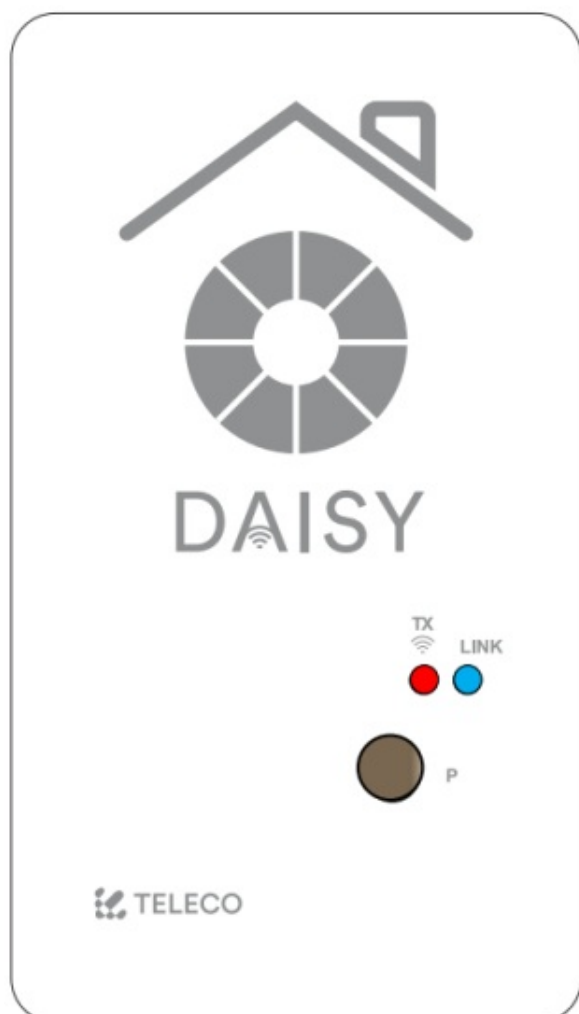
**NOTE:** when you update the devices on the Daisy app, to update the Alexa app use the "Find scenarios" button.





**NOTE:** when you update the devices on the Daisy app, pronounce this phrase to update the assistant app: **"Ok Google, synchronize my devices"**



Voice command examples with Alexa	Voice command examples with Google Home
Alexa, set the heater to 50%	“Ehi Google”, open the pergola
Alexa, turn on the heater	“Ehi Google”, is the pergola open?
Alexa, heat the room	“Ehi Google”, turn on /off the light
Alexa, refresh the room	“Ehi Google”, set the brightness at 50 %
Alexa, turn on the fan	“Ehi Google”, lower, higher the brightness (+- 15 %)
Alexa, lower the fan	“Ehi Google”, is the living room light on?

## LED INDICATIONS



Status	LED indications
Wi-Fi settings not configured	
Connecting to the WI-FI	
Connecting to the CLOUD'S services	
Connected	

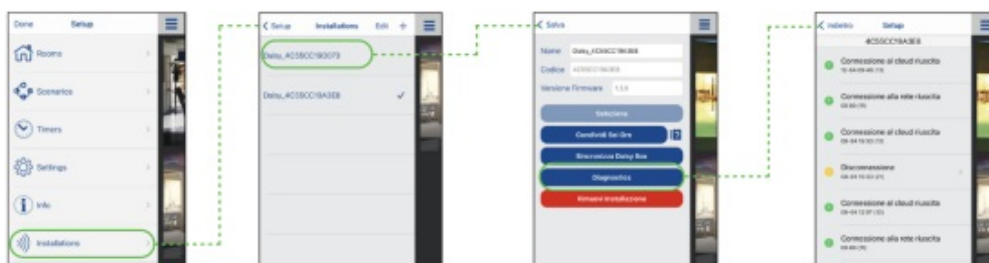
The transmission of a command to the devices is signaled by a flashing of the red LED.

## ACCESS THE DIAGNOSTICS

Daisy box is equipped with a diagnostic system for checking the operating status.

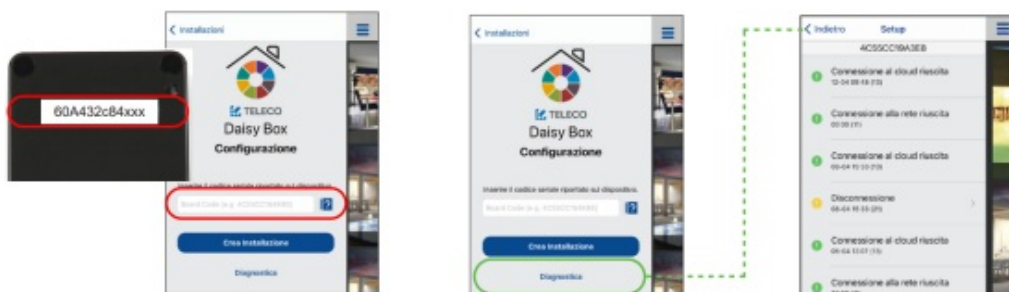
### A- Access to diagnostics in normal operation

1. Tap on installations.
2. Tap on the box that needs diagnostics.
3. Tap on diagnostics.
4. Diagnostics Log.



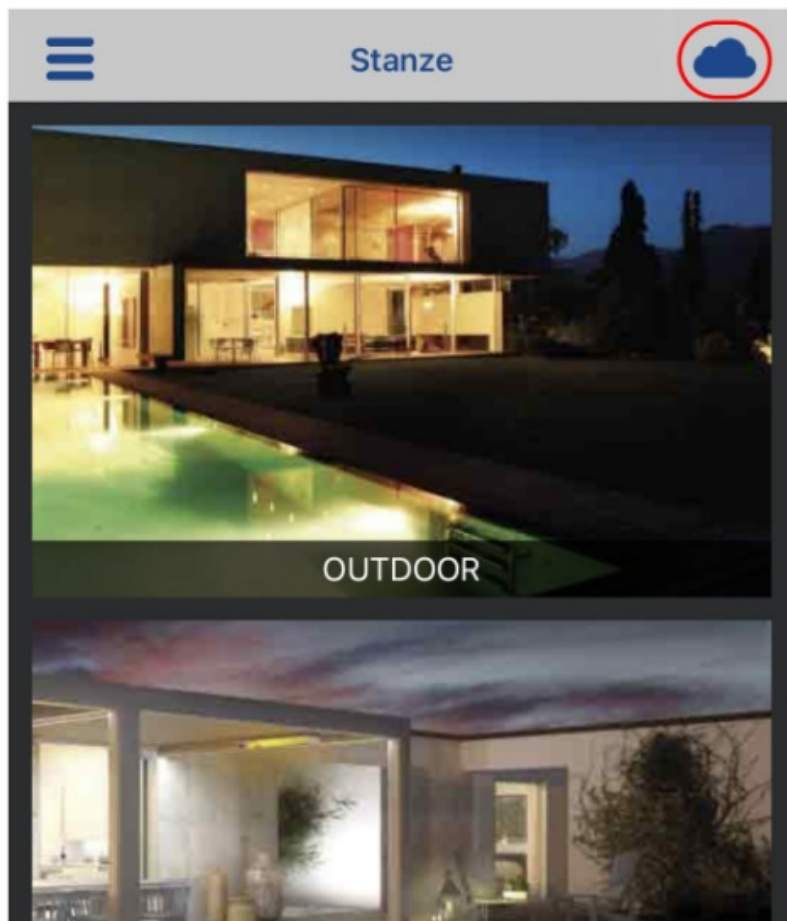
### B – Checking the diagnostics of a box that has not yet been installed (blue LED flashing)

1. Fill in field with the code written on the Daisy box label.
2. Tap on diagnostic.
3. Diagnostic Log.

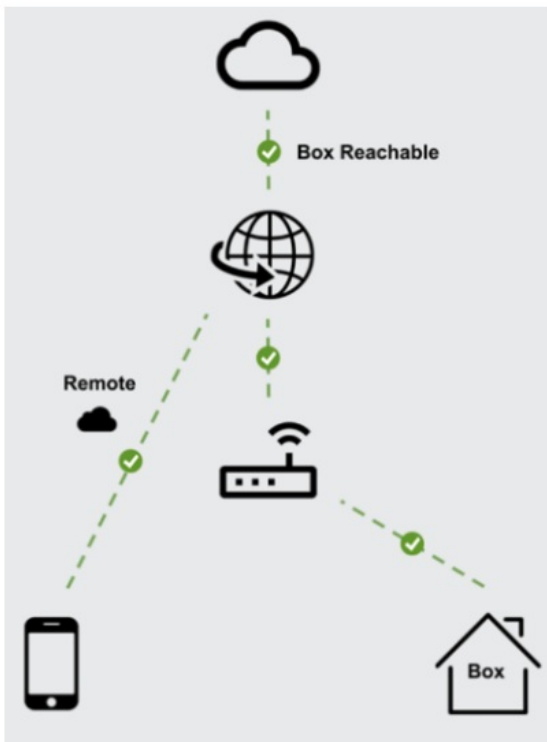


## CONNECTION STATUS

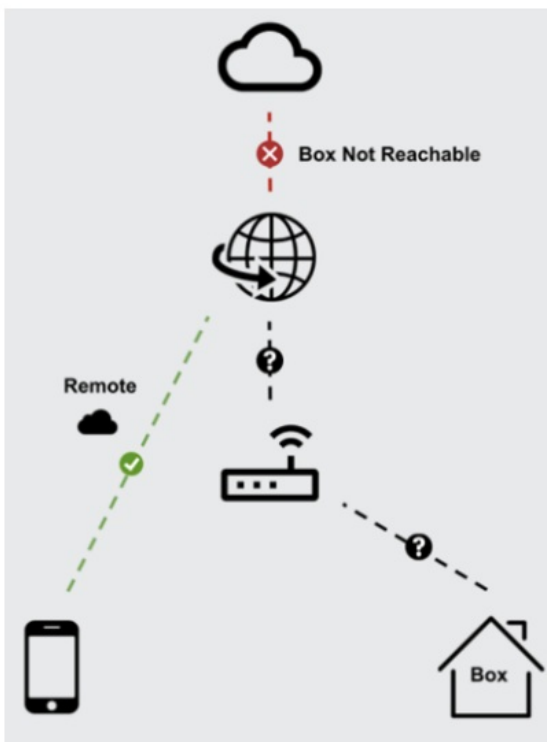
↔ ☁ 📶 To check the connection status, press one of the 3 symbols which are located at the top right of the homepage. A diagram will appear indicating box connection status and, eventually, the errors presence.



- No connection problems.



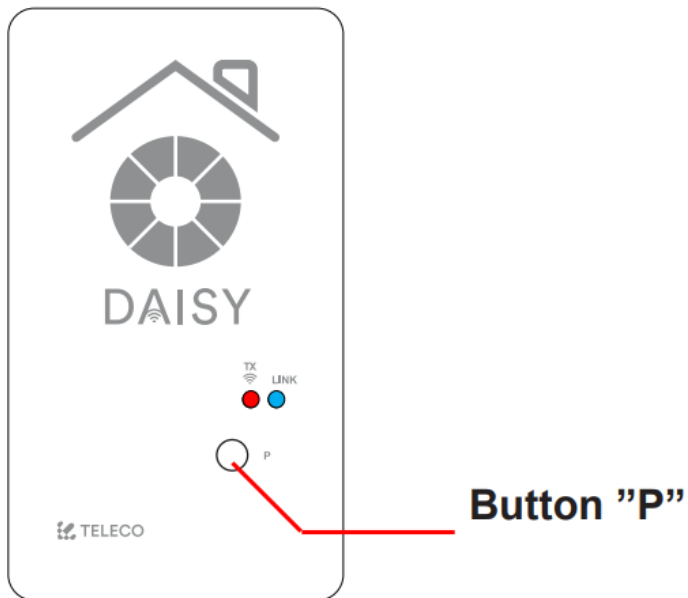
- An error was encountered.



## RESET WI-FI NETWORK CONFIGURATION

If the network settings change, daisy box will no longer be reachable and it will therefore be necessary to delete the current wifi configuration from the daisy box using the procedure indicated below, then repeat the procedure for the first registration indicated in paragraph 2.2.

**Button "P"**: Delete the current Wi-Fi configuration (transmitters, rooms, scenarios etc. will not be deleted).



Press and hold the **(P)** button and power up the Daisy box. The two leds will start flashing alternately, blue and red, at a rate of 0.5 seconds. When the flashing status changes, both blue and red will flash together, you can release the (P) button. Once the cancellation has been completed, only the blue LED will flash with a frequency of 0.5 seconds.



## ACCESS FROM MULTIPLE SMARTPHONES

Multiple smartphones and / or tablets can be connected to the daisy box by simply logging in with the same account. All devices, rooms, scenarios etc. will be automatically downloaded from the cloud on the new smartphone as well.

## TROUBLESHOOTING

Problem	LED signaling	Solution
During the first configuration, the procedure cannot be completed	The <b>blue</b> and <b>red</b> LEDs continue to flash alternately	<ol style="list-style-type: none"> <li>1. Wait about one minute until the LEDs stop blinking even if the “installation failed” message appears.</li> <li>2. Check that the router has no blocking filters set.</li> <li>3. Check you entered data correctly and repeat the first configuration procedure.</li> </ol>
During normal operating mode the daisy box disconnects from the WiFi network	The <b>blue</b> and <b>red</b> LEDs continue to flash alternately	Verify router is powered on and connected to Internet. Try also disconnecting and reconnecting the power cord.
During normal operating mode the daisy box cannot connect to internet	Only the <b>blue</b> LED flashes	Check router internet connection. Try also disconnecting and reconnecting the power cord.
Only virtual commands work while scenarios and timers don't	Only the <b>blue</b> LED flashes quickly 0,1s	Check the internet connection of the router.

## WARNING

**IMPORTANT! READ CAREFULLY THESE INSTRUCTIONS BEFORE INSTALLING AND COMMISSIONING THE PRODUCT. SAVE THESE INSTRUCTIONS FOR FUTURE REFERENCE.**

**PRODUCT INSTALLATION:** The product at issue must be installed, commissioned and maintained only by licensed and authorised people, respecting the laws concerning the electrical installations. The manufacturer is not responsible for any damage due to wrong installation or improper use.

**SAFETY INFORMATION:** The radio signal reception of the device could be disturbed by the presence of electrical disturbances being transmitted by other appliances working on the same frequency or if the product is somehow shielded by metal parts.

The manufacturer, Teleco Automation s.r.l., declares that the type of radio equipment is compliant with Directive 2014/53/ EU. The full text of the EU compliance declaration is available at the following Internet address:  
[www.telecoautomation.com/ce](http://www.telecoautomation.com/ce)

**In the view of a constant development of their products, the manufacturer reserves the right for changing technical data and features without prior notice.**



**INFORMATION TO USERS** under art. 14 of the 2012/19/EU DIRECTIVE OF THE EUROPEAN PARLIAMENT AND COUNCIL of 4 July 2012 on waste electrical and electronic equipment (WEEE). The crossed bin symbol on the equipment, or its packaging, indicates that the product must be collected separately from other waste at the end of its useful life and not with mixed urban waste. Please contact your municipality, or local authority, for all information regarding the waste sorting systems available in the area. The retailer is obliged to collect the old equipment free-of-charge when the customer buys a new equivalent equipment. This is to encourage correct recycling/ disposal. Appropriate waste sorting for the subsequent recycling, treatment and disposal in an environmentally sound way of the disused equipment avoids

negative effects on the environment or human health and favours the re-use or recycling of the equipment's materials.

**According to FCC regulations, the device is designed as a mobile station.”**

“This device complies with part 15 of the FCC Rules.

Operation is subject to the following two conditions:

1. this device may not cause harmful interference, and
2. this device must accept any interference received, including interference that may cause undesired operation.

“During its normal function, keep a distance of at least 5 mm from the radiant element.”

Any changes or modifications not expressly approved by the party responsible for compliance could void the User's authority to operate the equipment”

**According to ISED regulations, the device is designed as a mobile station.”**

“This device complies with Industry Canada's licence-exempt RSSs. Operation is subject to the following two conditions:

1. This device may not cause interference; and
2. This device must accept any interference, including interference that may cause undesired operation of the device.”

“During its normal function, keep a distance of at least 5 mm from the radiant element.”

## **Customer Support**

**TELECO AUTOMATION S.R.L.**

ITALY

**Tel.** +39.0438.388511

[info@telecoautomation.com](mailto:info@telecoautomation.com)

**TELECO AUTOMATION BENELUX SPRL**

BELGIUM

**Tel.** +32.67561967

[info@telecoautomation.be](mailto:info@telecoautomation.be)

**TELECO AUTOMATION FRANCE**  
FRANCE  
**Tel.** +33.(0)472.145080  
[info@telecofrance.com](mailto:info@telecofrance.com)

**TELECO AUTOMATION OCEANIA PTY LTD**  
AUSTRALIA  
**Tel.** +61.(07)5502.7801  
[info@telecoautomation.com.au](mailto:info@telecoautomation.com.au)

**TELECO AUTOMATION GMBH**  
GERMANY  
**Tel.** +49.(0)8122.9563024  
[info.de@telecoautomation.com](mailto:info.de@telecoautomation.com)

**TELECO AUTOMATION IBÉRICA S.L.**  
SPAIN  
**Tel.** +34.966.16.82.24  
[jv.lopez@telecoautomation.com](mailto:jv.lopez@telecoautomation.com)



## Documents / Resources

	<p><a href="#">TELECO TVDAY868A01 WiFi Interface App-Programmable Remotel Radio Control</a> [pdf] User Guide</p> <p>TVDAY916, P59TVDAY916, TVDAY868A01 WiFi Interface App-Programmable Remotel Radio Control, TVDAY868A01, WiFi Interface App-Programmable Remotel Radio Control, TVDAYxxx A01 Series</p>
---	---