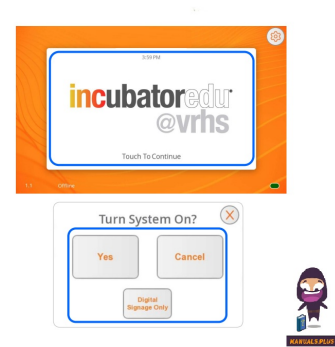


**TEKVOX**  
Drop-in AV®  
**VRHS**  
**Instructor**  
**Operation**  
**Guide**



## TEKVOX VRHS Instructor Operation Guide User Guide

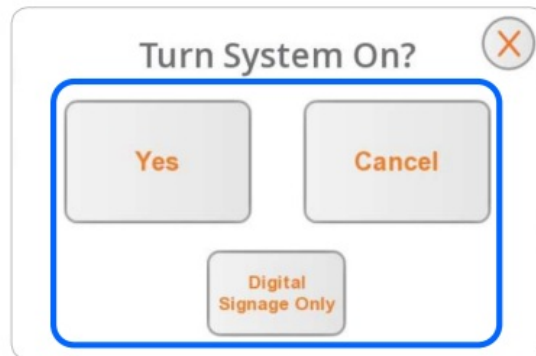
[Home](#) » [TEKVOX](#) » TEKVOX VRHS Instructor Operation Guide User Guide 

### Contents

- [1 TEKVOX VRHS Instructor Operation Guide](#)
- [2 Specifications](#)
- [3 Instruction](#)
- [4 Turning System On](#)
- [5 Selecting a Source](#)
- [6 Volume Controls](#)
- [7 Display Controls](#)
- [8 Send to Student Pods](#)
- [9 Camera Controls](#)
- [10 Requesting Help](#)
- [11 Turning System Off](#)
- [12 FAQs](#)
- [13 Documents / Resources](#)
  - [13.1 References](#)
- [14 Related Posts](#)

**TEKVOX**  
Drop-in AV®

**TEKVOX VRHS Instructor Operation Guide**



## Specifications

- Product Name: VRHS Instructor Operation Guide
- Features: Display controls, volume controls, camera controls, source selection, help options
- Compatibility: Designed for VRHS systems

## Instruction

### Turning System On



#### **Step 1: Wake Screen (Optional)**

If screen is dark, touch to wake

#### **Step 2: Open System On Menu**

Touch anywhere on screen

#### **Step 3: Select Option**

##### **Turn System On**

Press "Yes"


##### **Turn Digital Signage On**

Press "Digital Signage Only"

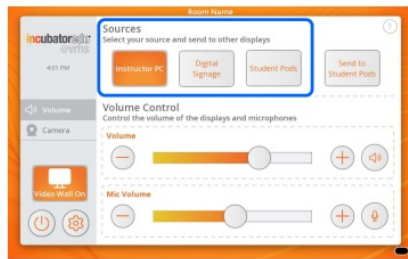
##### **Keep System Off (Cancel)**

Press "Cancel"

**OR**

Press 

## Selecting a Source



## Select a Source

Press a source's name to select it

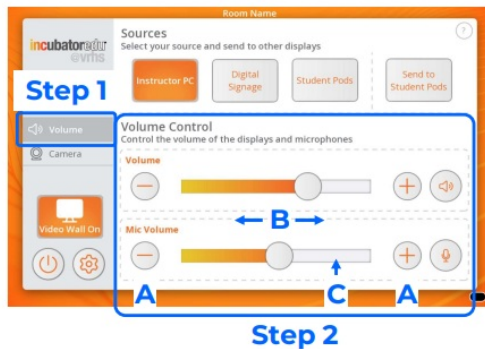
**OR**

Press "Student Pods" then press a pod's name to select it

*The selected source will be shown on the main video wall*



## Volume Controls



*\* **Volume** controls the volume of the selected source*

***Mic Volume** controls the volume of the room's microphones*

## Step 1: Open Volume Menu

Press "Volume" tab on left

## Step 2: Choose Operation

### Adjust Audio Volume\*

A: Press or

**OR**

B: Drag slider to desired volume

**OR**

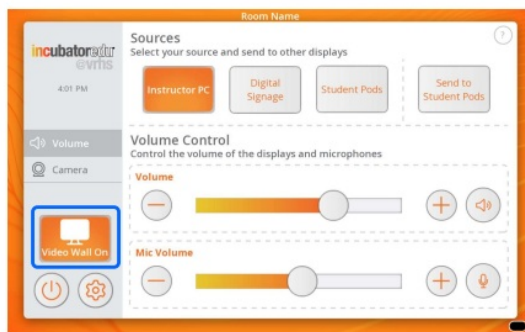
C: Touch desired level on volume bar

### Mute Audio

Press or

*Press again to resume playing audio*

## Display Controls



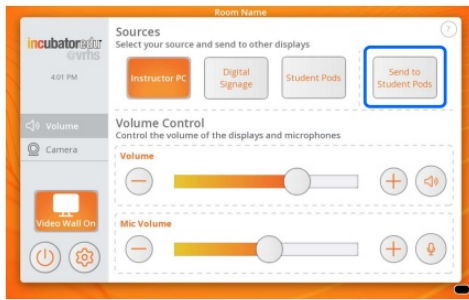
## Turn Video Wall On

Press

## Turn Video Wall Off

Press

## Send to Student Pods



### **Send to Student Pods**

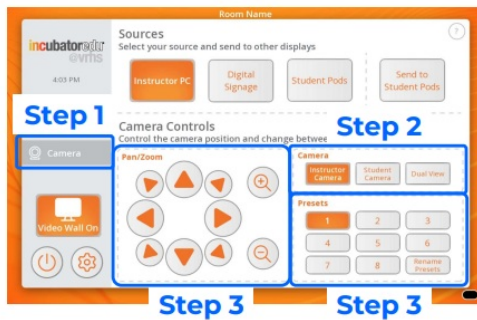
With a source selected, press  
“Send to Student Pods”

*The selected source will be shown  
on all student pods' displays*

### **Switch Back to Local Operation**

Press “End Send to Students Pods”

## **Camera Controls**



### **Step 1: Open Camera Controls**

Press “Camera” tab on left

### **Step 2: Select Camera to Control**

Press “Instructor Camera” or  
“Student Camera”\*

### **Step 3: Choose Operation**

#### **Pan or Tilt Camera**

Press directional buttons

#### **Zoom In or Out**

Press or

#### **Set Camera to Preset Position**

Press name of desired preset

\* Press **Dual View** to view both  
cameras side-by-side

## **Requesting Help**



### **Step 1: Open Help Menu**

Press in top-right corner

### **Step 2: Choose Option**

#### **Download User Guide**

Scan QR Code

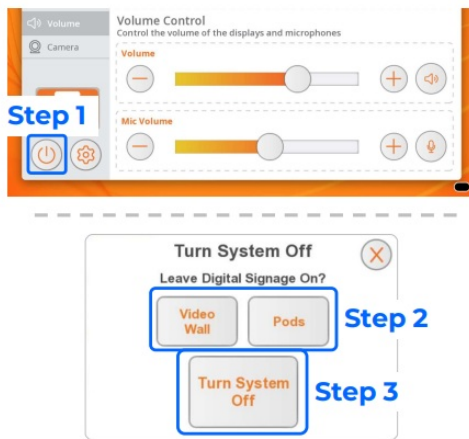
#### **Get Help Via Phone**

Press “Give us a call”

#### **Get Help Via Email**

Press “Send us an email”

## **Turning System Off**



### **Step 1: Open System Off Menu**

Press  in bottom-left corner

### **Step 2: Choose Digital Signage to Leave On**

Press “Video Wall” and/or “Pods”

*The selected displays will show digital signage when the system is off*

### **Step 3: Confirm System Off**

Press “Turn System Off”

## FAQs


### **Q: How do I adjust the microphone volume?**

A: Mic Volume controls can be adjusted by opening the Volume Menu and selecting the Mic Volume option to adjust the room’s microphone levels.

### **Q: Can I view both cameras simultaneously?**

A: Press Dual View in the Camera Controls menu to view both cameras side-by-side.

## Documents / Resources

	<p><a href="#">TEKVOX VRHS Instructor Operation Guide</a> [pdf] User Guide 2024, 08, VRHS Instructor Operation Guide, VRHS, Instructor Operation Guide, Operation Guide, Guide</p>
-------------------------------------------------------------------------------------	----------------------------------------------------------------------------------------------------------------------------------------------------------------------------------------

## References

- [User Manual](#)

### Manuals+. Privacy Policy

This website is an independent publication and is neither affiliated with nor endorsed by any of the trademark owners. The "Bluetooth®" word mark and logos are registered trademarks owned by Bluetooth SIG, Inc. The "Wi-Fi®" word mark and logos are registered trademarks owned by the Wi-Fi Alliance. Any use of these marks on this website does not imply any affiliation with or endorsement.