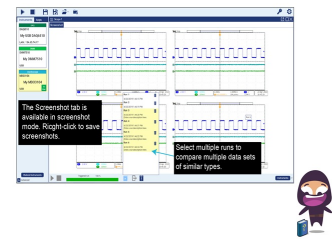


Tektronix®
Tektronix KickStart
Software



Tektronix KickStart Software User Guide

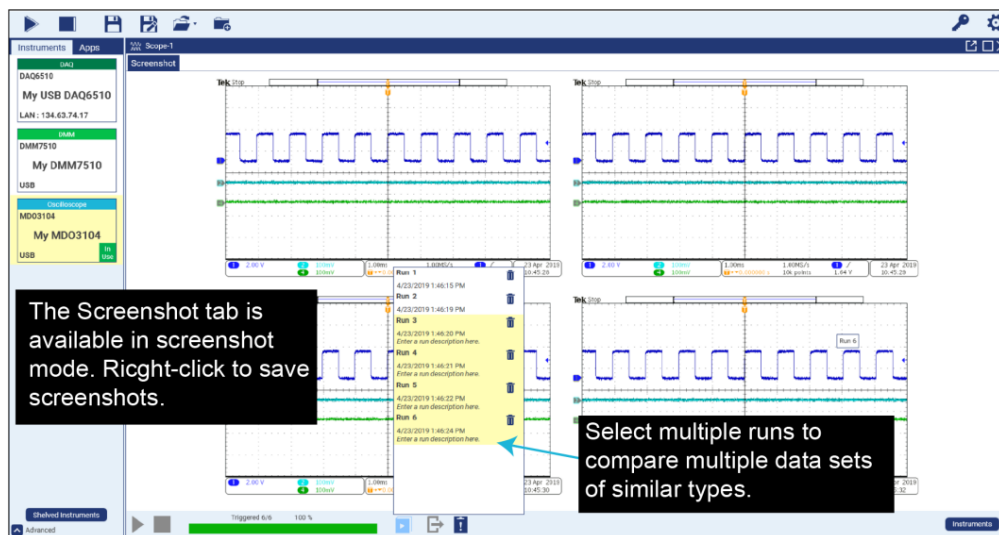
[Home](#) » [Tektronix](#) » Tektronix KickStart Software User Guide 

Contents

- 1 Tektronix KickStart Software
- 2 Product Information
- 3 KickStart software
- 4 Safety precautions
- 5 Manage licenses
- 6 Install a license
- 7 Maintenance and License Key Expiration
- 8 Start a trial license
- 9 Launch an app
- 10 Instrument name and settings
- 11 Application settings examples
- 12 Scope app test settings
- 13 Test results, table and graph display
- 14 Data Logger graph test results
- 15 DMM graph test results
- 16 Power Supply graph test results
- 17 Screenshot tab
- 18 Next steps
- 19 Documents / Resources
 - 19.1 References
- 20 Related Posts

Tektronix®

Tektronix KickStart Software



Specifications:

- Product Name: KickStart Software
- Model: PKKS90301M
- Release Date: September 2024
- Manufacturer: Keithley Instruments
- Website: tek.com/keithley

Product Information

KickStart software drives innovation by providing faster test and measurement results. It allows users to quickly gather real data, plot it, and provide statistical summaries in a reading table. Beyond supporting Keithley instruments, KickStart can also be used to control Tektronix bench oscilloscopes. With a license, users can create applications, manage settings, and export previous runs.

Usage Instructions:

Safety Precautions:

Before using the product, review the safety precautions associated with your instrument. Ensure that personnel using the software are aware of shock hazards and understand instrument safety precautions to prevent injury or damage. Refer to the instrument user documentation for complete specifications.

Managing Licenses:

To manage the KickStart software license:

1. Select the key icon located in the upper right-hand corner of the interface.
2. View previously-entered licenses, expiration dates, and support details.

Installing a License:

To install a license file:

1. Open the KickStart software and select the key icon in the upper right-hand corner.
2. Submit your Host ID to TekAMS.

3. Download the license file from TekAMS.
4. Install the license file using the Manage Licenses window.

FAQ:

Q: How can I obtain a trial license for KickStart software?

A: You can request a limited-time trial license by visiting tek.com/keithley-kickstart.

KickStart Software QUICK START GUIDE

kickstart

KickStart Software

Quick Start Guide

- Keithley Instruments
- 28775 Aurora Road
- Cleveland, Ohio 44139
- 1-[800-833-9200](tel:8008339200)
- tek.com/keithley

KickStart software

KickStart drives innovation by providing faster test and measurement results. You can take the instrument out of the box and quickly get real data.

KickStart plots data immediately while offering quick, statistical summaries in a reading table. It allows you to gather insights faster and make the decisions you need to move on to the next stage of device development. You can focus your time on interpreting test results so that you can meet your goals.

Beyond Keithley arbitrary function generators, power supplies, data acquisition instruments, digital multimeters (DMMs), and source measure units (SMUs), KickStart can also be used as oscilloscope software to control Tektronix bench oscilloscopes.

You can create applications, manage settings, and view and export previous runs without a license. With a license, including the limited-time trial license, you can use KickStart to run an application, communicate with an instrument, or control an instrument. The trial license includes all of the KickStart applications.

Go to tek.com/keithley-kickstart for:

- Information about the software
- A link to download the trial software
- A link to buy the software or to request a quote.

Safety precautions

Before using this product, see the safety precautions associated with your instrument. The instrumentation

associated with this software is intended for use by personnel who recognize shock hazards and are familiar with the instrument safety precautions to avoid possible injury or death. Read and follow all installation, operation, and maintenance information carefully before using any instrument.

Refer to the instrument user documentation for complete product specifications. If the product is used in a manner not specified, the protection provided by the product warranty may be impaired. Safety precaution revision as of January 2018.

KKS-903-01 Rev. M September 2024

Manage licenses

The KickStart software license unlocks KickStart applications and other features.

The license can be purchased with the software, or you can request a limited-time trial. The trial license allows you to use the full functionality of KickStart for a limited period of time.

To manage the KickStart license:

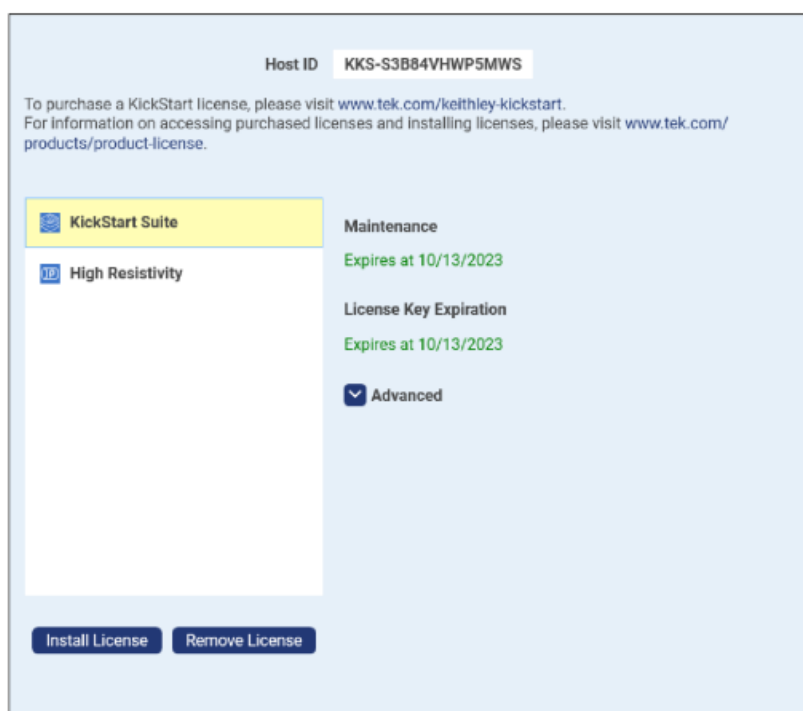
1. Select the key icon located in the upper right hand corner.
- 2.

Figure 1: KickStart Menu Bar



You can view previously-entered licenses and the dates and times for when the licenses were entered and when they expire.

Figure 2: Manage Licenses



NOTE


Each license entitles you to support from Tektronix worldwide technical support centers and field applications engineers.

Install a license

Each KickStart license is valid for a single computer and is managed using the Tektronix Asset Management System(TekAMS)(tek.com/en/support/products/product-license), which you can visit for more information. You can use TekAMS to unregister the license on your computer so that you can move the license to a different computer.

The email address of the primary user or administrator who manages the license is the license key manager.

Key managers are authorized to add users who can then access these licenses and assign them to specific instruments and computers.

To install or remove a license, select the key icon. 

To generate and install a license file:


1. Open the KickStart software and select the key icon in the upper right-hand corner of the interface. 
- 2.
3. Submit your Host ID to TekAMS. The Host ID is located at the top of the Manage Licenses window.
4. Download the license file from TekAMS.
5. Using the Manage Licenses window, select Install License and browse to the downloaded license file.



Figure 3: Install a License

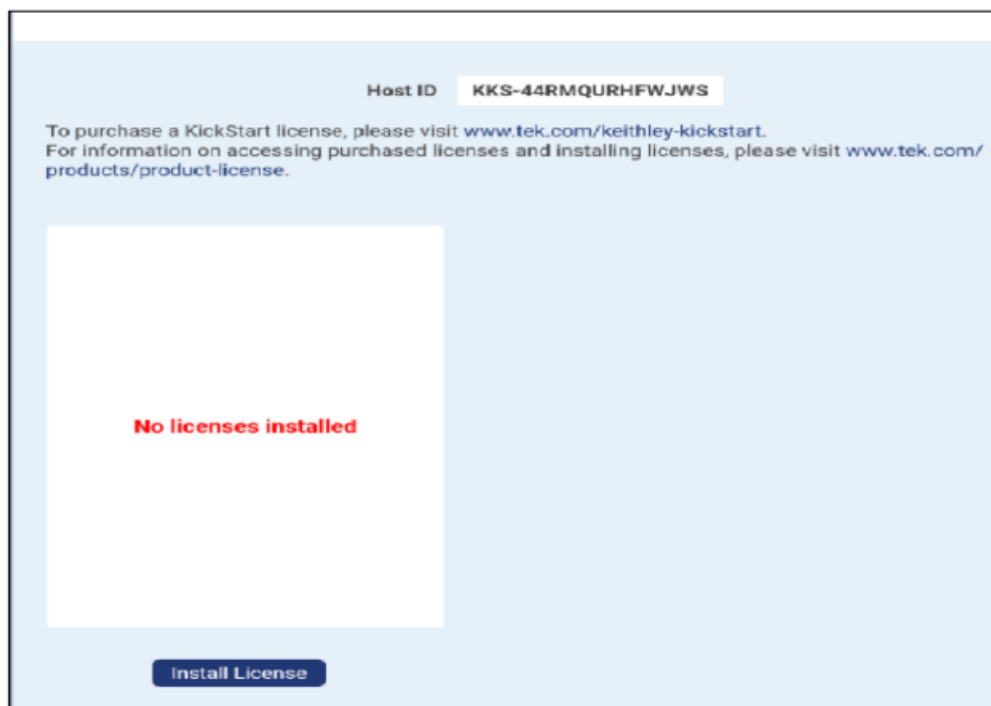


Figure 4: Select install license

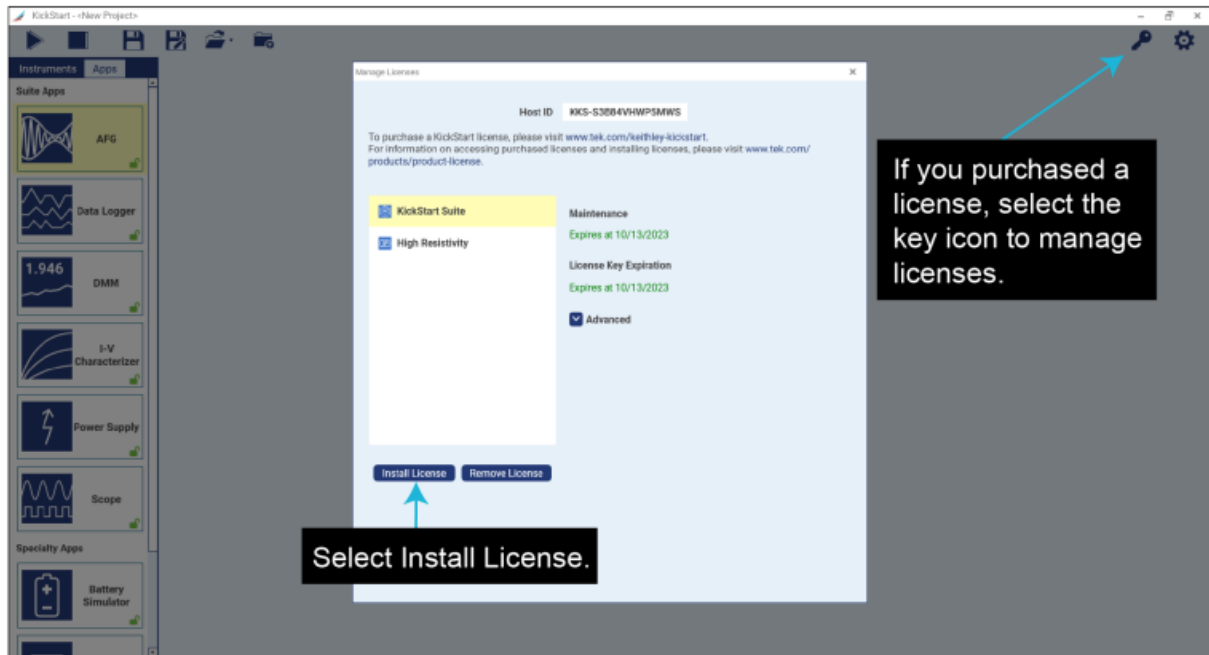
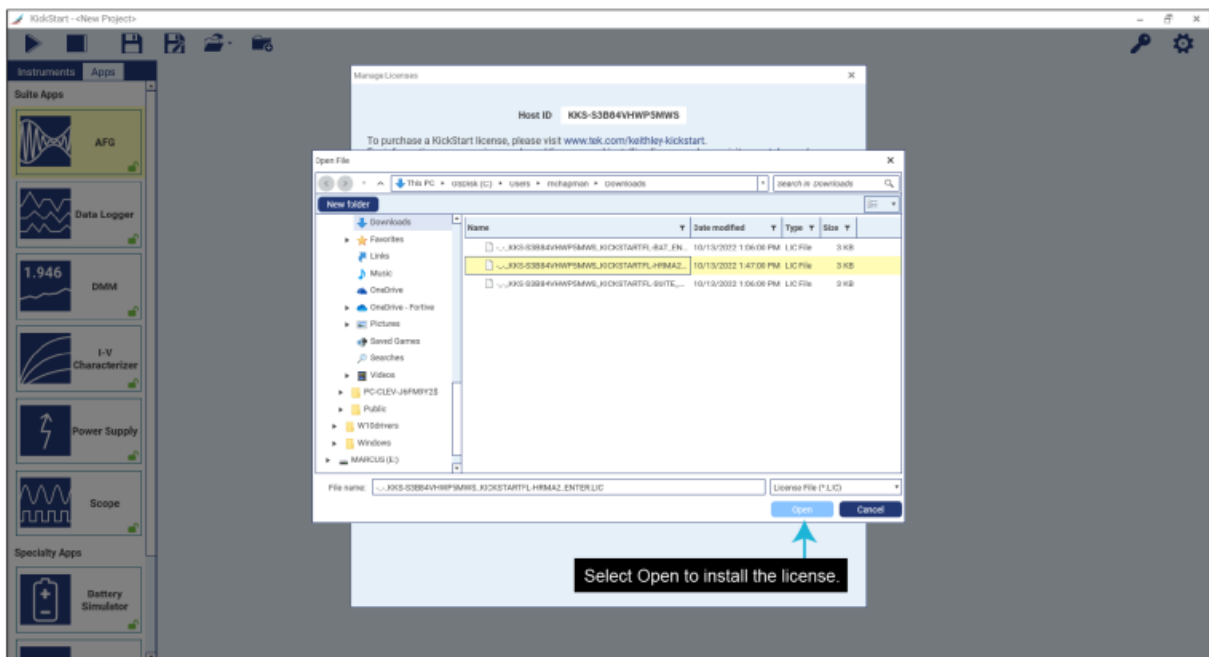
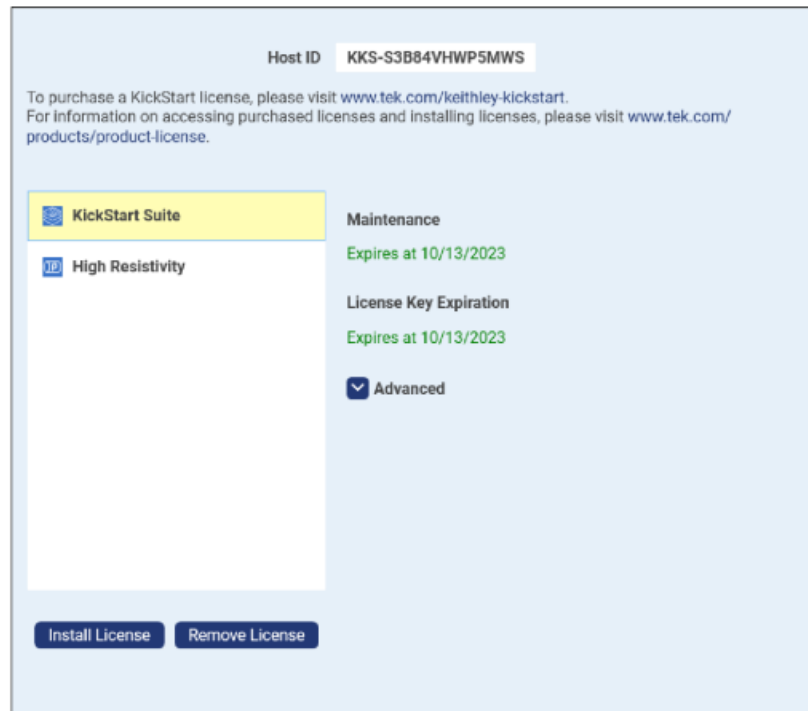


Figure 5: Open the license file



6. After the license is entered, you can view the license and its details.

Figure 6: Manage Licenses



Maintenance and License Key Expiration

You can manage license expiration in the Manage Licenses window.

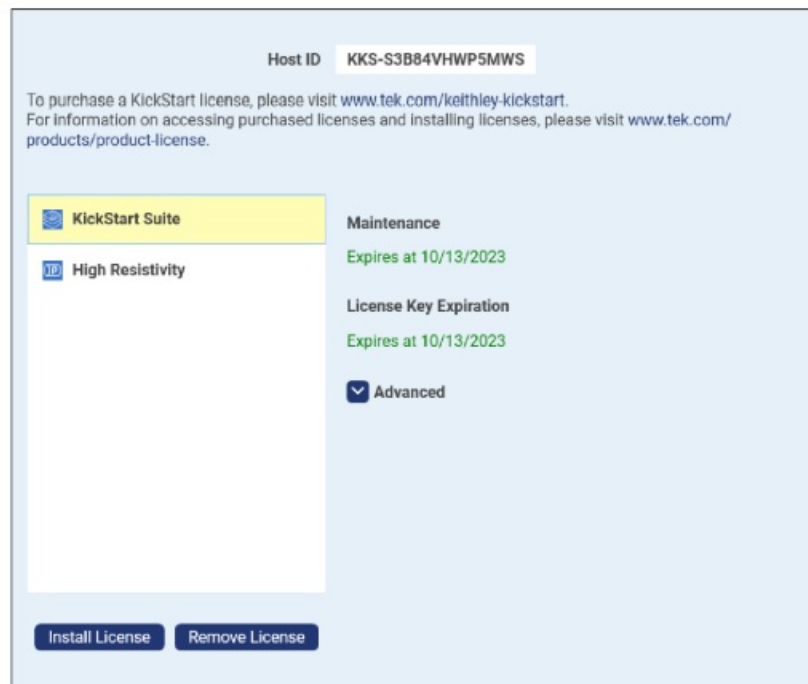
Maintenance:

The Maintenance period is the time where the perpetual license is eligible for software updates. The date shown is the date your maintenance will expire. If your maintenance expires, you will not be able to make future updates to your software.

License Key Expiration:

Indicates the date when the license for your specific PC will expire. When you generate your license file in TekAMS, you can set the checkout time. Once checkout expires, you will need to check out another license file in TekAMS. If you need to move the license to a different PC, select Remove License to remove it from this PC. Next, check the license into TekAMS, then generate a new license file in TekAMS for the new PC.

Figure 7: Manage Licenses



Start a trial license

The trial license allows you to use the full functionality of KickStart for a limited period of time. When you open the KickStart application, the Instruments tab displays the available instruments. Select the Apps tab and you will see a lock icon on each app.

NOTE

The following illustration is for informational purposes only; you will not see both red and green locks.

- An open red lock indicates the license or trial will expire within 30 days. If the red lock is closed the license has expired and a trial license is not an option.
- An open green lock indicates a license is in use.
- A closed green lock indicates a trial or license is available but has not been activated.

Figure 8: Lock icons explained

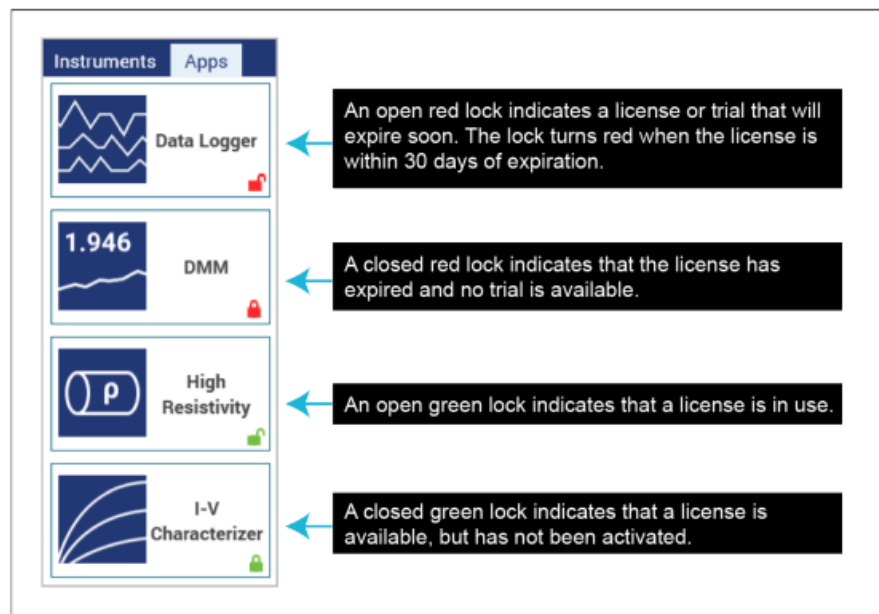


Figure 9: Start trial

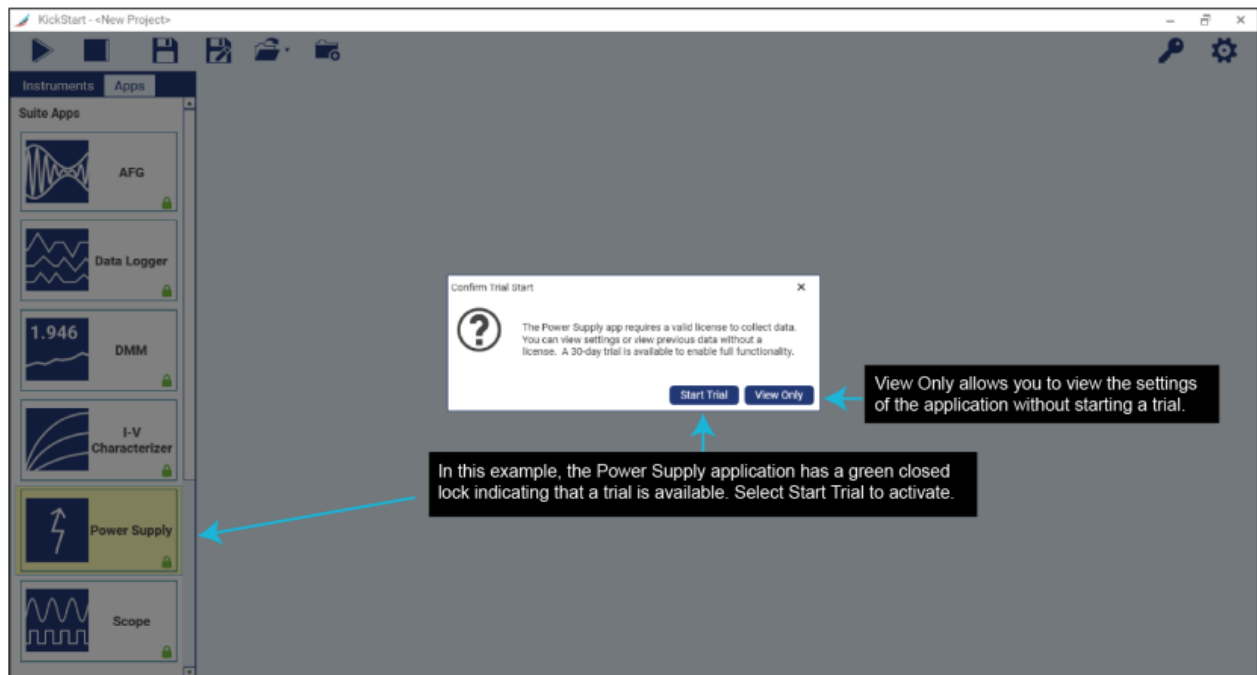
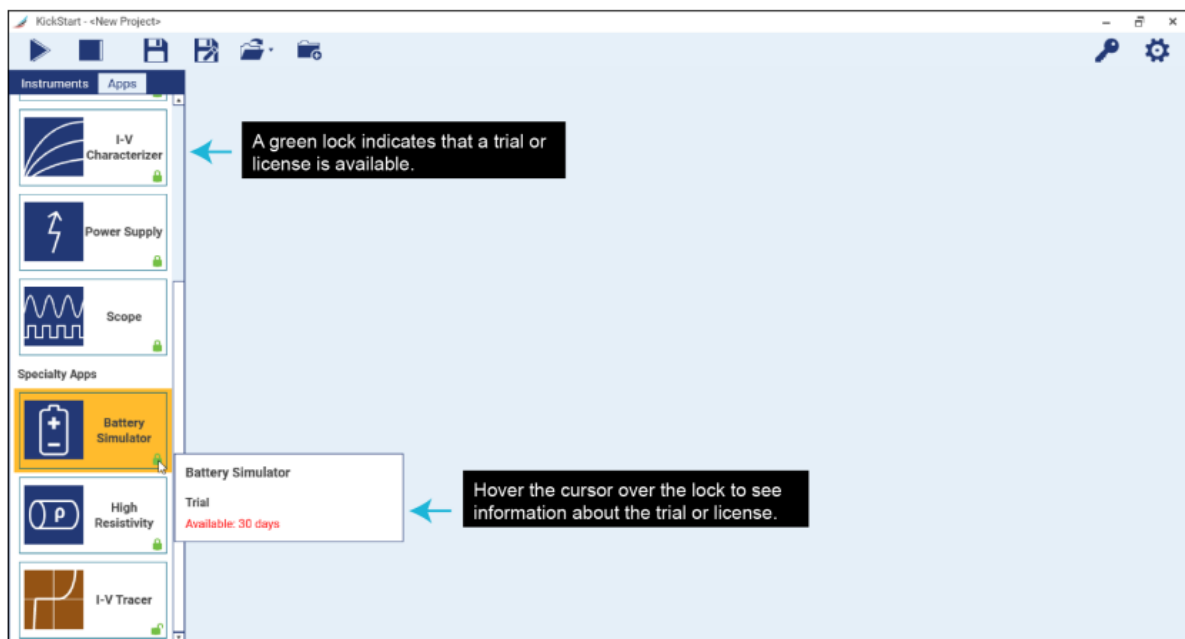


Figure 10: Trial activated

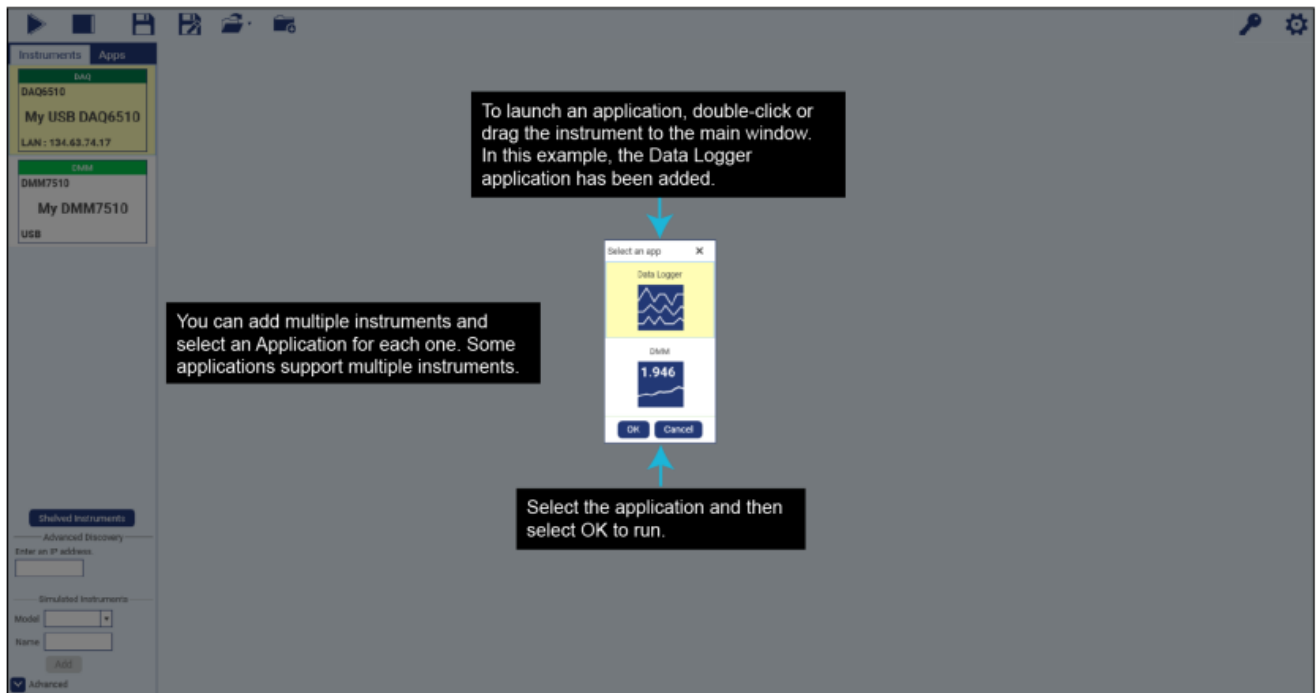


Launch an app

To launch an application:

1. To launch an app, double-click or drag an instrument to the main window. In this example, the Data Logger application has been added.
2. Select the application.
3. Select OK to run it.

Figure 11: Launching an app



NOTE

You can also drag an app from the Apps tab to the main window and select an applicable connected instrument.

NOTE

You can add multiple instruments and select an application for each one. Some applications support multiple instruments.

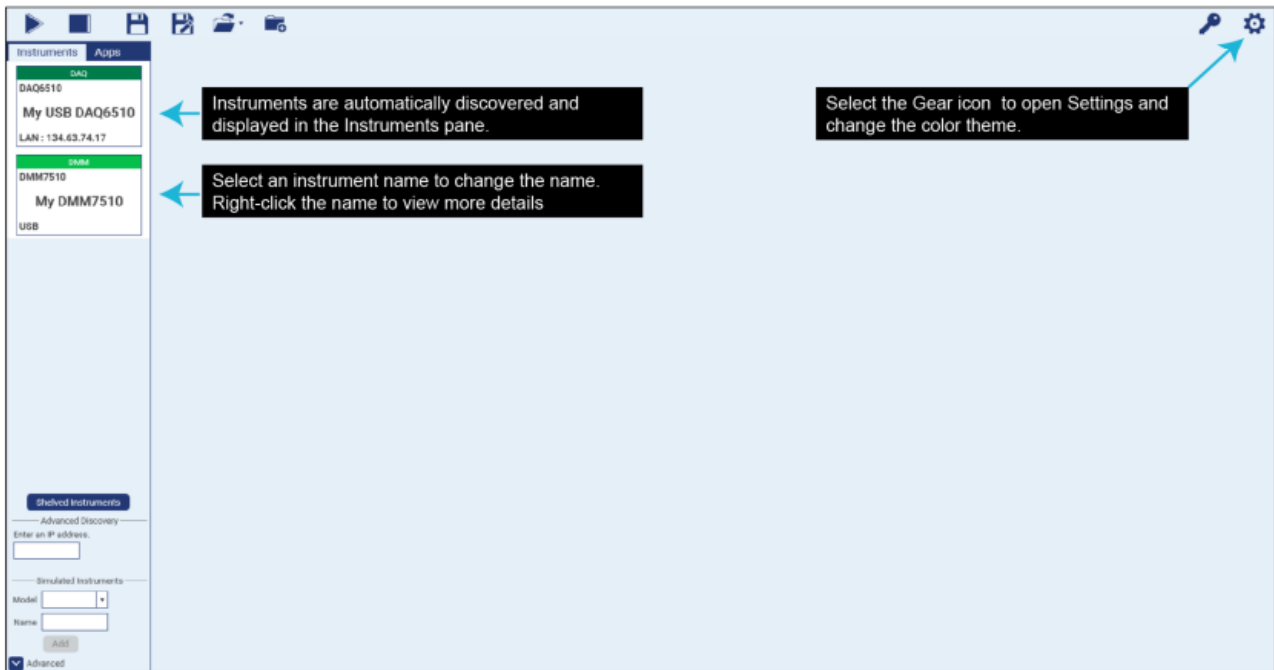
Instrument name and settings

Instruments are automatically discovered. They will appear in the instruments pane.

To change an instrument name or settings:

1. Select an instrument name to change it.
2. Right-click it to view more details.

Figure 12: Instrument name



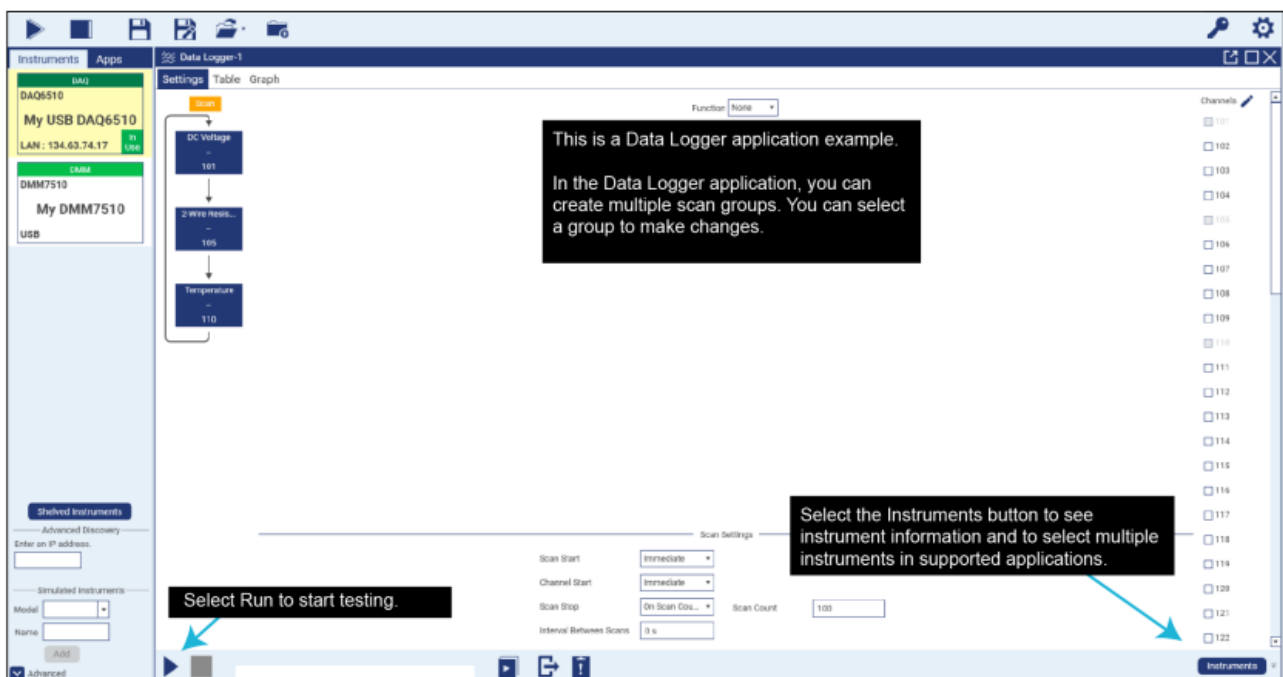
Application settings examples

The following examples show how to set test settings in each app. These are representative of the various apps in KickStart.

Data Logger test settings

With the KickStart Data Logger app, you can setup and control your multi-channel data acquisition instrument. It allows you to set up multiple channels with the same configuration, but be sure to give each channel a meaningful label so that you can quickly scan your results and grab the information you need.

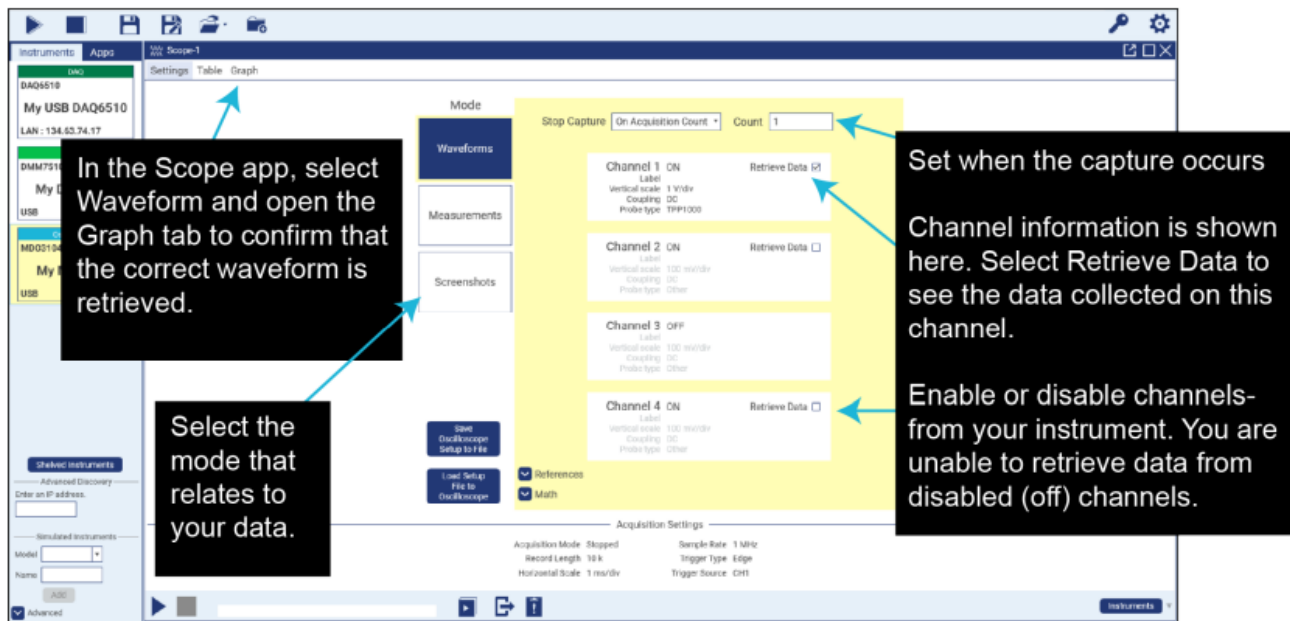
Figure 3: Install a License



Scope app test settings

Use the Scope app for data capture and data logging of waveforms, measurements, and screen shots.

Figure 12: Scope app test settings



Test results, table and graph display

While running an app you can view the results in a table or in a graph view. The following examples show how to use the displays to review acquired data. These are representative of the various apps in KickStart.

Data Logger table test results

While running the Data Logger app, you can view the results in a table or a graph. Rename or hide a column by moving your cursor to the far right and selecting the menu. This functionality is available in any app.

To use the Table View:

1. Select Table in the Settings.
2. Rename or hide columns by moving your cursor to the right edge and selecting the menu.

Figure 13: Data Logger table test results

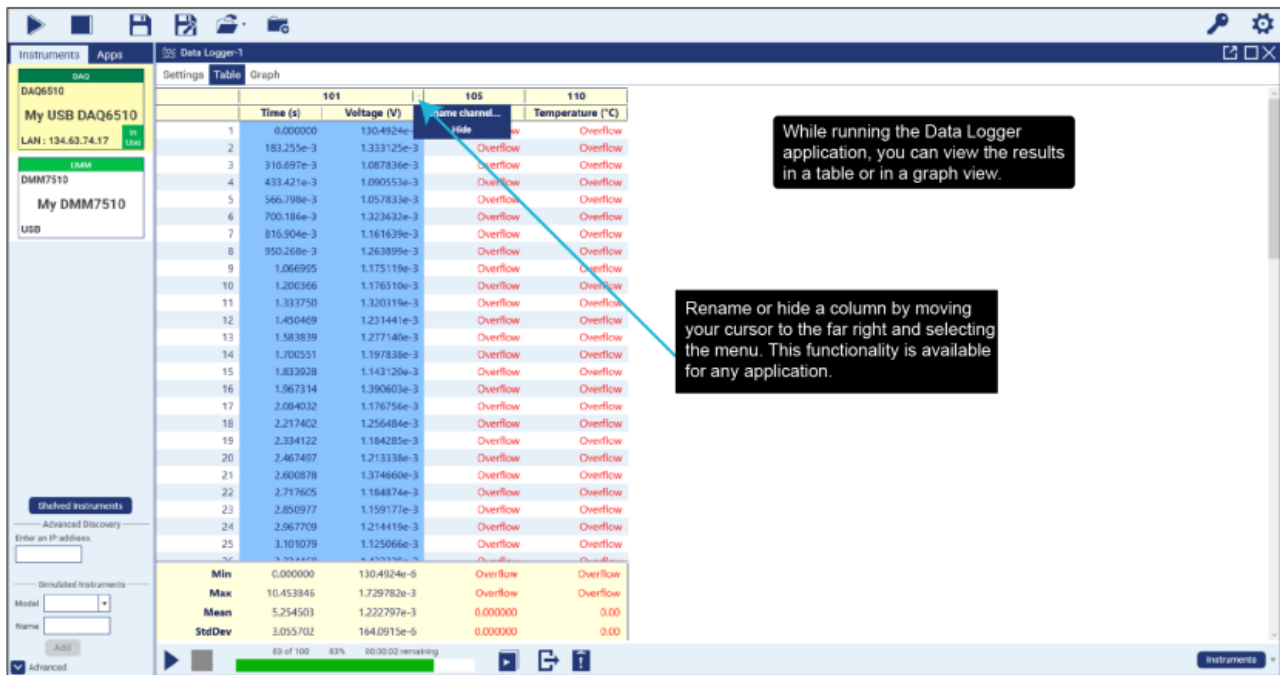
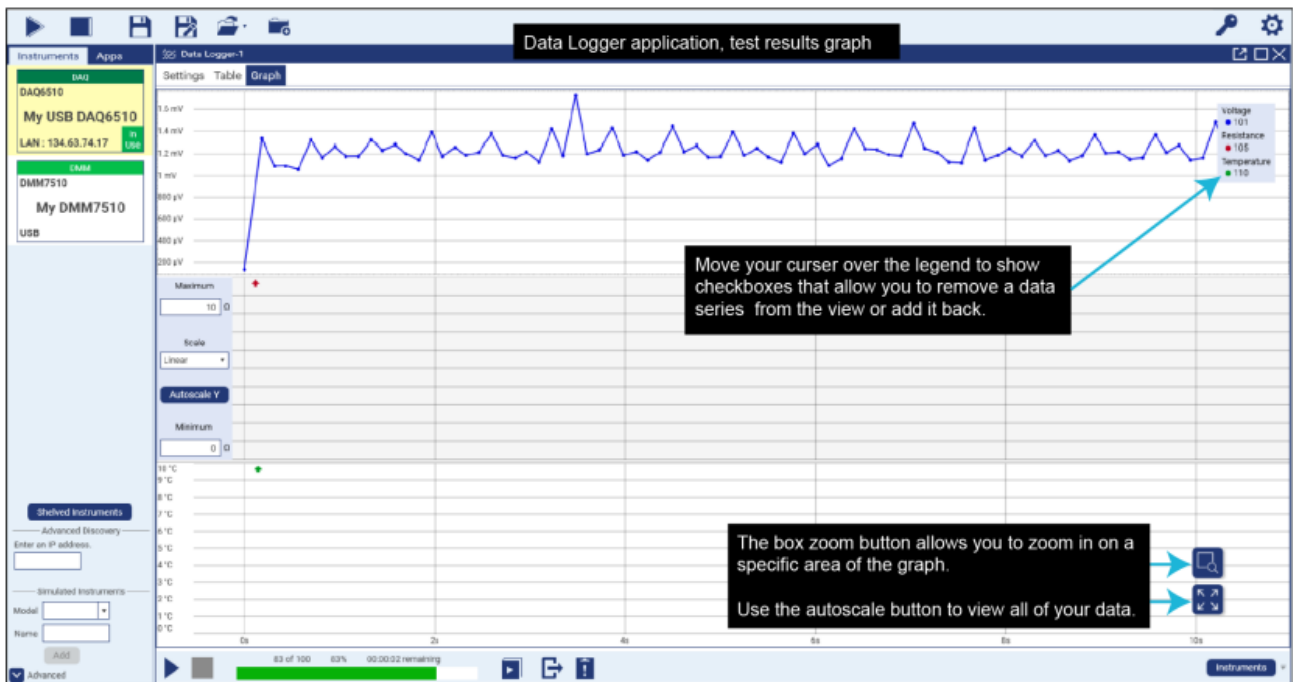


Figure 14: Data Logger graph test results

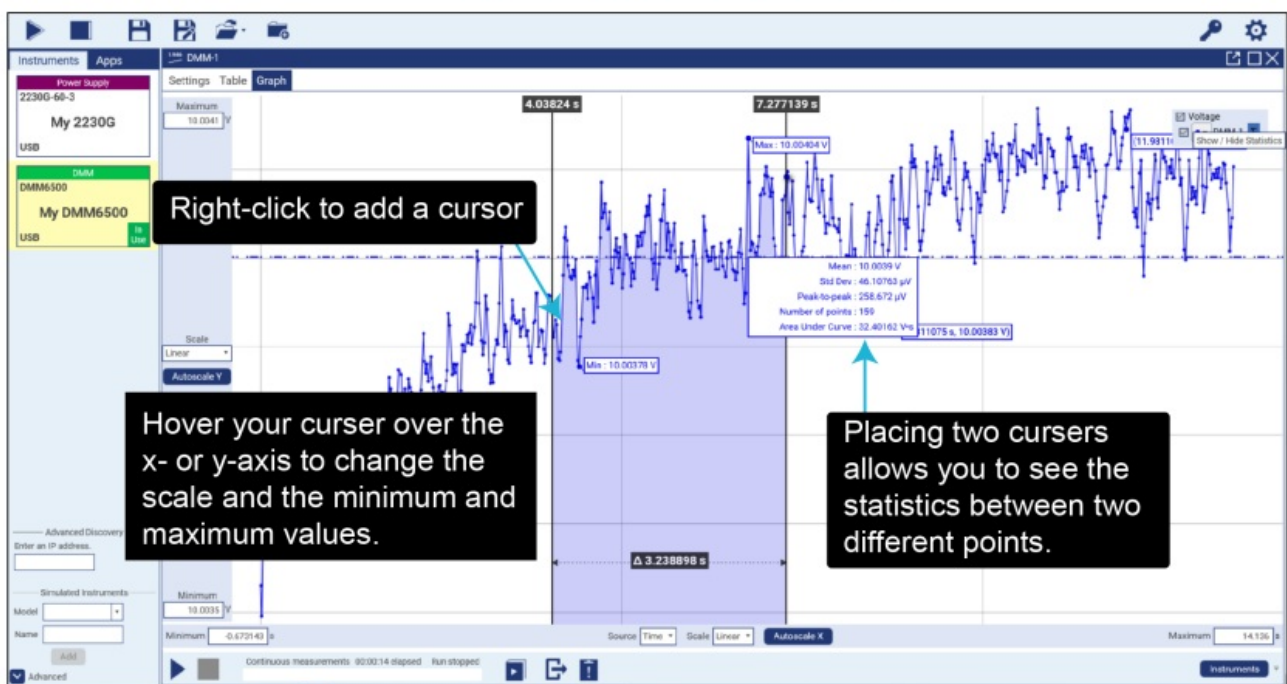


DMM graph test results

To use the DMM graph app:

1. Right-click to add a cursor.
2. Hover your cursor over the X- or Y-axis to change the scale and the minimum and maximum values.
3. Placing two cursors allows you to see the statistics between two different points.

Figure 15: DMM Application test results

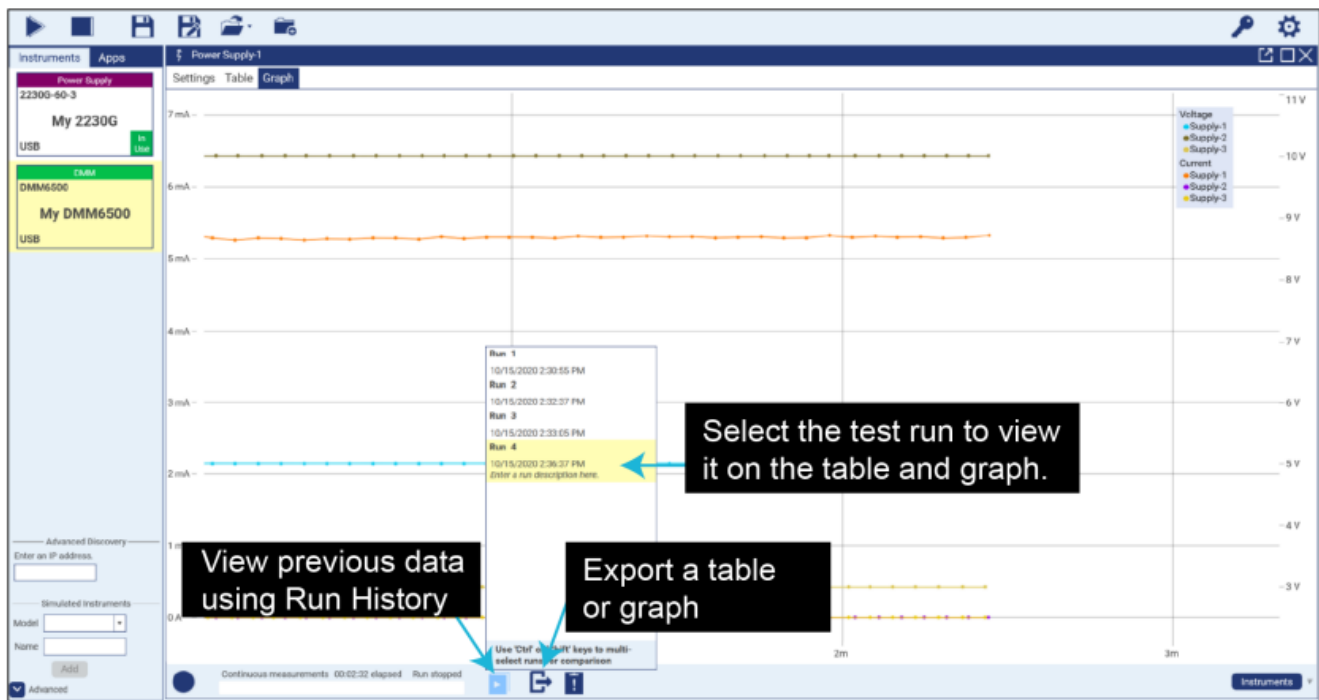


Power Supply graph test results

This application simplifies supplying power to your device or system.

- You can view previous data using Run History.
- You can select a test run in order to view the results on a table or graph.
- You can export a table or graph.

Figure 16: Graph test results



Export selected data

- When you select the export icon, the Export Data window opens. Here you can choose to export a table, graph, or both.
- You can set your test runs to export automatically.

To export selected data:

1. Choose the path for the saved files.
2. Create a file name for the resulting data file.

NOTE

The Automatically export new runs option automatically exports data in the selected format during each run. If left unselected, you need to manually Export selected runs or Export all runs when you want data exported.

You can also choose to Export Selected Runs or Export All runs.

Figure 17: Export selected data

Export Data

☒ Export Table

Format: CSV

☒ Exclude hidden data

☒ Include test configuration

☒ Include statistics

☒ Export Graph

Color theme: ☐ Light ☒ Dark

Resolution: 800 x 600

☒ Show gridlines

☒ Automatically export new runs

Path: C:\Users\estark\Documents\KickStart\Projects

Filename: <app-name> <run> <time>

Example: I-V Characterizer-1 Run 1 2022-10-18T14.24.30.png
I-V Characterizer-1 Run 1 2022-10-18T14.24.30.csv

Export Selected Runs Run 1

Export All Runs Run 1

Screenshot tab

How to navigate the screenshot tab:

1. The Screenshot tab is available in screenshot mode.
2. Right-click to save screenshots.
3. Select multiple runs to compare multiple datasets of similar types.

NOTE

Using multiple runs to compare multiple datasets of similar types when displaying data in a graph setting is a feature available in all of the Apps.

Figure 18: Screenshot tab



Next steps

For more information and to view documentation specific to your instrument, see the Keithley Instruments website: tek.com/keithley.

© 2024, Keithley Instruments, LLC
Cleveland, Ohio, U.S.A.
All rights reserved.

Any unauthorized reproduction, photocopy, or use of the information herein, in whole or in part, without the prior written approval of Keithley Instruments, LLC, is strictly prohibited.

These are the original instructions in English.

All Keithley Instruments product names are trademarks or registered trademarks of Keithley Instruments, LLC. Other brand V names are trademarks or registered trademarks of their respective holders.

Microsoft, Visual C++, Excel, and Windows are either registered trademarks or trademarks of Microsoft Corporation in the United States and/or other countries.

Document number: KKS-903-01 Rev. M September 2024

Specifications are subject to change without notice.

All Keithley trademarks and trade names are the property of Keithley Instruments. All other trademarks and trade names are the property of their respective companies.

Keithley Instruments • 28775 Aurora Road • Cleveland, Ohio 44139 • 1- [800-833-9200](tel:800-833-9200) • tek.com/keithley

KEITHLEY

A Tektronix Company

Documents / Resources

	Tektronix KickStart Software [pdf] User Guide KickStart Software, Software
--	---

References

- [Ⓜ Product License | Tektronix](#)
- [Ⓜ Keithley Instruments & Products | Tektronix](#)
- [Ⓜ Keithley KickStart Software | Tektronix](#)
- [User Manual](#)

[Manuals+](#), [Privacy Policy](#)

This website is an independent publication and is neither affiliated with nor endorsed by any of the trademark owners. The "Bluetooth®" word mark and logos are registered trademarks owned by Bluetooth SIG, Inc. The "Wi-Fi®" word mark and logos are registered trademarks owned by the Wi-Fi Alliance. Any use of these marks on this website does not imply any affiliation with or endorsement.