



Tefal SW852D Snack Collection Multi-Function Sandwich Maker Instruction Manual

[Home](#) » [Support](#) » Tefal SW852D Snack Collection Multi-Function Sandwich Maker Instruction Manual 

Contents

- [1 Tefal SW852D Snack Collection Multi-Function Sandwich Maker](#)
- [2 SAFETY INSTRUCTIONS IMPORTANT SAFEGUARDS](#)
- [3 Do](#)
- [4 Do not](#)
- [5 Advice/information](#)
- [6 Environment](#)
- [7 Removable Plates](#)
- [8 Precautions](#)
- [9 How to Fit Plates](#)
- [10 How to Use](#)
- [11 How to Remove Plates](#)
- [12 Cleaning And Maintenance](#)
- [13 FAQ's](#)
- [14 Related Posts](#)

Tefal®

Tefal SW852D Snack Collection Multi-Function Sandwich Maker



SAFETY INSTRUCTIONS IMPORTANT SAFEGUARDS

- This appliance is intended for indoor, domestic household use only.
- It is not intended to be used in the following applications, and the guarantee will not apply for:
 - staff kitchen areas in shops, offices, and other working environments; a
 - farm houses;
 - by clients in hotels, motels, and other residential-type environments;
 - bed and breakfast type environments.
- This appliance is not intended for use by persons (including children) with reduced physical, sensory, or mental capabilities, or lack of experience and knowledge unless they have been given supervision or instruction concerning the use of the appliance by an adult responsible for their safety.
- Children should be supervised to ensure that they do not play with the appliance.
- This appliance can be used by children aged 8 years and above and persons with reduced physical, sensory, or mental capabilities or lack of experience and knowledge if they have been given supervision or instruction concerning the use of the appliance in a safe way and understand the hazards involved. Children shall not play with the appliance. Cleaning and user maintenance shall not be made by children unless they are older than 8 and supervised. Keep the appliance and its cord out of 2 reach of children less than 8 years.
- Accessible surface temperatures can be high when the appliance is operating. Do not touch the hot surfaces of the appliance.
- This appliance is not intended to be operated by means of an external timer or separate remote-control system.
- If the power supply cord is damaged, it must be replaced by the manufacturer or its after-sales service in order to avoid any danger.
- Wash the plates with a damp sponge. Use a cloth to clean the body of the appliance.

Do

- Before first use, remove all packaging materials, stickers, and accessories from the inside and the outside of

the appliance.

- **CAUTION:** the safety precautions, common to different versions depending on the accessories supplied with your appliance, are part of the appliance. Read them carefully before using your new appliance for the first time. Keep them in a place where you can find them and refer to them later on.
- Always plug the appliance into an earthed socket.
- Any intervention other than normal cleaning and maintenance by the customer must be performed by an Approved Service Centre.
- Make sure that the electric power supply is compatible with the power rating and voltage indicated on the bottom of the appliance.
- Do not use an extension lead. If you accept liability for doing so, only use an extension lead that is in good condition, has a plug with an earth connection and is suited to the power rating of the appliance.
- Position the power cord carefully, whether an extension is used or not so that guests can move freely around the table without tripping over it.
- Cooking fumes may be dangerous for animals that have a particularly sensitive respiratory system, such as birds. We advise bird owners to keep them away from the cooking area.
- If the appliance is used in the center of the table, keep it out of the reach of children.
- If an accident occurs, rinse the burn immediately with cold water and call a doctor if necessary.
- Fully unwind the power cord before plugging in the appliance.

Do not

- Never leave the appliance plugged in when not in use.
- Never run the appliance empty.
- Do not heat the appliance in a vertical position.
- Never leave the appliance unattended when in use.
- To prevent the appliance from overheating, do not place it in a corner or below a wall cupboard.
- Never place the appliance directly on a fragile surface (glass table, tablecloth, varnished furniture, etc.) or on a soft surface such as a tea towel.
- Never place the appliance on or near hot or slippery surfaces; the power cord must never be close to or in contact with hot parts of the appliance, close to a source of heat or resting on sharp edges.
- Do not place cooking utensils on the cooking surfaces of the appliance.
- To preserve the cooking surface do not use metallic utensils.
- Never cut food directly on the plates.
- Do not use metal scourers or scouring powders to avoid damaging the cooking surface (non-stick coating).
- Never immerse the appliance, or power cord or plug in water or any other liquid. They are not dishwasher safe.
- To avoid spoiling your appliance, do not use flambé recipes in connection with it at any time.
- Do not use aluminium foil or other objects between the plate and the food being cooked. Do not cook food in aluminium foil.

Removable plates:

- To prevent damage to the plates, only use them on the appliance for which they were designed (e.g., do not place in an oven, on the gas ring or electric hot plate, etc.).
- Check that both faces of the plate are cleaned before use. Never turn the plate over during use.

- Plates should not be handled while they are hot.
- Do not place the hot plate on a fragile surface or under water.
- The heating coil is not to be cleaned. If it is really dirty, wait until it has cooled down and wipe with a dry cloth.

Advice/information

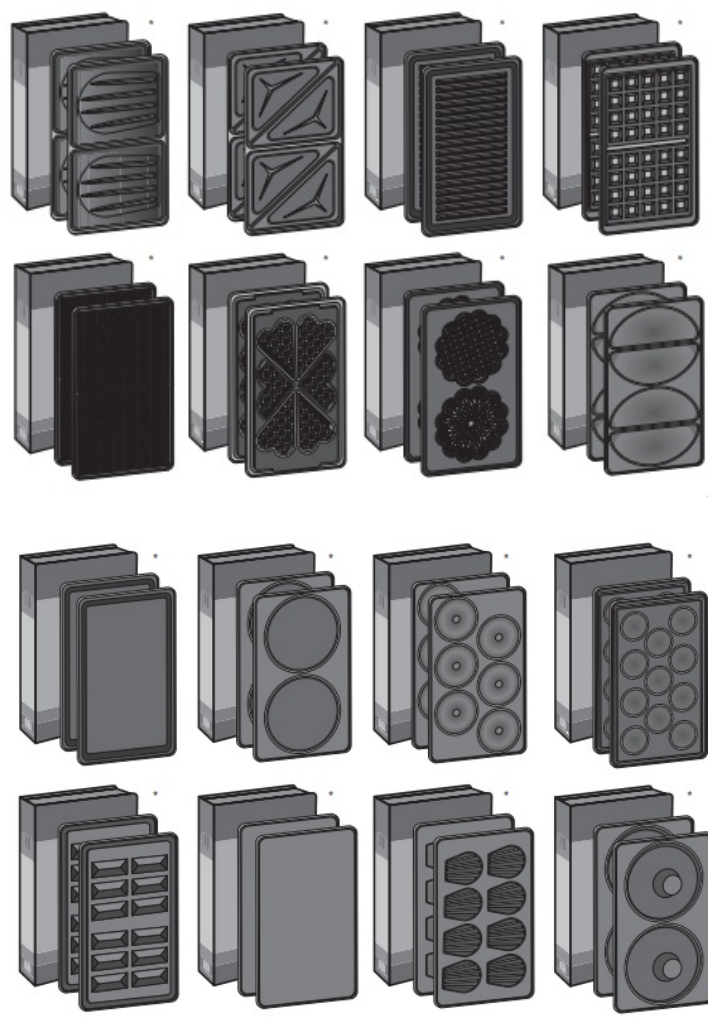
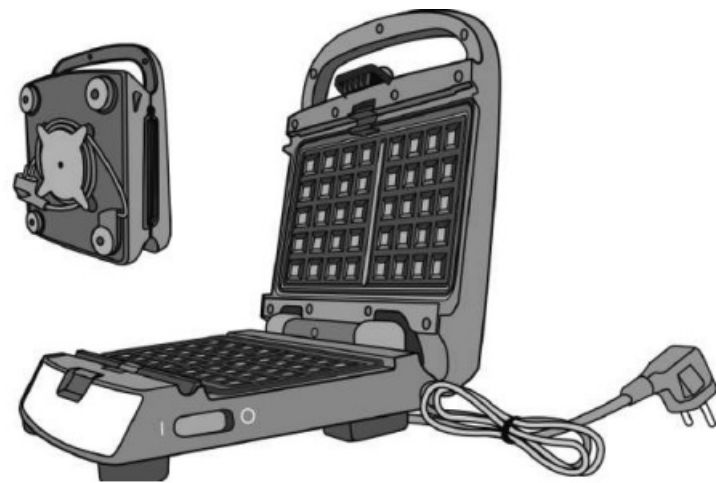
- Thank you for buying this appliance, which is intended for domestic use only.
- For your safety, this appliance conforms to applicable standards and regulations (Low Voltage Directive, Electromagnetic Compatibility, Environment, Materials in contact with food...).
- On first use, there may be a slight odour and a little smoke during the first few minutes.
- Our company has an ongoing policy of research and development and may modify these products without prior notice.
- Any solid or liquid foods that come into contact with parts marked with the symbol are unfit for consumption.
- Only use accessories supplied with the appliance or acquired from an approved service centre.
- Before disposing of your appliance, the timer battery must be removed and disposed of in a dedicated waste collection centre or service centre (depending on the model).

Environment

Environment protection first!

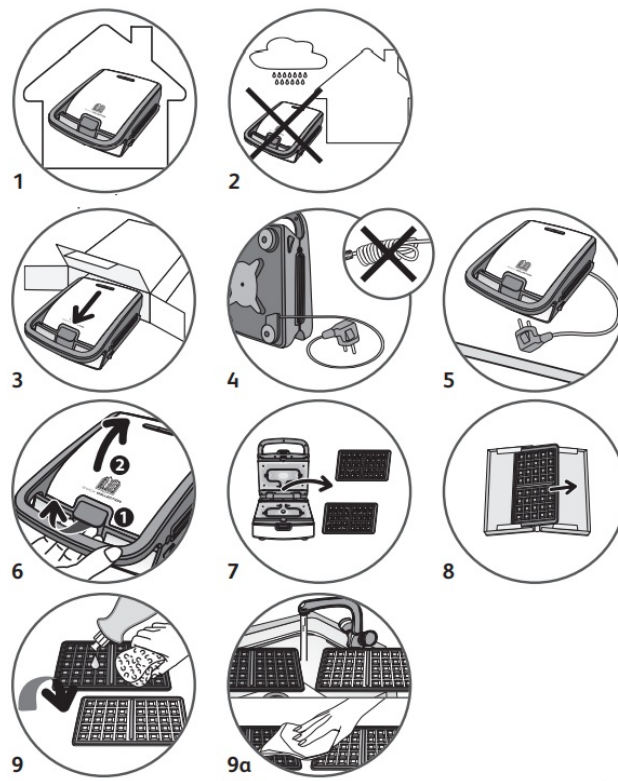
- Your appliance contains valuable materials which can be recovered or recycled.
- Leave it at a local civic waste collection point.

Removable Plates

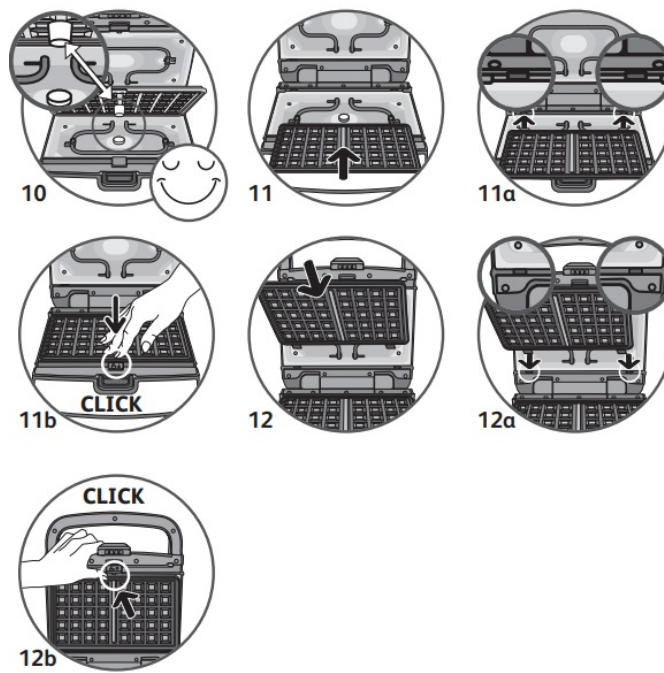


Depending on the model and/or availability in store or online.

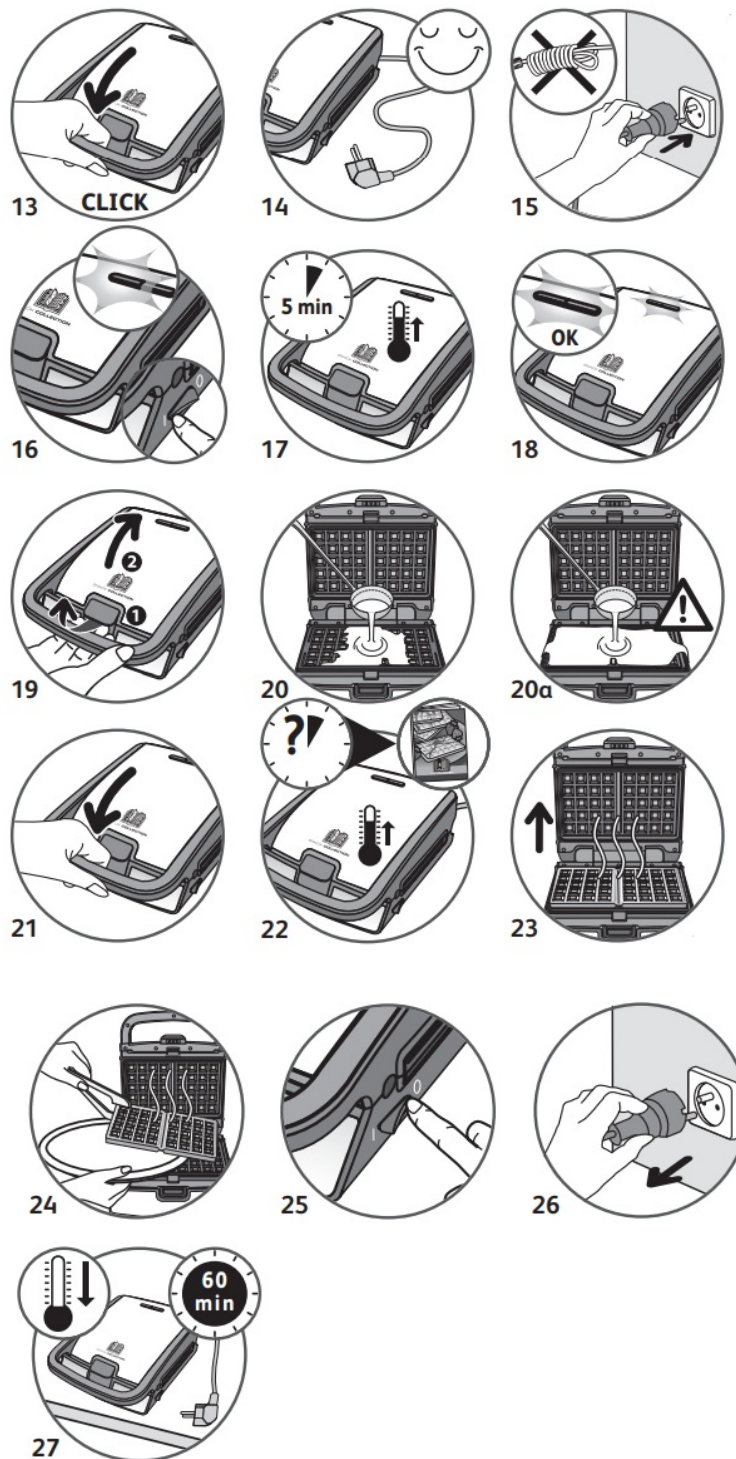
Precautions



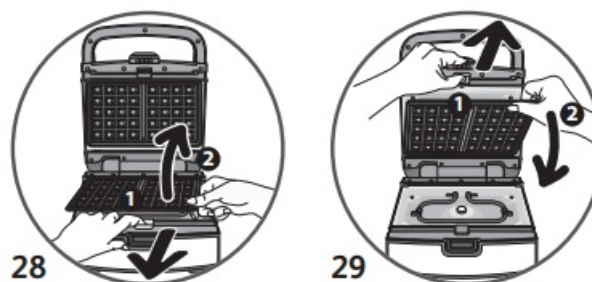
How to Fit Plates



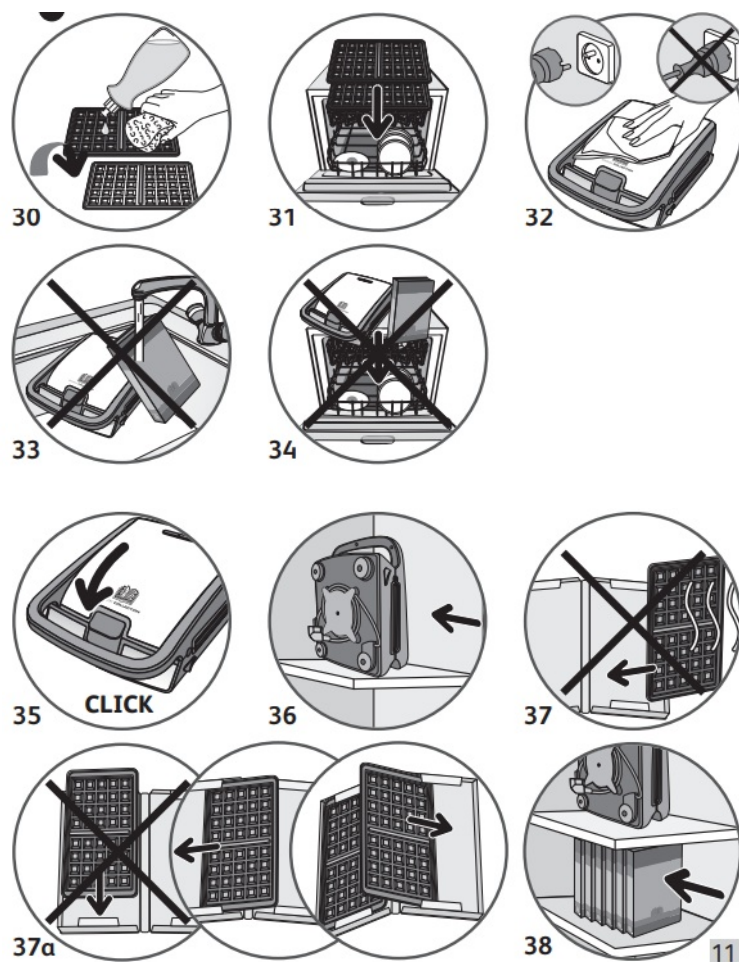
How to Use



How to Remove Plates



Cleaning And Maintenance



FAQ's

What is the model of the Tefal sandwich maker?

The model is Tefal SW852D Snack Collection Multi-Function Sandwich Maker.

How many sandwich plates are included with the Tefal SW852D?

The Tefal SW852D comes with two sets of sandwich plates, which allow you to make triangular toasted sandwiches.

Can I use the Tefal SW852D to make other types of snacks?

Yes, the Tefal SW852D is a multi-function sandwich maker that comes with additional interchangeable plates. It allows you to make various snacks like waffles, paninis, and even grilled meat or vegetables.

Are the plates non-stick?

Yes, the sandwich plates included with the Tefal SW852D are coated with a non-stick material, making it easy to remove the food and clean the plates.

How long does it take to heat up the Tefal SW852D sandwich maker?

The Tefal SW852D sandwich maker heats up relatively quickly and typically takes around 3-5 minutes to reach the desired cooking temperature.

Does the Tefal SW852D have adjustable temperature settings?

No, the Tefal SW852D does not have adjustable temperature settings. It operates at a fixed temperature suitable for making sandwiches, waffles, paninis, and other snacks.

Is the Tefal SW852D sandwich maker easy to clean?

Yes, the Tefal SW852D sandwich maker is designed for easy cleaning. The non-stick plates can be wiped clean with a damp cloth, and they are also dishwasher safe.

Does the Tefal SW852D have a safety feature?

Yes, the Tefal SW852D has a safety feature that includes a heat-resistant handle to prevent burns during operation. Additionally, it has a locking latch to ensure the sandwich maker remains closed while in use.

What is the power consumption of the Tefal SW852D?

The Tefal SW852D operates at a power consumption of approximately 700-800 watts.

Can I store the Tefal SW852D vertically?

Yes, the Tefal SW852D sandwich maker has a vertical storage option. This allows for convenient storage in cabinets or on countertops with limited space.

Can I use the Tefal SW852D sandwich maker with different types of bread?

Yes, the Tefal SW852D can accommodate various types of bread, including sliced bread, baguettes, ciabatta, and more.

How many sandwiches can I make at once with the Tefal SW852D?

The Tefal SW852D allows you to make two sandwiches at a time using the triangular sandwich plates.

Are the additional plates for waffles and paninis included with the Tefal SW852D?

Yes, the Tefal SW852D comes with the triangular sandwich plates as well as separate plates for making waffles and paninis.

Download This PDF Link: [Tefal SW852D Snack Collection Multi-Function Sandwich Maker Instruction Manual](#)

