



## Teesa TSA3011 Citrus Juicer With Handle Owner's Manual

[Home](#) » [teesa](#) » Teesa TSA3011 Citrus Juicer With Handle Owner's Manual 

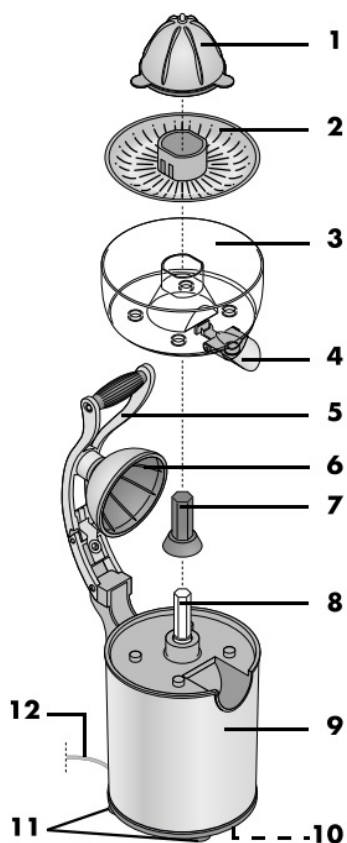
Teesa TSA3011 Citrus Juicer With Handle Owner's Manual



## Contents

- 1 Product Descriptions
- 2 SAFETY INSTRUCTIONS
- 3 BEFORE FIRST USE
- 4 ASSEMBLY
- 5 OPERATION
- 6 DISSASSEMBLY
- 7 CLEANING AND MAINTENANCE
- 8 TROUBLESHOOTING
- 9 SPECIFICATION
- 10 Correct Disposal of This Product
- 11 Documents / Resources
  - 11.1 References
- 12 Related Posts

## Product Descriptions



- 1. Cone
- 2. Filter
- 3. Juice container
- 4. Spout (with anti-drip mechanism)
- 5. Pressing handle
- 6. Fruit press
- 7. Cover of the drive axle
- 8. Drive axle
- 9. Motor unit

10. Cord storage
11. Anti-slip feet
12. Power cable

Thank you for purchasing this TEESA appliance. Please read this operation instruction carefully before use, and keep it for future use. Producer does not take responsibility for damages caused by inappropriate handling and use of the product.

## **SAFETY INSTRUCTIONS**

**In order to reduce the injuries or damages, follow basic safety precautions applied when using any electrical device, including the following:**

1. Read this instruction manual carefully, even if you are familiar with the appliance. Keep the manual for future reference.
2. Before connecting the device to power supply socket, make sure the voltage indicated on the appliance corresponds to the voltage in the power supply socket.
3. The appliance must be plugged into an earthed electrical socket. If you have to use an electrical extension lead, it must be earthed.
4. This appliance **MUST NOT** be supplied through an external switching device, such as a timer, or connected to a circuit that is regularly switched on and off by the utility, as it may lead to damage of the device.
5. Place the device on flat, stable surface. Do not use this appliance on a tilted or unstable table.
6. Clean this device in accordance to instructions listed in "Cleaning and Maintenance" section.
7. Clean the parts and attachments that come in contact with food before first use!
8. **ALWAYS** turn off the device and disconnect it from the mains supply:
  - if it's not operating correctly
  - if there's an uncommon voice when using
  - before disassembling the device
  - before cleaning
  - when not in use
9. When you disconnect the power cord of the device, grasp and pull the plug, not the cord/cable.
10. Keep the device out of the reach of children. Do not leave children unsupervised with the product.
11. This appliance may be used by children who are above 8 years old and by persons with reduced physical, sensory or mental capabilities, or lack of experience and knowledge, if they are supervised and guided by a person who is responsible for their safety in a cautious manner, and all the safety precautions are understood and followed. Children should not play with this device. Children should not perform cleaning and servicing of the device unsupervised.
12. Fixed power cable may only be replaced in an authorized service point.
13. Keep the device and its cord/cable away from heat, water, moisture, sharp edges and any other factor which may damage the appliance or its cord. Do not place the appliance in water or any liquid. Protect the motor unit from moisture, water drops and water splashes. The motor unit, the power cable and the mains plug must not be immersed in water or any other liquid.
14. Never place the device on hot surfaces (e.g. hot plates) or near to heat sources or open fire.
15. Do not use the product for purposes different from displayed in this operating manual.
16. This device is exclusively designed to extract juice from citrus fruits.

Do not use this appliance for hard fruits, as it poses the risk of the device' damage.

17. Do not leave the appliance unattended when it's working.
18. Producer of this product is not responsible for damages caused by inappropriate handle and use of the device.
19. Do not use the pressing handle to exert excessive pressure on the juicer cone.
20. Ensure that there are no foreign objects on the filter or in the device during operation.
21. Stop operation immediately, if the juicer cone is not turning or having difficulty turning.  
Pull out the mains plug and check if there is a foreign object in the device.
22. The device is fitted with non-slip feet. Because furniture can be coated with a wide variety of varnishes and plastics, and treated with various care products, the possibility cannot be excluded that some of these substances have components that may attack and soften the non-slip feet. If necessary, place a non-slip mat under the device.
23. ALWAYS disconnect the product from the mains supply when it is not in use.
24. DO NOT use this device if the cord or the plug is damaged, the appliance is broken or has previously been dropped.
25. Do not attempt to repair this appliance yourself. Only authorized and qualified personnel may repair this device. Never disassemble the motor body of the device.
26. Do not use unauthorized accessories.
27. Appliance for indoor and household use only. The device is constructed to process normal household quantities. Not for commercial use.
28. Do not move the appliance while it is operating.
29. Always securely clamp in place all parts before the motor is turned on.  
Do not disassemble while the device is operating.
30. Do not touch moving parts. Make sure the motor stops completely before disassembling.  
Do not touch the rotating parts with spoons or any other kitchen utensils. Keep long hair and loose clothing away from the rotating parts.
31. Some parts are dishwasher safe (cone/filter/juice container).
32. Always wait until the moving parts stop running, and then unplug the appliance before opening, disassembling or removing the parts.
33. Do not use for more than 10 minutes at a time, allow motor to cool before reusing.
34. Never touch any moving parts when the device is connected to power supply.
35. IMPORTANT: In order to ensure children's safety, please keep all packaging (plastic bags, boxes, etc.) out of their reach. Caution! Do not allow small children to play with the foil as there is a danger of suffocation!

## **BEFORE FIRST USE**

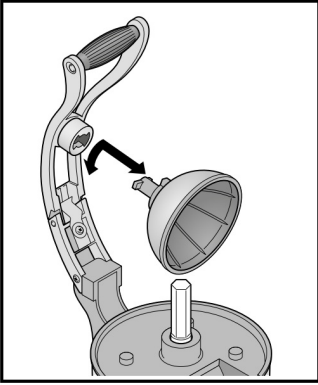
Wash the parts that will have contact with food before first use. Rinse thoroughly with warm water and allow to air dry. Never submerge the device motor unit in water or any other liquid.

## **ASSEMBLY**

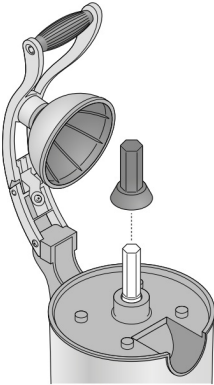
**IMPORTANT:** Plug the device into power mains only AFTER the device has been completely and correctly assembled.

1. Place the motor unit onto a level, dry, smooth, waterproof worktop.
2. Insert the fruit press into the opening at the pressing handle and turn it anticlockwise by approx. one quarter of

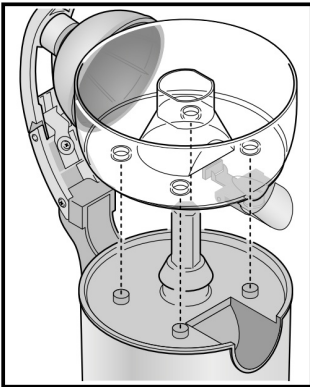
a revolution until it sits tight.



3. Place the cover on the drive axle.

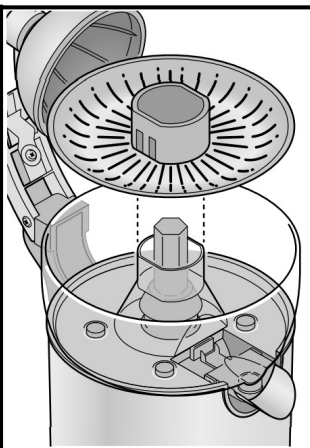


4. Place the juice container on the motor unit and press it firmly down. Ensure that the spout points forward and the four recesses on the underside of the juice container are positioned exactly on the short pins of the motor unit.

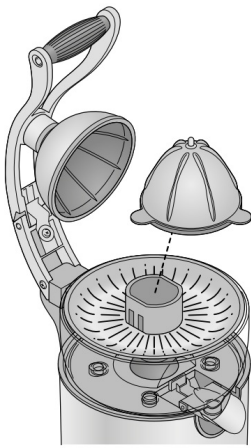


5. Place the filter into the juice container.

Ensure to fit the flat side of the central opening on the juice container.



6. Place the juicer cone on the cover of the drive axle.



## OPERATION

### WARNING!

- Ensure that there are no foreign objects on the filter or in the device (e.g. pits).
- Do not use the pressing handle to exert excessive pressure on the juicer cone.

### Preparing citrus fruits

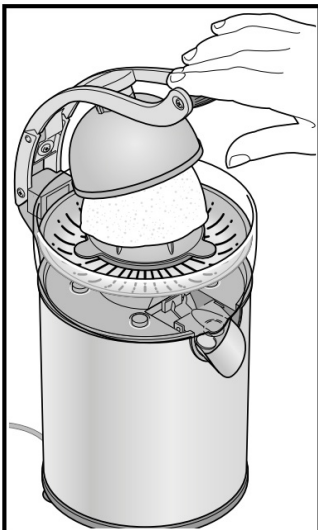
The citrus press is designed so that this can be used to juice citrus fruits of different sizes (e.g. limes, lemons, oranges). Unsuitable are large citrus fruits, which do not fit into the fruit press after being cut in half (e.g. grapefruits).

For an optimal juice yield, use the possibly ripest fruits containing more juice.

Cut the citrus fruits in half across to the fruit segments so that you receive a top and bottom half and all fruit segments are cut.

### Juicing citrus fruits

1. Connect the device to power supply mains socket.
2. Place a container (e.g. a glass) under the spout of the juice container.
3. Open the anti-drip spout.
4. Place one half of a citrus fruit on the juicer cone, without exerting pressure.
5. Press the pressing handle down. The juicer cone starts turning, and the juice flows out of the spout.



6. When the juice flow has almost come to a stop, lift the pressing handle and check the inside of the half of the

citrus fruit. Especially with larger fruits or if the half of a citrus fruit had been positioned at an angle, the fruit may still have a lot of non extracted juice. Continue to press the half of the citrus fruit after a turn.

7. As soon as you stop pressing on the pressing handle the device stops.
8. Lift the pressing handle and remove the pressed out half of the citrus fruit.
9. If you want to change the container in between or stop juicing, close the anti-drip spout at the outlet.
10. When the juicing is completed, disconnect the device from power mains.

#### NOTES:

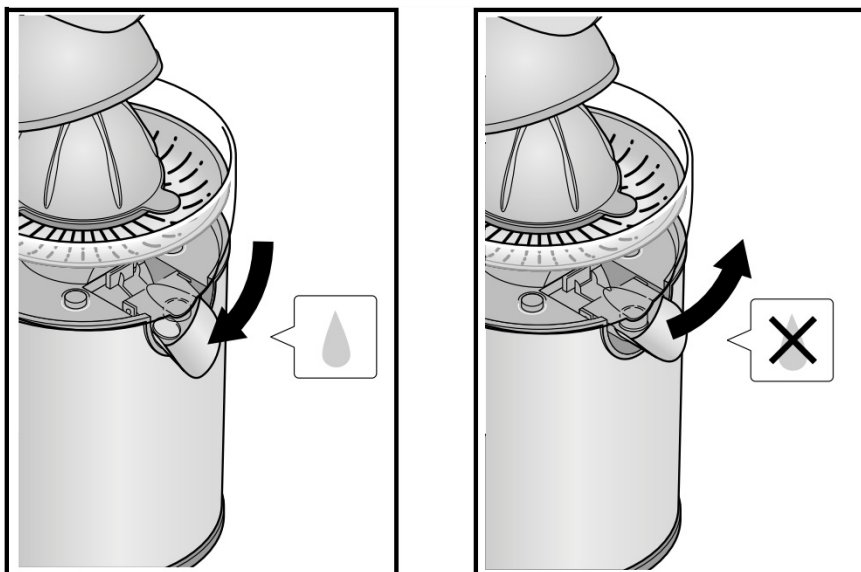
- Should the juicer cone stop turning, check if there are pips between the juicer cone and the filter, and remove them if necessary.
- If a lot of pulp and pips accumulated in the filter, disconnect the device from power supply and empty the filter.
- Clean the device as soon as possible after each use, so that the pulp does not dry onto the surfaces.

#### Anti-drip spout

The outlet of the juice container has an integrated anti-drip spout mechanism. If you want to remove or replace the container under the outlet, you can close the anti drip spout to prevent juice from dripping out.

**NOTE:** ensure that the anti-drip spout is open during juicing, so that the juice does not collect in the juice container.

- To close the anti-drip spout, gently press the spout upwards.
- To open the anti-drip spout, gently press the spout downwards.



#### DISSASSEMBLY

1. Close the anti-drip spout if necessary.
2. Turn the fruit press clockwise by approx. a quarter turn, remove it from the pressing handle and place it on the juicer cone.
3. Remove all accessories together from the motor unit, by lifting the juice container upwards – without dripping, you are able to transport all accessories to the sink where you disassemble and clean them.

#### CLEANING AND MAINTENANCE

- Clean all the parts that will come in the contact with food prior to first use of the device!
- Disconnect from the power supply socket before disassembling and cleaning.
- The motor unit, the power cable and the mains plug must not be immersed in water or any other liquid.
- **NOTE:** clean the device as soon as possible after each use, so that the pulp does not dry onto the surfaces.
- Removing pulp and pips: before starting the washing-up or putting the accessories in the dishwasher, remove pips and pulp.
- Do not use any sharp or abrasive cleaning agents.
- The following parts can be cleaned in the dishwasher or by hand: cone, filter, juice container.
- Parts that cannot be cleaned in a dishwasher should be wiped with soft, slightly damp cloth only (pressing handle, fruit press, cover of the drive axle, drive axle, motor unit).
- Pay special attention to the residues, which might be located in the anti drip spout at the outlet of the juice container.
- In case of stubborn stains use a little detergent and wipe over.
- Dry all parts carefully before reassembling the device and storing it.
- Keep the device out of the reach of children, even when storing.
- Store the device in cool, dry place.

## TROUBLESHOOTING

Problem	Possible solution
The cone stops turning	<ul style="list-style-type: none"> <li>• There might have been too much pressure exerted on the cone</li> <li>• Pips or other obstacles between the cone and the filter</li> </ul>
No juice leaves the spout	<ul style="list-style-type: none"> <li>• Is the anti-drip spout closed? Open if closed.</li> <li>• Did pulp or a small pip got stuck in the outlet? Remove the obstacle</li> </ul>

## SPECIFICATION

### Main features

- Automatic juicing
- Continuous flow
- Detachable parts for easy cleaning
- Dishwasher safe parts (cone/filter/juice container)
- Easy to clean
- Easy to assemble
- Anti-drip juice outlet



- Cord storage
- Anti-slip feet
- Transparent juice container
- BPA free

### Used materials

- Spout: Stainless steel
- Housing/cone/cone cover/filter: Stainless steel + ABS
- Handle: Aluminum
- Juice container: AS

### Technical data

- Capacity: 350 ml
- Speed: 114 rpm
- Motor: AC
- Noise level: < 78 dB
- Continuous working time: ≤ 10 minutes
- Power: 130 W
- Power supply: 220-240 V; 50/60 Hz
- Power cord length: 0,9 m

### Correct Disposal of This Product



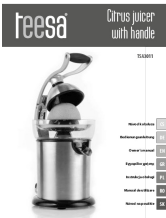
 (Waste Electrical & Electronic Equipment)



(Applicable in the European Union and other European countries with separate collection systems) This marking shown on the product or its literature, indicates that it should not be disposed with other household wastes at the end of its working life. To prevent possible harm to the environment or human health from uncontrolled waste disposal, please separate this from other types of wastes and recycle it responsibly to promote the sustainable reuse of material resources. Household users should contact either the retailer where they purchased this product, or their local government office, for details of where and how they can take this item for environmentally safe recycling. Business users should contact their supplier and check the terms and conditions of the purchase contract. This product should not be mixed with other commercial wastes for disposal.

**teesa®**

## Documents / Resources

 <p>The image shows a Teesa TSA3011 manual citrus juicer. It has a stainless steel body with a black handle and a black base. The juicer is shown from a side profile, highlighting its compact design and the handle mechanism. To the right of the juicer, there is a vertical list of parts with corresponding numbers in small boxes: 1. Main body, 2. Juice container, 3. Juice spout, 4. Citrus holder, 5. Citrus holder cap, 6. Citrus holder cap gasket, 7. Citrus holder cap gasket gasket, 8. Citrus holder cap gasket gasket gasket, 9. Citrus holder cap gasket gasket gasket gasket, 10. Citrus holder cap gasket gasket gasket gasket gasket.</p>	<p><a href="#">Teesa TSA3011 Citrus Juicer With Handle</a> [pdf] Owner's Manual TSA3011 Citrus Juicer With Handle, TSA3011, Citrus Juicer With Handle, Juicer With Handle, Handle</p>
--	---

## References

- [Teesa - małe AGD dla Ciebie, dla domu](#)