

# TeeHO TE002 Keypad Deadbolt with Fingerprint Instructions

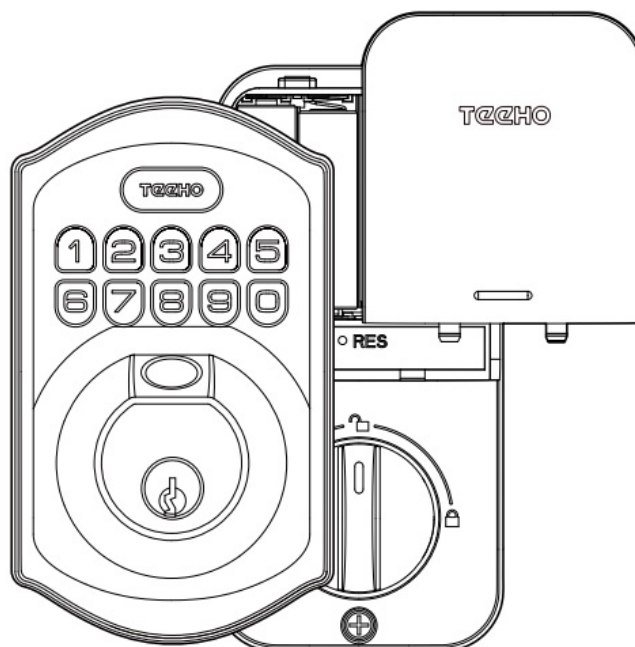
[Home](#) » [TeeHO](#) » TeeHO TE002 Keypad Deadbolt with Fingerprint Instructions 

## Contents

- [1 TeeHO TE002 Keypad Deadbolt with Fingerprint](#)
- [2 Parts illustrations](#)
- [3 PRODUCT OVERVIEW](#)
- [4 How to use?](#)
- [5 Lock the door from outside](#)
  - [5.1 Lock the door from inside](#)
- [6 QUICK SETUP](#)
- [7 Information and safety warnings](#)
- [8 Definitions](#)
- [9 Factory default settings](#)
- [10 Restore factory default settings](#)
- [11 Troubleshooting](#)
- [12 Documents / Resources](#)
- [13 Related Posts](#)

# TEEHO

**TeeHO TE002 Keypad Deadbolt with Fingerprint**



## Parts illustrations

The default master code is 12345678. It's required that you change it to a code of your own before programming.

- ITEM**

Battery Using only new and non-rechagerable Alkaline betteries for the best results.)

- SPECIFICATIONS**

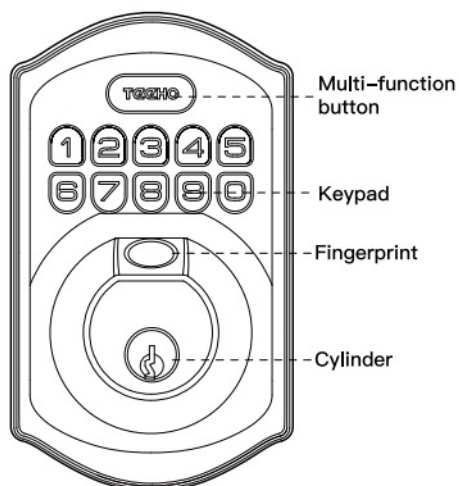
AA alkaline battery ×4 (Operation voltage:4.6~6.OV)

- REMARKS**

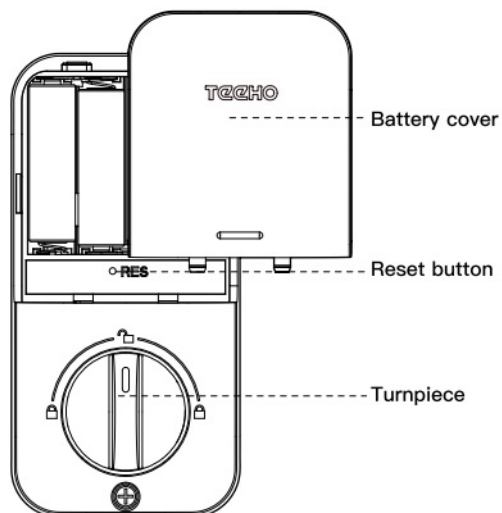
Last up to one year (10 times open/close per day)

## PRODUCT OVERVIEW

Exterior assembly

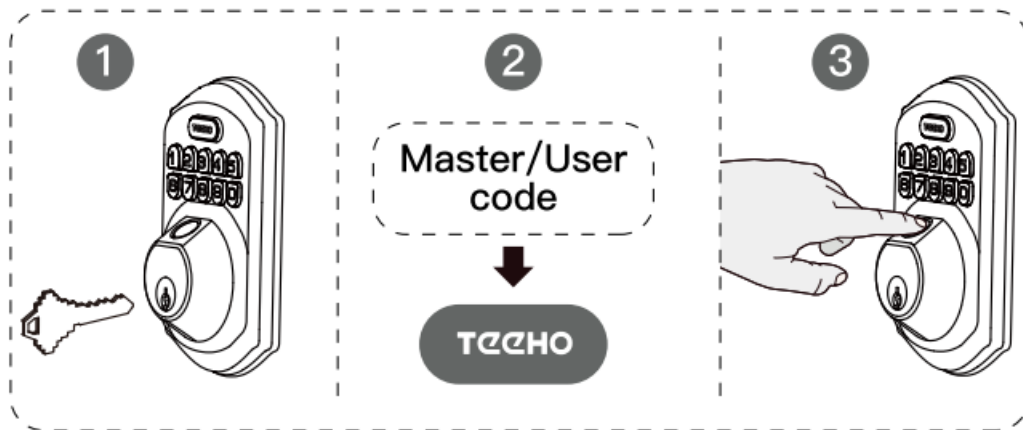


interior assembly



## How to use?

- **Unlock the door from outside**



- **Unlock the door from inside**

Rotate the turn piece to unlock position.



## Lock the door from outside

- **Auto re-lock mode**

In auto re-lock mode, the bolt will extend out automatically in 30 seconds after unlocking.\

- **Manual mode**

Press any of the buttons on keypad for 2 seconds.



## Lock the door from inside

- **Auto re-lock mode**

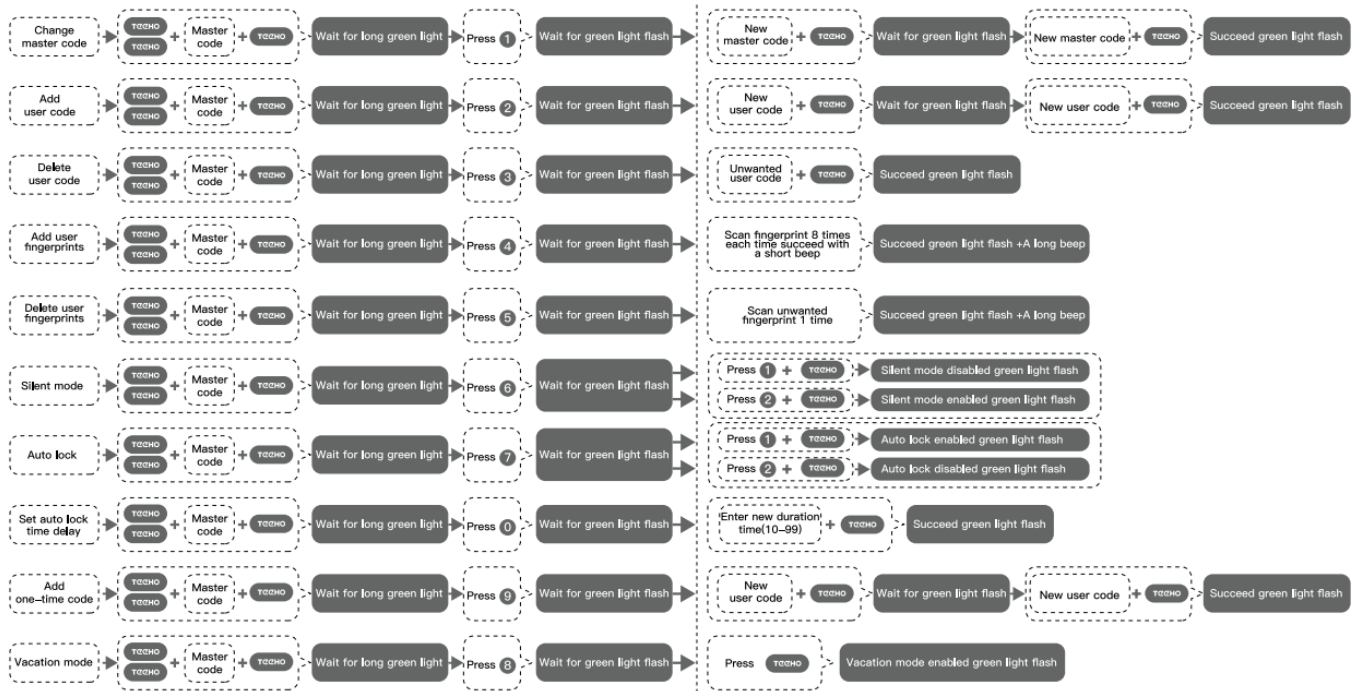
In auto re-lock mode, the bolt will extend out automatically in 30 seconds after unlocking.

- **Manual mode**

Rotate the turn piece to lock position.



## QUICK SETUP

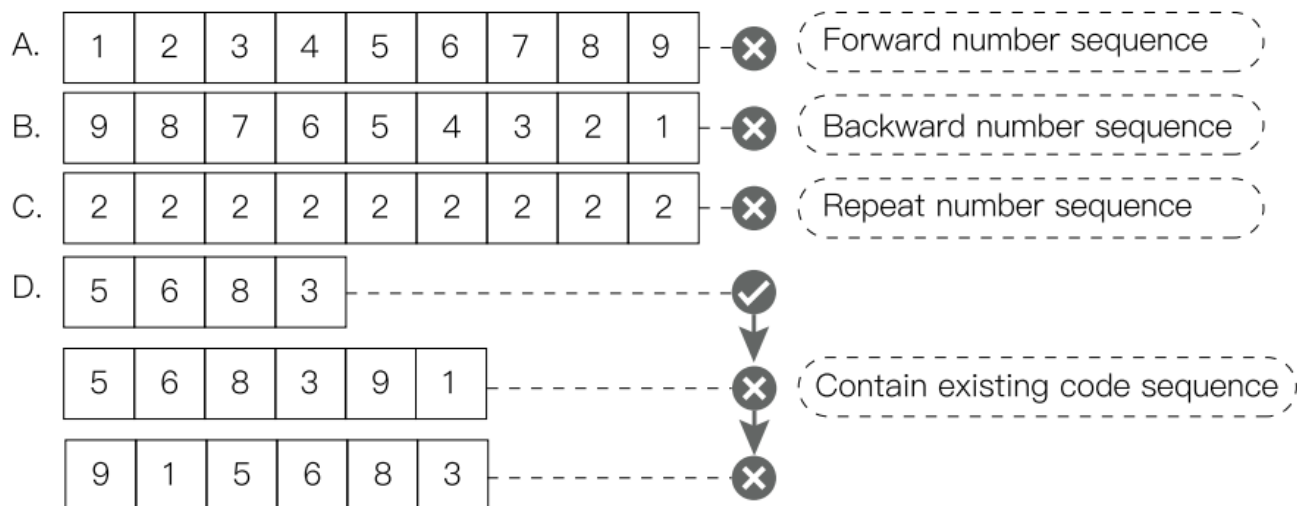


## Information and safety warnings

Do not load batteries until lock is completely installed.

- Protect your user codes and master code.
- Restrict access to your lock's interior assembly and routinely check your settings to ensure they have not been altered without your knowledge.
- This lockset is designed to provide the highest standard of product quality and performance. Care should be taken to ensure a long-lasting finish. When cleaning is required use a soft and damp cloth. Using lacquer thinner, caustic soaps, abrasive cleaners or polishes could damage the coating and result in tarnishing.

1. Master PIN Code (4~10 digits): The default master pin code is "12345678", It's required that you change it to a code of your own before programming.
2. User PIN Code (4~10 digits): A total of 20 user codes (and one temporary one-time user code) may be programmed.
3. Both master and user PIN codes don't support the following combination of numbers.



## Definitions

### 1. Master Code

- Required for programming and feature settings. Master code can be used to unlock the door under vacation mode. The default master code needs to be changed before programming.
- Property owner/manager should keep this information confidential.

### 2. Auto Lock

Automatically locks the deadbolt 30 seconds after unlocking. This feature is off by default. You can set the Auto Lock time delay between 10 and 99 seconds.

### 3. Wrong Entry Limit

After 10 unsuccessful attempts at entering a invalid PIN code, the unit will shut down for 3 minutes.

### 4. Silent Mode

The beep sounds when pressing keypad can be muted. But you will still hear low battery and system alerts.

### 5. Vacation Mode

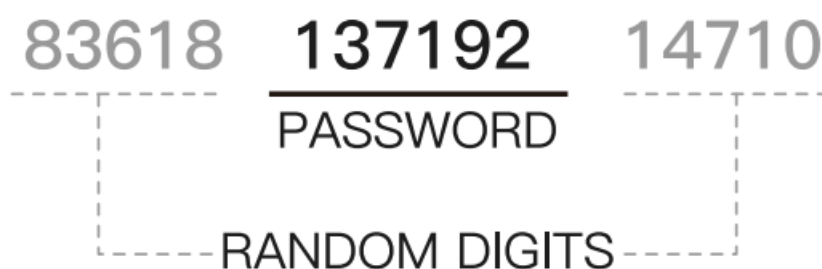
This is a security feature for you when you are leaving your home for vacation or long trip. Enabling vacation mode will restrict all user codes until master code is entered on keypad. If the lock is unlocked by thumb turn, the lock will sound an alarm.

### 6. One Time User Code

This code can only be used once and is automatically deleted when used.

### 7. Unlock with Fake Code

User can prevent pin code exposure from strangers by entering random digits before or after pin code.



## Factory default settings

| SETTINGS               | FACTORY DEFAULT |
|------------------------|-----------------|
| Master code            | 12345678        |
| Auto lock              | Disabled        |
| Silent mode            | Disabled        |
| Wrong code entry limit | 10 times        |
| Shutdown time          | 3 mins          |
| Vacation mode          | Disabled        |

## Restore factory default settings

This procedure will delete all user codes which associated with the lock.

1. Keep the door opening and unlocking;
2. Press and hold the reset button, taking out one battery and then place it back at the same time;
3. Keep holding the reset button for 3 seconds until you hear the sound of "BEEP"


## Troubleshooting

### Installation

| Questions  | Answers  |
|--|--|
| The latch does not operate correctly after installation. | <input type="checkbox"/> Make sure the backset on the latch is set to the proper length. Refer to Installation Instructions<br><input type="checkbox"/> Make sure prior to installation latch bolt is retracted and key is not in lockset when installing the deadbolt. Refer to Installation Instructions<br><input type="checkbox"/> Please restore to factory setting and enter the default Master Code to set up the lock. Refer to Programming Instructions |
| Feel a bump while turning the thumb turn or the key?     | <input type="checkbox"/> Check if the length of mounting screws is appropriate.<br><input type="checkbox"/> Check if the turn piece is in vertical position.   |
| Fail to set up the lock.                                 | <input type="checkbox"/> Please make sure the lock is installed correctly.<br><input type="checkbox"/> Please install fresh batteries and make sure the cable is connected correctly.<br><input type="checkbox"/> After installation, restore the lock to complete the bolt direction setting.   |

### Operation

| Questions                                   | Answers   |
|---|---|
| Battery indicator keeps flashing.           | <input type="checkbox"/> The batteries are getting low, please replace with four new batteries for the best performance (alkaline batteries only).  |
| Keypad not responding.                      | <input type="checkbox"/> Make sure the batteries are installed properly.<br><input type="checkbox"/> The batteries are getting low if the battery indicator keeps flashing. Please replace with four new batteries for the best performance (alkaline batteries only).<br><input type="checkbox"/> Make sure the cable is well-connected to the port, and was not damaged during installation.<br><input type="checkbox"/> Please make sure the lock has been set up and complete the bolt direction determination. |
| Master Code can not be changed.             | <input type="checkbox"/> Please refer to Programming Instructions to restore factory settings and reprogram all codes.  |
| What should I do if wrong code was entered? | <input type="checkbox"/> Press <b>TECHO</b> button once and continue to input code according to regular procedures.   |
| I forgot my Master Codes.                   | <input type="checkbox"/> Perform a reset in order to erase all passcodes. Once the reset is complete, all passcodes will be erased and the Master code will return to the default master code 12345678.   |
| Can not add a new User Code.                | <input type="checkbox"/> Make sure the whole code entering process is completed within 10 seconds, otherwise the unit will time out.<br><input type="checkbox"/> Make sure the Master Code has been entered correctly.<br><input type="checkbox"/> The new User Code will not be accepted when the capacity is full. Try to delete any or some existing User Codes and then add new one(s) again. A User Code must be at least 4 to 10 digits.  |
| “Auto lock” does not function.              | <input type="checkbox"/> The batteries are low on power if the battery indicator keeps flashing. Please replace with four new batteries for the best performance (alkaline batteries only).<br><input type="checkbox"/> Please refer to Programming Instructions to enable the Auto-Lock function.  |

|   |   |
|---|---|
| Lockset is not able to unlock / lock by keypad.   | <input type="checkbox"/> Make sure you have entered the correct User Code.<br><input type="checkbox"/> The battery is low if the battery indicator light keeps flashing. Please replace with four new batteries.<br><input type="checkbox"/> Make sure the cable is firmly connected.<br><input type="checkbox"/> Check the cable for any damage that may have occurred during installation.<br><input type="checkbox"/> Make sure the batteries are properly installed. (Alkaline batteries only.)<br><input type="checkbox"/> Check the strike plate to make sure it is properly aligned and clear so the bolt can freely move in the hole. |
| Lockset is unable to reset.   | <input type="checkbox"/> Please refer to Programming Instructions to restore factory settings and reprogram all codes.<br><input type="checkbox"/> The battery is low if the battery indicator light keeps flashing. Please replace with four new batteries.  |
| How to operate the lockset in darkness?   | <input type="checkbox"/> Press any button to activate the lockset back light.   |
| The red indicator is still on after setting is completed.   | <input type="checkbox"/> Check if you entered correct user codes.<br><input type="checkbox"/> Re-install the batteries.   |
| The lockset locks when I enter my code and unlocks when I press the  . | <input type="checkbox"/> Un-install the interior and exterior assemblies.<br>Before re-installation, please follow these guidelines: Refer to Installation Instructions<br>1) Make sure the bolt is in the retracted position.<br>2) Do not have any key in the cylinder during installation.<br>3) Make sure the turn piece is inserted horizontally.<br><input type="checkbox"/> Reset the unit to factory settings and reprogram the Master Code and User Codes.   |
| I cannot remove my key unless it is in the locked position.   | <input type="checkbox"/> Un-install the interior and exterior assemblies.<br>Before re-installation, please follow these guidelines: Refer to Installation Instructions<br>1) Make sure the bolt is in the retracted position.<br>2) Do not have any key in lock cylinder.<br>3) Make sure the turn piece is inserted horizontally.   |

If the lock appears to be damaged or does not operate properly, please contact customer service for further assistance.

## Documents / Resources

|   |  |
|---|--|
|  | <a href="#">TeeHO TE002 Keypad Deadbolt with Fingerprint</a> [pdf] Instructions<br>TE002 Keypad Deadbolt with Fingerprint, TE002, Keypad Deadbolt with Fingerprint, Deadbolt with Fingerprint, Fingerprint |
|---|--|