

TeeHO TE001K Keypad Deadbolt Set Instruction Manual

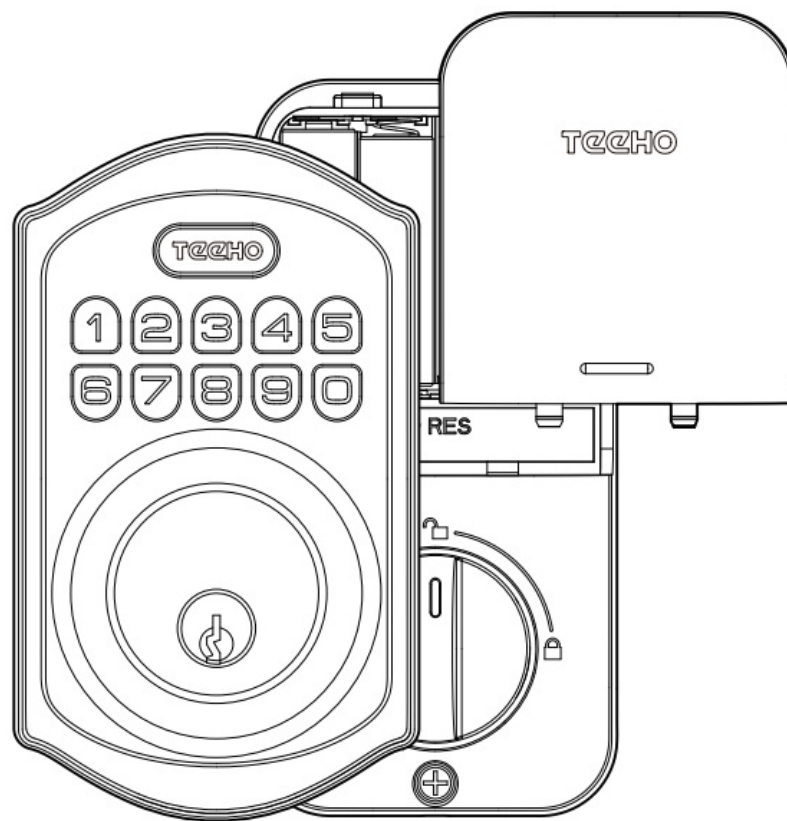
[Home](#) » [TeeHO](#) » TeeHO TE001K Keypad Deadbolt Set Instruction Manual 

teeHO

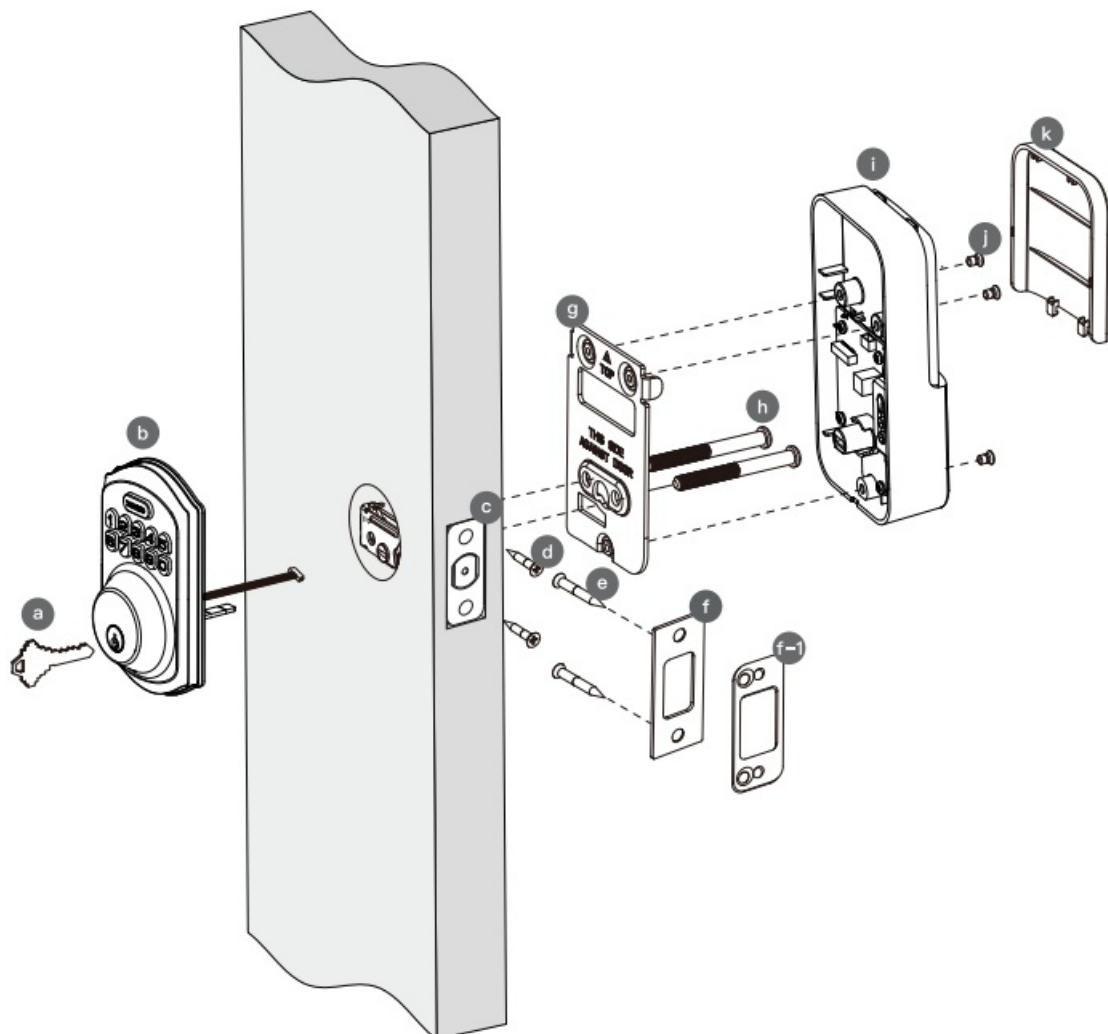
Contents

- 1 TeeHO TE001K Keypad Deadbolt Set
- 2 Parts List
- 3 Prepare the door and check dimensions
- 4 Choose faceplate
- 5 Install latch and deadbolt
- 6 Parts identification
- 7 Install exterior assembly
- 8 Install interior assembly
- 9 Detect left/right hand door installation
- 10 Installation Instructions of Knob
- 11 Parts list
- 12 Prepare the door and check dimensions
- 13 Latch backset adjustment
- 14 Install latch and strike
- 15 Install front and rear knob
- 16 Test the knob
- 17 Documents / Resources
- 18 Related Posts

TeeHO TE001K Keypad Deadbolt Set

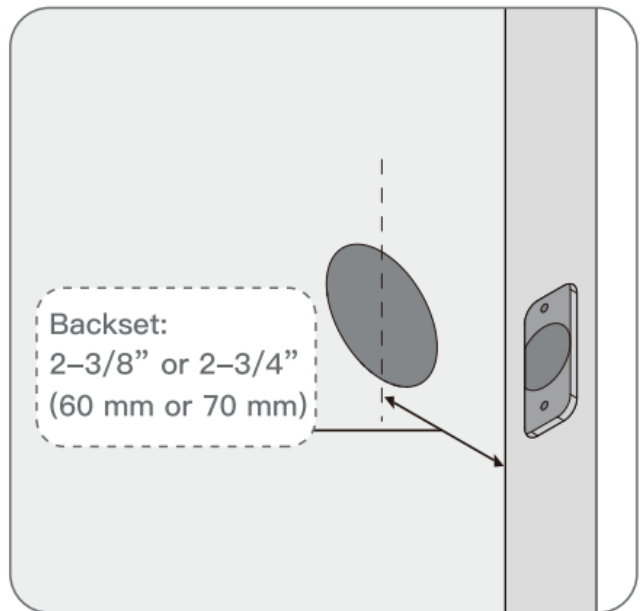
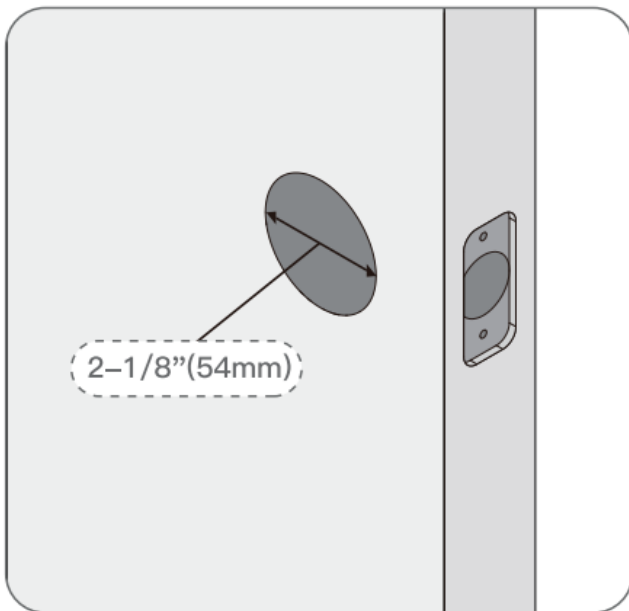


Parts List

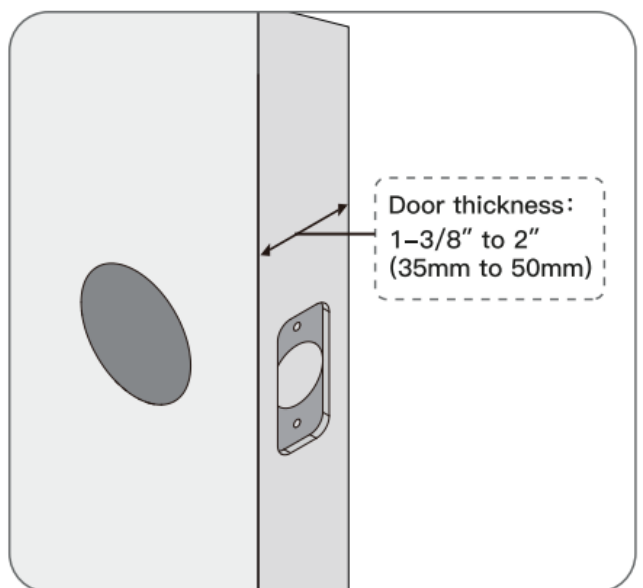
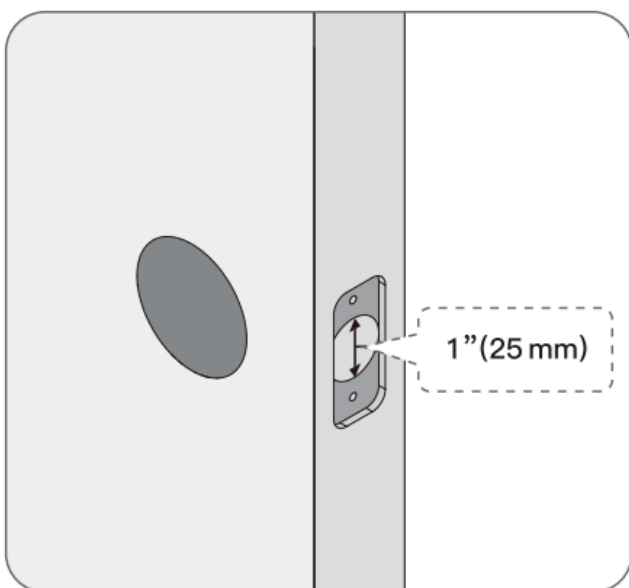


Prepare the door and check dimensions

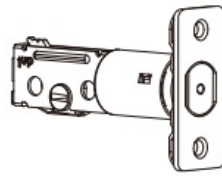
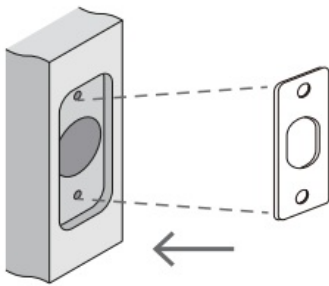
1. Measure to confirm that the hole in the door is $2\frac{1}{8}$ " (54mm),
2. Measure to confirm that the backset is either $2\frac{3}{8}$ " or $2\frac{3}{4}$ " (80 or 70mm),



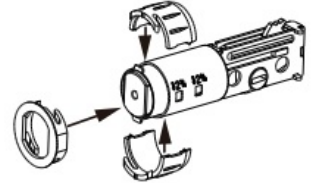
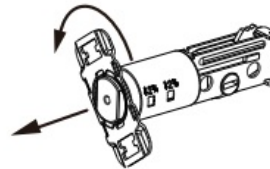
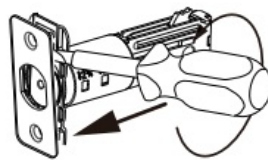
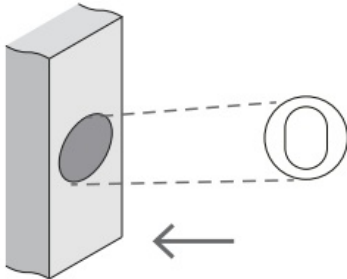
3. Measure to confirm that the hole in the door is 1" (25mm).
4. Measure to confirm that door thickness is between $1\frac{3}{8}$ " and 2" (35mm to 50mm).



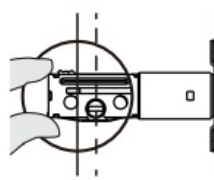
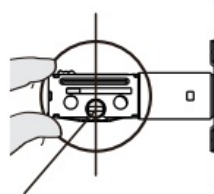
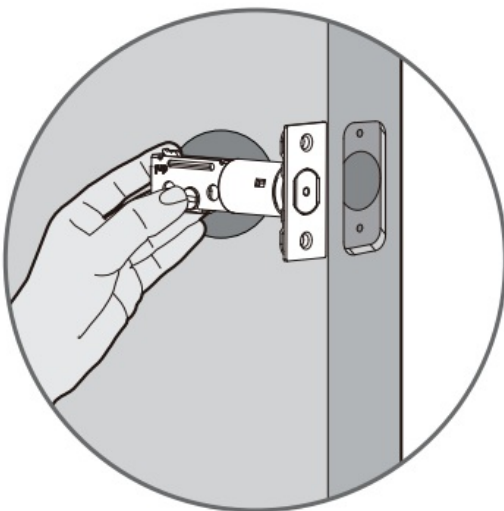
Choose faceplate



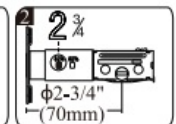
OR



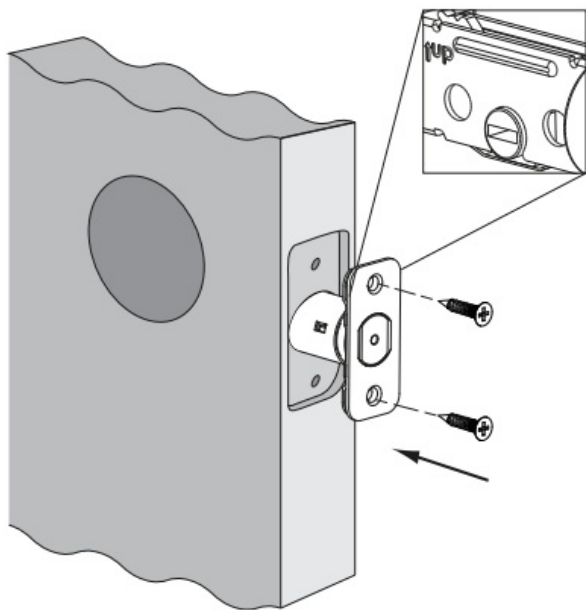
Is the slotted hole centered in the door hole?



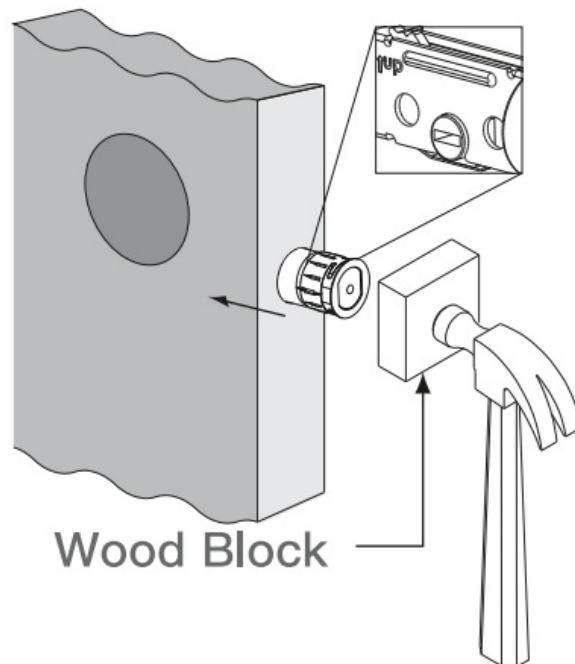
Rotate and pull the latch as shown to extend latch.



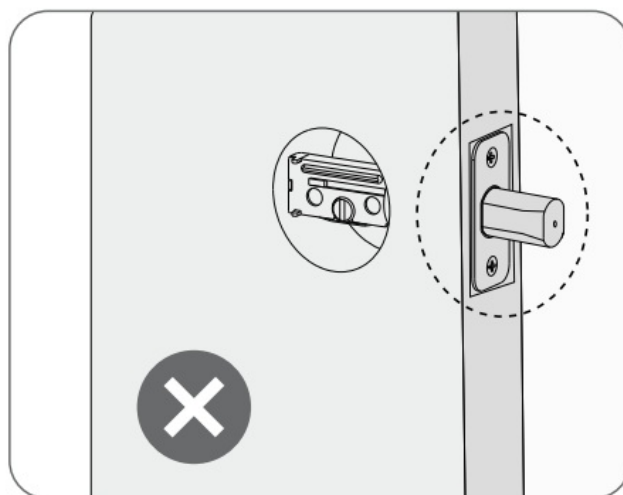
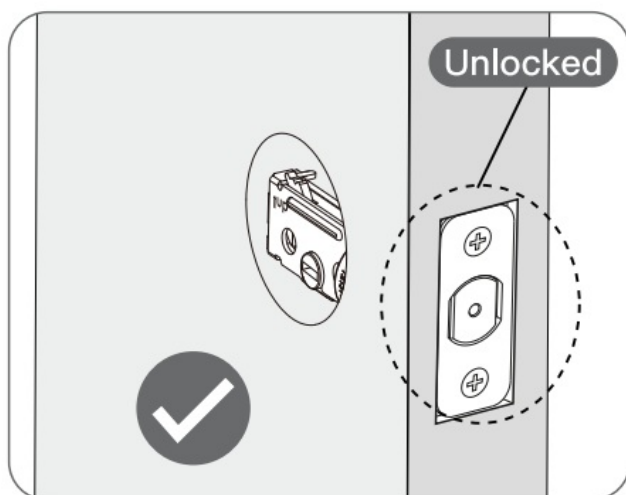
Install latch and deadbolt

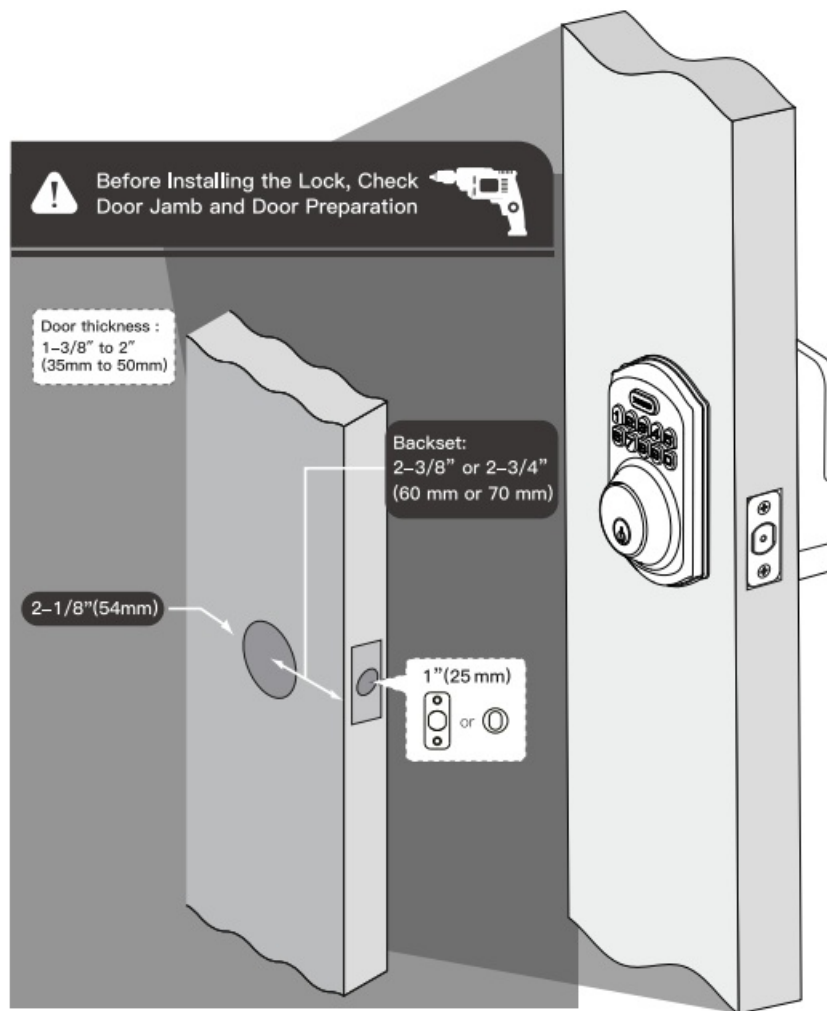


OR

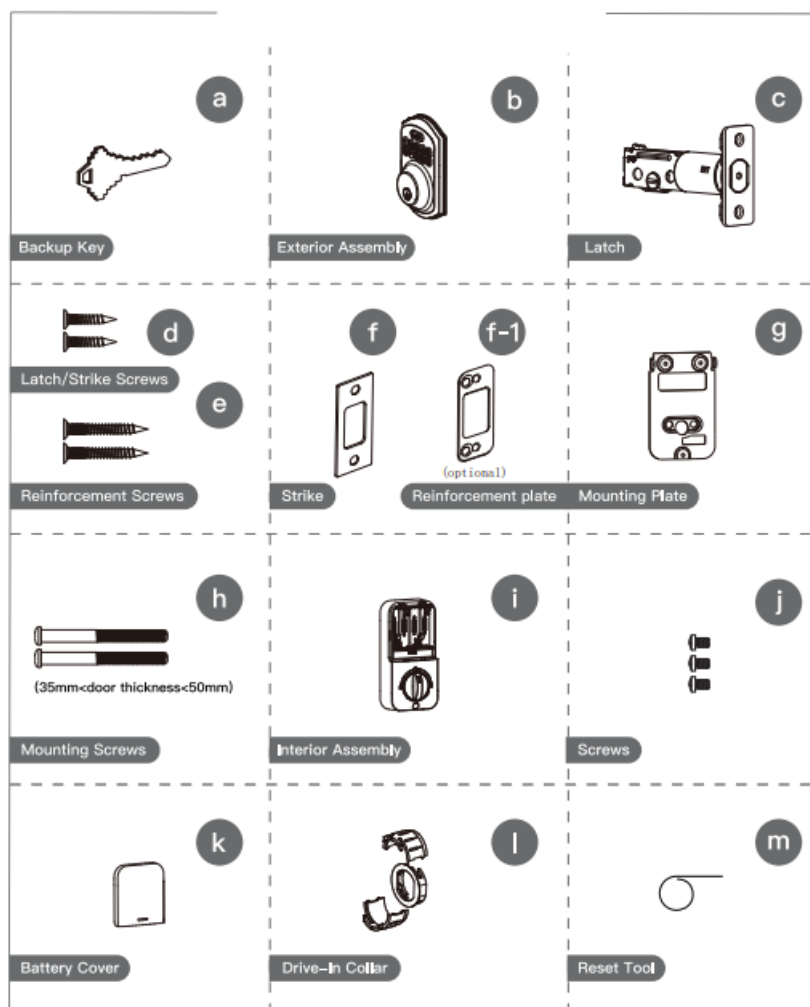


IMPORTANT: Keep the latch in unlocked position before installation.



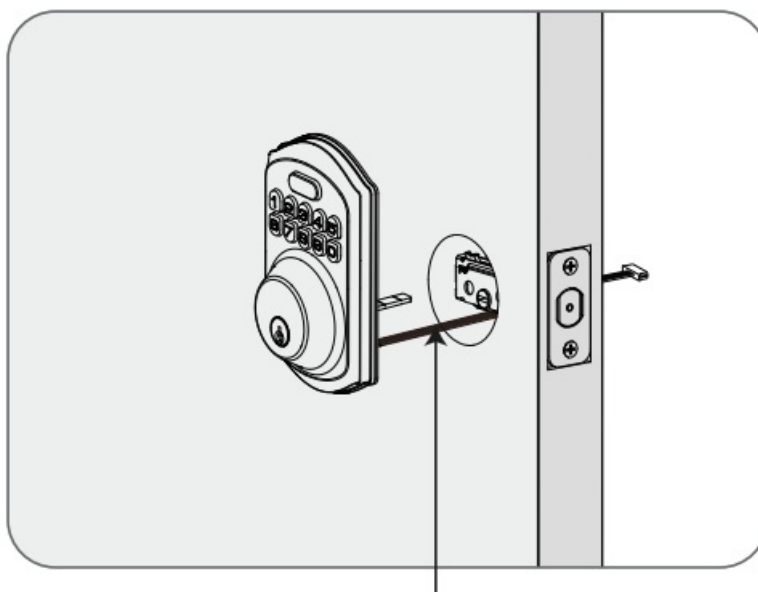


Parts identification

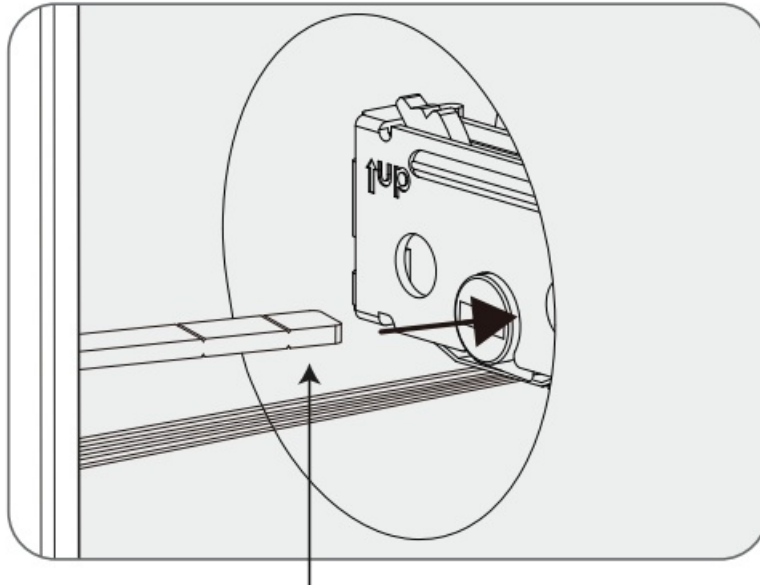


Install exterior assembly

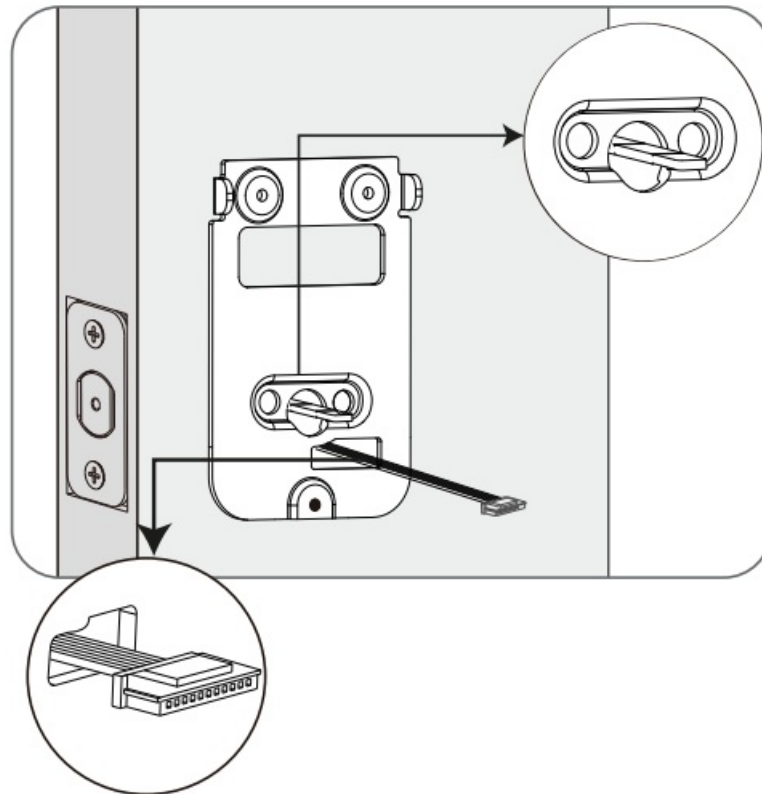
1. Route the cable below the latch.



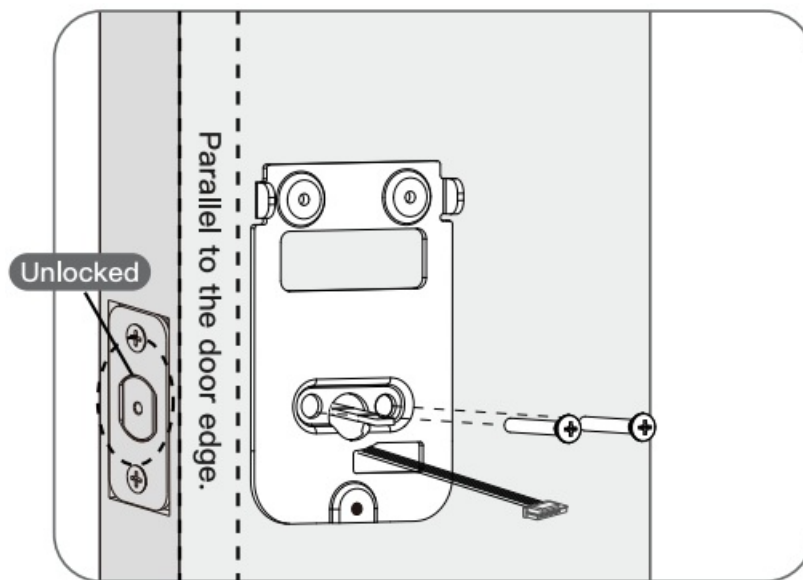
2. **IMPORTANT:** Bolt must be in unlock position.
Note horizontal orientation of torque blade.



3. Route the cable through the hole in the mounting plate.



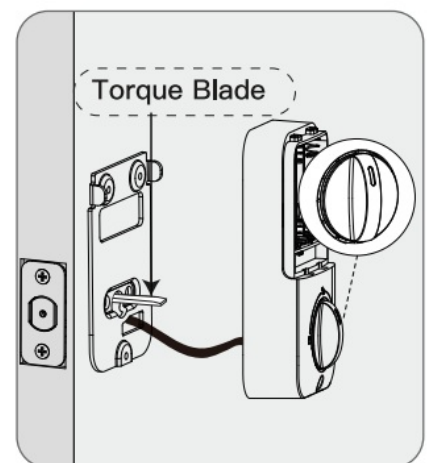
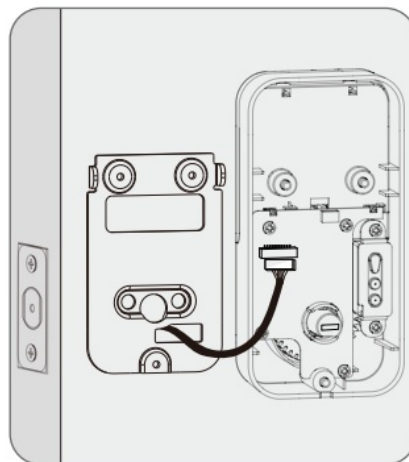
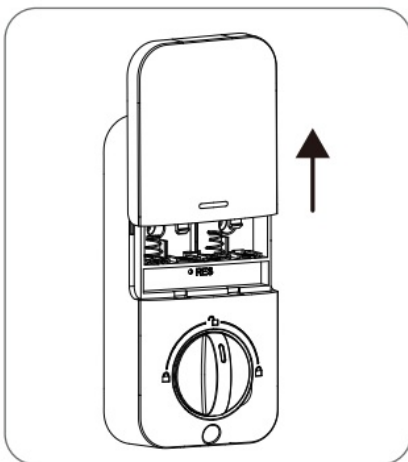
4. Secure the mounting plate with the supplied screws.



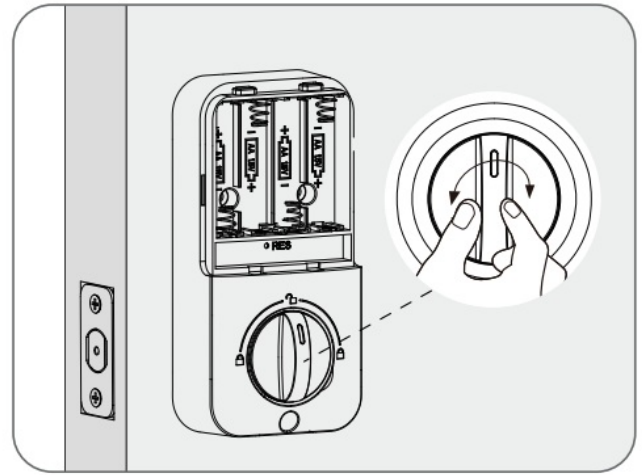
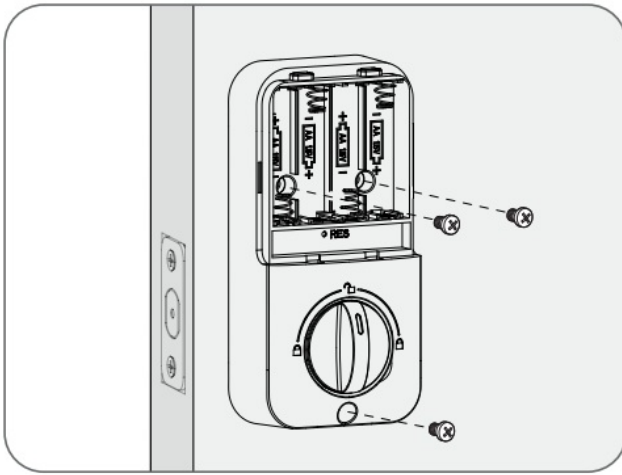
Install interior assembly

Do not load batteries until lock is completely installed.

1. Remove the battery cover.
2. Connect the cable and ensure
3. Rotate the Thumb turn in vertical) tight cable connection. position and insert the horizontal orientation of torque blade into the interior assembly lock switch.



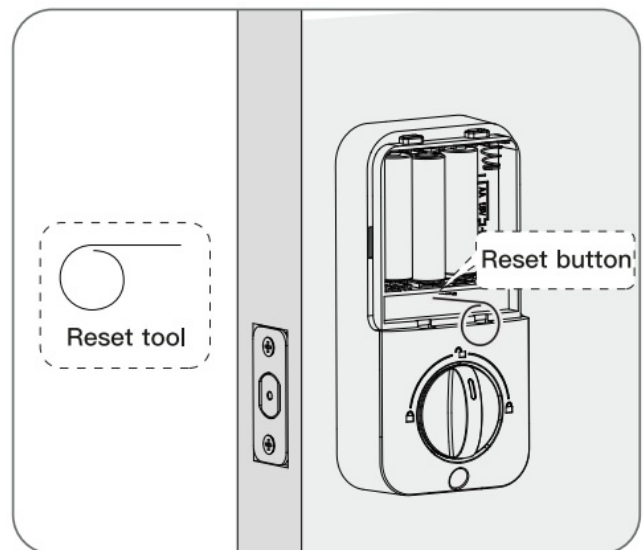
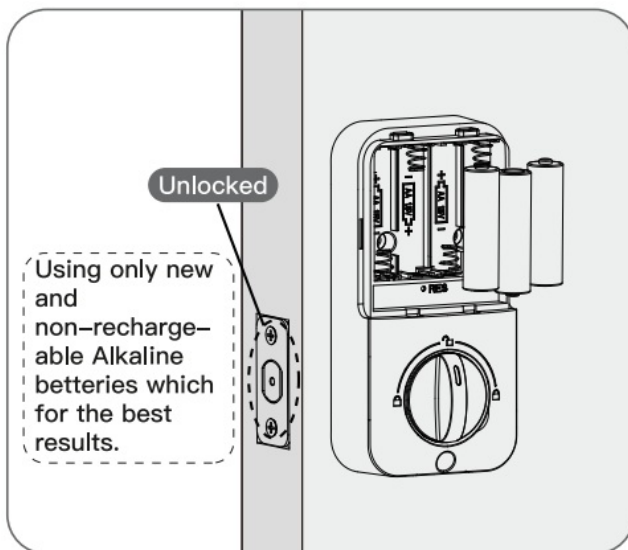
4. Secure the interior assembly with the supplied screws.
5. Test the lock by rotating the thumb turn to see if the bolt can be extended and retracted smoothly.



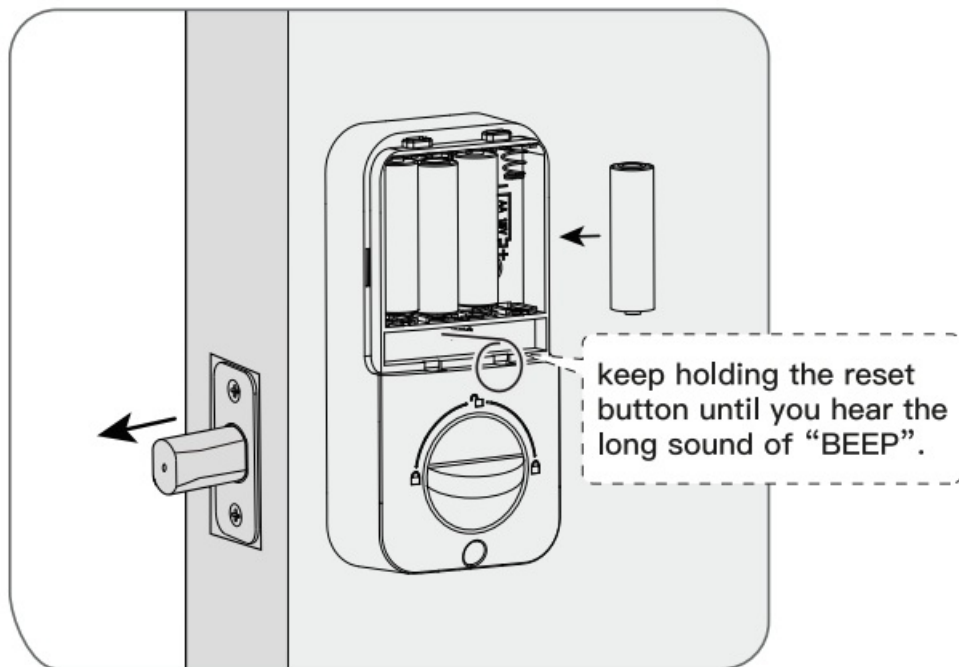
Detect left/right hand door installation

IMPORTANT: This step is required and crucial for the lock after installation!

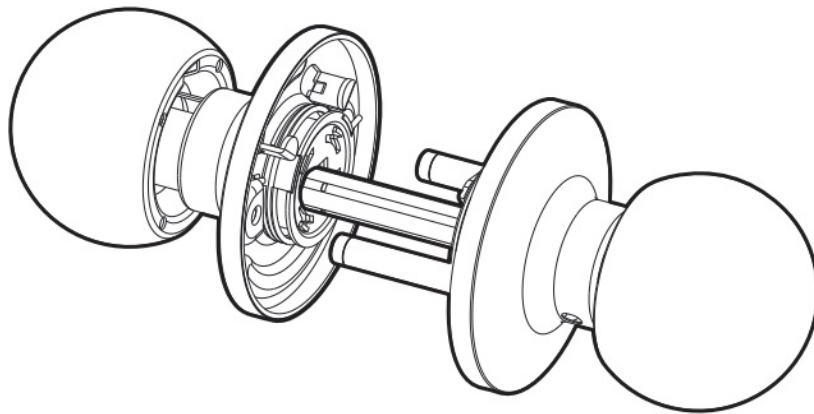
1. While the door is open and unlock, load 3AA batteries into the interior assembly.
2. Press and hold the reset button on the interior assembly using the reset tool provided in package.



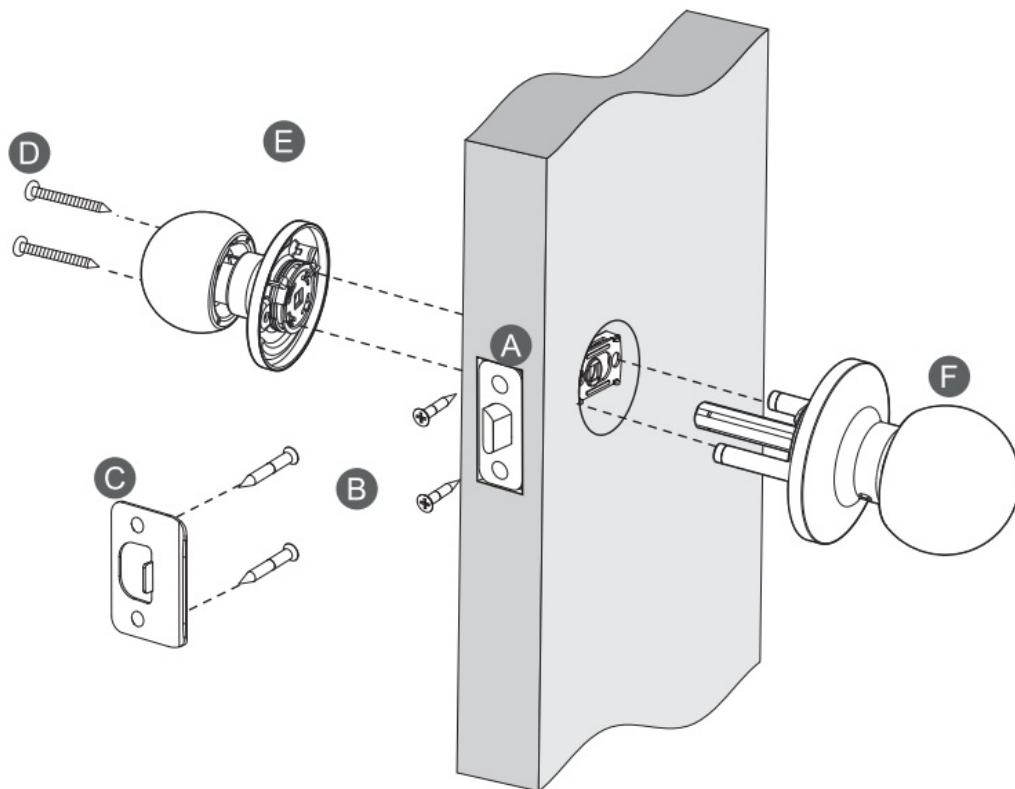
3. Keep holding the reset button, and load the last battery. Hold the reset button until you hear the long sound of "BEEP". The lock will automatically go into locking position. This is for the smart lock to memorize the orientation of the door.

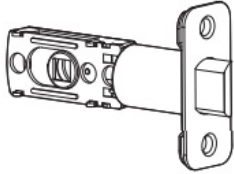
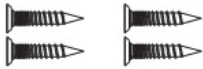

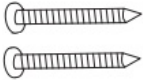
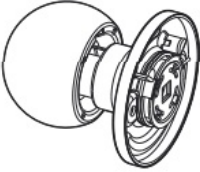
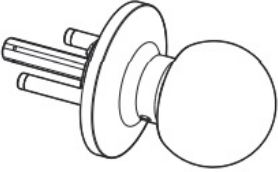


Installation Instructions of Knob



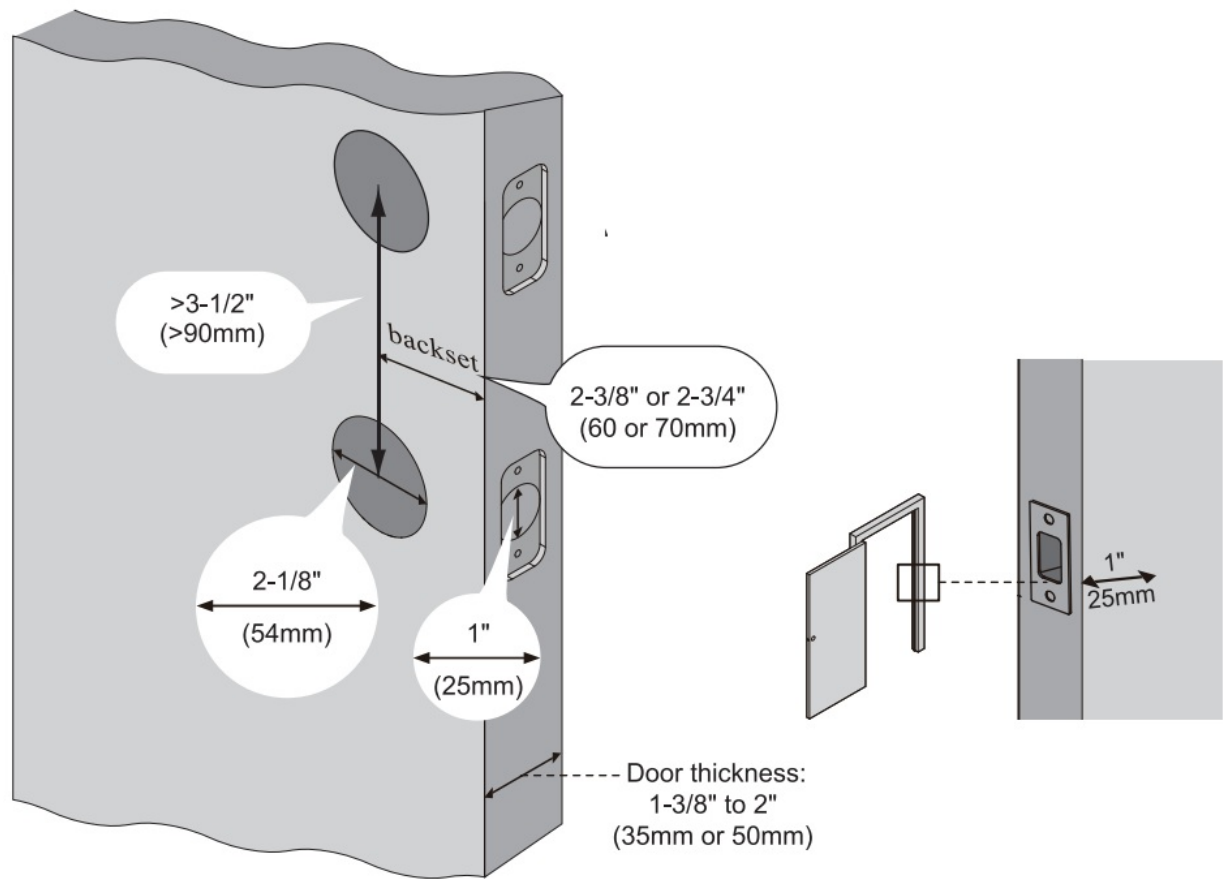
Parts list



A Latch x1 	B Latch & Strike screws x4 	C Strike x1 
D Mounting Screw x2 	E Rear Knob x1 	F Front Knob x1 

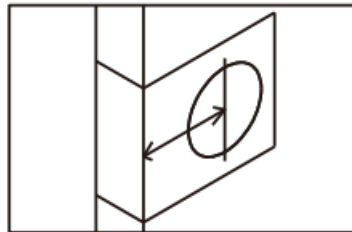
Prepare the door and check dimensions

If your door already has the holes shown in the picture below, proceed to the next step, if your door does not have holes, use the mounting template to drill a new hole.

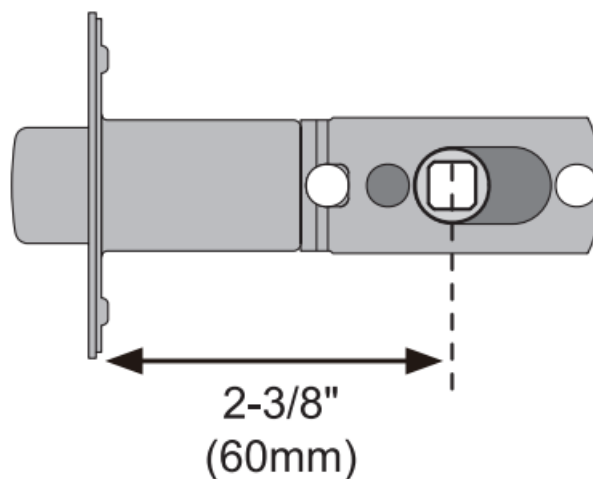


Latch backset adjustment

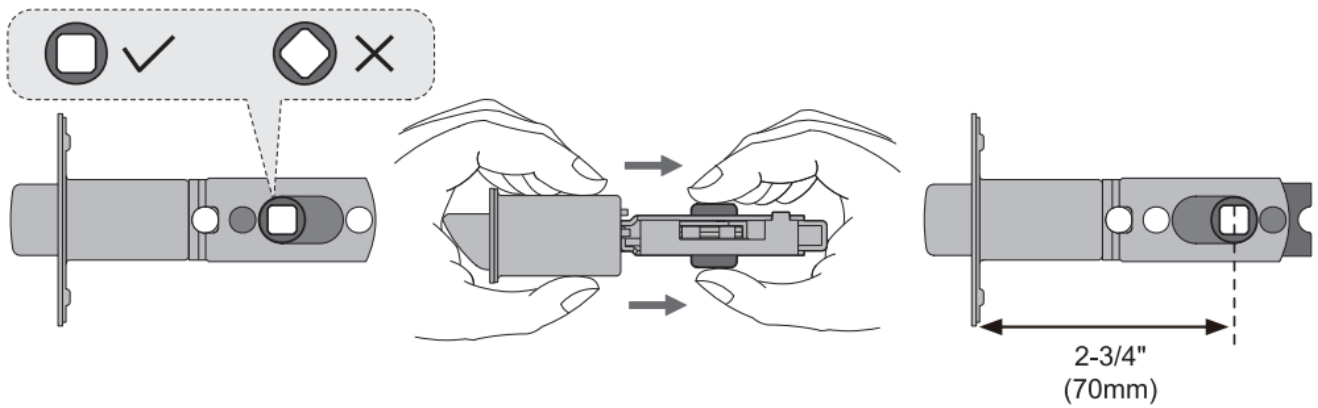
Backset is the distance from the door edge to the center of the hole in the door. The latch is provided with adjustable design which can fit either 2-3/8" (60mm) or 2-3/4" (70mm) backset.



- A. If the backset of your door is 2-3/8" (60mm), no need to adjust the latch.



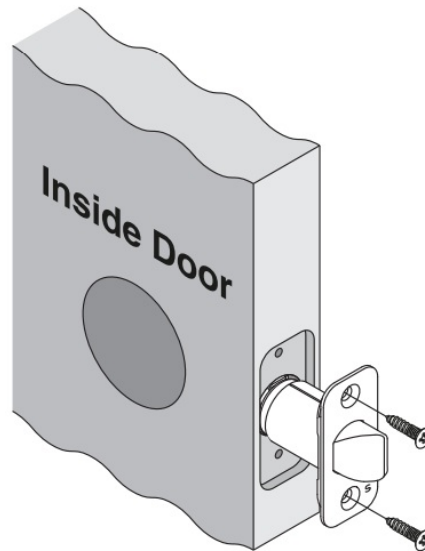
- B. If the backset of your door is 2-3/4" (70mm), please adjust the latch.



Install latch and strike

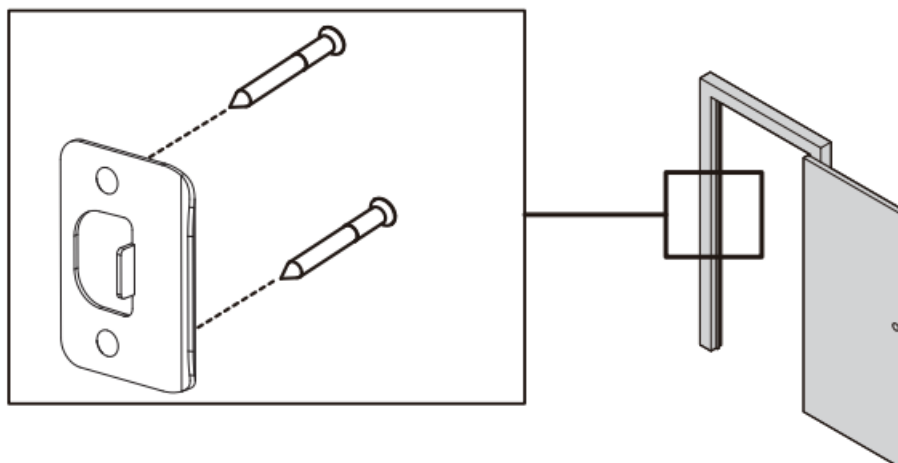
- **&IMPORTANT:**

The latch should be aligned with the chiseled properly.

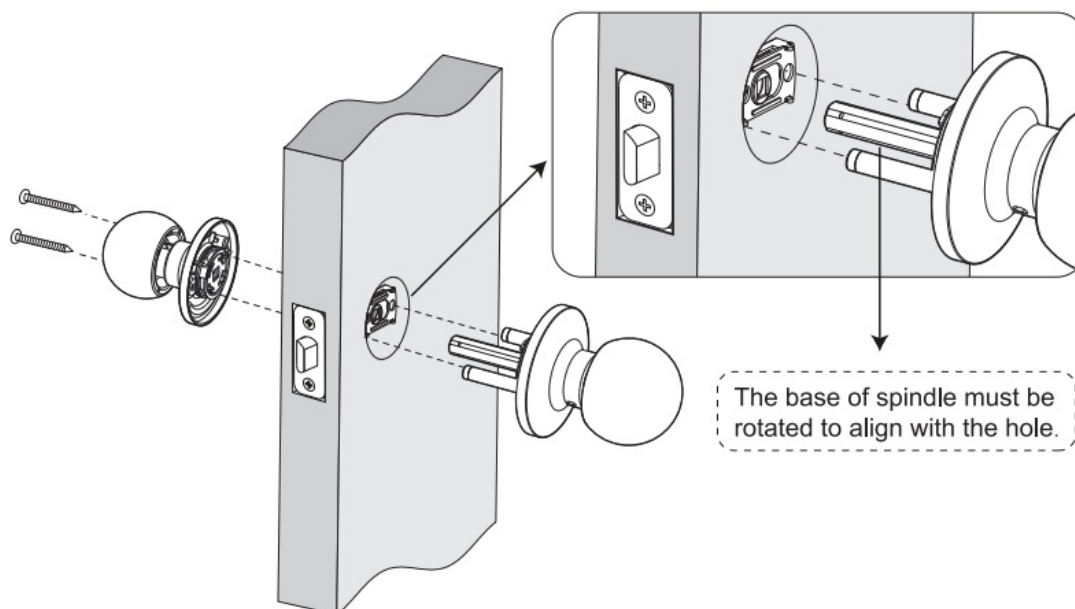


- **&IMPORTANT:**

Make sure the hole in door frame is drilled a minimum of 1" (25mm) depth.

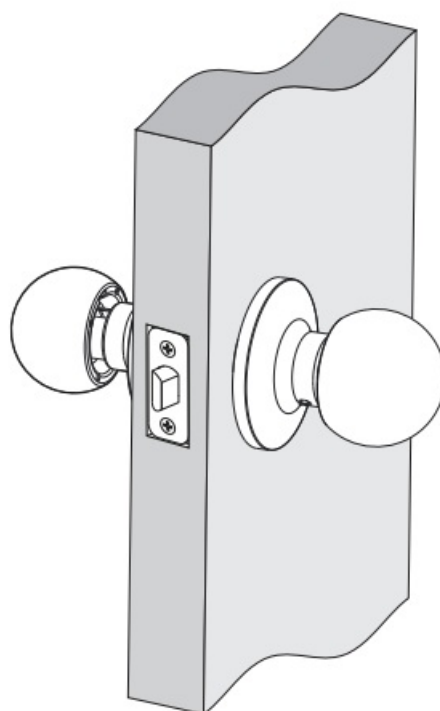


Install front and rear knob





Test the knob

Keep the door open, checking out front and rear lever to test if it works smoothly.



Documents / Resources

	<p>TeeHO TE001K Keypad Deadbolt Set [pdf] Instruction Manual TE001K Keypad Deadbolt Set, TE001K, Keypad Deadbolt Set, Deadbolt Set, Set</p>
	<p>TeeHO TE001K Keypad Deadbolt Set [pdf] Instruction Manual TE001K Keypad Deadbolt Set, TE001K, Keypad Deadbolt Set, Deadbolt Set, Set</p>