

# TeeHO TE001 Keypad Deadbolt Instruction Manual

## TeeHO TE001 Keypad Deadbolt Instruction Manual

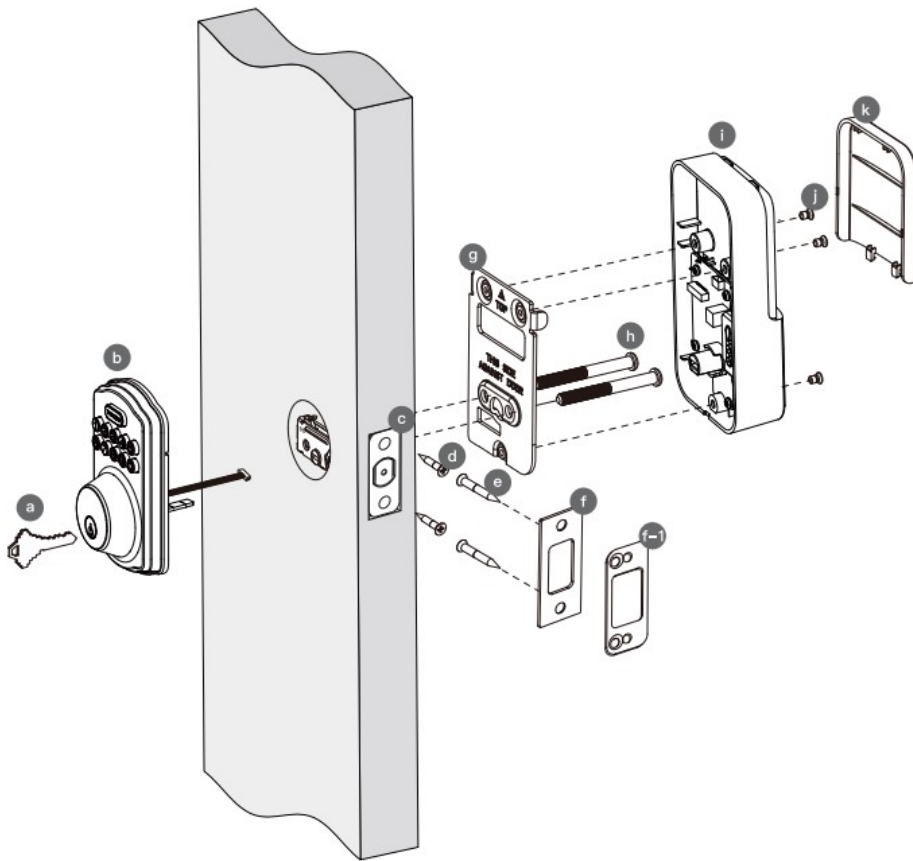


### Contents

- [1 Parts List](#)
- [2 Prepare the door and check dimensions](#)
- [3 Choose faceplate](#)
- [4 Install latch and deadbolt](#)
- [5 Parts identification](#)
- [6 Install exterior assembly](#)
- [7 Install interior assembly](#)
- [8 Documents / Resources](#)

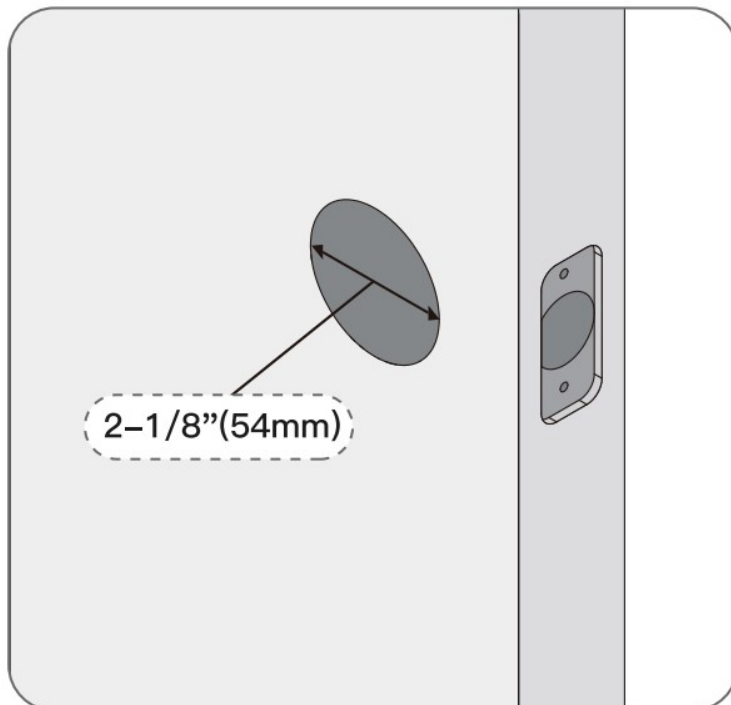
### Parts List

The details of part identification is shown on following page

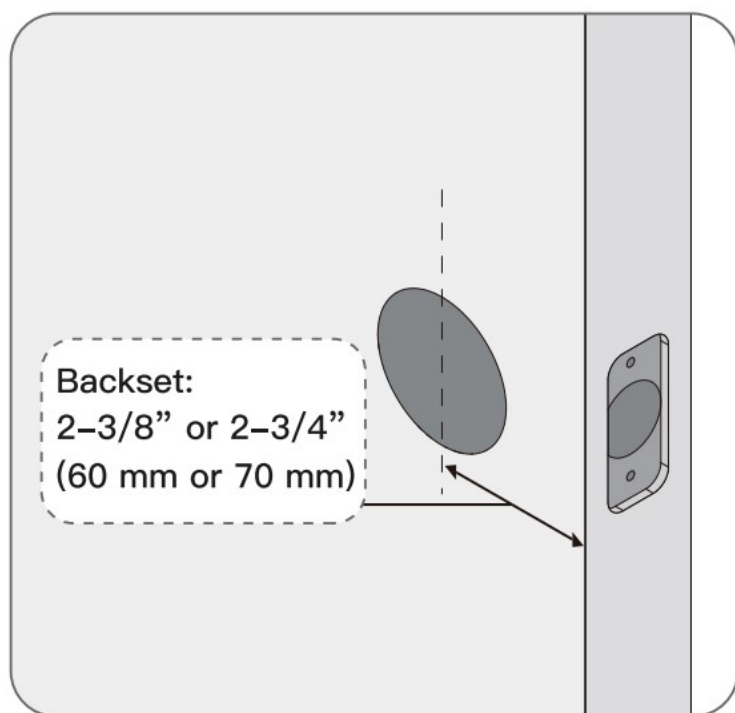


## Prepare the door and check dimensions

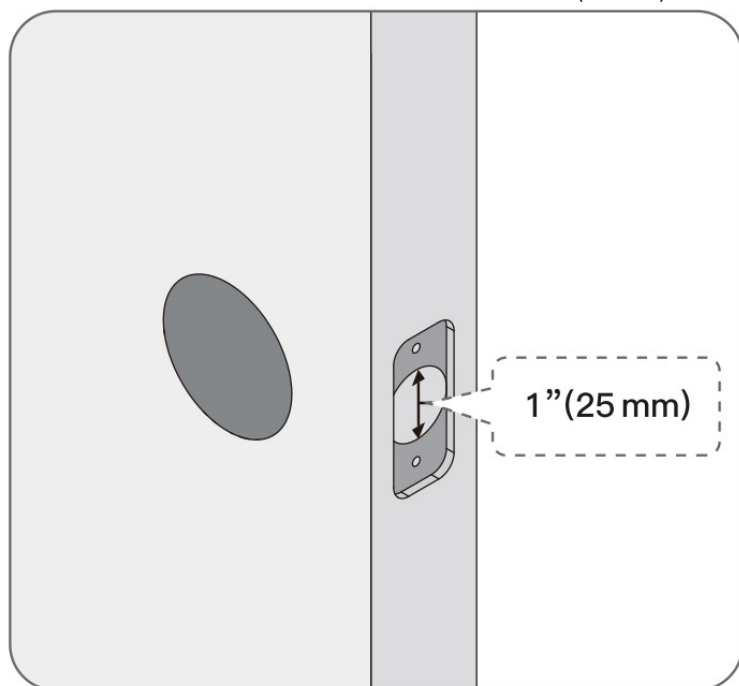
Measure to confirm that the hole in the door is 2-1/8" (54mm)



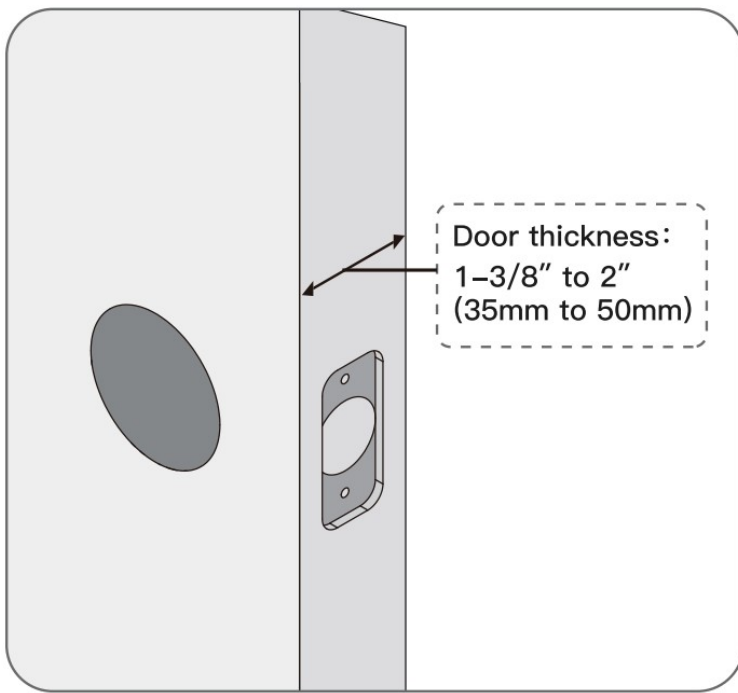
Measure to confirm that the backset is either 2-3/8" or 2-3/4" (60 or 70mm).



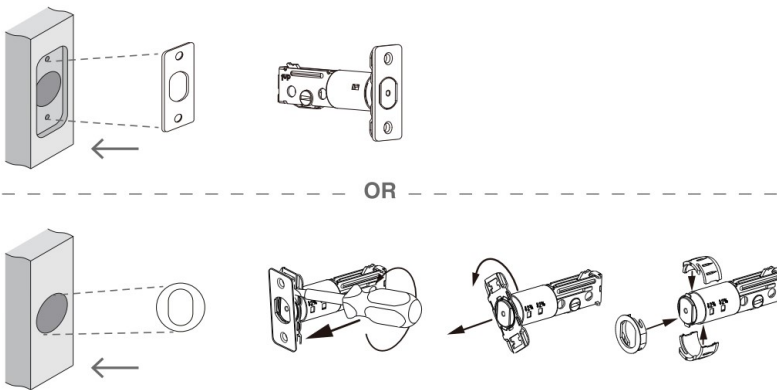
Measure to confirm that the hole in the door is 1"(25mm).



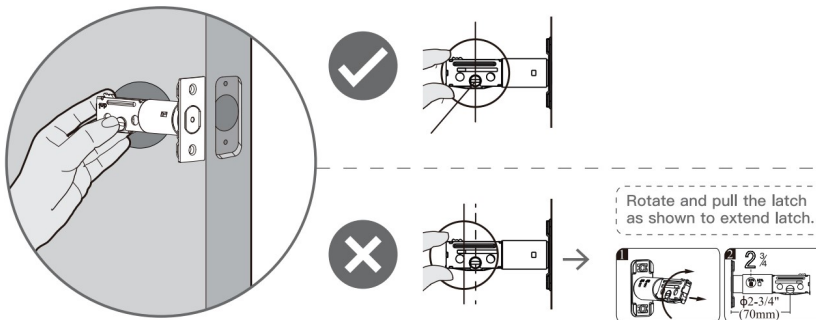
Measure to confirm that door thickness is between 1-3/8" and 2" (35mm to 50mm).



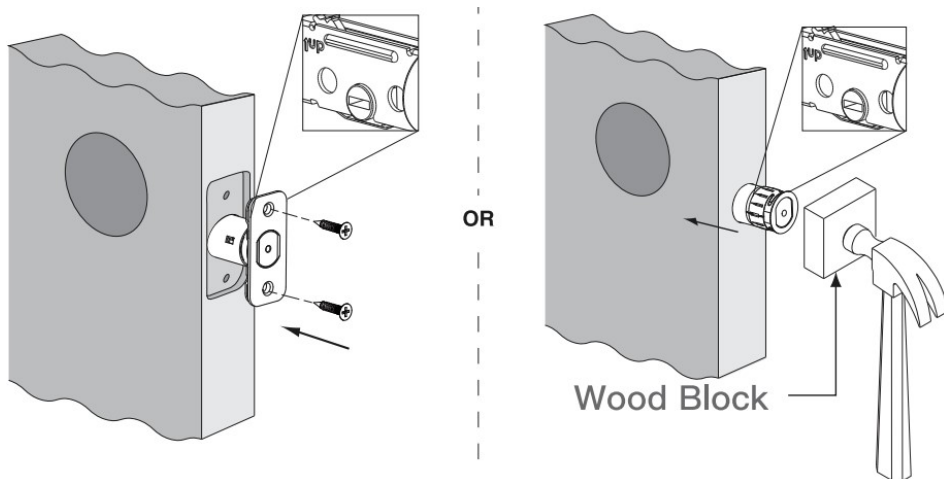
## Choose faceplate



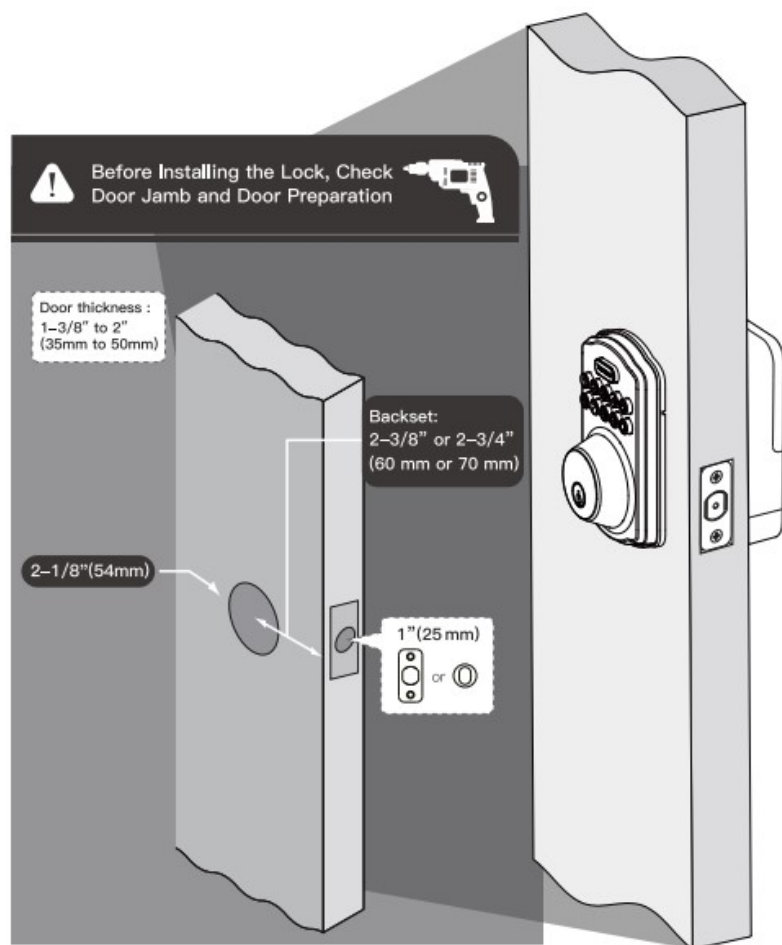
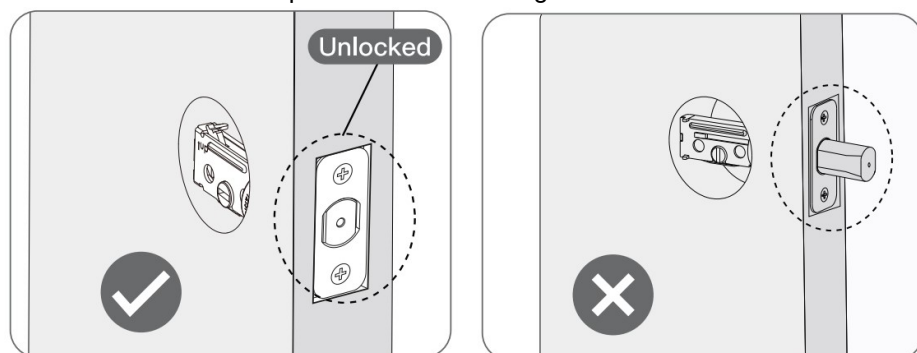
## Is the Slotted hole centered in the door hole



## Install latch and deadbolt



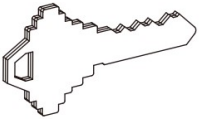
**!** **IMPORTANT:** Keep the latch loose before Installation



## Parts identification

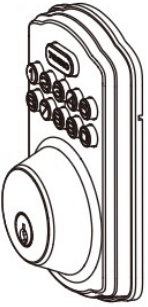
- Backup Key

a



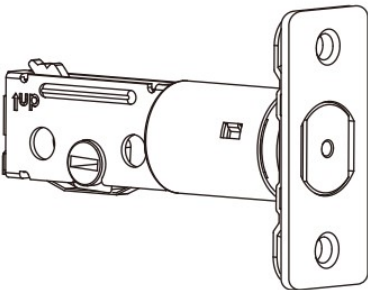
- Exterior Assembly

b

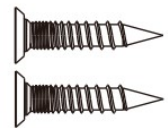


- Latch

c



- Latch Screws



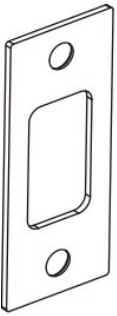
d

- Strike Screws

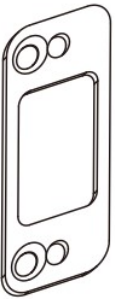


e

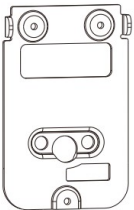
- Strike



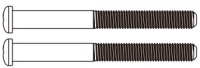
- Reinforcement Plate



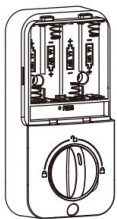
- Mounting Plat



- Mounting Sewers



- Interior Assembly



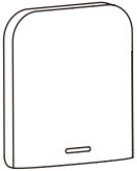
- Sewers

j



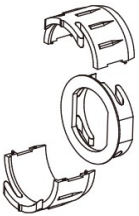
- Battery Cover

k



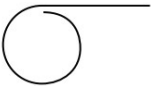
- Drive-in Collar

l



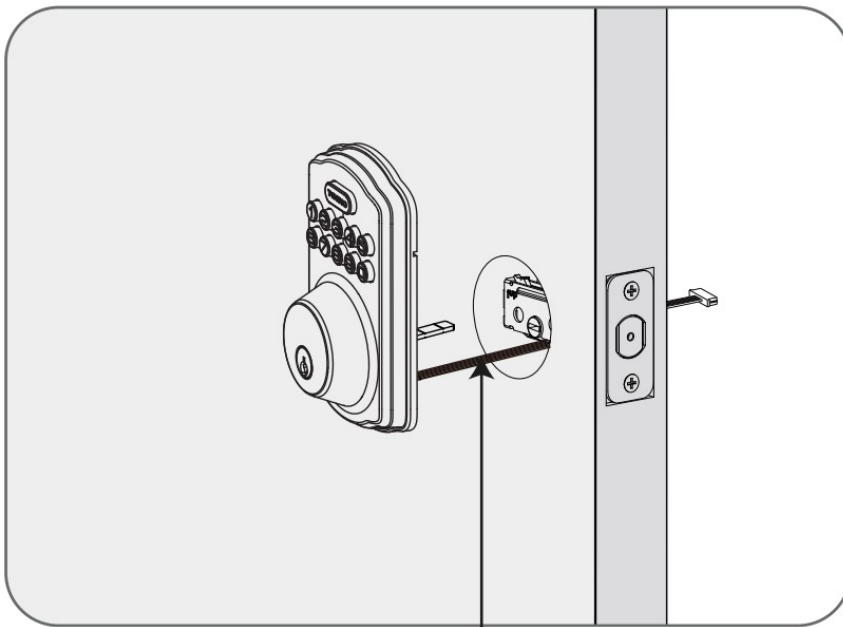
- Reset Tool

m

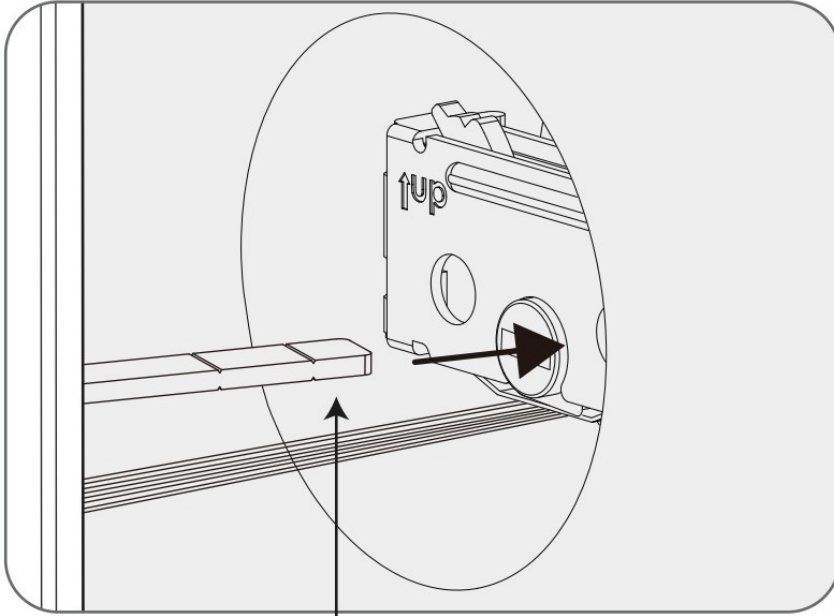


## Install exterior assembly

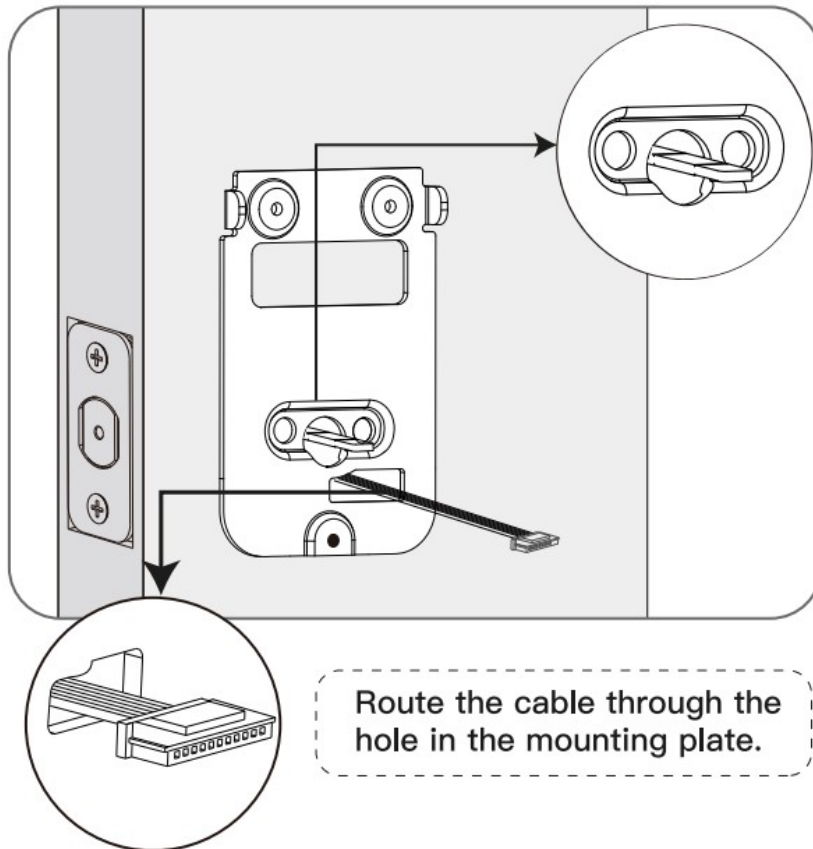
Route the cable below the latch



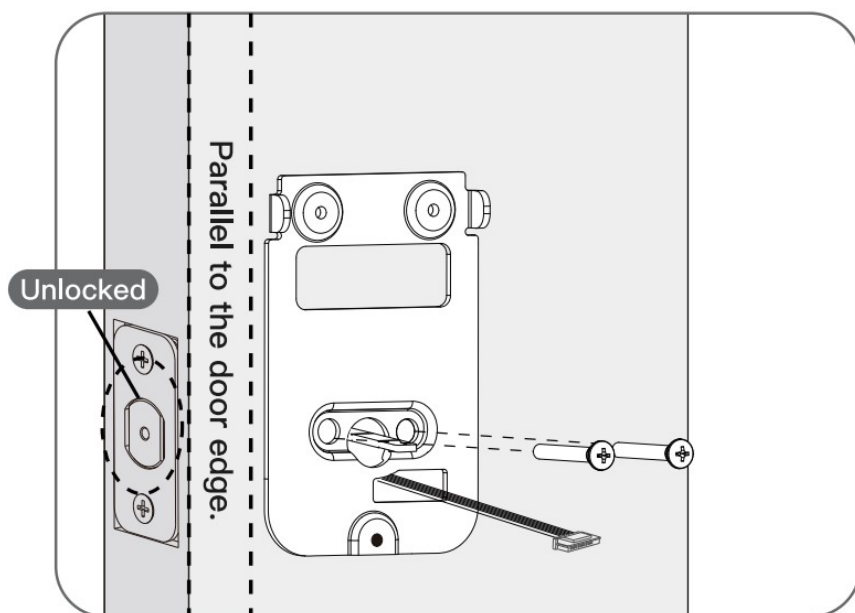
**IMPORTANT:** Bolt Must be in unlock Position note horizontal orientation of torque blade.




Route the cable through the hole in the mounting plate.



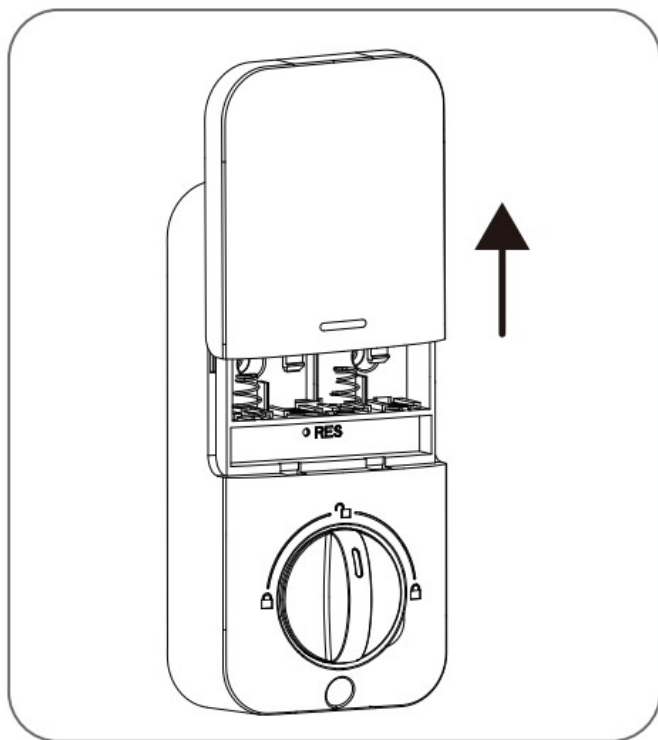
Secure the mounting plate with the Supplied Sewers.



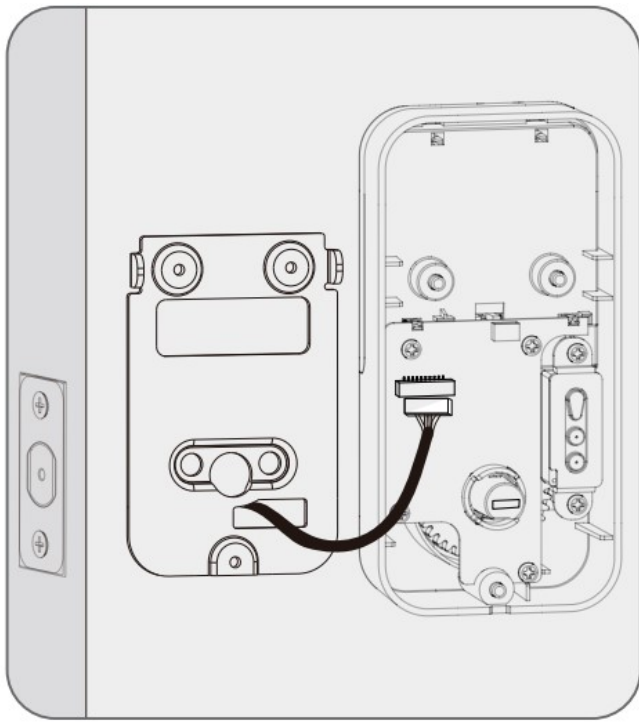
## Install interior assembly

 Do not load batteries until lock is completely installed.

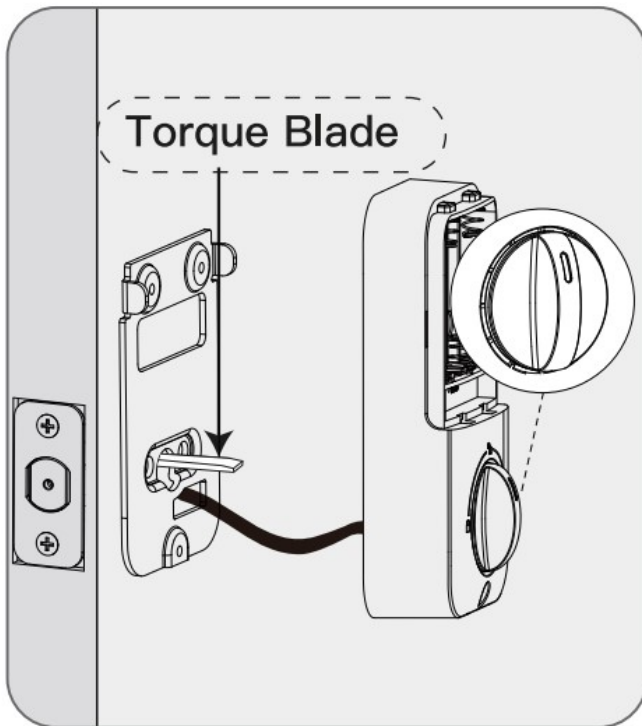
Remove the battery Cover.



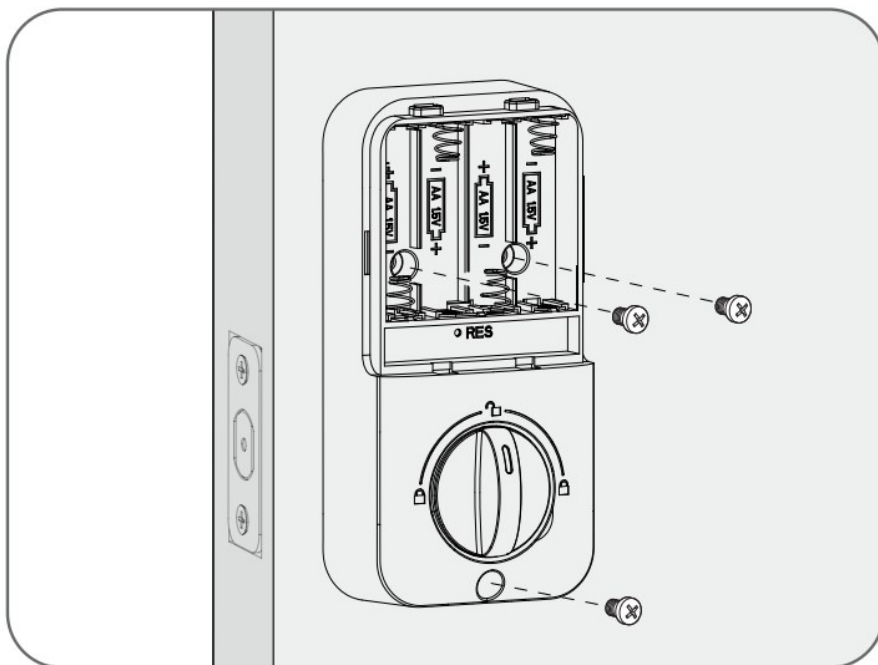
Connect the cable and ensure tight cable connection.



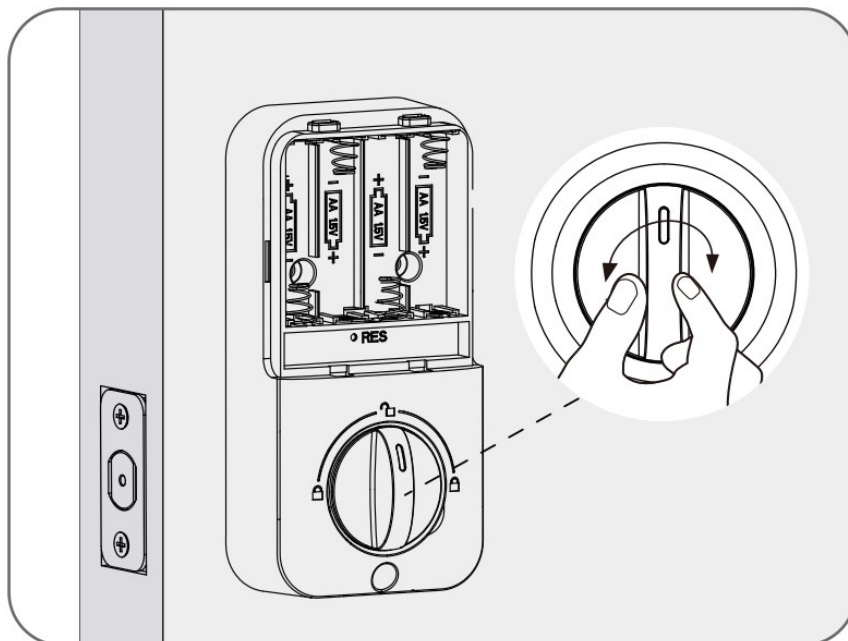
Rotate the Thumb turn in vertical Position and insert the horizontal orientation of torque blade into the interior assembly lock switch



Secure the interior assembly with the Supplied Secure.

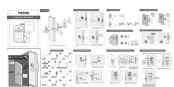


Test the lock by rotating the handle: 1. see if the bolt can be extended and retracted.



# TEEHO

## Documents / Resources



[TeeHO TE001 Keypad Deadbolt](#) [pdf] Instruction Manual  
TE001 Keypad Deadbolt, TE001, Keypad Deadbolt, Deadbolt