

TEEHO 20230810 Smart Locks for Front Door



TEEHO 20230810 Smart Locks for Front Door User Manual

[Home](#) » [TeeHO](#) » TEEHO 20230810 Smart Locks for Front Door User Manual 

Contents

- 1 TEEHO 20230810 Smart Locks for Front Door
- 2 Product Information
- 3 QUICK START GUIDE
- 4 How to Lock / Unlock
 - 4.1 Definitions
- 5 INSTALLATION OVERVIEW
- 6 Dimensions And Assembly Instructions
- 7 Programming
- 8 Factory Default Settings
- 9 Troubleshooting
- 10 FCC Statement
- 11 Documents / Resources
 - 11.1 References

TEEHO

TEEHO 20230810 Smart Locks for Front Door



Product Information

Specifications

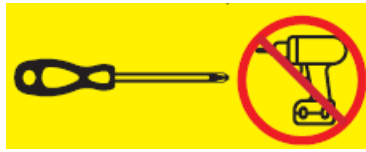
- **Product:** Smart Lock
- **Features:** Keypad, Keyhole, Bluetooth & Wi-Fi connectivity, Auto Lock Mode
- **Code Format:** Master Code (4 to 10 digits), User Code (4 to 10 digits)

Frequently Asked Questions

- **Q:** Can I use an electric screwdriver during installation?
 - **A:** No, it is recommended not to use an electric screwdriver during installation to avoid damage.

Thank you for purchasing our products. Please review this manual thoroughly before operating your device. All pictures in this manual are for illustration purpose only. Actual product may vary due to product upgrade.

TOOL REQUIRED

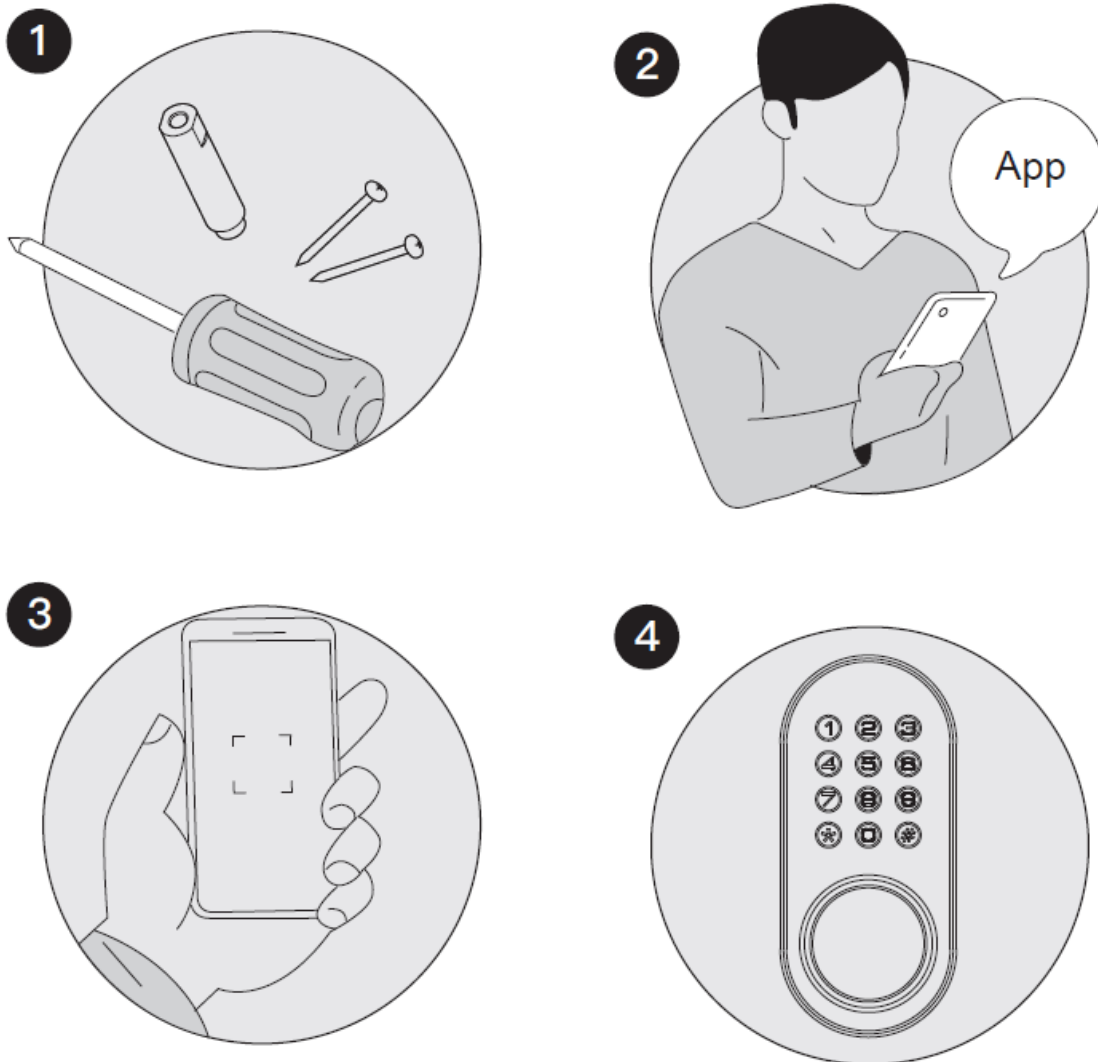


- Do not use an electric screwdriver during installation.

IMPORTANT

- Do not load batteries until lock is completely installed.

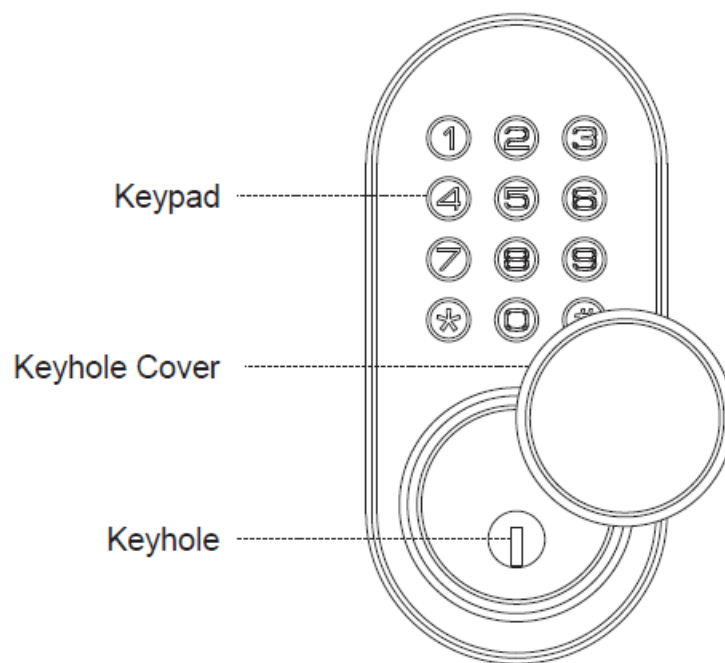
QUICK START GUIDE



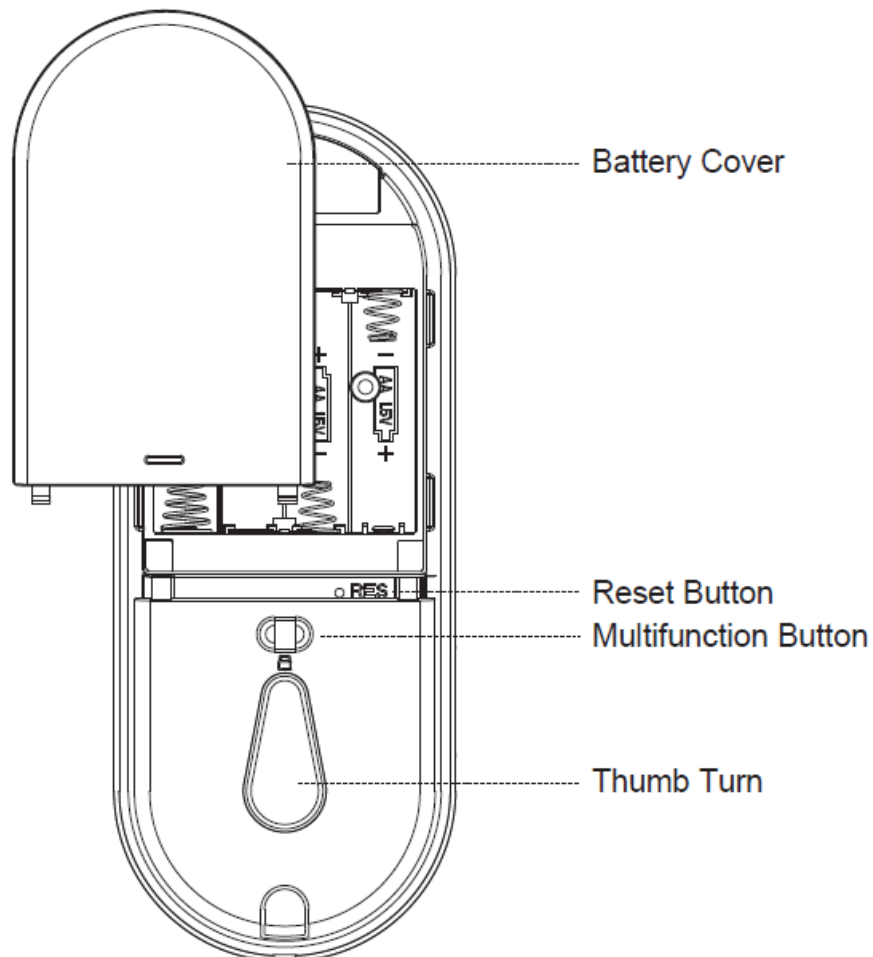
1. Following the installation instruction to install the smart lock.
2. Scan QR code to download App.
3. Register and Log in App, add device by scanning QR code on the device.
4. Complete Bluetooth & Wi-Fi setup in the App.

At a Glance

Exterior Assembly

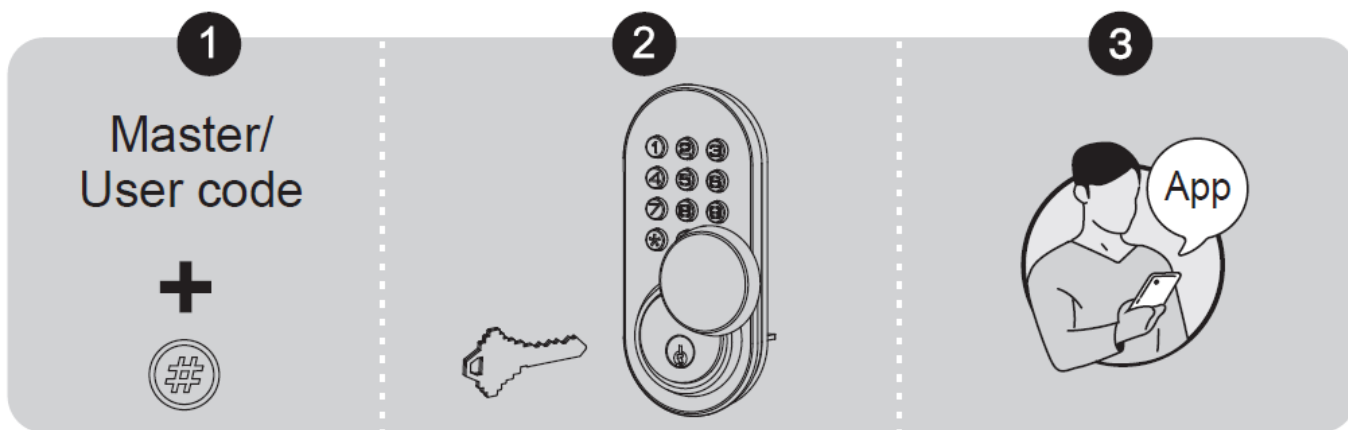


Interior Assembly

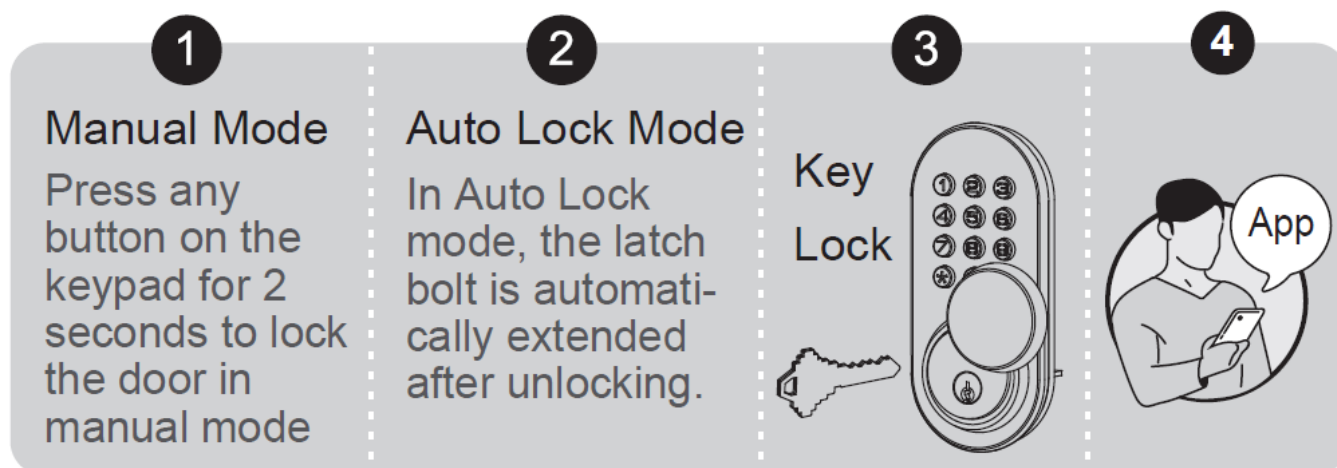


How to Lock / Unlock

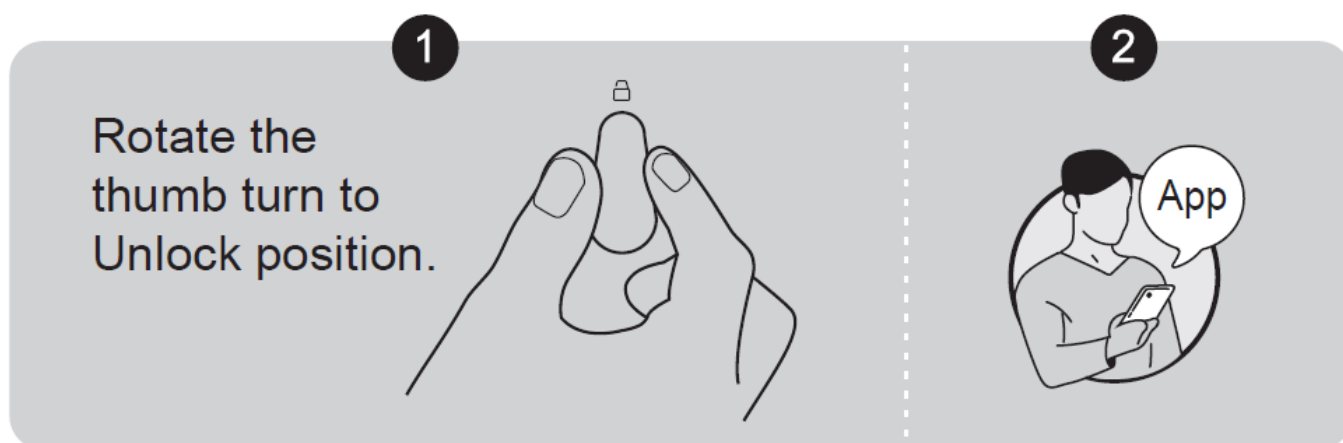
UNLOCK the door from outside



LOCK the door from outside



UNLOCK the door from inside



LOCK the door from inside

1

Auto Lock Mode

In Auto Lock mode, the device will be locked automatically.

2

Manual Mode

Rotate the thumb turn to the lock position to lock the device

3

Definitions

MASTER CODE

- Required for programming and function settings. The master code can be used to unlock the door in away mode and private mode.
- The default master code must be changed before programming. The owner/manager should keep this information confidential.

AUTO LOCK

- Automatically locks the latch 30 seconds after unlocking.
- This function is disabled by default. You can set the time delay for automatic locking between 10 and 180 seconds.

WRONG CODE ENTRY LIMIT

- After 10 unsuccessful attempts to enter an invalid PIN code, the device switches off for 3 minutes.

AWAY MODE

This is a safety feature for you when you leave your house for vacation or a long trip. When you activate the away mode, all user codes will be disabled until the master code is entered on the keypad. When the lock is unlocked by turning the thumb or key, an alarm will sound for 1 minute. By entering the master code on the keypad, you can disable the alarm and the away mode.

SILENT MODE

- The sounds when pressing keypad can be muted. However, you will still hear low battery warnings and system alerts.

MULTIFUNCTION BUTTON

- Push and hold the multifunction button on inside panel for 3 seconds to activate privacy mode. This will disable

all user PIN code access.

- Privacy mode will be disabled automatically after unlock the door with the thumb turn or master PIN code.

LOW BATTERY ALARM

- The batteries are getting low if the battery indicator keeps flashing.
- Please replace with four new batteries for the best performance (alkaline batteries only).

UNLOCK WITH FAKE CODE



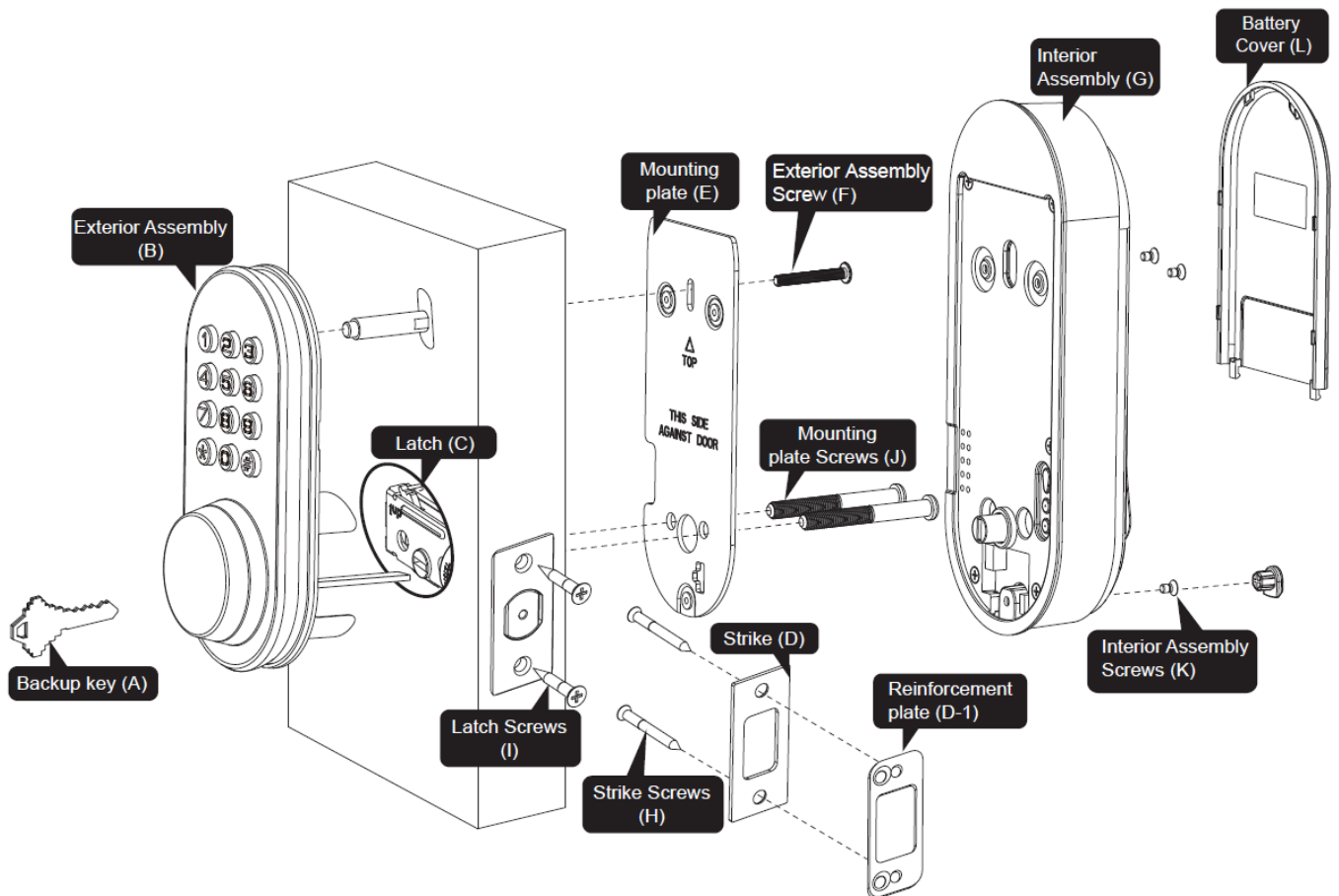
- User can prevent pin code exposure from strangers by entering random digits before or after pin code.

Code Format

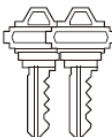

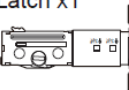












1. **Master Code(4 to 10 digits):** The default Master Code is 12345678. It is required that you change it to a code of your own before programming.
2. **User Code (4 to 10 digits):** A total of 20 User Codes can be programmed and stored.
3. Both Master Code and User Code don't support the following combination of numbers.

A.	<table border="1"><tr><td>1</td><td>2</td><td>3</td><td>4</td><td>5</td><td>6</td><td>7</td><td>8</td><td>9</td></tr></table>	1	2	3	4	5	6	7	8	9	✗	Forward number sequence
1	2	3	4	5	6	7	8	9				
B.	<table border="1"><tr><td>9</td><td>8</td><td>7</td><td>6</td><td>5</td><td>4</td><td>3</td><td>2</td><td>1</td></tr></table>	9	8	7	6	5	4	3	2	1	✗	Backward number sequence
9	8	7	6	5	4	3	2	1				
C.	<table border="1"><tr><td>2</td><td>2</td><td>2</td><td>2</td><td>2</td><td>2</td><td>2</td><td>2</td><td>2</td></tr></table>	2	2	2	2	2	2	2	2	2	✗	Repeat number sequence
2	2	2	2	2	2	2	2	2				
D. If	<table border="1"><tr><td>5</td><td>6</td><td>8</td><td>3</td></tr></table> ✓	5	6	8	3							
5	6	8	3									
Then	<table border="1"><tr><td>5</td><td>6</td><td>8</td><td>3</td><td>9</td><td>1</td></tr></table> ✗	5	6	8	3	9	1		Contain existing code sequence			
5	6	8	3	9	1							
and	<table border="1"><tr><td>9</td><td>1</td><td>5</td><td>6</td><td>8</td><td>3</td></tr></table> ✗	9	1	5	6	8	3					
9	1	5	6	8	3							

INSTALLATION OVERVIEW



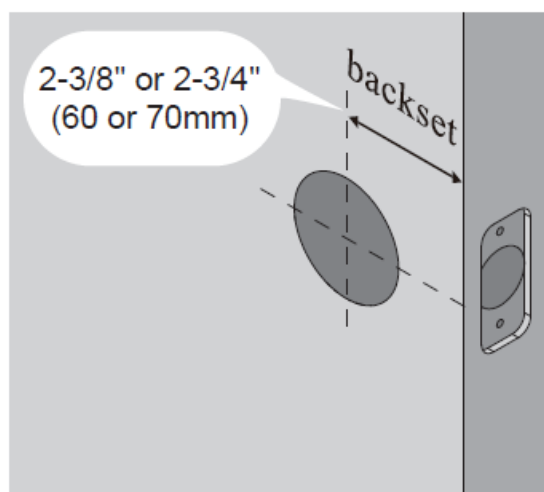
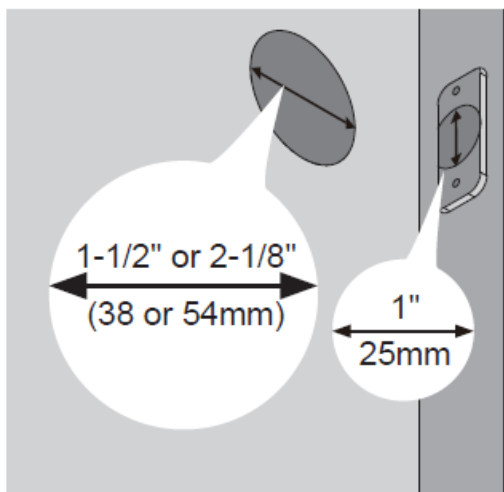
Parts List

A Backup Key x2 	B Exterior Assembly x1 	C Latch x1  C-1 Drive-In Collar (Optional) 	D Strike x1  D-1 Reinforcement Plate x1 (optional) 
E Mounting Plate x1 	F Exterior Assembly Screw (Optional) 	G Interior Assembly x1 	H Strike Screws x2  I Latch Screws x2 
J Mounting plate Screws x2  (35mm<door thickness<50mm)	K Interior Assembly Screws x3 	L Battery Cover x1 	M Reset Tool x1 

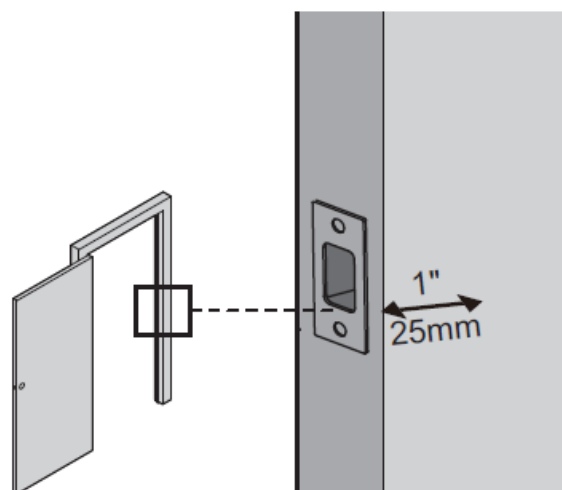
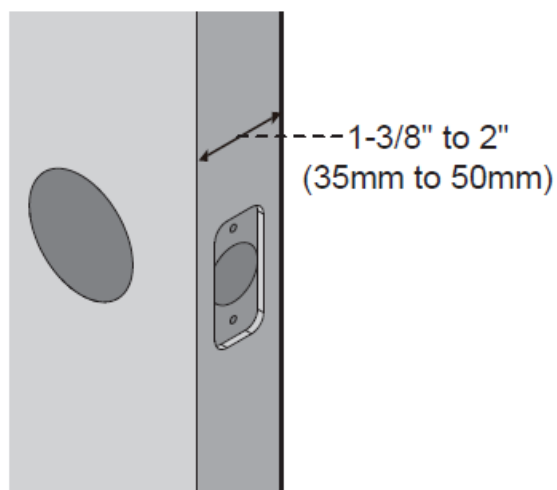
- If any parts are missing or damaged, please contact Customer Support.

Dimensions And Assembly Instructions

STEP 1: Prepare the door and check dimensions



- Measure to confirm that the hole in the door is 1-1/2" or 2-1/8" (38mm or 54mm)
 - Measure to confirm that the hole in the door edge is 1" (25mm).
- Measure to confirm that the backset is either 2-3/8" or 2-3/4" (60 or 70mm)

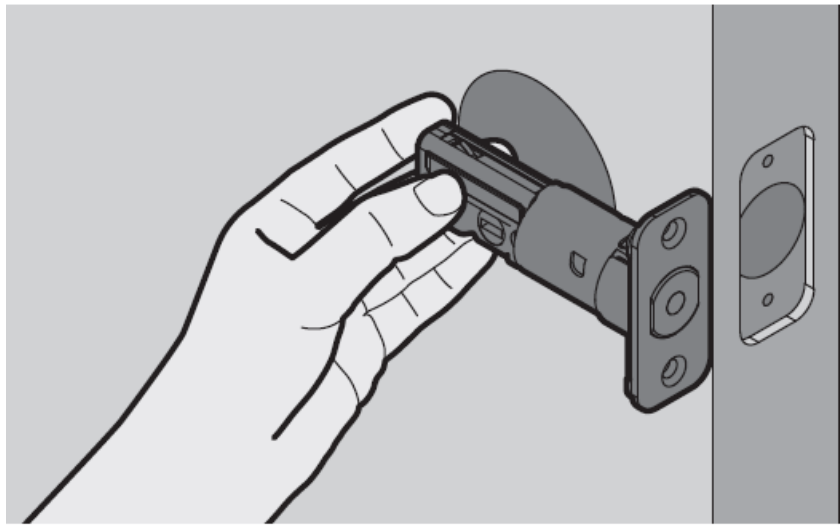


- Measure to confirm that the door is 1-3/8" to 2" (35 mm to 50mm) thick.
- Make sure the hole in the door frame is drilled a minimum of 1" (25mm) deep, to leave enough space for the deadbolt to extend into the door frame when the door is locked.

Notes

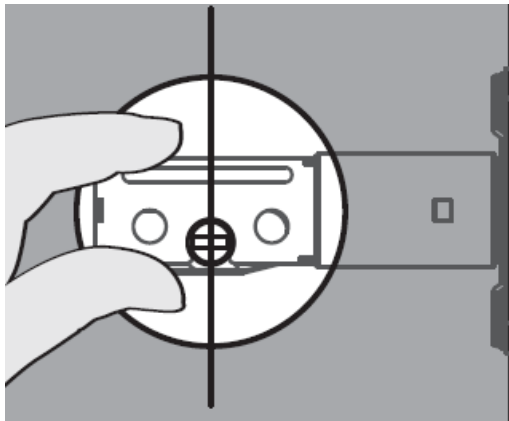
- Make sure the door frame is aligned with the door.
- There are no obstructions stuck in the door frame.

STEP 2: Install the latch and strike



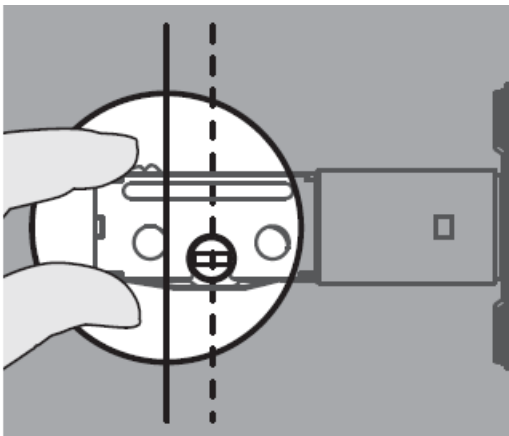
- Determine backset and adjust the latch
 - Hold the latch in front of the door hole, with the latch face flush against the door edge. Is the slotted hole centered in the door hole?

YES



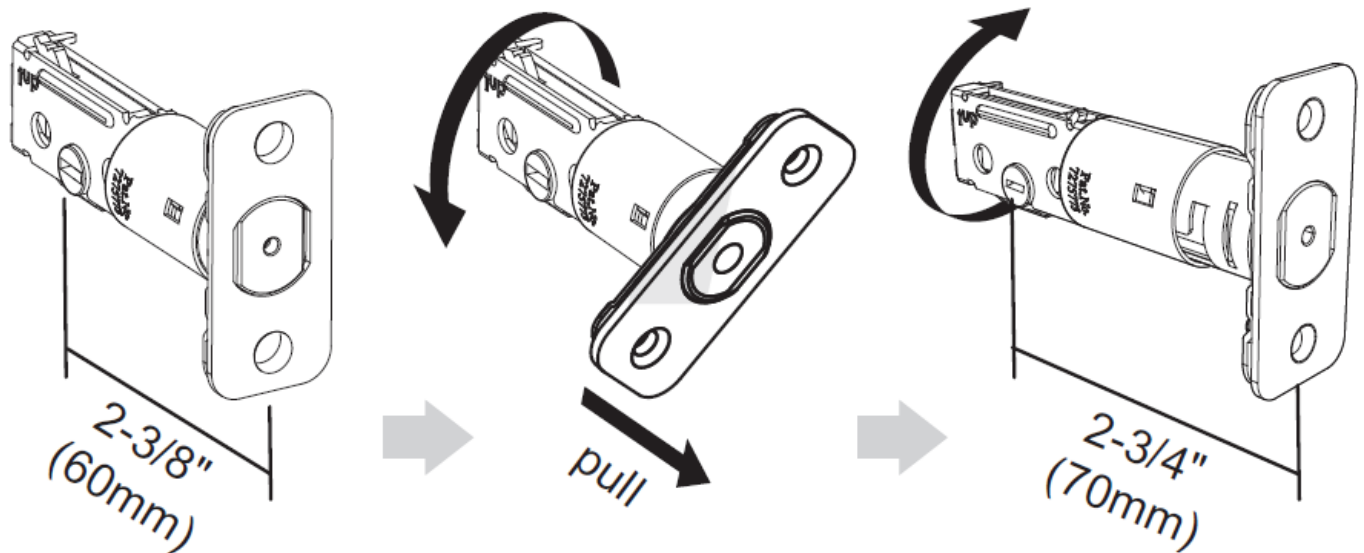
- No adjustment is required.
- Proceed to next step.

NO

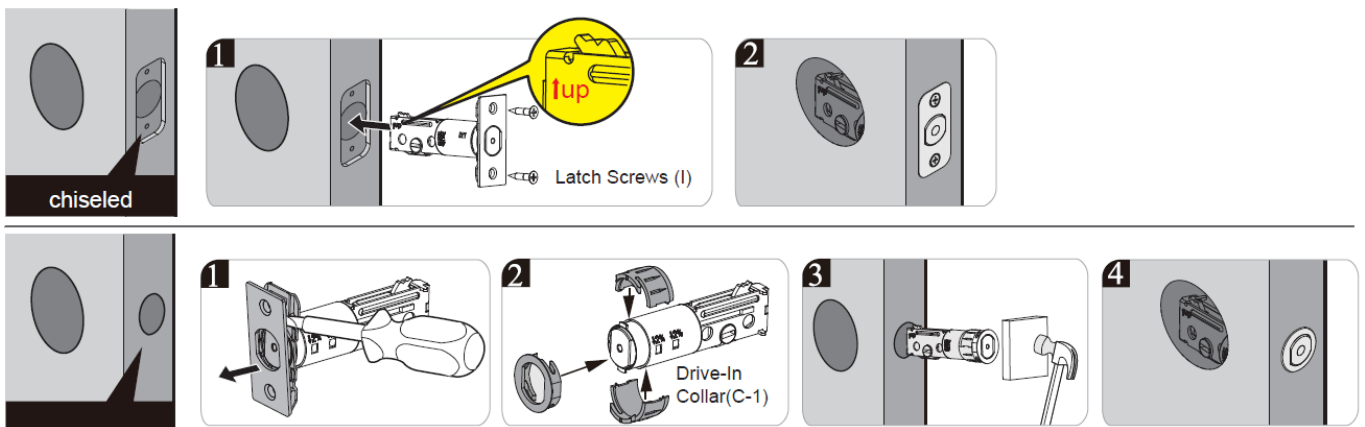


- Slotted hole is NOT centered.

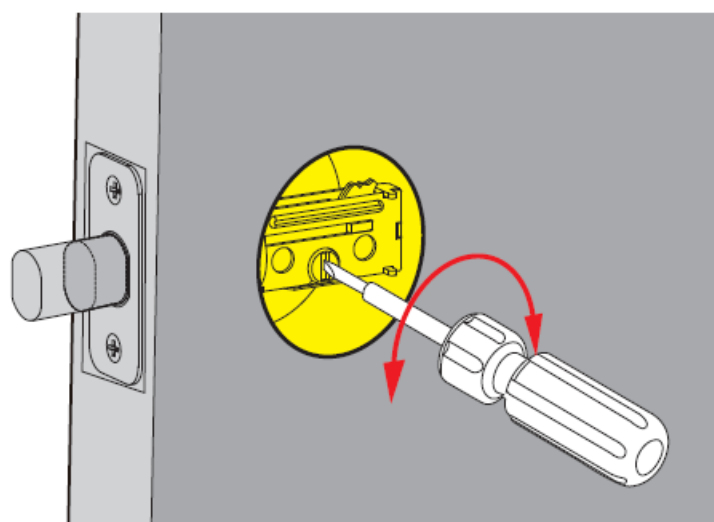
- Rotate and pull the latch as shown to extend latch.



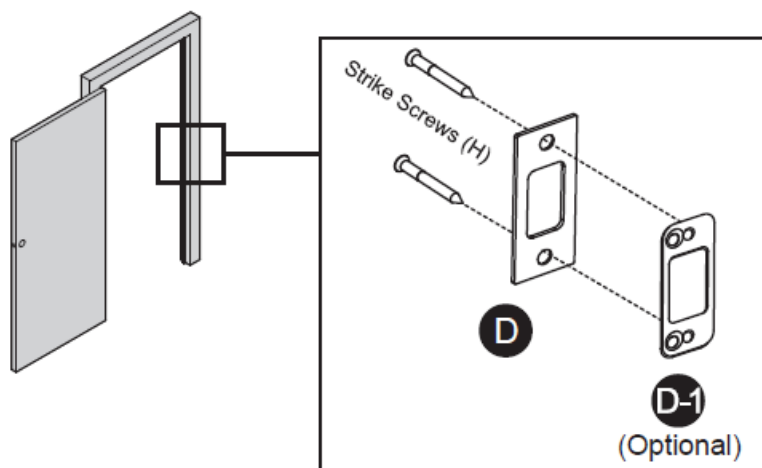
Install the latch



Use a screwdriver to test if deadbolt works smoothly



Install strike on the door frame

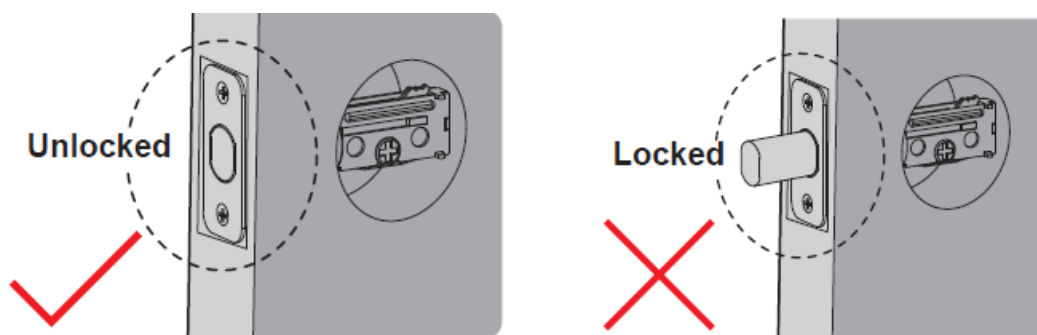


IMPORTANT

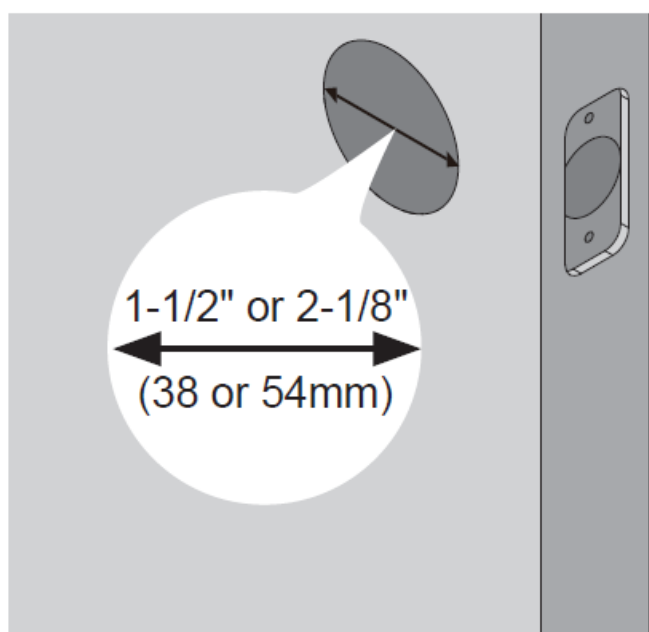
- Make sure the hole in door frame is drilled a minimum of 1" (25mm) deep.

STEP 3: Install exterior assembly

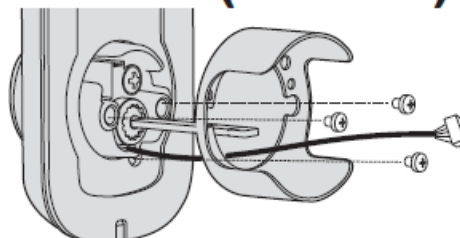
IMPORTANT



- Before installation, make sure the latch is fully retracted (in the unlocked position).



1-1/2" (38mm)

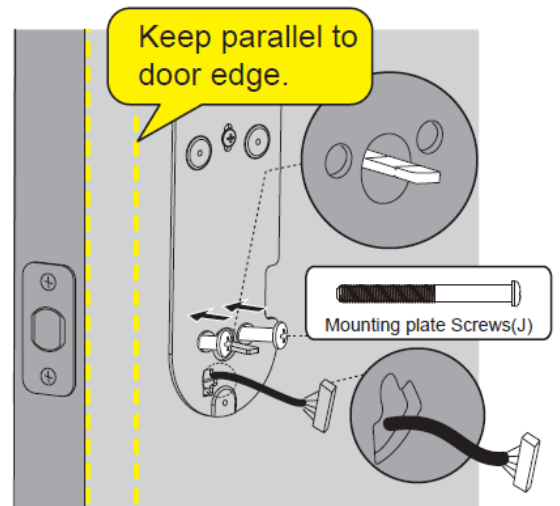
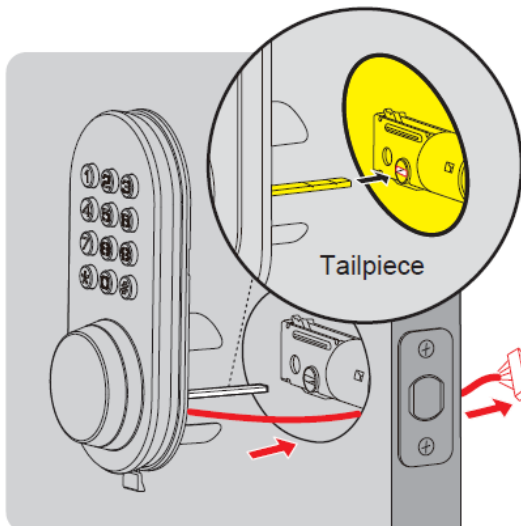


Remove the spacer

2-1/8" (54mm)

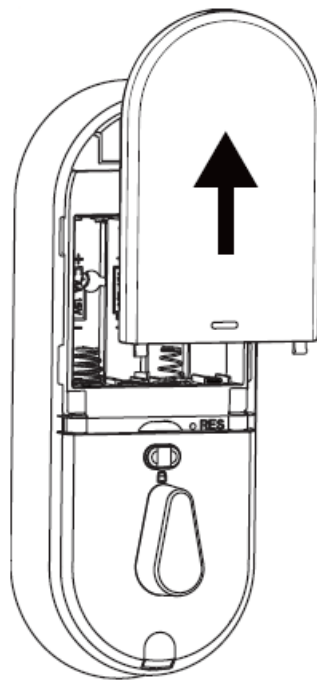
Proceed to next step

- Measure the diameter of the hole in the door.

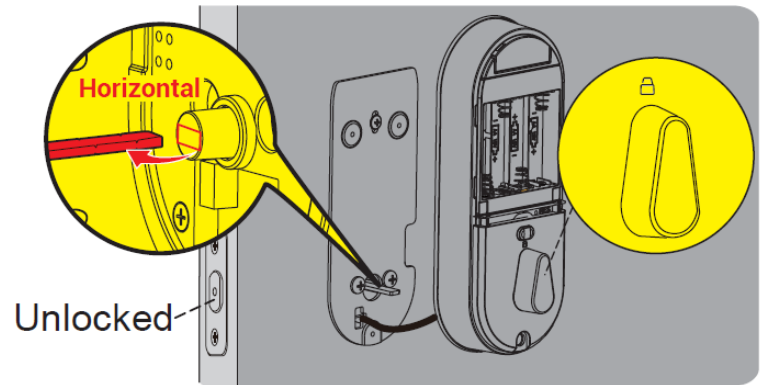
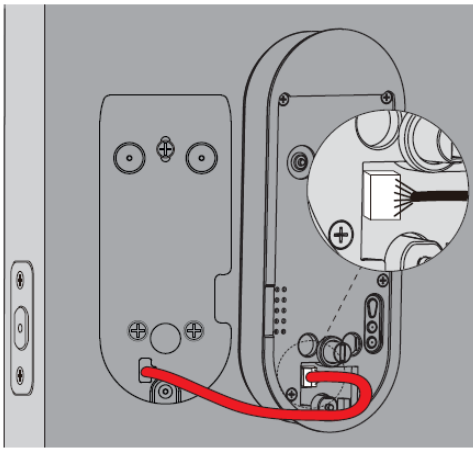


- With the latch fully retracted (in the unlocked position), route the cable below the latch, and insert the tailpiece through the slot in the latch.
- Secure the mounting plate with the supplied screws. Do not over tighten screws.

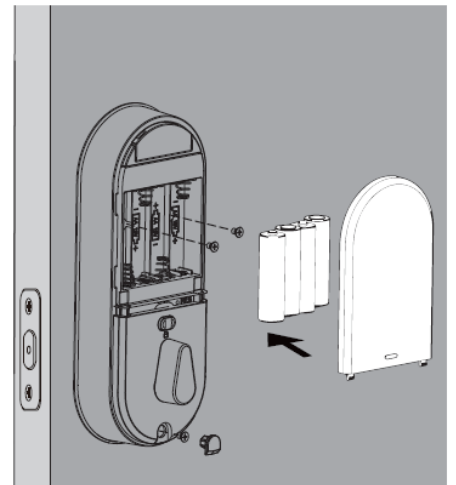
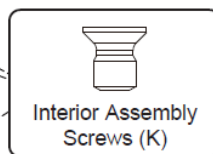
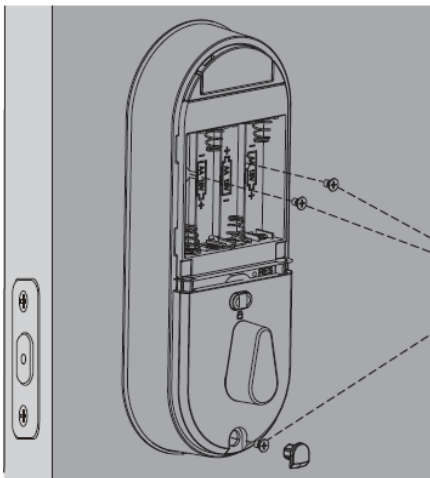
STEP 4: Install interior assembly



- Push the battery cover out in the direction as illustrated.



- Insert the cable into the connector. Push the connector in firmly until it is completely attached.
- Keep the thumb turn in vertical position and install the interior assembly.

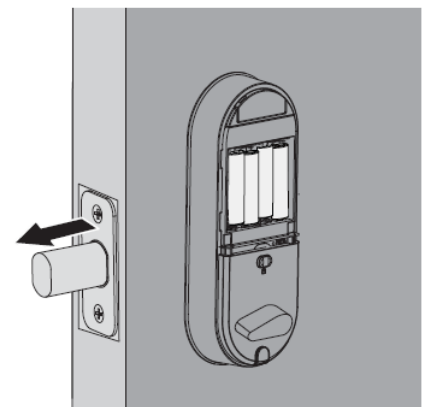
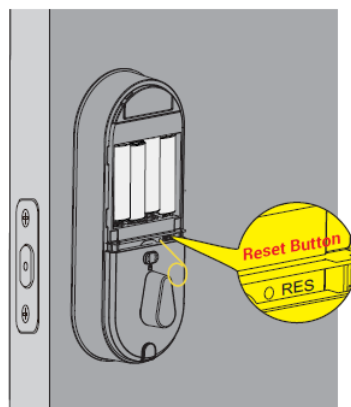
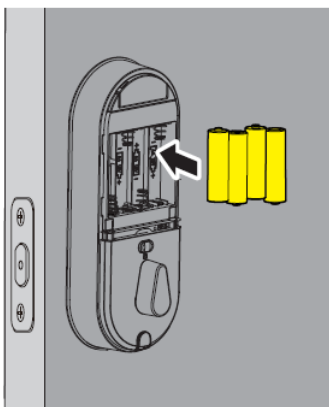


- Attach Interior Assembly to Mounting Plate and tighten 3 Screws.
- Load 4 AA (1.5V) batteries (Not included) into the battery compartment.

STEP 5: Door Handling

IMPORTANT

This step is required and crucial for the lock after installation.



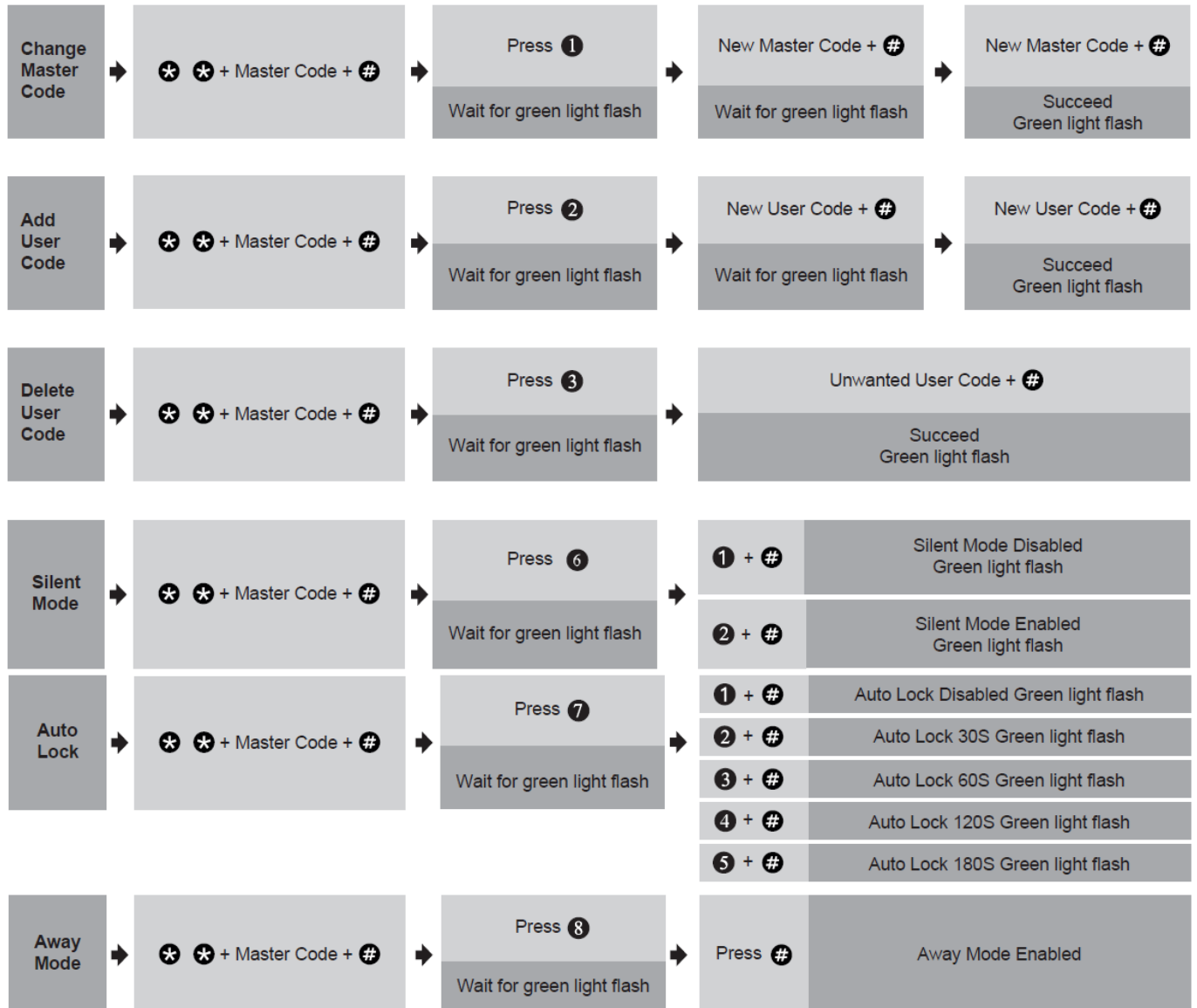
- While keeping your lock unlocked, insert 4 AA alkaline batteries into the battery pack.
- Use the Reset Tool to press and hold the Reset Button for more than 5 seconds until you hear a long “BEEP”.

- If the reset is successful, the latch bolt will extend on its own to learn the handing orientation of the door.

Programming

IMPORTANT:

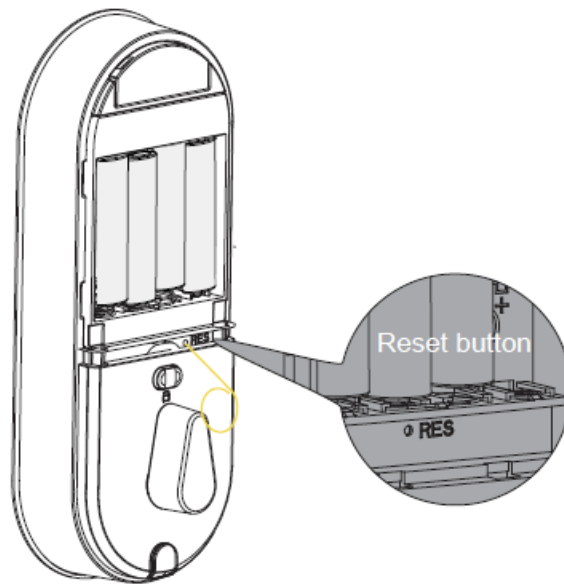
- The default Master Code is 12345678.
- It is required that you change it to a code of your own before programming.



Factory Default Settings

How to Reset?

Resetting the device will delete all User PIN Codes and Master PIN Code stored in the lock.



- **Step 1.** Keep the door open and the lock unlocked (thumb turn will be vertical).
- **Step 2.** Using the Reset Tool, press and hold the Reset Button for 5 seconds until you hear the “BEEP” and the latch extends out automatically.

Factory Default Settings	
Settings	Factory Default
Master Code	12345678
Auto Lock	Disabled
Silent Mode	Disabled
Wrong Code Entry Limit	10 times
Shutdown Time	3 mins
Away Mode	Disabled

Troubleshooting

Problem	Solution
The latch does not operate correctly after installation.	<p>Make sure the backset on the latch is set to the proper length. Refer to Installation Guide. Make sure prior to installation the latch bolt is retracted. Refer to Installation Guide.</p> <p>Please restore to factory default setting and enter the default Master PIN code to set up the lock. Refer to User Guide.</p>
Lock does not smoothly lock or unlock while using the thumb turn.	Confirm the proper mounting screws are installed.
Lock set up failed.	<p>Make sure the lock is installed correctly.</p> <p>Insert fresh batteries and make sure that the cable is properly connected, not pinched. After installation, reset the lock to the factory default settings.</p>
Keypad not responding.	<p>Make sure batteries are inserted correctly.</p> <p>If the battery indicator flashes continuously, the batteries are low. Replace them with four new AA alkaline batteries.</p> <p>Make sure that the cable is properly connected and has not been damaged during installation.</p>
Master PIN Code cannot be changed.	Refer to the Quick Start Guide to reset the lock and reprogram all PIN Codes.
I forgot my Master PIN Code.	Perform a factory reset to clear all PIN codes. Once the reset is complete, all PIN Codes will be deleted and the Master PIN Code will be reset to the default Master PIN Code of 12345678.
Auto Lock is not working.	If the battery indicator blinks continuously, the batteries are weak. Replace them with four new batteries to get the best performance (alkaline batteries only). Refer to the Quick Set Up to activate the Auto Lock function.

FCC Statement

This equipment has been tested and found to comply with the limits for a Class B digital device, pursuant to part 15 of the FCC Rules. These limits are designed to provide reasonable protection against harmful interference in a residential installation. This equipment generates, uses and can radiate radio frequency energy and, if not installed and used in accordance with the instructions, may cause harmful interference to radio communications. However, there is no guarantee that interference will not occur in a particular installation. If this equipment does cause harmful interference to radio or television reception, which can be determined by turning the equipment off and on, the user is encouraged to try to correct the interference by one or more of the following measures:

- Reorient or relocate the receiving antenna.
- Increase the separation between the equipment and receiver.
- Connect the equipment into an outlet on a circuit different from that to which the receiver is connected.
- Consult the dealer or an experienced radio/TV technician for help.

Caution: Any changes or modifications to this device not explicitly approved by manufacturer could void your

authority to operate this equipment.

This device complies with part 15 of the FCC Rules. Operation is subject to the following two conditions:

1. This device may not cause harmful interference
2. This device must accept any interference received, including interference that may cause undesired operation.

RF Exposure Information

- This equipment complies with FCC radiation exposure limits set forth for an uncontrolled environment.
- This equipment should be installed and operated with minimum distance 20cm between the radiator and your body.

ISED Statement

This device contains licence-exempt transmitter(s)/receiver(s) that comply with Innovation, Science and Economic Development Canada's licence-exempt RSS(s). Operation is subject to the following two conditions:

1. This device may not cause interference.
2. This device must accept any interference, including interference that may cause undesired operation of the device.

The digital apparatus complies with Canadian CAN ICES-3 (B)/NMB-3(B).

This device meets the exemption from the routine evaluation limits in section 2.5 of RSS 102 and compliance with RSS 102 RF exposure, users can obtain Canadian information on RF exposure and compliance.

This equipment complies with Canada radiation exposure limits set forth for an uncontrolled environment.
This equipment should be installed and operated with minimum distance 20cm between the radiator & your body.


Warnings

Failure to follow the below instructions could result in damage to the product and void the factory warranty.
This manufacturer advises that no lock can provide complete security by itself.
This lock may be defeated by forcible or technical means, or evaded by entry elsewhere on the property.
No lock can substitute for caution, awareness of your environment, and common sense.

Product Care:

- This lockset is designed to provide the highest standard of product quality and performance. Care should be taken to ensure a long-lasting finish. When cleaning is required, use a soft, damp cloth. Using lacquer thinner, caustic soaps, abrasive cleaners or polishes could damage the coating and result in tarnishing.
- Avoid exposure to direct sunlight. Long-term exposure to direct sunlight may damage the lock.
- Do not install batteries until the lock is completely installed on door.
- **User PIN Codes:** Can be 4-10 digits and can be set up in the App.
- **Sharing Access:** Sharing access to your lock means that you are allowing other users to control and track usage of the device. Please be aware of the potential risks it may cause.

Documents / Resources

	TEEHO 20230810 Smart Locks for Front Door [pdf] User Manual 20230810 Smart Locks for Front Door, 20230810, Smart Locks for Front Door, Locks for Front Door, Front Door
---	--

References

- [User Manual](#)

[Manuals+](#), [Privacy Policy](#)

This website is an independent publication and is neither affiliated with nor endorsed by any of the trademark owners. The "Bluetooth®" word mark and logos are registered trademarks owned by Bluetooth SIG, Inc. The "Wi-Fi®" word mark and logos are registered trademarks owned by the Wi-Fi Alliance. Any use of these marks on this website does not imply any affiliation with or endorsement.