



Tedstuff PB-Retrobox Designer Gray Modern Mailbox Instruction Manual

[Home](#) » [Tedstuff](#) » Tedstuff PB-Retrobox Designer Gray Modern Mailbox Instruction Manual 

Contents

- [1 Tedstuff PB-Retrobox Designer Gray Modern Mailbox](#)
- [2 Product Usage Instructions](#)
- [3 RetroBox & UptownBox cleaning instructions](#)
- [4 RetroBox & UptownBox assembly instructions](#)
- [5 Warranty](#)
- [6 Documents / Resources](#)
 - [6.1 References](#)
- [7 Related Posts](#)

Tedstuff

Tedstuff PB-Retrobox Designer Gray Modern Mailbox



Product Specifications

- Material: Stainless steel
- Finish: Painted
- Assembly Required: Yes
- Warranty: 1 year

Product Usage Instructions

Cleaning Instructions

The RetroBox & Uptown Box are durable but require regular maintenance to keep them looking good. Follow these steps:

1. Use WD-40 and a Scotch-Brite pad to clean any surface rust caused by minerals in the air.
2. Protect the stainless steel pole and base with WD-40 or 303-Marine protectant.
3. Clean the painted box and doors with soap and water, then apply wax with 303-Marine protectant.

Assembly Instructions

Follow these steps to assemble your RetroBox & UptownBox:

1. Choose a location away from direct sprinkler spray and well water.
2. Tools needed: 1 7/16 Socket or Crescent Wrenches, Level, Shovel or Post Hole Digger, Concrete mix (50 lbs.), Garden hose.
3. Attach the box to the pole using the provided bolts, washers, and nuts. Ensure both doors are locked during installation.
4. Place the pole with the attached box in the hole, level it from front to back & side to side.
5. Follow the concrete manufacturer's instructions for mixing and filling the hole. Allow it to set for 24 hours.

Warranty

The RetroBox & Uptown come with a one-year warranty covering replacement parts due to material defects. Contact us at info@tedstuff.com for any issues.

Frequently Asked Questions (FAQ)

- **Q: How often should I clean my RetroBox & UptownBox?**

A: Clean your box as needed, especially if you notice surface rust or dirt buildup. Regular cleaning will help maintain its appearance.

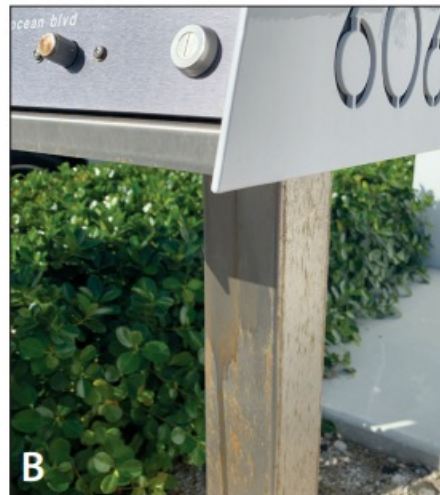
- **Q: Can I use any type of concrete mix for installation?**

A: It is recommended to use a 50 lb bag of Quickrete concrete mix for installation as it works great with the product.

RetroBox & UptownBox cleaning instructions

The RetroBox & Uptown Box are made like tanks, but like any fine piece of equipment, simple maintenance should be performed as needed to keep your box looking good forever. Any surface rust that may occur due to minerals in the air (A/B) can be cleaned with WD-40 and a Scotch-Brite pad (C/D/E).

The stainless steel pole and base can be protected with WD-40 or 303-Marine protectant (F). The painted box and doors (G/H) should be wiped down with clean soap and water, then waxed with 303-Marine protectant, which can also be found at any hardware or marine supply store.





RetroBox & UptownBox assembly instructions

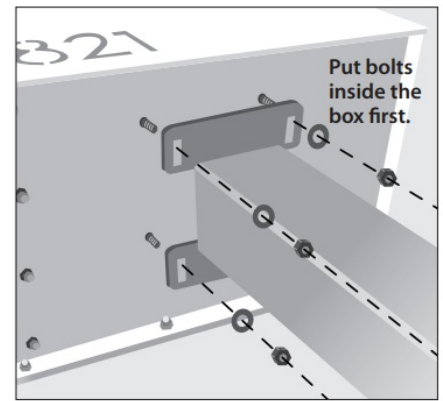
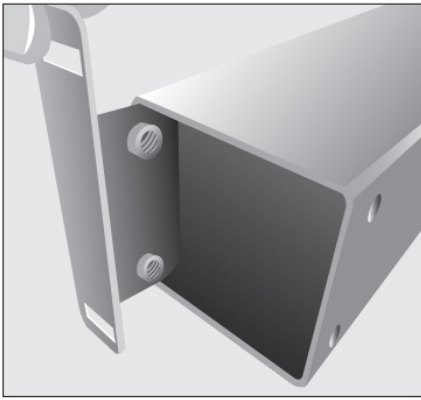
Please Note: When choosing a location, make sure sprinklers do not directly spray into the box. The box has a water sealing gasket to protect the elements, but not with a direct sprinkler spray. Also, well water spray and placement under deciduous trees may permanently discolor the box.

Tools Needed

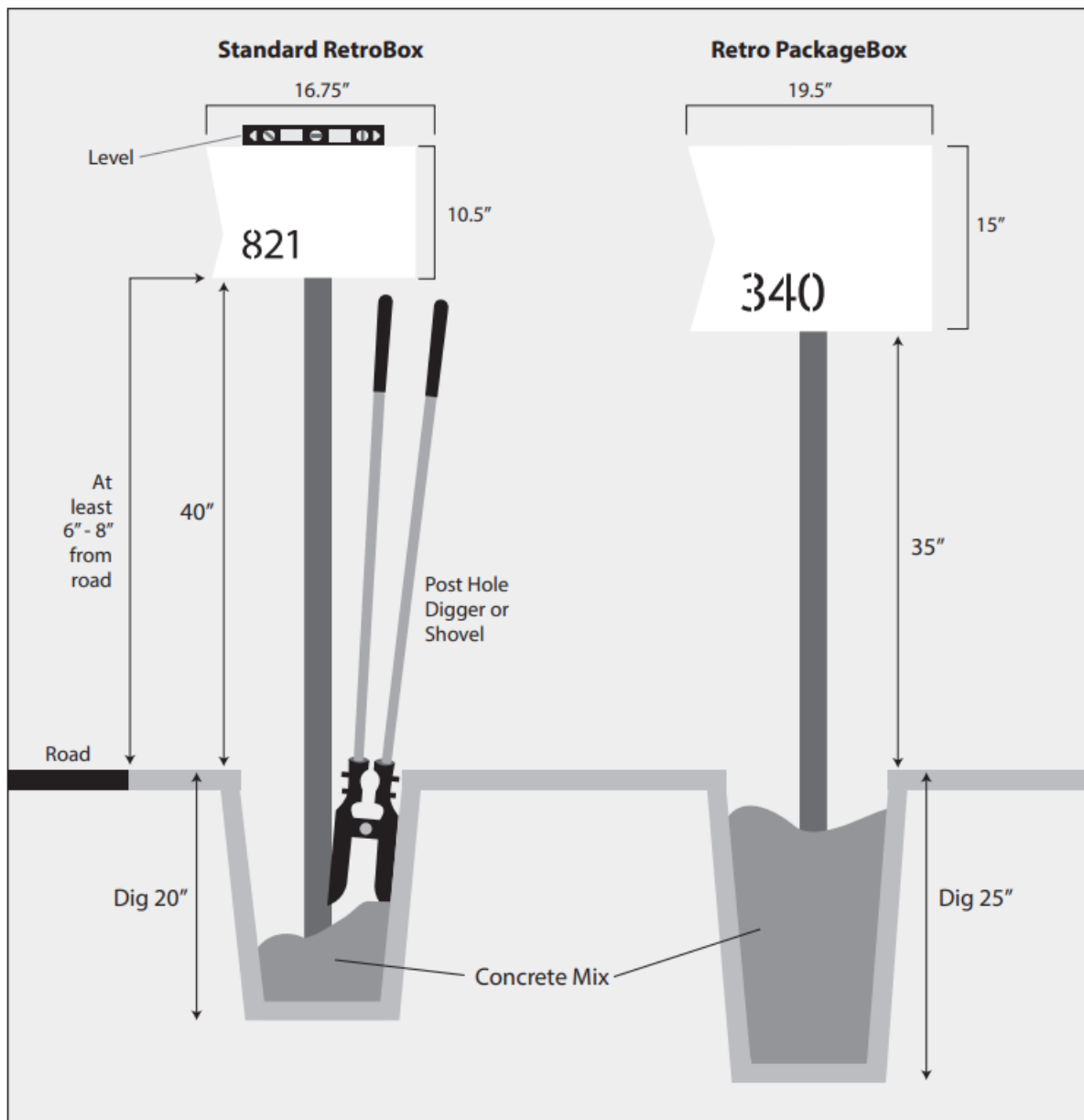
1. 1 7/16" Socket or Crescent Wrenches
2. Level
3. Shovel or Post Hole Digger
4. 50 lbs. of concrete mix. Quickrete works great.
5. Garden hose with water source for concrete.

Pole Assembly Instructions

1. Insert brackets to line up with the side holes.
2. Use the Four Screws to attached to the pole.
3. Attach the box to the pole with the four included 7/16" bolts, washers and nuts using your 7/16" Socket or Crescent Wrench. Please Note: make sure both doors are in the lock position, that way the doors will not swing and damage the finish of the doors. This can happen when installing the pole into the ground.




4. Place Pole with box attached in hole, and place level on top of the box. Level from front to back & side to side.
5. Follow the manufacturer's instructions for mixing the concrete and fill the hole, checking the level and adjust as needed. Allow to set for 24 hours.



Warranty

The RetroBox & Uptown offers a one year warranty that covers replacement parts due to any defect in material. Your RetroBox & Uptown will last a long time if you follow the care instructions included on the back page. Please contact us if you have any issues and send photos through info@tedstuff.com

Documents / Resources

	<p>Tedstuff PB-Retrobox Designer Gray Modern Mailbox [pdf] Instruction Manual PB-Retrobox-Locking-Package-Dropbox, PB-Retrobox Designer Gray Modern Mailbox, PB-Retr obox, Designer Gray Modern Mailbox, Gray Modern Mailbox, Modern Mailbox, Mailbox</p>
---	---

References

- [User Manual](#)

Manuals+, Privacy Policy

This website is an independent publication and is neither affiliated with nor endorsed by any of the trademark owners. The "Bluetooth®" word mark and logos are registered trademarks owned by Bluetooth SIG, Inc. The "Wi-Fi®" word mark and logos are registered trademarks owned by the Wi-Fi Alliance. Any use of these marks on this website does not imply any affiliation with or endorsement.