



tedee GO2 Door Sensor Full Bundle Instruction Manual

June 4,
2025

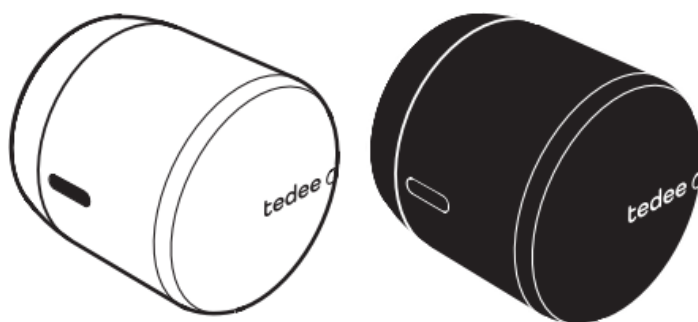
Contents [[hide](#)]

[1 tedee GO2](#)

[2 Documents / Resources](#)

[2.1 References](#)

tedee GO2



x1



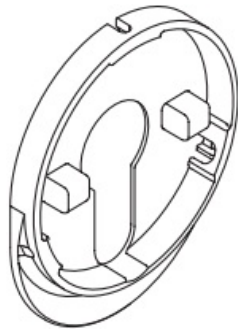
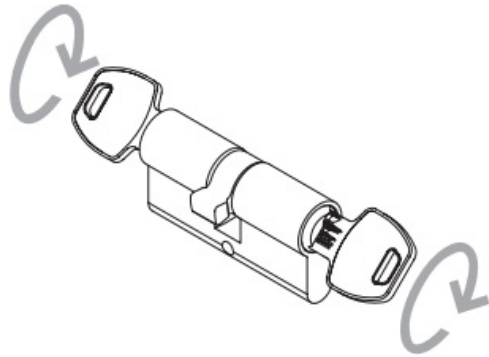
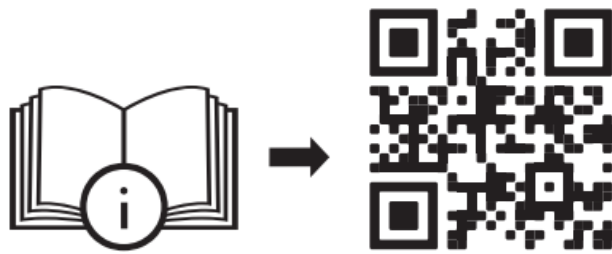
x3



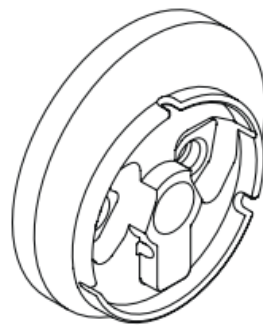
x1



x1



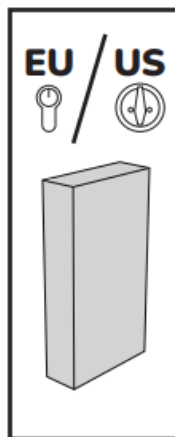
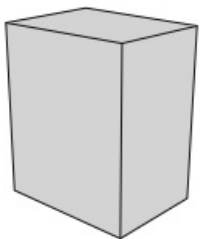
EU



US



tedee GO2

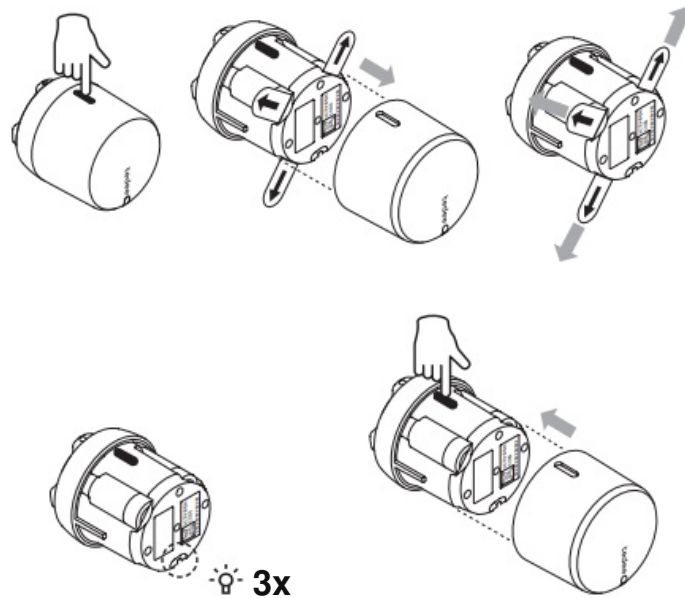




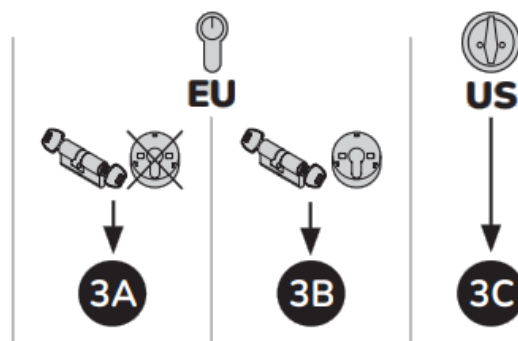
Tedee GO2 is compatible only with European cylinders equipped with an emergency function (double-clutch mechanism) and/or dedicated Tedee GO2 European and Deadbolt adapters, provided in a separate box.

If you are unable to tell if your cylinder is compatible, please contact us at support@tedee.com.

(1)

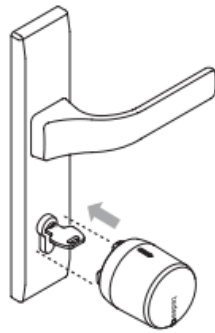
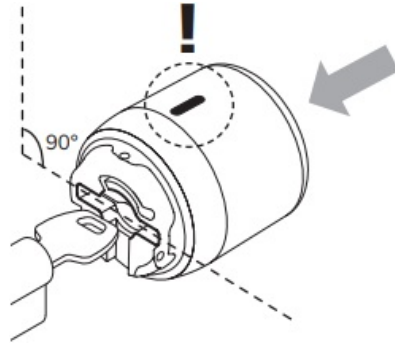


(2)

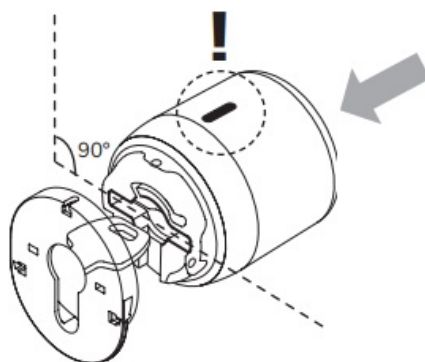


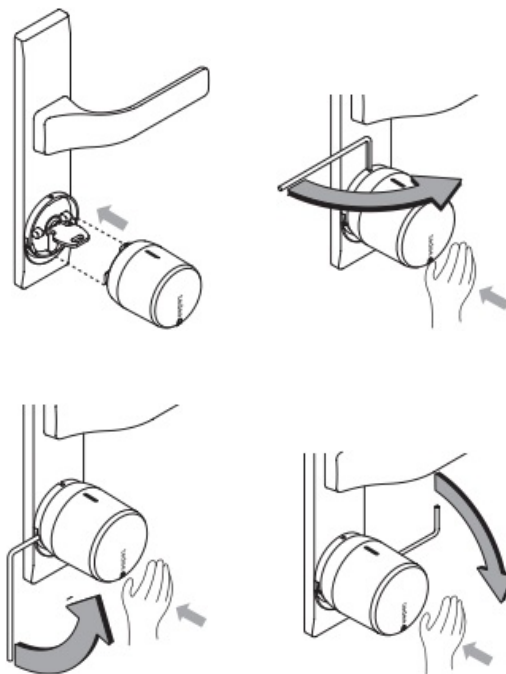


(3A)

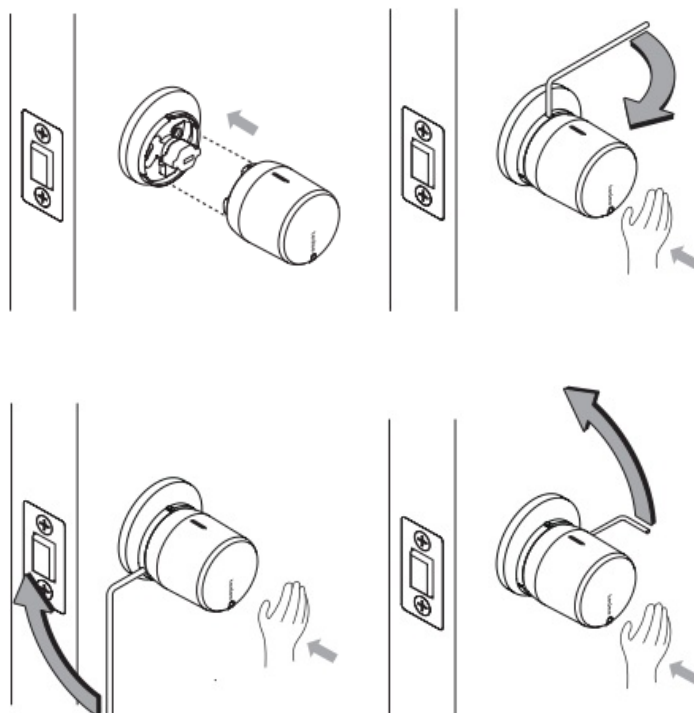
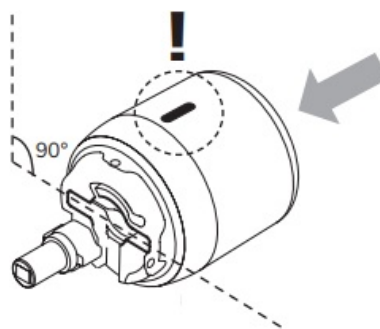


(3B)





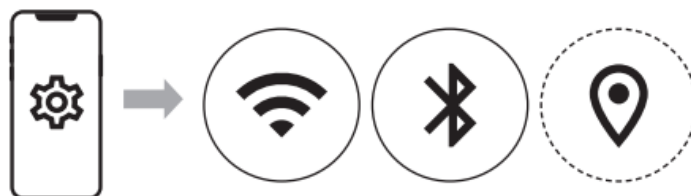
(3C)



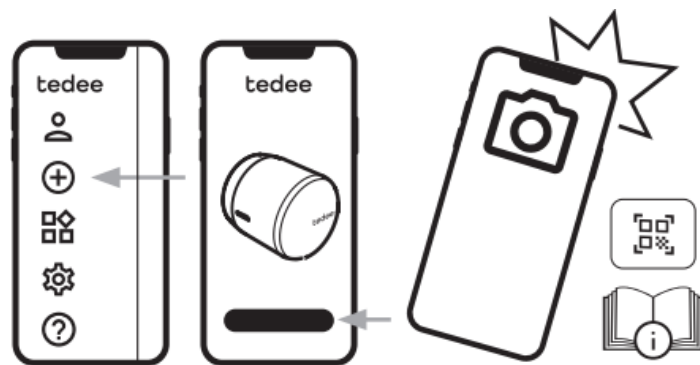
(3)



(4)



(5)



support@tedee.com



www.tedee.com/support



(+48) 22 307 72 67

8.00 – 16.00 (CET)



Tedee Sp. z o. o.

Karola Bohdanowicza 21/57

02-127 Warszawa

Poland

The Bluetooth® word mark and logos are registered trademarks owned by Bluetooth SIG, Inc. and any use of such marks by Tedee Sp. z o.o. is under license. Other trademarks and trade names are those of their respective owners.

Google, Android and Google Play are trademarks of Google LLC.

Apple and App Store are trademarks of Apple Inc. IOS is a trademark or registered

trademark of Cisco in the U.S. and other countries and is used under license.



Rev3

20250116-MiniManualTedeeGO2-Rev3.indd

16.01.2025 13:42

Documents / Resources

	tedee GO2 Door Sensor Full Bundle [pdf] Instruction Manual GO2 Door Sensor Full Bundle, GO2, Door Sensor Full Bundle, Sensor Full Bundle, Full Bundle
--	--

References

- [User Manual](#)

Door Sensor Full Bundle, Full Bundle, Go2, GO2 Door Sensor Full Bundle, Sensor Full Bundle,

tedee tedee

Leave a comment

Your email address will not be published. Required fields are marked *

Comment *

Name

Email

Website

☐ Save my name, email, and website in this browser for the next time I comment.

Post Comment

Search:

e.g. whirlpool wrf535swhz

Search

[Manuals+](#) | [Upload](#) | [Deep Search](#) | [Privacy Policy](#) | [@manuals.plus](#) | [YouTube](#)

This website is an independent publication and is neither affiliated with nor endorsed by any of the trademark owners. The "Bluetooth®" word mark and logos are registered trademarks owned by Bluetooth SIG, Inc. The "Wi-Fi®" word mark and logos are registered trademarks owned by the Wi-Fi Alliance. Any use of these marks on this website does not imply any affiliation with or endorsement.